

FXMQ**PAVJU Inverter Air Conditioner Ceiling-Mounted Duct Type

FXMQ07PAVJU

FXMQ12PAVJU

FXMQ15PAVJU

FXMQ24PAVJU

FXMQ30PAVJU

FXMQ54PAVJU

This manual is to be used by qualified technicians only.

© 2015 **DAIKIN NORTH AMERICA LLC** ◇ 5151 San Felipe St., Suite 500 ◇ Houston, TX 77056

Important Information

Index

Functional Parts List	3
Illustration and Parts	4 - 13

Views shown are for parts illustrations only, not servicing procedures

Text Codes:

AR - As Required

NA - Not Available

NS - Not Shown

00000000 - See Note

QTY - Quantity Example (QTY 3) (If Quantity not shown, Quantity = 1)

M - Model Example (M1) (If M Code not shown, then part is used on all Models)

Expanded Model Nomenclature:

Example M1 - Model#1 M2 - Model#2 M3 - Model#3

Daikin Company, L.P. is not responsible for personal injury or property damage resulting from improper service. Review all service information before beginning repairs.

Warranty service must be performed by an authorized technician, using authorized factory parts. If service is required after the warranty expires, Daikin Company, L.P. also recommends contacting an authorized technician and using authorized factory parts.

Daikin Company, L.P. reserves the right to discontinue, or change at any time, specifications or designs without notice or without incurring obligations.

For assistance within the U.S.A. contact:

Consumer Affairs Department

Daikin North America, LLC

7401 Security Way

Houston, Texas 77040

855-770-5678-Telephone

713-863-2382-Facsimile

For assistance outside the U.S.A. contact:

International Division

Daikin North America, LLC

7401 Security Way

Houston, Texas 77040

713-861-2500-Telephone

713-863-2382-Facsimile

Functional Parts

Part

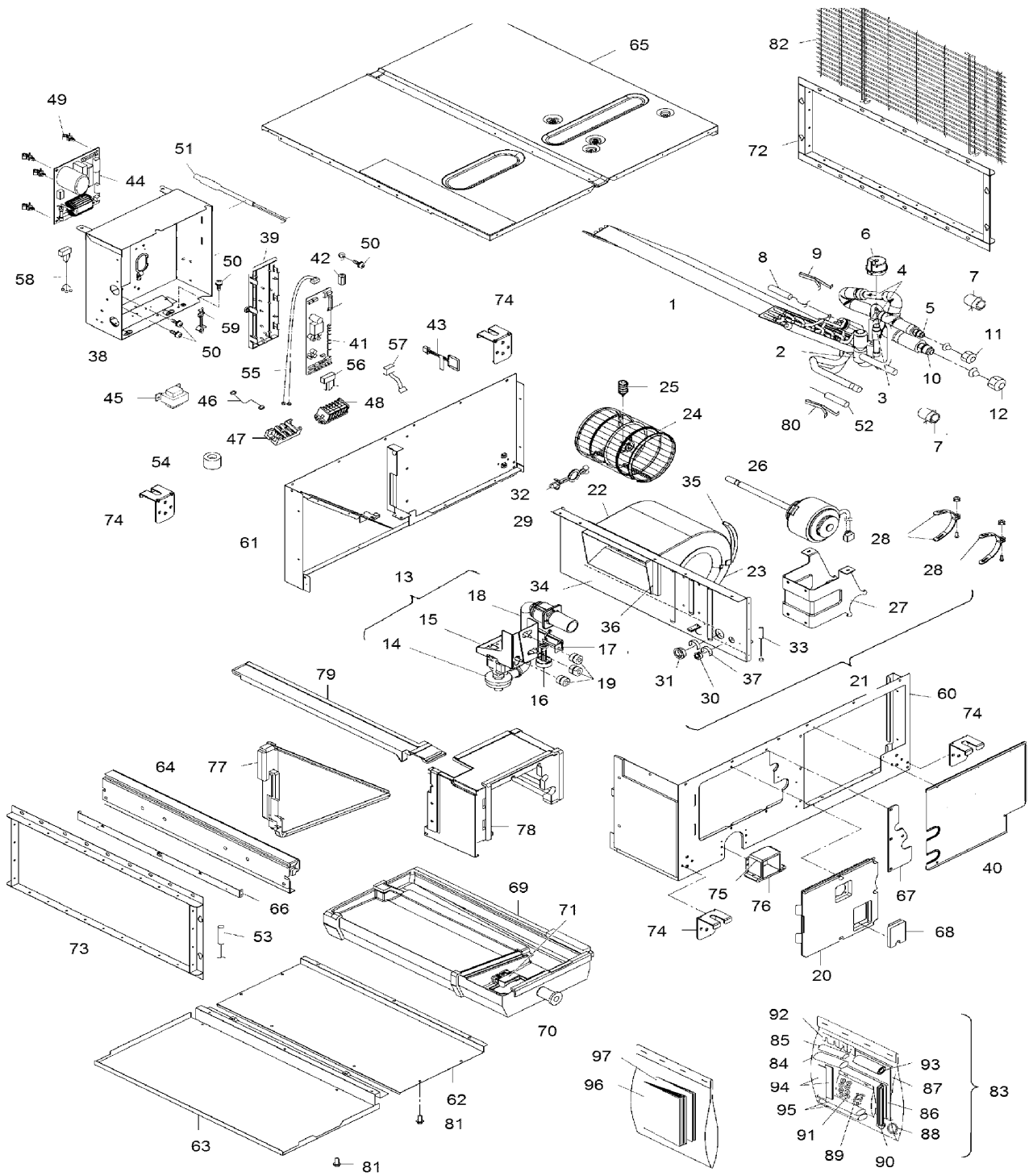
No: Description:

4006123	DC FAN MOTOR (M5)
1863590	DC FAN MOTOR (M2)
4011072	DC FAN MOTOR (M1)
4007849	DC FAN MOTOR (M6)
2008101	DC FAN MOTOR (M3, M4)
6018626	FLOAT SWITCH ASSY. (M1, M2, M5, M6)
1863862	PRINTED CIRCUIT ASSY. (CAPACITOR) (M3, M4, M5, M6)
4013116	PRINTED CIRCUIT ASSY. (CONTROL) (M1, M2, M3, M4, M5)
4013118	PRINTED CIRCUIT ASSY. (CONTROL) (M6)
4013117	PRINTED CIRCUIT ASSY. (FAN) (M2)
4006122	PRINTED CIRCUIT ASSY. (FAN) (M1)
2007595	PRINTED CIRCUIT ASSY. (INVERTER) (M3, M4)
1863778	THERMISTOR ASSY. (DISCHARGE AIR)
1985313	THERMISTOR ASSY. (GAS)
1863747	THERMISTOR ASSY. (LIQUID)
1863754	THERMISTOR ASSY. (SUCTION AIR)

Expanded Model Nomenclature

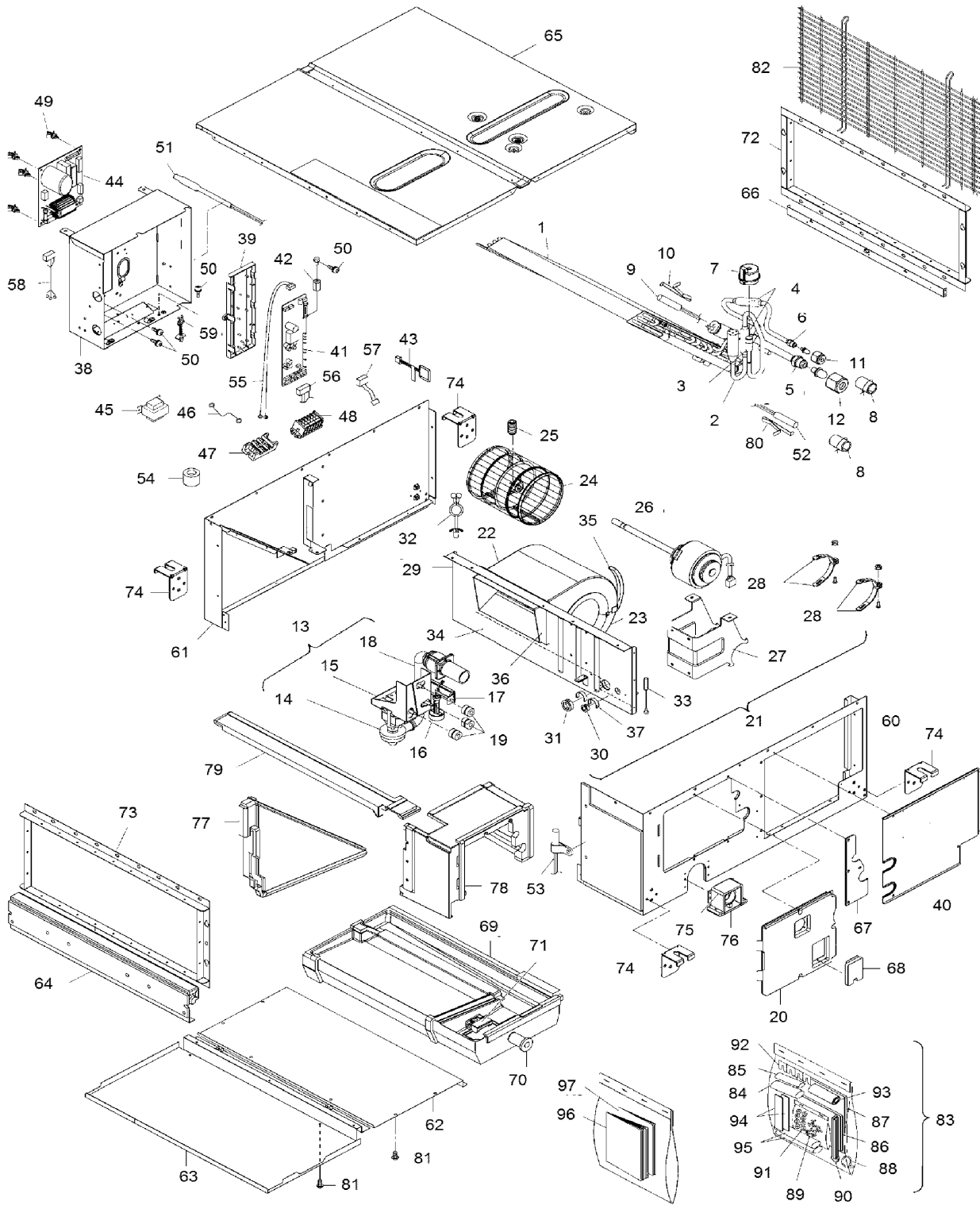
M1 - FXMQ07PAVJU
M2 - FXMQ12PAVJU
M3 - FXMQ15PAVJU
M4 - FXMQ24PAVJU
M5 - FXMQ30PAVJU
M6 - FXMQ54PAVJU

— TOP —



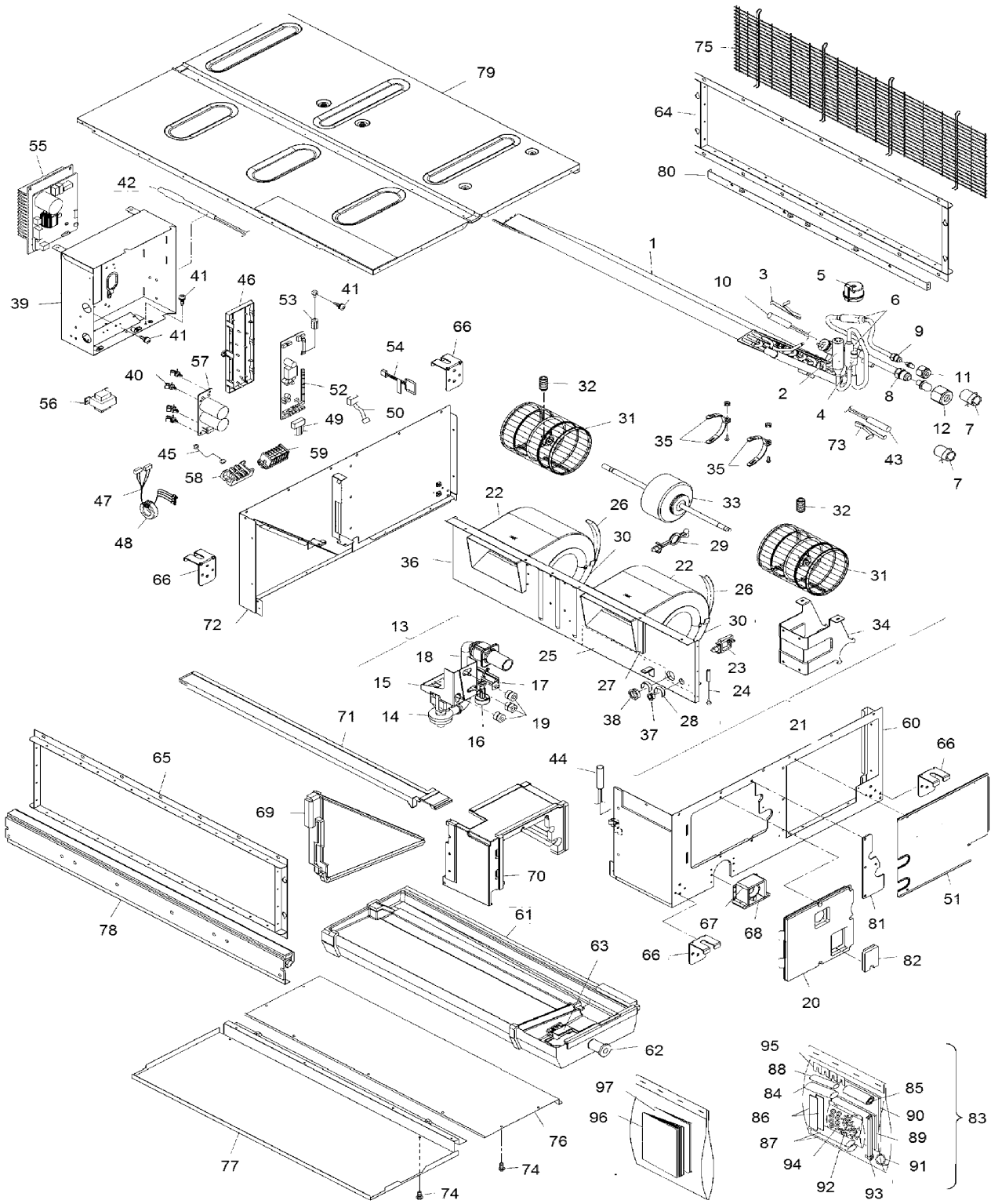
Ref. Part No: No:	Description:	Ref. Part No: No:	Description:							
Image 1:		Image 1:								
1	4001145	EVAPORATOR ASSY. (M1)	60	1877474	SIDE PLATE (RIGHT) (M1)					
2	NA	LIQUID PIPE ASSY. (M1)	61	1877481	SIDE PLATE (LEFT) (M1)					
3	141588J	BODY/ ELECTRONIC EXP. VALVE (M1)	62	4001152	REAR PLATE (M1)					
4	029913J	REFRIGERANT FILTER (M1)	63	4001153	BOTTOM PLATE ASSY. (M1)					
5	257576J	UNION JOINT (M1)	64	4001154	CENTER STAY ASSY. (M1)					
6	1863622	COIL/ ELECTRONIC EXP. VALVE (M1)	65	4001155	TOP PLATE ASSY. (M1)					
7	1830235	SEALING MATERIAL (M1)	66	4001156	BOTTOM FRAME (M1)					
8	1863747	THERMISTOR ASSY. (LIQUID) (M1)	67	1877544	SERVICE LID (1) ASSY. (M1)					
9	007432J	RETAINER/ THERMISTOR CLAMP (M1)	68	1877551	COVER/ INSPECTION HATCH (M1)					
10	257580J	UNION JOINT (M1)	69	4001157	DRAIN PAN ASSY. (M1)					
11	1723546	FLARE NUT (M1)	70	043068J	CAP/ DRAIN SOCKET (M1)					
12	119849J	FLARE NUT (M1)	71	1985421	ANTI-BACTERIAL AGENTS ASSY. (M1)					
13	NA	SERVICE LID (2) ASSY. (M1)	72	4001158	AIR INLET FLANGE (M1)					
14	6018625	DRAIN PUMP ASSY. (M1)	73	4001159	AIR OUTLET FLANGE (M1)					
15	1876154	DRAIN PUMP MOUNTING STAND (M1)	74	1877520	HOOK (M1)					
16	6018626	FLOAT SWITCH ASSY. (M1)	75	1877599	DRAIN SOCKET COVER (1) (M1)					
17	1877443	FLOAT SWITCH MOUNTING PLATE (M1)	76	1877607	DRAIN SOCKET COVER (2) (M1)					
18	1877450	DRAIN HOSE ASSY. (M1)	77	1881529	THERMAL INSULATION (PARTITION) (M1)					
19	1877436	RUBBER BUSH/ DRAIN PUMP (M1)	78	188153J	THERMAL INSULATION (RIGHT) (M1)					
20	1881459	SERVICE LID (2) (M1)	79	4001160	THERMAL INSULATION (TOP) (M1)					
21	6019155	SIROCCO FAN ASSY. (M1)	80	007432J	RETAINER/ THERMISTOR CLAMP (M1)					
22	1876084	FAN HOUSING (UPPER) (M1)	81	033078J	TAPPING SCREW (M1)					
23	1876091	FAN HOUSING (LOWER) (M1)	82	4001161	AIR INLET PROTECTION NET (M1)					
24	1863723	SIROCCO ROTOR ASSY. (M1)	83	NA	ACCESSORIES ASSY. (1) (M1)					
25	011582J	HEX. SOCKET SCREW (M1)	84	038187J	INSULATION TUBE/ LIQUID LINE (M1)					
26	4011072	DC FAN MOTOR (M1)	85	031111J	INSULATION TUBE/ GAS LINE (M1)					
27	1877335	MOTOR BASE (M1)	86	4000023	SEALING MATERIAL (M1)					
28	4007847	LOCK PLATE/ FAN MOTOR (M1)	87	032284J	SEALER/ DRAIN HOSE (M1)					
29	4001148	FAN TOP PLATE ASSY. (M1)	88	558103J	HOSE BAND (M1)					
30	170618J	BUSHING (HIGH VOLTAGE) (M1)	89	827097J	HEX. TAPPING SCREW (M1)					
31	144573J	GUARD BUSH (M1)	90	980723J	WIRE CLAMP (M1)					
32	101207J	CLAMP/ POWER CORD (M1)	91	094152J	PLAIN WASHER (FOR WOOD) (M1)					
33	1881442	EARTH WIRE (M1)	92	1755334	WASHER FIXING MATERIAL (M1)					
34	4001149	SEALING MATERIAL (M1)	93	007223J	DRAIN HOSE (M1)					
35	4000014	SEALING MATERIAL (M1)	94	187761J	SEALING MATERIAL (M1)					
36	4000015	SEALING MATERIAL (M1)	95	NA	ELECTRIC INSULATION (M1)					
37	4000016	SEALING MATERIAL (M1)	96	NA	OPERATION MANUAL (M1)					
38	1877359	SWITCH BOX (M1)	97	NA	INSTALLATION MANUAL (M1)					
39	1881466	RESIN CASE (M1)	Expanded Model Nomenclature							
40	1877568	COVER/ SWITCH BOX (M1)	<table border="1"> <tr> <td>M1 - FXMQ07PAVJU</td> </tr> <tr> <td>M2 - FXMQ12PAVJU</td> </tr> <tr> <td>M3 - FXMQ15PAVJU</td> </tr> <tr> <td>M4 - FXMQ24PAVJU</td> </tr> <tr> <td>M5 - FXMQ30PAVJU</td> </tr> <tr> <td>M6 - FXMQ54PAVJU</td> </tr> </table>		M1 - FXMQ07PAVJU	M2 - FXMQ12PAVJU	M3 - FXMQ15PAVJU	M4 - FXMQ24PAVJU	M5 - FXMQ30PAVJU	M6 - FXMQ54PAVJU
M1 - FXMQ07PAVJU										
M2 - FXMQ12PAVJU										
M3 - FXMQ15PAVJU										
M4 - FXMQ24PAVJU										
M5 - FXMQ30PAVJU										
M6 - FXMQ54PAVJU										
41	4013116	PRINTED CIRCUIT ASSY. (CONTROL) (M1)								
42	116718J	FERRITE CORE (M1)								
43	066963J	CAPACITY SETTING ADAPTOR (M1)								
44	4006122	PRINTED CIRCUIT ASSY. (FAN) (M1)								
45	1867167	REACTOR (M1)								
46	1881480	EARTH WIRE (M1)								
47	130774J	TERMINAL BLOCK (POWER SUPPLY) (M1)								
48	4001889	TERMINAL BLOCK (REMOTE CONTROLLER) (M1)								
49	380402J	LOCKING CARD SPACER (M1)								
50	113783J	TAPPING SCREW (M1)								
51	1863754	THERMISTOR ASSY. (SUCTION AIR) (M1)								
52	1985313	THERMISTOR ASSY. (GAS) (M1)								
53	1863778	THERMISTOR ASSY. (DISCHARGE AIR) (M1)								
54	1877412	FERRITE CORE (M1)								
55	1881505	WIRE HARNESS (POWER SUPPLY) (M1)								
56	1863677	WIRE HARNESS (REMOTE CONTROL) (M1)								
57	1863684	WIRE HARNESS (TRANSMISSION) (M1)								
58	1881512	WIRE HARNESS (POWER 2) (M1)								
59	1799961	WIRE CLIP (M1)								

— TOP —



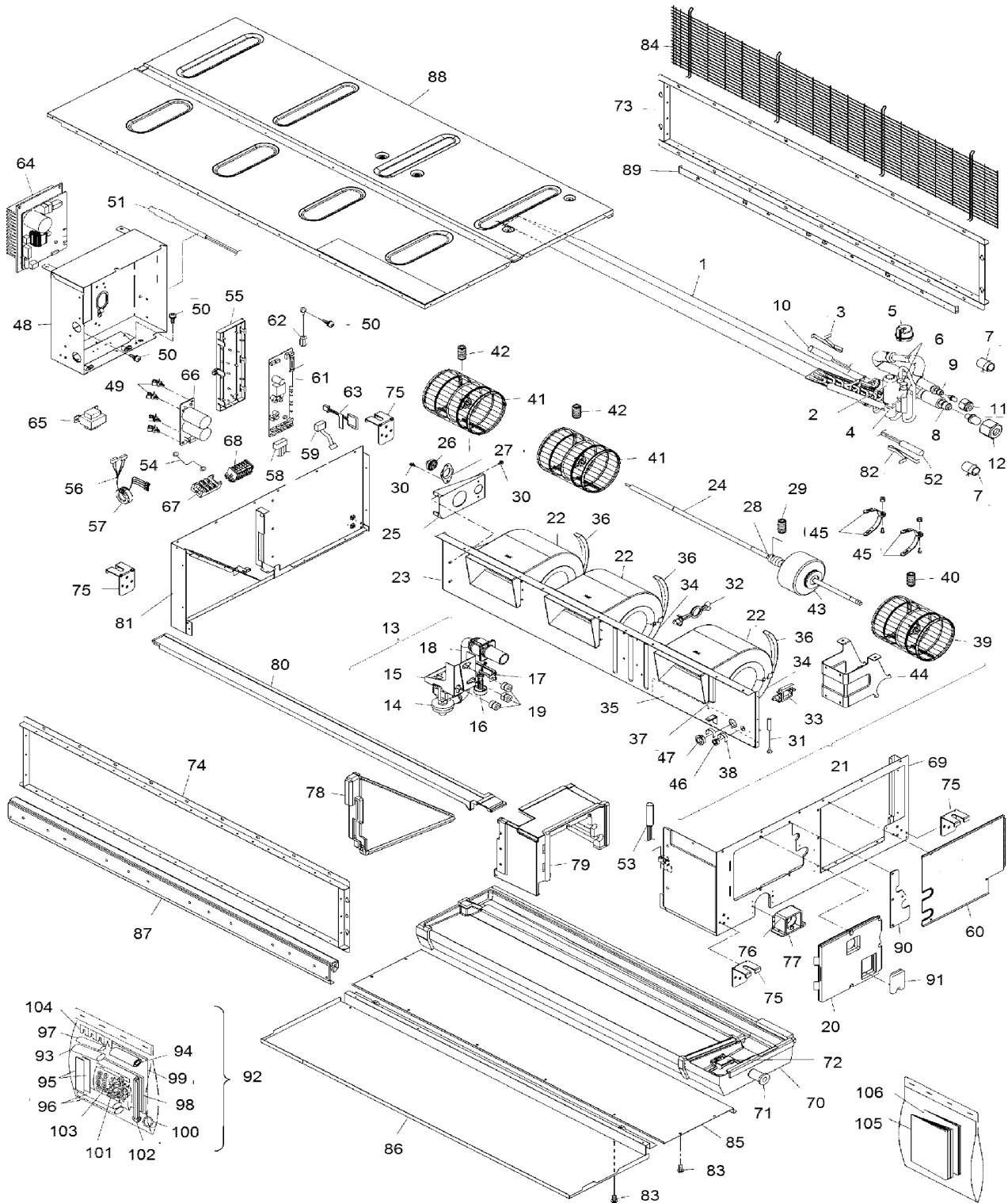
FXMQ15PAVJU / FXMQ18PAVJU / FXMQ24PAVJU

— TOP —



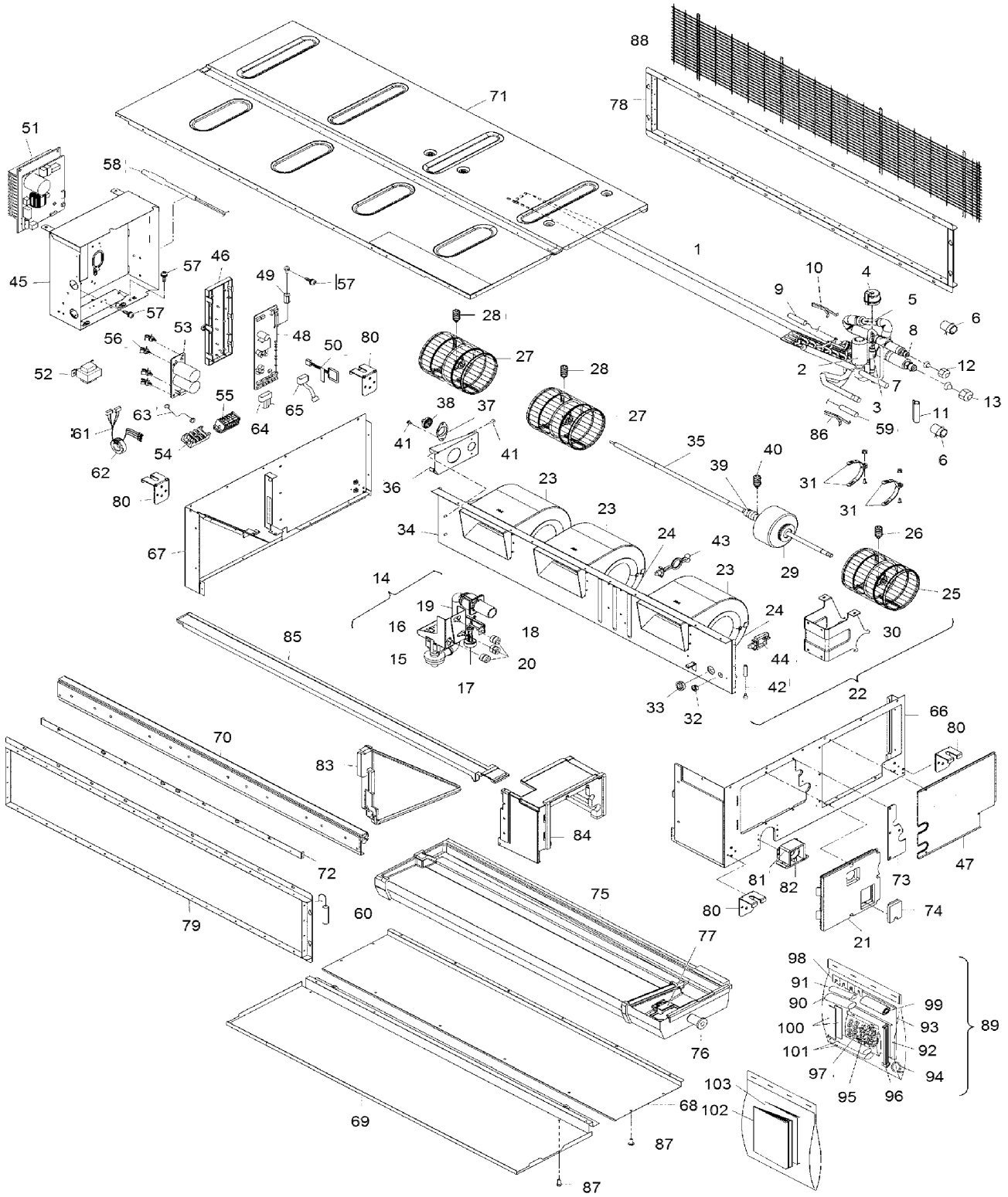
FXMQ30PAVJU / FXMQ36PAVJU / FXMQ48PAVJU

— TOP —



Ref. Part No: No:	Description:	Ref. Part No: No:	Description:							
Image 1:		Image 1:								
1	1863831	EVAPORATOR ASSY. (M5)	60	1877568	COVER/ SWITCH BOX (M5)					
2	1702936	DISTRIBUTOR (M5)	61	4013116	PRINTED CIRCUIT ASSY. (CONTROL) (M5)					
3	007432J	RETAINER/ THERMISTOR CLAMP (M5)	62	116718J	FERRITE CORE (M5)					
4	2116761	BODY/ ELECTRONIC EXP. VALVE (M5)	63	065337J	CAPACITY SETTING ADAPTOR					
5	1863622	COIL/ ELECTRONIC EXP. VALVE (M5)	63	065338J	CAPACITY SETTING ADAPTOR					
6	029913J	REFRIGERANT FILTER (M5)	63	066965J	CAPACITY SETTING ADAPTOR (M5)					
7	1830235	SEALING MATERIAL (M5)	64	2007588	INVERTER ASSY. (M5)					
8	257589J	UNION JOINT (M5)	65	5001278	REACTOR (M5)					
9	257577J	UNION JOINT (M5)	66	1863862	PRINTED CIRCUIT ASSY. (CAPACITOR) (M5)					
10	1863747	THERMISTOR ASSY. (LIQUID) (M5)	67	130774J	TERMINAL BLOCK (POWER SUPPLY) (M5)					
11	119848J	FLARE NUT (M5)	68	4001889	TERMINAL BLOCK (REMOTE CONTROLLER) (M5)					
12	119850J	FLARE NUT (M5)	69	1877474	SIDE PLATE (RIGHT) (M5)					
13	NA	SERVICE LID (2) ASSY. (M5)	70	1863653	DRAIN PAN ASSY. (M5)					
14	6018625	DRAIN PUMP ASSY. (M5)	71	043068J	CAP/ DRAIN SOCKET (M5)					
15	1876154	DRAIN PUMP MOUNTING STAND (M5)	72	1985421	ANTI-BACTERIAL AGENTS ASSY. (M5)					
16	6018626	FLOAT SWITCH ASSY. (M5)	73	1876356	AIR INLET FLANGE (M5)					
17	1877443	FLOAT SWITCH MOUNTING PLATE (M5)	74	1876363	AIR OUTLET FLANGE (M5)					
18	1877450	DRAIN HOSE ASSY. (M5)	75	1877520	HOOK (M5)					
19	1877436	RUBBER BUSH/ DRAIN PUMP (M5)	76	1877599	DRAIN SOCKET COVER (1) (M5)					
20	1881459	SERVICE LID (2) (M5)	77	1877607	DRAIN SOCKET COVER (2) (M5)					
21	1876248	SIROCCO FAN ASSY. (M5)	78	1881529	THERMAL INSULATION (PARTITION) (M5)					
22	1876084	FAN HOUSING (UPPER) (M5)	79	188153J	THERMAL INSULATION (RIGHT) (M5)					
23	1876255	FAN TOP PLATE ASSY. (M5)	80	1881822	THERMAL INSULATION (TOP) (M5)					
24	1876262	FAN SHAFT ASSY. (M5)	81	1877481	SIDE PLATE (LEFT) (M5)					
25	1876279	FAN BEARING PLATE (M5)	82	007432J	RETAINER/ THERMISTOR CLAMP (M5)					
26	437008J	FAN BEARING (M5)	83	033078J	TAPPING SCREW (M5)					
27	443026J	MOUNTING PLATE/ FAN BEARING (M5)	84	1881839	AIR INLET PROTECTION NET (M5)					
28	433021J	COUPLING/ FAN SHAFT (M5)	85	1876318	REAR PLATE (M5)					
29	6001169	SET SCREW (M5)	86	1876325	BOTTOM PLATE (M5)					
30	011425J	HEX. TAPPING SCREW (M5)	87	1876332	CENTRE STAY (M5)					
31	1881442	EARTH WIRE (M5)	88	1876743	TOP PLATE (M5)					
32	1096143	CLAMP/ POWER CORD (M5)	89	1876349	BOTTOM FRAME (M5)					
33	027843J	WIRE CLIP (M5)	90	1877544	SERVICE LID (1) ASSY. (M5)					
34	1876091	FAN HOUSING (LOWER) (M5)	91	1877551	COVER/ INSPECTION HATCH (M5)					
35	4000013	SEALING MATERIAL (M5)	92	NA	ACCESSORIES ASSY. (1) (M5)					
36	4000014	SEALING MATERIAL (M5)	93	038187J	INSULATION TUBE/ LIQUID LINE (M5)					
37	4000015	SEALING MATERIAL (M5)	94	007223J	DRAIN HOSE (M5)					
38	4000016	SEALING MATERIAL (M5)	95	187761J	SEALING MATERIAL (M5)					
39	1863723	SIROCCO ROTOR ASSY. (M5)	96	NA	ELECTRIC INSULATION (M5)					
40	011582J	HEX. SOCKET SCREW (M5)	97	031111J	INSULATION TUBE/ GAS LINE (M5)					
41	186373J	SIROCCO ROTOR ASSY. (M5)	98	4000023	SEALING MATERIAL (M5)					
42	011582J	HEX. SOCKET SCREW (M5)	99	032284J	SEALER/ DRAIN HOSE (M5)					
43	4006123	DC FAN MOTOR (M5)	100	558103J	HOSE BAND (M5)					
44	1876109	MOTOR BASE (M5)	101	827097J	HEX. TAPPING SCREW (M5)					
45	4007850	MOTOR FIXING PLATE (M5)	102	980723J	WIRE CLAMP (M5)					
46	170618J	BUSHING (HIGH VOLTAGE) (M5)	103	094152J	PLAIN WASHER (FOR WOOD) (M5)					
47	144573J	GUARD BUSH (M5)	104	1755334	WASHER FIXING MATERIAL (M5)					
48	1876116	SWITCH BOX ASSY. (M5)	105	NA	OPERATION MANUAL (M5)					
49	380402J	LOCKING CARD SPACER (M5)	106	NA	INSTALLATION MANUAL (M5)					
50	113783J	TAPPING SCREW (M5)	Expanded Model Nomenclature							
51	1863754	THERMISTOR ASSY. (SUCTION AIR) (M5)	<table border="1"> <tr> <td>M1 - FXMQ07PAVJU</td> </tr> <tr> <td>M2 - FXMQ12PAVJU</td> </tr> <tr> <td>M3 - FXMQ15PAVJU</td> </tr> <tr> <td>M4 - FXMQ24PAVJU</td> </tr> <tr> <td>M5 - FXMQ30PAVJU</td> </tr> <tr> <td>M6 - FXMQ54PAVJU</td> </tr> </table>		M1 - FXMQ07PAVJU	M2 - FXMQ12PAVJU	M3 - FXMQ15PAVJU	M4 - FXMQ24PAVJU	M5 - FXMQ30PAVJU	M6 - FXMQ54PAVJU
M1 - FXMQ07PAVJU										
M2 - FXMQ12PAVJU										
M3 - FXMQ15PAVJU										
M4 - FXMQ24PAVJU										
M5 - FXMQ30PAVJU										
M6 - FXMQ54PAVJU										
52	1985313	THERMISTOR ASSY. (GAS) (M5)								
53	1863778	THERMISTOR ASSY. (DISCHARGE AIR) (M5)								
54	1881480	EARTH WIRE (M5)								
55	1881466	RESIN CASE (M5)								
56	4009404	WIRE HARNESS ASSY. (M5)								
57	130283J	FERRITE CORE (M5)								
58	1863677	WIRE HARNESS (REMOTE CONTROL) (M5)								
59	1863684	WIRE HARNESS (TRANSMISSION) (M5)								

— TOP —



Ref. Part No: No:	Description:	Ref. Part No: No:	Description:							
Image 1:		Image 1:								
1	1936366	EVAPORATOR ASSY. (M6)	60	1863778	THERMISTOR ASSY. (DISCHARGE AIR) (M6)					
2	1702936	DISTRIBUTOR (M6)	61	NA	WIRE HARNESS ASSY. (M6)					
3	142418J	BODY/ ELECTRONIC EXP. VALVE (M6)	62	4007851	FERRITE CORE (M6)					
4	1863622	COIL/ ELECTRONIC EXP. VALVE (M6)	63	1881480	EARTH WIRE (M6)					
5	029913J	REFRIGERANT FILTER (M6)	64	1863677	WIRE HARNESS (REMOTE CONTROL) (M6)					
6	1830235	SEALING MATERIAL (M6)	65	1863684	WIRE HARNESS (TRANSMISSION) (M6)					
7	257589J	UNION JOINT (M6)	66	1936568	SIDE PLATE (RIGHT) (M6)					
8	257577J	UNION JOINT (M6)	67	1877481	SIDE PLATE (LEFT) (M6)					
9	1863747	THERMISTOR ASSY. (LIQUID) (M6)	68	1876318	REAR PLATE (M6)					
10	007432J	RETAINER/ THERMISTOR CLAMP (M6)	69	1876325	BOTTOM PLATE (M6)					
11	4009800	PUTTY (M6)	70	1876332	CENTRE STAY (M6)					
12	119848J	FLARE NUT (M6)	71	1876743	TOP PLATE (M6)					
13	119850J	FLARE NUT (M6)	72	1876349	BOTTOM FRAME (M6)					
14	NA	SERVICE LID (2) ASSY. (M6)	73	1877544	SERVICE LID (1) ASSY. (M6)					
15	6018625	DRAIN PUMP ASSY. (M6)	74	1877551	COVER/ INSPECTION HATCH (M6)					
16	1876154	DRAIN PUMP MOUNTING STAND (M6)	75	1863653	DRAIN PAN ASSY. (M6)					
17	6018626	FLOAT SWITCH ASSY. (M6)	76	043068J	CAP/ DRAIN SOCKET (M6)					
18	1877443	FLOAT SWITCH MOUNTING PLATE (M6)	77	1985421	ANTI-BACTERIAL AGENTS ASSY. (M6)					
19	1877450	DRAIN HOSE ASSY. (M6)	78	1876356	AIR INLET FLANGE (M6)					
20	1877436	RUBBER BUSH/ DRAIN PUMP (M6)	79	1876363	AIR OUTLET FLANGE (M6)					
21	1881459	SERVICE LID (2) (M6)	80	1877520	HOOK (M6)					
22	NA	SIROCCO FAN ASSY. (M6)	81	1877599	DRAIN SOCKET COVER (1) (M6)					
23	1876084	FAN HOUSING (UPPER) (M6)	82	1877607	DRAIN SOCKET COVER (2) (M6)					
24	1876091	FAN HOUSING (LOWER) (M6)	83	1881529	THERMAL INSULATION (PARTITION) (M6)					
25	1863723	SIROCCO ROTOR ASSY. (M6)	84	188153J	THERMAL INSULATION (RIGHT) (M6)					
26	011582J	HEX. SOCKET SCREW (M6)	85	1881822	THERMAL INSULATION (TOP) (M6)					
27	186373J	SIROCCO ROTOR ASSY. (M6)	86	007432J	RETAINER/ THERMISTOR CLAMP (M6)					
28	011582J	HEX. SOCKET SCREW (M6)	87	033078J	TAPPING SCREW (M6)					
29	4007849	DC FAN MOTOR (M6)	88	1881839	AIR INLET PROTECTION NET (M6)					
30	1876109	MOTOR BASE (M6)	89	NA	ACCESSORIES ASSY. (1) (M6)					
31	4007850	MOTOR FIXING PLATE (M6)	90	038187J	INSULATION TUBE/ LIQUID LINE (M6)					
32	170618J	BUSHING (HIGH VOLTAGE) (M6)	91	031111J	INSULATION TUBE/ GAS LINE (M6)					
33	144573J	GUARD BUSH (M6)	92	4000023	SEALING MATERIAL (M6)					
34	1876255	FAN TOP PLATE ASSY. (M6)	93	032284J	SEALER/ DRAIN HOSE					
35	1876262	FAN SHAFT ASSY. (M6)	94	558103J	HOSE BAND (M6)					
36	1876279	FAN BEARING PLATE (M6)	95	827097J	HEX. TAPPING SCREW (M6)					
37	437008J	FAN BEARING (M6)	96	980723J	WIRE CLAMP (M6)					
38	443026J	MOUNTING PLATE/ FAN BEARING (M6)	97	094152J	PLAIN WASHER (FOR WOOD) (M6)					
39	433021J	COUPLING/ FAN SHAFT (M6)	98	1755334	WASHER FIXING MATERIAL (M6)					
40	6001169	SET SCREW (M6)	99	007223J	DRAIN HOSE (M6)					
41	011425J	HEX. TAPPING SCREW (M6)	100	187761J	SEALING MATERIAL (M6)					
42	1881442	EARTH WIRE (M6)	101	NA	ELECTRIC INSULATION (M6)					
43	1096143	CLAMP/ POWER CORD (M6)	102	NA	OPERATION MANUAL (M6)					
44	027843J	WIRE CLIP (M6)	103	NA	INSTALLATION MANUAL (M6)					
45	1876116	SWITCH BOX ASSY. (M6)	Expanded Model Nomenclature							
46	1881466	RESIN CASE (M6)	<table border="1"> <tr> <td>M1 - FXMQ07PAVJU</td> </tr> <tr> <td>M2 - FXMQ12PAVJU</td> </tr> <tr> <td>M3 - FXMQ15PAVJU</td> </tr> <tr> <td>M4 - FXMQ24PAVJU</td> </tr> <tr> <td>M5 - FXMQ30PAVJU</td> </tr> <tr> <td>M6 - FXMQ54PAVJU</td> </tr> </table>		M1 - FXMQ07PAVJU	M2 - FXMQ12PAVJU	M3 - FXMQ15PAVJU	M4 - FXMQ24PAVJU	M5 - FXMQ30PAVJU	M6 - FXMQ54PAVJU
M1 - FXMQ07PAVJU										
M2 - FXMQ12PAVJU										
M3 - FXMQ15PAVJU										
M4 - FXMQ24PAVJU										
M5 - FXMQ30PAVJU										
M6 - FXMQ54PAVJU										
47	1877568	COVER/ SWITCH BOX (M6)								
48	4013118	PRINTED CIRCUIT ASSY. (CONTROL) (M6)								
49	116718J	FERRITE CORE (M6)								
50	065339J	CAPACITY SETTING ADAPTOR (M6)								
51	2007588	INVERTER ASSY. (M6)								
52	5001278	REACTOR (M6)								
53	1863862	PRINTED CIRCUIT ASSY. (CAPACITOR) (M6)								
54	130774J	TERMINAL BLOCK (POWER SUPPLY) (M6)								
55	4001889	TERMINAL BLOCK (REMOTE CONTROLLER) (M6)								
56	380402J	LOCKING CARD SPACER (M6)								
57	113783J	TAPPING SCREW (M6)								
58	1863754	THERMISTOR ASSY. (SUCTION AIR) (M6)								
59	1985313	THERMISTOR ASSY. (GAS) (M6)								