

Commercial 5 Ton Direct Drive Package Gas Unit

DSG0600901D1DDAA
DSG0600901DVXAAA
DSG0600901DVXBAA
DSG0600901DXXDAA
DSG0600901DXXXAA
DSG0600903DASBAA
DSG0600903DHSXAA
DSG0600903DHXBAA
DSG0600903DHXDAA
DSG0600903DHXXAA
DSG0600903DJXOAA
DSG0600903DWDAAA
DSG0600903DWXFAA
DSG0600903DXDXAA
DSG0600903DXSXAA
DSG0600903DXXCAA
DSG0600903DXXXAA
DSG0601401DADAAA
DSG0601401DAXLAA
DSG0601401DWXNAA
DSG0601401DXXXAA
DSG0601403DHDXAA
DSG0601403DHXBAA
DSG0601403DJXAAA
DSG0601403DVXDAA
DSG0601403DWDAAA
DSG0601403DXXBAA
DSG0601403DXXJAA
DSG0601403DXXXAA



This manual is to be used by qualified technicians only.

This manual replaces RP-D1124L.

Important Information

Index

Functional Parts List	3
Illustration and Parts	4 - 15

Views shown are for parts illustrations only, not servicing procedures

Text Codes:

AR - As Required

NA - Not Available

NS - Not Shown

00000000 - See Note

QTY - Quantity Example (QTY 3) (If Quantity not shown, Quantity = 1)

M - Model Example (M1) (If M Code not shown, then part is used on all Models)

Expanded Model Nomenclature:

Example M1 - Model#1 M2 - Model#2 M3 - Model#3

Daikin Company, L.P. is not responsible for personal injury or property damage resulting from improper service. Review all service information before beginning repairs.

Warranty service must be performed by an authorized technician, using authorized factory parts. If service is required after the warranty expires, Daikin Company, L.P. also recommends contacting an authorized technician and using authorized factory parts.

Daikin Company, L.P. reserves the right to discontinue, or change at any time, specifications or designs without notice or without incurring obligations.

For assistance within the U.S.A. contact:

Equipment Support
Daikin North America, LLC
19001 Kermier Road
Waller, Texas 77484
855-770-5678-Telephone
713-863-2382-Facsimile

For assistance outside the U.S.A. contact:

International Division
Daikin North America, LLC
19001 Kermier Road
Waller, Texas 77484
713-861-2500-Telephone
713-863-2382-Facsimile

Functional Parts

Part

No: Description:

20269903	AUXILIARY LIMIT, AUTO RESET
0163F00017	BECKETT BURNER (M1, M2, M3, M4, M5, M18, M19, M20, M21)
10735102	BECKETT BURNER (M6, M7, M8, M9, M10, M11, M12, M13, M14, M15, M16, M17, M22, M23, M24, M25, M26, M27, M28, M29)
B1368000	BLOWER WHEEL 11 X 10
CAP100700440CT	CAP, 10/70 MFD/ 440V/ DUAL RD (M1, M2, M3, M4, M5, M18, M19, M20, M21)
CAP100000370LA	CAPACITOR 10/370V (M6, M7, M8, M9, M10, M11, M12, M13, M14, M15, M16, M17, M22, M23, M24, M25, M26, M27, M28, M29)
ZP51K5EPFV130	COMPRESSOR 51000, 208/230/60/1 (M1, M2, M3, M4, M5, M18, M19, M20, M21)
ZP51K5ETF5130	COMPRESSOR 51000, 208/230/60/3 (M6, M7, M8, M9, M10, M11, M12, M13, M14, M15, M16, M17, M22, M23, M24, M25, M26, M27, M28, M29)
CONT3P030024V	CONTACTOR 30 AMP, 3P, 24V (M6, M7, M8, M9, M10, M11, M12, M13, M14, M15, M16, M17, M22, M23, M24, M25, M26, M27, M28, M29)
CONT2P040024V	CONTACTOR 40 AMP, 2P, 24V (M1, M2, M3, M4, M5, M18, M19, M20, M21)
0130M00074	CUT-OUT SWITCH, HIGH PRESSURE
0130M00087	CUT-OUT SWITCH, LOW PRESSURE
0150G00004	FAN BLADE
0130F00010	FLAME SENSOR (M1, M2, M3, M4, M5, M18, M19, M20, M21)
0151F00000P	GAS VALVE
0131M00121	ID COMBUSTION BLOWER (M1, M2, M3, M4, M5, M6, M7, M8, M9, M10, M11, M12, M13, M14, M15, M16, M17, M22, M23, M24, M25, M26, M27, M28, M29)
PCBAG123	IGNITION BOARD, DSI INTEGRATED
20261709	IGNITOR
0130F00105	LIMIT SWITCH (M1, M2, M3, M4, M5, M18, M19, M20, M21)
10123532	LIMIT-RESET MAN-GRAY
0131M00837	MOTOR, 1/4 HP, OD (M1, M2, M3, M4, M5, M6, M7, M8, M9, M10, M11, M12, M14, M15, M17, M18, M20, M21, M22, M23, M24, M25, M26, M27, M28, M29)
11112501	PRESSURE SWITCH (M1, M2, M3, M4, M5, M8, M9, M10, M11, M12, M13, M14, M16, M17, M18, M19, M20, M21, M22, M23, M24, M25, M26, M27, M28, M29)
0130M00063	PRIMARY LIMIT - GOLD 140° (M7, M8, M9, M10, M11, M12, M13, M14, M15, M16, M17)
0130F00035	PRIMARY LIMIT - PURPLE 220° (M6, M22, M23, M24, M25, M26, M27, M28, M29)
0130M00025	RELAY, SPDT
0130M00138	TRANSFORMER 208/230, 24V
0131L00002	VENT MOTOR (M18, M19, M20, M21)

Expanded Model Nomenclature

M1 - DSG0600901DVXAAA
M2 - DSG0600901DVXBAA
M3 - DSG0600901DXXDAA
M4 - DSG0600901DXXXAA
M5 - DSG0600901D1DDAA
M6 - DSG0600903DASBAA
M7 - DSG0600903DHSXAA
M8 - DSG0600903DHXBAA
M9 - DSG0600903DHXDAA
M10 - DSG0600903DHXAAA
M11 - DSG0600903DJXOAA
M12 - DSG0600903DWDAAA
M13 - DSG0600903DWFCAA
M14 - DSG0600903DXDXAA
M15 - DSG0600903DXSAAA
M16 - DSG0600903DXXCAA
M17 - DSG0600903DXXXAA
M18 - DSG0601401DADAAA
M19 - DSG0601401DAXLAA
M20 - DSG0601401DWXNAA
M21 - DSG0601401DXXXAA
M22 - DSG0601403DHDAAA
M23 - DSG0601403DHXBAA
M24 - DSG0601403DJXAAA
M25 - DSG0601403DVXAAA
M26 - DSG0601403DWDAAA
M27 - DSG0601403DXXBAA
M28 - DSG0601403DXXJAA
M29 - DSG0601403DXXXAA

Top Panel and Tubing Assembly

IMAGE 1

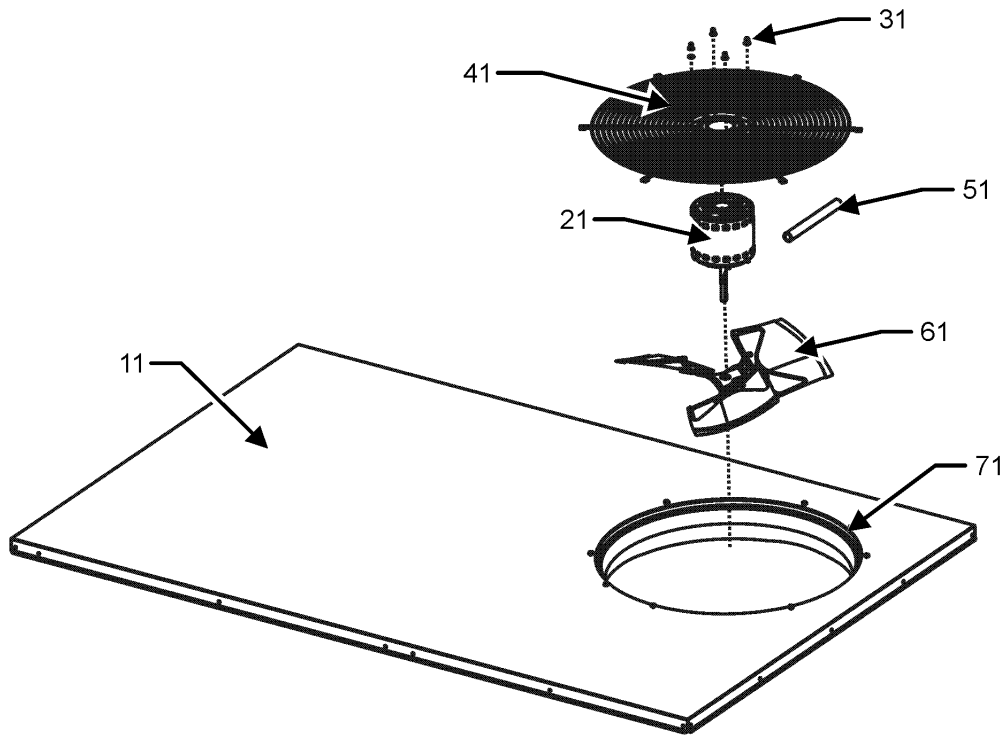
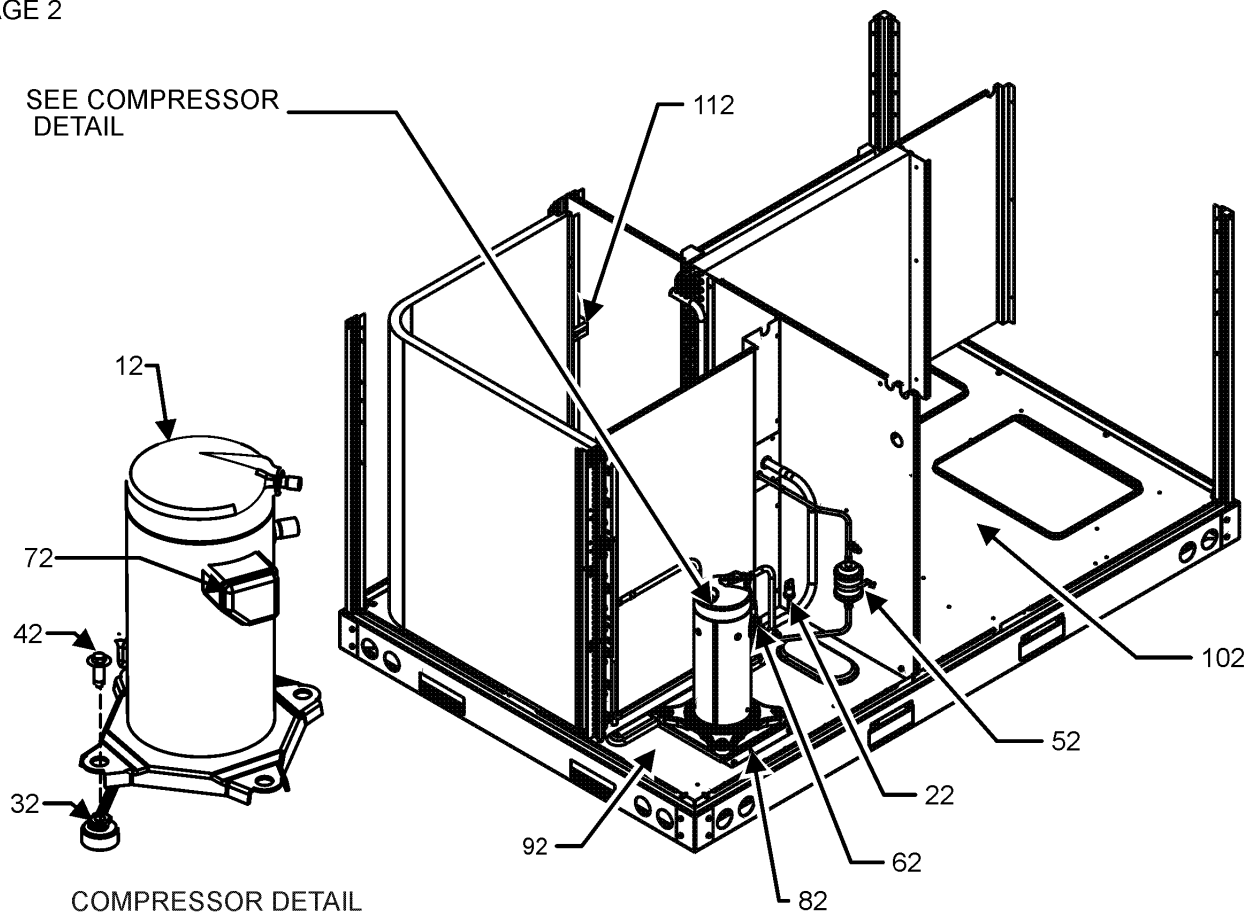


IMAGE 2



Top Panel and Tubing Assembly

Ref. Part No: No:	Description:	Ref. Part No: No:	Description:
Image 1:		Expanded Model Nomenclature	
11	0121L00235NG TOP PANEL	M1	- DSG0600901DVXAAA
21	0131L00061 MOTOR, 1/4 HP, 1SP, 6PL (M13, M16, M19)	M2	- DSG0600901DVXBAA
21	0131M00837 MOTOR, 1/4 HP, OD (M1, M2, M3, M4, M5, M6, M7, M8, M9, M10, M11, M12, M14, M15, M17, M18, M20, M21, M22, M23, M24, M25, M26, M27, M28, M29)	M3	- DSG0600901DXXDAA
31	0163M00006P ACORN NUT 5/16 HEX BLACK (QTY 4)	M4	- DSG0600901DXXXAA
41	0152G00000 FAN GRILLE, RAISED	M5	- DSG0600901D1DDAA
51	0161R00003P CONDUIT	M6	- DSG0600903DASBAA
61	0150G00004 FAN BLADE	M7	- DSG0600903DHSXAA
71	0161L00000 VENTURI RING 22"	M8	- DSG0600903DHXBAA
NS	0163M00004 SCREW #10X3/4", BLACK (QTY 3)	M9	- DSG0600903DHXDAA
NS	0163M00005P WASHER, BLACK (.50 OD .218ID) (QTY 4)	M10	- DSG0600903DHHXAA
Image 2:		M11	- DSG0600903DJXOAA
12	ZP51K5EPFV130 COMPRESSOR 51000, 208/230/60/1 (M1, M2, M3, M4, M5, M18, M19, M20, M21)	M12	- DSG0600903DWDAAA
12	ZP51K5ETF5130 COMPRESSOR 51000, 208/230/60/3 (M6, M7, M8, M9, M10, M11, M12, M13, M14, M15, M16, M17, M22, M23, M24, M25, M26, M27, M28, M29)	M13	- DSG0600903DWFCAA
22	0130M00087 CUT-OUT SWITCH, LOW PRESSURE	M14	- DSG0600903DXDXAA
32	B1339533 COMPRESSOR GROMMET (QTY 4)	M15	- DSG0600903DXSXAA
42	M0221641 TF SHOULDER SCREW (QTY 4)	M16	- DSG0600903DXXCAA
52	0162R00009 FILTER DRIER	M17	- DSG0600903DXXXAA
62	0130M00074 CUT-OUT SWITCH, HIGH PRESSURE	M18	- DSG0601401DADAAA
72	0159L00027 COMPRESSOR SCROLL HARNESS (M1, M2, M3, M4, M5, M18, M19, M20, M21)	M19	- DSG0601401DAXLAA
72	0159L00065 COMPRESSOR SCROLL HARNESS (M6, M7, M8, M9, M10, M11, M12, M13, M14, M15, M16, M17, M22, M23, M24, M25, M26, M27, M28, M29)	M20	- DSG0601401DWNAAA
82	0121L00310 COMPRESSOR MOUNTING PLATE	M21	- DSG0601401DXXXAA
92	0121L01990 BASE PAN, OUTDOOR	M22	- DSG0601403DHDAAA
102	0121L02619 BASE PAN, INDOOR	M23	- DSG0601403DHBAAA
112	0121L00936 BRACKET-HAIRPIN END	M24	- DSG0601403DJXAAA
NS	B1373315 ACCESS FITTING (QTY 2)	M25	- DSG0601403DVXAAA
		M26	- DSG0601403DWDAAA
		M27	- DSG0601403DXXBAA
		M28	- DSG0601403DXXJAA
		M29	- DSG0601403DXXXAA

Cabinet Assembly

IMAGE 1

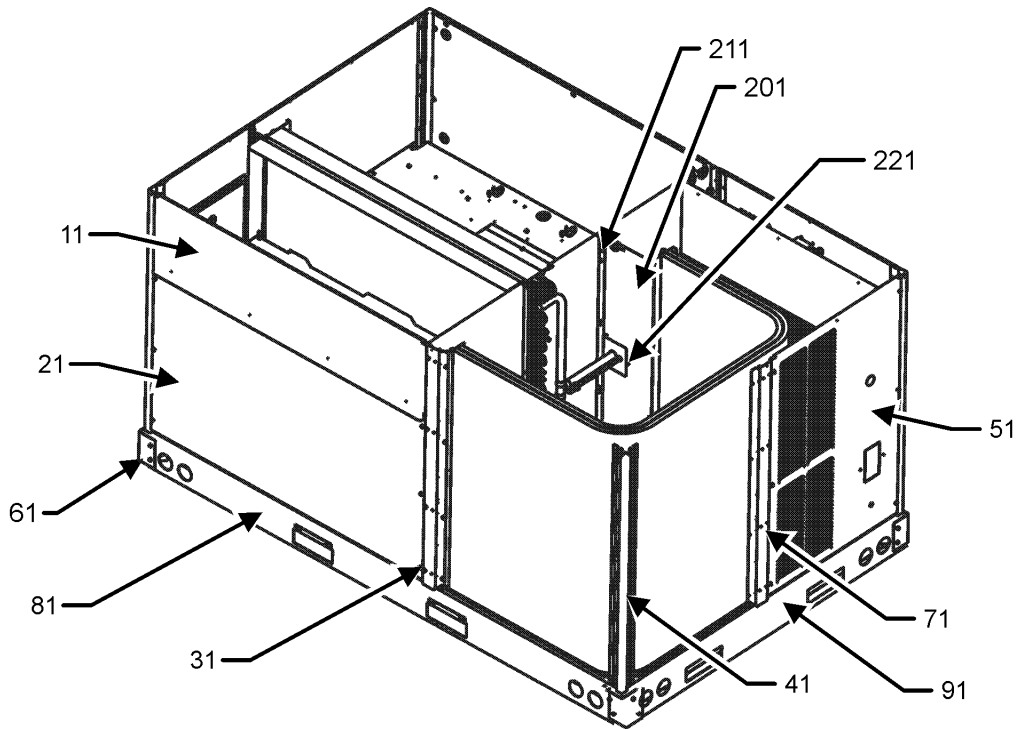
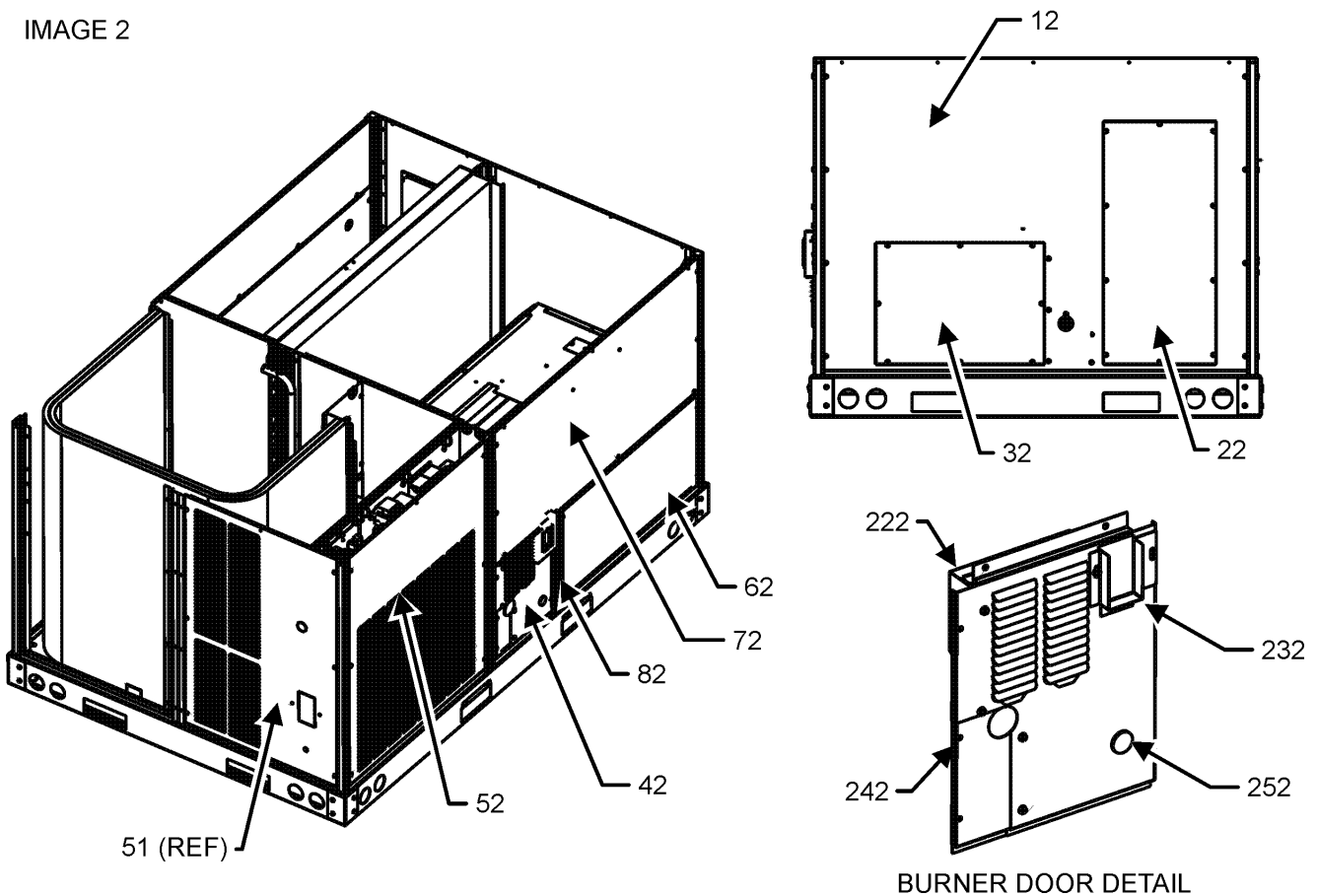


IMAGE 2



Cabinet Assembly

Ref. Part

No: No: Description:

Image 1:

11	0270L00362NG	FILTER DOOR
21	0121L00976NG	ECONOMIZER DOOR (M1, M2, M3, M4, M5, M7, M8, M9, M10, M12, M13, M14, M15, M16, M17, M20, M21, M22, M23, M25, M26, M27, M28, M29)
31	0121L00233RFNG	POST-SIDE SUPPORT (QTY 2)
41	0121L00237RFNG	CORNER POST (QTY 4)
41	0121L02553RFNG	PNT, CORNER POST (M5, M12, M14, M18, M22, M26)
51	0121L00263NG	LOUVERED COMPRESSOR PANEL (M1, M2, M3, M4, M6, M14, M15, M16, M17, M18, M19, M21, M25, M27, M28, M29)
51	0121L00836NG	PNT, COMP LOUVER DISC PNL (M5, M7, M8, M9, M10, M11, M12, M13, M20, M22, M23, M24, M26)
61	0121G00301	RAIL CORNER BRACKET (QTY 4)
71	0121L01374RFNG	PNT, RL FMD SIDE POST SUPPORT (M5, M12, M14, M18, M22, M26)
71	0121L01159RFNG	POST-SIDE SUPPORT (M1, M2, M3, M4, M6, M7, M8, M9, M10, M11, M13, M15, M16, M17, M19, M20, M21, M23, M24, M25, M27, M28, M29)
81	0121L00244RF	SIDE RAIL (QTY 2)
91	0121L00245	END RAIL
201	0121L00882	BLOCKOFF-CONDENSER
211	0121L00254	COND MOUNTING ANGLE
221	0121L00939	CONDENSER BLOCKOFF PLATE
NS	0121L01309	ECONOMIZER COVER (M6, M11, M18, M19, M24)
NS	0164L00009	GASKET-RUBBER, CPOST (QTY 3)
NS	0164L00011	GASKET-RUBBER, SIDE POST (QTY 3)

Image 2:

12	0121L00236NG	DUCT PANEL
22	0121L00023NG	RETURN DUCT COVER
32	0121L00024NG	SUPPLY DUCT COVER
42	0121L01438NG	BURNER DOOR
52	0121L01121NG	CONTROL PANEL W/LOUVERS (M1, M2, M3, M4, M6, M7, M8, M9, M10, M11, M13, M15, M16, M17, M19, M20, M21, M23, M24, M25, M27, M28, M29)
62	0121L01108NG	HEAT EXCHANGER DOOR
72	0121L01157NG	BLOWER DOOR
82	0121L01110RFNG	POST-BURNER
222	0121L01439	RAIN SHIELD DOOR
232	0121L01440NG	FLUE COLLAR
242	0121L01441NG	BURNER DOOR PANEL
252	B1392139	VIEW PORT BUSHING, CLEAR 1.00
NS	0141L00003X	FORK BOARD (QTY 2)
NS	0121L00055	FORK BOARD BRACKET (QTY 4)
NS	B1910010	GAS LINE GROMMET

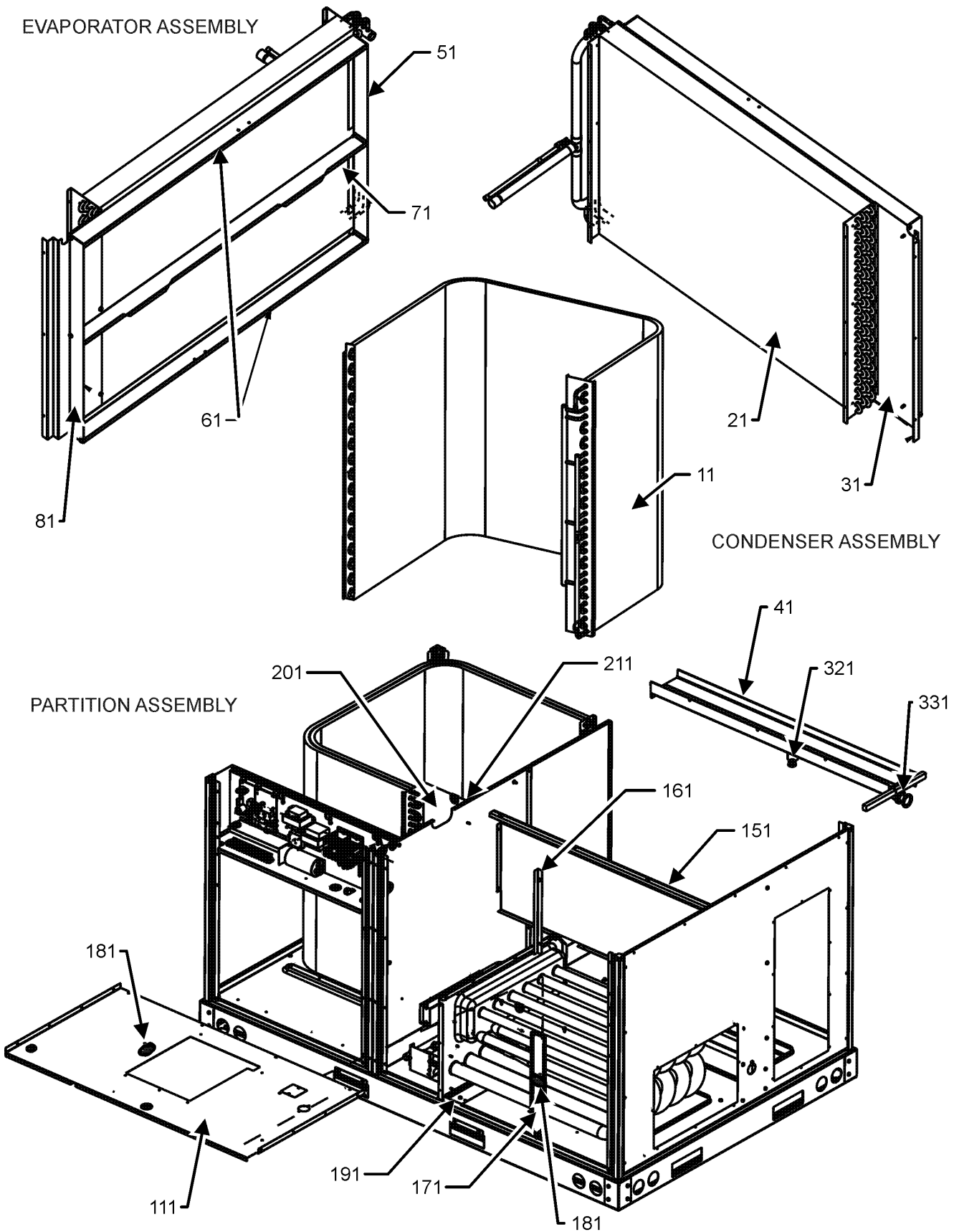
Ref. Part

No: No: Description:

Expanded Model Nomenclature

M1 - DSG0600901DVXAAA
M2 - DSG0600901DVXBAA
M3 - DSG0600901DXXDAA
M4 - DSG0600901DXXXAA
M5 - DSG0600901D1DDAA
M6 - DSG0600903DASBAA
M7 - DSG0600903DHSXAA
M8 - DSG0600903DHBXAA
M9 - DSG0600903DHDAAA
M10 - DSG0600903DHHXAA
M11 - DSG0600903DJXOAA
M12 - DSG0600903DWDAAA
M13 - DSG0600903DWWFAA
M14 - DSG0600903DXDXAA
M15 - DSG0600903DXSXAA
M16 - DSG0600903DXXCAA
M17 - DSG0600903DXXXAA
M18 - DSG0601401DADAAA
M19 - DSG0601401DAXLAA
M20 - DSG0601401DWNAAA
M21 - DSG0601401DXXXAA
M22 - DSG0601403DHDAAA
M23 - DSG0601403DHBAAA
M24 - DSG0601403DJXAAA
M25 - DSG0601403DVXDAAA
M26 - DSG0601403DWDAAA
M27 - DSG0601403DXXBAA
M28 - DSG0601403DXXJAA
M29 - DSG0601403DXXXAA

Condenser, Evaporator & Partition Panel



Condenser, Evaporator & Partition Panel

Ref. Part No:	Ref. Part No:	Description:	Description:
Image 1:		Expanded Model Nomenclature	
11	0201L00141	TUBING ASSY, COND COIL	M1 - DSG0600901DVXAAA
21	0202L00020	TUBING ASSY, EVAP COIL	M2 - DSG0600901DVXBAA
31	0121L00252	BLOCKOFF-EVAPORATOR (M1, M2, M4, M6, M7, M8, M10, M11, M12, M13, M14, M15, M16, M17, M18, M19, M21, M22, M23, M24, M26, M27, M28, M29)	M3 - DSG0600901DXXDAA
31	0121L00337	BLOCKOFF-EVAPORATOR (M3, M5, M9, M20, M25)	M4 - DSG0600901DXXXAA
41	0161L00005	DRAIN PAN	M5 - DSG0600901D1DDAA
51	0121L00287	FILTER ANGLE-VERTICAL (RETURN SIDE)	M6 - DSG0600903DASBAA
61	0121L00932	FILTER ANGLE-HORIZONTAL (QTY 2)	M7 - DSG0600903DHSXAA
71	0121L01255	ANGLE-FILTER CENTER	M8 - DSG0600903DHBAA
81	0121L00303	FILTER ANGLE-VERTICAL (HAIRPIN SIDE)	M9 - DSG0600903DHDAA
111	0121L03396	DECK-BLOWER	M10 - DSG0600903DHXAA
151	0121L02123	DECK SIDE CHANNEL	M11 - DSG0600903DJXAAA
161	0121L00293	BACK ANGLE-HEAT EXCHANGER (QTY 2)	M12 - DSG0600903DWDAAA
171	0121L00300	SUPPORT POST-DECK	M13 - DSG0600903DWFAAA
181	0130F00105	LIMIT SWITCH (M1, M2, M3, M4, M5, M18, M19, M20, M21)	M14 - DSG0600903DXDXAA
181	0130M00063	PRIMARY LIMIT - GOLD 140° (M7, M8, M9, M10, M11, M12, M13, M14, M15, M16, M17)	M15 - DSG0600903DXSAAA
181	0130F00035	PRIMARY LIMIT - PURPLE 220° (M6, M22, M23, M24, M25, M26, M27, M28, M29)	M16 - DSG0600903DXXCAA
191	0121L00266	HEAT PANEL CHANNEL (QTY 2)	M17 - DSG0600903DXXXAA
201	0121L00882	BLOCKOFF-CONDENSER	M18 - DSG0601401DADAAA
211	0121L00254	COND MOUNTING ANGLE	M19 - DSG0601401DAXLAA
321	0163L00071	DRAIN PLUG	M20 - DSG0601401DWNAAA
331	0154L00009	GASKET-DRAIN PAN	M21 - DSG0601401DXXXAA
NS	0160L00173	AIR FILTER 14 X 20 X 2 (QTY 4)	M22 - DSG0601403DHDAAA
NS	0121L01377	BLOWER DECK SUPPORT (M5, M12, M14, M18, M22, M26)	M23 - DSG0601403DHBAAA
NS	0121L00939	CONDENSER BLOCKOFF PLATE	M24 - DSG0601403DJXAAA
NS	0121L00238	DRAIN PAN SUPPORT	M25 - DSG0601403DVXAAA
NS	0121L00321	SMOKE DETECTOR COVER	M26 - DSG0601403DWDAAA
			M27 - DSG0601403DXXBAA
			M28 - DSG0601403DXXJAA
			M29 - DSG0601403DXXXAA

Blower and Control Box Assembly

IMAGE 1

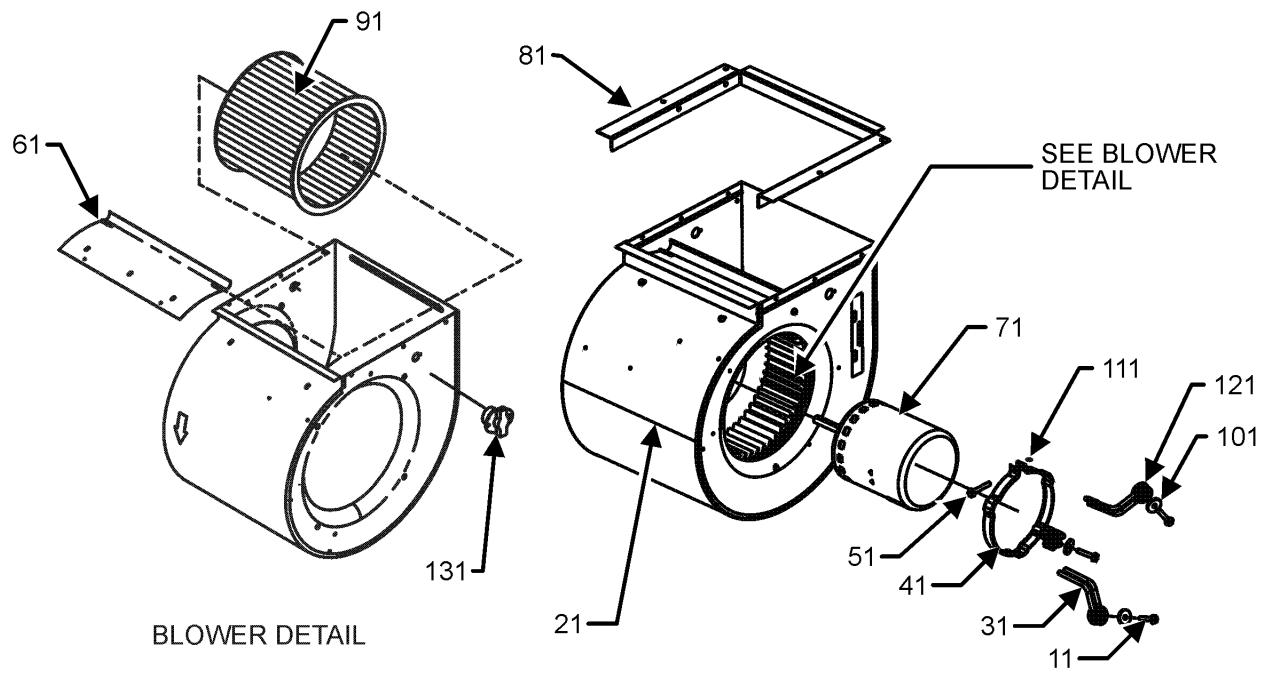
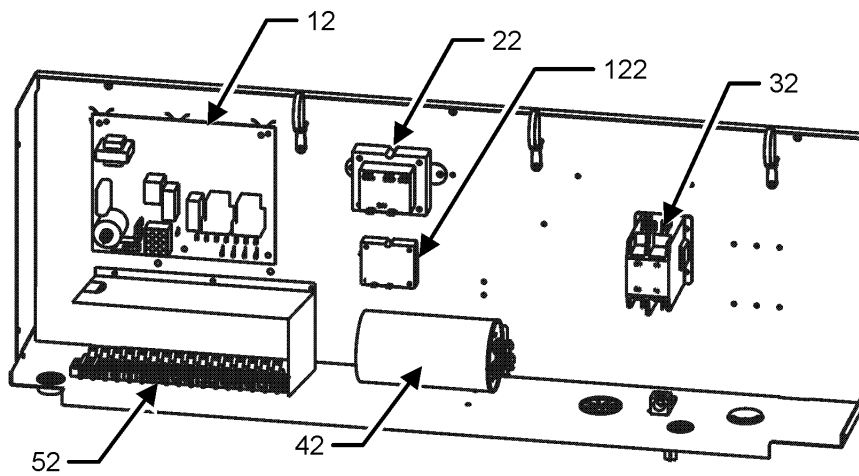


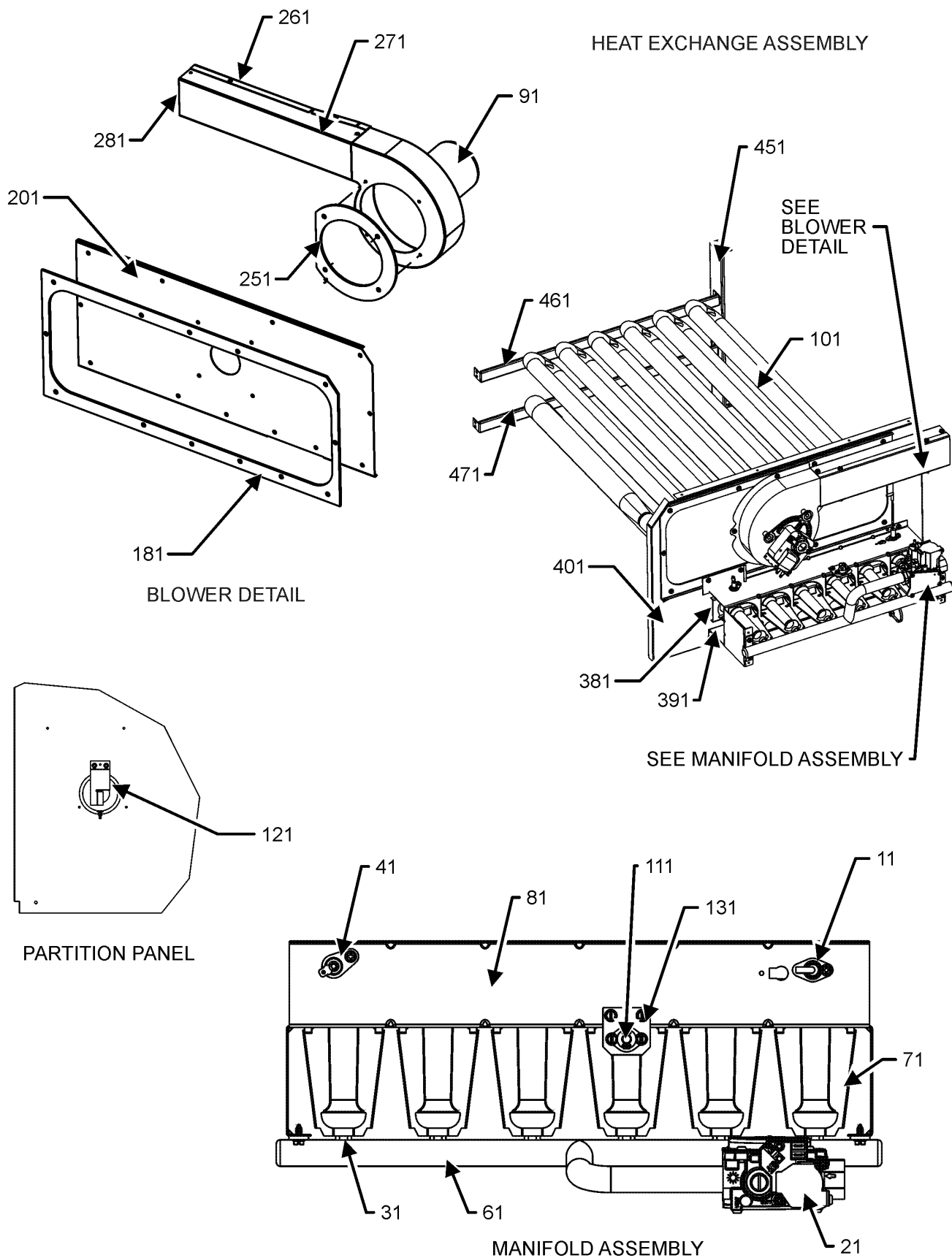
IMAGE 2



Blower and Control Box Assembly

Ref. Part No: No:	Description:	Ref. Part No: No:	Description:
Image 1:		Expanded Model Nomenclature	
11	M0221461 TC SCREW (QTY 4)	M1	- DSG0600901DVXAAA
21	11185811 HSG WELD-11X10 FUR	M2	- DSG0600901DVXBAA
31	10441501 MOTOR MOUNT ARM (QTY 4)	M3	- DSG0600901DXXDAA
41	10441601 MOTOR MOUNT BAND	M4	- DSG0600901DXXXAA
51	M0267144 MACHINE SCREW	M5	- DSG0600901D1DDAA
61	C6121807 BLOWER CUT-OFF	M6	- DSG0600903DASBAA
71	0131M00830 MOTOR, 1H.P. PROGRAMMED X-13	M7	- DSG0600903DHSXAA
81	0121L00281 BLOWER MOUNTING ANGLE	M8	- DSG0600903DHBAAA
91	B1368000 BLOWER WHEEL 11 X 10	M9	- DSG0600903DHDAAA
101	B1392918 WASHER, FLAT 1/4 ID X 1 OD (QTY 4)	M10	- DSG0600903DHHXAA
111	M0282015 KEPS NUT	M11	- DSG0600903DJXOAA
121	A4002702 BLOWER MOTOR GROMMET (QTY 4)	M12	- DSG0600903DWDAAA
131	20269903 AUXILIARY LIMIT, AUTO RESET	M13	- DSG0600903DWFAAA
Image 2:		M14	- DSG0600903DXDXAA
12	PCBAG123 IGNITION BOARD, DSI INTEGRATED	M15	- DSG0600903DXSXAA
22	0130M00138 TRANSFORMER 208/230, 24V	M16	- DSG0600903DXXCAA
32	CONT3P030024V CONTACTOR 30 AMP, 3P, 24V (M6, M7, M8, M9, M10, M11, M12, M13, M14, M15, M16, M17, M22, M23, M24, M25, M26, M27, M28, M29)	M17	- DSG0600903DXXXAA
32	CONT2P040024V CONTACTOR 40 AMP, 2P, 24V (M1, M2, M3, M4, M5, M18, M19, M20, M21)	M18	- DSG0601401DADAAA
42	CAP100700440CT CAP, 10/70 MFD/ 440V/ DUAL RD (M1, M2, M3, M4, M5, M18, M19, M20, M21)	M19	- DSG0601401DAXLAA
42	CAP100000370LA CAPACITOR 10/370V (M6, M7, M8, M9, M10, M11, M12, M13, M14, M15, M16, M17, M22, M23, M24, M25, M26, M27, M28, M29)	M20	- DSG0601401DWNAAA
52	0130M00038 TERMINAL BOARD	M21	- DSG0601401DXXXAA
122	0130M00025 RELAY, SPDT	M22	- DSG0601403DHDAAA
NS	20520901 CAPACITOR STRAP	M23	- DSG0601403DHBAAA
NS	0259L00179 ECONOMIZER WIRE HARNESS	M24	- DSG0601403DJXAAA
NS	0130M00127 MOTOR POWER HARNESS	M25	- DSG0601403DVXAAA
NS	0259L00054 WIRING HARNESS	M26	- DSG0601403DWDAAA
NS	0259L00066 WIRING HARNESS	M27	- DSG0601403DXXBAA
NS	0259L00069 WIRING HARNESS	M28	- DSG0601403DXXJAA
NS	0259L00125 WIRING HARNESS	M29	- DSG0601403DXXXAA
NS	0130M00126 X-13 LOW VOLTAGE WIRE HARNESS		

Heat Exchanger Assembly



Heat Exchanger Assembly

Ref. Part No:	Ref. Part No:	Description:	Description:
Image 1:		Image 1:	
11	20261709	IGNITOR	251 0154L00020
21	0151F00000P	GAS VALVE	GASKET-ID BLOWER (M1, M2, M3, M4, M5, M6, M7, M8, M9, M10, M11, M12, M13, M14, M15, M16, M17, M22, M23, M24, M25, M26, M27, M28, M29)
31	0163F00018	ORIFICE (M1, M2, M3, M4, M5, M18, M19, M20, M21)	261 0121L01355
41	0130F00010	FLAME SENSOR (M1, M2, M3, M4, M5, M18, M19, M20, M21)	261 0121L00277
61	0163L00026	MANIFOLD-GAS 4 BURNER (M1, M2, M3, M4, M5, M6, M7, M8, M9, M10, M11, M12, M13, M14, M15, M16, M17)	271 0121L01356
61	0163L00025	MANIFOLD-GAS, 6 BURNER (M18, M19, M20, M21)	271 0121L00278
71	0163F00017	BECKETT BURNER (M1, M2, M3, M4, M5, M18, M19, M20, M21)	281 0163L00072
71	10735102	BECKETT BURNER (M6, M7, M8, M9, M10, M11, M12, M13, M14, M15, M16, M17, M22, M23, M24, M25, M26, M27, M28, M29)	381 11072203
81	0121F00454	BRACKET-BURNER 4 (M1, M2, M3, M4, M5)	381 11072205
81	0121F00451	BRACKET-BURNER 6 (M18, M19, M20, M21)	391 0121L00267
81	20190412	BURNER BRACKET 4B (M7, M8, M9, M10, M11, M12, M13, M14, M15, M16, M17)	401 0121L00268
81	0121F00145	BURNER BRACKET 6B (M6, M22, M23, M24, M25, M26, M27, M28, M29)	451 0121L02618
91	0131M00121	ID COMBUSTION BLOWER (M1, M2, M3, M4, M5, M6, M7, M8, M9, M10, M11, M12, M13, M14, M15, M16, M17, M22, M23, M24, M25, M26, M27, M28, M29)	461 0121L01576
91	0131L00002	VENT MOTOR (M18, M19, M20, M21)	471 0121L02617
101	0270L00682	PART/TUBE ASSY (M1, M2, M3, M4, M5)	NS 0121L01440NG
101	0270L00684	PART/TUBE ASSY (M18, M19, M20, M21)	NS A3468601
101	0270L00092	PART/TUBE ASSY 4B (M8, M9, M10, M11, M12, M13, M14, M16, M17)	PNT, FLUE COLLAR [3-6Ton]
101	0270L00072	PART/TUBE ASSY 6B (M22, M23, M24, M25, M26, M27, M28, M29)	PRESSURE SWITCH HOSE
101	0270L00105	PART/TUBE ASSY, 4B (M6, M7, M15)	
111	10123532	LIMIT-RESET MAN-GRAY	
121	11112501	PRESSURE SWITCH (M1, M2, M3, M4, M5, M8, M9, M10, M11, M12, M13, M14, M16, M17, M18, M19, M20, M21, M22, M23, M24, M25, M26, M27, M28, M29)	
131	0121L00053	BRACKET-FLAME ROLLOUT	
181	0154L00018	ID BLOWER PLATE GASKET 4 BRNR (M1, M2, M3, M4, M5, M6, M7, M8, M9, M10, M11, M12, M13, M14, M15, M16, M17)	
181	0154L00017	ID BLOWER PLATE GASKET 6 BRNR (M18, M19, M20, M21, M22, M23, M24, M25, M26, M27, M28, M29)	
201	0121L00241	ID BLOWER PLATE (M22, M23, M24, M25, M26, M27, M28, M29)	
201	0121L00284	ID BLOWER PLATE 4 BRNR (M6, M7, M8, M9, M10, M11, M12, M13, M14, M15, M16, M17)	
201	0121L01353	PLATE, ID BLOWER 4 (M1, M2, M3, M4, M5)	
201	0121L01456	PLATE-ID BLOWER 6 (M18, M19, M20, M21)	
251	0154L00007	GASKET, BLOWER/ORIFICE PLATE (M18, M19, M20, M21)	

Heat Exchanger Assembly

Ref. Part

No: No:

Description:

Ref. Part

No: No:

Description:

Expanded Model Nomenclature

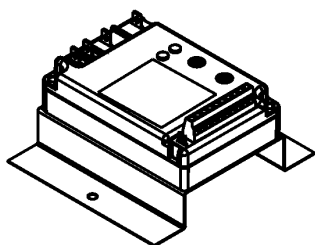
M1 - DSG0600901DVXAAA
M2 - DSG0600901DVXBAA
M3 - DSG0600901DXXDAA
M4 - DSG0600901DXXXAA
M5 - DSG0600901D1DDAA
M6 - DSG0600903DASBAA
M7 - DSG0600903DHSXAA
M8 - DSG0600903DHXBAA
M9 - DSG0600903DHXDAA
M10 - DSG0600903DHXXAA
M11 - DSG0600903DJXOAA
M12 - DSG0600903DWDAAA
M13 - DSG0600903DWXFAA
M14 - DSG0600903DXDXAA
M15 - DSG0600903DXSXAA
M16 - DSG0600903DXXCAA
M17 - DSG0600903DXXXAA
M18 - DSG0601401DADAAA
M19 - DSG0601401DAXLAA
M20 - DSG0601401DWXNAA
M21 - DSG0601401DXXXAA
M22 - DSG0601403DHDXAA
M23 - DSG0601403DHXBAA
M24 - DSG0601403DJXAAA
M25 - DSG0601403DVXDAA
M26 - DSG0601403DWDAAA
M27 - DSG0601403DXXBAA
M28 - DSG0601403DXXJAA
M29 - DSG0601403DXXXAA

Accessory Parts List

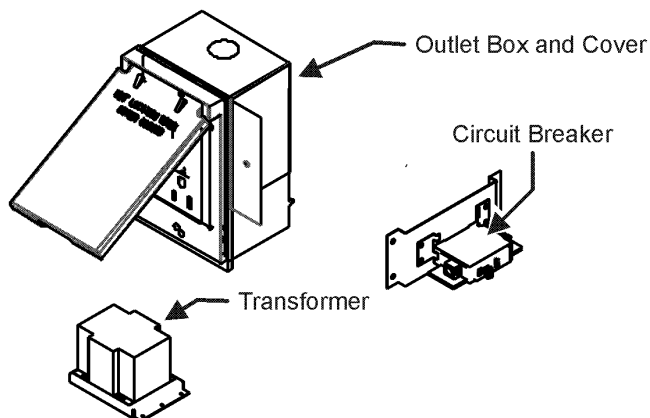
ACCESSORY PARTS LIST

NOTE: NOT ALL OPTIONS AVAILABLE FOR ALL PRODUCTS

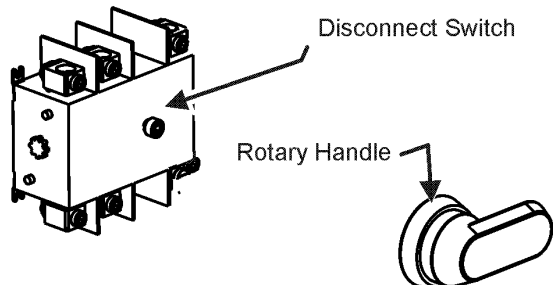
1 LOW AMBIENT KITS



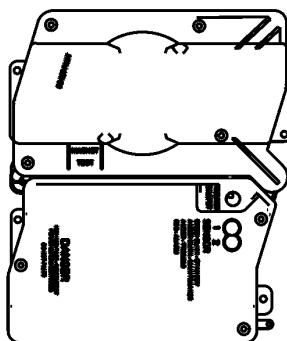
2 GFCI CONVENIENCE OUTLET



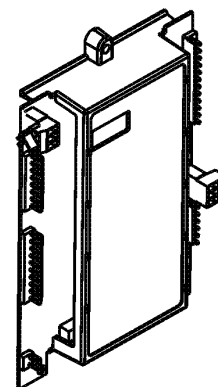
3 DISCONNECT MODULE (NON-FUSED)



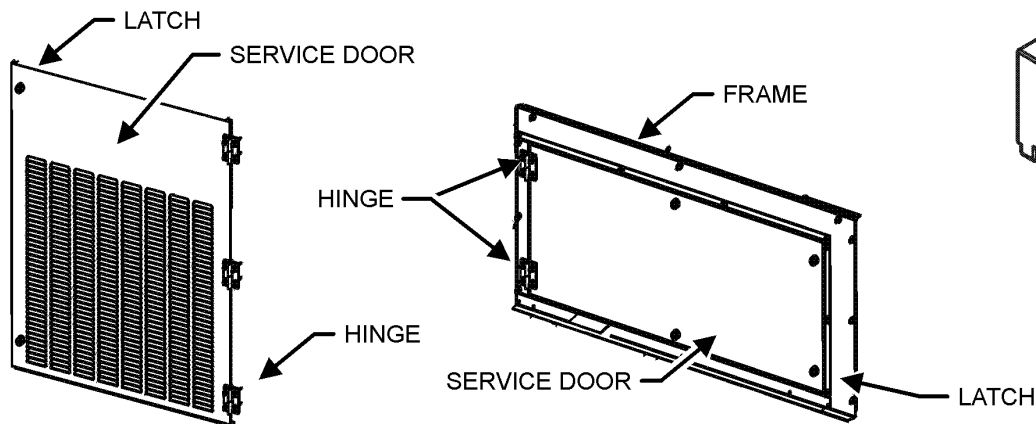
4 SMOKE DETECTORS



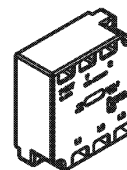
5 DDC CONTROL



6 HINGED DOOR ASSEMBLIES



7 PHASE MONITOR



Accessory Parts List

Ref. Part No: No:	Description:	Ref. Part No: No:	Description:
Image 1:		Expanded Model Nomenclature	
NS 1036609C	3-6 TON DFLOW ECONOMIZER (M6, M11, M18, M19, M24)	M1 - DSG0600901DVXAAA	
NS DDNECNJ3672C	3-6 TON DFLOW ECONOMIZER (M1, M2, M12, M13, M20, M25, M26)	M2 - DSG0600901DVXBAA	
NS 0121L01934	BRACKET SMOKE DETECTOR (M3, M5, M9, M11, M19, M20, M25, M28)	M3 - DSG0600901DXXDAA	
NS 0121L00316	BRACKET-CONV OUTLET MOUNT (M1, M2, M6, M8, M11, M12, M13, M18, M19, M20, M23, M24, M26, M27, M28)	M4 - DSG0600901DXXXAA	
NS 0121L00835	BRACKET-DISCONNECT SWITCH (M5, M7, M8, M9, M10, M11, M12, M13, M20, M22, M23, M24,	M5 - DSG0600901D1DDAA	
NS 0130M00065	CIRCUIT BREAKER, CONVENIENCE OUTLET (M2, M6, M8, M11, M20, M23, M27)	M6 - DSG0600903DASBAA	
NS 0121L00837NG	DISCONNECT COVER (M5, M7, M8, M9, M10, M11, M12, M13, M20, M22, M23, M24, M26)	M7 - DSG0600903DHSXAA	
NS 0130L00012	GANG BOX-GFCI OUTLET (M1, M2, M6, M8, M11, M12, M13, M18, M19, M20, M23, M24, M26, M27, M28)	M8 - DSG0600903DHBAAA	
NS 0130L00039	HANDLE, ROTARY (M5, M7, M8, M9, M10, M11, M12, M13, M20, M22, M23, M24, M26)	M9 - DSG0600903DHDAAA	
NS 0163M00307	HINGE, LEFT HAND (M5, M12, M14, M18, M22, M26)	M10 - DSG0600903DHXAAA	
NS 0163M00308	HINGE, RIGHT HAND (M5, M12, M14, M18, M22, M26)	M11 - DSG0600903DJXAAA	
NS 0163M00360	LATCH (M5, M12, M14, M18, M22, M26)	M12 - DSG0600903DWDAAA	
NS 0130M00058	LOW AMBIENT KIT (M13, M16, M19)	M13 - DSG0600903DWFAAA	
NS 0121L02509NG	PNT, BLOWER FRAME (M5, M12, M14, M18, M22, M26)	M14 - DSG0600903DXDXAA	
NS 0161G00012	POWER OUTLET BOX (M1, M2, M6, M8, M11, M12, M13, M18, M19, M20, M23, M24, M26, M27, M28)	M15 - DSG0600903DXSAAA	
NS 0130L00103	RECEPTACLE-GFCI OUTLET (M1, M2, M6, M8, M11, M12, M13, M18, M19, M20, M23, M24, M26, M27, M28)	M16 - DSG0600903DXXCAA	
NS RS400	REMOTE SENSOR (M5)	M17 - DSG0600903DXXXAA	
NS SP400	SENSOR PACK (M5)	M18 - DSG0601401DADAAA	
NS 0121L02527NG	SERVICE DOOR BACK, BLOWER (M5, M12, M14, M18, M22, M26)	M19 - DSG0601401DAXLAA	
NS 0121L02526NG	SERVICE DOOR FRONT, BLOWER (M5, M12, M14, M18, M22, M26)	M20 - DSG0601401DWNAAA	
NS 0130L00042	SHAFT, CUT (M5, M7, M8, M9, M10, M11, M12, M13, M22, M23, M24, M26)	M21 - DSG0601401DXXXAA	
NS 0130L00049	SHAFT, DISCONNECT (M20)	M22 - DSG0601403DHDAAA	
NS D4120	SMOKE DETECTOR, PHOTO 4WIRE (M3, M5, M9, M11, M19, M20, M25, M28)	M23 - DSG0601403DHBAAA	
NS D4S	SMOKE DETECTOR, SENSOR ONLY (M11, M19, M28)	M24 - DSG0601403DJXAAA	
NS ECP400-5	SURVEYOR ECP (M5)	M25 - DSG0601403DVXAAA	
NS 0130L00027	SWITCH-DISCONNECT 100A (M20)	M26 - DSG0601403DWDAAA	
NS 0130L00046	SWITCH-DISCONNECT 60A (M5, M7, M8, M9, M10, M11, M12, M13, M22, M23, M24, M26)	M27 - DSG0601403DXXBAA	
NS 0130M00061	TRANSFORMER, CONVENIENCE OUTLET (M2, M6, M8, M11, M20, M23, M27)	M28 - DSG0601403DXXJAA	
		M29 - DSG0601403DXXXAA	