

Commercial 3 Ton High Static Belt Drive Package Gas Unit

DSG0360453HVDCAA
DSG0360453HWDAAA
DSG0360453HWPAA
DSG0360703HRKBAA
DSG0360703HRKXAA
DSG0360703HWDAAA
DSG0360703HWJBAA
DSG0360704HHXXAA
DSG0360704HVXXAA
DSG0360704HWSBAA
DSG0360704HWXDAA
DSG0360704HWXNAA
DSG0360903HHXAAA
DSG0360903HWDAAA
DSG0360903HWXNAA
DSG0360903HWXVAA
DSG0360903HXSXAA
DSG0360903HXXAAA
DSG0360903HXXXAA
DSG0360904HHDCAA
DSG0360904HHDVAA
DSG0360904HHXAAA
DSG0360904HHXGAA
DSG0360904HXXZAA
DSG0360907HVXXAA
DSG0360907HXSXAA
DSG0360907HXXXAA



This manual is to be used by qualified technicians only.

This manual replaces RP-D1192H.

Important Information

Index

| | |
|------------------------------|--------|
| Functional Parts List | 3 |
| Illustration and Parts | 4 - 17 |

Views shown are for parts illustrations only, not servicing procedures

Text Codes:

AR - As Required

NA - Not Available

NS - Not Shown

00000000 - See Note

QTY - Quantity Example (QTY 3) (If Quantity not shown, Quantity = 1)

M - Model Example (M1) (If M Code not shown, then part is used on all Models)

Expanded Model Nomenclature:

| |
|---|
| Example M1 - Model#1 M2 - Model#2 M3 - Model#3 |
|---|

Daikin Company, L.P. is not responsible for personal injury or property damage resulting from improper service. Review all service information before beginning repairs.

Warranty service must be performed by an authorized technician, using authorized factory parts. If service is required after the warranty expires, Daikin Company, L.P. also recommends contacting an authorized technician and using authorized factory parts.

Daikin Company, L.P. reserves the right to discontinue, or change at any time, specifications or designs without notice or without incurring obligations.

For assistance within the U.S.A. contact:

Equipment Support
Daikin North America, LLC
19001 Kermier Road
Waller, Texas 77484
855-770-5678-Telephone
713-863-2382-Facsimile

For assistance outside the U.S.A. contact:

International Division
Daikin North America, LLC
19001 Kermier Road
Waller, Texas 77484
713-861-2500-Telephone
713-863-2382-Facsimile

Functional Parts

Part

No: Description:

| Part No: | Description: | Part No: | Description: |
|----------------|--|------------------------------------|--|
| B1370155 | AUXILIARY LIMIT SWITCH 1200 (M13, M14, M15, M16, M17, M18, M19, M20, M21, M22, M23, M24, M25, M26, M27) | 0130M00138 | TRANSFORMER 208/230, 24V (M1, M2, M3, M4, M5, M6, M7, M13, M14, M15, M16, M17, M18, M19) |
| 10735102 | BECKETT BURNER (QTY 2) | 0130M00595 | TRANSFORMER, 75VA, 480V TO 24V (M8, M9, M10, M11, M12, M20, M21, M22, M23, M24) |
| B1368056 | BELT DRIVE BLOWER WHEEL | 0130M00598 | TRANSFORMER, 75VA, 575V TO 24V (M25, M26, M27) |
| 0131L00003 | BELT DRIVE MOTOR 1 HP (M1, M2, M3, M4, M5, M6, M7, M8, M9, M10, M11, M12, M13, M14, M15, M16, M17, M18, M19, M20, M21, M22, M23, M24) | 0151M00013 | VALVE, GAS (HW) SINGLE STAGE (M1, M2, M3) |
| CAP075000440LA | CAP 7.5 MFD/440V/OVAL (M8, M9, M10, M11, M12, M20, M21, M22, M23, M24) | Expanded Model Nomenclature | |
| CAP030000440LA | CAPACITOR (M25, M26, M27) | M1 - DSG0360453HVDCAA | |
| CAP050000370LA | CAPACITOR 5/370V (M4, M5, M20, M21) | M2 - DSG0360453HWDAAA | |
| CAP050000440LA | CAPACITOR 5/440V (M1, M2, M3, M4, M5, M6, M7, M13, M14, M15, M16, M17, M18, M19) | M3 - DSG0360453HWXPAA | |
| ZP31K5ETFE130 | COMP, 31100,575/60/3 (M25, M26, M27) | M4 - DSG0360703HRKBAA | |
| ZP31K5ETF5130 | COMP, 31200,200/230/60/3 (M1, M2, M3, M4, M5, M6, M7, M13, M14, M15, M16, M17, M18, M19) | M5 - DSG0360703HRKXAA | |
| ZP31K5ETFD130 | COMP,31200,460/60/3 (M8, M9, M10, M11, M12, M20, M21, M22, M23, M24) | M6 - DSG0360703HWDAAA | |
| 0131M00431 | COND MOTOR 575V (M25, M26, M27) | M7 - DSG0360703HWJBAA | |
| CONT3P025024V | CONTACTOR 25 AMP, 3P, 24V (M8, M9, M10, M11, M12, M20, M21, M22, M23, M24, M25, M26, M27) | M8 - DSG0360704HHXXAA | |
| CONT3P030024V | CONTACTOR 30 AMP, 3P, 24V (M1, M2, M3, M4, M5, M6, M7, M13, M14, M15, M16, M17, M18, M19) | M9 - DSG0360704HVXXAA | |
| 0130M00209 | CUT-OUT SWITCH, HIGH PRESSURE | M10 - DSG0360704HWSBAA | |
| 0130L00007 | CUT-OUT SWITCH, LOW PRESSURE | M11 - DSG0360704HXXDAA | |
| 0150G00004 | FAN BLADE | M12 - DSG0360704HXXNAA | |
| 0130F00010 | FLAME SENSOR | M13 - DSG0360903HHXAAA | |
| 0151F00000P | GAS VALVE - WHITE-RODGERS 2-STAGE (M4, M5, M6, M7, M8, M9, M10, M11, M12, M13, M14, M15, M16, M17, M18, M19, M20, M21, M22, M23, M24, M25, M26, M27) | M14 - DSG0360903HWDAAA | |
| 20261709 | IGNITOR | M15 - DSG0360903HXXNAA | |
| 0130F00038 | LIMIT, PRIMARY, 120, LT BLUE (M1, M2, M3) | M16 - DSG0360903HXXVAA | |
| 10123532 | MANUAL RESET LIMIT 350°F | M17 - DSG0360903HXSXAA | |
| 0131M00847 | MOTOR, 1/4 HP, 1 SP, 6 PL (M2, M3, M4, M5, M6, M7, M13, M14, M15, M17, M18, M19) | M18 - DSG0360903HXXAAA | |
| 0131M00857 | MOTOR, 380/460 50/60 HZ (M8, M9, M10, M11, M12, M22, M23, M24) | M19 - DSG0360903HXXAAA | |
| 0131L00061 | Motor, Cond, 1/4 HP, 208/230V (M1, M16) | M20 - DSG0360904HHDCAA | |
| 0131L00062 | MOTOR, COND, 1/4 HP, 460V (M20, M21) | M21 - DSG0360904HHDVAA | |
| 0131L00004 | MOTOR-1.5 HP BELT DRIVE 575 (M25, M26, M27) | M22 - DSG0360904HHXAAA | |
| 0164L00002 | NOTCHED FAN BELT | M23 - DSG0360904HHXGAA | |
| PCBAG123 | PCB, IGNITION, DSI | M24 - DSG0360904HXXZAA | |
| 11112501 | PRESSURE SWITCH | M25 - DSG0360907HVXXAA | |
| 0130M00063 | PRIMARY LIMIT - GOLD 140° (M1, M2, M3, M4, M5, M6, M7, M8, M9, M10, M11, M12) | M26 - DSG0360907HXSXAA | |
| 0130F00037 | PRIMARY LIMIT - GRAY 150° (M4, M5, M6, M7, M8, M9, M10, M11, M12) | M27 - DSG0360907HXXAAA | |
| 20162905 | PRIMARY LIMIT-YELLOW (M13, M14, M15, M16, M17, M18, M19, M20, M21, M22, M23, M24, M25, M26, M27) | | |
| 0130M00025 | RELAY, SPDT | | |
| 0130M00038 | TERMINAL BOARD | | |
| 0130M00596 | TRANS, 150VA, 480V TO 230V (M8, M9, M10, M11, M12, M20, M21, M22, M23, M24) | | |
| 0130M00597 | TRANS, 150VA, 575V TO 230V (M25, M26, M27) | | |

Top Panel and Tubing Assembly

IMAGE 1

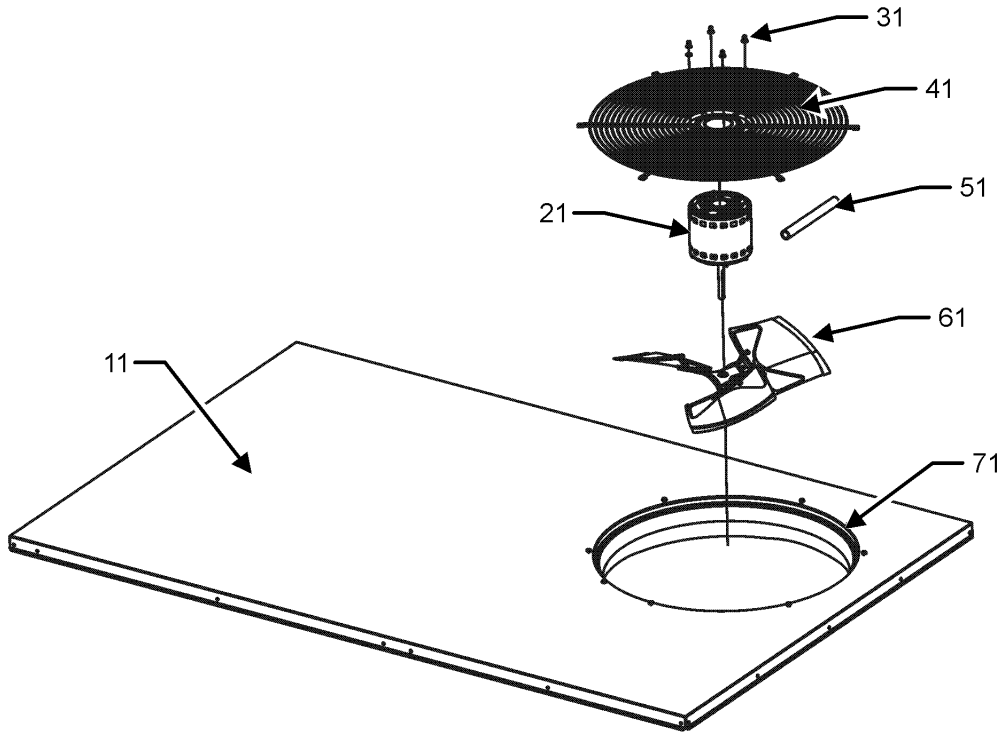
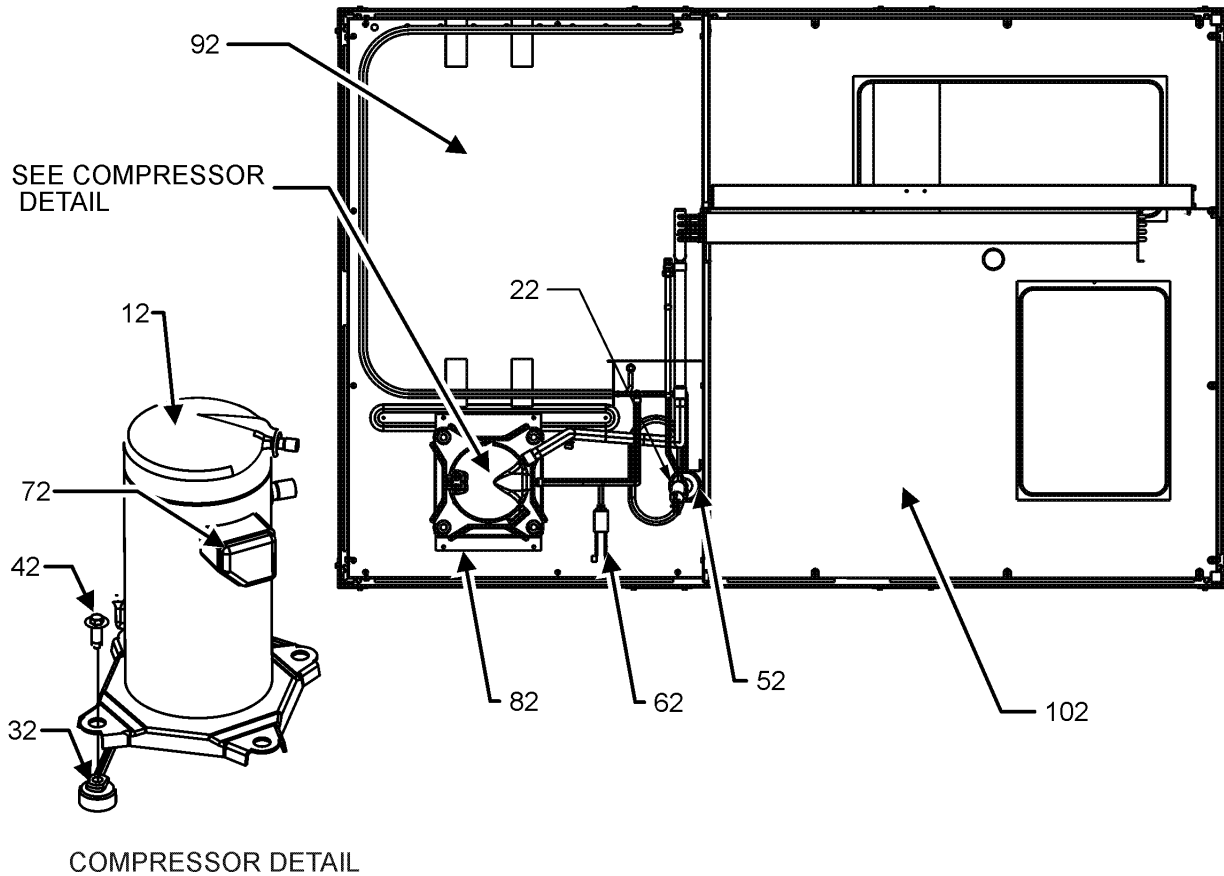


IMAGE 2



Top Panel and Tubing Assembly

Ref. Part

No: No: Description:

Image 1:

| | | |
|----|--------------|---|
| 11 | 0121L00235NG | TOP PANEL |
| 21 | 0131M00431 | COND MOTOR 575V (M25, M26, M27) |
| 21 | 0131M00847 | MOTOR, 1/4 HP, 1 SP, 6 PL (M2, M3, M4, M5, M6, M7, M13, M14, M15, M17, M18, M19) |
| 21 | 0131M00857 | MOTOR, 380/460 50/60 HZ (M8, M9, M10, M11, M12, M22, M23, M24) |
| 21 | 0131L00061 | Motor, Cond, 1/4 HP, 208/230V (M1, M16) |
| 21 | 0131L00062 | MOTOR, COND, 1/4 HP, 460V (M20, M21) |
| 31 | 0163M00006P | ACORN NUT 5/16 HEX BLACK (QTY 4) |
| 41 | 0152G00000 | FAN GRILLE, RAISED (M20, M21) |
| 41 | 0152G00003 | GRILLE-FAN (M1, M2, M3, M4, M5, M6, M7, M8, M9, M10, M11, M12, M13, M14, M15, M16, M17, M18, M19, M22, M23, M24, M25, M26, M27) |
| 51 | 0161R00003P | CONDUIT |
| 61 | 0150G00004 | FAN BLADE |
| 71 | 0161L00000 | VENTURI RING 22" |
| NS | 0163M00004 | SCREW #10X3/4", BLACK (QTY 2) |
| NS | 0163M00005P | WASHER, BLACK (.50 OD .218ID) (QTY 4) |

Image 2:

| | | |
|-----|---------------|--|
| 12 | ZP31K5ETFE130 | COMP, 31100,575/60/3 (M25, M26, M27) |
| 12 | ZP31K5ETF5130 | COMP, 31200,200/230/60/3 (M1, M2, M3, M4, M5, M6, M7, M13, M14, M15, M16, M17, M18, M19) |
| 12 | ZP31K5ETFD130 | COMP,31200,460/60/3 (M8, M9, M10, M11, M12, M20, M21, M22, M23, M24) |
| 22 | 0130L00007 | CUT-OUT SWITCH, LOW PRESSURE |
| 32 | B1339533 | COMPRESSOR GROMMET (QTY 4) |
| 42 | M0221641 | TF SHOULDER SCREW (QTY 4) |
| 52 | B1219225 | SINGLE-FLOW FILTER DRIER, STEEL |
| 62 | 0130M00209 | CUT-OUT SWITCH, HIGH PRESSURE |
| 72 | 0159L00065 | COMPRESSOR SCROLL HARNESS |
| 82 | 0121L00310 | COMPRESSOR MOUNTING PLATE |
| 92 | 0121L01990 | BASE PAN-OUTDOOR |
| 102 | 0121L02619 | BASE PAN-INDOOR |
| NS | B1373315 | ACCESS FITTING (QTY 2) |
| NS | 0141L00003X | FORK BOARD (QTY 2) |
| NS | 0121L00055 | FORK BOARD BRACKET (QTY 4) |

Ref. Part

No: No: Description:

Expanded Model Nomenclature

| |
|------------------------|
| M1 - DSG0360453HVDCAA |
| M2 - DSG0360453HWDAAA |
| M3 - DSG0360453HWXPAA |
| M4 - DSG0360703HRKBAA |
| M5 - DSG0360703HRKXAA |
| M6 - DSG0360703HWDAAA |
| M7 - DSG0360703HWJBAA |
| M8 - DSG0360704HHXXAA |
| M9 - DSG0360704HVXXAA |
| M10 - DSG0360704HWSBAA |
| M11 - DSG0360704HWXDAA |
| M12 - DSG0360704HWXNAA |
| M13 - DSG0360903HHXAAA |
| M14 - DSG0360903HWDAAA |
| M15 - DSG0360903HWXNAA |
| M16 - DSG0360903HWXVAA |
| M17 - DSG0360903HXSXAA |
| M18 - DSG0360903HXXAAA |
| M19 - DSG0360903HXXXAA |
| M20 - DSG0360904HHDCAA |
| M21 - DSG0360904HHDVAA |
| M22 - DSG0360904HHXAAA |
| M23 - DSG0360904HHXGAA |
| M24 - DSG0360904HXXZAA |
| M25 - DSG0360907HVXXAA |
| M26 - DSG0360907HXSXAA |
| M27 - DSG0360907HXXXAA |

Cabinet Assembly

IMAGE 1

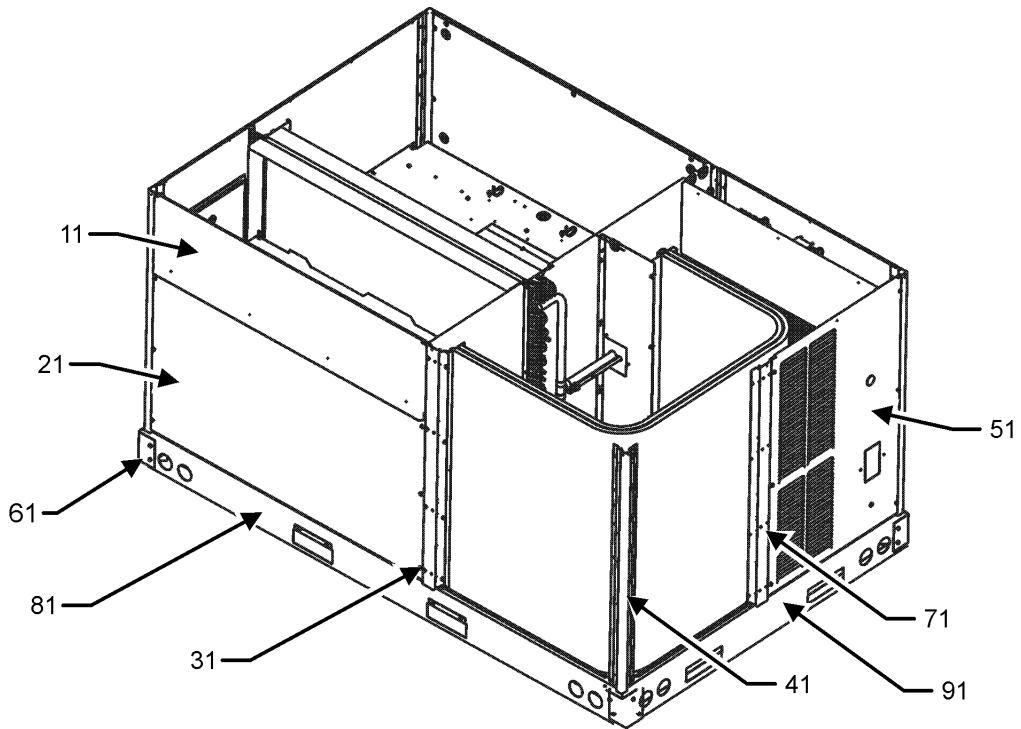
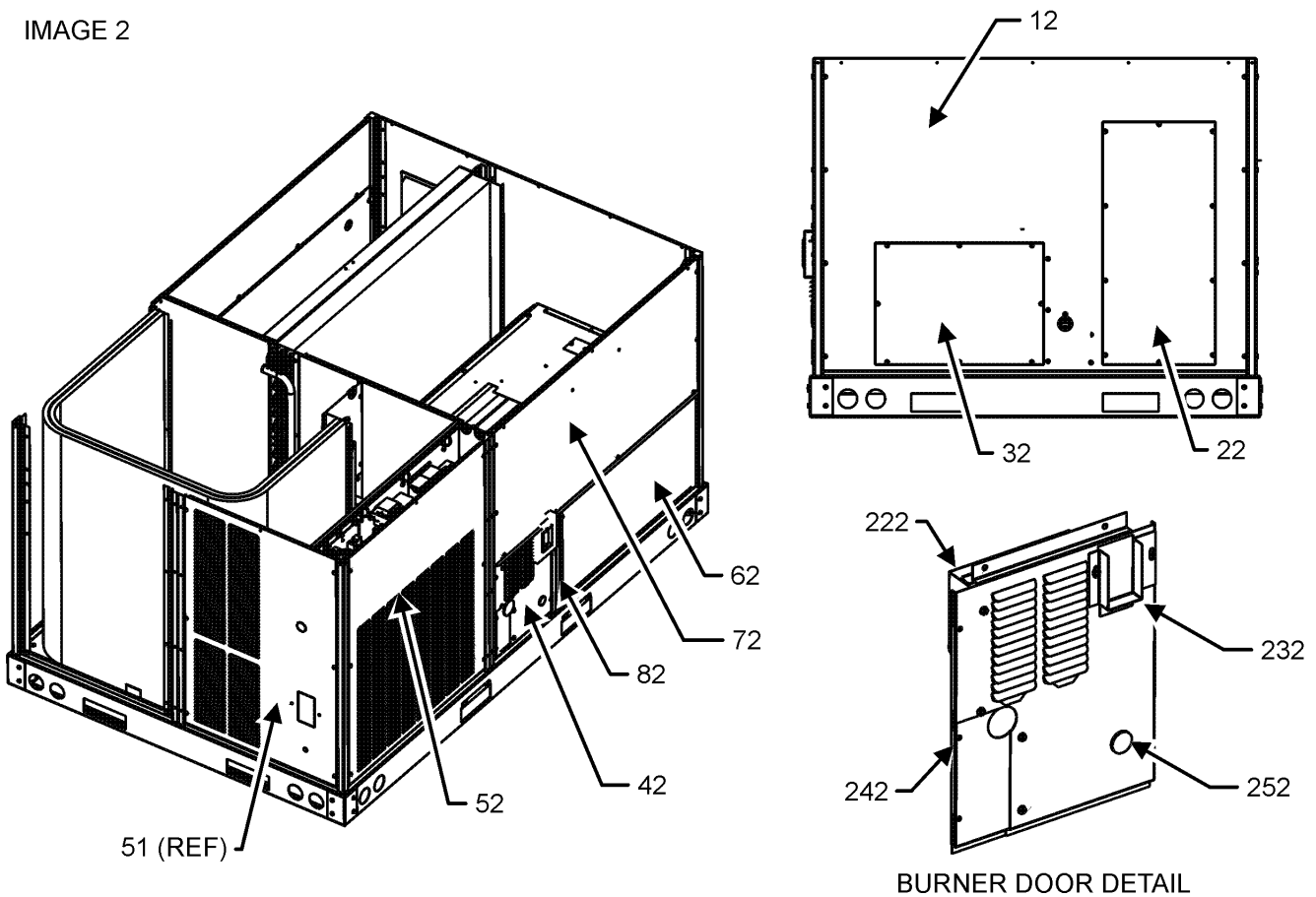


IMAGE 2



Cabinet Assembly

Ref. Part

No: No: Description:

Image 1:

| | | |
|----|----------------|--|
| 11 | 0270L00362NG | FILTER DOOR |
| 21 | 0121L00976NG | ECONOMIZER DOOR (M1, M2, M3, M6, M7, M8, M9, M10, M11, M12, M13, M14, M15, M16, M17, M18, M19, M20, M21, M22, M23, M24, M25, M26, M27) |
| 31 | 0121L00233RFNG | POST-SIDE SUPPORT (QTY 2) |
| 41 | 0121L00237RFNG | CORNER POST (QTY 2) |
| 41 | 0121L02553RFNG | PNT, CORNER POST (M1, M2, M4, M5, M6, M14, M20, M21) |
| 51 | 0121L00263NG | LOUVERED COMPRESSOR PANEL (M1, M9, M17, M18, M19, M24, M25, M26, M27) |
| 51 | 0121L00836NG | PNT, COMP LOUVER DISC PNL (M2, M3, M4, M5, M6, M7, M8, M10, M11, M12, M13, M14, M15, M16, M20, M21, M22, M23) |
| 61 | 0121G00301 | RAIL CORNER BRACKET (QTY 4) |
| 71 | 0121L01374RFNG | PNT, RL FMD SIDE POST SUPPORT (M1, M2, M4, M5, M6, M14, M20, M21) |
| 71 | 0121L01159RFNG | POST-SIDE SUPPORT (M3, M7, M8, M9, M10, M11, M12, M13, M15, M16, M17, M18, M19, M22, M23, M24, M25, M26, M27) |
| 81 | 0121L00244RF | SIDE RAIL (QTY 2) |
| 91 | 0121L00245 | END RAIL |
| NS | 0121L01309 | ECONOMIZER COVER (M4, M5) |
| NS | 0121L02655 | END RAIL |
| NS | 0164L00009 | GASKET-RUBBER, CPOST (QTY 3) |
| NS | 0164L00011 | GASKET-RUBBER, SIDE POST (QTY 3) |

Image 2:

| | | |
|-----|----------------|---|
| 12 | 0121L00236NG | DUCT PANEL |
| 22 | 0121L00023NG | RETURN DUCT COVER |
| 32 | 0121L00024NG | SUPPLY DUCT COVER |
| 42 | 0121L01438NG | BURNER DOOR |
| 52 | 0121L01121NG | CONTROL PANEL W/LOUVERS (M3, M7, M8, M9, M10, M11, M12, M13, M15, M16, M17, M18, M19, M22, M23, M24, M25, M26, M27) |
| 52 | 0121L02551NG | PNT, CONTROL DOOR (M1, M2, M4, M5, M6, M14, M20, M21) |
| 62 | 0121L01108NG | HEAT EXCHANGER DOOR |
| 72 | 0121L01157NG | BLOWER DOOR |
| 82 | 0121L01110RFNG | POST-BURNER |
| 222 | 0121L01439 | RAIN SHIELD DOOR |
| 232 | 0121L01440NG | FLUE COLLAR |
| 242 | 0121L01441NG | BURNER DOOR PANEL |
| 252 | B1392139 | VIEW PORT BUSHING, CLEAR 1.00 |
| NS | B1910010 | GAS LINE GROMMET |

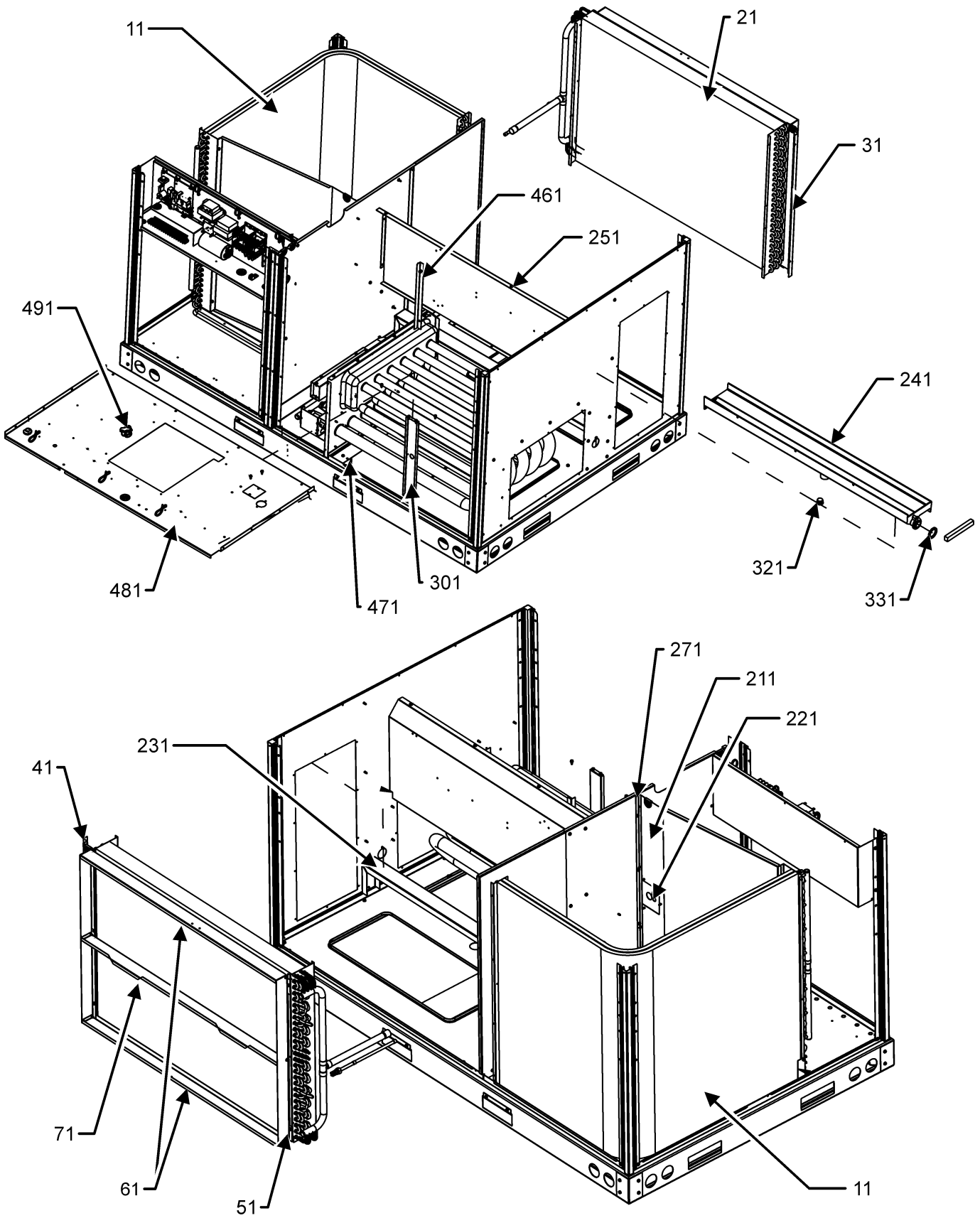
Ref. Part

No: No: Description:

Expanded Model Nomenclature

| |
|------------------------|
| M1 - DSG0360453HVDCAA |
| M2 - DSG0360453HWDAAA |
| M3 - DSG0360453HWXPAA |
| M4 - DSG0360703HRKBAA |
| M5 - DSG0360703HRKXAA |
| M6 - DSG0360703HWDAAA |
| M7 - DSG0360703HWJBAA |
| M8 - DSG0360704HHXXAA |
| M9 - DSG0360704HVXXAA |
| M10 - DSG0360704HWSBAA |
| M11 - DSG0360704HWXDAA |
| M12 - DSG0360704HWXNAA |
| M13 - DSG0360903HHXAAA |
| M14 - DSG0360903HWDAAA |
| M15 - DSG0360903HWXNAA |
| M16 - DSG0360903HWXVAA |
| M17 - DSG0360903HXSXAA |
| M18 - DSG0360903HXXAAA |
| M19 - DSG0360903HXXXAA |
| M20 - DSG0360904HHDCAA |
| M21 - DSG0360904HHDVAA |
| M22 - DSG0360904HHXAAA |
| M23 - DSG0360904HHXGAA |
| M24 - DSG0360904HXXZAA |
| M25 - DSG0360907HVXXAA |
| M26 - DSG0360907HXSXAA |
| M27 - DSG0360907HXXXAA |

Partition Assembly

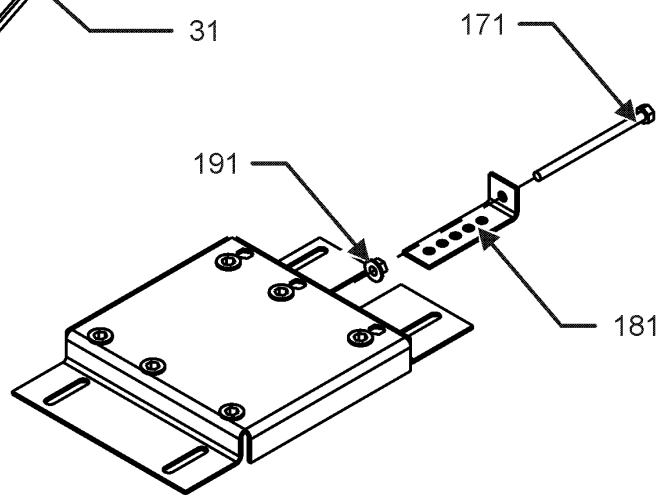
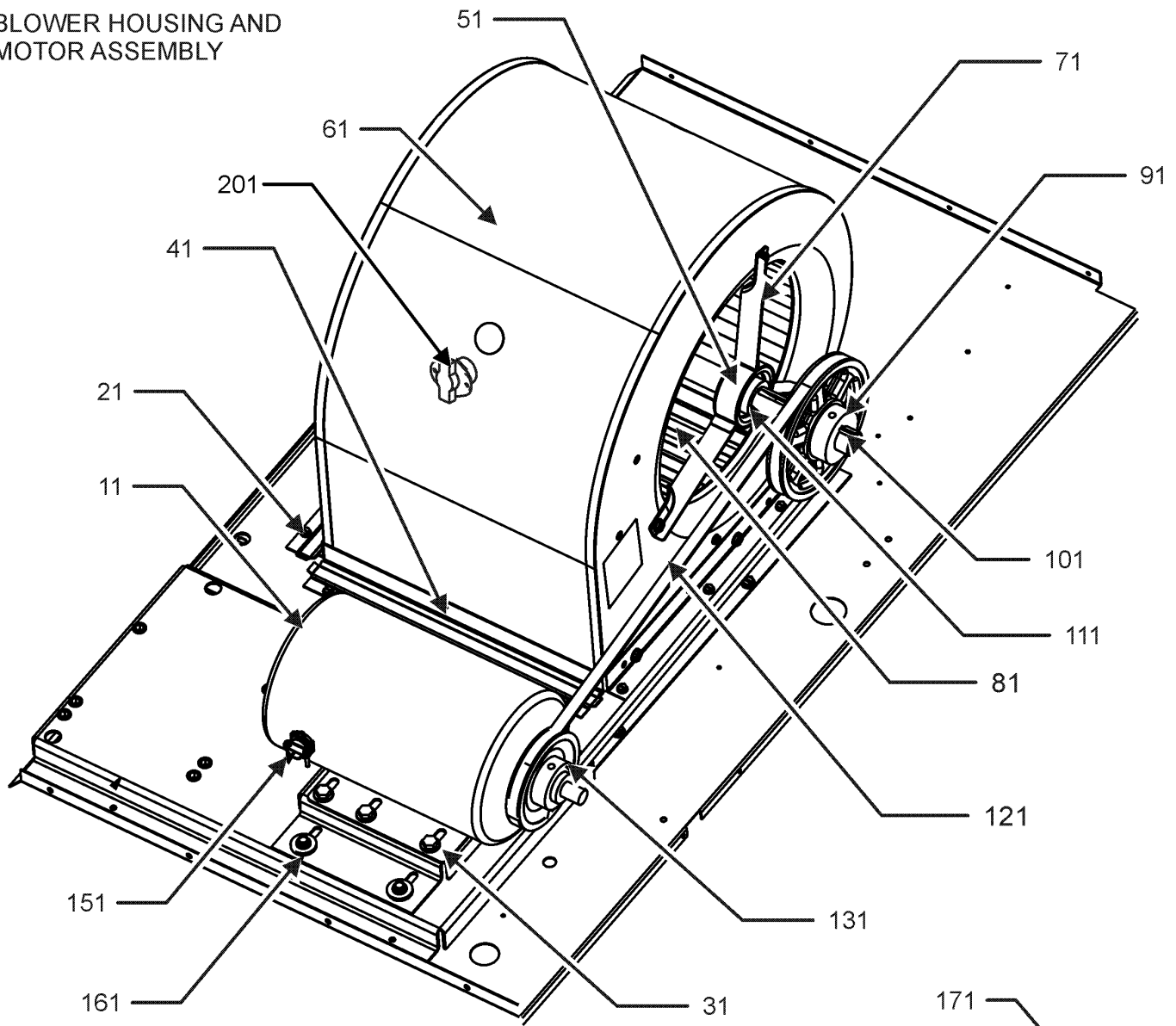


Partition Assembly

| Ref. Part No: | Ref. Part No: | Description: | Description: |
|-----------------|---------------|--|------------------------|
| Image 1: | | Expanded Model Nomenclature | |
| 11 | 0201L00036 | TUBING ASSY, COND COIL | M1 - DSG0360453HVDCAA |
| 21 | 0202L00154 | EVAP COIL TUBING ASSY | M2 - DSG0360453HWDAAA |
| 31 | 0121L00313 | BLOCKOFF-EVAPORATOR (M1, M2, M3, M4, M5, M6, M7, M8, M9, M10, M13, M14, M17, M18, M19, M20, M22, M25, M26, M27) | M3 - DSG0360453HWXPAA |
| 31 | 0121L00335 | BLOCKOFF-EVAPORATOR (M16, M21, M23) | M4 - DSG0360703HRKBAA |
| 31 | 0121L00336 | BLOCKOFF-EVAPORATOR (M11, M12, M15, M24) | M5 - DSG0360703HRKXAA |
| 41 | 0121L00303 | FILTER ANGLE-VERTICAL (HAIRPIN SIDE) | M6 - DSG0360703HWDAAA |
| 51 | 0121L00287 | FILTER ANGLE-VERTICAL (RETURN SIDE) | M7 - DSG0360703HWJBAA |
| 61 | 0121L00932 | FILTER ANGLE-HORIZONTAL (QTY 2) | M8 - DSG0360704HHXXAA |
| 71 | 0121L01255 | ANGLE-FILTER CENTER | M9 - DSG0360704HVXXAA |
| 211 | 0121L00311 | COND BLOCK-OFF (M1, M2, M3, M4, M5, M6, M7, M8, M9, M10, M11, M12, M13, M14, M15, M16, M17, M18, M19, M20, M21, M22, M23, M24) | M10 - DSG0360704HWSBAA |
| 221 | 0121L00939 | CONDENSER BLOCKOFF PLATE | M11 - DSG0360704HWXDAA |
| 231 | 0121L00238 | DRAIN PAN SUPPORT | M12 - DSG0360704HWXNAA |
| 241 | 0161L00005 | DRAIN PAN | M13 - DSG0360903HHXAAA |
| 251 | 0121L02123 | DECK SIDE CHANNEL | M14 - DSG0360903HWDAAA |
| 271 | 0121L00254 | COND MOUNTING ANGLE | M15 - DSG0360903HWXNAA |
| 301 | 0121L00300 | POST-DECK SUPPORT | M16 - DSG0360903HWXVAA |
| 321 | 0163L00071 | DRAIN PLUG | M17 - DSG0360903HXSXAA |
| 331 | 0154L00009 | DRAIN PAN GASKET | M18 - DSG0360903HXXAAA |
| 461 | 0121L00293 | ANGLE-HEAT EXCHANGER BACK (QTY 2) | M19 - DSG0360903HXXXAA |
| 471 | 0121L00266 | HEAT PANEL CHANNEL (QTY 2) | M20 - DSG0360904HHDCAA |
| 481 | 0121L03396 | DECK-BLOWER | M21 - DSG0360904HHDVAA |
| 491 | B1370155 | AUXILIARY LIMIT SWITCH 1200 (M13, M14, M15, M16, M17, M18, M19, M20, M21, M22, M23, M24, M25, M26, M27) | M22 - DSG0360904HHXAAA |
| 491 | 0130F00038 | LIMIT, PRIMARY, 120, LT BLUE (M1, M2, M3) | M23 - DSG0360904HHXGAA |
| 491 | 0130F00037 | PRIMARY LIMIT - GRAY 150° (M4, M5, M6, M7, M8, M9, M10, M11, M12) | M24 - DSG0360904HXXZAA |
| NS | 0160L00173 | AIR FILTER 14 X20 X2 (M1, M2, M3, M4, M5, M6, M7, M8, M9, M10, M11, M12, M13, M14, M15, M16, M17, M18, M19, M20, M21, M23, M24, M25, M26, M27) | M25 - DSG0360907HVXXAA |
| NS | 0160L00138 | Air Filter 24x24x2 (M22) | M26 - DSG0360907HXSXAA |
| NS | 0121L01377 | BLOWER DECK SUPPORT (M1, M2, M4, M5, M6, M14, M20, M21) | M27 - DSG0360907HXXXAA |
| NS | A4568804 | GROMMET-D (QTY 4) | |
| NS | 0121L00321 | SMOKE DETECTOR COVER | |

Belt Drive Assembly

BLOWER HOUSING AND
MOTOR ASSEMBLY



MOUNTING PLATE ASSEMBLY

Belt Drive Assembly

**Ref. Part
No: No:**

Description:

**Ref. Part
No: No:**

Description:

Image 1:

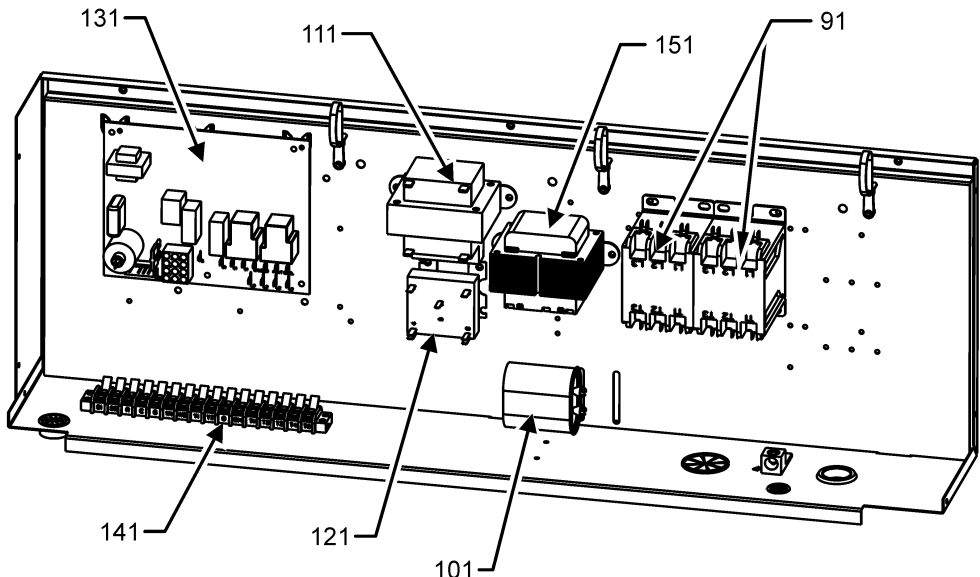
| | | |
|-----|------------|---|
| 11 | 0131L00003 | BELT DRIVE MOTOR 1 HP (M1, M2, M3, M4, M5, M6, M7, M8, M9, M10, M11, M12, M13, M14, M15, M16, M17, M18, M19, M20, M21, M22, M23, M24) |
| 11 | 0131L00004 | MOTOR-1.5 HP BELT DRIVE 575 (M25, M26, M27) |
| 21 | 0121L00297 | BLOWER SIDE ANGLE (QTY 3) |
| 31 | 0121L01619 | MOTOR BASE |
| 41 | 0121L00281 | BLOWER MOUNTING ANGLE |
| 51 | 0163L00005 | BELT DRIVE BLOWER SHAFT |
| 61 | 2539302F | BLOWER HOUSING 11 X 10 |
| 71 | B3201300 | MOUNTING BRACKET BEARING (QTY 2) |
| 81 | B1368056 | BELT DRIVE BLOWER WHEEL |
| 91 | 0163L00135 | SHEAVE, FIXED AK66H |
| 101 | 0163M00407 | MACHINE KEY, SPECIAL |
| 111 | 0163L00247 | BEARING, BALL, MOUNTED (QTY 2) |
| 121 | 0164L00002 | NOTCHED FAN BELT |
| 131 | 0163L00061 | SHEAVE, ADJUSTABLE |
| 151 | B1393726 | ELECT. CONNECTING BUSHING |
| 161 | B1393738 | BOLT 1/4-20 X 3/4" (QTY 4) |
| 171 | 0163M00045 | BOLT 1/4-20 X 4" |
| 181 | 3225000F | BELT TIGHTENER ANGLE |
| 191 | B1393023 | NUT / LOCK .25-20 |
| 201 | 0130M00063 | PRIMARY LIMIT - GOLD 140° (M1, M2, M3, M4, M5, M6, M7, M8, M9, M10, M11, M12) |
| 201 | 20162905 | PRIMARY LIMIT-YELLOW (M13, M14, M15, M16, M17, M18, M19, M20, M21, M22, M23, M24, M25, M26, M27) |
| NS | 1864703 | BLOWER CUT-OFF ASM,5TON,MORRIS |
| NS | B1398603 | STEEL KEY (000158812) 4.5" |

Expanded Model Nomenclature

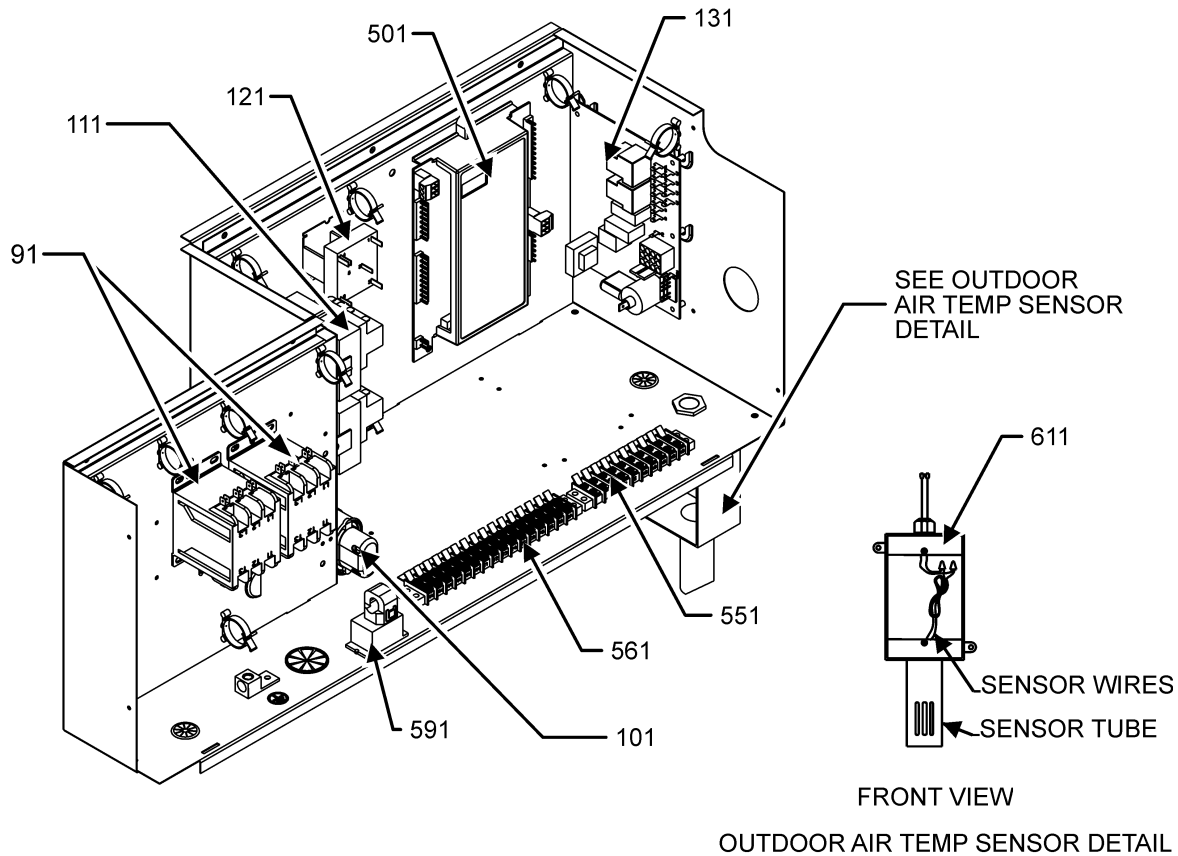
| |
|------------------------|
| M1 - DSG0360453HVDCAA |
| M2 - DSG0360453HWDAAA |
| M3 - DSG0360453HWPAAA |
| M4 - DSG0360703HRKBAA |
| M5 - DSG0360703HRKXAA |
| M6 - DSG0360703HWDAAA |
| M7 - DSG0360703HWJBAA |
| M8 - DSG0360704HHXXAA |
| M9 - DSG0360704HVXXAA |
| M10 - DSG0360704HWSBAA |
| M11 - DSG0360704HWXDAA |
| M12 - DSG0360704HWXNAA |
| M13 - DSG0360903HHXAAA |
| M14 - DSG0360903HWDAAA |
| M15 - DSG0360903HWXNAA |
| M16 - DSG0360903HWXVAA |
| M17 - DSG0360903HXSXAA |
| M18 - DSG0360903HXXAAA |
| M19 - DSG0360903HXXXAA |
| M20 - DSG0360904HHDCAA |
| M21 - DSG0360904HHDVAA |
| M22 - DSG0360904HHXAAA |
| M23 - DSG0360904HHXGAA |
| M24 - DSG0360904HXXZAA |
| M25 - DSG0360907HVXXAA |
| M26 - DSG0360907HXSXAA |
| M27 - DSG0360907HXXXAA |

Control Box Assembly

CONTROL BOX ASSEMBLY



CONTROL BOX FOR MODELS WITH DDC CONTROL/PHASE MONITOR



FRONT VIEW
OUTDOOR AIR TEMP SENSOR DETAIL

Control Box Assembly

| Ref. Part No: | No: | Description: | Ref. Part No: | No: | Description: |
|-----------------|----------------|---|------------------------------------|-----|------------------|
| Image 1: | | | Expanded Model Nomenclature | | |
| 91 | CONT3P025024V | CONTACTOR 25 AMP, 3P, 24V (M8, M9, M10, M11, M12, M20, M21, M22, M23, M24, M25, M26, M27) | M1 | - | DSG0360453HVDCAA |
| 91 | CONT3P030024V | CONTACTOR 30 AMP, 3P, 24V (M1, M2, M3, M4, M5, M6, M7, M13, M14, M15, M16, M17, M18, M19) | M2 | - | DSG0360453HWDAAA |
| 101 | CAP075000440LA | CAP 7.5 MFD/440V/OVAL (M8, M9, M10, M11, M12, M20, M21, M22, M23, M24) | M3 | - | DSG0360453HWXPAA |
| 101 | CAP030000440LA | CAPACITOR (M25, M26, M27) | M4 | - | DSG0360703HRKBAA |
| 101 | CAP050000370LA | CAPACITOR 5/370V (M4, M5, M20, M21) | M5 | - | DSG0360703HRKXAA |
| 101 | CAP050000440LA | CAPACITOR 5/440V (M1, M2, M3, M4, M5, M6, M7, M13, M14, M15, M16, M17, M18, M19) | M6 | - | DSG0360703HWDAAA |
| 111 | 0130M00597 | TRANS, 150VA, 575V TO 230V (M25, M26, M27) | M7 | - | DSG0360703HWJBAA |
| 111 | 0130M00138 | TRANSFORMER 208/230, 24V (M1, M2, M3, M4, M5, M6, M7, M13, M14, M15, M16, M17, M18, M19) | M8 | - | DSG0360704HHXXAA |
| 111 | 0130M00595 | TRANSFORMER, 75VA, 480V TO 24V (M8, M9, M10, M11, M12, M20, M21, M22, M23, M24) | M9 | - | DSG0360704HVXXAA |
| 121 | 0130M00025 | RELAY, SPDT | M10 | - | DSG0360704HWSBAA |
| 131 | PCBAG123 | PCB, IGNITION, DSI | M11 | - | DSG0360704HWXDAA |
| 141 | 0130M00038 | TERMINAL BOARD | M12 | - | DSG0360704HWXNAA |
| 151 | 0130M00596 | TRANS, 150VA, 480V TO 230V (M8, M9, M10, M11, M12, M20, M21, M22, M23, M24) | M13 | - | DSG0360903HHXAAA |
| 151 | 0130M00598 | TRANSFORMER, 75VA, 575V TO 24V (M25, M26, M27) | M14 | - | DSG0360903HWDAAA |
| 501 | PCBCG103 | PCB, CONTROL, HP, GAS, AC (M4, M5) | M15 | - | DSG0360903HWXNAA |
| 551 | 0130M00274 | TERMINAL BOARD (M4, M5) | M16 | - | DSG0360903HWXVAA |
| 561 | 0130M00275 | TERMINAL BOARD (M4, M5) | M17 | - | DSG0360903HXSXAA |
| 591 | 0259L00368 | CURRENT SWITCH WITH TERMS (M4, M5) | M18 | - | DSG0360903HXXAAA |
| 611 | 0130L00108 | OD Air Temp Sensor (M4, M5) | M19 | - | DSG0360903HXXXAA |
| NS | B821700 | BOOT, CAPACITOR (M4, M5) | M20 | - | DSG0360904HHDCAA |
| NS | 20520901 | CAPACITOR STRAP | M21 | - | DSG0360904HHDVAA |
| NS | 0259L00074 | CONTROL HARNESS (M1, M2, M3, M4, M5, M6, M7, M13, M14, M15, M16, M17, M18, M19) | M22 | - | DSG0360904HHXAAA |
| NS | 0259L00075 | CONTROL HARNESS (M8, M9, M10, M11, M12, M20, M21, M22, M23, M24, M25, M26, M27) | M23 | - | DSG0360904HHXGAA |
| NS | 0121L01468 | CONTROL, PH MON BOX (M7) | M24 | - | DSG0360904HXXZAA |
| NS | 0121L01467 | CONTROL, PH MON LID (M7) | M25 | - | DSG0360907HVXXAA |
| NS | 0130L00112 | Duct Temp Sensor (M4, M5) | M26 | - | DSG0360907HXSXAA |
| NS | 0259L00179 | HARNESS, ECONOMIZER | M27 | - | DSG0360907HXXXAA |
| NS | 0259L00179 | HARNESS, ECONOMIZER | | | |
| NS | 0259L00067 | MALE PLUG ASS 12 PIN | | | |
| NS | 0130L00105 | PHASE MONITOR (M7) | | | |
| NS | 0130L00107 | ROOM SENSOR (M4, M5) | | | |
| NS | 0259L00427 | WIRE ASSY (M7) | | | |
| NS | 0259L00428 | WIRE ASSY (M7) | | | |
| NS | 0259L00090 | WIRE HARNESS-SMOKE DETECTOR (M16, M21, M23) | | | |
| NS | 0259L00054 | WIRING HARNESS | | | |
| NS | 0259L00065 | WIRING HARNESS | | | |
| NS | 0259L00069 | WIRING HARNESS (M4, M5, M6, M7, M8, M9, M10, M11, M12, M13, M14, M15, M16, M17, M18, M19, M20, M21, M22, M23, M24, M25, M26, M27) | | | |
| NS | 0259L00070 | WIRING HARNESS (M20, M21) | | | |

Heat Exchange Assembly

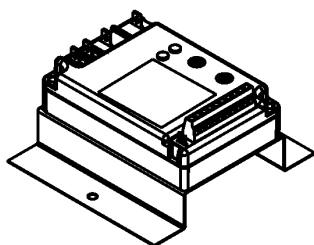
| Ref. Part No: | Ref. Part No: | Description: | Description: |
|-----------------|---------------|--|------------------------|
| Image 1: | | Expanded Model Nomenclature | |
| 11 | 20261709 | IGNITOR | M1 - DSG0360453HVDCAA |
| 21 | 0151F00000P | GAS VALVE - WHITE-RODGERS 2-STAGE (M4, M5, M6, M7, M8, M9, M10, M11, M12, M13, M14, M15, M16, M17, M18, M19, M20, M21, M22, M23, M24, M25, M26, M27) | M2 - DSG0360453HWDAAA |
| 21 | 0151M00013 | VALVE, GAS (HW) SINGLE STAGE (M1, M2, M3) | M3 - DSG0360453HWXPAA |
| 31 | 0163F00018 | ORIFICE (QTY 2) | M4 - DSG0360703HRKBAA |
| 41 | 0130F00010 | FLAME SENSOR | M5 - DSG0360703HRKXAA |
| 61 | 0163L00143 | MANIFOLD, GAS 3 BURNER (M4, M5, M6, M7, M8, M9, M10, M11, M12) | M6 - DSG0360703HWDAAA |
| 61 | 0163L00027 | MANIFOLD-GAS 2 BURNER (M1, M2, M3) | M7 - DSG0360703HWJBAA |
| 61 | 0163L00026 | MANIFOLD-GAS 4 BURNER (M13, M14, M15, M16, M17, M18, M19, M20, M21, M22, M23, M24, M25, M26, M27) | M8 - DSG0360704HHXXAA |
| 71 | 10735102 | BECKETT BURNER (QTY 2) | M9 - DSG0360704HVXXAA |
| 81 | 20190410 | BRKT-BURNER 2B FUR (M1, M2, M3) | M10 - DSG0360704HWSBAA |
| 81 | 0121L02164 | BRKT-BURNER 3B FUR (M4, M5, M6, M7, M8, M9, M10, M11, M12) | M11 - DSG0360704HWXDAA |
| 81 | 20190412 | BRKT-BURNER 4B FUR (M13, M14, M15, M16, M17, M18, M19, M20, M21, M22, M23, M24, M25, M26, M27) | M12 - DSG0360704HWXNAA |
| 91 | 0131M00121 | BLOWER-ID COMBUSTION | M13 - DSG0360903HHXAAA |
| 101 | 0270L00099 | PART/TUBE ASSY 2B (M1, M2, M3) | M14 - DSG0360903HWDAAA |
| 101 | 0270L00940 | PART/TUBE ASSY, 3B (M6, M8, M9, M11, M12) | M15 - DSG0360903HWXNAA |
| 101 | 0270L00092 | PART/TUBE ASSY, 4B (M13, M14, M15, M16, M18, M19, M20, M21, M22, M23, M24, M25, M27) | M16 - DSG0360903HWXVAA |
| 101 | 0270L00105 | PART/TUBE ASSY, 4B (M17, M26) | M17 - DSG0360903HXSXAA |
| 101 | 0270L01090 | PART/TUBE ASSY., 3B (M4, M5, M7, M10) | M18 - DSG0360903HXXAAA |
| 111 | 10123532 | MANUAL RESET LIMIT 350°F | M19 - DSG0360903HXXXAA |
| 121 | 11112501 | PRESSURE SWITCH | M20 - DSG0360904HHDCAA |
| 131 | 0121L00053 | BRACKET-FLAME ROLLOUT | M21 - DSG0360904HHDVAA |
| 181 | 0154L00018 | GASKET- ID BLOWER PLATE 2,4 | M22 - DSG0360904HHXAAA |
| 201 | 0121L00285 | PLATE-ID BLOWER 2 (M1, M2, M3) | M23 - DSG0360904HHXGAA |
| 201 | 0121L00284 | PLATE-ID BLOWER 4 (M4, M5, M6, M7, M8, M9, M10, M11, M12, M13, M14, M15, M16, M17, M18, M19, M20, M21, M22, M23, M24, M25, M26, M27) | M24 - DSG0360904HXXZAA |
| 251 | 0154L00020 | GASKET-ID BLOWER | M25 - DSG0360907HVXXAA |
| 261 | 0121L00277 | FLUE-CHANNEL | M26 - DSG0360907HXSXAA |
| 271 | 0121L00278 | FLUE-SIDE COVER | M27 - DSG0360907HXXXAA |
| 281 | 0163L00072 | SCREEEN-FLUE | |
| 381 | 11072201 | SHIELD-ORF CO FUR (M1, M2, M3) | |
| 381 | 11072202 | SHIELD-ORF CO FUR (M4, M5, M6, M7, M8, M9, M10, M11, M12) | |
| 381 | 11072203 | SHIELD-ORF CO FUR (M13, M14, M15, M16, M17, M18, M19, M20, M21, M22, M23, M24, M25, M26, M27) | |
| 391 | 0121L00267 | BRACKET-BURNER SLIDE | |
| 451 | 0121L02618 | SUPPORT BRACKET | |
| 461 | 0121L01576 | SUPPORT BRACKET | |
| 471 | 0121L02617 | SUPPORT BRACKET | |

Accessory Parts List

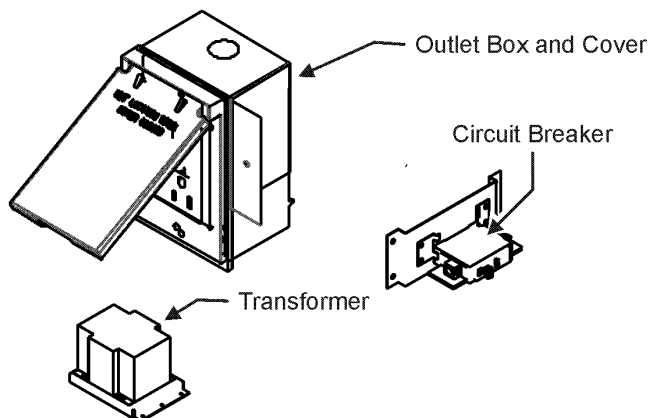
ACCESSORY PARTS LIST

NOTE: NOT ALL OPTIONS AVAILABLE FOR ALL PRODUCTS

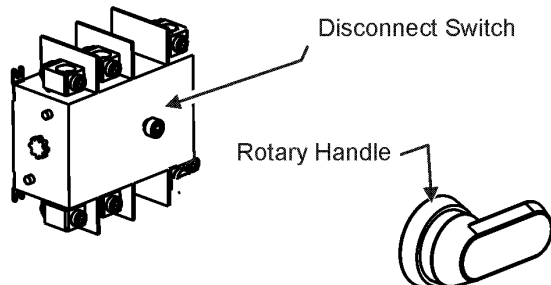
1 LOW AMBIENT KITS



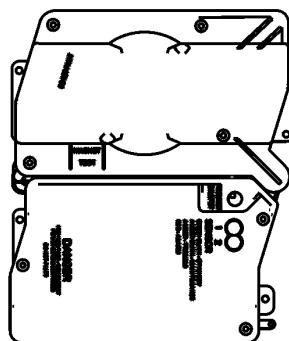
2 GFCI CONVENIENCE OUTLET



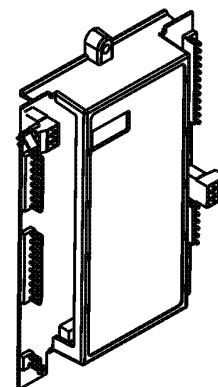
3 DISCONNECT MODULE (NON-FUSED)



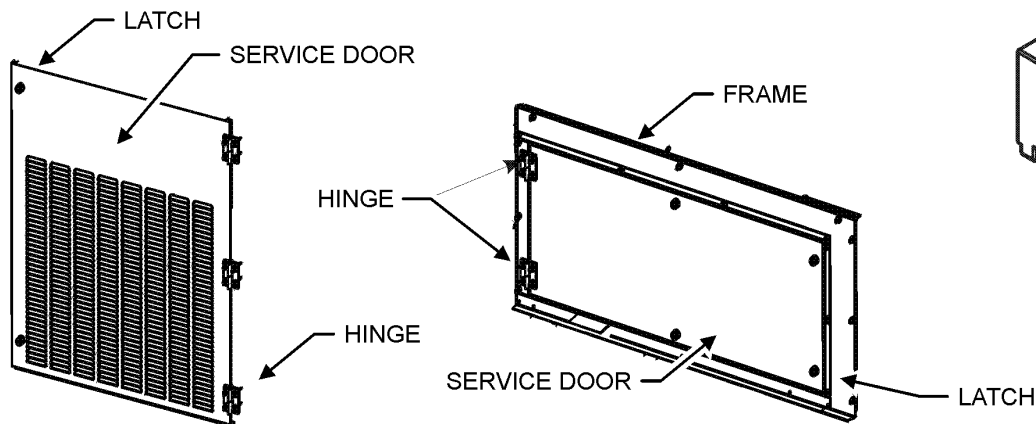
4 SMOKE DETECTORS



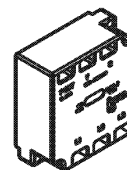
5 DDC CONTROL



6 HINGED DOOR ASSEMBLIES



7 PHASE MONITOR



Accessory Parts List

| Ref. Part No: | No: | Description: | Ref. Part No: | No: | Description: |
|-----------------|--------------|---|------------------------------------|-------------------|--------------|
| Image 1: | | | Expanded Model Nomenclature | | |
| NS | DDNECNJ3672C | 3-6 TON DFLOW ECONOMIZER (M1, M2, M3, M6, M7, M9, M10, M11, M12, M14, M15, M16, M25) | M1 - | DSG0360453HV DCAA | |
| NS | 10366D09C | 3-6 TON DFLOW ECONOMIZER, DDC (M4, M5) | M2 - | DSG0360453HWDAAA | |
| NS | 0121L01934 | BRACKET SMOKE DETECTOR (M16, M21, M23) | M3 - | DSG0360453HWPAAA | |
| NS | 0121L00316 | BRACKET-CONV OUTLET MOUNT (M2, M3, M4, M6, M7, M10, M12, M13, M14, M15, M18, M22, M23) | M4 - | DSG0360703HRKBAA | |
| NS | 0121L00835 | BRACKET-DISCONNECT SWITCH (M2, M3, M4, M5, M6, M7, M8, M10, M11, M12, M13, M14, M15, M16, M20, M21, M22, M23) | M5 - | DSG0360703HRKXAA | |
| NS | 0130M00065 | CIRCUIT BREAKER, CONVENIENCE OUTLET (M3, M4, M7, M10, M12, M15) | M6 - | DSG0360703HWDAAA | |
| NS | 0121L00837NG | DISCONNECT COVER (M2, M3, M4, M5, M6, M7, M8, M10, M11, M12, M13, M14, M15, M16, M20, M21, M22, M23) | M7 - | DSG0360703HWJBAA | |
| NS | 0130L00012 | GANG BOX-GFCI OUTLET (M2, M3, M4, M6, M7, M10, M12, M13, M14, M15, M18, M22, M23) | M8 - | DSG0360704HHXAAA | |
| NS | 0130L00039 | HANDLE, ROTARY (M2, M3, M4, M5, M6, M7, M8, M10, M11, M12, M13, M14, M15, M16, M20, M21, M22, M23) | M9 - | DSG0360704HVXAAA | |
| NS | 0163M00307 | HINGE, LEFT HAND (M1, M2, M4, M5, M6, M14, M20, M21) | M10 - | DSG0360704HWSBAA | |
| NS | 0163M00308 | HINGE, RIGHT HAND (M1, M2, M4, M5, M6, M14, M20, M21) | M11 - | DSG0360704HWXAAA | |
| NS | 0163M00360 | LATCH (M1, M2, M4, M5, M6, M14, M20, M21) | M12 - | DSG0360704HWXNAA | |
| NS | 0130M00058 | LOW AMBIENT KIT (M1, M16, M20, M21) | M13 - | DSG0360903HHXAAA | |
| NS | 0121L02509NG | PNT, BLOWER FRAME (M1, M2, M4, M5, M6, M14, M20, M21) | M14 - | DSG0360903HWDAAA | |
| NS | 0161G00012 | POWER OUTLET BOX (M2, M3, M4, M6, M7, M10, M12, M13, M14, M15, M18, M22, M23) | M15 - | DSG0360903HWXNAA | |
| NS | 0130L00103 | RECEPTACLE-GFCI OUTLET (M2, M3, M4, M6, M7, M10, M12, M13, M14, M15, M18, M22, M23) | M16 - | DSG0360903HWXVAA | |
| NS | 0121L02527NG | SERVICE DOOR BACK, BLOWER (M1, M2, M4, M5, M6, M14, M20, M21) | M17 - | DSG0360903HXSAAA | |
| NS | 0121L02526NG | SERVICE DOOR FRONT, BLOWER (M1, M2, M4, M5, M6, M14, M20, M21) | M18 - | DSG0360903HXXAAA | |
| NS | 0130L00042 | SHAFT, CUT (M2, M3, M4, M5, M6, M7, M8, M10, M11, M12, M13, M14, M15, M16, M20, M21, M22, M23) | M19 - | DSG0360903HXXXAA | |
| NS | 0130L00049 | SHAFT, DISCONNECT (M2, M3, M4, M5, M6, M7, M8, M10, M11, M12, M13, M14, M15, M16, M20, M21, M22, M23) | M20 - | DSG0360904HHDCAA | |
| NS | D4120 | SMOKE DETECTOR, PHOTO 4WIRE (M16, M21, M23) | M21 - | DSG0360904HHDVAA | |
| NS | D4S | SMOKE DETECTOR, SENSOR ONLY (M24) | M22 - | DSG0360904HHXAAA | |
| NS | 0130L00046 | SWITCH-DISCONNECT 60A (M2, M3, M4, M5, M6, M7, M8, M10, M11, M12, M13, M14, M15, M16, M20, M21, M22, M23) | M23 - | DSG0360904HHXGAA | |
| NS | 0130M00061 | TRANSFORMER, CONVENIENCE OUTLET (M3, M4, M7, M10, M12, M15) | M24 - | DSG0360904HXXZAA | |
| | | | M25 - | DSG0360907HVXAAA | |
| | | | M26 - | DSG0360907HXSAAA | |
| | | | M27 - | DSG0360907HXXXAA | |