

Commercial 3 Ton Direct Drive Package Gas Units

DSG0360451DVXBAA
DSG0360451DXSXAA
DSG0360451DXXXAA
DSG0360453DHXXAA
DSG0360453DJXCAA
DSG0360453DJXVAA
DSG0360453DXXXAA
DSG0360901DADAAA
DSG0360901DASBAA
DSG0360901DVXBAA
DSG0360901DVXXAA
DSG0360901DXSXAA
DSG0360901DXXXAA
DSG0360903DHDAAA
DSG0360903DHMUAA
DSG0360903DHBAAA
DSG0360903DHXXAA
DSG0360903DVXDAA
DSG0360903DWDAAA
DSG0360903DXDXAA
DSG0360903DXXBAA
DSG0360903DXXJAA
DSG0360903DXXXAA



This manual is to be used by qualified technicians only.

This manual replaces RP-D1122H.

Important Information

Index

Functional Parts List	3
Illustration and Parts	4 - 15

Views shown are for parts illustrations only, not servicing procedures.

Text Codes:

AR - As Required

NA - Not Available

NS - Not Shown

00000000 - See Note

QTY - Quantity Example (QTY 3) (If Quantity not shown, Quantity = 1)

M - Model Example (M1) (If M Code not shown, then part is used on all Models)

Expanded Model Nomenclature:

Example
M1 - Model#1
M2 - Model#2
M3 - Model#3

Daikin Company, L.P. is not responsible for personal injury or property damage resulting from improper service. Review all service information before beginning repairs.

Warranty service must be performed by an authorized technician, using authorized factory parts. If service is required after the warranty expires, Daikin Company, L.P. also recommends contacting an authorized technician and using authorized factory parts.

Daikin Company, L.P. reserves the right to discontinue, or change at any time, specifications or designs without notice or without incurring obligations.

For assistance within the U.S.A. contact:

Equipment Support
Daikin North America, LLC
19001 Kermier Road
Waller, Texas 77484
855-770-5678-Telephone
713-863-2382-Facsimile

For assistance outside the U.S.A. contact:

International Division
Daikin North America, LLC
19001 Kermier Road
Waller, Texas 77484
713-861-2500-Telephone
713-863-2382-Facsimile

Functional Parts

Part

No: Description:

B1370155	AUXILIARY LIMIT SWITCH 120°F (M14, M15, M16, M17, M18, M19, M20, M21, M22, M23)
20269903	AUXILIARY LIMIT, AUTO RESET (M8, M9, M10, M11, M12, M13, M14, M15, M16, M17, M18, M19, M20, M21, M22, M23)
0163F00017	BECKETT BURNER (M1, M2, M3, M8, M9, M10, M11, M12, M13)
10735102	BECKETT BURNER (M4, M5, M6, M7, M14, M15, M16, M17, M18, M19, M20, M21, M22, M23)
0131M00126	BLOWER MOTOR
D6723303	BLOWER WHEEL
CAP100000440LA	CAP 10 MFD/440V/OVAL (M5, M6, M15)
CAP100450440CS	CAP, 10/45 MFD/ 440V DUAL RD (M1, M2, M3, M8, M9, M10, M11, M12, M13)
ZP31K5EPFV130	COMPRESSOR 31100, 208/230/60/1 (M1, M2, M3, M8, M9, M10, M11, M12, M13)
ZP31K5ETF5130	COMPRESSOR 31200, 200/230/60/3 (M4, M5, M6, M7, M14, M15, M16, M17, M18, M19, M20, M21, M22, M23)
CONT3P025024V	CONTACTOR 25 AMP, 3P, 24V (M4, M5, M6, M7, M14, M15, M16, M17, M18, M19, M20, M21, M22, M23)
CONT1P030024V	CONTACTOR 30 AMP, 1P, 24V (M1, M2, M3, M8, M9, M10, M11, M12, M13)
0130M00209	CUT-OUT SWITCH, HIGH PRESSURE
0130L00007	CUT-OUT SWITCH, LOW PRESSURE
0150G00004	FAN BLADE
0130F00010	FLAME SENSOR
0151F00000P	GAS VALVE - WHITE-RODGERS 2-STAGE (M8, M9, M10, M11, M12, M13, M14, M15, M16, M17, M18, M19, M20, M21, M22, M23)
PCBAG123	IGNITION BOARD, DSI INTEGRATED
20261709	IGNITOR
0130M00064	LIMIT (M1, M2, M3, M4, M5, M6, M7)
0130F00105	LIMIT SWITCH (M8, M9, M10, M11, M12, M13)
10123532	LIMIT-RESET MAN-GRAY
0131M00837	MOTOR, 1/4 HP, OD (M1, M2, M3, M4, M7, M8, M9, M10, M11, M12, M13, M14, M16, M17, M18, M19, M20, M21, M22, M23)
0131L00061	Motor, Cond, 1/4 HP, 208/230V (M5, M6, M15)
11112501	PRESSURE SWITCH
0130M00063	PRIMARY LIMIT - GOLD 140° (M4, M5, M6, M7)
0130F00036	PRIMARY LIMIT - PINK (M1, M2, M3)
0130M00138	TRANSFOMER, 208/230, 24V
0151M00013	VALVE, GAS (HW) SINGLE STAGE (M1, M2, M3, M4, M5, M6, M7)

Expanded Model Nomenclature

M1 - DSG0360451DVXBAA
M2 - DSG0360451DXSXAA
M3 - DSG0360451DXXXAA
M4 - DSG0360453DHXXAA
M5 - DSG0360453DJXCAA
M6 - DSG0360453DJXVAA
M7 - DSG0360453DXXXAA
M8 - DSG0360901DADAAA
M9 - DSG0360901DASBAA
M10 - DSG0360901DVXBAA
M11 - DSG0360901DVXXAA
M12 - DSG0360901DXSXAA
M13 - DSG0360901DXXXAA
M14 - DSG0360903DHDAAA
M15 - DSG0360903DHMUAA
M16 - DSG0360903DHXBAA
M17 - DSG0360903DHXXAA
M18 - DSG0360903DVXDAA
M19 - DSG0360903DWDAAA
M20 - DSG0360903DXDXAA
M21 - DSG0360903DXXBAA
M22 - DSG0360903DXXJAA
M23 - DSG0360903DXXXAA

Top Panel and Tubing Assembly

IMAGE 1

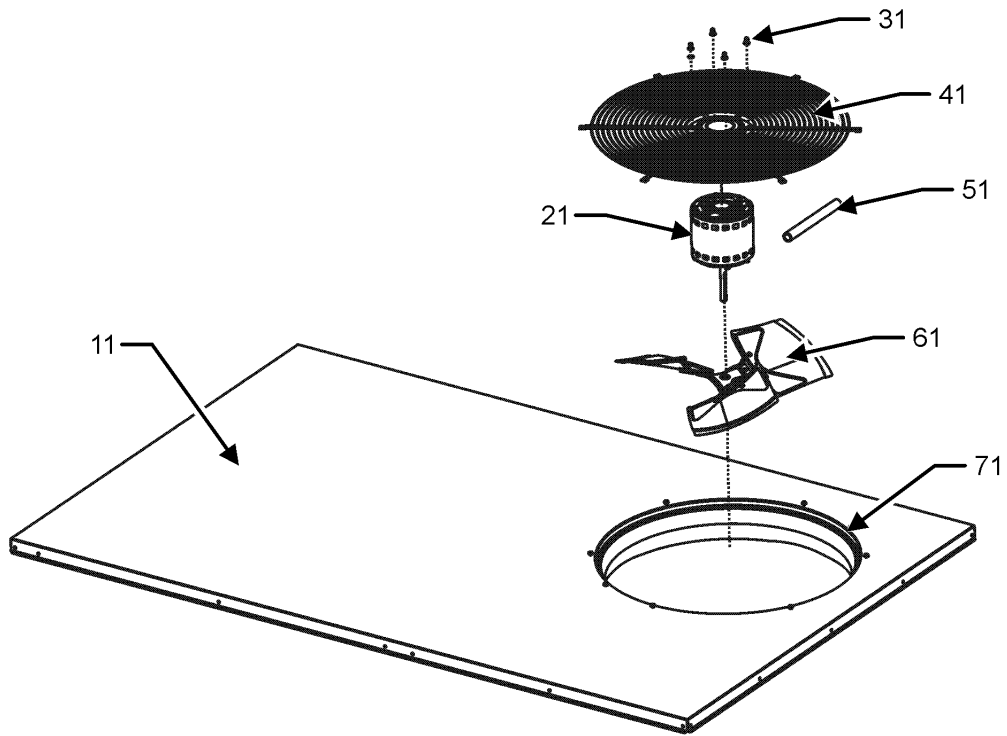
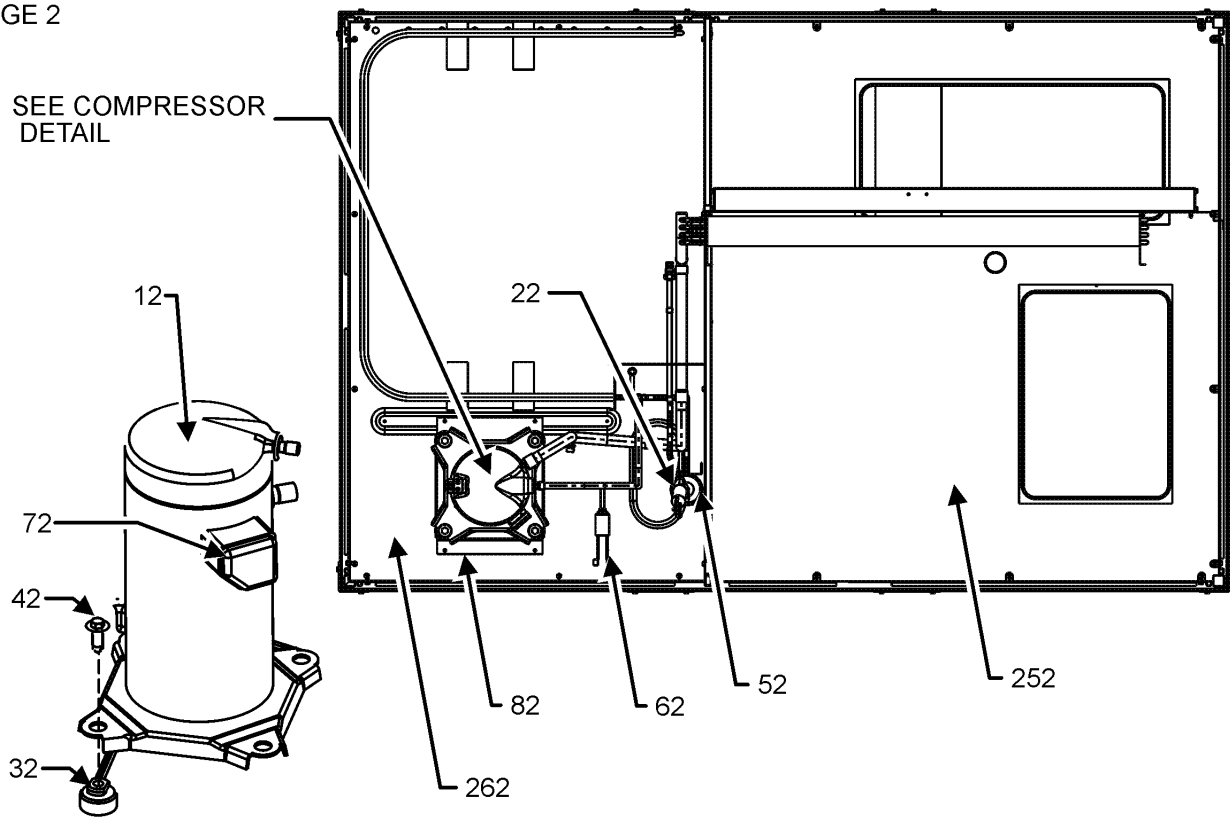


IMAGE 2

SEE COMPRESSOR
DETAIL



COMPRESSOR DETAIL

Top Panel and Tubing Assembly

Ref. Part No:	No:	Description:	Ref. Part No:	No:	Description:
Image 1:			Expanded Model Nomenclature		
11	0121L00235NG	TOP PANEL	M1	-	DSG0360451DVXBAA
21	0131M00837	MOTOR, 1/4 HP, OD (M1, M2, M3, M4, M7, M8, M9, M10, M11, M12, M13, M14, M16, M17, M18, M19, M20, M21, M22, M23)	M2	-	DSG0360451DXSXAA
21	0131L00061	Motor, Cond, 1/4 HP, 208/230V (M5, M6, M15)	M3	-	DSG0360451DXXXAA
31	0163M00006P	ACORN NUT 5/16 HEX BLACK (QTY 4)	M4	-	DSG0360453DHXXAA
41	0152G00000	FAN GRILLE, RAISED	M5	-	DSG0360453DJXCAA
51	0161R00003P	CONDUIT	M6	-	DSG0360453DJXVAA
61	0150G00004	FAN BLADE	M7	-	DSG0360453DXXXAA
71	0161L00000	VENTURI RING 22"	M8	-	DSG0360901DADAAA
NS	0163M00004	SCREW #10X3/4", BLACK (QTY 18)	M9	-	DSG0360901DASBAA
NS	0163M00005P	WASHER, BLACK (.50 OD .218ID) (QTY 4)	M10	-	DSG0360901DVXBAA
Image 2:			M11	-	DSG0360901DVXXAA
12	ZP31K5EPFV130	COMPRESSOR 31100, 208/230/60/1 (M1, M2, M3, M8, M9, M10, M11, M12, M13)	M12	-	DSG0360901DXSXAA
12	ZP31K5ETF5130	COMPRESSOR 31200, 200/230/60/3 (M4, M5, M6, M7, M14, M15, M16, M17, M18, M19, M20, M21, M22, M23)	M13	-	DSG0360901DXXXAA
22	0130L00007	CUT-OUT SWITCH, LOW PRESSURE	M14	-	DSG0360903DHDAAA
32	B1339533	COMPRESSOR GROMMET (QTY 4)	M15	-	DSG0360903DHMUAA
42	M0221641	TF SHOULDER SCREW (QTY 4)	M16	-	DSG0360903DHBAAA
52	B1219225	SINGLE-FLOW FILTER DRIER, STEEL	M17	-	DSG0360903DHXXAA
62	0130M00209	CUT-OUT SWITCH, HIGH PRESSURE	M18	-	DSG0360903DVXDAA
72	0159L00027	COMPRESSOR SCROLL HARNESS (M1, M2, M3, M8, M9, M10, M11, M12, M13)	M19	-	DSG0360903DWDAAA
72	0159L00065	COMPRESSOR SCROLL HARNESS (M4, M5, M6, M7, M14, M15, M16, M17, M18, M19, M20, M21, M22, M23)	M20	-	DSG0360903DXDXAA
82	0121L00310	COMPRESSOR MOUNTING PLATE	M21	-	DSG0360903DXXBAA
252	0121L02619	BASE PAN, INDOOR	M22	-	DSG0360903DXXJAA
262	0121L01990	BASE PAN - OUTDOOR	M23	-	DSG0360903DXXXAA

Cabinet Assembly

IMAGE 1

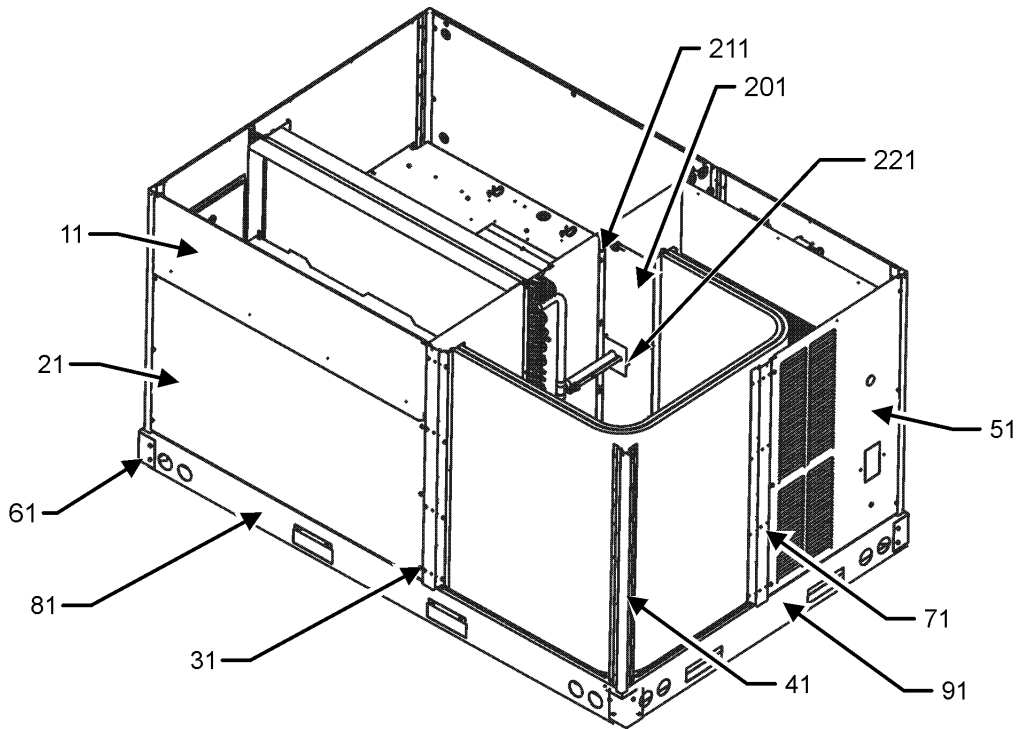
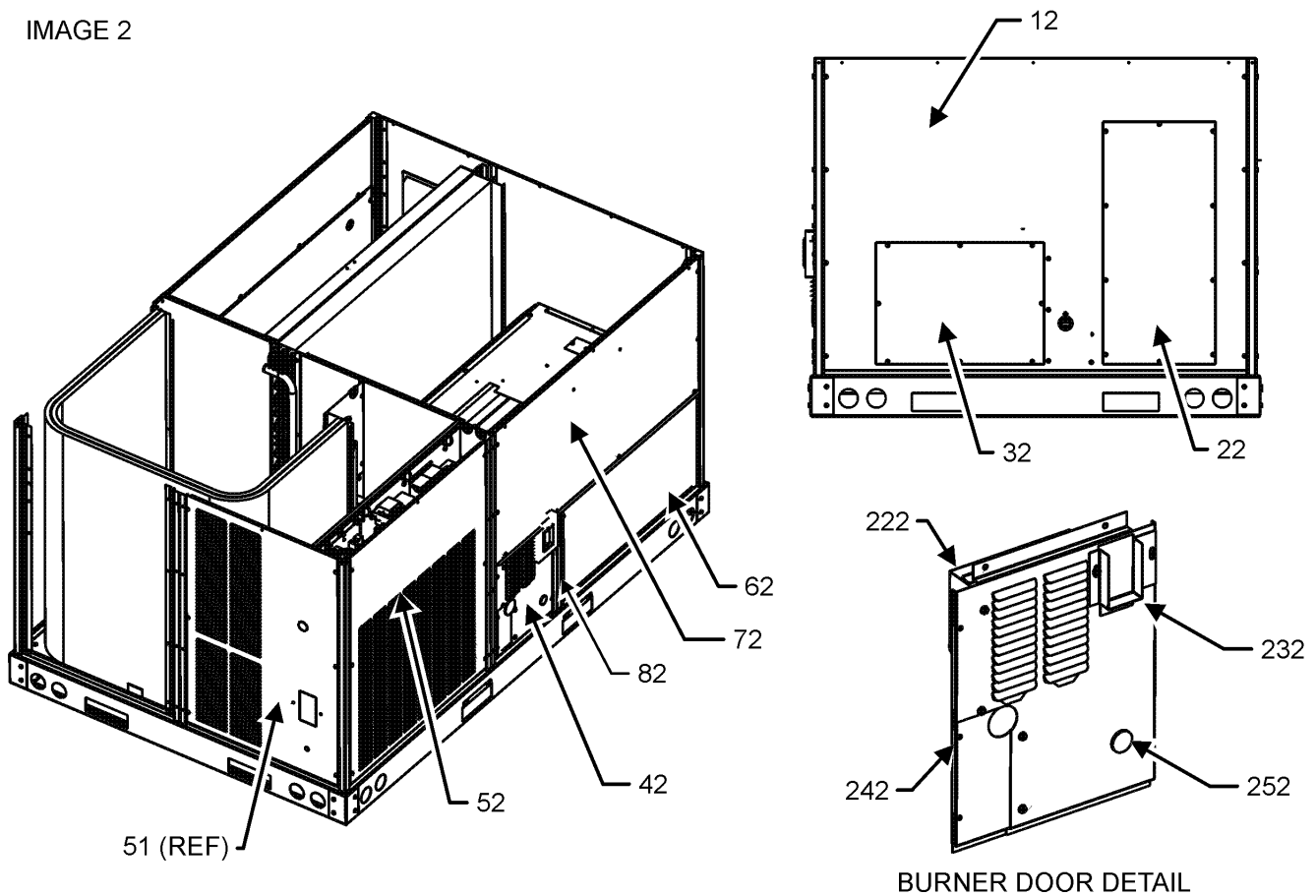


IMAGE 2



Cabinet Assembly

Ref. Part

No: No: Description:

Image 1:

11	0270L00362NG	FILTER DOOR
21	0121L00976NG	ECONOMIZER DOOR (M1, M2, M3, M4, M7, M10, M11, M12, M13, M14, M15, M16, M17, M18, M19, M20, M21, M22, M23)
31	0121L00233RFNG	POST-SIDE SUPPORT (QTY 2)
41	0121L00237RFNG	CORNER POST (M1, M2, M3, M4, M5, M6, M7, M8, M9, M10, M11, M12, M13, M14, M15, M16, M17, M18, M19, M20, M21, M22)
41	0121L02553RFNG	PNT, CORNER POST (M8, M14, M15, M19, M20)
51	0121L00263NG	LOUVERED COMPRESSOR PANEL (M1, M2, M3, M7, M8, M9, M10, M11, M12, M13, M18, M20, M21, M22, M23)
51	0121L00836NG	LOUVERED COMPRESSOR PANEL (M4, M5, M6, M14, M15, M16, M17, M19)
61	0121G00301	RAIL CORNER BRACKET (QTY 4)
71	0121L01159RFNG	POST-SIDE SUPPORT (M1, M2, M3, M4, M5, M6, M7, M9, M10, M11, M12, M13, M16, M17, M18, M21, M22, M23)
71	0121L01374RFNG	POST-SIDE SUPPORT (M8, M14, M15, M19, M20)
81	0121L00244RF	SIDE RAIL (QTY 2)
91	0121L00245	END RAIL
201	0121L00311	COND BLOCK-OFF
211	0121L00254	COND MOUNTING ANGLE
221	0121L00939	CONDENSER BLOCKOFF PLATE
NS	0121L01309	ECONOMIZER COVER (M5, M6, M8, M9)
NS	0121L02655	END RAIL
NS	0164L00009	GASKET-RUBBER, CPOST (QTY 3)
NS	0164L00011	GASKET-RUBBER, SIDE POST (QTY 3)

Image 2:

12	0121L00236NG	DUCT PANEL
22	0121L00023NG	RETURN DUCT COVER
32	0121L00024NG	SUPPLY DUCT COVER
42	0121L01438NG	BURNER DOOR
52	0121L01121NG	CONTROL PANEL W/LOUVERS (M1, M2, M3, M4, M5, M6, M7, M9, M10, M11, M12, M13, M16, M17, M18, M21, M22, M23)
52	0121L02551NG	PNT, CONTROL DOOR (M8, M14, M15, M19, M20)
62	0121L01108NG	HEAT EXCHANGER DOOR
72	0121L01157NG	BLOWER DOOR
82	0121L01110RFNG	POST-BURNER
222	0121L01439	RAIN SHIELD DOOR
232	0121L01440NG	FLUE COLLAR
242	0121L01441NG	BURNER DOOR PANEL
252	B1392139	VIEW PORT BUSHING, CLEAR 1.00
NS	0141L00003X	FORK BOARD (QTY 2)
NS	0121L00055	FORK BOARD BRACKET (QTY 4)
NS	B1910010	GAS LINE GROMMET

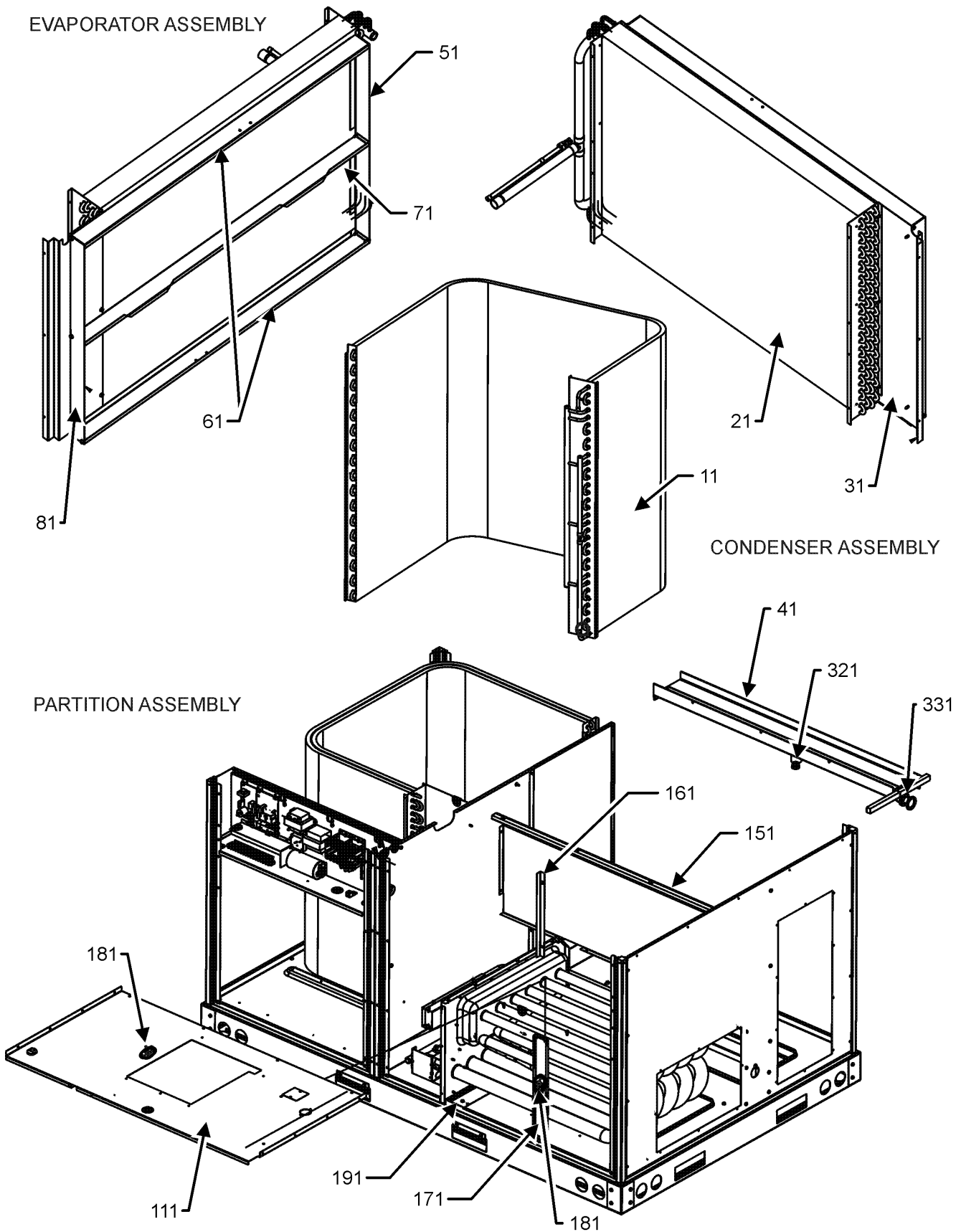
Ref. Part

No: No: Description:

Expanded Model Nomenclature

M1 - DSG0360451DVXBAA
M2 - DSG0360451DXSXAA
M3 - DSG0360451DXXXAA
M4 - DSG0360453DHXXAA
M5 - DSG0360453DJXCAA
M6 - DSG0360453DJXVAA
M7 - DSG0360453DXXXAA
M8 - DSG0360901DADAAA
M9 - DSG0360901DASBAA
M10 - DSG0360901DVXBAA
M11 - DSG0360901DVXXAA
M12 - DSG0360901DXSXAA
M13 - DSG0360901DXXXAA
M14 - DSG0360903DHDAAA
M15 - DSG0360903DHMUAA
M16 - DSG0360903DHBAAA
M17 - DSG0360903DHXXAA
M18 - DSG0360903DVXDAA
M19 - DSG0360903DWDAAA
M20 - DSG0360903DXDXAA
M21 - DSG0360903DXXBAA
M22 - DSG0360903DXXJAA
M23 - DSG0360903DXXXAA

Condenser, Evaporator and Partition Assy

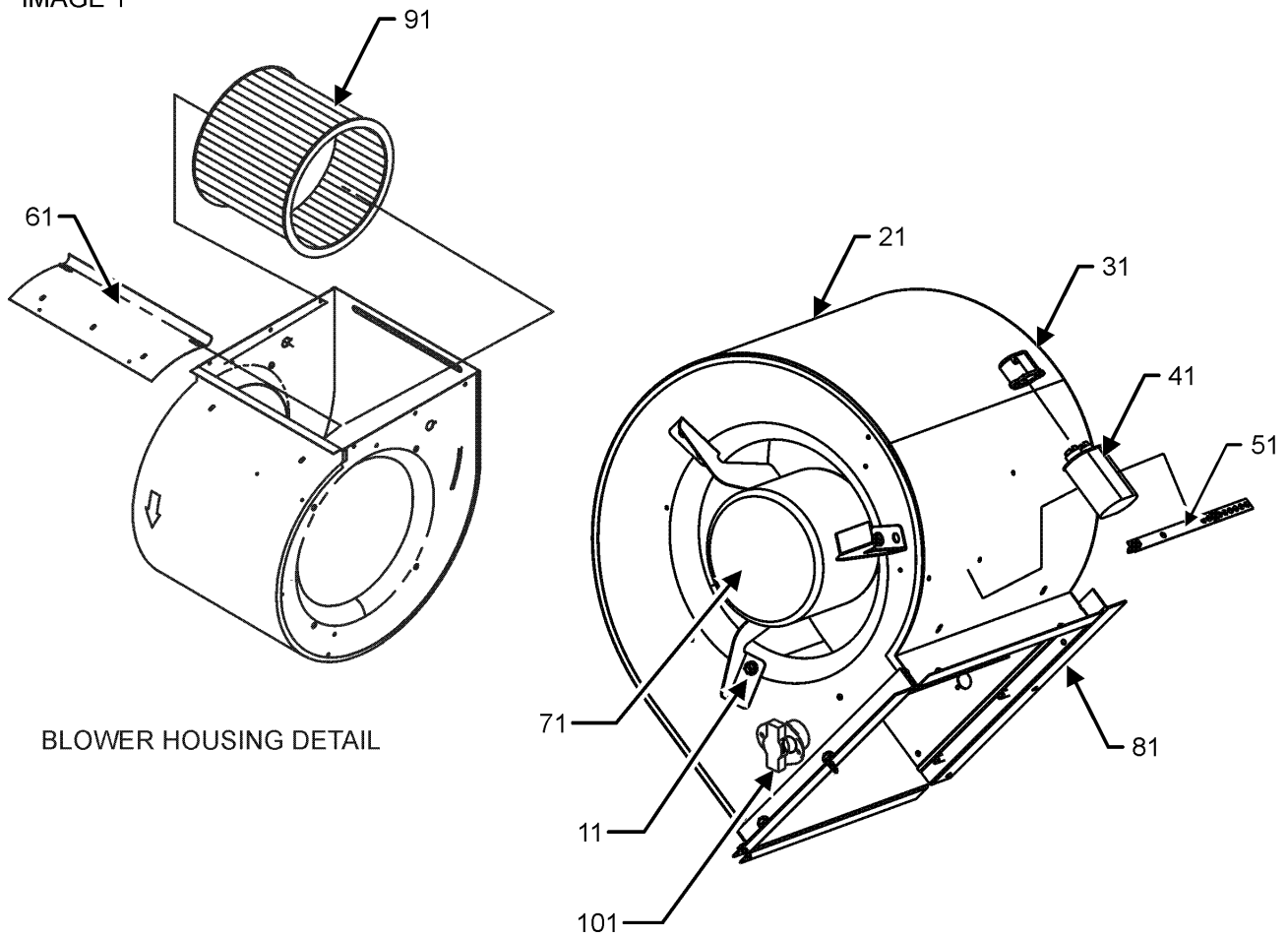


Condenser, Evaporator and Partition Assy

Ref. Part No:	Ref. Part No:	Description:	Description:
Image 1:		Expanded Model Nomenclature	
11	0201L00036	TUBING ASSY, COND COIL	M1 - DSG0360451DVXBAA
21	0202L00154	EVAP COIL TUBING ASSY	M2 - DSG0360451DXSXAA
31	0121L00335	BLOCKOFF-EVAPORATOR (M18)	M3 - DSG0360451DXXXAA
31	0121L00313	EVAP BLOCKOFF (M1, M2, M3, M4, M5, M6, M7, M8, M9, M10, M11, M12, M13, M14, M15, M16, M17, M19, M20, M21, M22, M23)	M4 - DSG0360453DHXXAA
41	0161L00005	DRAIN PAN	M5 - DSG0360453DJXCAA
51	0121L00287	FILTER ANGLE-VERTICAL (RETURN SIDE)	M6 - DSG0360453DJXVAA
61	0121L00932	FILTER ANGLE-HORIZONTAL (QTY 2)	M7 - DSG0360453DXXXAA
71	0121L01255	ANGLE-FILTER CENTER	M8 - DSG0360901DADAAA
81	0121L00303	FILTER ANGLE-VERTICAL (HAIRPIN SIDE)	M9 - DSG0360901DASBAA
111	0121L03396	DECK-BLOWER	M10 - DSG0360901DVXBAA
151	0121L02123	DECK SIDE CHANNEL	M11 - DSG0360901DVXXAA
161	0121L00293	BACK ANGLE-HEAT EXCHANGER (QTY 2)	M12 - DSG0360901DXSXAA
171	0121L00300	SUPPORT POST-DECK	M13 - DSG0360901DXXXAA
181	B1370155	AUXILIARY LIMIT SWITCH 120°F (M14, M15, M16, M17, M18, M19, M20, M21, M22, M23)	M14 - DSG0360903DHDAAA
181	0130F00105	LIMIT SWITCH (M8, M9, M10, M11, M12, M13)	M15 - DSG0360903DHMUAA
181	0130M00063	PRIMARY LIMIT - GOLD 140° (M4, M5, M6, M7)	M16 - DSG0360903DHBAAA
181	0130F00036	PRIMARY LIMIT - PINK (M1, M2, M3)	M17 - DSG0360903DHXXAA
191	0121L00266	HEAT PANEL CHANNEL (QTY 2)	M18 - DSG0360903DVXDAA
321	0163L00071	DRAIN PLUG	M19 - DSG0360903DWDAAA
331	0154L00009	GASKET-DRAIN PAN	M20 - DSG0360903DXDXAA
NS	0160L00173	AIR FILTER 14 X 20 X 2 (QTY 4)	M21 - DSG0360903DXXBAA
NS	0121L01377	BLOWER DECK SUPPORT (M8, M14, M15, M19, M20)	M22 - DSG0360903DXXJAA
NS	0121L00939	CONDENSER BLOCKOFF PLATE	M23 - DSG0360903DXXXAA
NS	0121L00238	DRAIN PAN SUPPORT	
NS	0121L00321	SMOKE DETECTOR COVER	

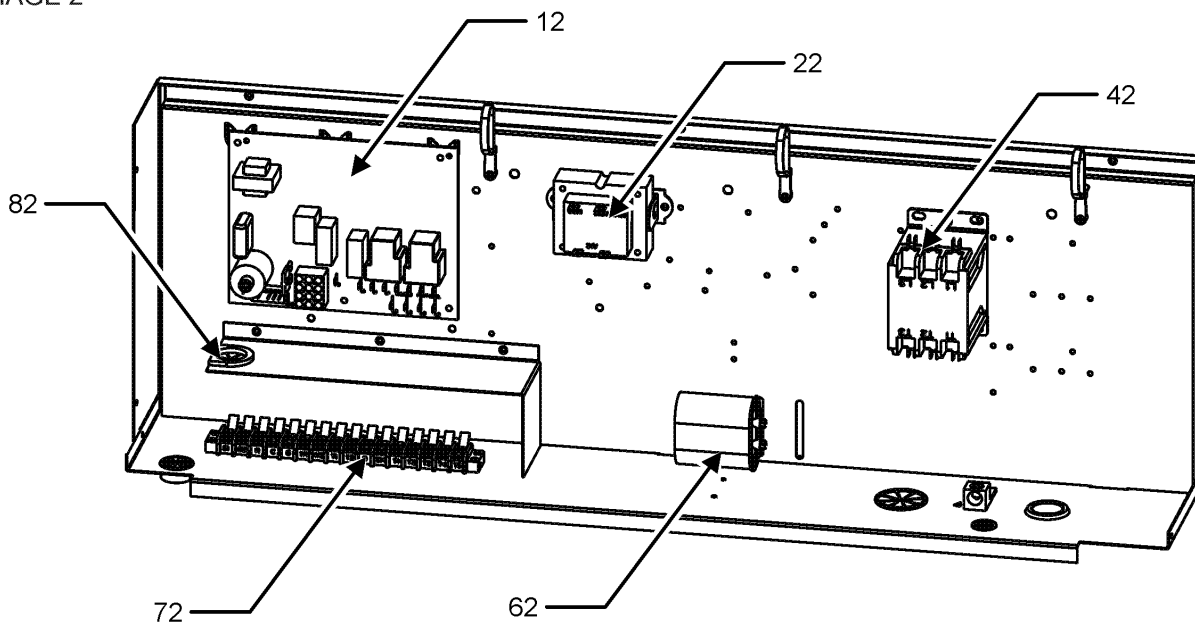
Blower and Control Box Assembly

IMAGE 1



BLOWER HOUSING DETAIL

IMAGE 2



Blower and Control Box Assembly

Ref. Part

No: No: Description:

Image 1:

11	M0250558	TC SCREW (QTY 3)
21	11185817	HSG WELD-BLWR FUR
31	B821700	CAPACITOR BOOT
41	CAP100000370LA	CAP, 10 MFD/370V/OVAL
51	20520901	CAPACITOR STRAP
61	C6121806	BLOWER CUT-OFF
71	0131M00126	BLOWER MOTOR
81	0121L00308	BLOWER MOUNTING ANGLE
91	D6723303	BLOWER WHEEL
101	20269903	AUXILIARY LIMIT, AUTO RESET (M8, M9, M10, M11, M12, M13, M14, M15, M16, M17, M18, M19, M20, M21, M22, M23)
101	0130M00064	LIMIT (M1, M2, M3, M4, M5, M6, M7)

Image 2:

12	PCBAG123	IGNITION BOARD, DSI INTEGRATED
22	0130M00138	TRANSFORMER, 208/230, 24V
42	CONT3P025024V	CONTACTOR 25 AMP, 3P, 24V (M4, M5, M6, M7, M14, M15, M16, M17, M18, M19, M20, M21, M22, M23)
42	CONT1P030024V	CONTACTOR 30 AMP, 1P, 24V (M1, M2, M3, M8, M9, M10, M11, M12, M13)
62	CAP100000440LA	CAP 10 MFD/440V/OVAL (M5, M6, M15)
62	CAP100000370LA	CAP, 10 MFD/370V/OVAL (M4, M7, M14, M16, M17, M18, M19, M20, M21, M22, M23)
62	CAP100450440CS	CAP, 10/45 MFD/ 440V DUAL RD (M1, M2, M3, M8, M9, M10, M11, M12, M13)
72	0130M00038	TERMINAL BOARD
82	0121L00307	VOLTAGE BARRIER
NS	0259L00083	12-PIN GAS HARNESS
NS	0259L00084	CONTROL HARNESS
NS	0259L00179	HARNESS, ECONOMIZER
NS	0259L00079	WIRE HARNESS, EVAP MOTOR
NS	0259L00090	WIRE HARNESS-SMOKE DETECTOR (M6, M15, M18, M22)
NS	0259L00054	WIRING HARNESS
NS	0259L00069	WIRING HARNESS (M8, M9, M10, M11, M12, M13, M14, M15, M16, M17, M18, M19, M20, M21, M22, M23)

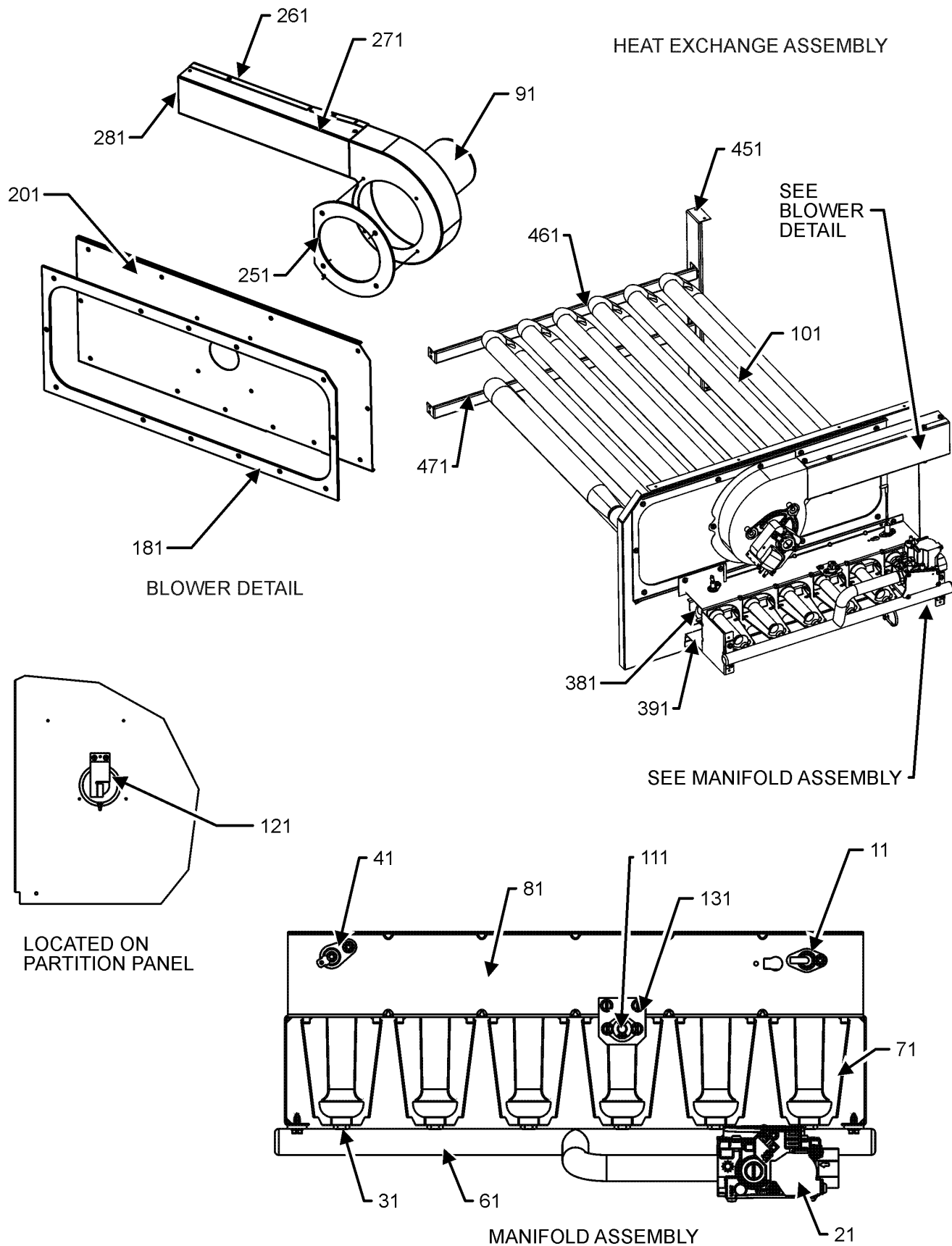
Ref. Part

No: No: Description:

Expanded Model Nomenclature

M1 - DSG0360451DVXBAA
M2 - DSG0360451DXSXAA
M3 - DSG0360451DXXXAA
M4 - DSG0360453DHXXAA
M5 - DSG0360453DJXCAA
M6 - DSG0360453DJXVAA
M7 - DSG0360453DXXXAA
M8 - DSG0360901DADAAA
M9 - DSG0360901DASBAA
M10 - DSG0360901DVXBAA
M11 - DSG0360901DVXXAA
M12 - DSG0360901DXSXAA
M13 - DSG0360901DXXXAA
M14 - DSG0360903DHDAAA
M15 - DSG0360903DHMUAA
M16 - DSG0360903DHBAAA
M17 - DSG0360903DHXXAA
M18 - DSG0360903DVXDAA
M19 - DSG0360903DWDAAA
M20 - DSG0360903DXXDAA
M21 - DSG0360903DXXBAA
M22 - DSG0360903DXXJAA
M23 - DSG0360903DXXXAA

Heat Exchanger Assembly



Heat Exchanger Assembly

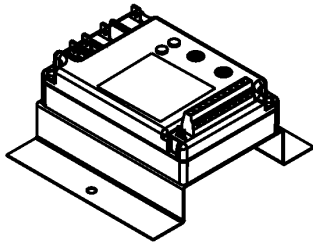
Ref. Part No:	Ref. Part No:	Description:	Description:
Image 1:		Expanded Model Nomenclature	
11	20261709	IGNITOR	M1 - DSG0360451DVXBAA
21	0151F00000P	GAS VALVE - WHITE-RODGERS 2-STAGE (M8, M9, M10, M11, M12, M13, M14, M15, M16, M17, M18, M19, M20, M21, M22, M23)	M2 - DSG0360451DXSXAA
21	0151M00013	VALVE, GAS (HW) SINGLE STAGE (M1, M2, M3, M4, M5, M6, M7)	M3 - DSG0360451DXXXAA
31	0163F00018	ORIFICE (QTY 2)	M4 - DSG0360453DHXXAA
41	0130F00010	FLAME SENSOR	M5 - DSG0360453DJXCAA
61	0163L00027	MANIFOLD-GAS 2 BURNER (M1, M2, M3, M4, M5, M6, M7)	M6 - DSG0360453DJXVAA
61	0163L00026	MANIFOLD-GAS 4 BURNER (M8, M9, M10, M11, M12, M13, M14, M15, M16, M17, M18, M19, M20, M21, M22, M23)	M7 - DSG0360453DXXXAA
71	0163F00017	BECKETT BURNER (M1, M2, M3, M8, M9, M10, M11, M12, M13)	M8 - DSG0360901DADAAA
71	10735102	BECKETT BURNER (M4, M5, M6, M7, M14, M15, M16, M17, M18, M19, M20, M21, M22, M23)	M9 - DSG0360901DASBAA
81	0121L01360	BRACKET, BURNER 2 (M1, M2, M3)	M10 - DSG0360901DVXBAA
81	0121L01361	BRACKET, BURNER 4 (M8, M9, M10, M11, M12, M13)	M11 - DSG0360901DVXXAA
81	20190410	BURNER BRACKET 2B (M4, M5, M6, M7)	M12 - DSG0360901DXSXAA
81	20190412	BURNER BRACKET 4B (M14, M15, M16, M17, M18, M19, M20, M21, M22, M23)	M13 - DSG0360901DXXXAA
91	0131M00121	BLOWER-ID COMBUSTION	M14 - DSG0360903DHDAAA
101	0270L00681	PART/TUBE ASSY (M1, M3)	M15 - DSG0360903DHMUAA
101	0270L00682	PART/TUBE ASSY (M8, M10, M11, M13)	M16 - DSG0360903DHXBAA
101	0270L00685	PART/TUBE ASSY (M2)	M17 - DSG0360903DHXXAA
101	0270L00686	PART/TUBE ASSY (M9, M12)	M18 - DSG0360903DVXDA A
101	0270L00099	PART/TUBE ASSY 2B (M4, M5, M6, M7)	M19 - DSG0360903DWDAAA
101	0270L00092	PART/TUBE ASSY 4B (M14, M15, M16, M17, M18, M19, M20, M21, M22, M23)	M20 - DSG0360903DXDXAA
111	10123532	LIMIT-RESET MAN-GRAY	M21 - DSG0360903DXXBAA
121	11112501	PRESSURE SWITCH	M22 - DSG0360903DXXJAA
131	0121L00053	BRACKET-FLAME ROLLOUT	M23 - DSG0360903DXXXAA
181	0154L00018	GASKET- ID BLOWER PLATE 2,4	
201	0121L00285	ID BLOWER PLATE 2 BRNR (M4, M5, M6, M7)	
201	0121L00284	ID BLOWER PLATE 4 BRNR (M14, M15, M16, M17, M18, M19, M20, M21, M22, M23)	
201	0121L01353	PLATE, ID BLOWER 4 (M8, M9, M10, M11, M12, M13)	
201	0121L01329	PLATE-ID BLOWER 2 (M1, M2, M3)	
251	0154L00020	GASKET-ID BLOWER	
261	0121L00277	FLUE-CHANNEL	
271	0121L00278	FLUE-SIDE COVER	
281	0163L00072	SCREEEN-FLUE	
381	11072201	ORIFICE SHIELD (M4, M5, M6, M7)	
381	11072203	ORIFICE SHIELD (M14, M15, M16, M17, M18, M19, M20, M21, M22, M23)	
391	0121L00267	BRACKET-BURNER SLIDE (M4, M5, M6, M7, M14, M15, M16, M17, M18, M19, M20, M21, M22, M23)	
451	0121L02618	SUPPORT BRACKET	
461	0121L01576	SUPPORT BRACKET	
471	0121L02617	SUPPORT BRACKET	
NS	A3468601	PRESSURE SWITCH HOSE	

Accessory Parts List

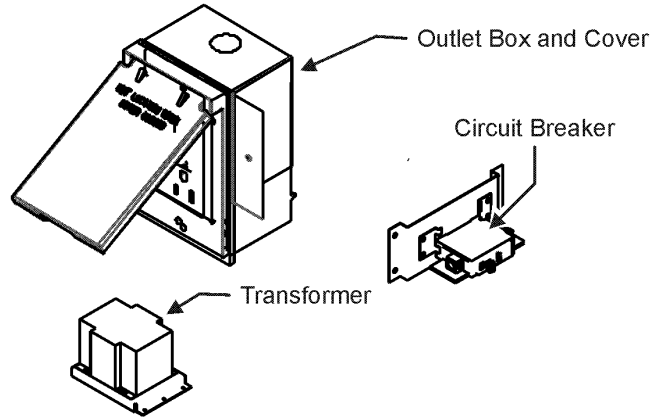
ACCESSORY PARTS LIST

NOTE: NOT ALL OPTIONS AVAILABLE FOR ALL PRODUCTS

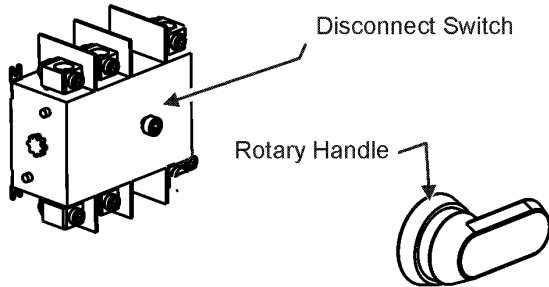
1 LOW AMBIENT KITS



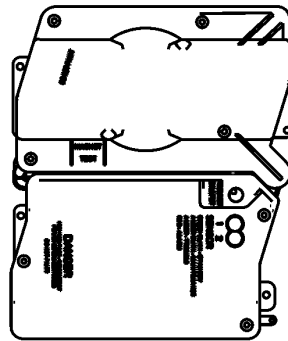
2 GFCI CONVENIENCE OUTLET



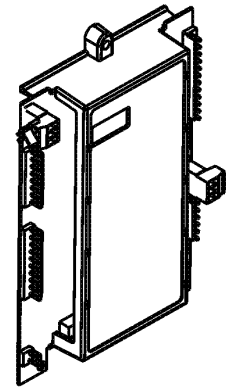
3 DISCONNECT MODULE (NON-FUSED)



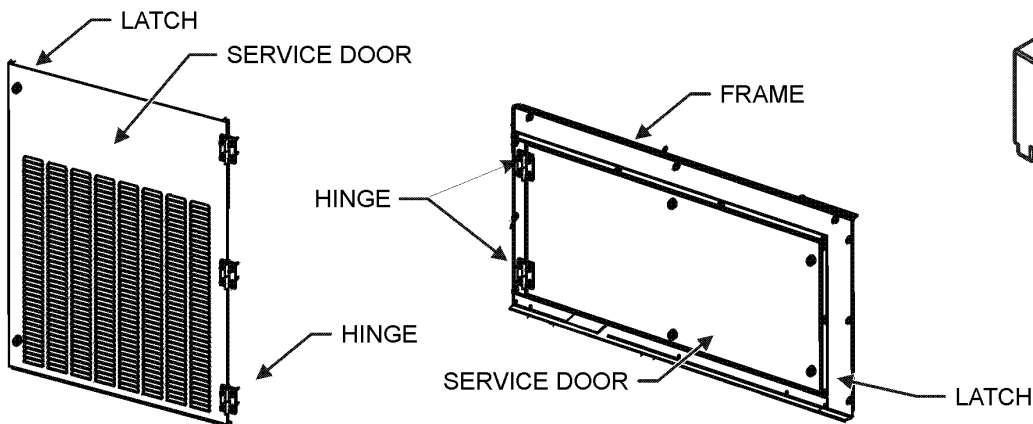
4 SMOKE DETECTORS



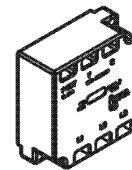
5 DDC CONTROL



6 HINGED DOOR ASSEMBLIES



7 PHASE MONITOR



Accessory Parts List

Ref. Part No:	Ref. Part No:	Description:	Description:
Image 1:		Expanded Model Nomenclature	
NS 1036609C		3-6 TON DFLOW ECONOMIZER (M5, M6, M8, M9)	M1 - DSG0360451DVXBAA
NS DDNECNJ3672C		3-6 TON DFLOW ECONOMIZER (M1, M10, M11, M18, M19)	M2 - DSG0360451DXSXAA
NS 0121L01934		BRACKET SMOKE DETECTOR (M6, M15, M18, M22)	M3 - DSG0360451DXXXAA
NS 0121L00316		BRACKET-CONV OUTLET MOUNT (M1, M8, M9, M10, M14, M15, M16, M19, M21, M22)	M4 - DSG0360453DHXXAA
NS 0121L00835		BRACKET-DISCONNECT SWITCH (M4, M5, M6, M14, M15, M16, M17, M19)	M5 - DSG0360453DJXCAA
NS 0130M00065		CIRCUIT BREAKER, CONVENIENCE OUTLET (M1, M9, M10, M16, M21)	M6 - DSG0360453DJXVAA
NS 0121L00837NG		DISCONNECT COVER (M4, M5, M6, M14, M15, M16, M17, M19)	M7 - DSG0360453DXXXAA
NS 0130L00012		GANG BOX-GFCI OUTLET (M1, M8, M9, M10, M14, M15, M16, M19, M21, M22)	M8 - DSG0360901DADAAA
NS 0130L00039		HANDLE, ROTARY (M4, M5, M6, M14, M15, M16, M17, M19)	M9 - DSG0360901DASBAA
NS 0163M00307		HINGE, LEFT HAND (M8, M14, M15, M19, M20)	M10 - DSG0360901DVXBAA
NS 0163M00308		HINGE, RIGHT HAND (M8, M14, M15, M19, M20)	M11 - DSG0360901DVXXAA
NS 0163M00360		LATCH (M8, M14, M15, M19, M20)	M12 - DSG0360901DXSXAA
NS 0130M00058		LOW AMBIENT KIT (M5, M6, M15)	M13 - DSG0360901DXXXAA
NS 0121L02509NG		PNT, BLOWER FRAME (M8, M14, M15, M19, M20)	M14 - DSG0360903DHDAAA
NS 0161G00012		POWER OUTLET BOX (M1, M8, M9, M10, M14, M15, M16, M19, M21, M22)	M15 - DSG0360903DHMUAA
NS 0130L00103		RECEPTACLE-GFCI OUTLET (M1, M8, M9, M10, M14, M15, M16, M19, M21, M22)	M16 - DSG0360903DHXBAA
NS 0121L02527NG		SERVICE DOOR BACK , BLOWER (M8, M14, M15, M19, M20)	M17 - DSG0360903DHXXAA
NS 0121L02526NG		SERVICE DOOR FRONT, BLOWER (M8, M14, M15, M19, M20)	M18 - DSG0360903DVXDA A
NS 0130L00042		SHAFT, CUT (M4, M5, M6, M14, M15, M16, M17, M19)	M19 - DSG0360903DWDAA A
NS 0130L00049		SHAFT, DISCONNECT (M4, M5, M6, M14, M15, M16, M17, M19)	M20 - DSG0360903DXDXAA
NS D4120		SMOKE DETECTOR, PHOTO 4WIRE (M6, M15, M18, M22)	M21 - DSG0360903DXXBAA
NS D4S		SMOKE DETECTOR, SENSOR ONLY (M22)	M22 - DSG0360903DXXJAA
NS 0130L00046		SWITCH-DISCONNECT 60A (M4, M5, M6, M14, M15, M16, M17, M19)	M23 - DSG0360903DXXXAA
NS 0130M00061		TRANSFORMER, CONVENIENCE OUTLET (M1, M9, M10, M16, M21)	