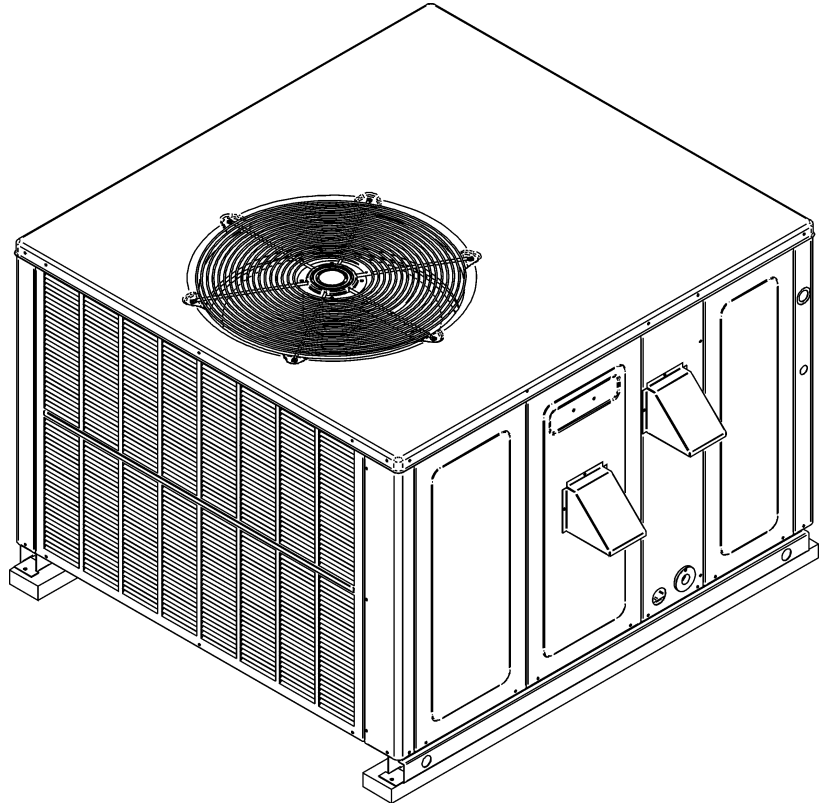


## DP14GM "M" Series Residential Package Gas Unit

DP14GM2404041AA  
DP14GM2404041AB  
DP14GM2406041AA  
DP14GM2406041AB  
DP14GM3004041AA  
DP14GM3004041AB  
DP14GM3006041AA  
DP14GM3006041AB  
DP14GM3604041AA  
DP14GM3604041AB  
DP14GM3606041AA  
DP14GM3606041AB  
DP14GM3608041AA  
DP14GM3608041AB  
DP14GM4206041AA  
DP14GM4206041AB  
DP14GM4208041AA  
DP14GM4208041AB  
DP14GM4806041AA  
DP14GM4806041AB  
DP14GM4808041AA  
DP14GM4808041AB  
DP14GM4810041AA  
DP14GM4810041AB  
DP14GM6008041AA  
DP14GM6010041AA  
DP14GM6012041AA  
DP14GM6108041AA  
DP14GM6110041AA  
DP14GM6112041AA



This manual is to be used by qualified technicians only.

This manual replaces RP-D3014.

# Important Information

---

## Index

Functional Parts List .....	3
Illustration and Parts .....	4 - 15

*Views shown are for parts illustrations only, not servicing procedures*

Rev A: 5 ton compressor and gas valve changes

### Text Codes:

AR - As Required

NA - Not Available

NS - Not Shown

00000000 - See Note

QTY - Quantity Example (QTY 3) (If Quantity not shown, Quantity = 1)

M - Model Example (M1) (If M Code not shown, then part is used on all Models)

### Expanded Model Nomenclature:

Example M1 - Model#1 M2 - Model#2 M3 - Model#3
---

Daikin Company, L.P. is not responsible for personal injury or property damage resulting from improper service. Review all service information before beginning repairs.

Warranty service must be performed by an authorized technician, using authorized factory parts. If service is required after the warranty expires, Daikin Company, L.P. also recommends contacting an authorized technician and using authorized factory parts.

Daikin Company, L.P. reserves the right to discontinue, or change at any time, specifications or designs without notice or without incurring obligations.

For assistance within the U.S.A. contact:

Consumer Affairs Department  
Daikin North America, LLC  
7401 Security Way  
Houston, Texas 77040  
855-770-5678-Telephone  
713-863-2382-Facsimile

For assistance outside the U.S.A. contact:

International Division  
Daikin North America, LLC  
7401 Security Way  
Houston, Texas 77040  
713-861-2500-Telephone  
713-863-2382-Facsimile

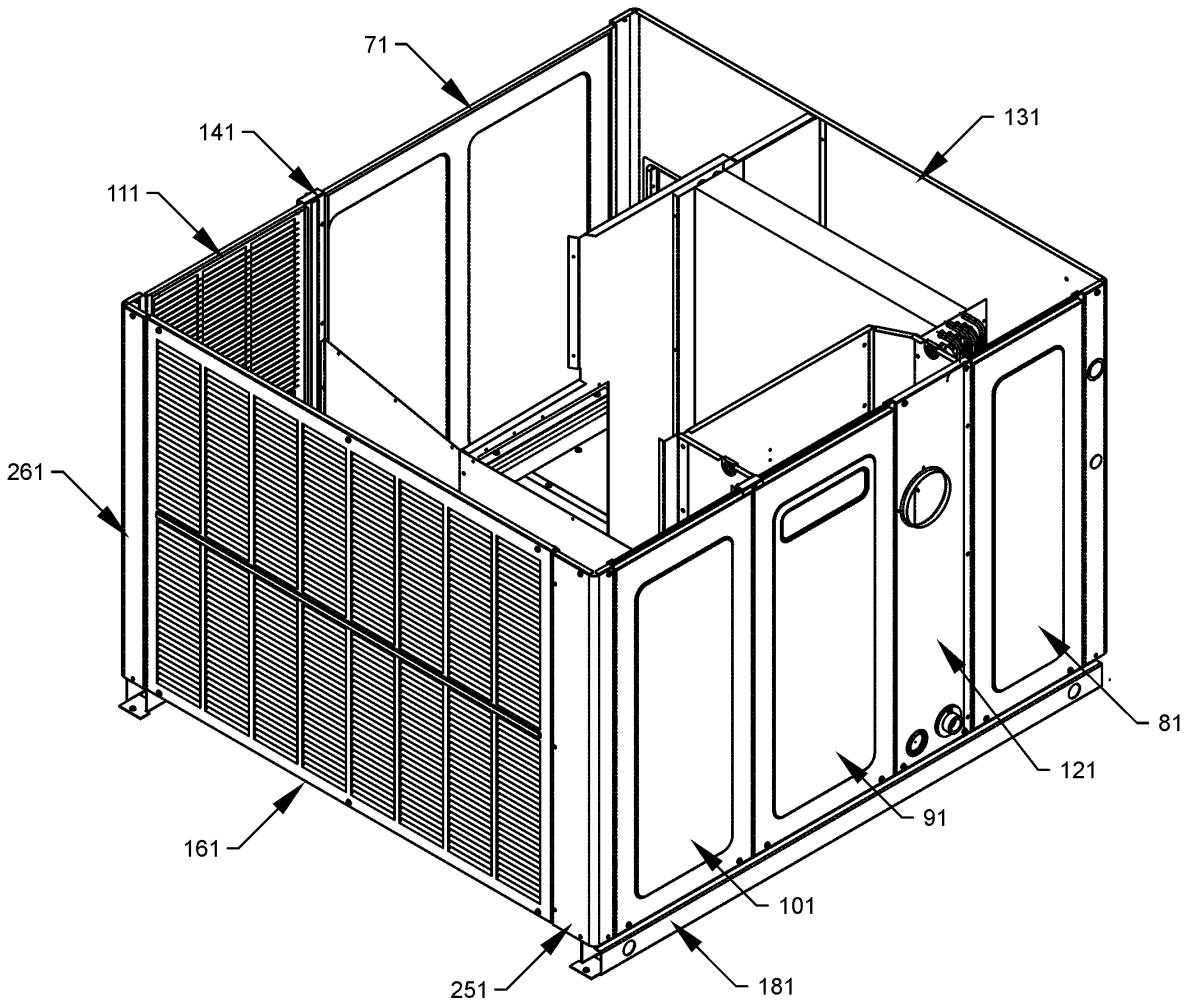
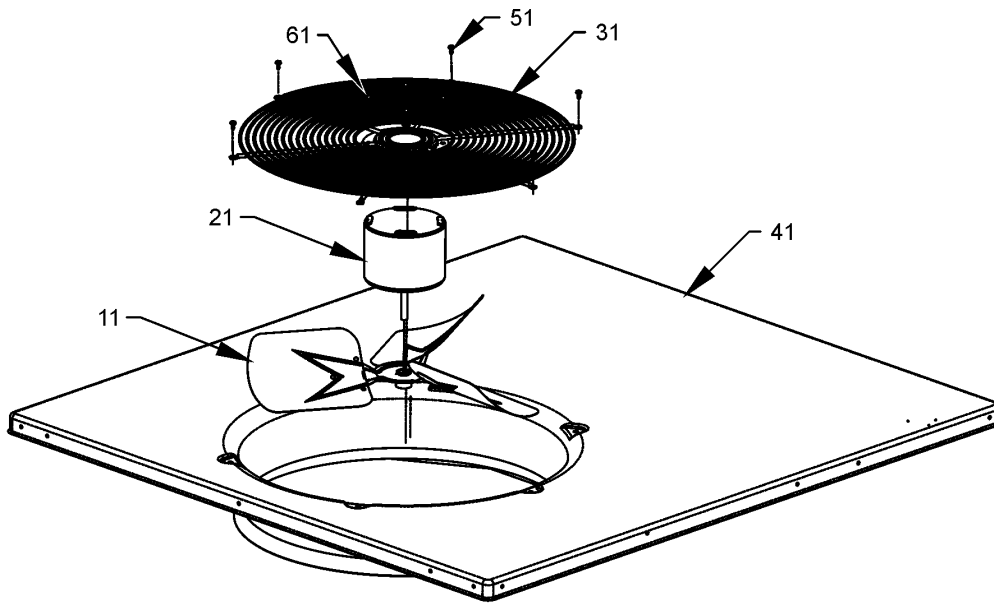
# Functional Parts

## Part

## No: Description:

Part No:	Description:	Part No:	Description:
B1370751	24V RELAY (M1, M2, M3, M4, M5, M6, M7, M8, M9, M10, M11, M12, M13, M14, M15, M16, M17, M18, M19, M20, M21, M22, M23, M24)	10728344	LIMIT SWITCH (M19, M20, M21, M22, M23, M24)
0163F00017	BECKETT BURNER (QTY A/R)	10728343	LIMIT SWITCH (M25, M26, M27, M28, M29, M30)
D6723303	BLOWER WHEEL (M9, M10, M11, M12, M13, M14, M15, M16, M17, M18)	10728342	LIMIT SWITCH (M1, M2, M3, M4, M5, M6, M7, M8, M9, M10, M11, M12, M13, M14, M15, M16, M17, M18)
B1368016	BLOWER WHEEL 10 X 8 (M1, M2, M3, M4, M5, M6, M7, M8)	10123532	MANUAL RESET LIMIT 350°F (M1, M2, M3, M4, M5, M6, M7, M8, M9, M10, M11, M12, M13, M14, M15, M16, M17, M18, M19, M20, M21, M22, M23, M24)
B1368000	BLOWER WHEEL 11 X 10 (M19, M20, M21, M22, M23, M24, M25, M26, M27, M28, M29, M30)	10123529	MANUAL RESET LIMIT-GREEN (M25, M26, M27, M28, M29, M30)
CAP100400440CT	CAP, 10/40 MFD, 440V/ DUAL RD (M28, M29, M30)	11112501	PRESSURE SWITCH
CAP050350440CS	CAPACITOR 5/35/440V (M1, M2, M3, M4)	0131G00012	PROGRAMMED MOTOR (M9, M10, M11, M12, M13, M14)
CAP050400440CT	CAPACITOR 5/40/440V/DUAL RD (M5, M6, M7, M8, M25, M26, M27)	0131G00053	PROGRAMMED MOTOR (M26, M29)
CAP050450440CT	CAPACITOR 5/45/440V/DUAL RD (M9, M10, M11, M12, M13, M14, M15, M16, M17, M18, M19, M20, M21, M22, M23, M24)	0131G00054	PROGRAMMED MOTOR (M27, M30)
ZPS51K5EPFV130	COMP, 51900/208/230/60/1 (M25, M26, M27)	0131G00011	PROGRAMMED MOTOR (M5, M6, M7, M8)
ZP29K5EPFV130	COMP,29000,208/230/60/1 (M9, M10, M11, M12, M13, M14)	0131G00013	PROGRAMMED MOTOR (M15, M16, M17, M18)
ZP20K5EPFV130	COMPRESSOR 20000, 208/230/60/1 (M1, M2, M3, M4)	0131G00014	PROGRAMMED MOTOR (M19, M20, M21, M22, M23, M24)
ZP25K5EPFV130	COMPRESSOR 25200, 208/230/60/1 (M5, M6, M7, M8)	0131G00015	PROGRAMMED MOTOR (M25, M28)
ZP34K5EPFV130	COMPRESSOR 34500, 208/230/60/1 (M15, M16, M17, M18)	0131G00010	PROGRAMMED MOTOR (M1, M2, M3, M4)
ZP39K5EPFV130	COMPRESSOR 39000, 208/230/60/1 (M19, M20, M21, M22, M23, M24)	0130M00138	TRANSFORMER 208/230, 24V
ZPS49K5EPFV130	COMPRESSOR 49100, 208/230/60/1 (M28, M29, M30)	0151M00047	VALVE, NXT (M25, M26, M27, M28, M29, M30)
0131M00430	COND MOTOR 1/3 HP, 1 SP, 6 PL (M28, M29, M30)	<b>Expanded Model Nomenclature</b>	
0131M00061	COND MOTOR 1/4 HP, 1 SP, 8 PL (M9, M10, M11, M12, M13, M14)	M1 - DP14GM2404041AA	
0131M00429	COND MOTOR 1/4 HP, 1 SP, 6 PL (M5, M6, M7, M8, M15, M16, M17, M18, M19, M20, M21, M22, M23, M24, M25, M26, M27)	M2 - DP14GM2404041AB	
0131M00009P	COND MOTOR 1/6 HP, 1 SP, 8 PL (M1, M2, M3, M4)	M3 - DP14GM2406041AA	
CONT1P025024V	CONTACTOR 25 AMP, 1P, 24V (M1, M2, M3, M4, M5, M6, M7, M8, M9, M10, M11, M12, M13, M14)	M4 - DP14GM2406041AB	
CONT1P030024V	CONTACTOR 30 AMP, 1P, 24V (M15, M16, M17, M18, M19, M20, M21, M22, M23, M24)	M5 - DP14GM3004041AA	
CONT2P040024V	CONTACTOR 40 AMP, 2P, 24V (M25, M26, M27, M28, M29, M30)	M6 - DP14GM3004041AB	
0130M00074	CUT-OUT SWITCH, HIGH PRESSURE (M1, M2, M3, M4, M5, M6, M7, M8, M9, M10, M11, M12, M13, M14, M15, M16, M17, M18, M19, M20, M21, M22, M23, M24, M25, M26, M27)	M7 - DP14GM3006041AA	
0130M00087	CUT-OUT SWITCH, LOW PRESSURE (M25, M26, M27, M28, M29, M30)	M8 - DP14GM3006041AB	
B1086775	FAN BLADE (M5, M6, M7, M8)	M9 - DP14GM3604041AA	
B1086773	FAN BLADE 22" (M1, M2, M3, M4)	M10 - DP14GM3604041AB	
0150G00002	FAN BLADE SWEPT-WING (M9, M10, M11, M12, M13, M14)	M11 - DP14GM3606041AA	
0150G00003	FAN BLADE SWEPT-WING (M15, M16, M17, M18, M19, M20, M21, M22, M23, M24, M25, M26, M27, M28, M29, M30)	M12 - DP14GM3606041AB	
0130F00010	FLAME SENSOR	M13 - DP14GM3608041AA	
0151F00000P	GAS VALVE - WHITE-RODGERS 2-STAGE (M25, M26, M27, M28, M29, M30)	M14 - DP14GM3608041AB	
B1282628	GAS VALVE (36G) (M2, M4, M6, M8, M10, M12, M14, M16, M18, M20, M22, M24)	M15 - DP14GM4206041AA	
0151M00013	GAS VALVE (HW) SINGLE STAGE (M1, M3, M5, M7, M9, M11, M13, M15, M17, M19, M21, M23)	M16 - DP14GM4206041AB	
0131G00000P	ID BLOWER (M1, M2, M3, M4, M5, M6, M7, M8, M9, M10, M11, M12, M13, M14, M15, M16, M17, M18, M19, M20, M21, M22, M23, M24)	M17 - DP14GM4208041AA	
0131G00001	ID BLOWER (M25, M26, M27, M28, M29, M30)	M18 - DP14GM4208041AB	
PCBAG123	IGNITION BOARD, DSI INTEGRATED (M1, M2, M3, M4, M5, M6, M7, M8, M9, M10, M11, M12, M13, M14, M15, M16, M17, M18, M19, M20, M21, M22, M23, M24)	M19 - DP14GM4806041AA	
PCBAG127	IGNITION BOARD, DSI, 2 STG (M25, M26, M27, M28, M29, M30)	M20 - DP14GM4806041AB	
0130F00014	IGNITOR	M21 - DP14GM4808041AA	
		M22 - DP14GM4808041AB	
		M23 - DP14GM4810041AA	
		M24 - DP14GM4810041AB	
		M25 - DP14GM6008041AA	
		M26 - DP14GM6010041AA	
		M27 - DP14GM6012041AA	
		M28 - DP14GM6108041AA	
		M29 - DP14GM6110041AA	
		M30 - DP14GM6112041AA	

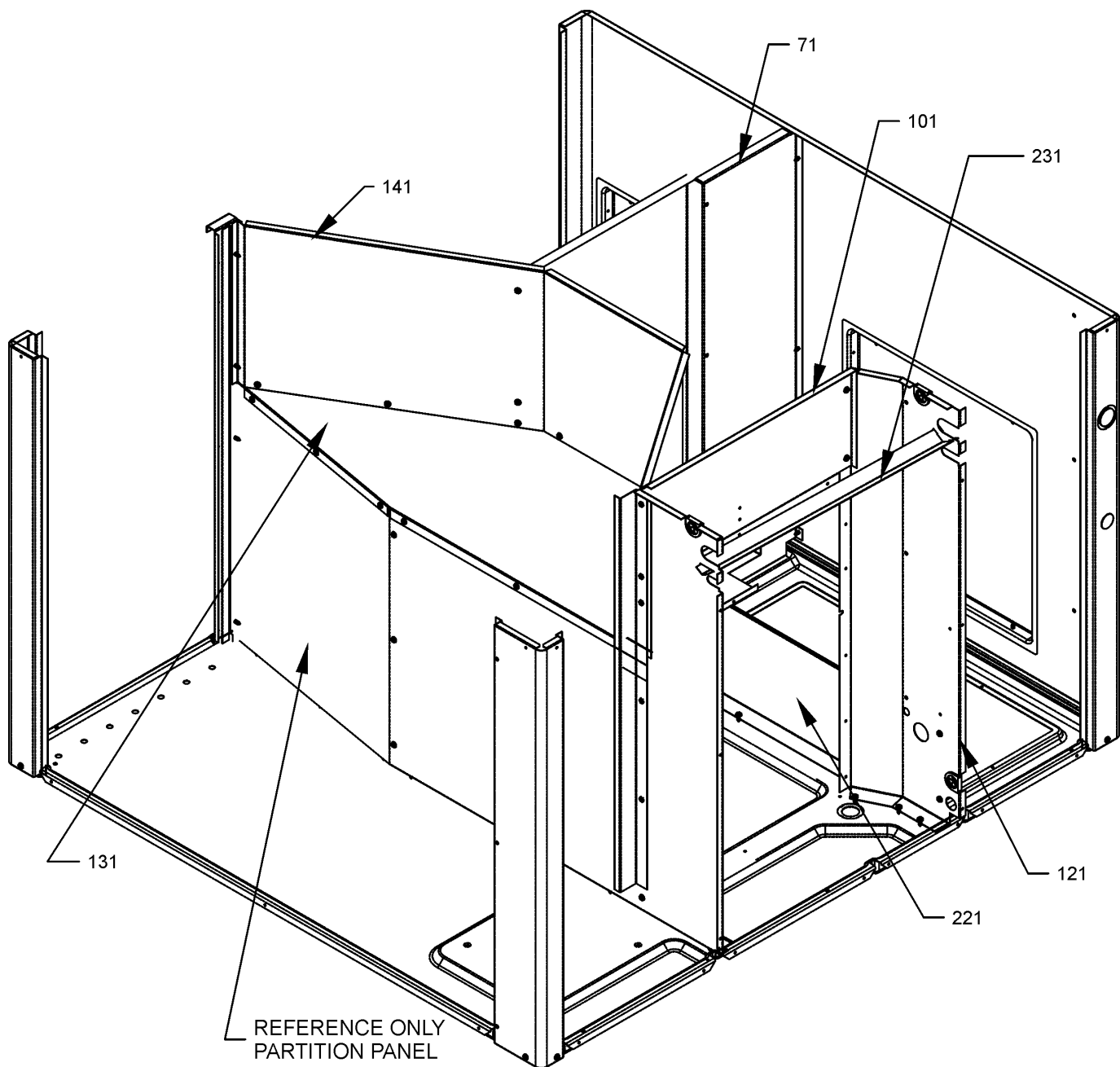
# Top Panel / Fan / Cabinet



# Top Panel / Fan / Cabinet

Ref. Part No: No:	Description:	Ref. Part No: No:	Description:																														
<b>Image 1:</b>		<b>Image 1:</b>																															
11	B1086775 FAN BLADE (M5, M6, M7, M8)	251	20464202NG CORNER POST-COMP END 40" (M19, M20, M21, M22, M23, M24)																														
11	B1086773 FAN BLADE 22" (M1, M2, M3, M4)	251	0121G00453NG CORNER-POST COMP END, PNT (M9, M10, M11, M12, M13, M14, M15, M16, M17, M18)																														
11	0150G00002 FAN BLADE SWEPT-WING (M9, M10, M11, M12, M13, M14)	251	0121G00455NG CORNER-POST COMP END, PNT (M25, M26, M27, M28, M29, M30)																														
11	0150G00003 FAN BLADE SWEPT-WING (M15, M16, M17, M18, M19, M20, M21, M22, M23, M24, M25, M26, M27, M28, M29, M30)	261	0121G00454NG CORNER-POST HPIN END, PNT (M1, M2, M3, M4, M5, M6, M7, M8, M9, M10, M11, M12, M13, M14, M15, M16, M17, M18)																														
21	0131M00430 COND MOTOR 1/3 HP, 1 SP, 6 PL (M28, M29, M30)	261	0121G00456NG CORNER-POST HPIN END, PNT (M19, M20, M21, M22, M23, M24, M25, M26, M27, M28, M29, M30)																														
21	0131M00061 COND MOTOR 1/4 HP, 1 SP, 8 PL (M9, M10, M11, M12, M13, M14)	NS	0121G00323 FLUE HOOD (QTY 2)																														
21	0131M00429 COND MOTOR 1/4 HP, 1 SP, 6 PL (M5, M6, M7, M8, M15, M16, M17, M18, M19, M20, M21, M22, M23, M24, M25, M26, M27)	NS	0121G00190 FLUE HOOD-LOWER																														
21	0131M00009P COND MOTOR 1/6 HP, 1 SP, 8 PL (M1, M2, M3, M4, M5, M6, M7, M8, M9, M10, M11, M12, M13, M14, M15, M16, M17, M18)	NS	B1910012 GAS LINE GROMMET																														
31	0152G00003 FAN GRILLE	NS	1778800083F PVC CONDUIT 8.25"																														
41	0121G00156NG TOP PANEL	NS	20472601 SCREEN-FLUE HOOD																														
51	M0221817 SMALL SCREW (QTY 6)	<b>Expanded Model Nomenclature</b>																															
61	0163M00006P ACORN NUT 5/16 HEX BLACK (QTY 4)	<table border="1"> <tr><td>M1 - DP14GM2404041AA</td></tr> <tr><td>M2 - DP14GM2404041AB</td></tr> <tr><td>M3 - DP14GM2406041AA</td></tr> <tr><td>M4 - DP14GM2406041AB</td></tr> <tr><td>M5 - DP14GM3004041AA</td></tr> <tr><td>M6 - DP14GM3004041AB</td></tr> <tr><td>M7 - DP14GM3006041AA</td></tr> <tr><td>M8 - DP14GM3006041AB</td></tr> <tr><td>M9 - DP14GM3604041AA</td></tr> <tr><td>M10 - DP14GM3604041AB</td></tr> <tr><td>M11 - DP14GM3606041AA</td></tr> <tr><td>M12 - DP14GM3606041AB</td></tr> <tr><td>M13 - DP14GM3608041AA</td></tr> <tr><td>M14 - DP14GM3608041AB</td></tr> <tr><td>M15 - DP14GM4206041AA</td></tr> <tr><td>M16 - DP14GM4206041AB</td></tr> <tr><td>M17 - DP14GM4208041AA</td></tr> <tr><td>M18 - DP14GM4208041AB</td></tr> <tr><td>M19 - DP14GM4806041AA</td></tr> <tr><td>M20 - DP14GM4806041AB</td></tr> <tr><td>M21 - DP14GM4808041AA</td></tr> <tr><td>M22 - DP14GM4808041AB</td></tr> <tr><td>M23 - DP14GM4810041AA</td></tr> <tr><td>M24 - DP14GM4810041AB</td></tr> <tr><td>M25 - DP14GM6008041AA</td></tr> <tr><td>M26 - DP14GM6010041AA</td></tr> <tr><td>M27 - DP14GM6012041AA</td></tr> <tr><td>M28 - DP14GM6108041AA</td></tr> <tr><td>M29 - DP14GM6110041AA</td></tr> <tr><td>M30 - DP14GM6112041AA</td></tr> </table>		M1 - DP14GM2404041AA	M2 - DP14GM2404041AB	M3 - DP14GM2406041AA	M4 - DP14GM2406041AB	M5 - DP14GM3004041AA	M6 - DP14GM3004041AB	M7 - DP14GM3006041AA	M8 - DP14GM3006041AB	M9 - DP14GM3604041AA	M10 - DP14GM3604041AB	M11 - DP14GM3606041AA	M12 - DP14GM3606041AB	M13 - DP14GM3608041AA	M14 - DP14GM3608041AB	M15 - DP14GM4206041AA	M16 - DP14GM4206041AB	M17 - DP14GM4208041AA	M18 - DP14GM4208041AB	M19 - DP14GM4806041AA	M20 - DP14GM4806041AB	M21 - DP14GM4808041AA	M22 - DP14GM4808041AB	M23 - DP14GM4810041AA	M24 - DP14GM4810041AB	M25 - DP14GM6008041AA	M26 - DP14GM6010041AA	M27 - DP14GM6012041AA	M28 - DP14GM6108041AA	M29 - DP14GM6110041AA	M30 - DP14GM6112041AA
M1 - DP14GM2404041AA																																	
M2 - DP14GM2404041AB																																	
M3 - DP14GM2406041AA																																	
M4 - DP14GM2406041AB																																	
M5 - DP14GM3004041AA																																	
M6 - DP14GM3004041AB																																	
M7 - DP14GM3006041AA																																	
M8 - DP14GM3006041AB																																	
M9 - DP14GM3604041AA																																	
M10 - DP14GM3604041AB																																	
M11 - DP14GM3606041AA																																	
M12 - DP14GM3606041AB																																	
M13 - DP14GM3608041AA																																	
M14 - DP14GM3608041AB																																	
M15 - DP14GM4206041AA																																	
M16 - DP14GM4206041AB																																	
M17 - DP14GM4208041AA																																	
M18 - DP14GM4208041AB																																	
M19 - DP14GM4806041AA																																	
M20 - DP14GM4806041AB																																	
M21 - DP14GM4808041AA																																	
M22 - DP14GM4808041AB																																	
M23 - DP14GM4810041AA																																	
M24 - DP14GM4810041AB																																	
M25 - DP14GM6008041AA																																	
M26 - DP14GM6010041AA																																	
M27 - DP14GM6012041AA																																	
M28 - DP14GM6108041AA																																	
M29 - DP14GM6110041AA																																	
M30 - DP14GM6112041AA																																	
71	20464801NG BLOWER DOOR 32" (M1, M2, M3, M4, M5, M6, M7, M8, M9, M10, M11, M12, M13, M14, M15, M16, M17, M18)																																
71	20464806NG BLOWER DOOR 40" (M19, M20, M21, M22, M23, M24, M25, M26, M27, M28, M29, M30)																																
81	20464802NG EVAP/CONTROL DOOR-32 (M1, M2, M3, M4, M5, M6, M7, M8, M9, M10, M11, M12, M13, M14, M15, M16, M17, M18)																																
81	20464807NG EVAP/CONTROL DOOR-40 (M19, M20, M21, M22, M23, M24, M25, M26, M27, M28, M29, M30)																																
91	0121G00526NG HEAT EXCHANGER DOOR 32" (M1, M2, M3, M4, M5, M6, M7, M8, M9, M10, M11, M12, M13, M14, M15, M16, M17, M18)																																
91	0121G00527NG HEAT EXCHANGER DOOR 40" (M19, M20, M21, M22, M23, M24, M25, M26, M27, M28, M29, M30)																																
101	20464804NG COMPRESSOR DOOR-32 (M1, M2, M3, M4, M5, M6, M7, M8, M9, M10, M11, M12, M13, M14, M15, M16, M17, M18)																																
101	20464809NG COMPRESSOR DOOR-38 (M19, M20, M21, M22, M23, M24, M25, M26, M27, M28, M29, M30)																																
111	0121G00465NG COND SIDE PANEL- 32 (M9, M10, M11, M12, M13, M14)																																
111	20467701NG COND SIDE PANEL- 32 (M1, M2, M3, M4, M5, M6, M7, M8, M15, M16, M17, M18)																																
111	20467702NG COND SIDE PANEL-38 (M19, M20, M21, M22, M23, M24, M28, M29, M30)																																
111	0121G00467NG COND SIDE PANEL-40 (M25, M26, M27)																																
121	20466101NG UTILITY PANEL 32" (M1, M2, M3, M4, M5, M6, M7, M8, M9, M10, M11, M12, M13, M14, M15, M16, M17, M18)																																
121	20466102NG UTILITY PANEL 40" (M19, M20, M21, M22, M23, M24, M25, M26, M27, M28, M29, M30)																																
131	0121G00442NG PNL, DUCT, GAS 32.5" (M1, M2, M3, M4, M5, M6, M7, M8, M9, M10, M11, M12, M13, M14, M15, M16, M17, M18)																																
131	0121G00443NG PNL, DUCT, GAS 40" (M19, M20, M21, M22, M23, M24, M25, M26, M27, M28, M29, M30)																																
141	0121G00460 POST-SUPPORT, SIDE (M1, M2, M3, M4, M5, M6, M7, M8, M9, M10, M11, M12, M13, M14, M15, M16, M17, M18)																																
141	0121G00462 POST-SUPPORT, SIDE (M19, M20, M21, M22, M23, M24, M25, M26, M27, M28, M29, M30)																																
161	20464401NG LOUVERED PANEL, COND SIDE 32" (M1, M2, M3, M4, M5, M6, M7, M8, M9, M10, M11, M12, M13, M14, M15, M16, M17, M18)																																
161	20464402NG LOUVERED PANEL, COND SIDE 40" (M19, M20, M21, M22, M23, M24, M25, M26, M27, M28, M29, M30)																																
181	0121G00290 BASE PAN RAIL (QTY 2)																																
251	20464201NG CORNER POST-COMP END 32" (M1, M2, M3, M4, M5, M6, M7, M8)																																

# Partition Assembly



# Partition Assembly

Ref. Part No:	No:	Description:	Ref. Part No:	No:	Description:
<i>Image 1:</i>			<b>Expanded Model Nomenclature</b>		
71	20465302	BLOWER DIVIDER (M19, M20, M21, M22, M23, M24, M25, M26, M27, M28, M29, M30)	M1	-	DP14GM2404041AA
71	20465305	BLOWER DIVIDER (M1, M2, M3, M4, M5, M6, M7, M8)	M2	-	DP14GM2404041AB
71	20465304	BLOWER DIVIDER 32" 10 X 9 (M9, M10, M11, M12, M13, M14, M15, M16, M17, M18)	M3	-	DP14GM2406041AA
101	20465201	FILLER PANEL, HEAT EXCHANGER 32" (M1, M2, M3, M4, M5, M6, M7, M8, M9, M10, M11, M12, M13, M14, M15, M16, M17, M18)	M4	-	DP14GM2406041AB
101	20465202	FILLER PANEL, HEAT EXCHANGER 40" (M19, M20, M21, M22, M23, M24, M25, M26, M27, M28, M29, M30)	M5	-	DP14GM3004041AA
121	20465501	EVAP/HEAT EXCHANGER DIVIDER 32" (M1, M2, M3, M4, M5, M6, M7, M8, M9, M10, M11, M12, M13, M14, M15, M16, M17, M18)	M6	-	DP14GM3004041AB
121	20465502	EVAP/HEAT EXCHANGER DIVIDER 38" (M19, M20, M21, M22, M23, M24, M25, M26, M27, M28, M29, M30)	M7	-	DP14GM3006041AA
131	20465701	FAN PARTITION SHELF	M8	-	DP14GM3006041AB
141	20465801	FAN SURROUND 32" (M1, M2, M3, M4, M5, M6, M7, M8, M9, M10, M11, M12, M13, M14, M15, M16, M17, M18)	M9	-	DP14GM3604041AA
141	20465802	FAN SURROUND 40" (M19, M20, M21, M22, M23, M24, M25, M26, M27, M28, M29, M30)	M10	-	DP14GM3604041AB
221	20463802	EVAP/BASEPAN BLOCK 32" (M1, M2, M3, M4, M5, M6, M7, M8, M9, M10, M11, M12, M13, M14, M15, M16, M17, M18)	M11	-	DP14GM3606041AA
221	20463801	EVAP/BASEPAN BLOCK 40" (M19, M20, M21, M22, M23, M24, M25, M26, M27, M28, M29, M30)	M12	-	DP14GM3606041AB
231	0121G00555	DRAIN CHANNEL, SUCTION TUBE	M13	-	DP14GM3608041AA
			M14	-	DP14GM3608041AB
			M15	-	DP14GM4206041AA
			M16	-	DP14GM4206041AB
			M17	-	DP14GM4208041AA
			M18	-	DP14GM4208041AB
			M19	-	DP14GM4806041AA
			M20	-	DP14GM4806041AB
			M21	-	DP14GM4808041AA
			M22	-	DP14GM4808041AB
			M23	-	DP14GM4810041AA
			M24	-	DP14GM4810041AB
			M25	-	DP14GM6008041AA
			M26	-	DP14GM6010041AA
			M27	-	DP14GM6012041AA
			M28	-	DP14GM6108041AA
			M29	-	DP14GM6110041AA
			M30	-	DP14GM6112041AA

# Basepan / Blower Assembly

Image 1

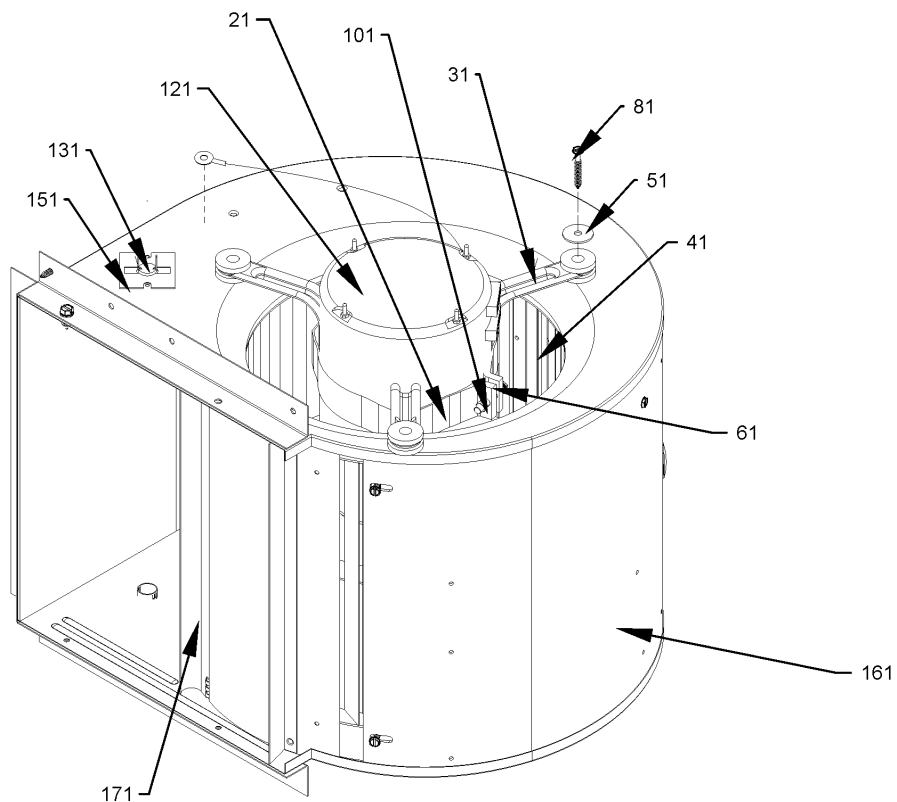
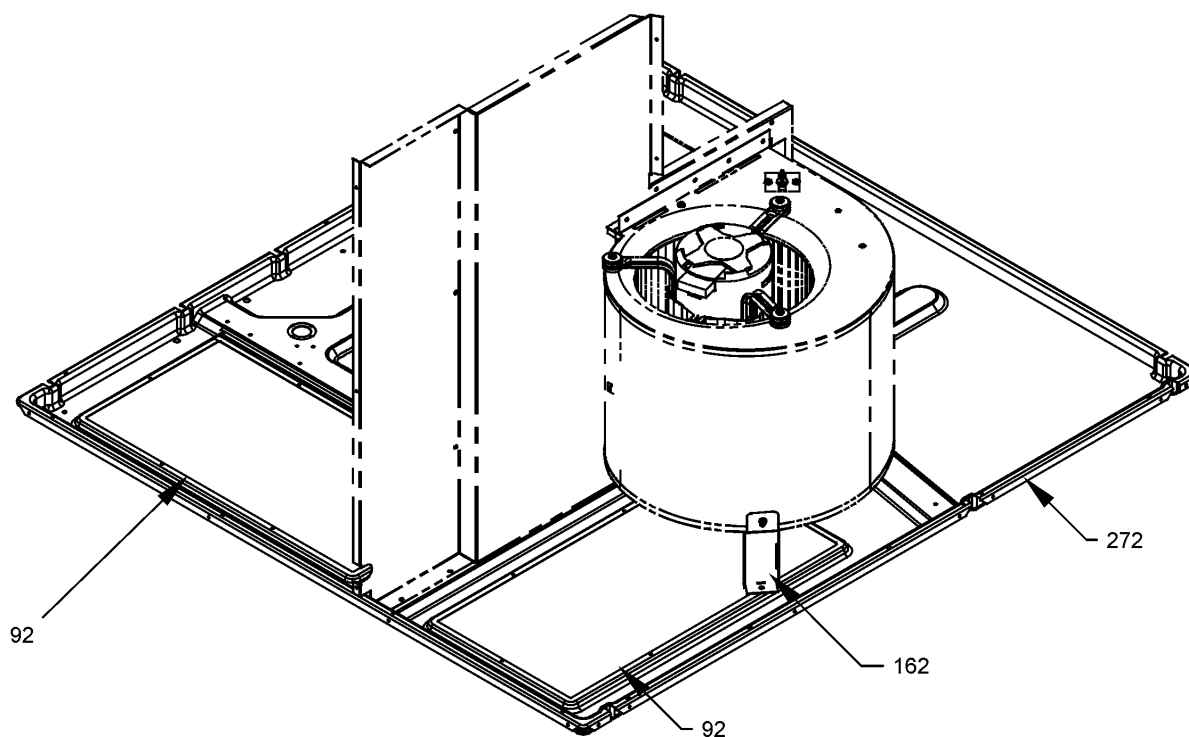


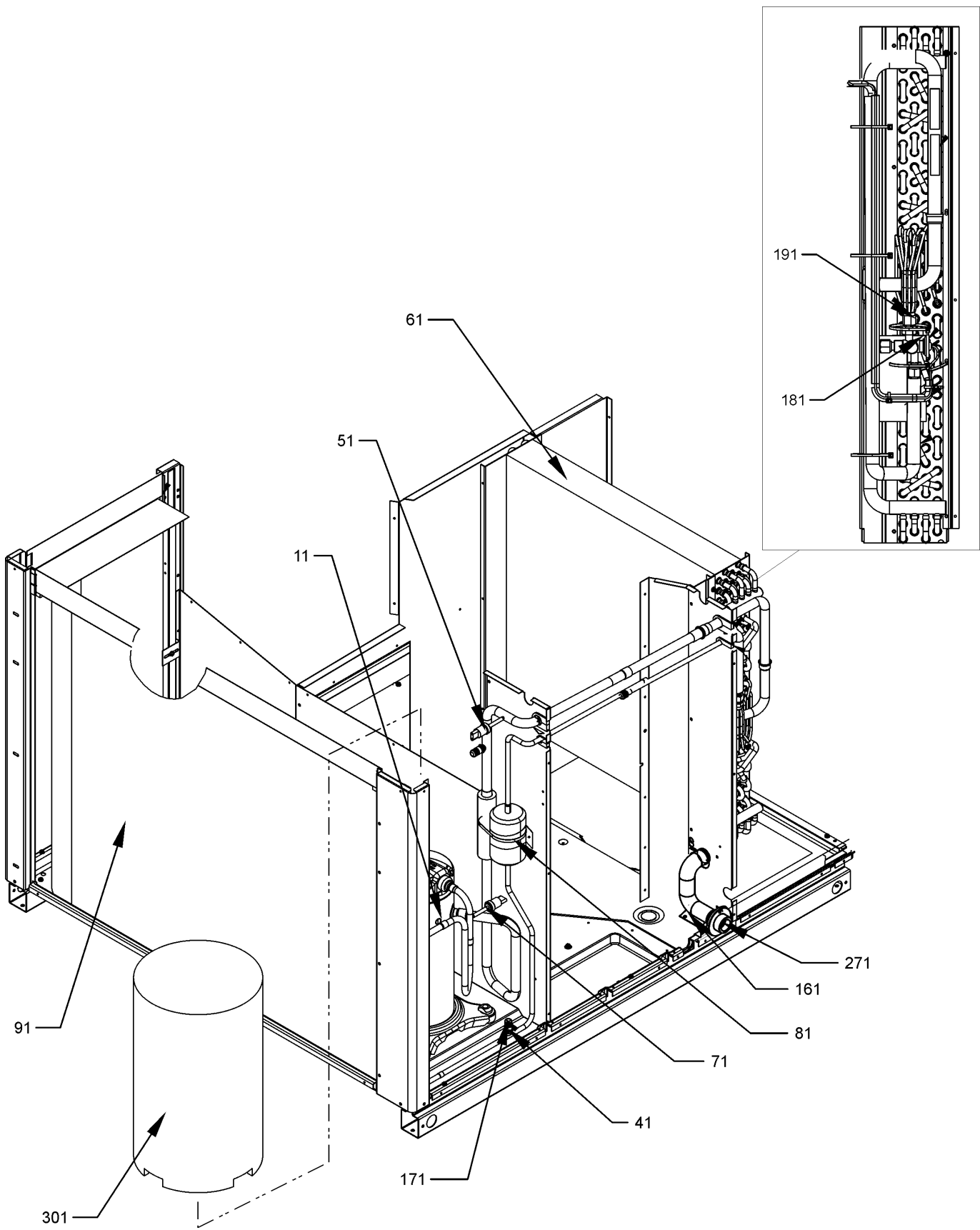
Image 2



# Basepan / Blower Assembly

Ref. Part No: No:	Description:	Ref. Part No: No:	Description:
<b>Image 1:</b>		<b>Expanded Model Nomenclature</b>	
21	0121M00038	MOTOR MOUNT BAND	M1 - DP14GM2404041AA
31	B1376857	MOTOR MOUNT ARM (QTY 3)	M2 - DP14GM2404041AB
41	D6723303	BLOWER WHEEL (M9, M10, M11, M12, M13, M14, M15, M16, M17, M18)	M3 - DP14GM2406041AA
41	B1368016	BLOWER WHEEL 10 X 8 (M1, M2, M3, M4, M5, M6, M7, M8)	M4 - DP14GM2406041AB
41	B1368000	BLOWER WHEEL 11 X 10 (M19, M20, M21, M22, M23, M24, M25, M26, M27, M28, M29, M30)	M5 - DP14GM3004041AA
51	B1392918	WASHER FLAT 1/4 ID X 1 OD (QTY 3)	M6 - DP14GM3004041AB
61	B1393323	MACHINE SCREW HWH 1/4-20 X 1-1/2 BZ	M7 - DP14GM3006041AA
81	M0250565	TC SCREW 1.25" (QTY 3)	M8 - DP14GM3006041AB
101	B1393800	LOCKNUT, NYLON, INSERT 1/4, 20	M9 - DP14GM3604041AA
121	0131G00010	PROGRAMMED MOTOR (M1, M2, M3, M4)	M10 - DP14GM3604041AB
121	0131G00011	PROGRAMMED MOTOR (M5, M6, M7, M8)	M11 - DP14GM3606041AA
121	0131G00012	PROGRAMMED MOTOR (M9, M10, M11, M12, M13, M14)	M12 - DP14GM3606041AB
121	0131G00013	PROGRAMMED MOTOR (M15, M16, M17, M18)	M13 - DP14GM3608041AA
121	0131G00014	PROGRAMMED MOTOR (M19, M20, M21, M22, M23, M24)	M14 - DP14GM3608041AB
121	0131G00015	PROGRAMMED MOTOR (M25, M28)	M15 - DP14GM4206041AA
121	0131G00053	PROGRAMMED MOTOR (M26, M29)	M16 - DP14GM4206041AB
121	0131G00054	PROGRAMMED MOTOR (M27, M30)	M17 - DP14GM4208041AA
131	20269903	AUXILIARY LIMIT, AUTO RESET	M18 - DP14GM4208041AB
151	2509503F	AUXILIARY LIMIT BRACKET	M19 - DP14GM4806041AA
151	2509503F	AUXILIARY LIMIT BRACKET	M20 - DP14GM4806041AB
161	0271G00025	BLOWER HOUSING ASSY 10 X 8 (M1, M2, M3, M4, M5, M6, M7, M8)	M21 - DP14GM4808041AA
161	0271G00024	BLOWER HOUSING ASSY 10 X 9 (M9, M10, M11, M12, M13, M14, M15, M16, M17, M18)	M22 - DP14GM4808041AB
161	2539309	BLOWER HOUSING ASSY 11 X 10 (M19, M20, M21, M22, M23, M24, M25, M26, M27, M28, M29, M30)	M23 - DP14GM4810041AA
171	764742	BLOWER BLOCK-OFF (M9, M10, M11, M12, M13, M14, M15, M16, M17, M18)	M24 - DP14GM4810041AB
171	764740	BLOWER BLOCK-OFF 10 X 8 (M1, M2, M3, M4, M5, M6, M7, M8)	M25 - DP14GM6008041AA
171	1864703F	BLOWER CUT-OFF (M19, M20, M21, M22, M23, M24, M25, M26, M27, M28, M29, M30)	M26 - DP14GM6010041AA
			M27 - DP14GM6012041AA
			M28 - DP14GM6108041AA
			M29 - DP14GM6110041AA
			M30 - DP14GM6112041AA
<b>Image 2:</b>			
92	0121G00148	SINGLE COVER, DOWN DISCHARGE (QTY 2)	
162	4322801	11 X 10 BLOWER SUPPORT LRG (M19, M20, M21, M22, M23, M24, M25, M26, M27, M28, M29, M30)	
272	0121G00444	BASEPAN, PACKAGE	

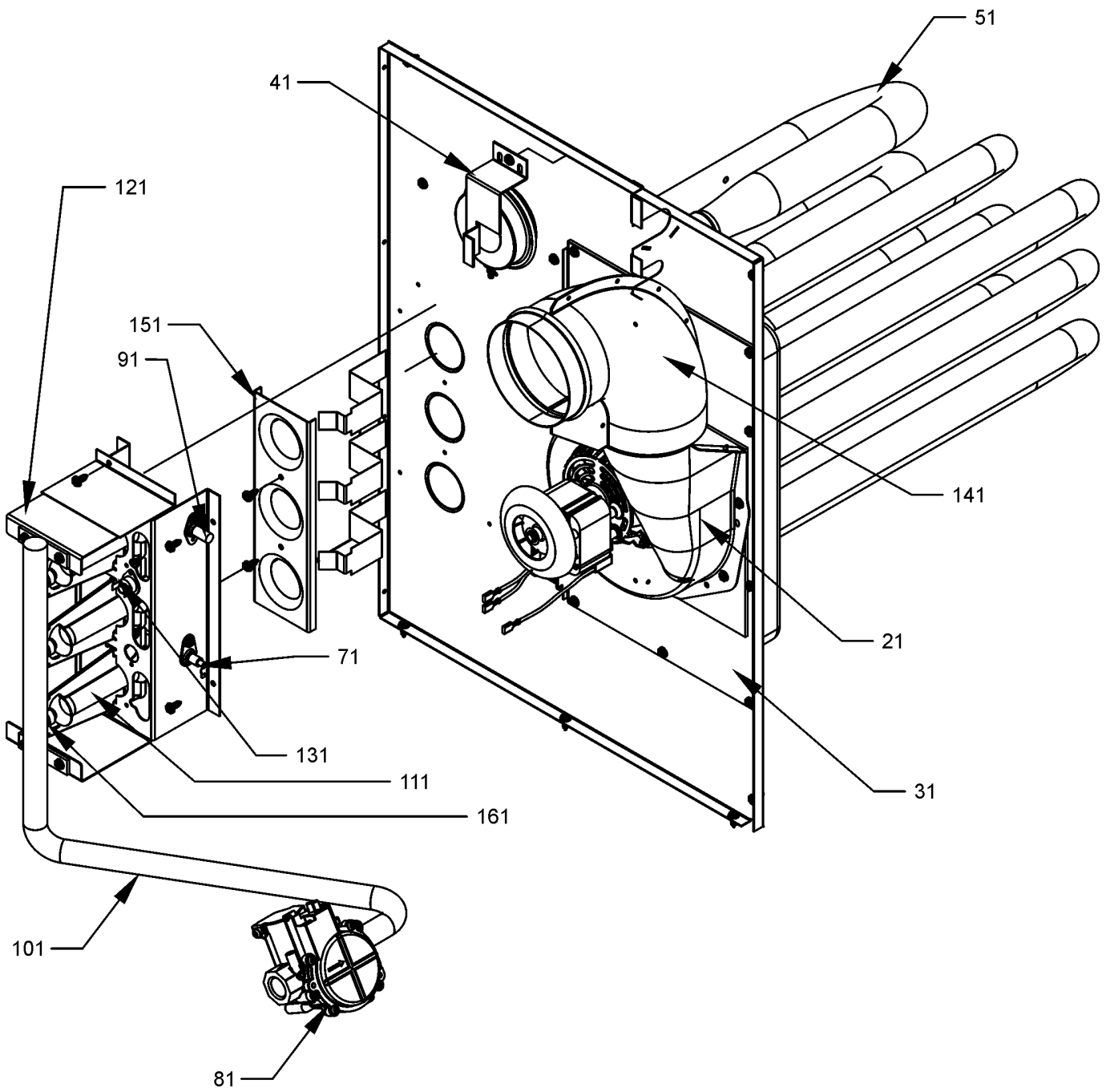
# Compressor / Tubing Assembly



# Compressor / Tubing Assembly

Ref. Part No:	No:	Description:	Ref. Part No:	No:	Description:
<b>Image 1:</b>			<b>Image 1:</b>		
11	ZPS51K5EPFV130	COMP, 51900/208/230/60/1 (M25, M26, M27)	NS	0259G00209	BLOWER HARNESS (M1, M2, M3, M4, M5, M6, M7, M8, M9, M10, M11, M12, M13, M14, M15, M16, M17, M18)
11	ZP29K5EPFV130	COMP,29000,208/230/60/1 (M9, M10, M11, M12, M13, M14)	NS	B1339533	COMPRESSOR GROMMET (QTY 4)
11	ZP20K5EPFV130	COMPRESSOR 20000, 208/230/60/1 (M1, M2, M3, M4)	NS	0159G00002	COMPRESSOR SCROLL HARNESS (M1, M2, M3, M4, M5, M6, M7, M8, M9, M10, M11, M12, M13, M14)
11	ZP25K5EPFV130	COMPRESSOR 25200, 208/230/60/1 (M5, M6, M7, M8)	NS	0159G00005	COMPRESSOR SCROLL HARNESS (M25, M26, M27, M28, M29, M30)
11	ZP34K5EPFV130	COMPRESSOR 34500, 208/230/60/1 (M15, M16, M17, M18)	NS	0159G00006	COMPRESSOR SCROLL HARNESS (M19, M20, M21, M22, M23, M24)
11	ZP39K5EPFV130	COMPRESSOR 39000, 208/230/60/1 (M19, M20, M21, M22, M23, M24)	NS	0159G00009	COMPRESSOR SCROLL HARNESS (M15, M16, M17, M18)
11	ZPS49K5EPFV130	COMPRESSOR 49100, 208/230/60/1 (M28, M29, M30)	NS	0159G00001	COMPRESSOR SOLENOID CABLE (M25, M26, M27, M28, M29, M30)
41	B1373315	ACCESS FITTING (QTY 2)	NS	20464901DF	DRAIN PAN-EVAP COIL
51	0130M00087	CUT-OUT SWITCH, LOW PRESSURE (M25, M26, M27, M28, M29, M30)	NS	B1810011	HOSE CLAMP 1.25 (QTY 2)
61	0202G00538	EVAPORATOR COIL ASSY (M25, M26, M27, M28, M29, M30)	NS	M0221641	SCREW-SHOULDER TF (QTY 4)
61	0202G00565	EVAPORATOR COIL ASSY (M1, M2, M3, M4)	NS	M0221641	TF SHOULDER SCREW (QTY 4)
61	0202G00566	EVAPORATOR COIL ASSY (M5, M6, M7, M8)	<b>Expanded Model Nomenclature</b>		
61	0202G00567	EVAPORATOR COIL ASSY (M9, M10, M11, M12, M13, M14)	M1 - DP14GM2404041AA		
61	0202G00685	EVAPORATOR COIL ASSY (M19, M20, M21, M22, M23, M24)	M2 - DP14GM2404041AB		
61	0202G00697	EVAPORATOR COIL ASSY (M15, M16, M17, M18)	M3 - DP14GM2406041AA		
71	0130M00074	CUT-OUT SWITCH, HIGH PRESSURE (M1, M2, M3, M4, M5, M6, M7, M8, M9, M10, M11, M12, M13, M14, M15, M16, M17, M18, M19, M20, M21, M22, M23, M24, M25, M26, M27)	M4 - DP14GM2406041AB		
81	0162R00009	FILTER DRIER (M25, M26, M27)	M5 - DP14GM3004041AA		
81	B1219212	SINGLE-FLOW FILTER DRIER, STEEL (M1, M2, M3, M4, M5, M6, M7, M8, M9, M10, M11, M12, M13, M14)	M6 - DP14GM3004041AB		
81	B1219225	SINGLE-FLOW FILTER DRIER, STEEL (M15, M16, M17, M18, M19, M20, M21, M22, M23, M24, M28, M29, M30)	M7 - DP14GM3006041AA		
91	0201G00139	COND COIL TUBING ASSY (M19, M20, M21, M22, M23, M24)	M8 - DP14GM3006041AB		
91	0201G00142	COND COIL TUBING ASSY (M1, M2, M3, M4, M5, M6, M7, M8)	M9 - DP14GM3604041AA		
91	0201G00249	COND COIL TUBING ASSY (M9, M10, M11, M12, M13, M14)	M10 - DP14GM3604041AB		
91	0201G00252	COND COIL TUBING ASSY (M25, M26, M27)	M11 - DP14GM3606041AA		
91	0201G00262	COND COIL TUBING ASSY (M15, M16, M17, M18)	M12 - DP14GM3606041AB		
91	0201G00369	COND COIL TUBING ASSY (M28, M29, M30)	M13 - DP14GM3608041AA		
161	20498302	DRAIN TUBE 32" (M1, M2, M3, M4, M5, M6, M7, M8, M9, M10, M11, M12, M13, M14, M15, M16, M17, M18)	M14 - DP14GM3608041AB		
161	20498301	DRAIN TUBE 40" (M19, M20, M21, M22, M23, M24, M25, M26, M27, M28, M29, M30)	M15 - DP14GM4206041AA		
171	0163M00175	CAP WITH O-RING (QTY 2)	M16 - DP14GM4206041AB		
181	0151M00047	VALVE, NXT (M25, M26, M27, M28, M29, M30)	M17 - DP14GM4208041AA		
191	0162M00301	FLOWRATOR (M15, M16, M17, M18)	M18 - DP14GM4208041AB		
191	0162M00302	FLOWRATOR (M5, M6, M7, M8)	M19 - DP14GM4806041AA		
191	0162M00303	FLOWRATOR (M25, M26, M27, M28, M29, M30)	M20 - DP14GM4806041AB		
191	0162M00307	FLOWRATOR (M1, M2, M3, M4)	M21 - DP14GM4808041AA		
191	0162M00308	FLOWRATOR (M9, M10, M11, M12, M13, M14)	M22 - DP14GM4808041AB		
191	0162M00328	FLOWRATOR (M19, M20, M21, M22, M23, M24)	M23 - DP14GM4810041AA		
271	20513001	EVAP DRAIN FITTING	M24 - DP14GM4810041AB		
301	B1488806	COMPRESSOR SOUND BLANKET (M15, M16, M17, M18, M19, M20, M21, M22, M23, M24, M25, M26, M27, M28, M29, M30)	M25 - DP14GM6008041AA		
301	B1488807	COMPRESSOR SOUND BLANKET (M1, M2, M3, M4, M5, M6, M7, M8, M9, M10, M11, M12, M13, M14)	M26 - DP14GM6010041AA		
NS	0259G00023	BLOWER HARNESS (M19, M20, M21, M22, M23, M24)	M27 - DP14GM6012041AA		
			M28 - DP14GM6108041AA		
			M29 - DP14GM6110041AA		
			M30 - DP14GM6112041AA		

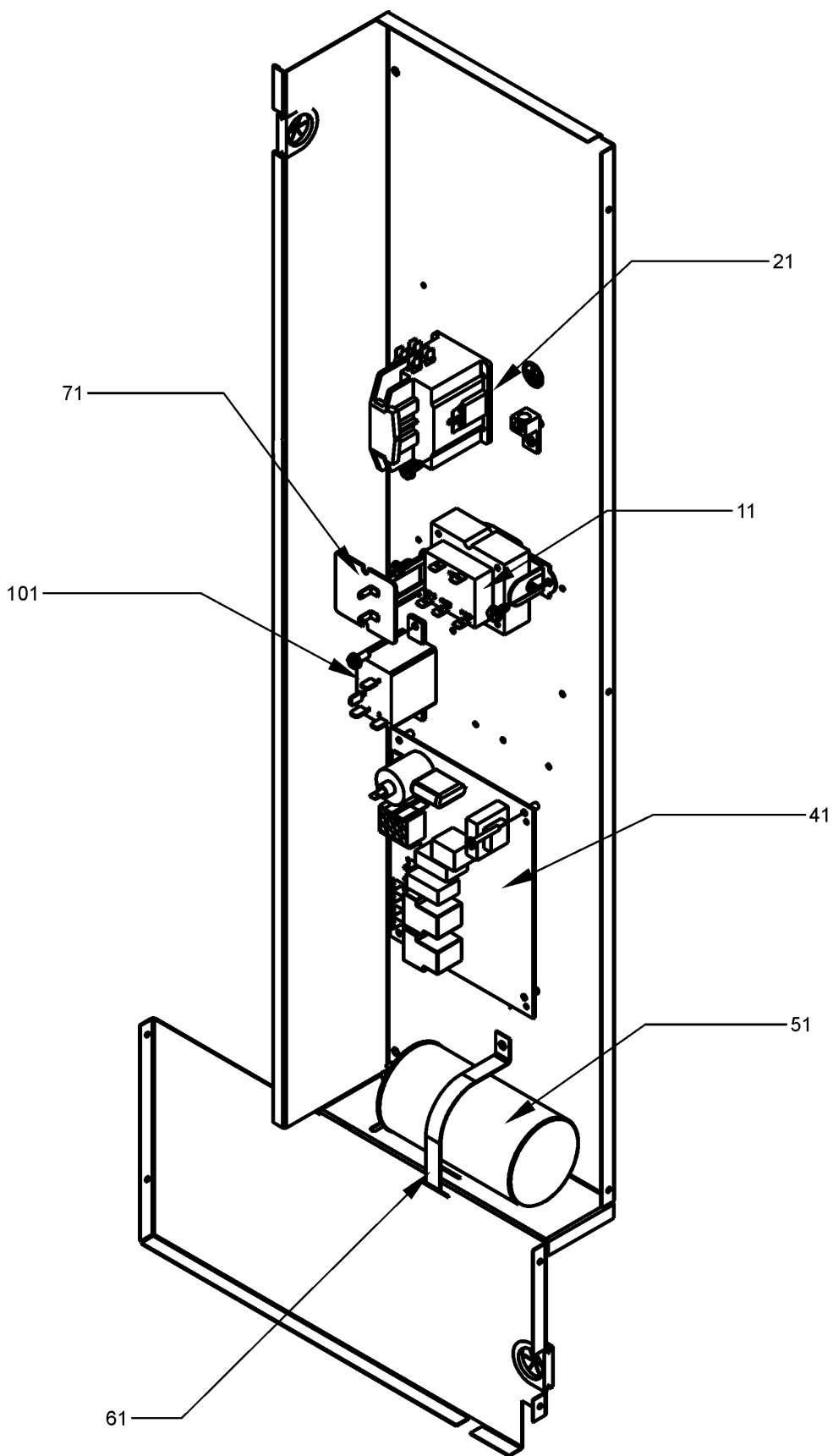
# Heat Exchanger / Manifold / Gas Valve



# Heat Exchanger / Manifold / Gas Valve

Ref. Part No:	No:	Description:	Ref. Part No:	No:	Description:
<b>Image 1:</b>			<b>Image 1:</b>		
21	0131G00000P	ID BLOWER (M1, M2, M3, M4, M5, M6, M7, M8, M9, M10, M11, M12, M13, M14, M15, M16, M17, M18, M19, M20, M21, M22, M23, M24)	NS	20463001	ID BLOWER PLATE GASKET LRG (M19, M20, M21, M22, M23, M24, M25, M26, M27, M28, M29, M30)
21	0131G00001	ID BLOWER (M25, M26, M27, M28, M29, M30)	NS	20462801	ID BLOWER PLATE GASKET SML (M1, M2, M3, M4, M5, M6, M7, M8, M9, M10, M11, M12, M13, M14, M15, M16, M17, M18)
31	0121G00583	PLATE-ID BLWR LRG BRNR (M19, M20)			
31	0121G00584	PLATE-ID BLWR LRG BRNR (M21, M22, M25, M28)			
31	0121G00604	PLATE-ID BLWR LRG BRNR (M27, M30)			
31	0121G00580	PLATE-ID BLWR LRG 4 BRNR (M13, M14, M17, M18)			
31	0121G00581	PLATE-ID BLWR LRG 5 BRNR (M23, M24)			
31	0121G00582	PLATE-ID BLWR LRG 6 BRNR (M26, M29)			
31	0121G00578	PLATE-ID BLWR SML 2 BRNR (M1, M2, M5, M6, M9, M10)			
31	0121G00579	PLATE-ID BLWR SML 3 BRNR (M3, M4, M7, M8, M11, M12, M15, M16)			
41	11112501	PRESSURE SWITCH			
51	20490715	PART/TUBE ASSY (M1, M2, M5, M6, M9, M10)			
51	20490717	PART/TUBE ASSY (M19, M20)			
51	20490718	PART/TUBE ASSY (M27, M30)			
51	20490710	PART/TUBE ASSY 3B (M3, M4, M7, M8, M11, M12, M15, M16)			
51	20490711	PART/TUBE ASSY 4B (M13, M14, M17, M18)			
51	20490712	PART/TUBE ASSY 4B (M21, M22, M25, M28)			
51	20490713	PART/TUBE ASSY 5B (M23, M24, M26, M29)			
71	0130F00014	IGNITOR			
81	0151F00000P	GAS VALVE - WHITE-RODGERS 2-STAGE (M25, M26, M27, M28, M29, M30)			
81	B1282628	GAS VALVE (36G) (M2, M4, M6, M8, M10, M12, M14, M16, M18, M20, M22, M24)			
81	0151M00013	GAS VALVE (HW) SINGLE STAGE (M1, M3, M5, M7, M9, M11, M13, M15, M17, M19, M21, M23)			
91	0130F00010	FLAME SENSOR			
101	0121M00035P	MANIFOLD - 2 BRNR (M1, M2, M5, M6, M9, M10)			
101	0121M00036P	MANIFOLD - 3 BRNR (M19, M20)			
101	20493103	MANIFOLD - 3 BRNR (M3, M4, M7, M8, M11, M12, M15, M16)			
101	20493104	MANIFOLD - 4 BRNR (M13, M14, M17, M18)			
101	20493105	MANIFOLD - 4 BRNR (M21, M22, M25, M28)			
101	20493106	MANIFOLD - 5 BRNR (M23, M24, M26, M29)			
101	20493107	MANIFOLD - 6 BRNR (M27, M30)			
111	0163F00017	BECKETT BURNER (QTY A/R)			
121	20190410	BURNER BRACKET 2B (M1, M2, M5, M6, M9, M10)			
121	20190411	BURNER BRACKET 3B (M3, M4, M7, M8, M11, M12, M15, M16, M19, M20)			
121	20190412	BURNER BRACKET 4B (M13, M14, M17, M18, M21, M22, M25, M28)			
121	20190413	BURNER BRACKET 5B (M23, M24, M26, M29)			
121	0121F00145	BURNER BRACKET 6B (M27, M30)			
131	10123532	MANUAL RESET LIMIT 350°F (M1, M2, M3, M4, M5, M6, M7, M8, M9, M10, M11, M12, M13, M14, M15, M16, M17, M18, M19, M20, M21, M22, M23, M24)			
131	10123529	MANUAL RESET LIMIT-GREEN (M25, M26, M27, M28, M29, M30)			
141	20484401	FLUE ELBOW LEFT			
141	20484402	FLUE ELBOW RIGHT			
151	11072201	ORIFICE SHIELD (M1, M2, M5, M6, M9, M10)			
151	11072202	ORIFICE SHIELD (M3, M4, M7, M8, M11, M12, M15, M16, M19, M20)			
151	11072203	ORIFICE SHIELD (M13, M14, M17, M18, M21, M22, M25, M28)			
151	11072204	ORIFICE SHIELD (M23, M24, M26, M29)			
151	11072205	ORIFICE SHIELD (M27, M30)			
161	10716005	ORIFICE (QTY A/R)			
			<b>Expanded Model Nomenclature</b>		
			M1 - DP14GM2404041AA		
			M2 - DP14GM2404041AB		
			M3 - DP14GM2406041AA		
			M4 - DP14GM2406041AB		
			M5 - DP14GM3004041AA		
			M6 - DP14GM3004041AB		
			M7 - DP14GM3006041AA		
			M8 - DP14GM3006041AB		
			M9 - DP14GM3604041AA		
			M10 - DP14GM3604041AB		
			M11 - DP14GM3606041AA		
			M12 - DP14GM3606041AB		
			M13 - DP14GM3608041AA		
			M14 - DP14GM3608041AB		
			M15 - DP14GM4206041AA		
			M16 - DP14GM4206041AB		
			M17 - DP14GM4208041AA		
			M18 - DP14GM4208041AB		
			M19 - DP14GM4806041AA		
			M20 - DP14GM4806041AB		
			M21 - DP14GM4808041AA		
			M22 - DP14GM4808041AB		
			M23 - DP14GM4810041AA		
			M24 - DP14GM4810041AB		
			M25 - DP14GM6008041AA		
			M26 - DP14GM6010041AA		
			M27 - DP14GM6012041AA		
			M28 - DP14GM6108041AA		
			M29 - DP14GM6110041AA		
			M30 - DP14GM6112041AA		

# Control Panel



# Control Panel

## Ref. Part

No: No:

Description:

## Ref. Part

No: No:

Description:

### Image 1:

11	0130M00138	TRANSFORMER 208/230, 24V
21	CONT1P025024V	CONTACTOR 25 AMP, 1P, 24V (M1, M2, M3, M4, M5, M6, M7, M8, M9, M10, M11, M12, M13, M14)
21	CONT1P030024V	CONTACTOR 30 AMP, 1P, 24V (M15, M16, M17, M18, M19, M20, M21, M22, M23, M24)
21	CONT2P040024V	CONTACTOR 40 AMP, 2P, 24V (M25, M26, M27, M28, M29, M30)
41	PCBAG123	IGNITION BOARD, DSI INTEGRATED (M1, M2, M3, M4, M5, M6, M7, M8, M9, M10, M11, M12, M13, M14, M15, M16, M17, M18, M19, M20, M21, M22, M23, M24)
41	PCBAG127	IGNITION BOARD, DSI, 2 STG (M25, M26, M27, M28, M29, M30)
51	CAP100400440CT	CAP, 10/40 MFD, 440V/ DUAL RD (M28, M29, M30)
51	CAP050350440CS	CAPACITOR 5/35/440V (M1, M2, M3, M4)
51	CAP050400440CT	CAPACITOR 5/40/440V/DUAL RD (M5, M6, M7, M8, M25, M26, M27)
51	CAP050450440CT	CAPACITOR 5/45/440V/DUAL RD (M9, M10, M11, M12, M13, M14, M15, M16, M17, M18, M19, M20, M21, M22, M23, M24)
61	20520901	CAPACITOR STRAP
71	10728342	LIMIT SWITCH (M1, M2, M3, M4, M5, M6, M7, M8, M9, M10, M11, M12, M13, M14, M15, M16, M17, M18)
71	10728343	LIMIT SWITCH (M25, M26, M27, M28, M29, M30)
71	10728344	LIMIT SWITCH (M19, M20, M21, M22, M23, M24)
101	B1370751	24V RELAY (M1, M2, M3, M4, M5, M6, M7, M8, M9, M10, M11, M12, M13, M14, M15, M16, M17, M18, M19, M20, M21, M22, M23, M24)
NS	0259G00214	ECONOMIZER HARNESS (M19, M20, M21, M22, M23, M24)
NS	0259G00083	HARNESS-CONTROL, FAN (M19, M20, M21, M22, M23, M24)
NS	0259G00117	HARNESS-CONTROL, FAN (M25, M26, M27, M28, M29, M30)
NS	0259G00207	HARNESS-CONTROL, FAN (M1, M2, M3, M4, M5, M6, M7, M8, M9, M10, M11, M12, M13, M14, M15, M16, M17, M18)
NS	0259G00113	PLUG ASSY, 12 PIN MALE (M19, M20, M21, M22, M23, M24)
NS	0259G00192	WIRE HARNESS - 6 CIRCUIT (M25, M26, M27, M28, M29, M30)
NS	0259G00044	WIRE HARNESS, 9 CIRCUIT (M25, M26, M27, M28, M29, M30)
NS	0259G00031	WIRE HARNESS, ECONOMIZER (M25, M26, M27, M28, M29, M30)

### Expanded Model Nomenclature

M1 - DP14GM2404041AA
M2 - DP14GM2404041AB
M3 - DP14GM2406041AA
M4 - DP14GM2406041AB
M5 - DP14GM3004041AA
M6 - DP14GM3004041AB
M7 - DP14GM3006041AA
M8 - DP14GM3006041AB
M9 - DP14GM3604041AA
M10 - DP14GM3604041AB
M11 - DP14GM3606041AA
M12 - DP14GM3606041AB
M13 - DP14GM3608041AA
M14 - DP14GM3608041AB
M15 - DP14GM4206041AA
M16 - DP14GM4206041AB
M17 - DP14GM4208041AA
M18 - DP14GM4208041AB
M19 - DP14GM4806041AA
M20 - DP14GM4806041AB
M21 - DP14GM4808041AA
M22 - DP14GM4808041AB
M23 - DP14GM4810041AA
M24 - DP14GM4810041AB
M25 - DP14GM6008041AA
M26 - DP14GM6010041AA
M27 - DP14GM6012041AA
M28 - DP14GM6108041AA
M29 - DP14GM6110041AA
M30 - DP14GM6112041AA