

DM80VC Two Stage Variable Speed Upflow Gas Furnace

DM80VC0603BNAA
DM80VC0603BNAB
DM80VC0603BXAA
DM80VC0603BXAB
DM80VC0604BNAB
DM80VC0604BXAB
DM80VC0803BNAA
DM80VC0803BNAB
DM80VC0803BXAA
DM80VC0803BXAB
DM80VC0804CNAA
DM80VC0804CNAB
DM80VC0804CXAA
DM80VC0804CXAB
DM80VC0805CNAB
DM80VC0805CXAB
DM80VC0805DNAA
DM80VC0805DNAB
DM80VC0805DXAA
DM80VC0805DXAB
DM80VC1005CNAB
DM80VC1005CXAB



This manual is to be used by qualified technicians only.

This manual replaces RP-D2301.

Important Information

Index

Functional Parts List	3
Illustration and Parts	4 - 9

Views shown are for parts illustrations only, not servicing procedures.

Text Codes:

AR - As Required

NA - Not Available

NS - Not Shown

00000000 - See Note

QTY - Quantity Example (QTY 3) (If Quantity not shown, Quantity = 1)

M - Model Example (M1) (If M Code not shown, then part is used on all Models)

Expanded Model Nomenclature:

Example M1 - Model#1 M2 - Model#2 M3 - Model#3

Daikin Manufacturing Company, L.P. is not responsible for personal injury or property damage resulting from improper service. Review all service information before beginning repairs.

Warranty service must be performed by an authorized technician, using authorized factory parts. If service is required after the warranty expires, Daikin Manufacturing Company, L.P. also recommends contacting an authorized technician and using authorized factory parts.

Daikin Manufacturing Company, L.P. reserves the right to discontinue, or change at any time, specifications or designs without notice or without incurring obligations.

For assistance within the U.S.A. contact:

Homeowner Support
Daikin North America, LLC
19001 Kermier Road
Waller, Texas 77484
855-770-5678-Telephone
713-863-2382-Facsimile

For assistance outside the U.S.A. contact:

International Division
Daikin North America, LLC
19001 Kermier Road
Waller, Texas 77484
713-861-2500-Telephone
713-863-2382-Facsimile

Functional Parts

Part

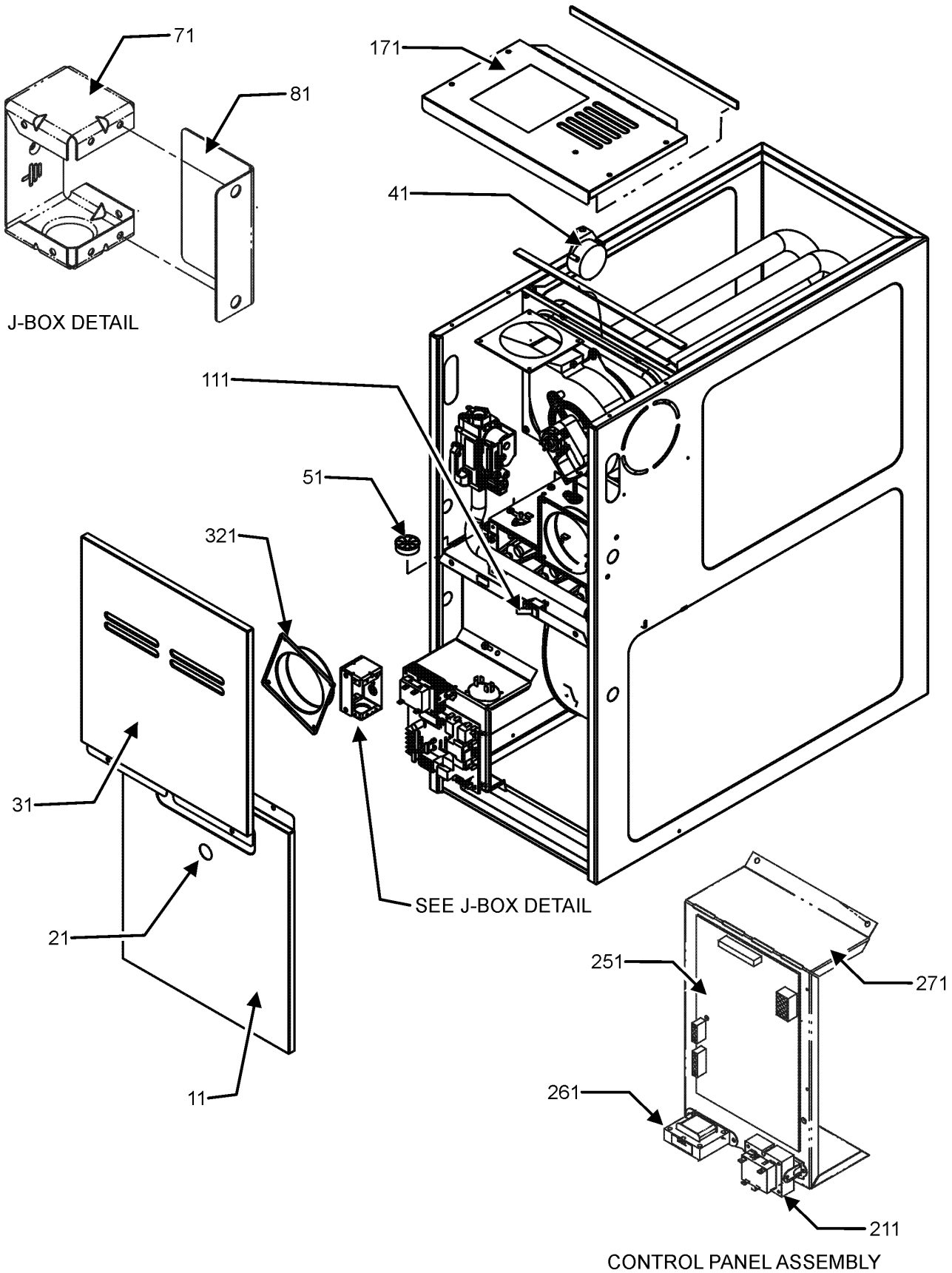
No: Description:

20162904	*PRIMARY LIMIT-TEMPERATURE CONTROL (M7, M8, M9, M10, M11, M12, M13, M14, M17, M18, M19, M20) *Refer to service bulletin SF-054
0130F00049	AIR PRESSURE SWITCH (M5, M6, M15, M16)
0130F00557	DATA, FURNACE PCB (M1, M2)
0130F00346	DATA, FURNACE PCB (M5)
0130F00347	DATA, FURNACE PCB (M6)
0130F00348	DATA, FURNACE PCB (M15)
0130F00349	DATA, FURNACE PCB (M16)
0130F00351	DATA, FURNACE PCB (M22)
0130F00558	DATA, FURNACE PCB (M3, M4)
0130F00559	DATA, FURNACE PCB (M7, M8)
0130F00560	DATA, FURNACE PCB (M9, M10)
0130F00561	DATA, FURNACE PCB (M11, M12)
0130F00563	DATA, FURNACE PCB (M17, M18)
0130F00564	DATA, FURNACE PCB (M19, M20)
0130F00562	DATA, FURNACE PCB (M13, M14)
0130F00350	DATA, FURNACE PCB (M21)
0130F00569	DUAL STAGE PRESSURE SWITCH (M7, M8, M9, M10)
0130F00570	DUAL STAGE PRESSURE SWITCH (M11, M12, M13, M14)
0130F00571	DUAL STAGE PRESSURE SWITCH (M1, M2, M3, M4, M17, M18, M19, M20)
0130F00010	FLAME SENSOR
0151M00027	GAS VALVE
0130M00141	INDUCTOR, 5.9 AMPS (GMPE100-4) (M5, M6, M15, M16, M17, M18, M19, M20, M21, M22)
0130F00038	LIMIT, PRIMARY 120 LT BLUE
0130M00063	LIMIT, PRIMARY, 140, GOLD (M5, M6, M15, M16)
10123529	MANUAL RESET R.O.S. LIMIT (QTY 2)
0131M00270	MOTOR, 1/2 HP, SERIAL ECM (M1, M2, M3, M4, M7, M8, M9, M10, M11, M12, M13, M14)
0131M00271	MOTOR, 3/4 HP, SERIAL ECM (M5, M6, M15, M16, M17, M18, M19, M20, M21, M22)
0131M00781P	MOTOR, VENT 2-STAGE
PCBKF105	PCB CONTROL BOARD
20162903	PRIMARY LIMIT - BLUE (M1, M2, M3, M4)
20162905	PRIMARY LIMIT - YELLOW (M21, M22)
0130F00008	SINI IGNITOR
B1370210	SW, AIR PRESSURE 2 STAGE, PINK (M21, M22)
10690402	SWITCH-INTERLOCK
0130M00140	TRANSFORMER,(120V TO 24V,40VA,

Expanded Model Nomenclature

M1 - DM80VC0603BNAA
M2 - DM80VC0603BNAB
M3 - DM80VC0603BXAA
M4 - DM80VC0603BXAB
M5 - DM80VC0604BNAB
M6 - DM80VC0604BXAB
M7 - DM80VC0803BNAA
M8 - DM80VC0803BNAB
M9 - DM80VC0803BXAA
M10 - DM80VC0803BXAB
M11 - DM80VC0804CNAA
M12 - DM80VC0804CNAB
M13 - DM80VC0804CXAA
M14 - DM80VC0804CXAB
M15 - DM80VC0805CNAB
M16 - DM80VC0805CXAB
M17 - DM80VC0805DNAA
M18 - DM80VC0805DNAB
M19 - DM80VC0805DXAA
M20 - DM80VC0805DXAB
M21 - DM80VC1005CNAB
M22 - DM80VC1005CXAB

CABINET ASSEMBLY

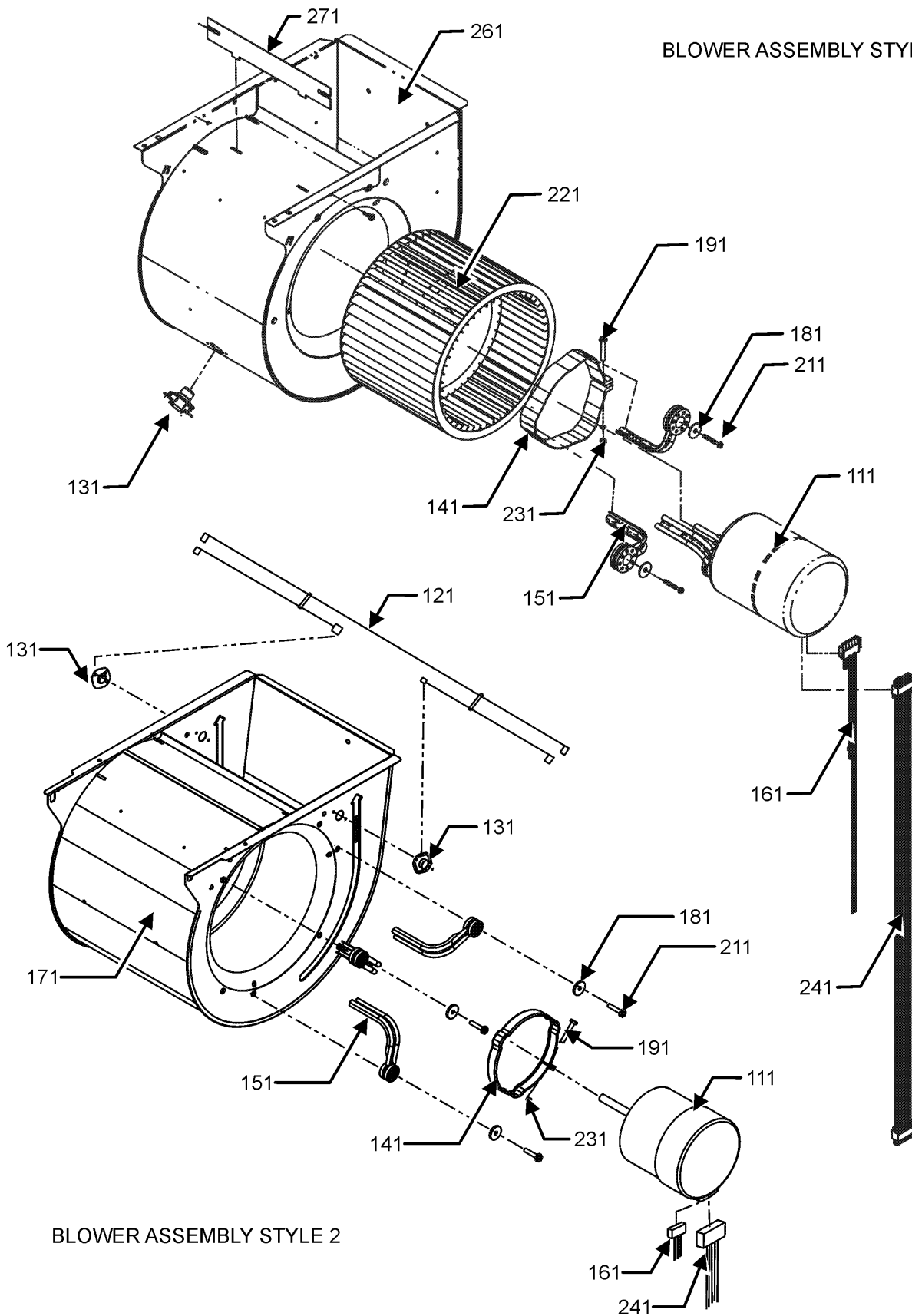


CABINET ASSEMBLY

Ref. Part No:	Ref. Part No:	Description:	Description:
Image 1:		Expanded Model Nomenclature	
11	0121F00123NG	DOOR BLOWER, 17.5" PAINTED (M1, M2, M3, M4, M5, M6, M7, M8, M9, M10)	M1 - DM80VC0603BNAA
11	0121F00124NG	DOOR BLOWER, 21" PAINTED (M11, M12, M13, M14, M15, M16, M21, M22)	M2 - DM80VC0603BNAB
11	0121F00125NG	DOOR BLOWER, 24.5" PAINTED (M17, M18)	M3 - DM80VC0603BXAA
11	0121F00125LG	DOOR, BLOWER, 24.5"-PAINTED (M19, M20)	M4 - DM80VC0603BXAB
21	B1392139	VIEW PORT BUSHING-BLOWER DOOR	M5 - DM80VC0604BNAB
31	0121F00119NG	DOOR CTRL ACCESS, 17.5" (M1, M2, M3, M4, M5, M6, M7, M8, M9, M10)	M6 - DM80VC0604BXAB
31	0121F00120NG	DOOR CTRL ACCESS, 21" PAINTED (M11, M12, M13, M14, M15, M16, M21, M22)	M7 - DM80VC0803BNAA
31	0121F00121NG	DOOR CTRL ACCESS, 24.5 PAINTED (M17, M18)	M8 - DM80VC0803BNAB
31	0121F00121LG	DOOR CTRL ACCESS, 24.5"PAINTED (M19, M20)	M9 - DM80VC0803BXAA
41	0130F00049	AIR PRESSURE SWITCH (M5, M6, M15, M16)	M10 - DM80VC0803BXAB
41	0130F00569	DUAL STAGE PRESSURE SWITCH (M7, M8, M9, M10)	M11 - DM80VC0804CNAA
41	0130F00570	DUAL STAGE PRESSURE SWITCH (M11, M12, M13, M14)	M12 - DM80VC0804CNAB
41	0130F00571	DUAL STAGE PRESSURE SWITCH (M1, M2, M3, M4, M17, M18, M19, M20)	M13 - DM80VC0804CXAA
41	B1370210	SW, AIR PRESSURE 2 STAGE, PINK (M21, M22)	M14 - DM80VC0804CXAB
51	B1392147	UNIVERSAL BUSHING WITH SLICE	M15 - DM80VC0805CNAB
71	4014502	J-BOX	M16 - DM80VC0805CXAB
81	4015502	COVER, J-BOX	M17 - DM80VC0805DNAA
111	10690402	SWITCH-INTERLOCK	M18 - DM80VC0805DNAB
171	0121F00142DG	TOP, FURNACE 17.5"-PAINTED (M1, M2, M3, M4, M5, M6, M7, M8, M9, M10)	M19 - DM80VC0805DXAA
171	0121F00143DG	TOP, FURNACE 21"-PAINTED (M11, M12, M13, M14, M15, M16, M21, M22)	M20 - DM80VC0805DXAB
171	0121F00463DG	TOP, FURNACE 24.5" PAINTED (M17, M18, M19, M20)	M21 - DM80VC1005CNAB
211	0130M00140	TRANSFORMER,(120V TO 24V,40VA,	M22 - DM80VC1005CXAB
251	PCBKF105	PCB CONTROL BOARD	
261	0130M00141	INDUCTOR, 5.9 AMPS (GMPE100-4) (M5, M6, M15, M16, M17, M18, M19, M20, M21, M22)	
271	0121F00218	PANEL, CONTROL MOUNTING	
321	4023500	CHIMNEY TRANSITION TOP	

BLOWER ASSEMBLY

BLOWER ASSEMBLY STYLE 1

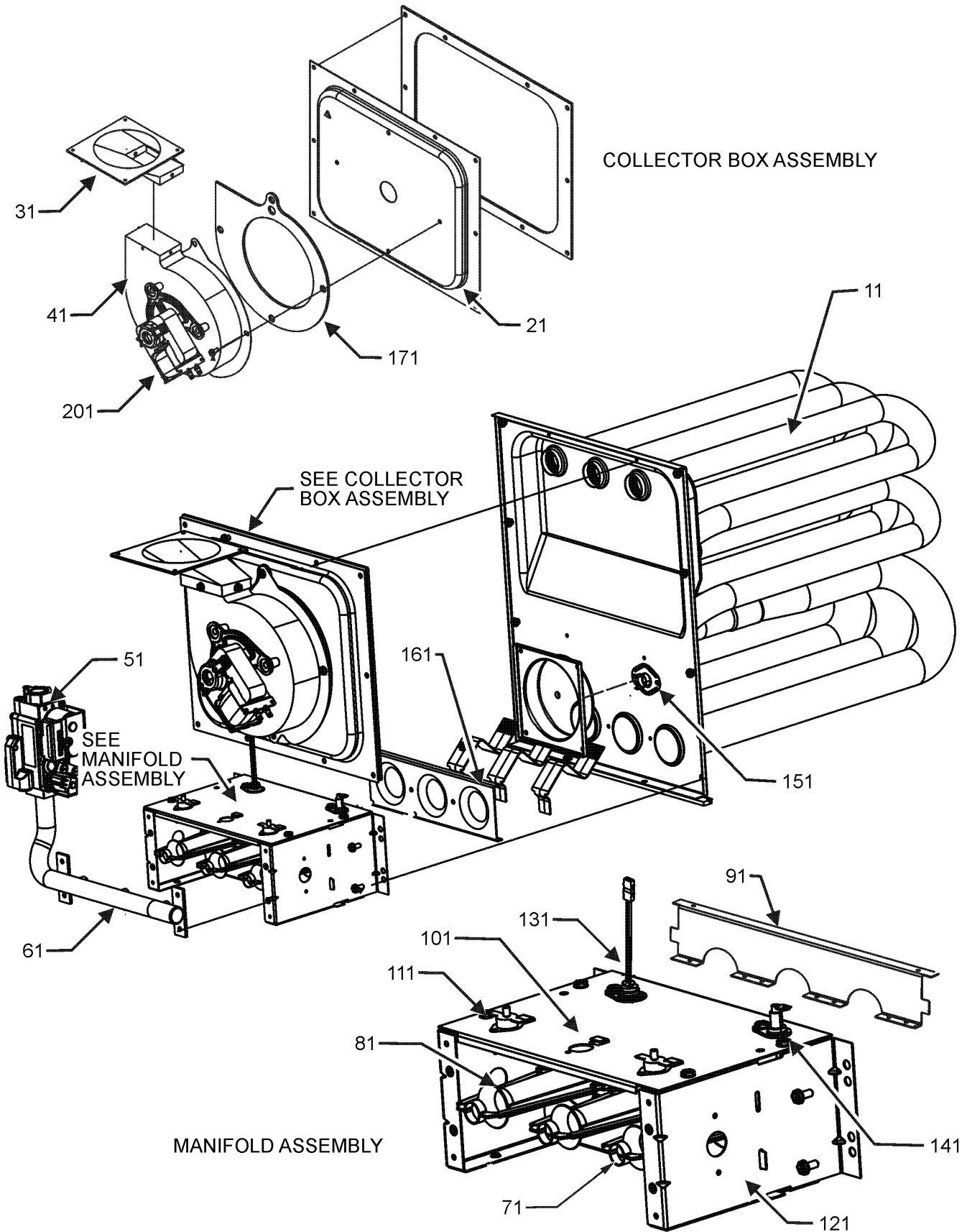


BLOWER ASSEMBLY STYLE 2

BLOWER ASSEMBLY

Ref. Part No: No:	Description:	Ref. Part No: No:	Description:
<i>Image 1:</i>		Expanded Model Nomenclature	
111	0131M00270	MOTOR, 1/2 HP, SERIAL ECM (M1, M2, M3, M4, M7, M8, M9, M10, M11, M12, M13, M14)	M1 - DM80VC0603BNAA
111	0131M00271	MOTOR, 3/4 HP, SERIAL ECM (M5, M6, M15, M16, M17, M18, M19, M20, M21, M22)	M2 - DM80VC0603BNAB
121	0259F00024	WIRE HARNESS-BLOWER (M11, M12, M13, M14, M17, M18, M19, M20)	M3 - DM80VC0603BXAA
131	0130F00038	LIMIT, PRIMARY 120 LT BLUE	M4 - DM80VC0603BXAB
141	0121M00038	MOTOR MOUNT BAND (M1, M2, M3, M4, M5, M6, M7, M8, M9, M10)	M5 - DM80VC0604BNAB
141	0121M00039	MOTOR MOUNT BAND (HEAVY DUTY) (M11, M12, M13, M14, M15, M16, M17, M18, M19, M20, M21, M22)	M6 - DM80VC0604BXAB
151	B1376853	MOTOR MOUNT ARM (M1, M2, M3, M4, M5, M6, M7, M8, M9, M10)	M7 - DM80VC0803BNAA
151	B1376863	MOTOR MOUNT ARM (HEAVY DUTY) (M11, M12, M13, M14, M15, M16, M17, M18, M19, M20, M21, M22)	M8 - DM80VC0803BNAB
161	0259F00049	HARNESS-POWER	M9 - DM80VC0803BXAA
171	0271F00303	BLOWER SHELL & WHEEL (M11, M12, M13, M14, M17, M18, M19, M20)	M10 - DM80VC0803BXAB
181	B1392918	WASHER, FLAT 1/4 ID X 1 OD (QTY 3)	M11 - DM80VC0804CNAA
191	0163M00320	HEX HEAD ALL THREAD TAP BOLT	M12 - DM80VC0804CNAB
211	M0250565	SCREW-TC 1.25" (QTY 3)	M13 - DM80VC0804CXAA
221	B1368047	BLOWER WHEEL (10 X 10) (M15, M16, M21, M22)	M14 - DM80VC0804CXAB
221	0150M00043	WHEEL, BLOWER (10X8) (M1, M2, M3, M4, M7, M8, M9, M10)	M15 - DM80VC0805CNAB
221	B1368016	WHEEL, BLOWER, 10X8 (M5, M6)	M16 - DM80VC0805CXAB
231	B1393800	LOCKNUT, NYLON INSERT 1/4 20	M17 - DM80VC0805DNAA
241	0259M00008	WIRE HARNESS	M18 - DM80VC0805DNAB
261	0271F00111	BLOWER SHELL ASSY (M1, M2, M3, M4, M5, M6, M7, M8, M9, M10)	M19 - DM80VC0805DXAA
261	0271F00112	BLOWER SHELL ASSY (M15, M16, M21, M22)	M20 - DM80VC0805DXAB
271	764741	BLWR BLK-OFF,10X10 (M15, M16, M21, M22)	M21 - DM80VC1005CNAB
271	764740	BLWR BLK-OFF,10X8 (M1, M2, M3, M4, M5, M6, M7, M8, M9, M10)	M22 - DM80VC1005CXAB
NS	0130F00346	DATA, FURNACE PCB (M5)	
NS	0130F00347	DATA, FURNACE PCB (M6)	
NS	0130F00348	DATA, FURNACE PCB (M15)	
NS	0130F00349	DATA, FURNACE PCB (M16)	
NS	0130F00350	DATA, FURNACE PCB (M21)	
NS	0130F00351	DATA, FURNACE PCB (M22)	
NS	0130F00557	DATA, FURNACE PCB (M1, M2)	
NS	0130F00558	DATA, FURNACE PCB (M3, M4)	
NS	0130F00559	DATA, FURNACE PCB (M7, M8)	
NS	0130F00560	DATA, FURNACE PCB (M9, M10)	
NS	0130F00561	DATA, FURNACE PCB (M11, M12)	
NS	0130F00562	DATA, FURNACE PCB (M13, M14)	
NS	0130F00563	DATA, FURNACE PCB (M17, M18)	
NS	0130F00564	DATA, FURNACE PCB (M19, M20)	

HEAT EXCHANGE ASSEMBLY



HEAT EXCHANGE ASSEMBLY

Ref. Part No: No:	Description:	Ref. Part No: No:	Description:																						
Image 1:		Image 1:																							
11	0270F00933 HEAT EXCHANGER ASSY (M1, M2, M3, M4, M5, M6)	NS	0259F00276 WIRE HARNESS ASSY (M2, M4, M5, M6, M8, M10, M12, M14, M15, M16, M18, M20, M21, M22)																						
11	0270F00934 HEAT EXCHANGER ASSY (M7, M8, M9, M10)	Expanded Model Nomenclature																							
11	0270F00935 HEAT EXCHANGER ASSY (M11, M12, M13, M14, M15, M16)	<table border="1"> <tr><td>M1 - DM80VC0603BNAA</td></tr> <tr><td>M2 - DM80VC0603BNAB</td></tr> <tr><td>M3 - DM80VC0603BXAA</td></tr> <tr><td>M4 - DM80VC0603BXAB</td></tr> <tr><td>M5 - DM80VC0604BNAB</td></tr> <tr><td>M6 - DM80VC0604BXAB</td></tr> <tr><td>M7 - DM80VC0803BNAA</td></tr> <tr><td>M8 - DM80VC0803BNAB</td></tr> <tr><td>M9 - DM80VC0803BXAA</td></tr> <tr><td>M10 - DM80VC0803BXAB</td></tr> <tr><td>M11 - DM80VC0804CNAA</td></tr> <tr><td>M12 - DM80VC0804CNAB</td></tr> <tr><td>M13 - DM80VC0804CXAA</td></tr> <tr><td>M14 - DM80VC0804CXAB</td></tr> <tr><td>M15 - DM80VC0805CNAB</td></tr> <tr><td>M16 - DM80VC0805CXAB</td></tr> <tr><td>M17 - DM80VC0805DNAA</td></tr> <tr><td>M18 - DM80VC0805DNAB</td></tr> <tr><td>M19 - DM80VC0805DXAA</td></tr> <tr><td>M20 - DM80VC0805DXAB</td></tr> <tr><td>M21 - DM80VC1005CNAB</td></tr> <tr><td>M22 - DM80VC1005CXAB</td></tr> </table>		M1 - DM80VC0603BNAA	M2 - DM80VC0603BNAB	M3 - DM80VC0603BXAA	M4 - DM80VC0603BXAB	M5 - DM80VC0604BNAB	M6 - DM80VC0604BXAB	M7 - DM80VC0803BNAA	M8 - DM80VC0803BNAB	M9 - DM80VC0803BXAA	M10 - DM80VC0803BXAB	M11 - DM80VC0804CNAA	M12 - DM80VC0804CNAB	M13 - DM80VC0804CXAA	M14 - DM80VC0804CXAB	M15 - DM80VC0805CNAB	M16 - DM80VC0805CXAB	M17 - DM80VC0805DNAA	M18 - DM80VC0805DNAB	M19 - DM80VC0805DXAA	M20 - DM80VC0805DXAB	M21 - DM80VC1005CNAB	M22 - DM80VC1005CXAB
M1 - DM80VC0603BNAA																									
M2 - DM80VC0603BNAB																									
M3 - DM80VC0603BXAA																									
M4 - DM80VC0603BXAB																									
M5 - DM80VC0604BNAB																									
M6 - DM80VC0604BXAB																									
M7 - DM80VC0803BNAA																									
M8 - DM80VC0803BNAB																									
M9 - DM80VC0803BXAA																									
M10 - DM80VC0803BXAB																									
M11 - DM80VC0804CNAA																									
M12 - DM80VC0804CNAB																									
M13 - DM80VC0804CXAA																									
M14 - DM80VC0804CXAB																									
M15 - DM80VC0805CNAB																									
M16 - DM80VC0805CXAB																									
M17 - DM80VC0805DNAA																									
M18 - DM80VC0805DNAB																									
M19 - DM80VC0805DXAA																									
M20 - DM80VC0805DXAB																									
M21 - DM80VC1005CNAB																									
M22 - DM80VC1005CXAB																									
11	0270F00936 HEAT EXCHANGER ASSY (M21, M22)																								
11	0270F03017 HEAT EXCHANGER ASSY (M17, M18, M19, M20)																								
21	0121F00328 17.5" COLLECTOR BOX 1.250" DIA (M1, M2, M3, M4)																								
21	0121F00332 17.5" COLLECTOR BOX 1.375" DIA (M5, M6)																								
21	0121F00334 21" COLLECTOR BOX 1.625" DIA (M17, M18, M19, M20)																								
21	0121F00333 21" COLLECTOR BOX 1.75" DIA (M21, M22)																								
21	0121F00336 21" FLUE COLLECTOR BOX 1.50" (M15, M16)																								
21	0121F00655 COLLECTOR BOX 17.5" 1.437 DIA (M7, M8, M9, M10)																								
21	0121F00659 COLLECTOR BOX 21" 1.40 DIA (M11, M12, M13, M14)																								
31	0128F00006 CHIMNEY TRANSITION BOTTOM																								
41	0131M00781P MOTOR, VENT 2-STAGE																								
51	0151M00027 GAS VALVE																								
61	0120F00007 MANIFOLD (M1, M2, M3, M4, M5, M6)																								
61	0120F00008 MANIFOLD (M7, M8, M9, M10, M11, M12, M13, M14, M15, M16, M17, M18, M19, M20)																								
61	0120F00009 MANIFOLD (M21, M22)																								
71	10716005 ORIFICE, #45 DRILL (QTY 3)																								
81	B4022700 INSHOT BURNER ASSY 3" (QTY 3)																								
91	0121F00168 BURNER RACK, 3 CELL (M1, M2, M3, M4, M5, M6)																								
91	0121F00169 BURNER RACK, 4 CELL (M7, M8, M9, M10, M11, M12, M13, M14, M15, M16, M17, M18, M19, M20)																								
91	0121F00170 BURNER RACK, 5 CELL (M21, M22)																								
101	0121F00163 TOP, BURNER BOX 3 CELL (M1, M2, M3, M4, M5, M6)																								
101	0121F00164 TOP, BURNER BOX 4 CELL (M7, M8, M9, M10, M11, M12, M13, M14, M15, M16, M17, M18, M19, M20)																								
101	0121F00165 TOP, BURNER BOX 5 CELL (M21, M22)																								
111	10123529 MANUAL RESET R.O.S. LIMIT (QTY 2)																								
121	0121F00146 BURNER BOX SIDE (QTY 2)																								
131	0130F00008 SINI IGNITOR																								
141	0130F00010 FLAME SENSOR																								
151	20162904 *PRIMARY LIMIT-TEMPERATURE CONTROL (M7, M8, M9, M10, M11, M12, M13, M14, M17, M18, M19, M20) *Refer to service bulletin SF-054																								
151	0130M00063 LIMIT, PRIMARY, 140, GOLD (M5, M6, M15, M16)																								
151	20162903 PRIMARY LIMIT - BLUE (M1, M2, M3, M4)																								
151	20162905 PRIMARY LIMIT - YELLOW (M21, M22)																								
161	4028001 ORIFICE PLATE, 3CELL (M1, M2, M3, M4, M5, M6)																								
161	4028002 ORIFICE PLATE, 4CELL (M7, M8, M9, M10, M11, M12, M13, M14, M15, M16, M17, M18, M19, M20)																								
161	4028003 ORIFICE PLATE, 5CELL (M21, M22)																								
171	0154F00004 GASKET-17.5 INCH (M1, M2, M3, M4, M5, M6, M7, M8, M9, M10)																								
171	0154F00005 GASKET-21 INCH (M11, M12, M13, M14, M15, M16, M17, M18, M19, M20, M21, M22)																								
201	DY6.186.070 VENT MOTOR CAPACITOR																								
NS	0259M00005 ADAPTER HARNESS																								
NS	0259F00062 INDUCER HARNESS ASSY																								
NS	0259M00008 WIRE HARNESS																								
NS	0259F00063 WIRE HARNESS ASSY																								
NS	0259F00081 WIRE HARNESS ASSY (M1, M3, M7, M9, M11, M13, M17, M19)																								