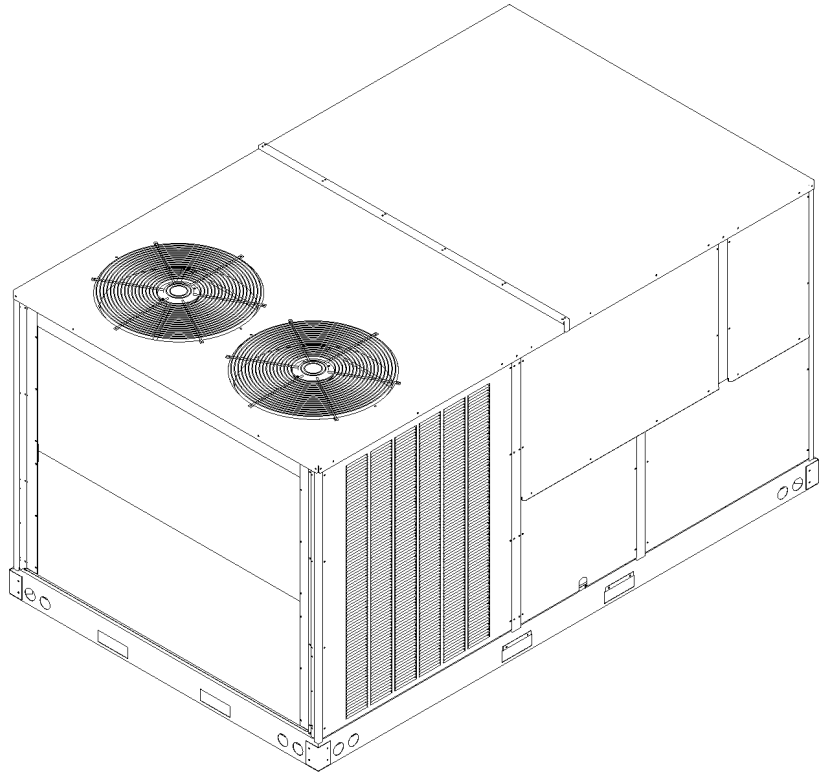


Commercial 8.5 Ton 2-Speed Package Heat Pump Unit

DCH1020163VHXXAB
DCH1020164VWDDAB
DCH102XXX3V1DDAB
DCH102XXX3VHDDAB
DCH102XXX3VWXDA
DCH102XXX3VXXXAA
DCH102XXX3VXXXAB
DCH102XXX4VXXXAA
DCH102XXX4VXXXAB
DCH102XXX7VXXXAA
DCH102XXX7VXXXAB



This manual is to be used by qualified technicians only.

This manual replaces RP-D1058C.

© 2014, 2016 - 2018 **DAIKIN COMPANY, L.P.** ♦ 5151 San Felipe St., Suite 500 ♦ Houston, TX 77056

Important Information

Index

Functional Parts List	3
Illustration and Parts	4 - 17

Views shown are for parts illustrations only, not servicing procedures.

Text Codes:

AR - As Required

NA - Not Available

NS - Not Shown

00000000 - See Note

QTY - Quantity Example (QTY 3) (If Quantity not shown, Quantity = 1)

M - Model Example (M1) (If M Code not shown, then part is used on all Models)

Expanded Model Nomenclature:

Example
M1 - Model#1
M2 - Model#2
M3 - Model#3

Daikin Company, L.P. is not responsible for personal injury or property damage resulting from improper service. Review all service information before beginning repairs.

Warranty service must be performed by an authorized technician, using authorized factory parts. If service is required after the warranty expires, Daikin Company, L.P. also recommends contacting an authorized technician and using authorized factory parts.

Daikin Company, L.P. reserves the right to discontinue, or change at any time, specifications or designs without notice or without incurring obligations.

For assistance within the U.S.A. contact:

Equipment Support
Daikin North America, LLC
19001 Kermier Road
Waller, Texas 77484
855-770-5678-Telephone
713-863-2382-Facsimile

For assistance outside the U.S.A. contact:

International Division
Daikin North America, LLC
19001 Kermier Road
Waller, Texas 77484
713-861-2500-Telephone
713-863-2382-Facsimile

Functional Parts

Part

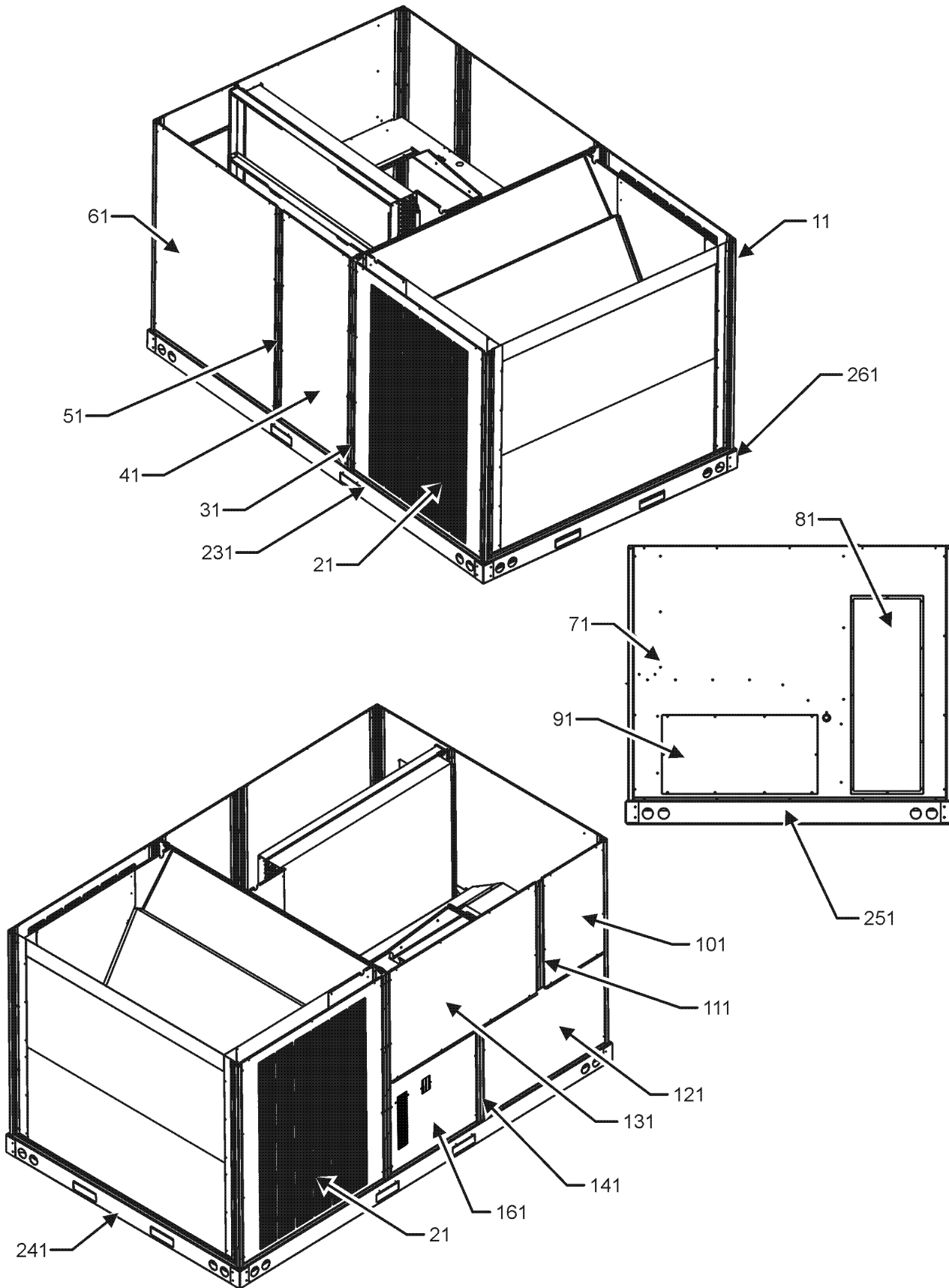
No: Description:

0130M00242	24V RELAY (QTY 3)
CAP100000370LA	CAPACITOR 10/370V (M1, M2, M4, M5, M7, M9, M10, M11)
CAP030000440LA	CAPACITOR 3/440V (M8)
CAP050000370LA	CAPACITOR 5/370V (M3)
CAP075000370LA	CAPACITOR 7.5/370V (M6)
ZP44K5ETF5130	COMPRESSOR 44000, 200/230/60/3 (M1, M2, M3, M4, M5, M10)
ZP44K5ETFD130	COMPRESSOR 44000, 460/60/3 (M6, M7, M11)
ZP44K5ETFE130	COMPRESSOR 44000, 575/60/3 (M8, M9)
0131M00432	COND MOTOR 380/460/50/60 CYCLE (M6)
0131M00431	COND MOTOR 575V (M8)
CONT3P025024V	CONTACTOR 25 AMP, 3P, 24V (QTY 4)
CONT2P040024V	CONTACTOR 40 AMP, 2P, 24V
0130M00102	CONTROL, DEFROST
0130M00103	CONTROL, DEFROST
0130M00031	CUT-OUT SWITCH, HIGH PRESSURE
0130M00030	CUT-OUT SWITCH, HIGH PRESSURE
0130L00003	CUT-OUT SWITCH, LOW PRESSURE (QTY 2)
PCBDM101	DEFROST CONTROL BOARD
PCBFM103	ELECTRONIC BLOWER TIME DELAY
0131L00041	MOTOR 2 HP BELT DRIVE 208-230V (M1, M2, M3, M4, M5, M10)
0131L00043	MOTOR 2HP BELT DRIVE 460V (M6, M7, M11)
0131L00042	MOTOR 2HP BELT DRIVE 575V (M8, M9)
0131M00842	MOTOR, 1/3 HP, OD (M9)
0131M00841	MOTOR, 1/3 HP, OD (M7, M11)
0131M00840	MOTOR, 1/3 HP, OD (M1, M2, M4, M5, M10)
0131M00847	MOTOR, 1/4 HP, 1 SP, 6 PL (M3)
10135604	RELAY (QTY 4)
0151R00071	REVERSING VALVE
B1225022	SOLENOID COIL
0130M00038	TERMINAL BOARD
0130M00144	TRANSFORMER (M1, M2, M3, M4, M5, M10)
0130M00145	TRANSFORMER 480V to 24V, 75VA (M6, M7, M11)
0130M00148	TRANSFORMER 575V to 24V, 75VA (M8, M9)

Expanded Model Nomenclature

M1 - DCH102XXX3VHDDAB
M2 - DCH102XXX3VWXDAB
M3 - DCH102XXX3VXXXAA
M4 - DCH102XXX3VXXXAB
M5 - DCH102XXX3V1DDAB
M6 - DCH102XXX4VXXXAA
M7 - DCH102XXX4VXXXAB
M8 - DCH102XXX7VXXXAA
M9 - DCH102XXX7VXXXAB
M10 - DCH1020163VHXXAB
M11 - DCH1020164VWDDAB

Cabinet Assembly



Cabinet Assembly

Ref. Part No:	Part No:	Description:	Ref. Part No:	Part No:	Description:
---------------	----------	--------------	---------------	----------	--------------

Image 1:

11	0121L00065RFNG	CORNER POST (QTY 3)
11	0121L01407RFNG	CORNER POST (M1, M5, M11)
21	0121L00511NG	LOUVERED SIDE PANEL (QTY 2)
31	0121L00738RFNG	ROLL FORM SIDE POST (M2, M3, M4, M6, M7, M8, M9, M10)
31	0121L01400RFNG	SIDE POST (M1, M5, M11)
41	0121L00737NG	FILTER DOOR
51	0121L00739RFNG	FILTER DOOR POST (M2, M3, M4, M6, M7, M8, M9, M10)
51	0121L01432RFNG	FILTER DOOR POST (M1, M5, M11)
61	0121L00510NG	ECONOMIZER DOOR
71	0121L01364NG	DUCT PANEL (M3, M4, M6, M7, M8, M9)
71	0121L01365NG	DUCT PANEL (M1, M2, M5, M10, M11)
81	0121L00082NG	RETURN DUCT COVER
91	0121L00099NG	SUPPLY DUCT COVER
101	0121L00974NG	CONTROL DOOR
111	0121L02517RFNG	RF, PAINTED CNTL POST HINGED (M1, M5, M11)
111	0121L02303RFNG	RF, PAINTED CONTROL POST (M2, M3, M4, M6, M7, M8, M9, M10)
121	0121L00767NG	ELECTRIC HEAT DOOR
131	0121L00763NG	BLOWER DOOR
141	0121L00765RFNG	BURNER BOX POST
161	0121L00828NG	BURNER AREA DOOR
231	0121L01099RF	RAIL, BASE SIDES RF (QTY 2)
241	0121L00834RF	RAIL-BASE COND END
251	0121L00071RF	RAIL, BASE DUCT END
261	0121G00301	RAIL CORNER BRACKET (QTY 4)
NS	0121L00055	BRACKET-FORK BOARD (QTY 4)
NS	0121L00727	ECONOMIZER COVER (M2, M11)
NS	0141L00006X	FORK BOARD (QTY 2)
NS	0164L00009	GASKET-RUBBER, CPOST (QTY 3)
NS	0164L00011	GASKET-RUBBER, SIDE POST (QTY 4)

Expanded Model Nomenclature

M1 - DCH102XXX3VHDDAB
M2 - DCH102XXX3VWXDAB
M3 - DCH102XXX3VXXXAA
M4 - DCH102XXX3VXXXAB
M5 - DCH102XXX3V1DDAB
M6 - DCH102XXX4VXXXAA
M7 - DCH102XXX4VXXXAB
M8 - DCH102XXX7VXXXAA
M9 - DCH102XXX7VXXXAB
M10 - DCH1020163VHXXAB
M11 - DCH1020164VWDDAB

Top Panel and Tubing Assembly

IMAGE 1

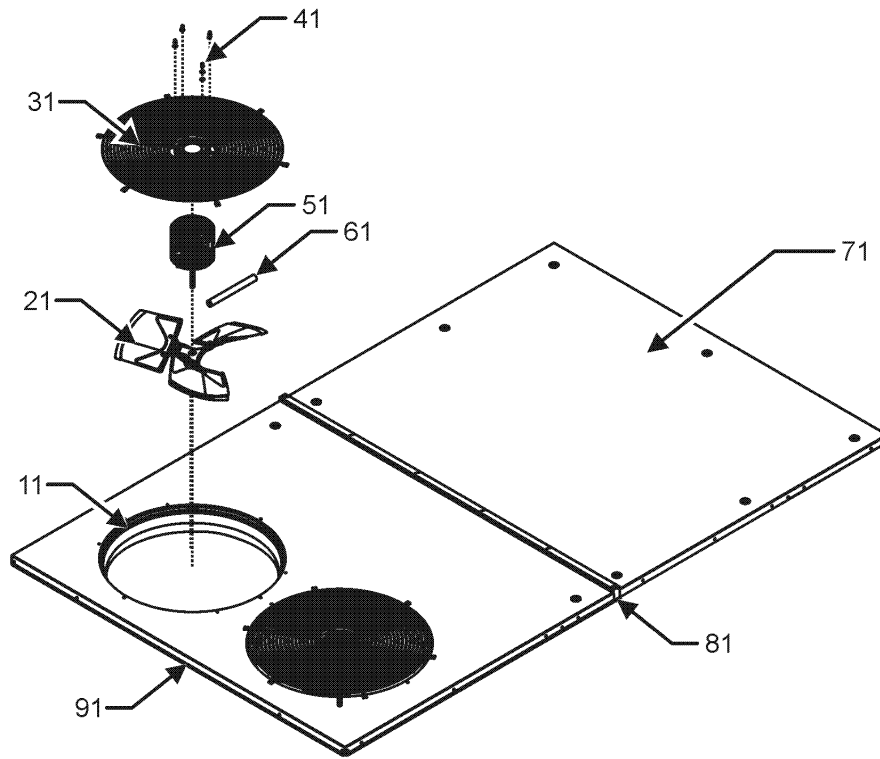
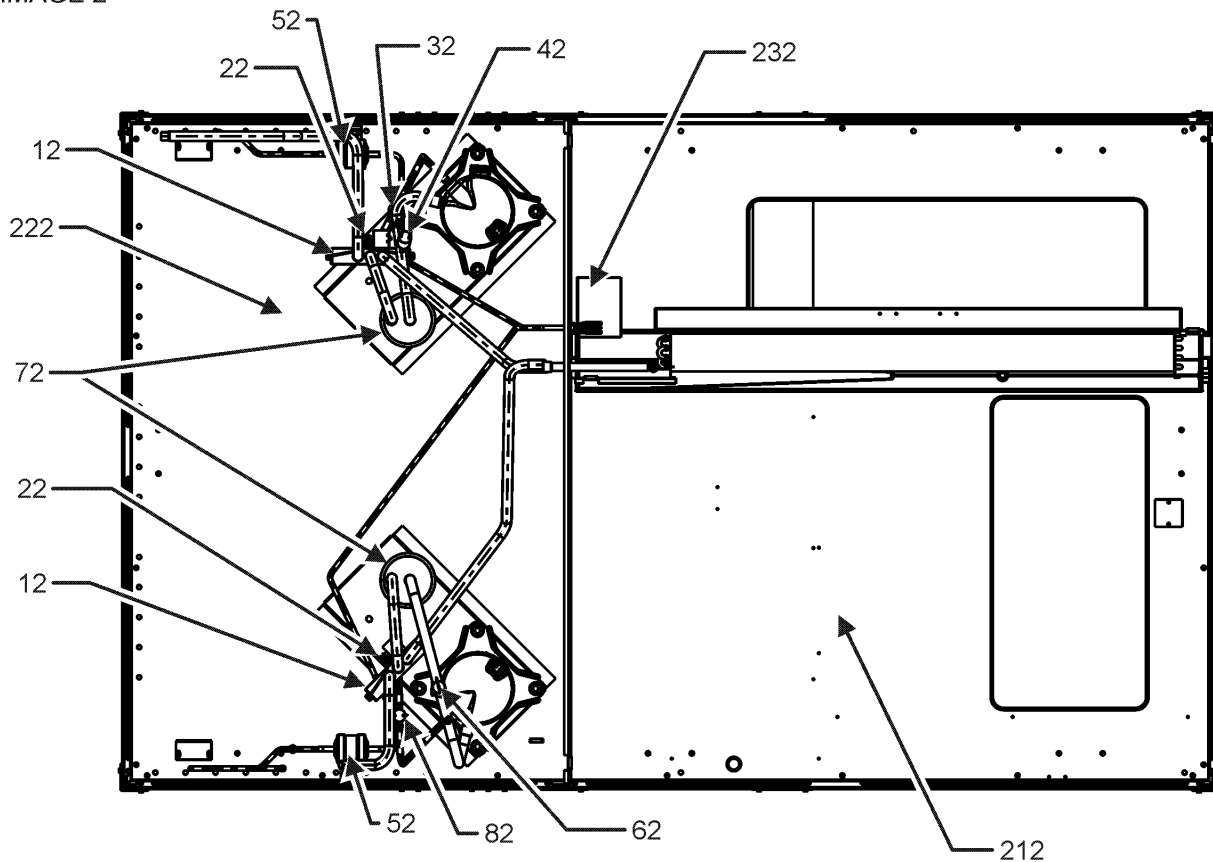


IMAGE 2



Top Panel and Tubing Assembly

Ref. Part No:	Part No:	Description:	Ref. Part No:	Part No:	Description:
---------------	----------	--------------	---------------	----------	--------------

Image 1:

11	0161L00000	VENTURI RING 22" (QTY 2)
21	0150G00001	FAN BLADE (M3, M6, M8)
21	10625733	FAN BLADE 22" ALUM CCW (M1, M2, M4, M5, M7, M9, M10, M11)
31	0152G00000	FAN GRILLE, RAISED (QTY 2)
41	0163M00006P	ACORN NUT 5/16 HEX BLACK (QTY 8)
51	0131M00432	COND MOTOR 380/460/50/60 CYCLE (M6)
51	0131M00431	COND MOTOR 575V (M8)
51	0131M00840	MOTOR, 1/3 HP, OD (M1, M2, M4, M5, M10)
51	0131M00841	MOTOR, 1/3 HP, OD (M7, M11)
51	0131M00842	MOTOR, 1/3 HP, OD (M9)
51	0131M00847	MOTOR, 1/4 HP, 1 SP, 6 PL (M3)
61	0163M00386	CONDUIT-FLEXIBLE (QTY 2)
71	0121L00497NG	TOP INDOOR
81	20455902	SPLICE GASKET .50 X .25 (QTY 5)
91	0121L01105NG	TOP OUTDOOR
NS	0163M00175	CAP WITH O-RING (QTY 4)
NS	0259L00026	COND MOTOR HARNESS 460V (M6)
NS	0259L00028	COND MOTOR HARNESS 460V (M6)
NS	0259L00511	HARNESS COND MOTOR (M1, M2, M3, M4, M5, M7, M8, M9, M10, M11)
NS	0259L00512	HARNESS COND MOTOR (M1, M2, M3, M4, M5, M7, M8, M9, M10, M11)
NS	0163M00004	SCREW #10X3/4", BLACK (QTY 20)
NS	0163M00005P	WASHER, BLACK (.50 OD .218ID) (QTY 8)

Image 2:

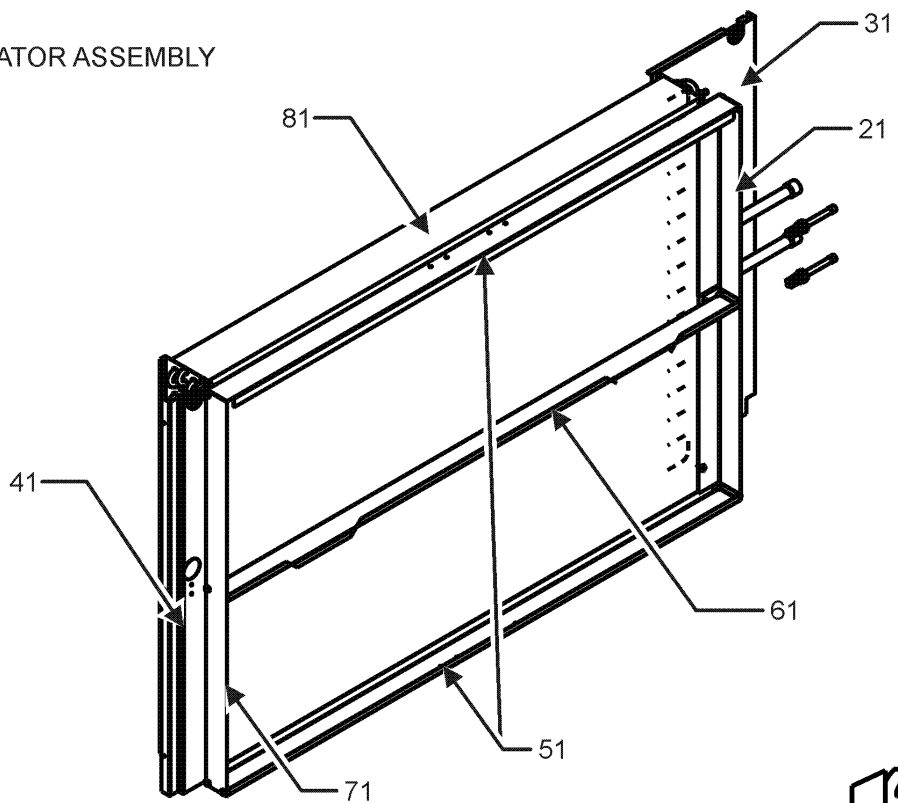
12	0151R00071	REVERSING VALVE
22	B1225022	SOLENOID COIL
32	0130M00031	CUT-OUT SWITCH, HIGH PRESSURE
42	0130L00003	CUT-OUT SWITCH, LOW PRESSURE
52	B1219204	BI-FLOW FILTER DRIER
62	0130L00003	CUT-OUT SWITCH, LOW PRESSURE
72	B1226207	ACCUMULATOR .875 (QTY 2)
82	0130M00030	CUT-OUT SWITCH, HIGH PRESSURE
212	0121L02129	BASEPAN, OUTDOOR
222	0121L00944	BASE PAN-INDOOR
232	0121L00359	SHIELD-EVAPORATOR DRIP
NS	B1373315	ACCESS FITTING (QTY 4)

Expanded Model Nomenclature

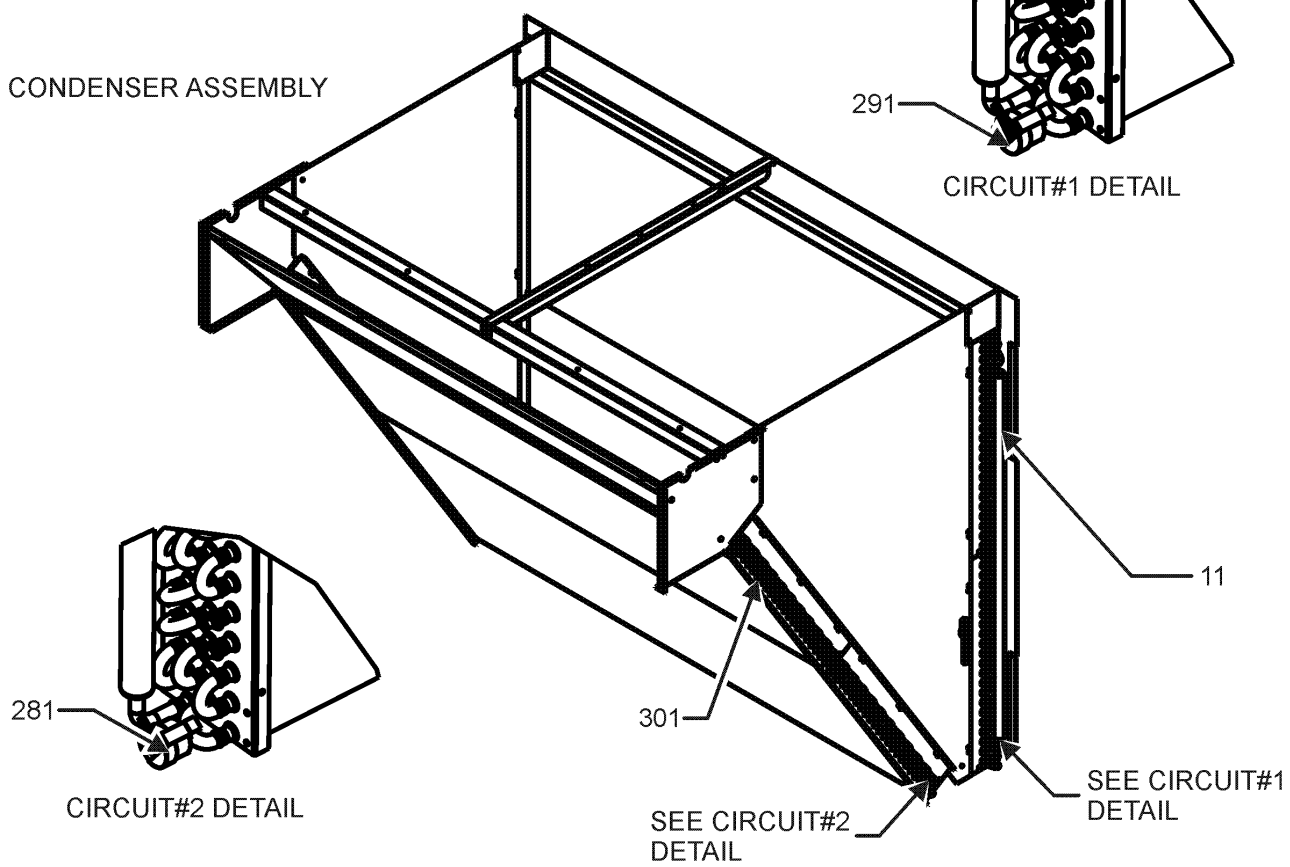
M1 - DCH102XXX3VHDDAB
M2 - DCH102XXX3VWXDAB
M3 - DCH102XXX3VXXXAA
M4 - DCH102XXX3VXXXAB
M5 - DCH102XXX3V1DDAB
M6 - DCH102XXX4VXXXAA
M7 - DCH102XXX4VXXXAB
M8 - DCH102XXX7VXXXAA
M9 - DCH102XXX7VXXXAB
M10 - DCH1020163VHXXAB
M11 - DCH1020164VWDDAB

Condenser and Evaporator Assembly

EVAPORATOR ASSEMBLY



CONDENSER ASSEMBLY



Condenser and Evaporator Assembly

Ref. Part No: No:	Description:	Ref. Part No: No:	Description:
-------------------	--------------	-------------------	--------------

Image 1:

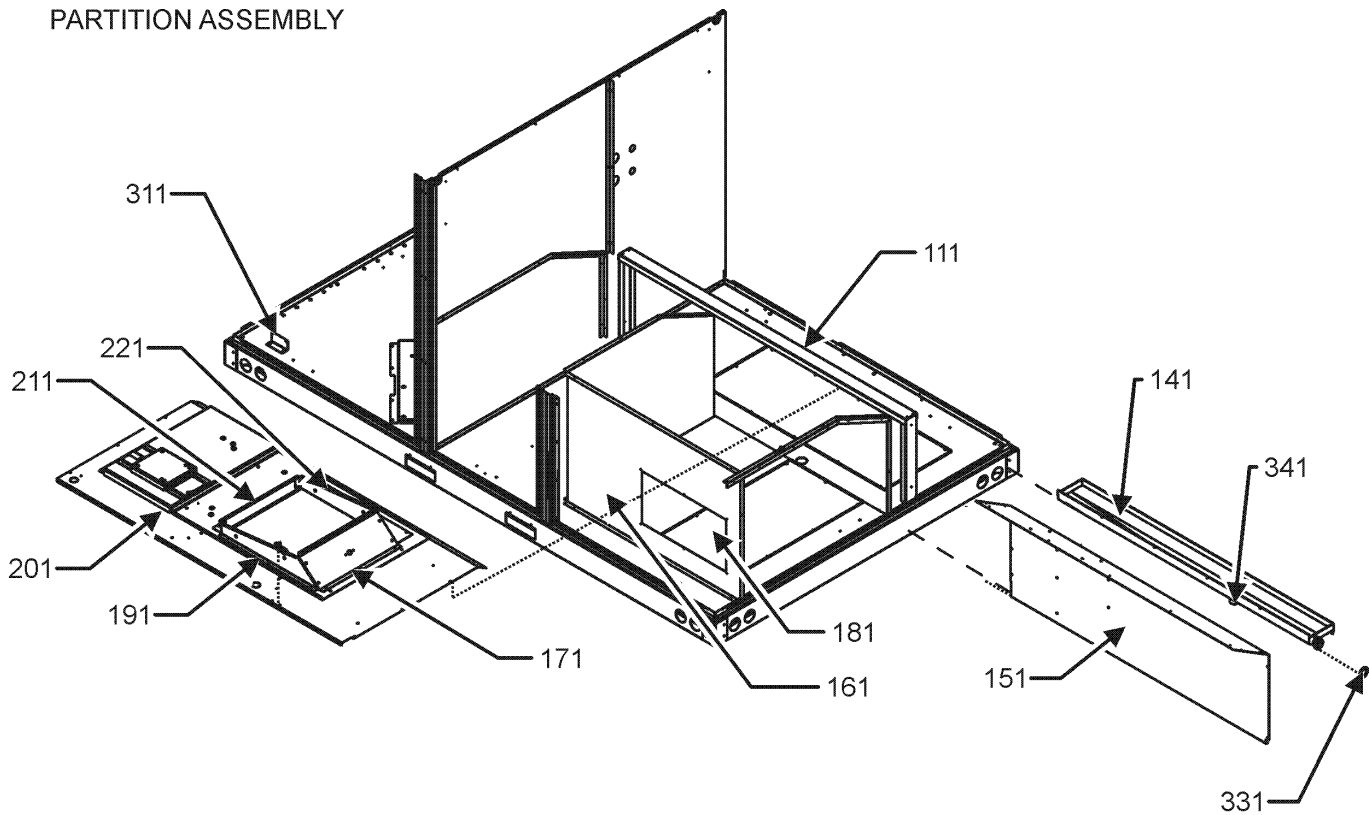
11	0201L00096	TUBING ASSY, COND COIL C1
21	0121L00650	FILTER ANGLE-VERTICAL (RETURN SIDE)
31	0121L00210	EVAP EXTENSION-RETURN SIDE
41	0121L00843	EVAP EXTENSION-HAIRPIN SIDE
51	0121L00649	FILTER ANGLE - HORIZONTAL (QTY 2)
61	0121L01257	FILTER ANGLE - VERTICAL
71	0121L00358	FILTER ANGLE-VERTICAL (HAIRPIN SIDE)
81	0202L00050	EVAP COIL TUBING ASSY (M3, M6, M8)
81	0202L00190	EVAP COIL TUBING ASSY (M1, M2, M4, M5, M7, M9, M10, M11)
171	0121L00090	BLOWER TRANSITION, RH END
191	0121L00092	BLOWER TRANSITION, FRONT
281	0130M00102	CONTROL, DEFROST
291	0130M00103	CONTROL, DEFROST
301	0201L00097	TUBING ASSY, COND COIL C2
NS	0160L00175	AIR FILTER 16 X 24 X 2 (QTY 4)

Expanded Model Nomenclature

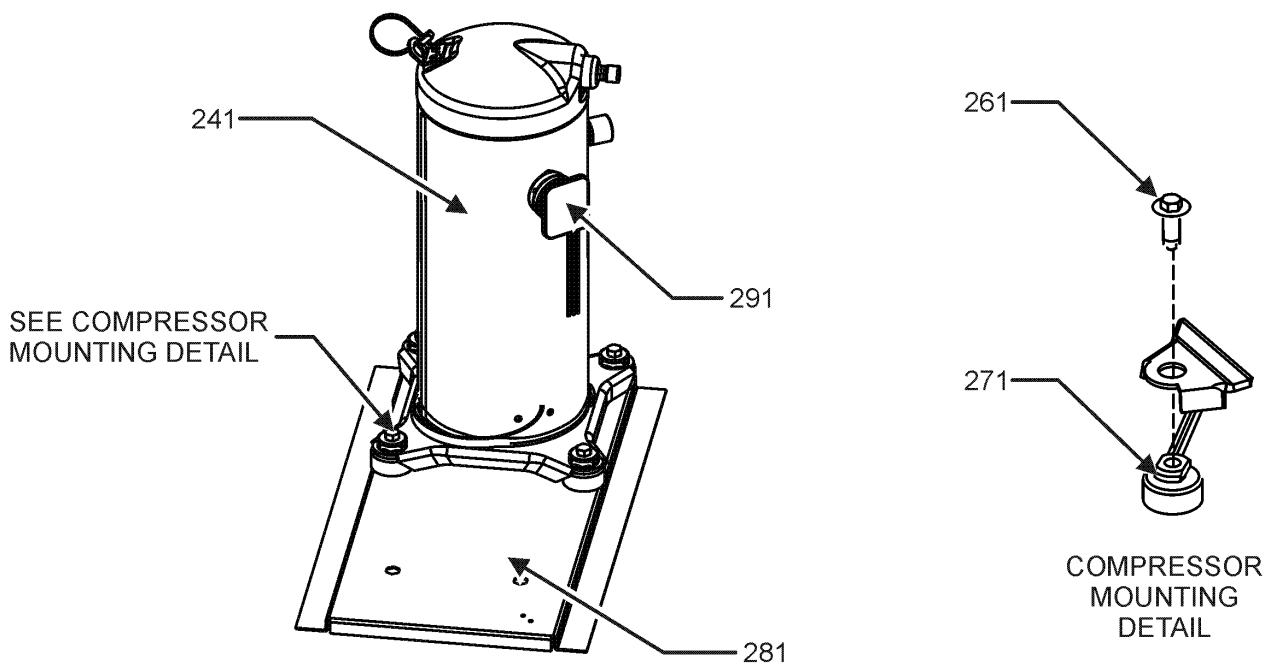
- M1 - DCH102XXX3VHDDAB
- M2 - DCH102XXX3VWXDAB
- M3 - DCH102XXX3VXXXAA
- M4 - DCH102XXX3VXXXAB
- M5 - DCH102XXX3V1DDAB
- M6 - DCH102XXX4VXXXAA
- M7 - DCH102XXX4VXXXAB
- M8 - DCH102XXX7VXXXAA
- M9 - DCH102XXX7VXXXAB
- M10 - DCH1020163VHXXAB
- M11 - DCH1020164VWDDAB

Compressor and Partition Assembly

PARTITION ASSEMBLY



COMPRESSOR ASSEMBLY



Compressor and Partition Assembly

Ref. Part No:	Part No:	Description:	Ref. Part No:	Part No:	Description:
---------------	----------	--------------	---------------	----------	--------------

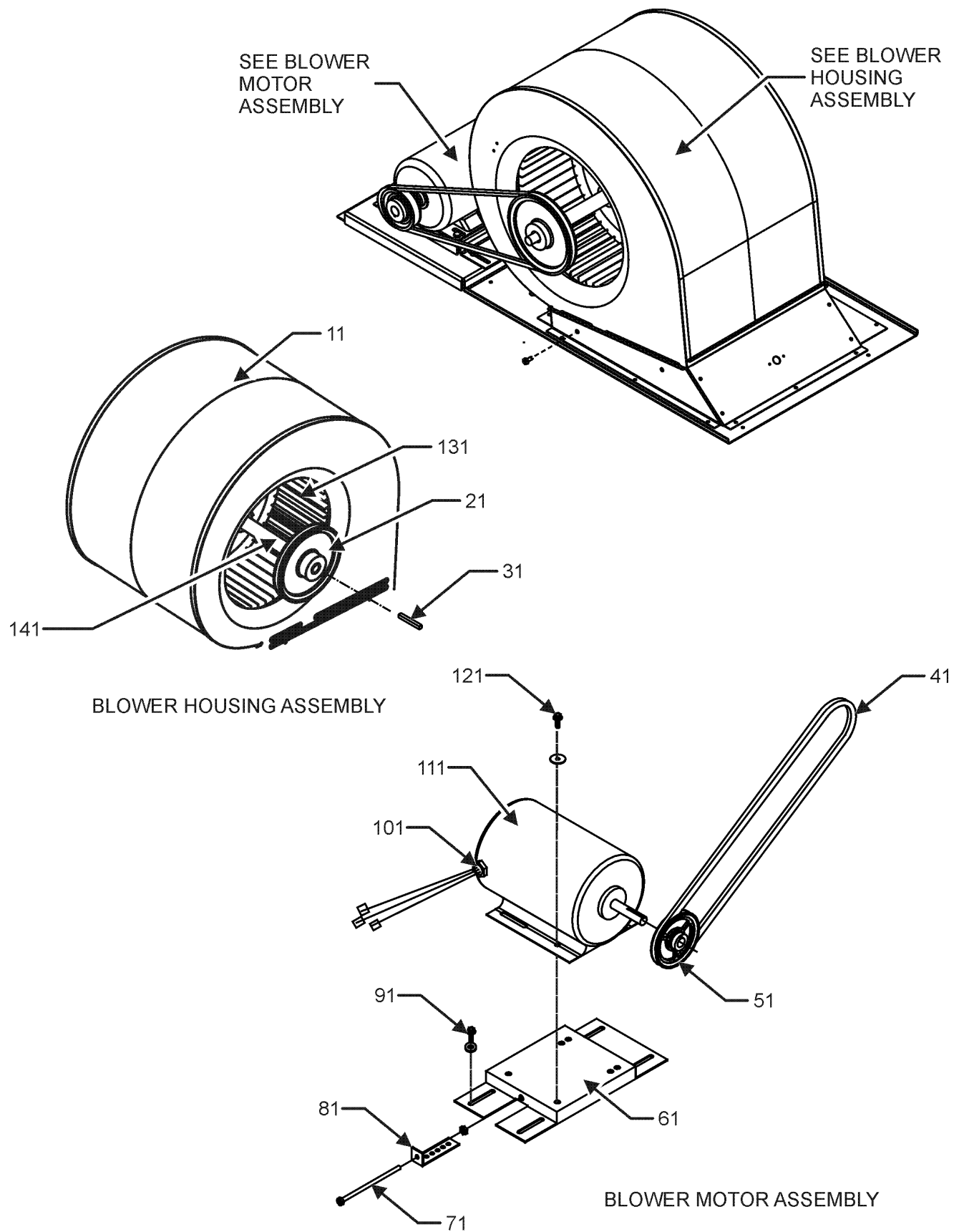
Image 1:

111	0121L00508	DRAIN PAN SUPPORT
141	0161L00002	DRAIN PAN
151	0121L00374	DECK SIDE CHANNEL
161	0121L00365	ELECTRIC HEAT PANEL
171	0121L00090	BLOWER TRANSITION, RH END
181	0121L00177	ELECTRIC HEAT COVER
191	0121L00092	BLOWER TRANSITION, FRONT
201	0121L02500	DECK-BLOWER
211	0121L00097	BLOWER TRANSITION, LH END
221	0121L00145	BLOWER TRANSITION, BACK
241	ZP44K5ETF5130	COMPRESSOR 44000, 200/230/60/3 (M1, M2, M3, M4, M5, M10)
241	ZP44K5ETFD130	COMPRESSOR 44000, 460/60/3 (M6, M7, M11)
241	ZP44K5ETFE130	COMPRESSOR 44000, 575/60/3 (M8, M9)
261	M0221641	TF SHOULDER SCREW (QTY 8)
271	B1339533	COMPRESSOR GROMMET (QTY 8)
281	0121L02128	COMPRESSOR MOUNTING PLATE (QTY 2)
291	0159L00066	Harness, comp scroll
291	0159L00067	Harness, comp scroll
311	0121L00513	BRACE-CONDENSER (QTY 2)
331	0154L00009	DRAIN PAN GASKET
341	0163L00071	DRAIN PLUG
NS	0121L01398	DECK, SUPPORT BLOWER (M1, M5, M11)
NS	0121L01402	DECK, SUPPORT CONTROL (M1, M5, M11)
NS	0121L00321	SMOKE DETECTOR COVER (QTY 2)

Expanded Model Nomenclature

M1 - DCH102XXX3VHDDAB
M2 - DCH102XXX3VWXDAB
M3 - DCH102XXX3VXXXAA
M4 - DCH102XXX3VXXXAB
M5 - DCH102XXX3V1DDAB
M6 - DCH102XXX4VXXXAA
M7 - DCH102XXX4VXXXAB
M8 - DCH102XXX7VXXXAA
M9 - DCH102XXX7VXXXAB
M10 - DCH1020163VHXXAB
M11 - DCH1020164VWDDAB

Blower Assembly



Blower Assembly

Ref. Part No: No:	Description:	Ref. Part No: No:	Description:
-------------------	--------------	-------------------	--------------

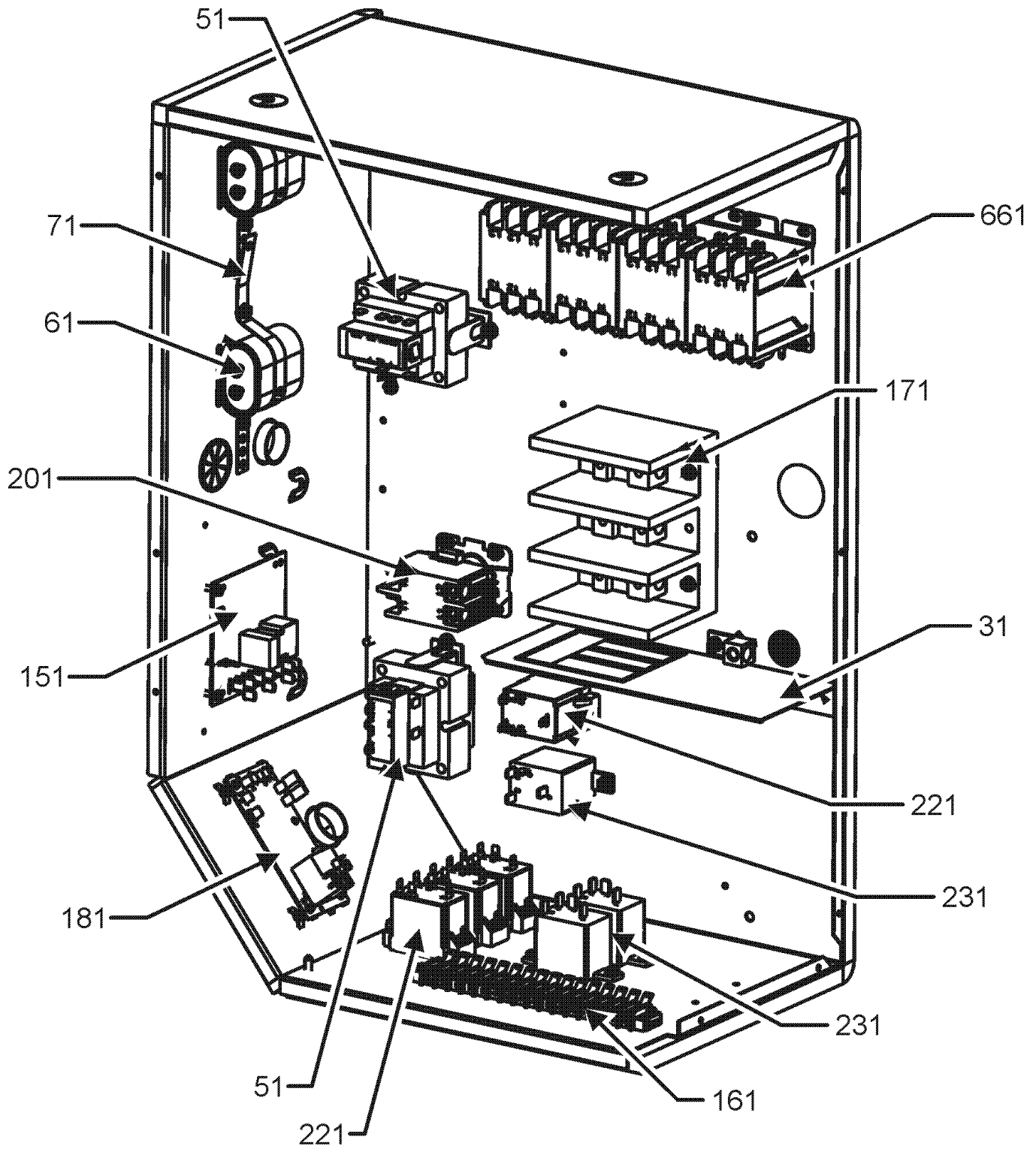
Image 1:

11	04-01525	BLOWER HOUSING
21	0163L00134	SHEAVE, FIXED AK74H
31	B1398604	STEEL KEY (000158812) 2.0"
41	0164L00000	NOTCHED FAN BELT AX51
51	0163L00012	VARIABLE PITCH SHEAVE VL40
61	0121L01504	MOTOR BASE
71	0163M00045	BOLT 1/4-20 X 4"
81	3225000F	BELT TIGHTENER ANGLE
91	B1446707	SCREW 5/16-18 X 1" (QTY 4)
101	B1393726	ELECT. CONNECTING BUSHING
111	0131L00041	MOTOR 2 HP BELT DRIVE 208-230V (M1, M2, M3, M4, M5, M10)
111	0131L00043	MOTOR 2HP BELT DRIVE 460V (M6, M7, M11)
111	0131L00042	MOTOR 2HP BELT DRIVE 575V (M8, M9)
121	B1393738	BOLT 1/4-20 X 3/4" (QTY 4)
131	03-77429	BLOWER WHEEL
141	04-11525	BLOWER SHAFT
NS	04-02196	BEARING & FRAME ASSY

Expanded Model Nomenclature

M1 - DCH102XXX3VHDDAB
M2 - DCH102XXX3VWXDAB
M3 - DCH102XXX3VXXXAA
M4 - DCH102XXX3VXXXAB
M5 - DCH102XXX3V1DDAB
M6 - DCH102XXX4VXXXAA
M7 - DCH102XXX4VXXXAB
M8 - DCH102XXX7VXXXAA
M9 - DCH102XXX7VXXXAB
M10 - DCH1020163VHXXAB
M11 - DCH1020164VWDDAB

Control Box Assembly



Contorl Box Assembly

Ref. Part No: No:	Description:	Ref. Part No: No:	Description:
-------------------	--------------	-------------------	--------------

Image 1:

31	0121G00491	VOLTAGE BARRIER
51	0130M00144	TRANSFORMER (M1, M2, M3, M4, M5, M10)
51	0130M00145	TRANSFORMER 480V to 24V, 75VA (M6, M7, M11)
51	0130M00148	TRANSFORMER 575V to 24V, 75VA (M8, M9)
61	CAP100000370LA	CAPACITOR 10/370V (M1, M2, M4, M5, M7, M9, M10, M11)
61	CAP030000440LA	CAPACITOR 3/440V (M8)
61	CAP050000370LA	CAPACITOR 5/370V (M3)
61	CAP075000370LA	CAPACITOR 7.5/370V (M6)
71	20520901	CAPACITOR STRAP (QTY 2)
151	PCBDM101	DEFROST CONTROL BOARD
161	0130M00038	TERMINAL BOARD
171	0130M00042	BLOCK, DISTRIB. 7.5-25 TON
181	PCBFM103	ELECTRONIC BLOWER TIME DELAY
201	CONT2P040024V	CONTACTOR 40 AMP, 2P, 24V
221	10135604	RELAY (QTY 4)
231	0130M00242	24V RELAY (QTY 3)
661	CONT3P025024V	CONTACTOR 25 AMP, 3P, 24V (QTY 4)
NS	0259L00153	2 SPEED CONTROL HARNESS
NS	0259L00154	2 SPEED HP HARNESS
NS	0259L00155	2 SPEED RELAY HARNESS
NS	0259L00303	COND FAN/TRANSFORMER HARNESS
NS	0259L00159	DEFROST BOARD HARNESS
NS	0259L00157	DEFROST RELAY HARNESS
NS	0259L00165	ECONOMIZER HARNESS
NS	0259L00191	HARNESS, BELT DRIVE MOTOR
NS	0259L00092	HARNESS-SMOKE DETECTOR SENSOR (M1, M2, M5, M11)
NS	0259L00032	LCM HARNESS, ELECTRIC HEAT
NS	0259L00502	WIRE HARNESS
NS	0259L00148	WIRE HARNESS ASSY
NS	0259L00149	WIRE HARNESS ASSY
NS	0259L00150	WIRE HARNESS ASSY
NS	0259L00151	WIRE HARNESS ASSY
NS	0259L00152	WIRE HARNESS ASSY
NS	0259L00156	WIRE HARNESS ASSY
NS	0259L00158	WIRE HARNESS ASSY
NS	0259L00090	WIRE HARNESS-SMOKE DETECTOR (M1, M2, M5, M11)

Expanded Model Nomenclature

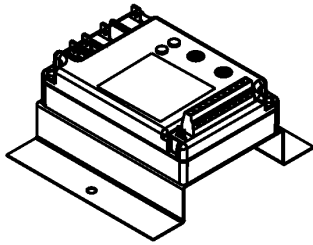
M1 - DCH102XXX3VHDDAB
M2 - DCH102XXX3VWXDAB
M3 - DCH102XXX3VXXXAA
M4 - DCH102XXX3VXXXAB
M5 - DCH102XXX3V1DDAB
M6 - DCH102XXX4VXXXAA
M7 - DCH102XXX4VXXXAB
M8 - DCH102XXX7VXXXAA
M9 - DCH102XXX7VXXXAB
M10 - DCH1020163VHXXAB
M11 - DCH1020164VWDDAB

Accessory Parts List

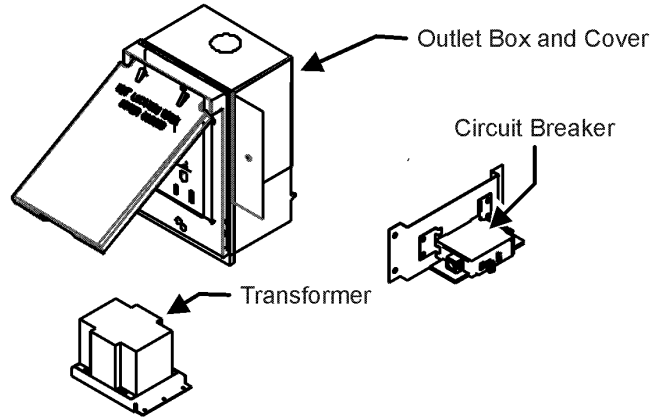
ACCESSORY PARTS LIST

NOTE: NOT ALL OPTIONS AVAILABLE FOR ALL PRODUCTS

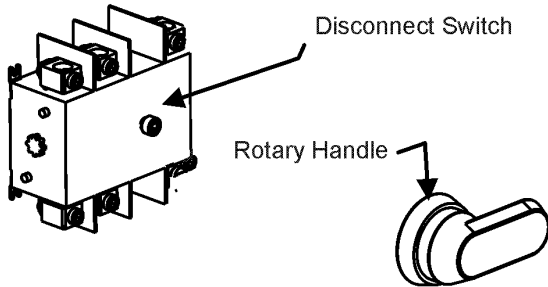
1 LOW AMBIENT KITS



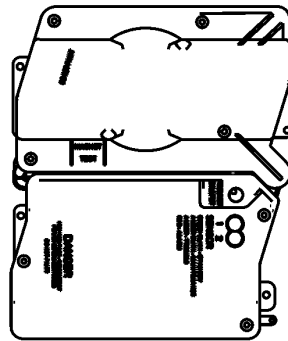
2 GFCI CONVENIENCE OUTLET



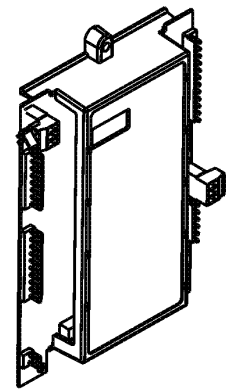
3 DISCONNECT MODULE (NON-FUSED)



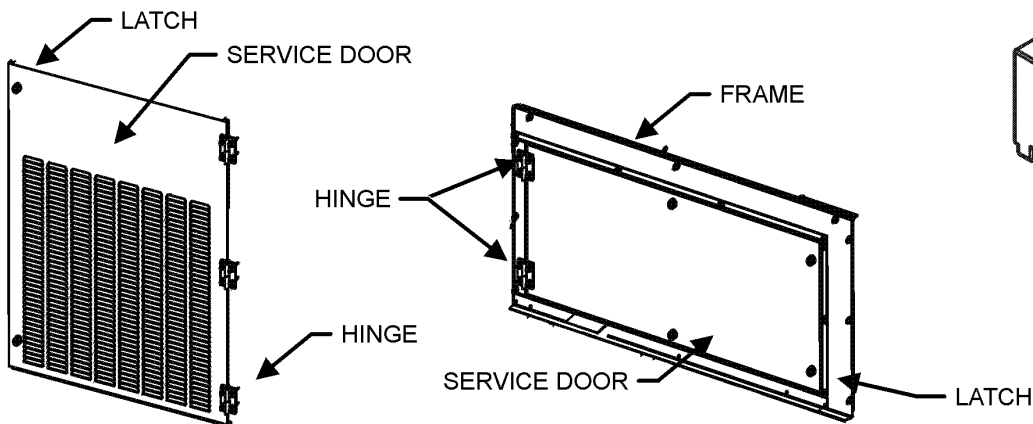
4 SMOKE DETECTORS



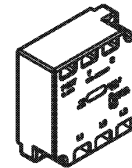
5 DDC CONTROL



6 HINGED DOOR ASSEMBLIES



7 PHASE MONITOR



Accessory Parts List

Ref. Part No:	Part No:	Description:	Ref. Part No:	Part No:	Description:
Image 1:					
NS	EHK4-16	15 KW 460/3 ELECTRIC HEAT (M11)			
NS	EHK3-16	15KW 208-230/3 (M10)			
NS	DDNECNJ90150B	7.5-12.5 TON DFLOW ECON (M2, M11)			
NS	0121L01395NG	BLOWER SERVICE DOOR, BACK (M1, M5, M11)			
NS	0121L01394NG	BLOWER SERVICE DOOR, FRONT (M1, M5, M11)			
NS	0121L00768	BRACKET-SMOKE DETECTOR (M1, M2, M5, M11)			
NS	0121L00973NG	DISCONNECT SWITCH COVER (M1, M2, M5, M10, M11)			
NS	0121L01397NG	DOOR FRAME, BLOWER (M1, M5, M11)			
NS	0121L01406NG	DOOR FRAME, CONTROL (M1, M5, M11)			
NS	0130L00039	HANDLE, ROTARY (M1, M2, M5, M10, M11)			
NS	0163M00307	HINGE, LEFT HAND (M1, M5, M11)			
NS	0163M00308	HINGE, RIGHT HAND (M1, M5, M11)			
NS	0163M00322	LATCH (M1, M5, M11)			
NS	0121L02220NG	PNT, DOOR FRAME FILTER (M1, M5, M11)			
NS	0121L02223NG	PNT, SERVICE DOOR BACK FILTER (M1, M5, M11)			
NS	0121L02218NG	PNT, SERVICE DOOR FRONT FILTER (M1, M5, M11)			
NS	RS400	REMOTE SENSOR (M5)			
NS	SP400	SENSOR PACK (M5)			
NS	0121L01404NG	SERVICE DOOR BACK, CONTROL (M1, M5, M11)			
NS	0121L01403NG	SERVICE DOOR FRONT, CONTROL (M1, M5, M11)			
NS	0130L00043	SHAFT, CUT (M1, M2, M5)			
NS	0130L00056	SHAFT, CUT (M10)			
NS	0130L00057	SHAFT, CUT (M11)			
NS	0130L00049	SHAFT, DISCONNECT (M1, M2, M5, M10, M11)			
NS	D4120	SMOKE DETECTOR, PHOTO 4WIRE (M1, M2, M5, M11)			
NS	ECP400-5	SURVEYOR ECP (M5)			
NS	0130L00027	SWITCH-DISCONNECT 100A (M10)			
NS	0130L00033	SWITCH-DISCONNECT 200A (M1, M2, M5)			
NS	0130L00046	SWITCH-DISCONNECT 60A (M11)			
NS	0259L00557	WIRE HARNESS (M5)			

Expanded Model Nomenclature

M1 - DCH102XXX3VHDDAB
M2 - DCH102XXX3VWXDAB
M3 - DCH102XXX3VXXXAA
M4 - DCH102XXX3VXXXAB
M5 - DCH102XXX3V1DDAB
M6 - DCH102XXX4VXXXAA
M7 - DCH102XXX4VXXXAB
M8 - DCH102XXX7VXXXAA
M9 - DCH102XXX7VXXXAB
M10 - DCH1020163VHXXAB
M11 - DCH1020164VWDDAB