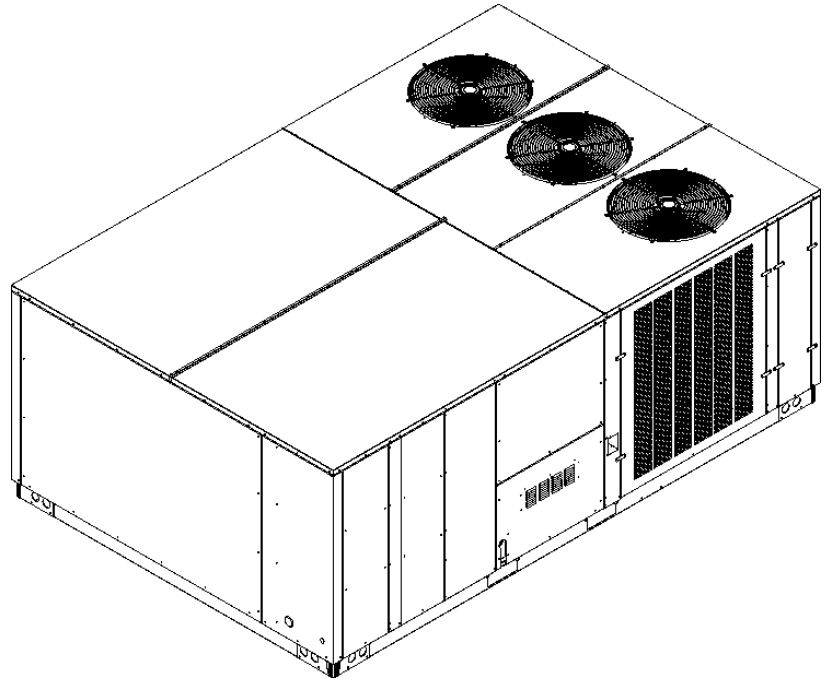


Commercial 15 Ton Package Gas Units

DCG1803503BAXCAA
DCG1803503BAXDAA
DCG1803503BAXXAA
DCG1803503BHFXAA
DCG1803503BHXXAA
DCG1803503BJXBAA
DCG1803503BJXGAA
DCG1803503BJXNAA
DCG1803503BXSXAA
DCG1803503BXXBAA
DCG1803503BXXEAA
DCG1803503BXXHAA
DCG1803503BXXXAA
DCG1803504BAXAAB
DCG1803504BHXAAB
DCG1803504BHXNAB
DCG1803504BHXXAB
DCG1803504BJXBAB
DCG1803504BJXGAA
DCG1803504BJXJAB
DCG1803504BJXNAB
DCG1803504BJXOAB
DCG1803504BVXXAB
DCG1803504BXSXAB
DCG1803504BXXXAA
DCG1803504BXXXAB
DCG1803507BAXXAB
DCG1803507BXSXAA
DCG1803507BXXXAA
DCG1803507BXXXAB



This manual is to be used by qualified technicians only.

This manual replaces RP-D1012K.

Important Information

Index

Functional Parts List	3
Illustration and Parts	4 - 21

Views shown are for parts illustrations only, not servicing procedures

Text Codes:

AR - As Required

NA - Not Available

NS - Not Shown

00000000 - See Note

QTY - Quantity Example (QTY 3) (If Quantity not shown, Quantity = 1)

M - Model Example (M1) (If M Code not shown, then part is used on all Models)

Expanded Model Nomenclature:

Example M1 - Model#1 M2 - Model#2 M3 - Model#3

Daikin Company, L.P. is not responsible for personal injury or property damage resulting from improper service. Review all service information before beginning repairs.

Warranty service must be performed by an authorized technician, using authorized factory parts. If service is required after the warranty expires, Daikin Company, L.P. also recommends contacting an authorized technician and using authorized factory parts.

Daikin Company, L.P. reserves the right to discontinue, or change at any time, specifications or designs without notice or without incurring obligations.

For assistance within the U.S.A. contact:

Homeowner Support
Daikin North America, LLC
19001 Kermier Road
Waller, Texas 77484
855-770-5678-Telephone
713-863-2382-Facsimile

For assistance outside the U.S.A. contact:

International Division
Daikin North America, LLC
19001 Kermier Road
Waller, Texas 77484
713-861-2500-Telephone
713-863-2382-Facsimile

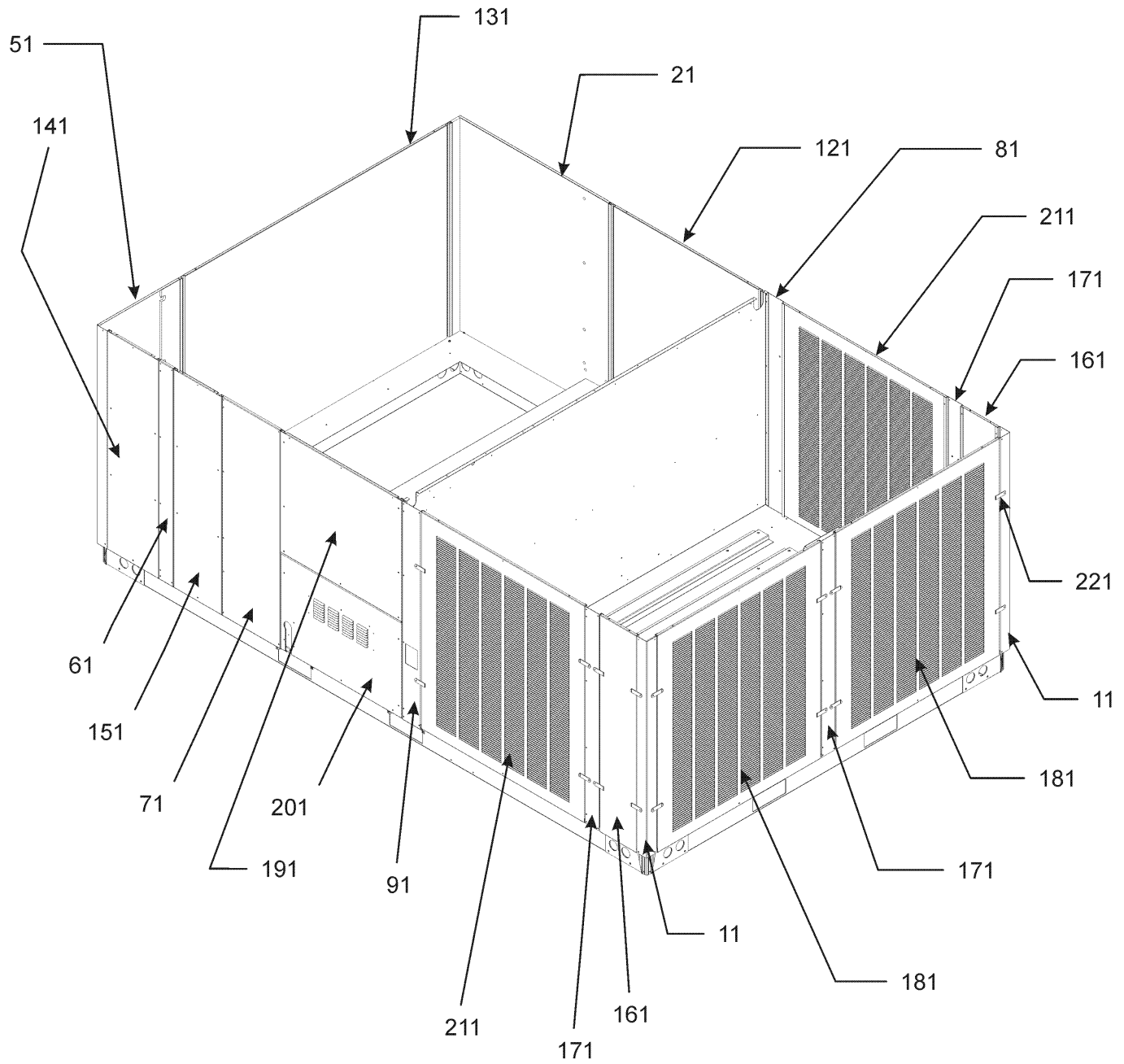
Functional Parts

Part

No: Description:

0130M00025	24V RELAY (QTY 3)	0130M00148	TRANSFORMER 575V to 24V, 75VA (M27, M28, M29, M30)
0163L00000	BECKETT BURNER (QTY 7)	0151M00015	VALVE, GAS (HW) VR83
CAP100000370LA	CAPACITOR 10/370V (M1, M2, M3, M4, M5, M6, M7, M8, M9, M10, M11, M12, M13, M14, M15, M16, M17, M18, M20, M21, M22, M23, M24, M26)	0131L00014	VENT MOTOR
CAP050000370LA	CAPACITOR 5/370V (M19, M25, M28, M29)	Expanded Model Nomenclature	
CAP050000440LA	CAPACITOR 5/440V (M27, M30)	M1 - DCG1803503BAXCAA	
ZP83KCETF5250	COMPRESSOR 83000, 200/230/60/3 (M1, M2, M3, M4, M5, M6, M7, M8, M9, M10, M11, M12, M13)	M2 - DCG1803503BAXDAA	
ZP83KCETFD130	COMPRESSOR 83000, 460/60/3 (M14, M15, M16, M17, M18, M19, M20, M21, M22, M23, M24, M25, M26)	M3 - DCG1803503BAXXAA	
ZP83KCETFE130	COMPRESSOR 83000, 575/60/3 (M27, M28, M29, M30)	M4 - DCG1803503BHXF AA	
0131M00430	COND MOTOR 1/3 HP, 1 SP, 6 PL (M1, M2, M3, M4, M5, M6, M7, M8, M9, M10, M11, M12, M13)	M5 - DCG1803503BHXXAA	
B13400249	COND MOTOR 1/3 HP, 460V (M19, M25)	M6 - DCG1803503BJXBAA	
0131M00179	COND MOTOR 1/3 HP, 6 PL, 575V (M28, M29)	M7 - DCG1803503BJXGAA	
0131M00500	COND MOTOR 1/3 HP, OD, LAK (M27, M30)	M8 - DCG1803503BJXNAA	
0131M00433	COND MOTOR 460/60 1/3 HP (M14, M15, M16, M17, M18, M20, M21, M22, M23, M24, M26)	M9 - DCG1803503BXSXAA	
0131M00274	COND MOTOR 5.0 HP (M1, M2, M3, M4, M5, M6, M7, M8, M9, M10, M11, M12, M13, M14, M15, M16, M17, M18, M19, M20, M21, M22, M23, M24, M25, M26)	M10 - DCG1803503BXXBAA	
CONT3P030024V	CONTACTOR 30 AMP, 3P, 24V (M14, M15, M16, M17, M18, M19, M20, M21, M22, M23, M24, M25, M26, M27, M28, M29, M30)	M11 - DCG1803503BXXEAA	
0130L00019	CRANK CASE HEATER, 70W, 575V (M27, M28, M29, M30)	M12 - DCG1803503BXXHAA	
0130L00017	CRANK CASE HEATER-70W 240V (M1, M2, M3, M4, M5, M6, M7, M8, M9, M10, M11, M12, M13)	M13 - DCG1803503BXXXAA	
0130L00018	CRANK CASE HEATER-70W, 480V (M14, M15, M16, M17, M18, M19, M20, M21, M22, M23, M24, M25, M26)	M14 - DCG1803504BAXAAB	
0130M00074	CUT-OUT SWITCH, HIGH PRESSURE	M15 - DCG1803504BHXAAB	
0130M00087	CUT-OUT SWITCH, LOW PRESSURE	M16 - DCG1803504BHYNAB	
0164L00008	FAN BELT, NOTCHED	M17 - DCG1803504BHXXAB	
10625733	FAN BLADE 22" ALUM CCW (QTY 3)	M18 - DCG1803504BJXBAB	
0130F00010	FLAME SENSOR	M19 - DCG1803504BJXGAA	
PCBAG123	IGNITION BOARD, DSI INTEGRATED	M20 - DCG1803504BJXJAB	
20261709	IGNITOR	M21 - DCG1803504BJXNAB	
0130M00064	LIMIT	M22 - DCG1803504BJXOAB	
10123529	MANUAL RESET LIMIT-GREEN	M23 - DCG1803504BVXXAB	
0131L00007	MOTOR-5 HP BELT DRIVE 575V 3P (M27, M28, M29, M30)	M24 - DCG1803504BXSXAB	
11112501	PRESSURE SWITCH	M25 - DCG1803504BXXXAA	
0130M00242	RELAY, 24V (QTY 2)	M26 - DCG1803504BXXXAB	
0130M00038	TERMINAL BOARD	M27 - DCG1803507BAXXAB	
0130M00144	TRANSFORMER (M1, M2, M3, M4, M5, M6, M7, M8, M9, M10, M11, M12, M13)	M28 - DCG1803507BXSXAA	
0130M00146	TRANSFORMER 480V TO 230V, 150VA (M14, M15, M16, M17, M18, M19, M20, M21, M22, M23, M24, M25, M26)	M29 - DCG1803507BXXXAA	
0130M00145	TRANSFORMER 480V to 24V, 75VA (M14, M15, M16, M17, M18, M19, M20, M21, M22, M23, M24, M25, M26)	M30 - DCG1803507BXXXAB	
0130M00147	TRANSFORMER 575V TO 230V, 150VA (M27, M28, M29, M30)		

Cabinet Assembly



Cabinet Assembly

**Ref. Part
No: No:**

Description:

**Ref. Part
No: No:**

Description:

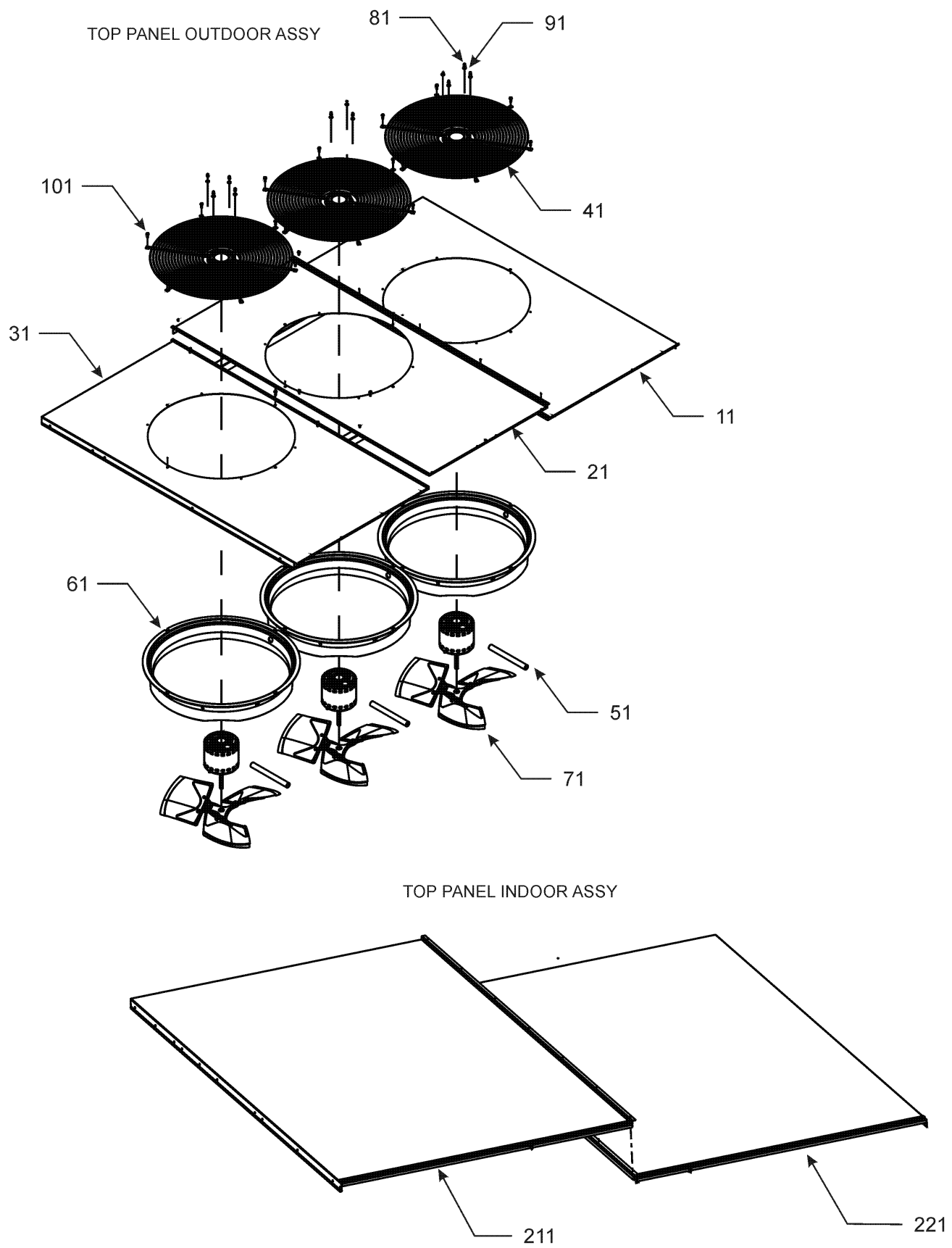
Image 1:

11	0121L01143NG	POST, CORNER (QTY 2)
21	0121L00681NG	PAINTED EVAP PANEL
51	0121L00679NG	CONTROL CORNER PANEL (M1, M2, M3, M9, M10, M11, M13, M23, M24, M25, M26, M27, M28, M29, M30)
51	0121L00800NG	DUCT PANEL (M4, M5, M6, M7, M8, M15, M16, M17, M18, M19, M20, M21, M22)
51	0121L00742NG	PAINTED CONTROL CORNER (M12, M14)
61	0121L00673NG	CONTROL/FILTER POST
71	0121L00710NG	POST/BLOWER DOOR
81	0121L00903NG	POST PARTITION-EVAP SIDE
91	0121L00904NG	POST PARTITION-GAS FLUE
121	0121L00685NG	BLOWER DOOR-EVAP SIDE
131	0121L00688NG	ACCESSORY PANEL
141	0121L00687NG	CONTROL DOOR
151	0121L00686NG	FILTER DOOR
161	0121L00907NG	PANEL-COND SIDE (QTY 2)
171	0121L01144NG	POST, COND PANEL (QTY 3)
181	0121L01174NG	PANEL, LOUVER END PNT (QTY 2)
191	0121L00713NG	BLOWER DOOR-GAS SIDE
201	0121L00712NG	BURNERS DOOR
211	0152L00000	GRILLE-CONDENSER (QTY 2)
221	0121L00476NG	TURNBUCKLE DOOR (QTY 16)
NS	0121L00562NG	HOOD-COMBUSTION AIR
NS	M0204317	SCREW-MACHINE (QTY 16)

Expanded Model Nomenclature

M1 - DCG1803503BAXCAA
M2 - DCG1803503BAXDAA
M3 - DCG1803503BAXXAA
M4 - DCG1803503BHXFAA
M5 - DCG1803503BHXXAA
M6 - DCG1803503BJXBAA
M7 - DCG1803503BJXGAA
M8 - DCG1803503BJXNAA
M9 - DCG1803503BXSXAA
M10 - DCG1803503BXXBAA
M11 - DCG1803503BXXEAA
M12 - DCG1803503BXXHAA
M13 - DCG1803503BXXXAA
M14 - DCG1803504BAXAAB
M15 - DCG1803504BHXAAB
M16 - DCG1803504BHXNAB
M17 - DCG1803504BHXXAB
M18 - DCG1803504BJXBAB
M19 - DCG1803504BJXGAB
M20 - DCG1803504BJXJAB
M21 - DCG1803504BJXNAB
M22 - DCG1803504BJXOAB
M23 - DCG1803504BVXXAB
M24 - DCG1803504BXSXAB
M25 - DCG1803504BXXXAA
M26 - DCG1803504BXXXAB
M27 - DCG1803507BAXXAB
M28 - DCG1803507BXSXAA
M29 - DCG1803507BXXXAA
M30 - DCG1803507BXXXAB

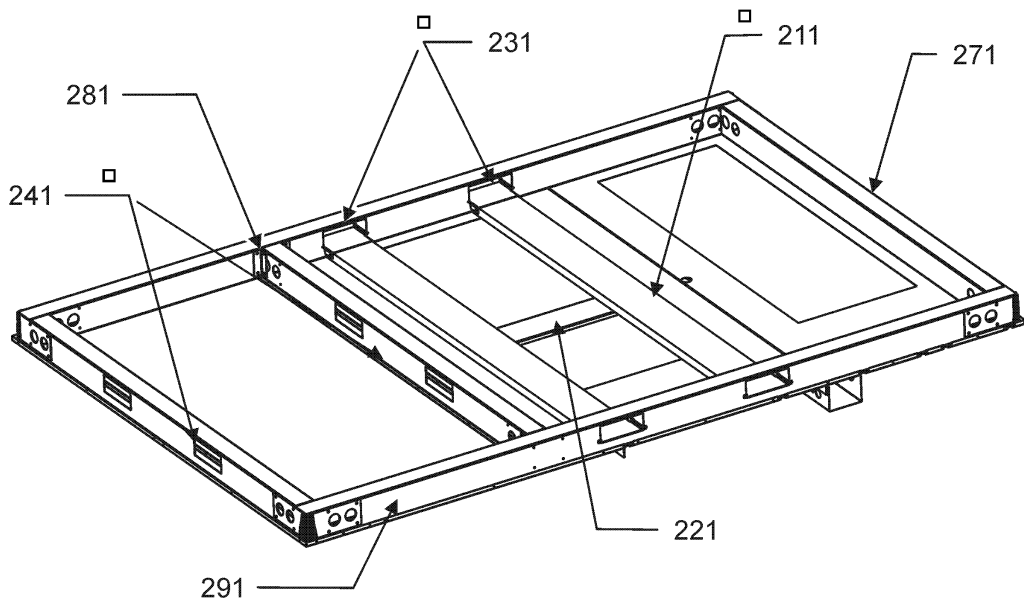
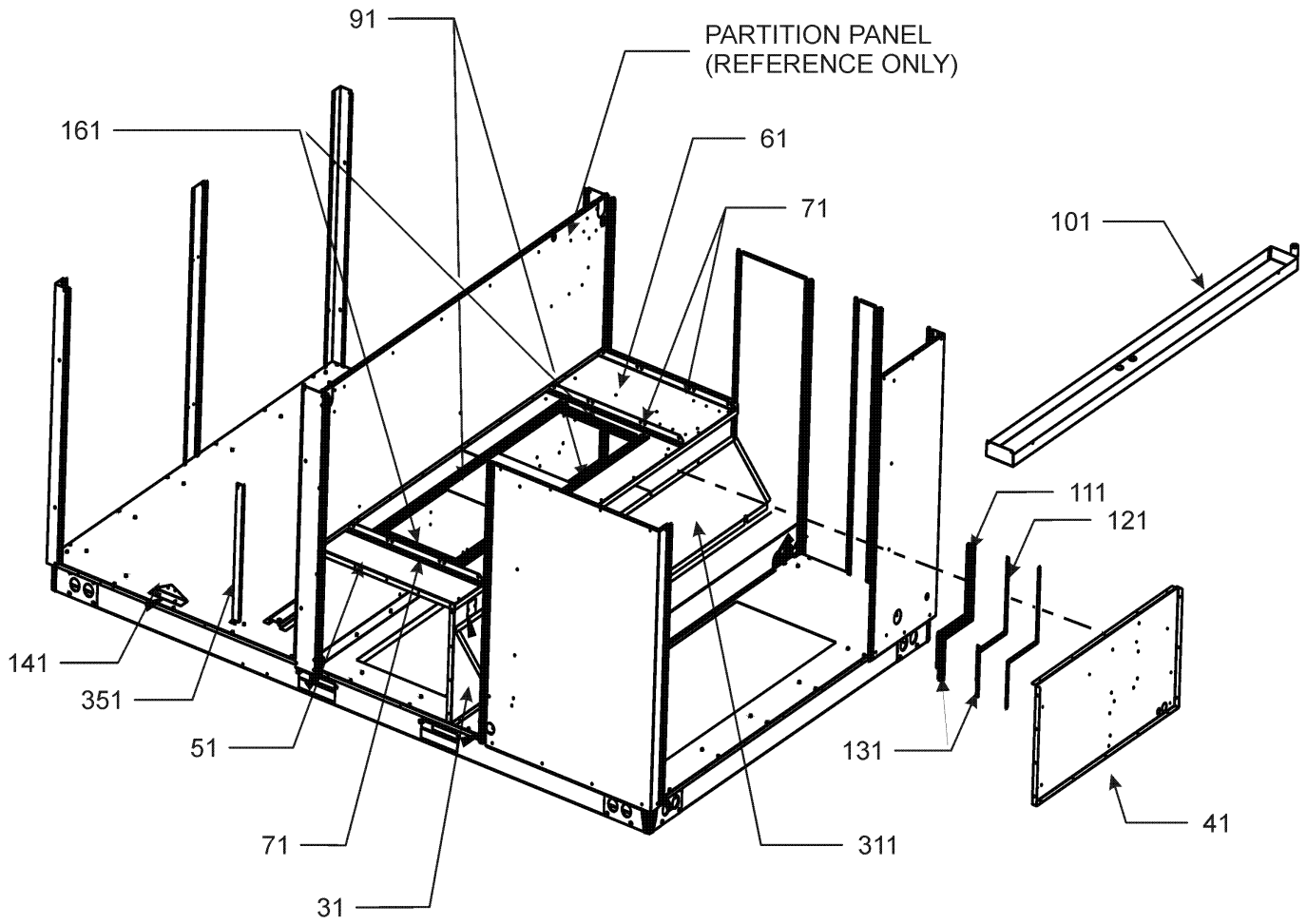
Top Panel Assembly



Top Panel Assembly

Ref. Part No: No:	Description:	Ref. Part No: No:	Description:
<i>Image 1:</i>		Expanded Model Nomenclature	
11	0121L01038NG TOP-FAN,CONTROL SIDE	M1	- DCG1803503BAXCAA
21	0121L01039NG TOP-FAN, CENTER	M2	- DCG1803503BAXDAA
31	0121L01040NG TOP-FAN, EVAP SIDE	M3	- DCG1803503BAXXAA
41	0152G00003 FAN GRILLE (QTY 3)	M4	- DCG1803503BHXFAA
51	17788000083F PVC CONDUIT 8.25" (QTY 3)	M5	- DCG1803503BHXXAA
61	0161L00000 VENTURI RING 22" (QTY 3)	M6	- DCG1803503BJXBAA
71	10625733 FAN BLADE 22" ALUM CCW (QTY 3)	M7	- DCG1803503BJXGAA
81	0163M00006P ACORN NUT 5/16 HEX BLACK (QTY 12)	M8	- DCG1803503BJXNAA
91	0163M00005P WASHER, BLACK (.50 OD .218ID) (QTY 12)	M9	- DCG1803503BXSXAA
101	0163M00004 SCREW #10X3/4", BLACK (QTY 24)	M10	- DCG1803503BXXBAA
131	0131M00430 COND MOTOR 1/3 HP, 1 SP, 6 PL (M1, M2, M3, M4, M5, M6, M7, M8, M9, M10, M11, M12, M13)	M11	- DCG1803503BXXEAA
131	B13400249 COND MOTOR 1/3 HP, 460V (M19, M25)	M12	- DCG1803503BXXHAA
131	0131M00179 COND MOTOR 1/3 HP, 6 PL, 575V (M28, M29)	M13	- DCG1803503BXXXAA
131	0131M00500 COND MOTOR 1/3 HP, OD, LAK (M27, M30)	M14	- DCG1803504BAXAAB
131	0131M00433 COND MOTOR 460/60 1/3 HP (M14, M15, M16, M17, M18, M20, M21, M22, M23, M24, M26)	M15	- DCG1803504BHXAAB
211	0121L00693NG TOP-CONTROL SIDE	M16	- DCG1803504BHXNAB
221	0121L00694NG TOP PANEL ASSY	M17	- DCG1803504BHXXAB
NS	M0272803 WASHER-LOCK (QTY 3)	M18	- DCG1803504BJXBAB
		M19	- DCG1803504BJXGAA
		M20	- DCG1803504BJXJAB
		M21	- DCG1803504BJXNAB
		M22	- DCG1803504BJXOAB
		M23	- DCG1803504BVXXAB
		M24	- DCG1803504BXSXAB
		M25	- DCG1803504BXXXAA
		M26	- DCG1803504BXXXAB
		M27	- DCG1803507BAXXAB
		M28	- DCG1803507BXSXAA
		M29	- DCG1803507BXXXAA
		M30	- DCG1803507BXXXAB

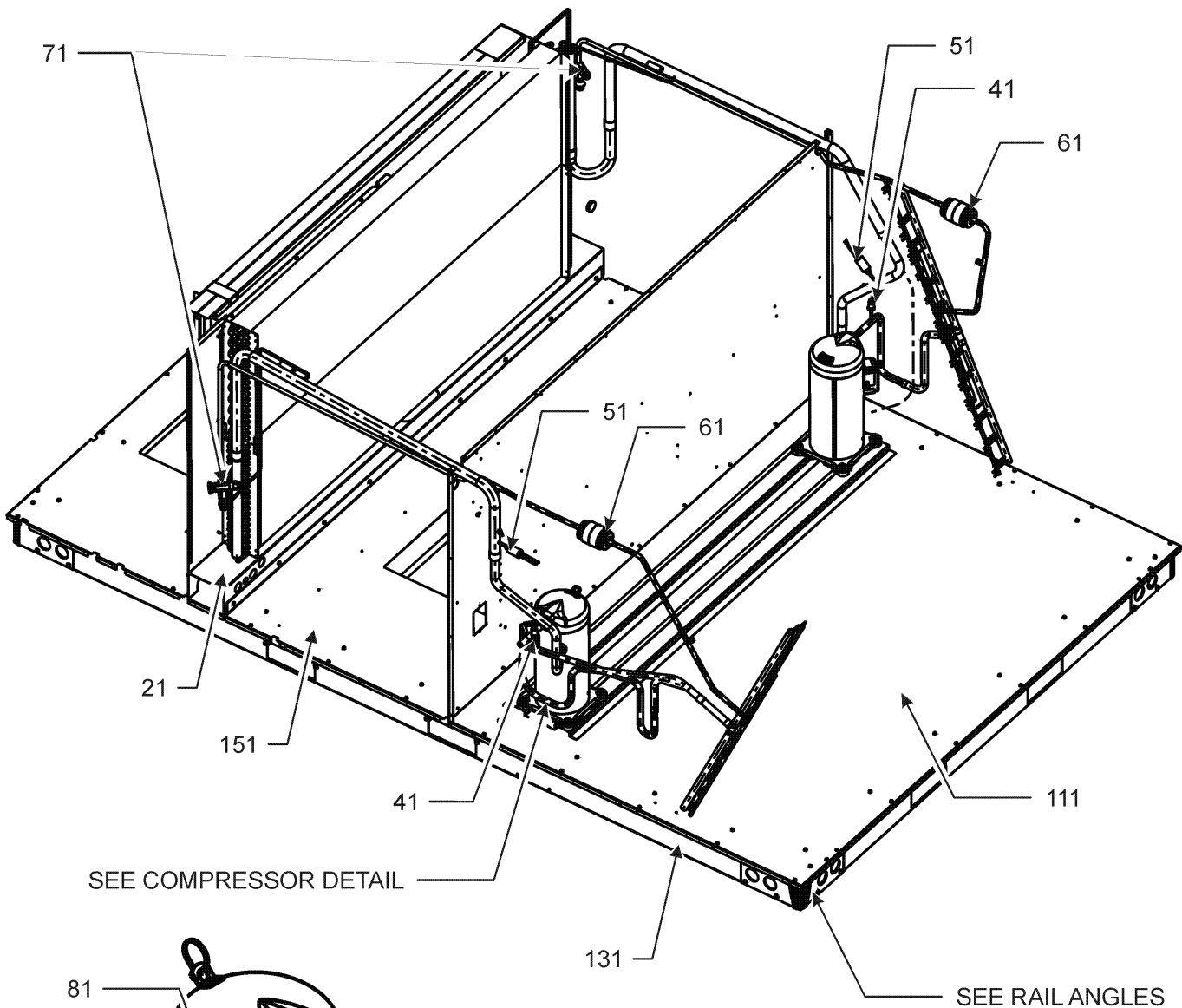
Partition Assembly



Partition Assembly

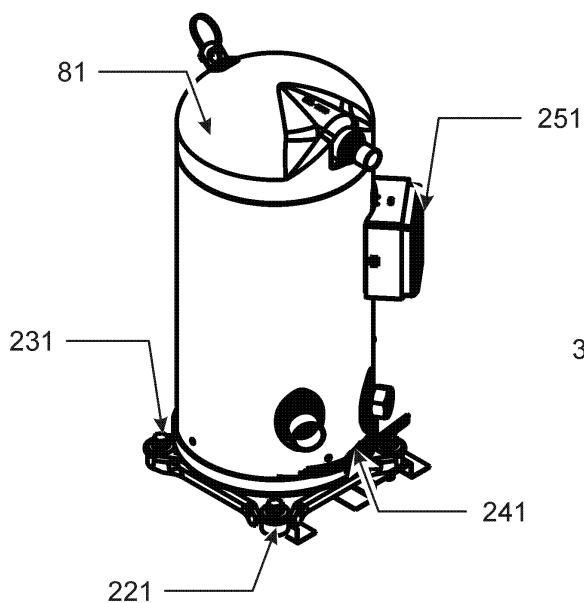
Ref. Part No: No:	Description:	Ref. Part No: No:	Description:
<i>Image 1:</i>		Expanded Model Nomenclature	
31	0121L01163 DECK, SIDE DUCT END	M1	- DCG1803503BAXCAA
41	0121L01162 DECK, SIDE HEAT END	M2	- DCG1803503BAXDAA
51	0121L00652 BLOWER DECK, EVAP SIDE	M3	- DCG1803503BAXXAA
61	0121L00653 BLOWER DECK, MOTOR SIDE	M4	- DCG1803503BHXFAA
71	0121L01431 MOTOR MOUNT ANGLE (QTY 3)	M5	- DCG1803503BHXXAA
91	0121L00478 BLOWER DECK RAIL (QTY 2)	M6	- DCG1803503BJXBAA
101	0270L00612DG WELDMENT-DRAIN PAN	M7	- DCG1803503BJXGAA
111	0121L00551 HEAT EXCHANGER ANGLE, RH SIDE	M8	- DCG1803503BJXNAA
121	0121L00552 HEAT EXCHANGER ANGLE, LH SIDE	M9	- DCG1803503BXSXAA
131	0121L00553 LOWER HEAT EXCHANGER ANGLE (QTY 2)	M10	- DCG1803503BXXBAA
141	0121L00913 BRACKET-COND/BASEPAN (QTY 2)	M11	- DCG1803503BXXEAA
161	0121L00481 BLOWER RAIL (QTY 2)	M12	- DCG1803503BXXHAA
211	0141L00029 FORK BOARD (QTY 2)	M13	- DCG1803503BXXXAA
221	0121L00605 FORK BOARD PLATE	M14	- DCG1803504BAXAAB
231	0121L00724 FORK BOARD BRACKET (QTY 4)	M15	- DCG1803504BHXAAB
241	0121L00721 BASE RAIL, CONDENSER END (QTY 2)	M16	- DCG1803504BHXNAB
271	0121L00722 BASE RAIL, ACCESSORY END	M17	- DCG1803504BHXXAB
281	0121L00625 COMPRESSOR RAIL BRACKET (QTY 4)	M18	- DCG1803504BJXBAB
291	0121L00719 CONTROL SIDE BASE RAIL	M19	- DCG1803504BJXGAA
311	0121L01158 SHIELD, BLOWOFF	M20	- DCG1803504BJXJAB
351	0121L00901 BRACE-COND COILS (QTY 2)	M21	- DCG1803504BJXNAB
NS	0121L00321 SMOKE DETECTOR COVER	M22	- DCG1803504BJXOAB
		M23	- DCG1803504BVXXAB
		M24	- DCG1803504BXSXAB
		M25	- DCG1803504BXXXAA
		M26	- DCG1803504BXXXAB
		M27	- DCG1803507BAXXAB
		M28	- DCG1803507BXSXAA
		M29	- DCG1803507BXXXAA
		M30	- DCG1803507BXXXAB

Compressor & Tubing Assy

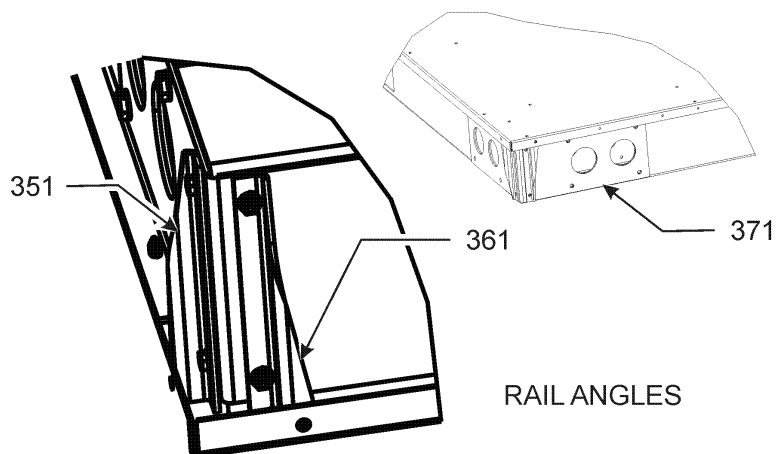


SEE COMPRESSOR DETAIL

SEE RAIL ANGLES



COMPRESSOR DETAIL

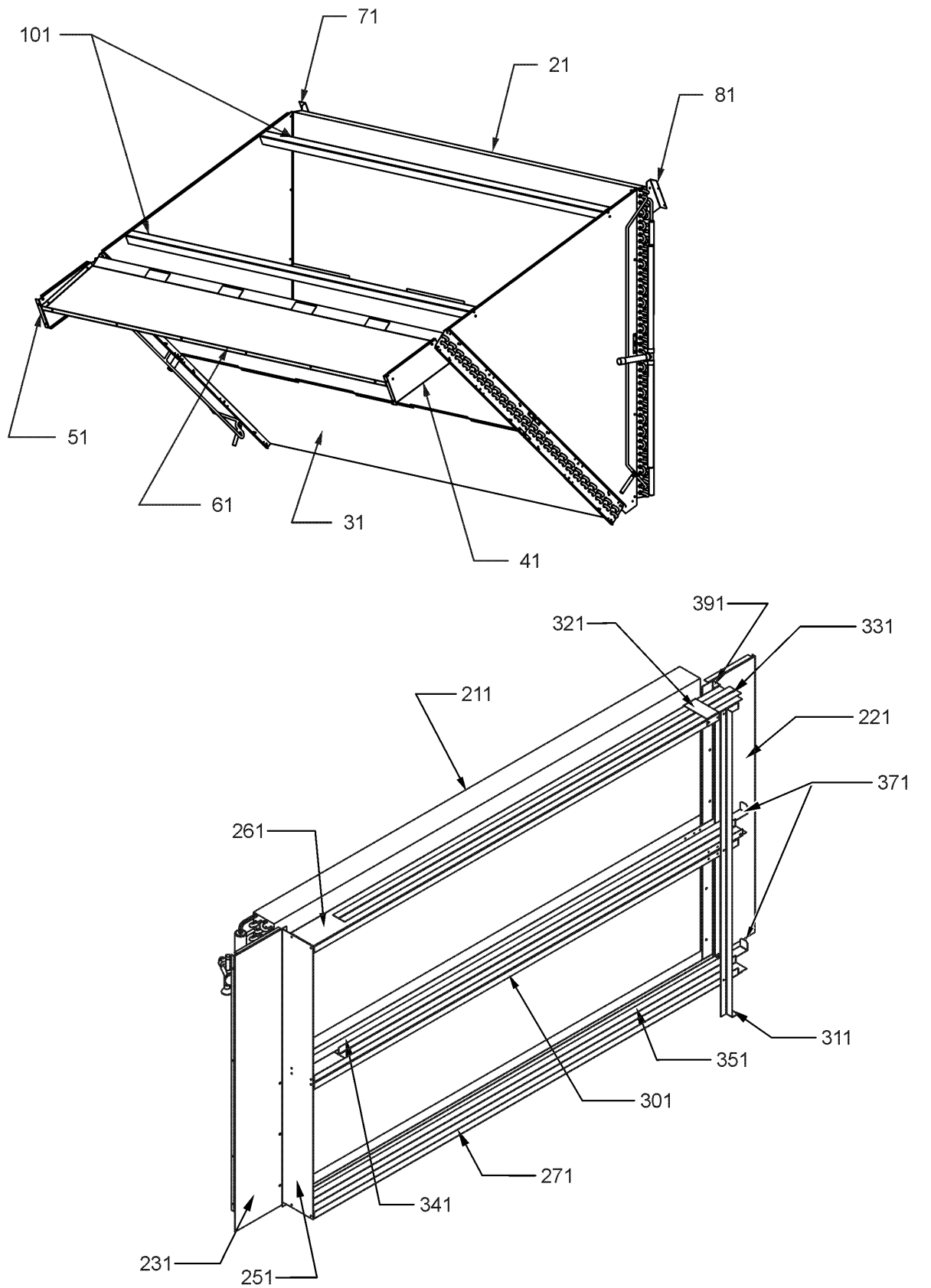


RAIL ANGLES

Compressor & Tubing Assy

Ref. Part No: No:	Description:	Ref. Part No: No:	Description:
<i>Image 1:</i>		Expanded Model Nomenclature	
21	0270L00189	BASEPAN WELDMENT, RETURN SIDE	M1 - DCG1803503BAXCAA
41	0130M00074	CUT-OUT SWITCH, HIGH PRESSURE	M2 - DCG1803503BAXDAA
51	0130M00087	CUT-OUT SWITCH, LOW PRESSURE	M3 - DCG1803503BAXXAA
61	0151M00012	BI-FLOW FILTER DRIER	M4 - DCG1803503BHXF AA
71	0151L00011	VALVE, TXV R-410A (QTY 2)	M5 - DCG1803503BHXXAA
81	ZP83KCETF5250	COMPRESSOR 83000, 200/230/60/3 (M1, M2, M3, M4, M5, M6, M7, M8, M9, M10, M11, M12, M13)	M6 - DCG1803503BJXBAA
81	ZP83KCETFD130	COMPRESSOR 83000, 460/60/3 (M14, M15, M16, M17, M18, M19, M20, M21, M22, M23, M24, M25, M26)	M7 - DCG1803503BJXGAA
81	ZP83KCETFE130	COMPRESSOR 83000, 575/60/3 (M27, M28, M29, M30)	M8 - DCG1803503BJXNAA
111	0270L00336	BASEPAN WELD, OUTDOOR	M9 - DCG1803503BXSXAA
131	0121L00720	SIDE RAIL	M10 - DCG1803503BXXBAA
151	0121L00948	BASE PAN-SUPPLY	M11 - DCG1803503BXXEAA
221	0164M00018	COMPRESSOR GROMMET (QTY 8)	M12 - DCG1803503BXXHAA
231	B1393740	COMPRESSOR BOLT & SLEEVE (QTY 8)	M13 - DCG1803503BXXXAA
241	0130L00019	CRANK CASE HEATER, 70W, 575V (M27, M28, M29, M30)	M14 - DCG1803504BAXAAB
241	0130L00017	CRANK CASE HEATER-70W 240V (M1, M2, M3, M4, M5, M6, M7, M8, M9, M10, M11, M12, M13)	M15 - DCG1803504BHX AAB
241	0130L00018	CRANK CASE HEATER-70W, 480V (M14, M15, M16, M17, M18, M19, M20, M21, M22, M23, M24, M25, M26)	M16 - DCG1803504BHXNAB
251	0159L00020	COMPRESSOR SCROLL HARNESS (M1, M2, M3, M4, M5, M6, M7, M8, M9, M10, M11, M12, M13)	M17 - DCG1803504BHXXAB
251	0159L00021	COMPRESSOR SCROLL HARNESS (M1, M2, M3, M4, M5, M6, M7, M8, M9, M10, M11, M12, M13)	M18 - DCG1803504BJXBAB
251	0159L00071	Harness, comp scroll (M14, M15, M16, M17, M18, M19, M20, M21, M22, M23, M24, M25, M26, M27, M28, M29, M30)	M19 - DCG1803504BJXGAA
251	0159L00070	Harness, compmpressor 460V (M14, M15, M16, M17, M18, M19, M20, M21, M22, M23, M24, M25, M26, M27, M28, M29, M30)	M20 - DCG1803504BJXJAB
351	0121L00616	RAIL BRACE ANGLE, RIGHT (QTY 4)	M21 - DCG1803504BJXNAB
361	0121L00617	RAIL BRACE ANGLE, LEFT (QTY 4)	M22 - DCG1803504BJXOAB
371	0121L00723	BASE RAIL CORNER BRACE (QTY 4)	M23 - DCG1803504BVXXAB
NS	0163M00175	CAP WITH O-RING (QTY 4)	M24 - DCG1803504BXSXAB
			M25 - DCG1803504BXXXAA
			M26 - DCG1803504BXXXAB
			M27 - DCG1803507BAXXAB
			M28 - DCG1803507BXSXAA
			M29 - DCG1803507BXXXAA
			M30 - DCG1803507BXXXAB

Condenser & Evaporator Assembly



Condenser & Evaporator Assembly

Ref. Part
No: No:

Description:

Ref. Part
No: No:

Description:

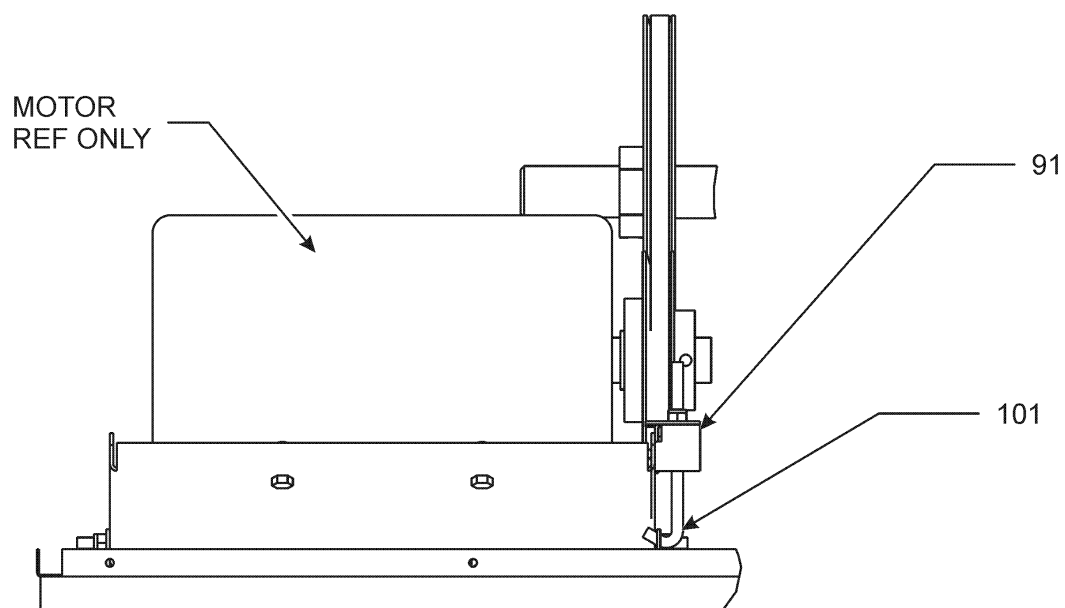
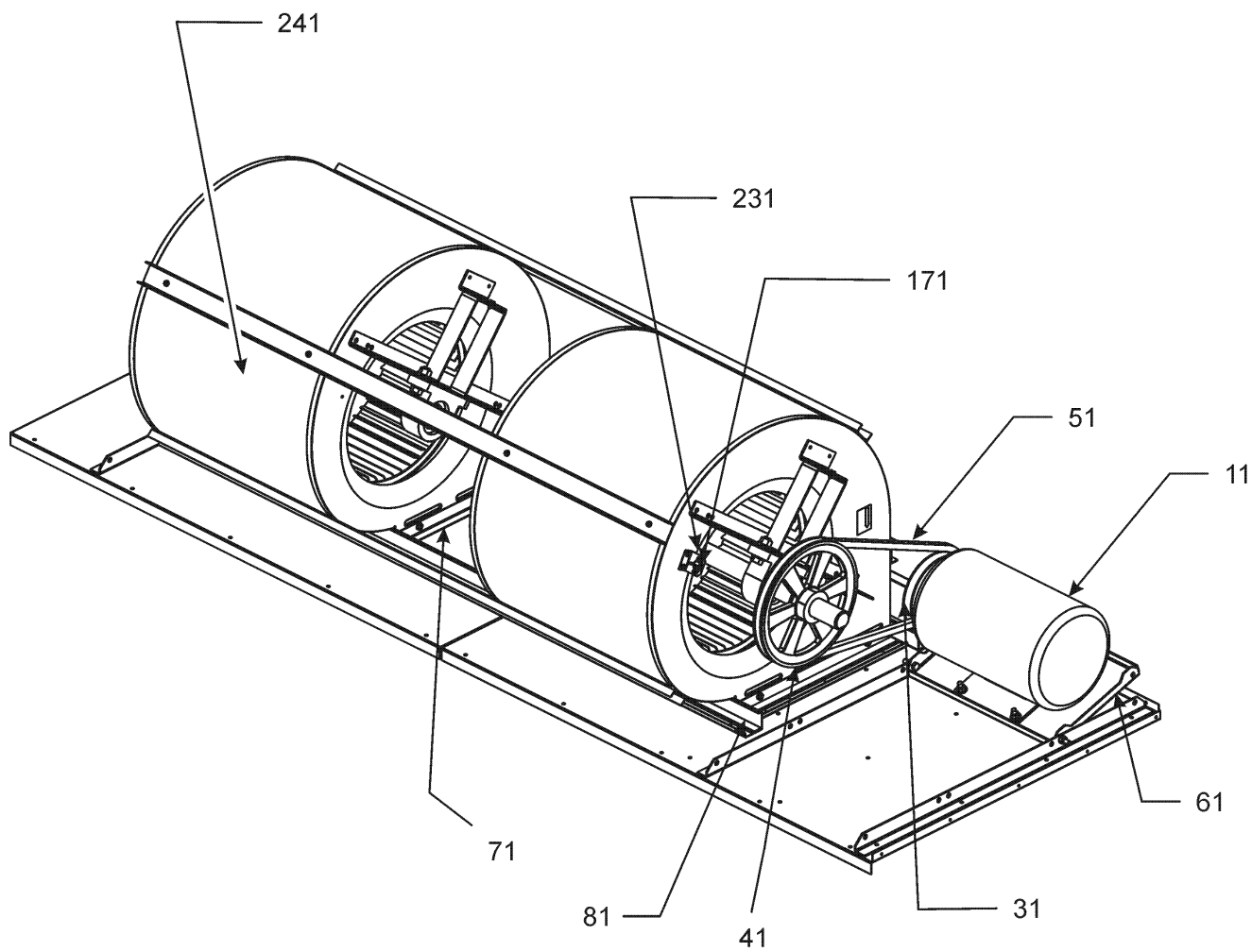
Image 1:

21	0201L00123	CONDENSER COIL ASSY, C1
31	0201L00124	CONDENSER COIL ASSY C2
41	0121L01154	BRACKET, CONDENSER END C1
51	0121L01156	BRACKET, CONDENSER END C2
61	0121L00572	CONDENSER BLOCKOFF, INSIDE TOP
71	0121L01155	BRACKET, COND/POST C1
81	0121L01153	BRACKET, COND/POST C2
101	0121L01037	ANGLE, TOP BRACE (QTY 2)
211	0202L00047	EVAPORATOR COIL ASSY (QTY 2)
221	0121L00698	EVAPORATOR BLOCKOFF PANEL
231	0121L00848	PANEL-EVAPORATOR, SMOKE DET
251	0121L00933	ANGLE-FILTER, LEFT VERTICAL
261	0121L00629	TOP FILTER RACK (M25)
261	0121L01180	TOP FILTER RACK (M1, M2, M3, M4, M5, M6, M7, M8, M9, M10, M11, M12, M13, M14, M15, M16, M17, M18, M19, M20, M21, M22, M23, M24, M26, M27, M28, M29, M30)
271	0121L00701	BOTTOM FILTER RACK (M25)
271	0121L01179	BOTTOM FILTER RACK (M1, M2, M3, M4, M5, M6, M7, M8, M9, M10, M11, M12, M13, M14, M15, M16, M17, M18, M19, M20, M21, M22, M23, M24, M26, M27, M28, M29, M30)
301	0270L00230	CENTER FILTER RACK (M25)
301	0270L00658	CENTER FILTER RACK (M1, M2, M3, M4, M5, M6, M7, M8, M9, M10, M11, M12, M13, M14, M15, M16, M17, M18, M19, M20, M21, M22, M23, M24, M26, M27, M28, M29, M30)
311	0121L00632	FILTER SUPPORT ANGLE
321	0121L00634	TOP ANGLE BRACKET
331	0270L00271	WELDMENT-TOP SLIDER (M25)
341	0270L00232	CENTER SLIDER (M25)
341	0270L00658	CENTER SLIDER (M1, M2, M3, M4, M5, M6, M7, M8, M9, M10, M11, M12, M13, M14, M15, M16, M17, M18, M19, M20, M21, M22, M23, M24, M26, M27, M28, M29, M30)
351	0121L00703	BOTTOM BLOCKOFF, FILTER RACK
371	0121L00640	FILTER PULL (QTY 2)
391	0121L00702	RIGHT SIDE BLOCKOFF, FILTER RACK (M25)
NS	0160L00137	Air Filter 20x25x2 (QTY 6)
NS	FRK180300	FILTER RACK ASSY (M1, M2, M3, M4, M5, M6, M7, M8, M9, M10, M11, M12, M13, M14, M15, M16, M17, M18, M19, M20, M21, M22, M23, M24, M26, M27, M28, M29, M30)

Expanded Model Nomenclature

M1 - DCG1803503BAXCAA
M2 - DCG1803503BAXDAA
M3 - DCG1803503BAXXAA
M4 - DCG1803503BHXFAA
M5 - DCG1803503BHXXAA
M6 - DCG1803503BJXBAA
M7 - DCG1803503BJXGAA
M8 - DCG1803503BJXNAA
M9 - DCG1803503BXSXAA
M10 - DCG1803503BXXBAA
M11 - DCG1803503BXXEAA
M12 - DCG1803503BXXHAA
M13 - DCG1803503BXXXAA
M14 - DCG1803504BAXAAB
M15 - DCG1803504BHXAAB
M16 - DCG1803504BHXNAB
M17 - DCG1803504BHXXAB
M18 - DCG1803504BJXBAB
M19 - DCG1803504BJXGAA
M20 - DCG1803504BJXJAB
M21 - DCG1803504BJXNAB
M22 - DCG1803504BJXOAB
M23 - DCG1803504BVXXAB
M24 - DCG1803504BXSXAB
M25 - DCG1803504BXXXAA
M26 - DCG1803504BXXXAB
M27 - DCG1803507BAXXAB
M28 - DCG1803507BXSXAA
M29 - DCG1803507BXXXAA
M30 - DCG1803507BXXXAB

Blower Assembly



Blower Assembly

Ref. Part No: No:	Description:	Ref. Part No: No:	Description:
-------------------	--------------	-------------------	--------------

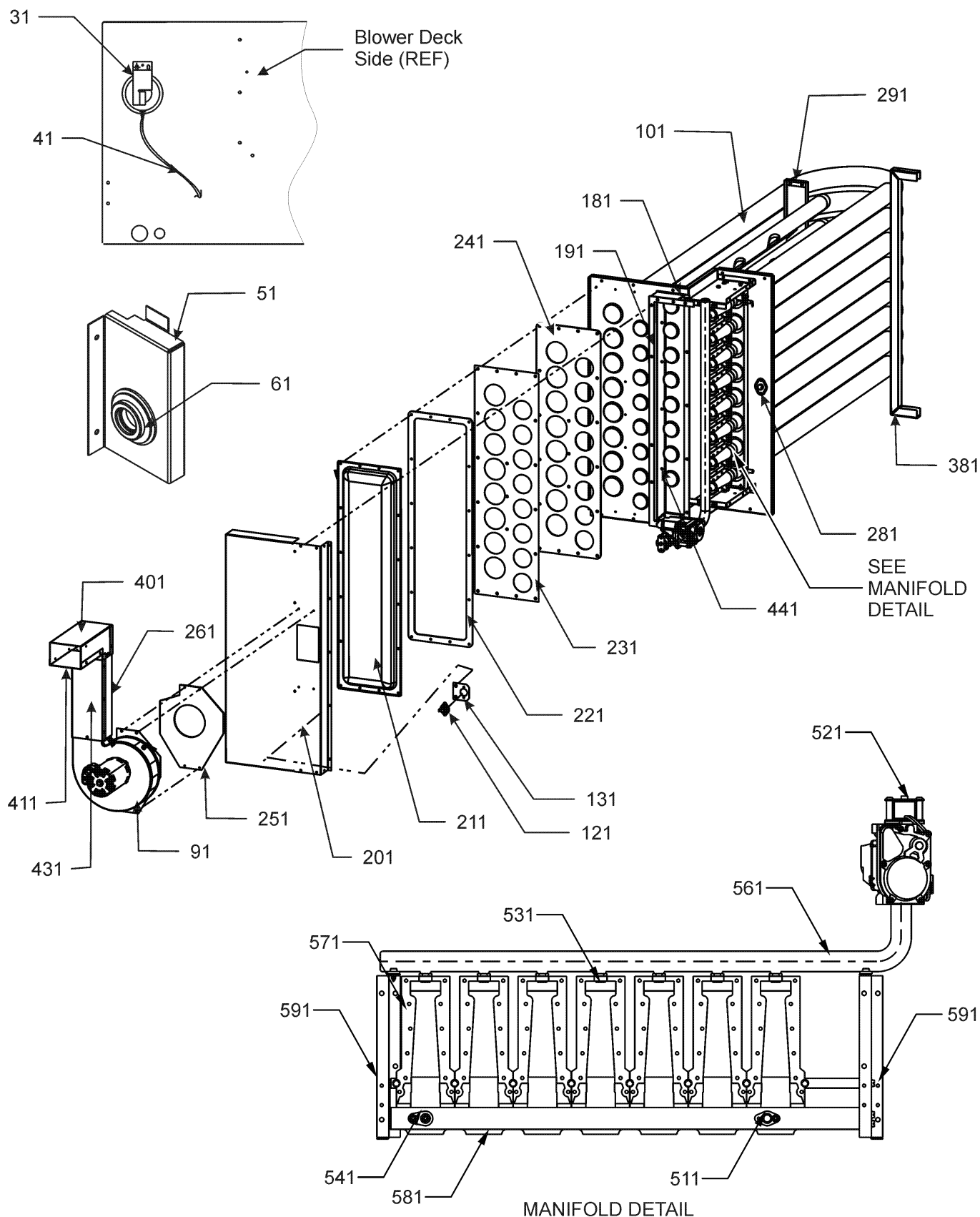
Image 1:

11	0131M00274	COND MOTOR 5.0 HP (M1, M2, M3, M4, M5, M6, M7, M8, M9, M10, M11, M12, M13, M14, M15, M16, M17, M18, M19, M20, M21, M22, M23, M24, M25, M26)
11	0131L00007	MOTOR-5 HP BELT DRIVE 575V 3P (M27, M28, M29, M30)
31	0163L00035	VARIABLE PITCH SHEAVE
41	0163L00140	SHEAVE, FIXED BK90H
51	0164L00008	FAN BELT, NOTCHED
61	0121L00555	MOTOR BASE PLATE (M25)
71	0121L00482	BLOWER SIDE ANGLE (QTY 4)
81	0121L00654	BLOWER RAIL (QTY 2)
91	0121L00557	MOTOR ADJUST BRACKET (M25)
101	0163L00034	HOOKED BOLT (M25)
171	0130M00064	LIMIT
231	0121L00594	SECONDARY LIMIT BRACKET
241	0271L00026	150-12R BD 1.18 TWIN BLOWER

Expanded Model Nomenclature

- M1 - DCG1803503BAXCAA
- M2 - DCG1803503BAXDAA
- M3 - DCG1803503BAXXAA
- M4 - DCG1803503BHXF AA
- M5 - DCG1803503BHXXAA
- M6 - DCG1803503BJXBAA
- M7 - DCG1803503BJXGAA
- M8 - DCG1803503BJXNAA
- M9 - DCG1803503BXSXAA
- M10 - DCG1803503BXXBAA
- M11 - DCG1803503BXXEAA
- M12 - DCG1803503BXXHAA
- M13 - DCG1803503BXXXAA
- M14 - DCG1803504BAXAAB
- M15 - DCG1803504BHXAAB
- M16 - DCG1803504BHXNAB
- M17 - DCG1803504BHXXAB
- M18 - DCG1803504BJXBAB
- M19 - DCG1803504BJXGAA
- M20 - DCG1803504BJXJAB
- M21 - DCG1803504BJXNAB
- M22 - DCG1803504BJXOAB
- M23 - DCG1803504BVXXAB
- M24 - DCG1803504BXSXAB
- M25 - DCG1803504BXXXAA
- M26 - DCG1803504BXXXAB
- M27 - DCG1803507BAXXAB
- M28 - DCG1803507BXSXAA
- M29 - DCG1803507BXXXAA
- M30 - DCG1803507BXXXAB

Heat Exchanger & Burner Assembly



Heat Exchanger & Burner Assembly

Ref. Part No: No:	Description:	Ref. Part No: No:	Description:
Image 1:		Expanded Model Nomenclature	
31	11112501		PRESSURE SWITCH
41	A3468601		PRESSURE SWITCH HOSE
51	0121L00697		GAS VALVE PIPE BRACKET
61	B1910013		GAS LINE GROMMET
91	0131L00014		VENT MOTOR
101	0270L00236		PARTITION TUBE ASSY 7B (M1, M2, M3, M4, M5, M6, M7, M8, M10, M11, M12, M13, M14, M15, M16, M17, M18, M19, M20, M21, M22, M23, M25, M26, M27, M29, M30)
101	0270L00237		PARTITION TUBE ASSY 7B, SS (M9, M24, M28)
121	10123529		MANUAL RESET LIMIT-GREEN
131	0121L00053		FLAME ROLLOUT BRACKET
181	0154L00026		INNER COLLECTOR BOX GASKET
191	0154L00027		OUTER COLLECTOR BOX GASKET
201	0121L00707		COVER-COLLECTOR BOX 7
211	0121L00545		COVER-REAR
221	0154L00025		COVER GASKET
231	0121L00548		PLATE-TUBE PANEL
241	0154L00028		TUBE PANEL GASKET
251	0154L00029		ID BLOWER GASKET
261	0121L00668		FLUE WRAPPER, BACK
281	20162904		PRIMARY LIMIT-TEMPERATURE CONTROL
291	0121L00808		SUPPORT-HEAT TUBES
381	0121L00930		SUPPORT-HEAT TUBES 2.25
401	0121L00670		FLUE WRAPPER EXIT
411	0121L00671		FLUE COVER EXIT
431	0121L00669		FLUE COVER, FRONT
441	0121L00546		CHANNEL-COLLECTOR BOX
511	20261709		IGNITOR
521	0151M00015		VALVE, GAS (HW) VR83
531	0163L00014		ORIFICE (QTY 7)
541	0130F00010		FLAME SENSOR
561	0163L00051		GAS MANIFOLD, 7 BURNER
571	0163L00000		BECKETT BURNER (QTY 7)
581	0121L00656		BRACKET-7 BURNERS
591	0121G00268		BRACKET-BURNER TOP/BOT (QTY 2)
NS	0163L00040		FLUE SCREEN
		M1 - DCG1803503BAXCAA	
		M2 - DCG1803503BAXDAA	
		M3 - DCG1803503BAXXAA	
		M4 - DCG1803503BHXFAA	
		M5 - DCG1803503BHXXAA	
		M6 - DCG1803503BJXBAA	
		M7 - DCG1803503BJXGAA	
		M8 - DCG1803503BJXNAA	
		M9 - DCG1803503BXSXAA	
		M10 - DCG1803503BXXBAA	
		M11 - DCG1803503BXXEAA	
		M12 - DCG1803503BXXHAA	
		M13 - DCG1803503BXXXAA	
		M14 - DCG1803504BAXAAB	
		M15 - DCG1803504BHXAAB	
		M16 - DCG1803504BHXNAB	
		M17 - DCG1803504BHXXAB	
		M18 - DCG1803504BJXBAB	
		M19 - DCG1803504BJXGAA	
		M20 - DCG1803504BJXJAB	
		M21 - DCG1803504BJXNAB	
		M22 - DCG1803504BJXOAB	
		M23 - DCG1803504BVXXAB	
		M24 - DCG1803504BXSXAB	
		M25 - DCG1803504BXXXAA	
		M26 - DCG1803504BXXXAB	
		M27 - DCG1803507BAXXAB	
		M28 - DCG1803507BXSXAA	
		M29 - DCG1803507BXXXAA	
		M30 - DCG1803507BXXXAB	

Control Box & Capacitor Assembly

IMAGE 1

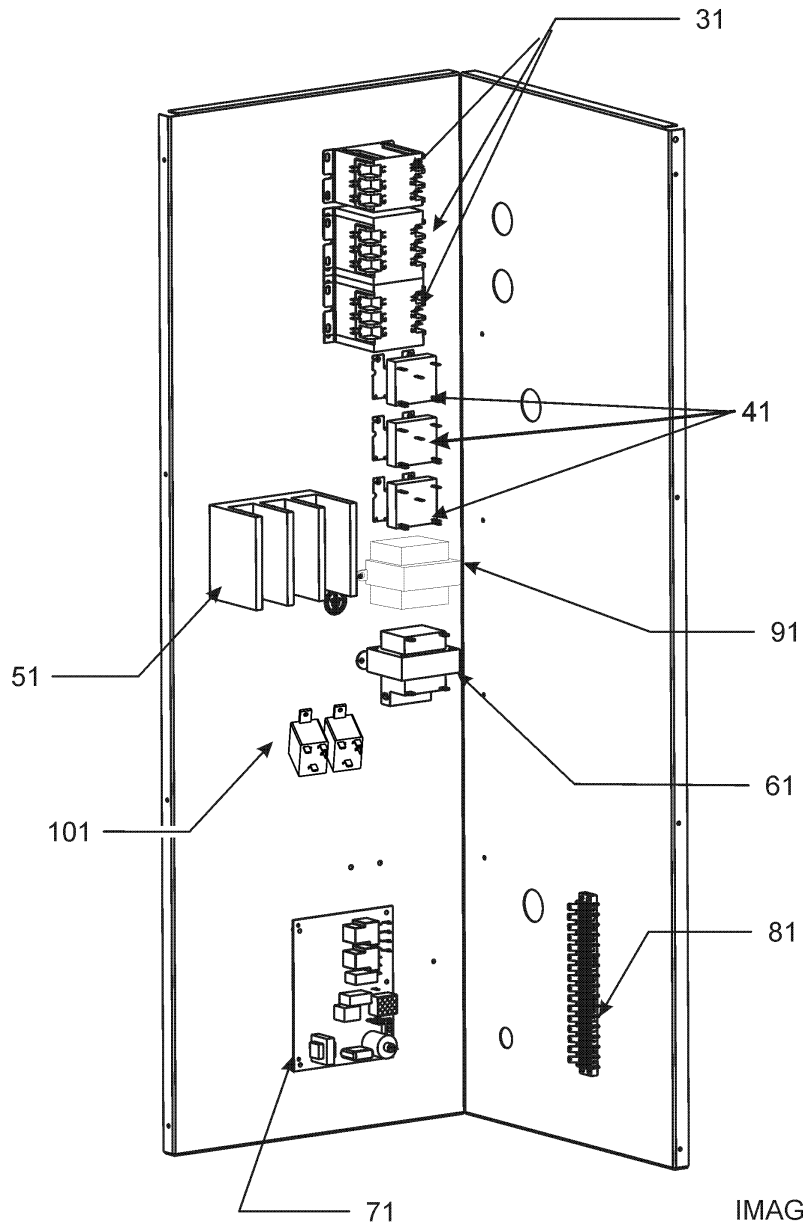
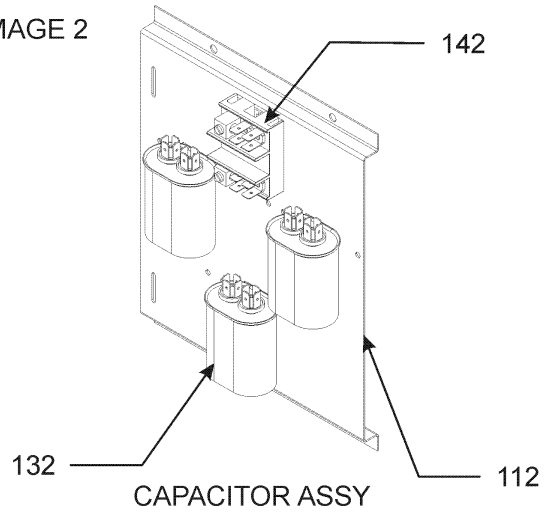


IMAGE 2



Control Box & Capacitor Assembly

Ref. Part
No: No:

Description:

Ref. Part
No: No:

Description:

Image 1:

31	CONT3P030024V	CONTACTOR 30 AMP, 3P, 24V (M14, M15, M16, M17, M18, M19, M20, M21, M22, M23, M24, M25, M26, M27, M28, M29, M30)
31	CONT3P040024V	CONTACTOR 40 AMP, 3P, 24V (M1, M2, M3, M4, M5, M6, M7, M8, M9, M10, M11, M12, M13)
41	0130M00025	24V RELAY (QTY 3)
51	0130M00042	BLOCK, POWER (M1, M2, M3, M4, M5, M6, M7, M8, M9, M10, M11, M12, M13)
61	0130M00144	TRANSFORMER (M1, M2, M3, M4, M5, M6, M7, M8, M9, M10, M11, M12, M13)
61	0130M00145	TRANSFORMER 480V to 24V, 75VA (M14, M15, M16, M17, M18, M19, M20, M21, M22, M23, M24, M25, M26)
61	0130M00148	TRANSFORMER 575V to 24V, 75VA (M27, M28, M29, M30)
71	PCBAG123	IGNITION BOARD, DSI INTEGRATED
81	0130M00038	TERMINAL BOARD
91	0130M00146	TRANSFORMER 480V TO 230V, 150VA (M14, M15, M16, M17, M18, M19, M20, M21, M22, M23, M24, M25, M26)
91	0130M00147	TRANSFORMER 575V TO 230V, 150VA (M27, M28, M29, M30)
101	0130M00242	RELAY, 24V (QTY 2)
NS	0159L00052	HARNESS JUMPER LONG (M1, M2, M3, M4, M5, M6, M7, M8, M9, M10, M11, M12, M13)
NS	0259L00134	HARNESS, 12 PIN GAS
NS	0259L00135	HARNESS, CONTROL GAS
NS	0159L00051	HARNESS, JUMPER SHORT (M1, M2, M3, M4, M5, M6, M7, M8, M9, M10, M11, M12, M13)
NS	0259L00101	MOTOR HARNESS-BELT DRIVE
NS	0259L00136	WIRE HARNESS ASSY

Image 2:

112	0121L00585	CAPACITOR MOUNTING PLATE
132	CAP100000370LA	CAPACITOR 10/370V (M1, M2, M3, M4, M5, M6, M7, M8, M9, M10, M11, M12, M13, M14, M15, M16, M17, M18, M20, M21, M22, M23, M24, M26)
132	CAP050000370LA	CAPACITOR 5/370V (M19, M25, M28, M29)
132	CAP050000440LA	CAPACITOR 5/440V (M27, M30)
142	B1368250	TERMINAL BLOCK (HIGH VOLTAGE)
NS	0121L00586	CAPACITOR COVER
NS	20520901	CAPACITOR STRAP (QTY 3)
NS	0259L00118	CONDENSER FAN HARNESS, LONG
NS	0259L00117	CONDENSER FAN HARNESS, MEDIUM
NS	0259L00116	CONDENSER FAN HARNESS, SHORT
NS	0259L00164	HARNESS, ECONOMIZER AC

Expanded Model Nomenclature

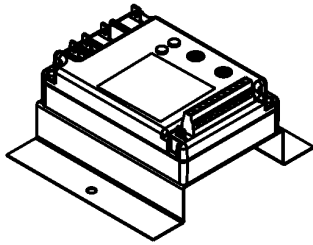
M1 - DCG1803503BAXCAA
M2 - DCG1803503BAXDAA
M3 - DCG1803503BAXXAA
M4 - DCG1803503BHXF AA
M5 - DCG1803503BHXXAA
M6 - DCG1803503BJXBAA
M7 - DCG1803503BJXGAA
M8 - DCG1803503BJXNAA
M9 - DCG1803503BXSXAA
M10 - DCG1803503BXXBAA
M11 - DCG1803503BXXEAA
M12 - DCG1803503BXXHAA
M13 - DCG1803503BXXXAA
M14 - DCG1803504BAXAAB
M15 - DCG1803504BHXAAB
M16 - DCG1803504BHXNAB
M17 - DCG1803504BHXXAB
M18 - DCG1803504BJXBAB
M19 - DCG1803504BJXGAA
M20 - DCG1803504BJXJAB
M21 - DCG1803504BJXNAB
M22 - DCG1803504BJXOAB
M23 - DCG1803504BVXXAB
M24 - DCG1803504BXSXAB
M25 - DCG1803504BXXXAA
M26 - DCG1803504BXXXAB
M27 - DCG1803507BAXXAB
M28 - DCG1803507BXSXAA
M29 - DCG1803507BXXXAA
M30 - DCG1803507BXXXAB

Accessory Parts List

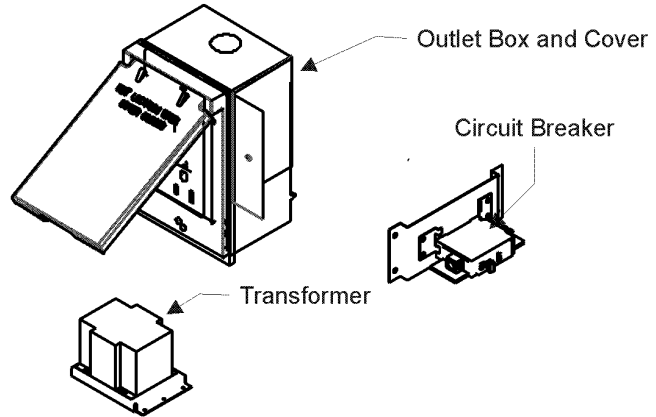
ACCESSORY PARTS LIST

NOTE: NOT ALL OPTIONS AVAILABLE FOR ALL PRODUCTS

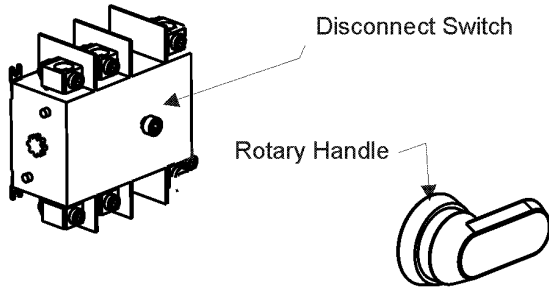
1 LOW AMBIENT KITS



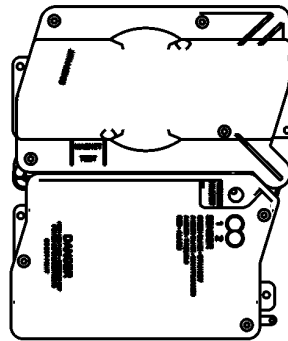
2 GFCI CONVENIENCE OUTLET



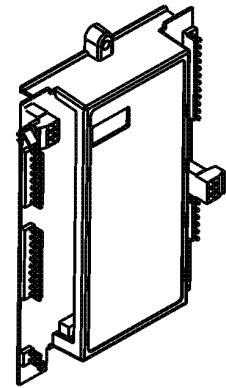
3 DISCONNECT MODULE (NON-FUSED)



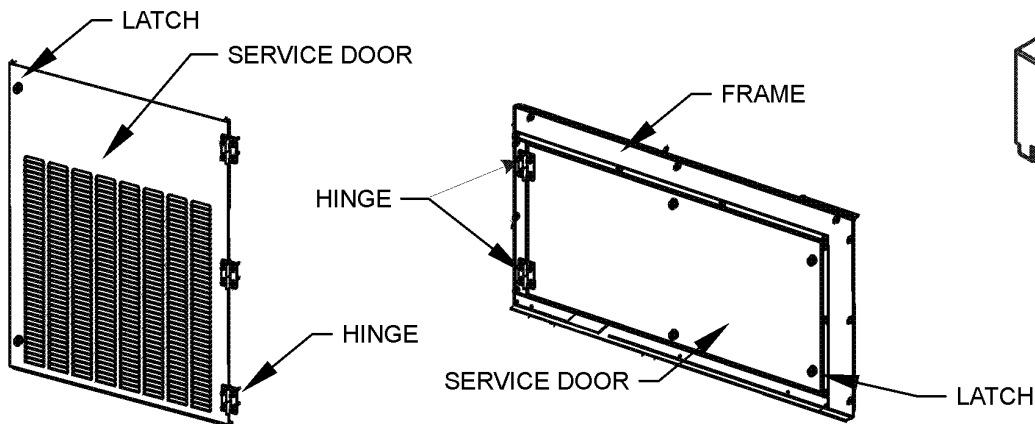
4 SMOKE DETECTORS



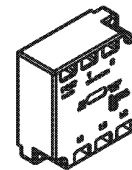
5 DDC CONTROL



6 HINGED DOOR ASSEMBLIES



7 PHASE MONITOR



Accessory Parts List

Ref. Part No:	Description:	Ref. Part No:	Description:
Image 1:		Expanded Model Nomenclature	
NS 0121L00316	BRACKET-CONV OUTLET MOUNT (M4, M7, M12, M14, M15, M19, M20)	M1 - DCG1803503BAXCAA	
NS 0121L00855	BRACKET-DISCONNECT SWITCH (M4, M5, M15, M16, M17, M18, M19, M20, M21, M22)	M2 - DCG1803503BAXDAA	
NS 0121L01053	BRACKET-SMOKE DETECTOR (M2, M7, M8, M16, M19, M21)	M3 - DCG1803503BAXXAA	
NS 0130M00065	CIRCUIT BREAKER, CONVENIENCE OUTLET (M6, M8, M10, M16, M18, M21, M22)	M4 - DCG1803503BHXF AA	
NS 0121L00839NG	DISCONNECT COVER (M4, M5, M6, M7, M8, M15, M16, M17, M18, M19, M20, M21, M22)	M5 - DCG1803503BHXXAA	
NS 0130L00012	GANG BOX-GFCI OUTLET (M4, M7, M12, M14, M15, M19, M20)	M6 - DCG1803503BJXBAA	
NS 0130L00039	HANDLE, ROTARY (M6, M7, M8)	M7 - DCG1803503BJXGAA	
NS LAKT03	LOW AMBIENT KIT (M1, M4)	M8 - DCG1803503BJXNAA	
NS 0161G00012	POWER OUTLET BOX (M4, M7, M12, M14, M15, M19, M20)	M9 - DCG1803503BXSXAA	
NS 0130L00103	RECEPTACLE-GFCI OUTLET (M4, M7, M12, M14, M15, M19, M20)	M10 - DCG1803503BXXBAA	
NS 0130L00058	SHAFT, CUT (M5)	M11 - DCG1803503BXXEAA	
NS 0130L00059	SHAFT, CUT (M4, M15, M16, M17, M18, M19, M20, M21, M22)	M12 - DCG1803503BXXHAA	
NS 0130L00049	SHAFT, DISCONNECT (M4, M5, M6, M7, M8, M15, M16, M17, M18, M19, M20, M21, M22)	M13 - DCG1803503BXXXAA	
NS D4120	SMOKE DETECTOR, PHOTO 4WIRE (M2, M7, M8, M16, M19, M21)	M14 - DCG1803504BAXAAB	
NS D4S	SMOKE DETECTOR, SENSOR ONLY (M20, M22)	M15 - DCG1803504BHXAAB	
NS 0130L00027	SWITCH-DISCONNECT 100A (M6, M7, M8)	M16 - DCG1803504BHXNAB	
NS 0130L00046	SWITCH-DISCONNECT 60A (M4, M15, M16, M17, M18, M19, M20, M21, M22)	M17 - DCG1803504BHXXAB	
NS 0130M00061	TRANSFORMER, CONVENIENCE OUTLET (M6, M8, M10, M16, M18, M21, M22)	M18 - DCG1803504BJXBAB	
		M19 - DCG1803504BJXGAA	
		M20 - DCG1803504BJXJAB	
		M21 - DCG1803504BJXNAB	
		M22 - DCG1803504BJXOAB	
		M23 - DCG1803504BVXXAB	
		M24 - DCG1803504BXSXAB	
		M25 - DCG1803504BXXXAA	
		M26 - DCG1803504BXXXAB	
		M27 - DCG1803507BAXXAB	
		M28 - DCG1803507BXSXAA	
		M29 - DCG1803507BXXXAA	
		M30 - DCG1803507BXXXAB	