

Commercial 12.5 Ton High Static 2-Speed Package Gas Unit

DCG1502103WHXBBA
DCG1502103WAXXBA
DCG1502103WHDGBA
DCG1502103WHXCBA
DCG1502103WJSNBA
DCG1502103WJXDBA
DCG1502103WRKBBA
DCG1502103WRKZBA
DCG1502103WRSNBA
DCG1502103WRXABA
DCG1502103WVBXBA
DCG1502103WVDCBA
DCG1502103WWDCBA
DCG1502103WWKFBA
DCG1502103WWXNBA
DCG1502103WXXXBA
DCG1502104WJMTBA
DCG1502104WMSBBA
DCG1502104WVXXBA
DCG1502104WWDOBA
DCG1502104WWDZBA
DCG1502104WWSXBA
DCG1502104WWXPBA
DCG1502104WXXXBA
DCG1502107WHXXBA
DCG1502107WVXXBA
DCG1502107WXXXBA



This manual is to be used by qualified technicians only.

This manual replaces RP-D1215D.

Important Information

Index

Functional Parts List	3
Illustration and Parts	4 - 17

Views shown are for parts illustrations only, not servicing procedures

Text Codes:

AR - As Required

NA - Not Available

NS - Not Shown

00000000 - See Note

QTY - Quantity Example (QTY 3) (If Quantity not shown, Quantity = 1)

M - Model Example (M1) (If M Code not shown, then part is used on all Models)

Expanded Model Nomenclature:

Example M1 - Model#1 M2 - Model#2 M3 - Model#3

Daikin Company, L.P. is not responsible for personal injury or property damage resulting from improper service. Review all service information before beginning repairs.

Warranty service must be performed by an authorized technician, using authorized factory parts. If service is required after the warranty expires, Daikin Company, L.P. also recommends contacting an authorized technician and using authorized factory parts.

Daikin Company, L.P. reserves the right to discontinue, or change at any time, specifications or designs without notice or without incurring obligations.

For assistance within the U.S.A. contact:

Equipment Support
Daikin North America, LLC
19001 Kermier Road
Waller, Texas 77484
855-770-5678-Telephone
713-863-2382-Facsimile

For assistance outside the U.S.A. contact:

International Division
Daikin North America, LLC
19001 Kermier Road
Waller, Texas 77484
713-861-2500-Telephone
713-863-2382-Facsimile

Functional Parts

Part

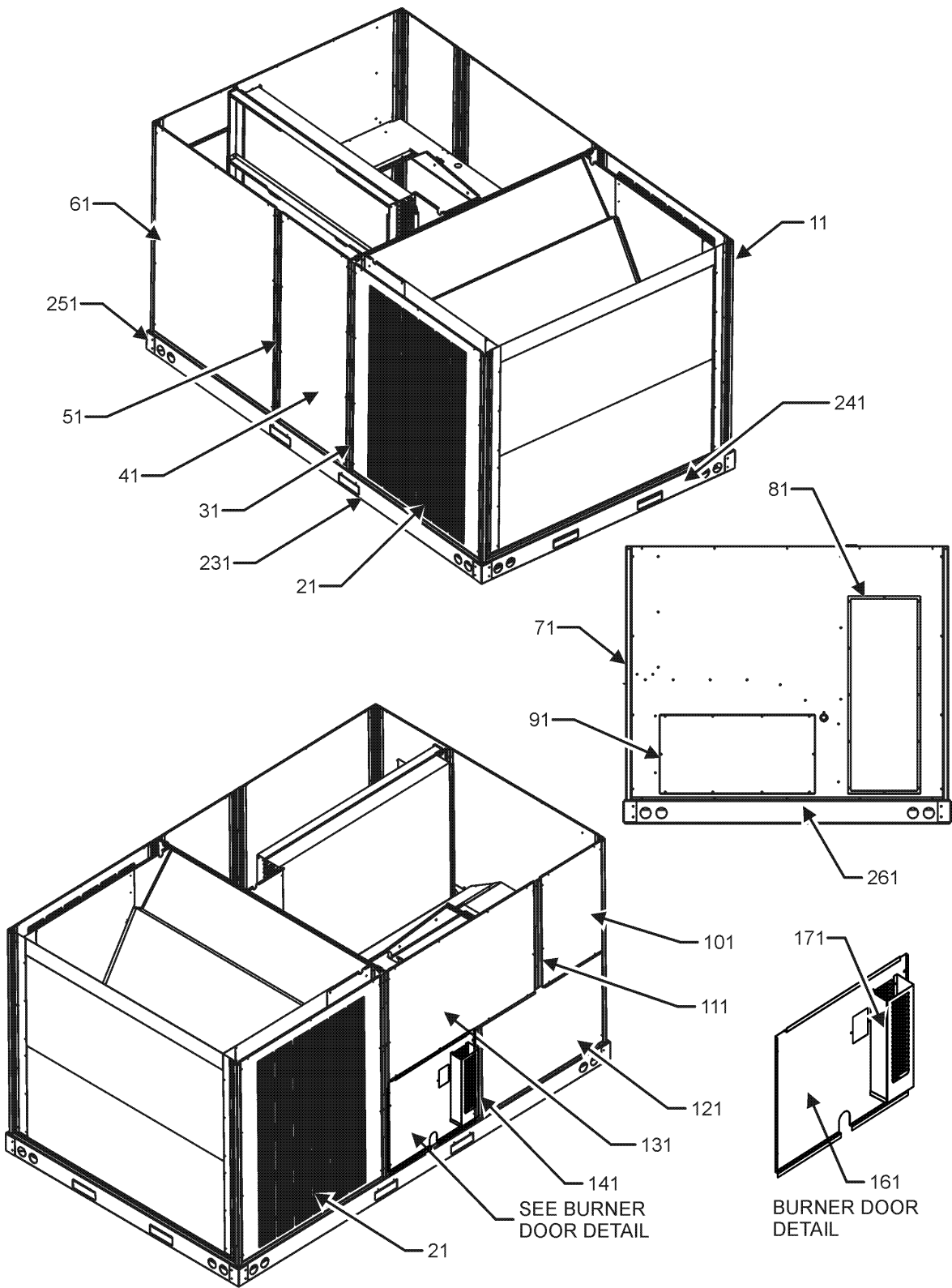
No: Description:

0150L00003	BLADE-FAN 22" ALUM. CCW 30 DEG (QTY 2)
16220-3	BLOCK, POWER
CAP050000440LA	CAPACITOR (M25, M26, M27)
CAP100000370LA	CAPACITOR 10/370V (M1, M2, M3, M4, M5, M6, M7, M8, M9, M10, M11, M12, M13, M14, M15, M16, M17, M18, M19, M20, M21, M22, M23, M24)
ZP67KCETFD130	COMP, 67000,460/60/3 (M17, M18, M19, M20, M21, M22, M23, M24)
ZP67KCETF5130	COMP, 67500,200/230/60/3 (M1, M2, M3, M4, M5, M6, M7, M8, M9, M10, M11, M12, M13, M14, M15, M16)
ZP67KCETFE130	COMP, 67500,575/60/3 (M25, M26, M27)
CONT3P030024V	CONTACTOR 30 AMP, 3P, 24V (QTY 4)
0259L00368	CURRENT SWITCH WITH TERMS (M7, M8, M9, M10, M18)
0130L00112	Duct Temp Sensor (M7, M8, M9, M10, M18)
0164L00002	FAN BELT, NOTCHED
0151M00012	FILTER/DRIER BI-FLOW (QTY 2)
0130F00010	FLAME SENSOR
0151L00000	GAS VALVE (36H)
0130M00074	HIGH PRESSURE SWITCH (QTY 2)
PCBAG123	IGNITION BOARD, DSI INTEGRATED
20261709	IGNITOR
0130M00075	LOW PRESSURE SWITCH (QTY 2)
10123532	MANUAL RESET LIMIT 350°F
0131M00842	MOTOR, 1/3 HP, OD (M25, M26, M27)
0131M00840	MOTOR, 1/3 HP, OD (M1, M2, M3, M5, M6, M7, M8, M9, M10, M11, M15, M16)
0131M00841	MOTOR, 1/3 HP, OD (M18, M19, M20, M21, M22, M23, M24)
0131L00073	MOTOR, 3 PH, 5HP (M1, M2, M3, M4, M5, M6, M7, M8, M9, M10, M11, M12, M13, M14, M15, M16)
0131L00074	MOTOR, 3 PH, 5HP (M17, M18, M19, M20, M21, M22, M23, M24)
0131L00075	Motor, 3ph, 5hp (M25, M26, M27)
0130L00108	OD Air Temp Sensor (M7, M8, M9, M10, M18)
PCBCG103	PCB, CONTROL, HP, GAS, AC (M7, M8, M9, M10, M18)
11112501	PRESSURE SWITCH
0130F00036	PRIMARY LIMIT - PINK
B1370187	PRIMARY LIMIT SWITCH 160°F
10135604	RELAY (QTY 2)
0130M00242	RELAY, 24V (QTY 2)
0130M00025	RELAY, SPDT
0130M00038	TERMINAL BOARD
0130M00274	TERMINAL BOARD (M7, M8, M9, M10, M18)
0130M00275	TERMINAL BOARD (M7, M8, M9, M10, M18)
0130M00596	TRANS, 150VA, 480V TO 230V (M17, M18, M19, M20, M21, M22, M23, M24)
0130M00597	TRANS, 150VA, 575V TO 230V (M25, M26, M27)
0130M00594	TRANSFORMER (M1, M2, M3, M4, M5, M6, M7, M8, M9, M10, M11, M12, M13, M14, M15, M16)
0130M00595	TRANSFORMER, 75VA, 480V TO 24V (M17, M18, M19, M20, M21, M22, M23, M24)
0130M00598	TRANSFORMER, 75VA, 575V TO 24V (M25, M26, M27)
0131L00002	VENT MOTOR

Expanded Model Nomenclature

M1 - DCG1502103WAXXBA
M2 - DCG1502103WHDGBA
M3 - DCG1502103WHXBBA
M4 - DCG1502103WHXCBA
M5 - DCG1502103WJSNBA
M6 - DCG1502103WJXDDBA
M7 - DCG1502103WRKBBA
M8 - DCG1502103WRKZBA
M9 - DCG1502103WRSNBA
M10 - DCG1502103WRXABA
M11 - DCG1502103WVBXBA
M12 - DCG1502103WVDCBA
M13 - DCG1502103WWDCBA
M14 - DCG1502103WWKFBA
M15 - DCG1502103WWXNBA
M16 - DCG1502103WXXXBA
M17 - DCG1502104WJMTBA
M18 - DCG1502104WMSBBA
M19 - DCG1502104WVXXBA
M20 - DCG1502104WWDDBA
M21 - DCG1502104WWDZBA
M22 - DCG1502104WWSXBA
M23 - DCG1502104WWXPBA
M24 - DCG1502104WXXXBA
M25 - DCG1502107WHXXBA
M26 - DCG1502107WVXXBA
M27 - DCG1502107WXXXBA

Cabinet Assembly



Cabinet Assembly

Ref. Part No:	No:	Description:	Ref. Part No:	No:	Description:
Image 1:			Expanded Model Nomenclature		
11	0121L00979RFNG	CORNER POST (QTY 4)	M1	-	DCG1502103WAXXBA
11	0121L01421RFNG	CORNER POST, RF PAINTED (M2, M7, M8, M12, M13, M14, M17, M20, M21)	M2	-	DCG1502103WHDGBA
21	0152L00001	GRILLE-CONDENSER (QTY 2)	M3	-	DCG1502103WHXBBA
31	0121L00980RFNG	SIDE POST (M1, M3, M4, M5, M6, M9, M10, M11, M15, M16, M18, M19, M22, M23, M24, M25, M26, M27)	M4	-	DCG1502103WHXCBA
31	0121L01423RFNG	SIDE POST (M2, M7, M8, M12, M13, M14, M17, M20, M21)	M5	-	DCG1502103WJSNBA
41	0121L00759NG	FILTER DOOR	M6	-	DCG1502103WJXDBA
51	0121L00757RFNG	FILTER DOOR POST (M1, M3, M4, M5, M6, M9, M10, M11, M15, M16, M18, M19, M22, M23, M24, M25, M26, M27)	M7	-	DCG1502103WRKBBA
51	0121L01433RFNG	FILTER DOOR POST (M2, M7, M8, M12, M13, M14, M17, M20, M21)	M8	-	DCG1502103WRKZBA
61	0121L00378NG	ECONOMIZER DOOR (M2, M3, M4, M7, M8, M9, M10, M16, M18, M24, M25, M27)	M9	-	DCG1502103WRSNBA
71	0121L01287NG	DUCT PANEL (M1, M11, M12, M16, M19, M24, M26, M27)	M10	-	DCG1502103WRXABA
71	0121L01367NG	DUCT PANEL (M2, M3, M4, M5, M6, M7, M8, M9, M10, M13, M14, M15, M17, M18, M20, M21, M22, M23, M25)	M11	-	DCG1502103WV BXBA
81	0121L00082NG	RETURN DUCT COVER	M12	-	DCG1502103WVDCBA
91	0121L00099NG	SUPPLY DUCT COVER	M13	-	DCG1502103WWDCBA
101	0121L01078NG	CONTROL DOOR	M14	-	DCG1502103WWKFBA
111	0121L02305RFNG	RF, PAINTED CONTROL POST 12.5 (M1, M3, M4, M5, M6, M9, M10, M11, M15, M16, M18, M19, M22, M23, M24, M25, M26, M27)	M15	-	DCG1502103WWXNBA
111	0121L02518RFNG	RF, PNT CNTL POST HINGED 12.5 (M2, M7, M8, M12, M13, M14, M17, M20, M21)	M16	-	DCG1502103WXXXBA
121	0121L00767NG	ELECTRIC HEAT DOOR	M17	-	DCG1502104WJMTBA
131	0121L00819NG	BLOWER DOOR	M18	-	DCG1502104WMSBBA
141	0121L00765RFNG	BURNER BOX POST	M19	-	DCG1502104WVXXBA
161	0121L00766NG	BURNER DOOR	M20	-	DCG1502104WWDDBA
171	0121L00129	DOOR RAIN SHIELD	M21	-	DCG1502104WWDZBA
231	0121L01099RF	RAIL, BASE SIDES (QTY 2)	M22	-	DCG1502104WWSXBA
241	0121L00834RF	RAIL, BASE ENDS	M23	-	DCG1502104WWXPBA
251	0121G00301	BRACKET-RAIL CORNERS (QTY 4)	M24	-	DCG1502104WXXXBA
261	0121L00071RF	RAIL-BASE DUCT END	M25	-	DCG1502107WHXXBA
NS	0121L00727	ECONOMIZER COVER (M11, M12, M13, M14, M15, M19, M20, M21, M22, M23, M26)	M26	-	DCG1502107WVXXBA
NS	0121L01310	ECONOMIZER COVER (M1, M5, M6, M17)	M27	-	DCG1502107WXXXBA
NS	0164L00009	GASKET-RUBBER, CPOST (QTY 3)			
NS	0164L00011	GASKET-RUBBER, SIDE POST (QTY 5)			

Top Panel and Tubing Assembly

IMAGE 1

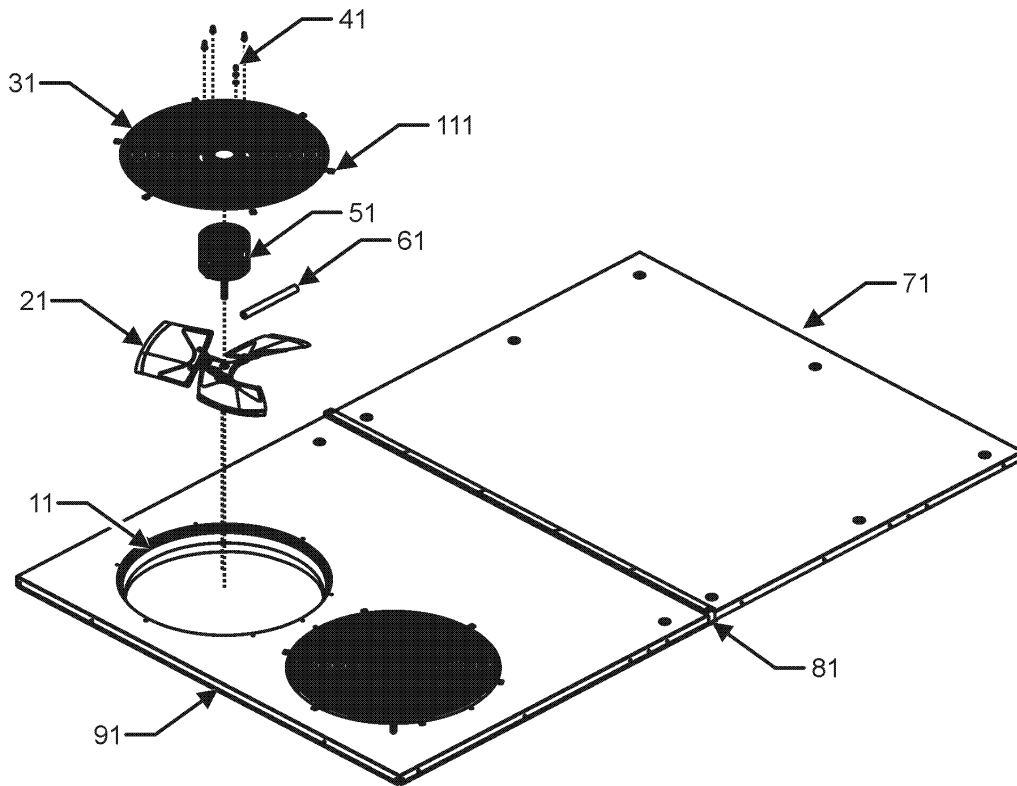
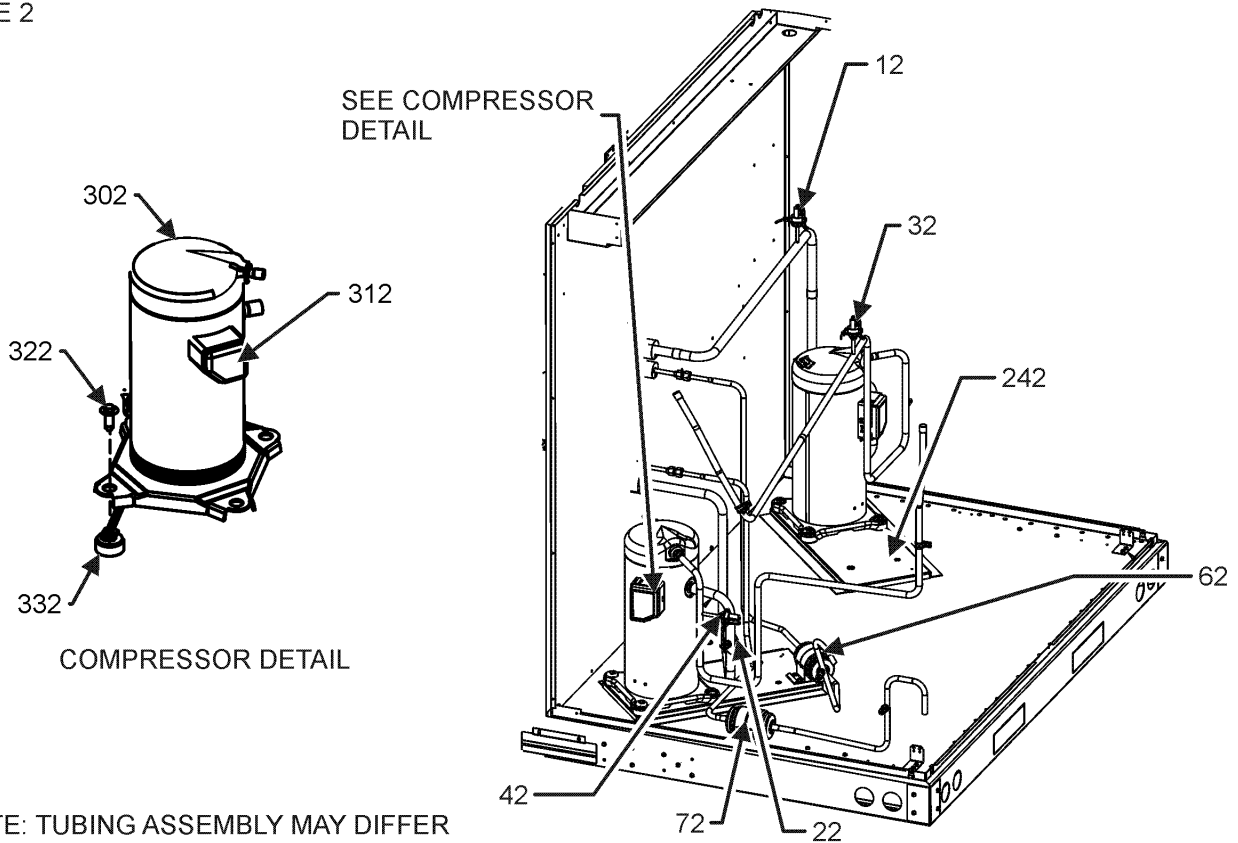


IMAGE 2



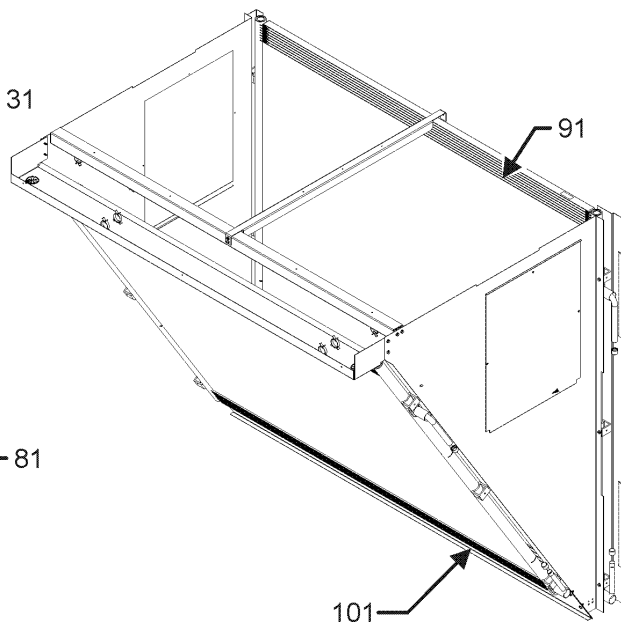
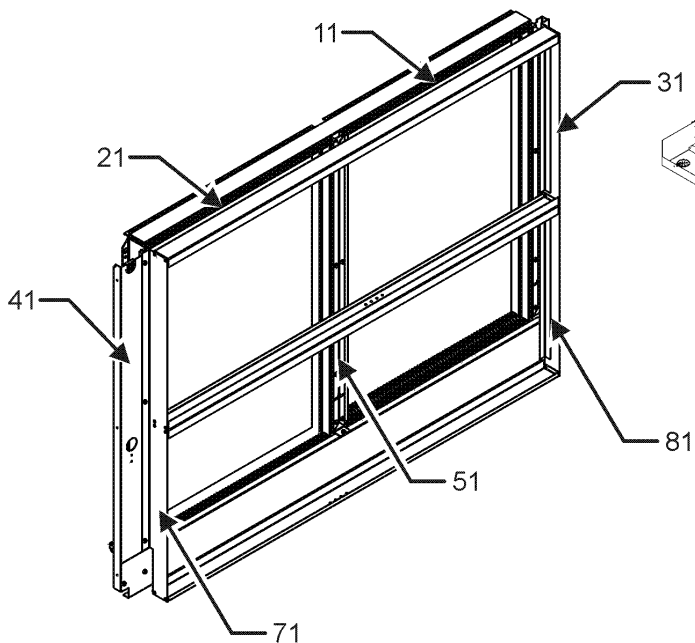
NOTE: TUBING ASSEMBLY MAY DIFFER FROM WHAT IS SHOWN

Top Panel and Tubing Assembly

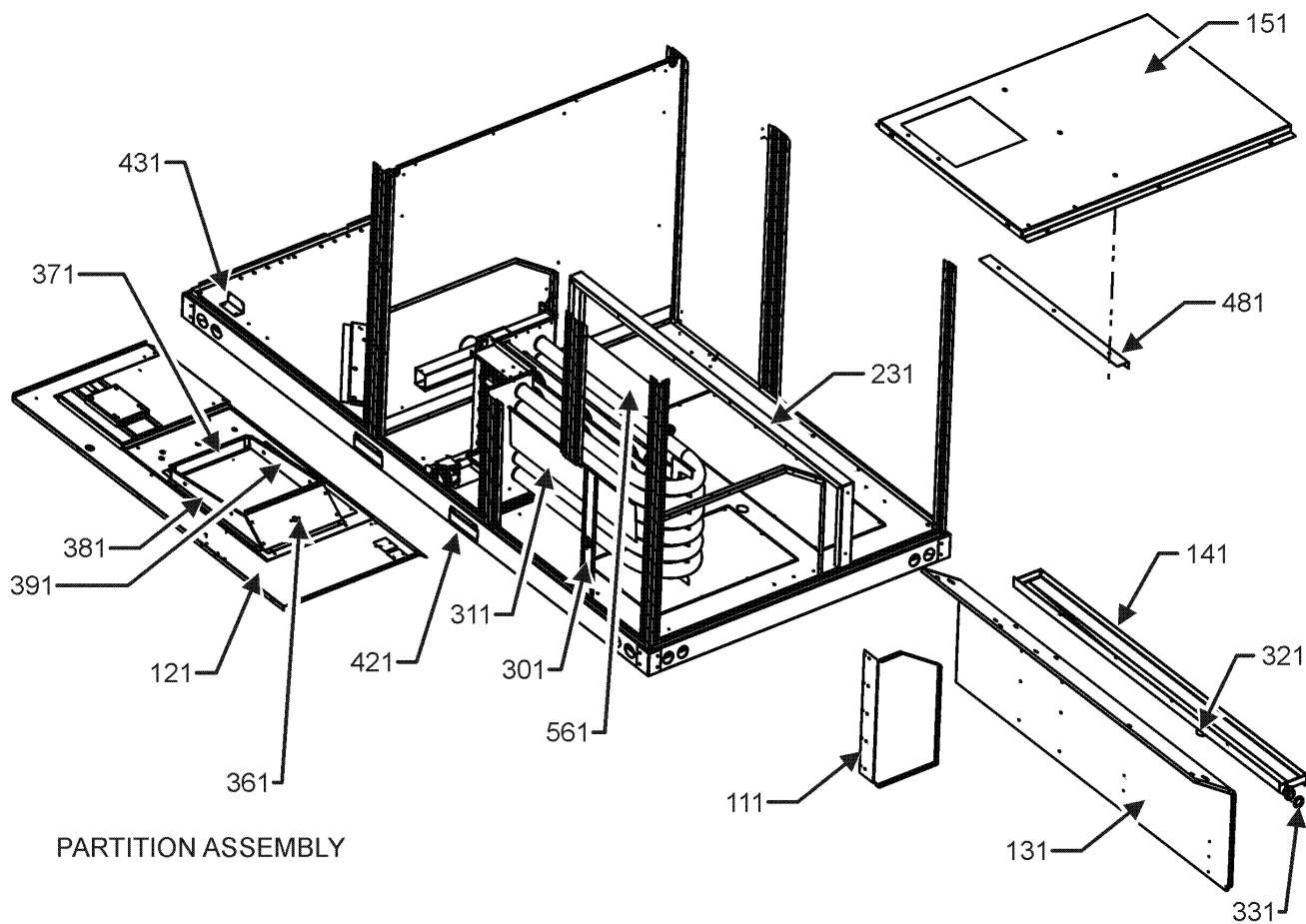
Ref. Part No:	Description:	Ref. Part No:	Description:
Image 1:		Expanded Model Nomenclature	
11	0161L00000 VENTURI RING 22" (QTY 2)	M1	DCG1502103WAXXBA
21	0150L00003 BLADE-FAN 22" ALUM. CCW 30 DEG (QTY 2)	M2	DCG1502103WHDGBA
31	0152G00000 FAN GRILLE, RAISED (QTY 2)	M3	DCG1502103WHXBBA
41	0163M00006P ACORN NUT 5/16 HEX BLACK (QTY 8)	M4	DCG1502103WHXCBA
51	0131M00840 MOTOR, 1/3 HP, OD (M1, M2, M3, M5, M6, M7, M8, M9, M10, M11, M15, M16)	M5	DCG1502103WJSNBA
51	0131M00841 MOTOR, 1/3 HP, OD (M18, M19, M20, M21, M22, M23, M24)	M6	DCG1502103WJXDBA
51	0131M00842 MOTOR, 1/3 HP, OD (M25, M26, M27)	M7	DCG1502103WRKBBA
51	0131L00064 MOTOR, COND, 1/3 HP, 208/230V (M4, M12, M13, M14)	M8	DCG1502103WRKZBA
51	0131L00065 MOTOR, COND, 1/3 HP, 460V (M17)	M9	DCG1502103WRSNBA
61	0161R00003P CONDUIT (QTY 2)	M10	DCG1502103WRXABA
71	0121L01119NG PAINTED TOP PANEL INDOOR	M11	DCG1502103WV BXBA
81	20455902 SPLICE GASKET .50 X .25 (QTY 11)	M12	DCG1502103WVDCBA
91	0121L01118NG PAINTED TOP PANEL OUTDOOR	M13	DCG1502103WWDCBA
111	0163M00005P WASHER, BLACK (.50 OD .218ID) (QTY 8)	M14	DCG1502103WWKFBA
NS	0259L00511 HARNESS COND MOTOR	M15	DCG1502103WWXNBA
NS	0259L00512 HARNESS COND MOTOR	M16	DCG1502103WXXXBA
NS	0163M00004 SCREW #10X3/4" BLK (QTY 12)	M17	DCG1502104WJMTBA
Image 2:		M18	DCG1502104WMSBBA
12	0130M00075 LOW PRESSURE SWITCH	M19	DCG1502104WVXXBA
22	0130M00075 LOW PRESSURE SWITCH	M20	DCG1502104WWDDBA
32	0130M00074 HIGH PRESSURE SWITCH	M21	DCG1502104WWDZBA
42	0130M00074 HIGH PRESSURE SWITCH	M22	DCG1502104WWSXBA
62	0151M00012 FILTER/DRIER BI-FLOW	M23	DCG1502104WWXPBA
72	0151M00012 FILTER/DRIER BI-FLOW	M24	DCG1502104WXXXBA
242	0121L02128 MOUNTING PLATE-COMPRESSOR (QTY 2)	M25	DCG1502107WHXXBA
302	ZP67KCETFD130 COMP, 67000,460/60/3 (M17, M18, M19, M20, M21, M22, M23, M24)	M26	DCG1502107WVXXBA
302	ZP67KCETF5130 COMP, 67500,200/230/60/3 (M1, M2, M3, M4, M5, M6, M7, M8, M9, M10, M11, M12, M13, M14, M15, M16)	M27	DCG1502107WXXXBA
302	ZP67KCETF130 COMP, 67500,575/60/3 (M25, M26, M27)		
312	0159L00066 Harness, comp scroll (M17, M18, M19, M20, M21, M22, M23, M24, M25, M26, M27)		
312	0159L00068 Harness, comp scroll (M1, M2, M3, M4, M5, M6, M7, M8, M9, M10, M11, M12, M13, M14, M15, M16)		
312	0159L00069 Harness, comp scroll (M1, M2, M3, M4, M5, M6, M7, M8, M9, M10, M11, M12, M13, M14, M15, M16)		
312	0159L00070 Harness, compm pressor 460V (M17, M18, M19, M20, M21, M22, M23, M24, M25, M26, M27)		
322	M0221641 TF SHOULDER SCREW (QTY 8)		
332	B1339533 COMPRESSOR GROMMET (QTY 8)		
NS	B1373315 ACCESS FITTING (QTY 6)		
NS	0163M00175 CAP WITH O-RING (QTY 6)		

Evaporator, Condenser & Partition Assy

EVAPORATOR ASSEMBLY



CONDENSER ASSEMBLY



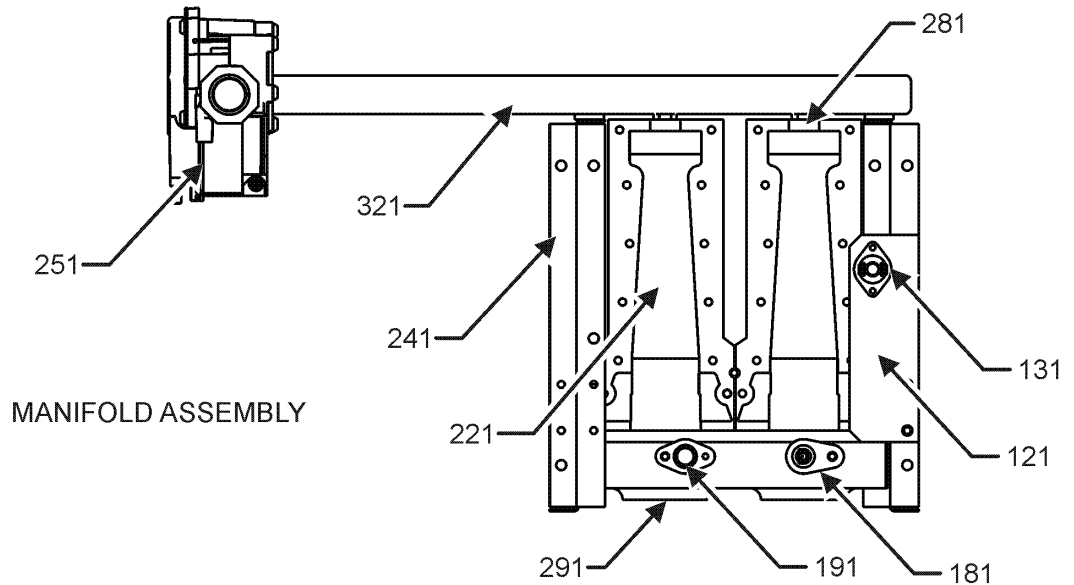
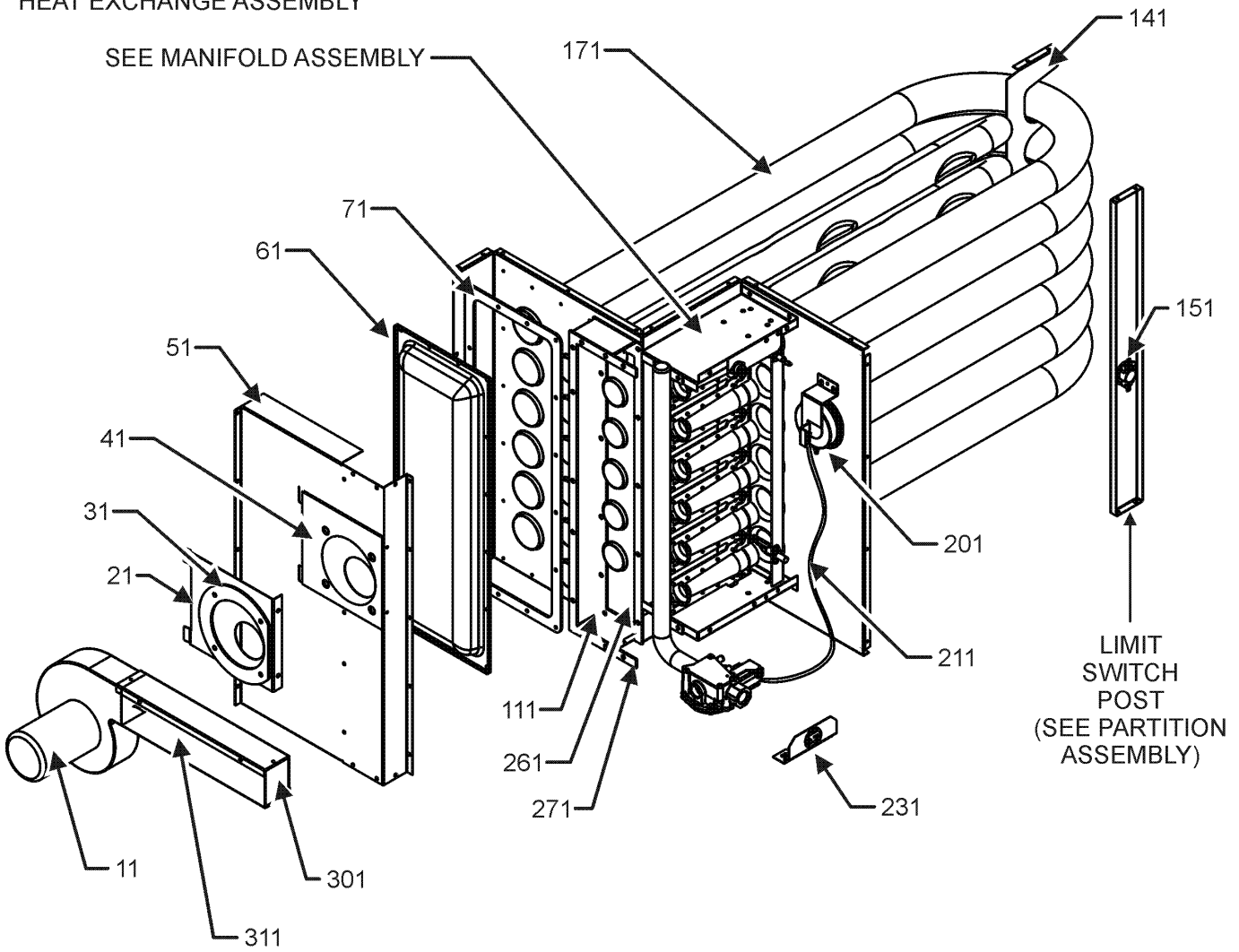
PARTITION ASSEMBLY

Evaporator, Condenser & Partition Assy

Ref. Part No: No:	Description:	Ref. Part No: No:	Description:
Image 1:		Expanded Model Nomenclature	
11	0202L00240	EVAP COIL ASSY, C1	M1 - DCG1502103WAXXBA
21	0202L00239	EVAP COIL ASSY, C2	M2 - DCG1502103WHDGBA
31	0121L02056	BLOCKOFF, RIGHT VERTICAL	M3 - DCG1502103WHXBBA
41	0121L02054	BLOCKOFF, LEFT VERTICAL	M4 - DCG1502103WHXCBA
51	0121L02055	BLOCKOFF, MIDDLE	M5 - DCG1502103WJSNBA
71	0121L02053	VERT ANGLE, FILTER RACK LS	M6 - DCG1502103WJXDBA
81	0121L02083	VERT ANGLE, FILTER RACK RS	M7 - DCG1502103WRKBBA
91	0201L00390	COND COIL ASSY (QTY 2)	M8 - DCG1502103WRKZBA
101	0201L00390	COND COIL ASSY (QTY 2)	M9 - DCG1502103WRSNBA
111	0121L00522	BLOCKOFF-HEAT EXCHANGER	M10 - DCG1502103WRXABA
121	0121L03117	DECK, BLOWER	M11 - DCG1502103WVXBBA
131	0121L00374	DECK SIDE CHANNEL	M12 - DCG1502103WVDCBA
141	0161L00002	DRAIN PAN	M13 - DCG1502103WWDCBA
151	0121L00366	BASE-HEAT EXCHANGER	M14 - DCG1502103WWKFBA
231	0121L02997	SUPPORT, PAN, DRAIN	M15 - DCG1502103WWXNBA
301	0121L03099	POST-LIMIT SWITCH	M16 - DCG1502103WXXXBA
311	0121L00136	BAFFLE-BLOWER	M17 - DCG1502104WJMTBA
321	0163L00071	DRAIN PAN PLUG	M18 - DCG1502104WMSBBA
331	0154L00009	GASKET-DRAIN PAN	M19 - DCG1502104WVXXBA
361	0121L00168	BLOWER TRANSITION, RH END	M20 - DCG1502104WWDDBA
371	0121L00169	BLOWER TRANSITION, LH END	M21 - DCG1502104WWDZBA
381	0121L00092	BLOWER TRANSITION, FRONT	M22 - DCG1502104WWSXBA
391	0121L00094	BLOWER TRANSITION, BACK	M23 - DCG1502104WWXPBA
421	0121L01099RF	RAIL-BASE SIDES RF (QTY 2)	M24 - DCG1502104WXXXBA
431	0121L02130	MOUNTING BRACKET, COND	M25 - DCG1502107WHXXBA
481	0121L00143	ANGLE-HT BASE BRACE	M26 - DCG1502107WVXXBA
561	0121L01079	BLOCKOFF, CONTROL BOX	M27 - DCG1502107WXXXBA
NS	0160L00173	AIR FILTER 14 X 20 X 2 (QTY 2)	
NS	0160L00136	Air Filter 20x20x2 (QTY 4)	
NS	0121L01398	DECK, SUPPORT BLOWER (M2, M7, M8, M12, M13, M14, M17, M20, M21)	
NS	0121L01402	DECK, SUPPORT CONTROL (M2, M7, M8, M12, M13, M14, M17, M20, M21)	
NS	0121L00321	SMOKE DETECTOR COVER (QTY 2)	

Heat Exchange Assembly

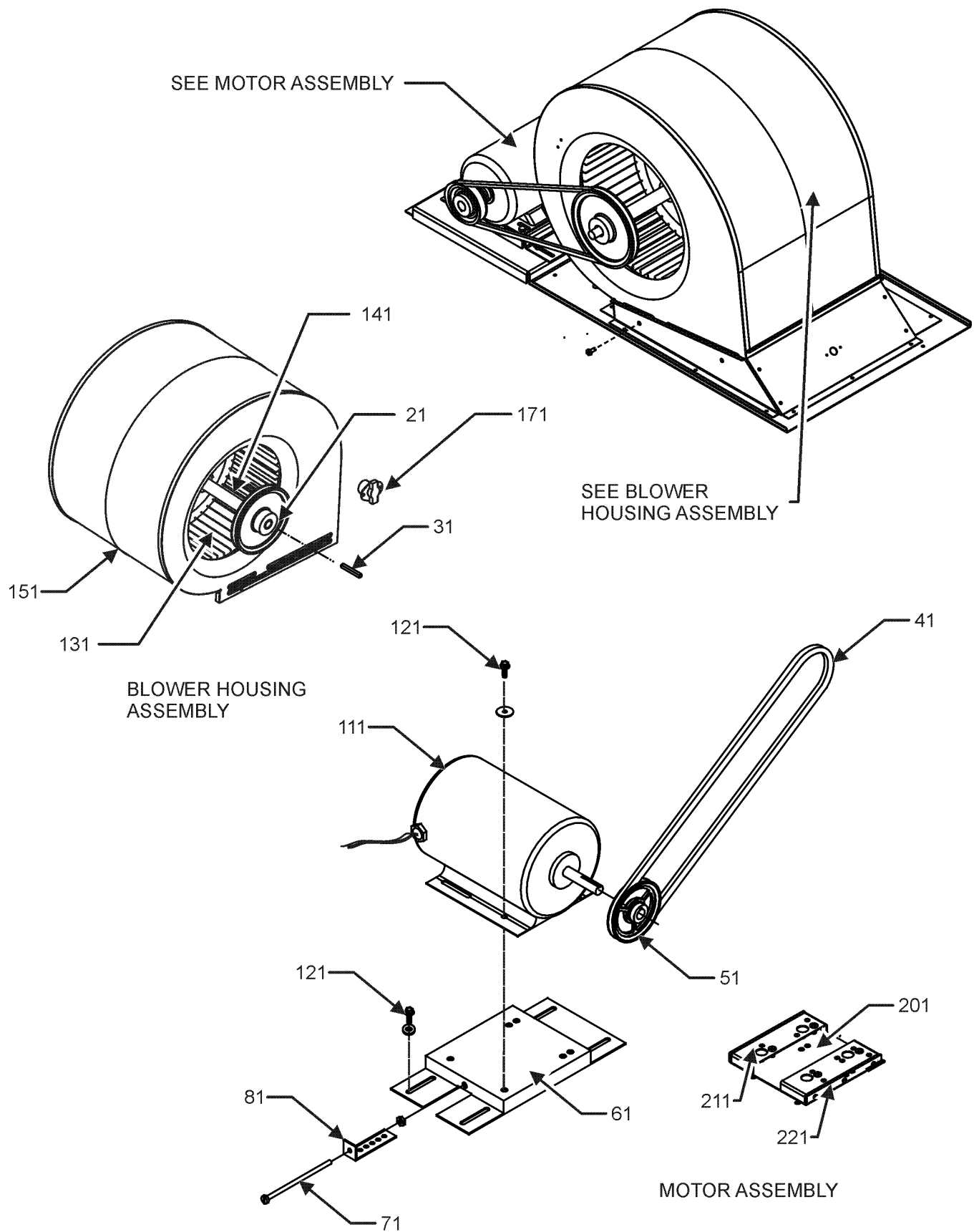
HEAT EXCHANGE ASSEMBLY



Heat Exchange Assembly

Ref. Part No: No:	Description:	Ref. Part No: No:	Description:
Image 1:		Expanded Model Nomenclature	
11	0131L00002 VENT MOTOR	M1	DCG1502103WAXXBA
21	0121L00080 MOUNTING PLATE-ID BLOWER	M2	DCG1502103WHDGBA
31	0154L00007 GASKET, BLOWER/ORIFICE PLATE	M3	DCG1502103WHXBBA
41	0154L00006 GASKET, COLLECTOR/ORIFICE PLATE	M4	DCG1502103WHXCBA
51	0121L00077 COLLECTOR BOX COVER	M5	DCG1502103WJSNBA
61	0121L00072 REAR COVER, HEAT EXCHANGER	M6	DCG1502103WJXDBA
71	0154L00010 REAR COVER GASKET, HEAT EXCHANGER	M7	DCG1502103WRKBBA
111	0121L00076 COLLECTOR BOX CHANNEL	M8	DCG1502103WRKZBA
121	0121L00323 FLAME ROLLOUT BRACKET	M9	DCG1502103WRSNBA
131	10123532 MANUAL RESET LIMIT 350°F	M10	DCG1502103WRXABA
141	0121L01436 SUPPORT BRACKET	M11	DCG1502103WVXBBA
151	B1370187 PRIMARY LIMIT SWITCH 160°F	M12	DCG1502103WVDCBA
171	0270L00171 HEAT EXCHANGER ASSY 6B (M5, M7, M8, M9, M14, M18, M22)	M13	DCG1502103WWDCBA
171	0270L00752 HEAT EXCHANGER ASSY 6B (M1, M2, M3, M4, M6, M10, M11, M12, M13, M15, M16, M17, M19, M20, M21, M23, M24, M25, M26, M27)	M14	DCG1502103WWKFBA
181	0130F00010 FLAME SENSOR	M15	DCG1502103WWXNBA
191	20261709 IGNITOR	M16	DCG1502103WXXXBA
201	11112501 PRESSURE SWITCH	M17	DCG1502104WJMTBA
211	A3468601 PRESSURE SWITCH HOSE	M18	DCG1502104WMSBBA
221	0163L00000 BECKETT BURNER (QTY 6)	M19	DCG1502104WVXXBA
231	0121L00147 PIPE BRACKET-GAS VALVE	M20	DCG1502104WWDDBA
241	0121G00268 BRACKET-BURNER TOP/BOT (QTY 2)	M21	DCG1502104WWDZBA
251	0151L00000 GAS VALVE (36H)	M22	DCG1502104WWSXBA
261	0154L00011 INNER GASKET, COLLECTOR BOX	M23	DCG1502104WWXPBA
271	0154L00012 OUTER GASKET, COLLECTOR BOX	M24	DCG1502104WXXXBA
281	0163L00007 ORIFICE #34 DRILL (QTY 6)	M25	DCG1502107WHXXBA
291	0121L00075 BRACKET-6 BURNERS	M26	DCG1502107WVXXBA
301	0163L00006 FLUE SCREEN	M27	DCG1502107WXXXBA
311	0121L00049 HEAT EXCHANGER FLUE (QTY 2)		
321	0163L00010 MANIFOLD - 6 BRNR		
NS	0121L00130NG FLUE COLLAR		
NS	B1392609 SEAL STRIP, RED, 1/8 X 1/2 X 100 (QTY 3)		

Belt Drive Blower and Motor Assembly



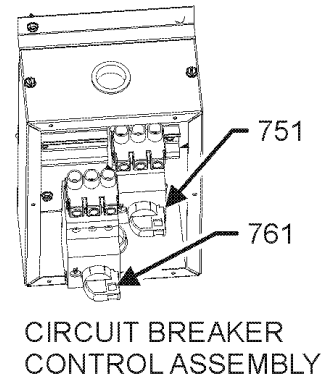
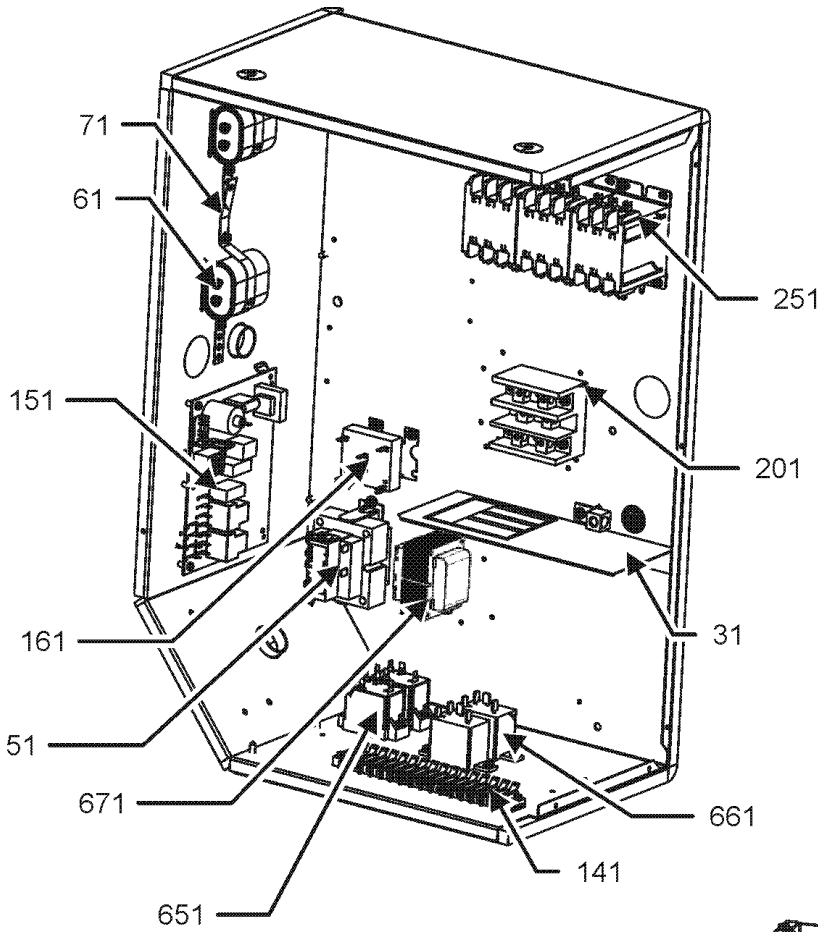
Belt Drive Blower and Motor Assembly

Ref. Part No:	Ref. Part No:	Description:	Description:
Image 1:			
21	0163L00184	SHEAVE, FIXED AK89H	
31	0163M00407	MACHINE KEY, SPECIAL	
41	0164L00002	FAN BELT, NOTCHED	
51	0163L00052	VP SHEAVE	
61	0121L03460	BASE, MOTOR	
71	0163M00045	BOLT 1/4-20 X 4"	
81	3225000F	BELT TIGHTENER ANGLE	
111	0131L00073	MOTOR, 3 PH, 5HP (M1, M2, M3, M4, M5, M6, M7, M8, M9, M10, M11, M12, M13, M14, M15, M16)	
111	0131L00074	MOTOR, 3 PH, 5HP (M17, M18, M19, M20, M21, M22, M23, M24)	
111	0131L00075	Motor, 3ph, 5hp (M25, M26, M27)	
121	B1393738	BOLT 1/4-20 X 3/4" (QTY 4)	
131	03-78497	BLOWER WHEEL	
141	04-11526	BLOWER SHAFT	
151	04-01526	BLOWER HOUSING	
171	0130F00036	PRIMARY LIMIT - PINK	
201	0121L02331	PLATE- MOTOR MOUNTING	
211	0121L02330	ANGLE-MOTOR MOUNT, FRONT	
221	0121L01461	ANGLE-MOTOR MOUNT, BACK	
NS	04-02196	BLOWER BEARING & FRAME ASSY	

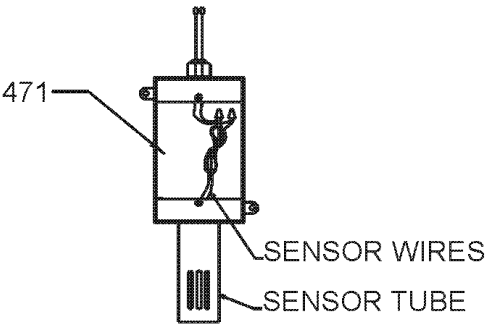
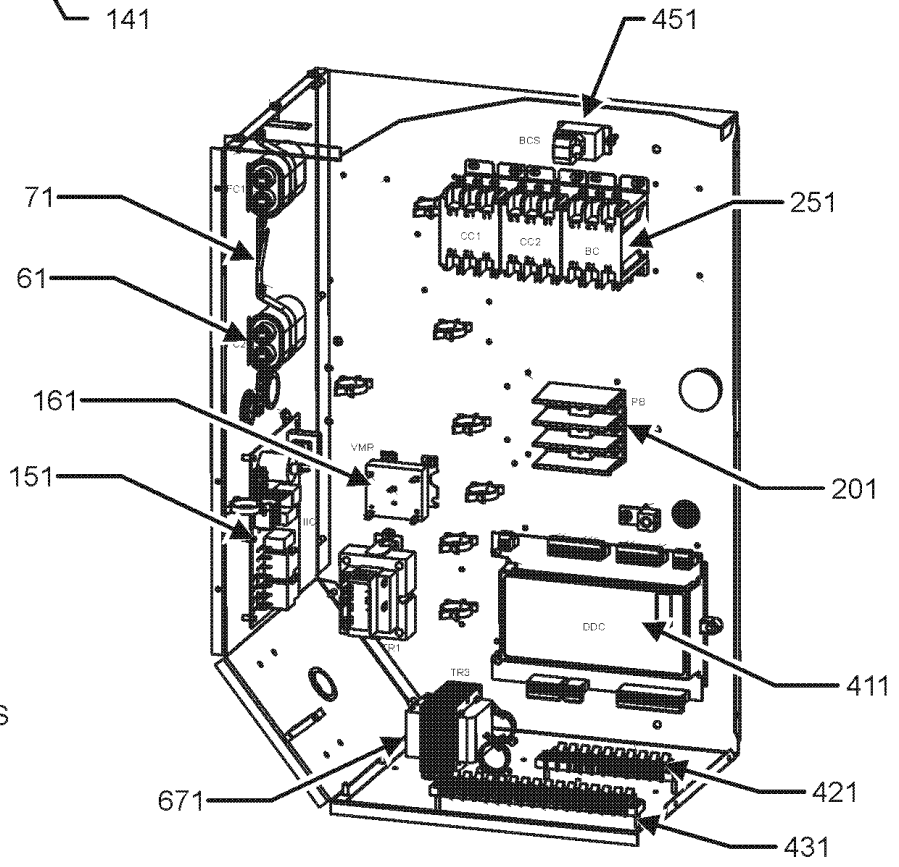
Expanded Model Nomenclature

M1 - DCG1502103WAXXBA
 M2 - DCG1502103WHDGBA
 M3 - DCG1502103WHXBBA
 M4 - DCG1502103WHXCBA
 M5 - DCG1502103WJSNBA
 M6 - DCG1502103WJXDBA
 M7 - DCG1502103WRKBBA
 M8 - DCG1502103WRKZBA
 M9 - DCG1502103WRSNBA
 M10 - DCG1502103WRXABA
 M11 - DCG1502103WVBXBA
 M12 - DCG1502103WVDCBA
 M13 - DCG1502103WWDCBA
 M14 - DCG1502103WWKFBA
 M15 - DCG1502103WWXNBA
 M16 - DCG1502103WXXXBA
 M17 - DCG1502104WJMTBA
 M18 - DCG1502104WMSBBA
 M19 - DCG1502104WVXXBA
 M20 - DCG1502104WWDOBA
 M21 - DCG1502104WWDZBA
 M22 - DCG1502104WWSXBA
 M23 - DCG1502104WWXPBA
 M24 - DCG1502104WXXXBA
 M25 - DCG1502107WHXXBA
 M26 - DCG1502107WVXXBA
 M27 - DCG1502107WXXXBA

Control Box Assembly



CONTROL BOX FOR MODELS WITH DDC CONTROL



FRONT VIEW

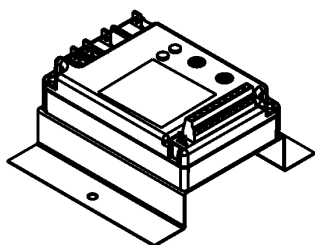
Control Box Assembly

Ref. Part No:	No:	Description:	Ref. Part No:	No:	Description:
Image 1:			Expanded Model Nomenclature		
31	0121G00491	VOLTAGE BARRIER	M1	-	DCG1502103WAXXBA
51	0130M00597	TRANS, 150VA, 575V TO 230V (M25, M26, M27)	M2	-	DCG1502103WHDGBA
51	0130M00594	TRANSFORMER (M1, M2, M3, M4, M5, M6, M7, M8, M9, M10, M11, M12, M13, M14, M15, M16)	M3	-	DCG1502103WHXBBA
51	0130M00595	TRANSFORMER, 75VA, 480V TO 24V (M17, M18, M19, M20, M21, M22, M23, M24)	M4	-	DCG1502103WHXCBA
61	CAP050000440LA	CAPACITOR (M25, M26, M27)	M5	-	DCG1502103WJSNBA
61	CAP100000370LA	CAPACITOR 10/370V (M1, M2, M3, M4, M5, M6, M7, M8, M9, M10, M11, M12, M13, M14, M15, M16, M17, M18, M19, M20, M21, M22, M23, M24)	M6	-	DCG1502103WJXDBA
71	20520901	CAPACITOR STRAP (QTY 8)	M7	-	DCG1502103WRKBBA
141	0130M00038	TERMINAL BOARD	M8	-	DCG1502103WRKZBA
151	PCBAG123	IGNITION BOARD, DSI INTEGRATED	M9	-	DCG1502103WRSNBA
161	0130M00025	RELAY, SPDT	M10	-	DCG1502103WRXABA
201	16220-3	BLOCK, POWER	M11	-	DCG1502103WVXBBA
251	CONT3P030024V	CONTACTOR 30 AMP, 3P, 24V (QTY 4)	M12	-	DCG1502103WVDCBA
411	PCBCG103	PCB, CONTROL, HP, GAS, AC (M7, M8, M9, M10, M18)	M13	-	DCG1502103WWDCBA
421	0130M00274	TERMINAL BOARD (M7, M8, M9, M10, M18)	M14	-	DCG1502103WWKFBA
431	0130M00275	TERMINAL BOARD (M7, M8, M9, M10, M18)	M15	-	DCG1502103WWXNBA
451	0259L00368	CURRENT SWITCH WITH TERMS (M7, M8, M9, M10, M18)	M16	-	DCG1502103WXXXBA
471	0130L00108	OD Air Temp Sensor (M7, M8, M9, M10, M18)	M17	-	DCG1502104WJMTBA
651	10135604	RELAY (QTY 2)	M18	-	DCG1502104WMSBBA
661	0130M00242	RELAY, 24V (QTY 2)	M19	-	DCG1502104WVXXBA
671	0130M00596	TRANS, 150VA, 480V TO 230V (M17, M18, M19, M20, M21, M22, M23, M24)	M20	-	DCG1502104WWDOBA
671	0130M00598	TRANSFORMER, 75VA, 575V TO 24V (M25, M26, M27)	M21	-	DCG1502104WWDZBA
751	0130L00082	ROTARY MANUAL MOTOR PROTECTOR (M25, M26, M27)	M22	-	DCG1502104WWSXBA
761	0130L00082	ROTARY MANUAL MOTOR PROTECTOR (M25, M26, M27)	M23	-	DCG1502104WWXPBA
NS	0130L00112	Duct Temp Sensor (M7, M8, M9, M10, M18)	M24	-	DCG1502104WXXXBA
NS	0259L00401	HARN, BINARY INPUT, DDC (M7, M8, M9, M10, M18)	M25	-	DCG1502107WHXXBA
NS	0259L00382	HARN, CNTL PWR, DDC (M7, M8, M9, M10, M18)	M26	-	DCG1502107WVXXBA
NS	0259L00420	HARN, IIC, DDC 2 SP (M7, M8, M9, M10, M18)	M27	-	DCG1502107WXXXBA
NS	0259L00399	HARN, PWR XFMR CNTL (M7, M8, M9, M10, M18)			
NS	0259L00589	HARN, RELAY OUTPUT, DDC 12.5 G (M7, M8, M9, M10, M18)			
NS	0259L00511	HARNESS COND MOTOR			
NS	0259L00512	HARNESS COND MOTOR			
NS	0259L00496	HARNESS, NON POW, CONV, OUT (M2, M10, M15, M17, M20, M21, M23)			
NS	0259L00092	HARNESS-SMOKE DETECTOR SENSOR (M2, M5, M6, M8, M9, M15, M17, M20, M21, M23)			
NS	0130L00107	ROOM SENSOR (M7, M8, M9, M10, M18)			
NS	0259L00588	WIRE HARNESS DDC, 12.5 C/G (M7, M8, M9, M10, M18)			
NS	0259L00510	WIRE HARNESS, ECONOMIZER			
NS	0259L00090	WIRE HARNESS-SMOKE DETECTOR (M2, M5, M6, M15, M17, M20, M21, M23)			

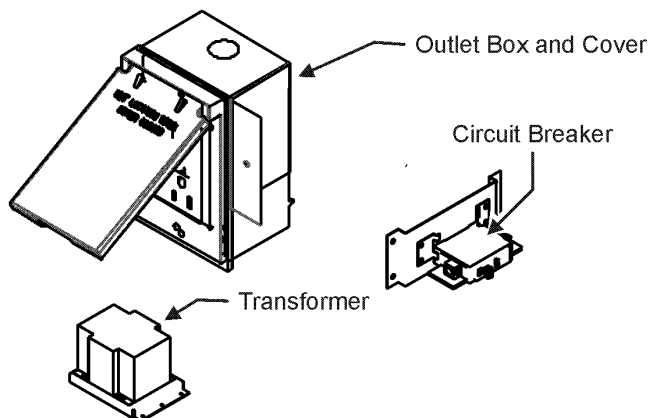
ACCESSORY PARTS LIST

NOTE: NOT ALL OPTIONS AVAILABLE FOR ALL PRODUCTS

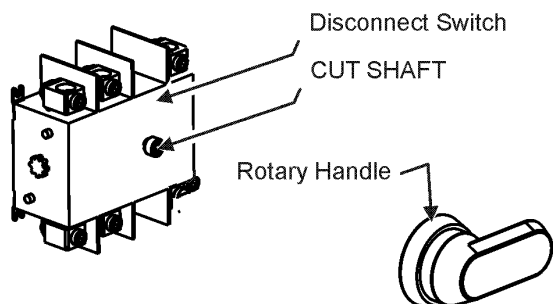
1 LOW AMBIENT KITS



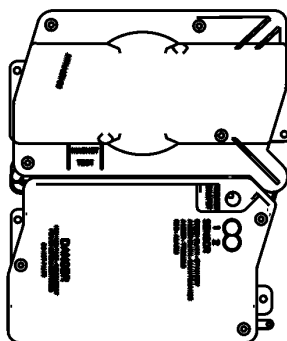
2 GFCI CONVENIENCE OUTLET



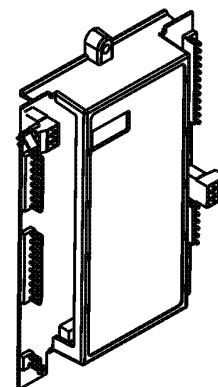
3 DISCONNECT MODULE (NON-FUSED)



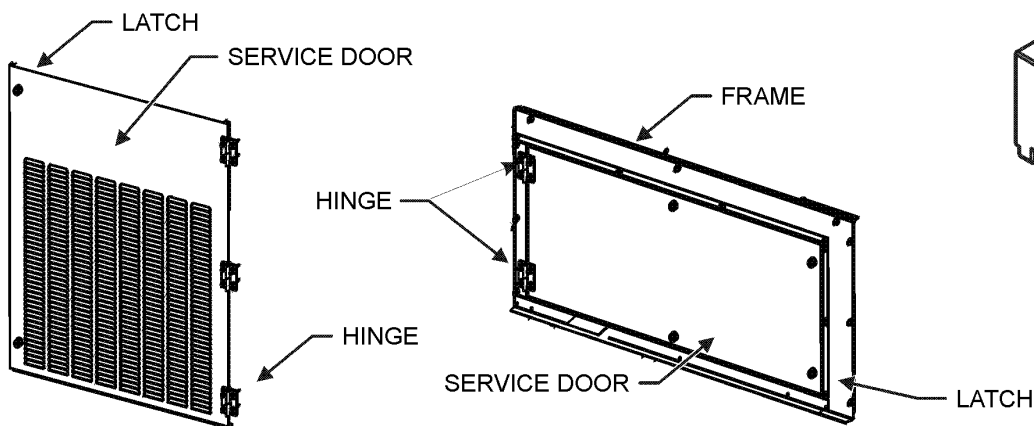
4 SMOKE DETECTORS



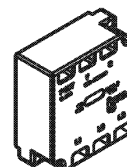
5 DDC CONTROL



6 HINGED DOOR ASSEMBLIES



7 PHASE MONITOR



Accessory Parts

Ref. Part No:	Ref. Part No:	Description:	Description:
Image 1:		Image 1:	
NS DDNECNJ90150B	NS 0130L00049	7.5-12.5 TON DFLOW ECON (M11, M12, M13, M14, M15, M19, M20, M21, M22, M23, M26)	SHAFT, DISCONNECT (M2, M3, M4, M5, M6, M7, M8, M9, M10, M13, M14, M15, M17, M18, M20, M21, M22, M23, M25)
NS 1036610B	NS D4120	7.5-12.5 TON DFLOW ECONOMIZER (M1, M5, M6, M17)	SMOKE DETECTOR, PHOTO 4WIRE (M2, M5, M6, M8, M9, M15, M17, M20, M21, M23)
NS 10366D10B	NS D4S	7.5-12.5T DFLOW ECON, DDC (M7, M8, M9, M10)	SMOKE DETECTOR, SENSOR ONLY (M8, M17, M20, M21)
NS 0121L00316	NS 0130L00027	BRACKET-CONV OUTLET MOUNT (M2, M3, M5, M7, M9, M10, M14, M15, M17, M18, M20, M23)	SWITCH-DISCONNECT 100A (M2, M3, M4, M5, M6, M7, M8, M9, M10, M13, M14, M15)
NS 0121L00768	NS 0130L00046	BRACKET-SMOKE DETECTOR (M2, M5, M6, M8, M9, M15, M17, M20, M21, M23)	SWITCH-DISCONNECT 60A (M17, M18, M20, M21, M22, M23, M25)
NS 0130M00065	NS 0130M00061	CIRCUIT BREAKER, CONVENIENCE OUTLET (M3, M5, M7, M9, M15, M17, M18, M20, M23)	TRANSFORMER, CONVENIENCE OUTLET (M3, M5, M7, M9, M15, M17, M18, M20, M23)
NS 0121L00973NG	Expanded Model Nomenclature M1 - DCG1502103WAXXBA M2 - DCG1502103WHDGBA M3 - DCG1502103WHXBBA M4 - DCG1502103WHXCBA M5 - DCG1502103WJSNBA M6 - DCG1502103WJXDBA M7 - DCG1502103WRKBBA M8 - DCG1502103WRKZBA M9 - DCG1502103WRSNBA M10 - DCG1502103WRXABA M11 - DCG1502103WVBXBA M12 - DCG1502103WVDCBA M13 - DCG1502103WWDCBA M14 - DCG1502103WWKFBA M15 - DCG1502103WWXNBA M16 - DCG1502103WXXXBA M17 - DCG1502104WJMTBA M18 - DCG1502104WMSBBA M19 - DCG1502104WVXXBA M20 - DCG1502104WWDDBA M21 - DCG1502104WWDZBA M22 - DCG1502104WWSXBA M23 - DCG1502104WXXPBA M24 - DCG1502104WXXXBA M25 - DCG1502107WHXXBA M26 - DCG1502107WVXXBA M27 - DCG1502107WXXXBA		
NS 0121L01414NG			DOOR FRAME, BLOWER (M2, M7, M8, M12, M13, M14, M17, M20, M21)
NS 0121L01417NG			DOOR FRAME, CONTROL (M2, M7, M8, M12, M13, M14, M17, M20, M21)
NS 0130L00012			GANG BOX-GFCI OUTLET (M2, M3, M5, M7, M9, M10, M14, M15, M17, M18, M20, M23)
NS 0130L00039			HANDLE, ROTARY (M2, M3, M4, M5, M6, M7, M8, M9, M10, M13, M14, M15, M17, M18, M20, M21, M22, M23, M25)
NS 0163M00307			HINGE, LEFT HAND (M2, M7, M8, M12, M13, M14, M17, M20, M21)
NS 0163M00308			HINGE, RIGHT HAND (M2, M7, M8, M12, M13, M14, M17, M20, M21)
NS 0163M00322			LATCH (M2, M7, M8, M12, M13, M14, M17, M20, M21)
NS 0130M00059			LOW AMBIENT KIT (M4, M12, M13, M14, M17)
NS 0121L02221NG			PNT, DOOR FRAME, FILTER (M2, M7, M8, M12, M13, M14, M17, M20, M21)
NS 0121L02222NG			PNT, SERVICE DOOR BACK FILTER (M2, M7, M8, M12, M13, M14, M17, M20, M21)
NS 0121L02219NG			PNT, SERVICE DOOR FRONT FILTER (M2, M7, M8, M12, M13, M14, M17, M20, M21)
NS 0121L02482NG			PNT, SERVICE DOOR FRONT, BLWR (M2, M7, M8, M12, M13, M14, M17, M20, M21)
NS 0161G00012			POWER OUTLET BOX (M2, M3, M5, M7, M9, M10, M14, M15, M17, M18, M20, M23)
NS 0130L00103			RECEPTACLE-GFCI OUTLET (M2, M3, M5, M7, M9, M10, M14, M15, M17, M18, M20, M23)
NS 0121L02483NG			SERVICE DOOR BACK, BLOWER (M2, M7, M8, M12, M13, M14, M17, M20, M21)
NS 0121L01416NG			SERVICE DOOR BACK, CONTROL (M2, M7, M8, M12, M13, M14, M17, M20, M21)
NS 0121L01415NG			SERVICE DOOR FRONT, CONTROL (M2, M7, M8, M12, M13, M14, M17, M20, M21)
NS 0130L00056			SHAFT, CUT (M2, M3, M4, M5, M6, M7, M8, M9, M10, M13, M14, M15)
NS 0130L00057			SHAFT, CUT (M17, M18, M20, M21, M22, M23, M25)