

Commercial 12.5 Ton 2-Speed Package Gas Unit

DCG1502103V1DDBA
DCG1502103VBXXBA
DCG1502103VHDABA
DCG1502103VHDBBA
DCG1502103VHDDBA
DCG1502103VHMCBA
DCG1502103VRXXBA
DCG1502103VVDTBA
DCG1502103VVXDBA
DCG1502103VWDVBA
DCG1502103VWDXBA
DCG1502103VWXBBA
DCG1502103VWXNBA
DCG1502103VXDXBA
DCG1502103VXXBA
DCG1502103VXXABA
DCG1502103VXXXBA
DCG1502104VAXVBA
DCG1502104VHXABA
DCG1502104VHXXBA
DCG1502104VVXCBA
DCG1502104VWXCBA
DCG1502104VWXNBA
DCG1502104VXDXBA
DCG1502104VXSDBA
DCG1502104VXXABA
DCG1502104VXXBBA
DCG1502104VXXXBA
DCG1502107VXSXBA
DCG1502107VXXXBA



This manual is to be used by qualified technicians only.

This manual replaces RP-D1171F.

Important Information

Index

Functional Parts List	3
Illustration and Parts	4 - 17

Views shown are for parts illustrations only, not servicing procedures

Text Codes:

AR - As Required

NA - Not Available

NS - Not Shown

00000000 - See Note

QTY - Quantity Example (QTY 3) (If Quantity not shown, Quantity = 1)

M - Model Example (M1) (If M Code not shown, then part is used on all Models)

Expanded Model Nomenclature:

Example M1 - Model#1 M2 - Model#2 M3 - Model#3

Daikin Company, L.P. is not responsible for personal injury or property damage resulting from improper service. Review all service information before beginning repairs.

Warranty service must be performed by an authorized technician, using authorized factory parts. If service is required after the warranty expires, Daikin Company, L.P. also recommends contacting an authorized technician and using authorized factory parts.

Daikin Company, L.P. reserves the right to discontinue, or change at any time, specifications or designs without notice or without incurring obligations.

For assistance within the U.S.A. contact:

Equipment Support
Daikin North America, LLC
19001 Kermier Road
Waller, Texas 77484
855-770-5678-Telephone
713-863-2382-Facsimile

For assistance outside the U.S.A. contact:

International Division
Daikin North America, LLC
19001 Kermier Road
Waller, Texas 77484
713-861-2500-Telephone
713-863-2382-Facsimile

Functional Parts

Part

No: Description:

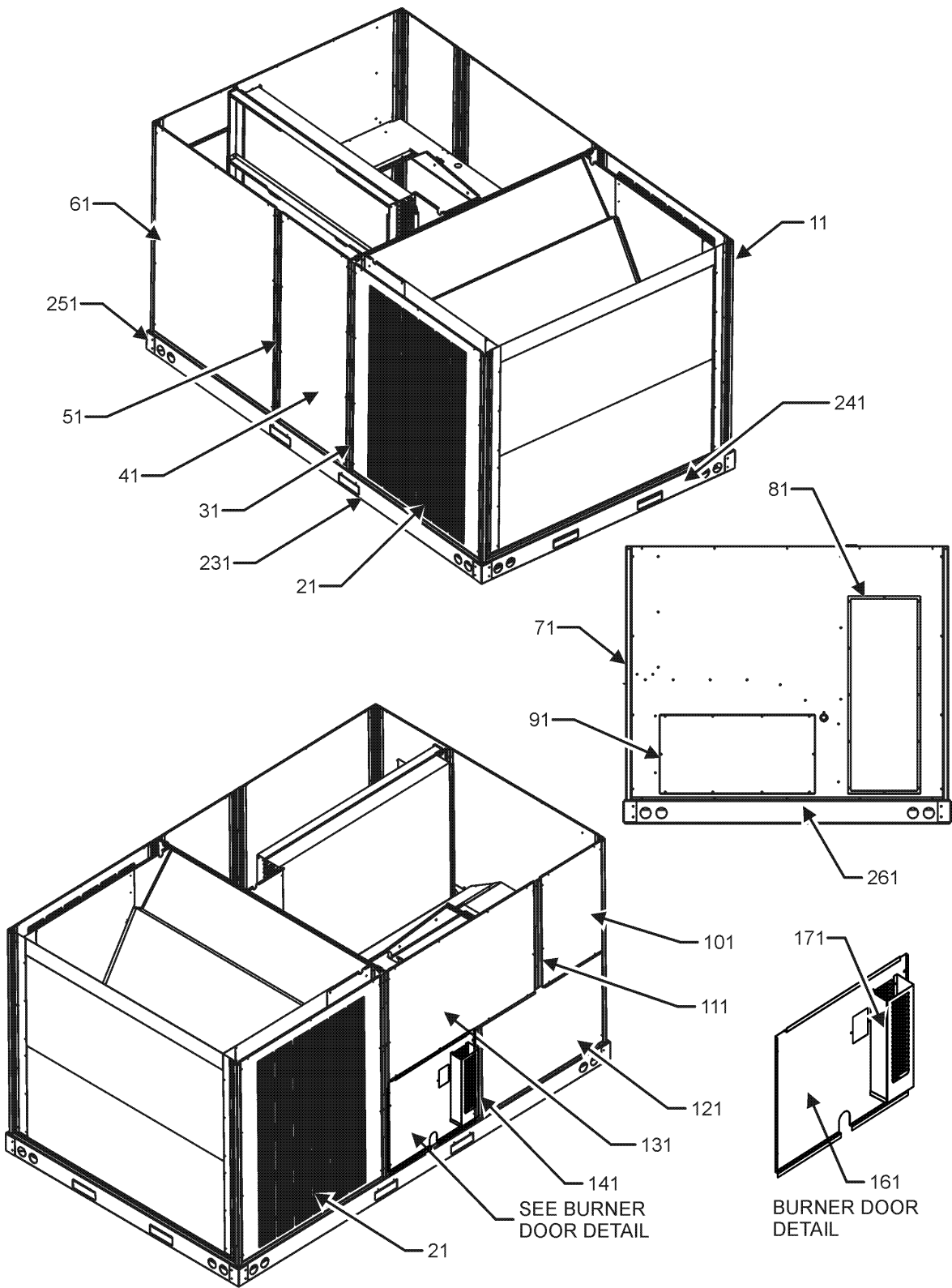
0150L00003	BLADE-FAN 22" ALUM. CCW 30 DEG (QTY 2)
16220-3	BLOCK, POWER
CAP100000370LA	CAPACITOR 10/370V (M1, M2, M3, M4, M5, M6, M7, M8, M9, M10, M11, M12, M13, M14, M15, M16, M17, M18, M19, M20, M21, M22, M23, M24, M25, M26, M27, M28)
CAP050000440LA	CAPACITOR 5/440V (M29, M30)
ZP67KCETFD130	COMP, 67000,460/60/3 (M18, M19, M20, M21, M22, M23, M24, M25, M26, M27, M28)
ZP67KCETF5130	COMP, 67500,200/230/60/3 (M1, M2, M3, M4, M5, M6, M7, M8, M9, M10, M11, M12, M13, M14, M15, M16, M17)
ZP67KCETFE130	COMP, 67500,575/60/3 (M29, M30)
CONT3P030024V	CONTACTOR 30 AMP, 3P, 24V (QTY 4)
0259L00368	CURRENT SWITCH WITH TERMS (M1, M6)
0130L00112	Duct Temp Sensor (M1, M6)
0130F00010	FLAME SENSOR
0151L00000	GAS VALVE (36H)
0130M00074	HIGH PRESSURE SWITCH (QTY 2)
PCBAG123	IGNITION BOARD, DSI INTEGRATED
20261709	IGNITOR
0130M00075	LOW PRESSURE SWITCH
10123532	MANUAL RESET LIMIT 350°F
0131M00842	MOTOR, 1/3 HP, OD (M29, M30)
0131M00841	MOTOR, 1/3 HP, OD (M19, M20, M23, M24, M25, M26, M27, M28)
0131M00840	MOTOR, 1/3 HP, OD (M1, M2, M3, M4, M5, M6, M8, M10, M11, M12, M13, M14, M15, M16, M17)
0131L00071	MOTOR, 3 H.P., 3P (M18, M19, M20, M21, M22, M23, M24, M25, M26, M27, M28)
0131L00070	MOTOR, 3 H.P., 3P (M1, M2, M3, M4, M5, M6, M7, M8, M9, M10, M11, M12, M13, M14, M15, M16, M17)
0131L00027	MOTOR, 3 HP BELT DRIVE 575 V (M29, M30)
0164L00001	NOTCHED FAN BELT AX49
0130L00108	OD Air Temp Sensor (M1, M6)
PCBCG103	PCB, CONTROL, HP, GAS ,AC (M1, M6)
11112501	PRESSURE SWITCH
0130F00036	PRIMARY LIMIT - PINK
B1370187	PRIMARY LIMIT SWITCH 160°F
10135604	RELAY (QTY 2)
0130M00242	RELAY, 24V (QTY 2)
0130M00025	RELAY, SPDT
0130M00275	TERMINAL BOARD (M1, M6)
0130M00274	TERMINAL BOARD (M1, M6)
0130M00038	TERMINAL BOARD
0130M00596	TRANS, 150VA, 480V TO 230V (M18, M19, M20, M21, M22, M23, M24, M25, M26, M27, M28)
0130M00597	TRANS, 150VA, 575V TO 230V (M29, M30)
0130M00594	TRANSFORMER (M1, M2, M3, M4, M5, M6, M7, M8, M9, M10, M11, M12, M13, M14, M15, M16, M17)
0130M00595	TRANSFORMER, 75VA, 480V TO 24V (M18, M19, M20, M21, M22, M23, M24, M25, M26, M27, M28)
0130M00598	TRANSFORMER, 75VA, 575V TO 24V (M29, M30)

0131L00002	VENT MOTOR (M1, M2, M3, M4, M5, M6, M7, M8, M9, M10, M11, M12, M13, M14, M15, M16, M17, M18, M19, M20, M21, M22, M23, M24, M25, M26, M27, M28, M30)
------------	---

Expanded Model Nomenclature

M1 - DCG1502103VBXXBA
M2 - DCG1502103VHDABA
M3 - DCG1502103VHDBBA
M4 - DCG1502103VHDDBA
M5 - DCG1502103VHMCBA
M6 - DCG1502103VRXXBA
M7 - DCG1502103VVDTBA
M8 - DCG1502103VVXDBA
M9 - DCG1502103VVDVBA
M10 - DCG1502103VVDXBA
M11 - DCG1502103VWXBBA
M12 - DCG1502103VWXNBA
M13 - DCG1502103VXDDBA
M14 - DCG1502103VXXBBA
M15 - DCG1502103VXXABA
M16 - DCG1502103VXXXBA
M17 - DCG1502103V1DDBA
M18 - DCG1502104VAXVBA
M19 - DCG1502104VHXABA
M20 - DCG1502104VHXXBA
M21 - DCG1502104VVXCBA
M22 - DCG1502104VWXCBA
M23 - DCG1502104VWXNBA
M24 - DCG1502104VXDDBA
M25 - DCG1502104VXSDBA
M26 - DCG1502104VXXABA
M27 - DCG1502104VXXBBA
M28 - DCG1502104VXXXBA
M29 - DCG1502107VXSXBA
M30 - DCG1502107VXXXBA

Cabinet Assembly



Cabinet Assembly

Ref. Part

No: No: Description:

Ref. Part

No: No: Description:

Image 1:

11	0121L00979RFNG	CORNER POST (QTY 4)
11	0121L01421RFNG	CORNER POST, RF PAINTED (M2, M3, M4, M5, M7, M9, M10, M13, M14, M17, M24)
21	0152L00001	GRILLE-CONDENSER (QTY 2)
31	0121L00980RFNG	SIDE POST (M1, M6, M8, M11, M12, M15, M16, M18, M19, M20, M21, M22, M23, M25, M26, M27, M28, M29, M30)
31	0121L01423RFNG	SIDE POST (M2, M3, M4, M5, M7, M9, M10, M13, M14, M17, M24)
41	0121L00759NG	FILTER DOOR
51	0121L00757RFNG	FILTER DOOR POST (M1, M6, M8, M11, M12, M15, M16, M18, M19, M20, M21, M22, M23, M25, M26, M27, M28, M29, M30)
51	0121L01433RFNG	FILTER DOOR POST (M2, M3, M4, M5, M7, M9, M10, M13, M14, M17, M24)
61	0121L00378NG	ECONOMIZER DOOR (M1, M2, M3, M4, M5, M13, M14, M15, M16, M17, M18, M19, M20, M24, M25, M26, M27, M28, M29, M30)
71	0121L01287NG	DUCT PANEL (M1, M7, M8, M13, M14, M16, M18, M21, M24, M25, M27, M28, M29, M30)
71	0121L01367NG	DUCT PANEL (M4, M5, M6, M9, M10, M17, M20, M22)
71	0121L01368NG	DUCT PANEL (M2, M3, M11, M12, M15, M19, M23, M26)
81	0121L00082NG	RETURN DUCT COVER
91	0121L00099NG	SUPPLY DUCT COVER
101	0121L01078NG	CONTROL DOOR
111	0121L02305RFNG	RF, PAINTED CONTROL POST 12.5 (M1, M6, M8, M11, M12, M15, M16, M18, M19, M20, M21, M22, M23, M25, M26, M27, M28, M29, M30)
111	0121L02518RFNG	RF, PNT CNTL POST HINGED 12.5 (M2, M3, M4, M5, M7, M9, M10, M13, M14, M17, M24)
121	0121L00767NG	ELECTRIC HEAT DOOR
131	0121L00819NG	BLOWER DOOR
141	0121L00765RFNG	BURNER BOX POST
161	0121L00766NG	BURNER DOOR
171	0121L00129	DOOR RAIN SHIELD
231	0121L01099RF	RAIL, BASE SIDES (QTY 2)
241	0121L00834RF	RAIL, BASE ENDS
251	0121G00301	BRACKET-RAIL CORNERS (QTY 4)
261	0121L00071RF	RAIL-BASE DUCT END
NS	0121L00727	ECONOMIZER COVER (M7, M8, M9, M10, M11, M12, M21, M22, M23)
NS	0121L01310	ECONOMIZER COVER (M6)
NS	0164L00009	GASKET-RUBBER, CPOST (QTY 3)
NS	0164L00011	GASKET-RUBBER, SIDE POST (QTY 5)

Expanded Model Nomenclature

M1 - DCG1502103VBXXBA
M2 - DCG1502103VHDABA
M3 - DCG1502103VHDBBA
M4 - DCG1502103VHDDBA
M5 - DCG1502103VHMCBA
M6 - DCG1502103VRXXBA
M7 - DCG1502103VVDTBA
M8 - DCG1502103VVXDBA
M9 - DCG1502103VWDVBA
M10 - DCG1502103VWDXBA
M11 - DCG1502103VWXBBA
M12 - DCG1502103VWXNBA
M13 - DCG1502103VXDXBA
M14 - DCG1502103VXKXBA
M15 - DCG1502103VXXABA
M16 - DCG1502103VXXXBA
M17 - DCG1502103V1DDBA
M18 - DCG1502104VAXVBA
M19 - DCG1502104VHXABA
M20 - DCG1502104VHXXBA
M21 - DCG1502104VVXCBA
M22 - DCG1502104VWXCBA
M23 - DCG1502104VWXNBA
M24 - DCG1502104VXDXBA
M25 - DCG1502104VXSDBA
M26 - DCG1502104VXXABA
M27 - DCG1502104VXXBBA
M28 - DCG1502104VXXXBA
M29 - DCG1502107VXSXBA
M30 - DCG1502107VXXXBA

Top Panel and Tubing Assembly

IMAGE 1

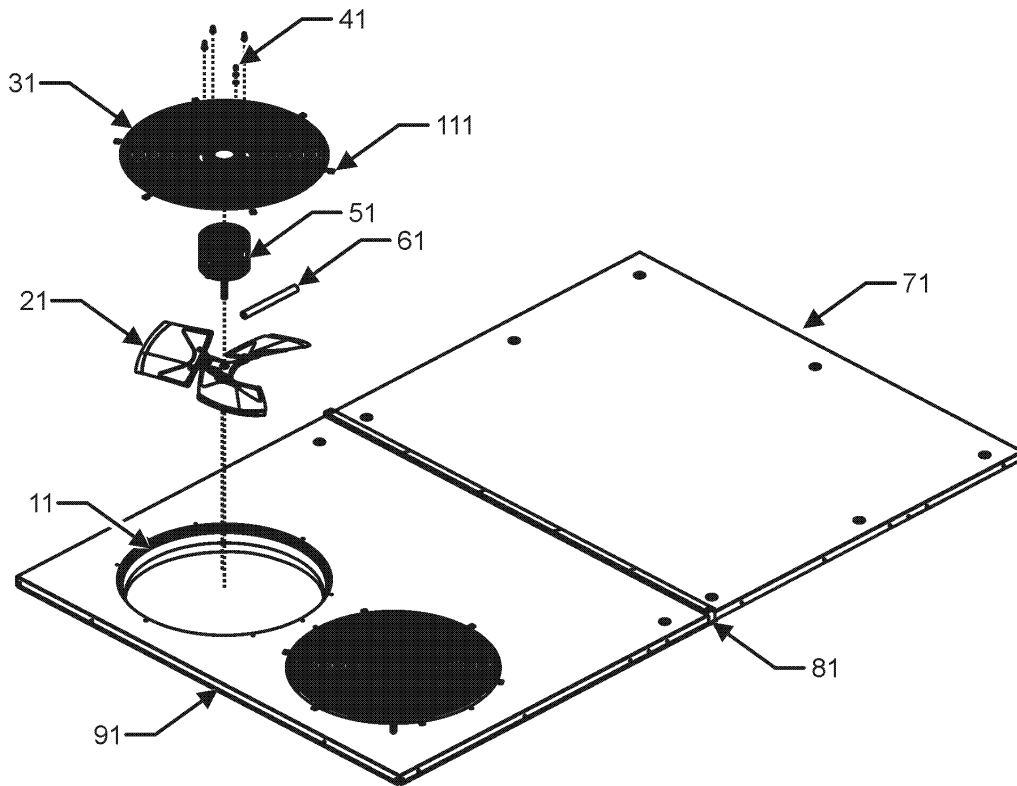
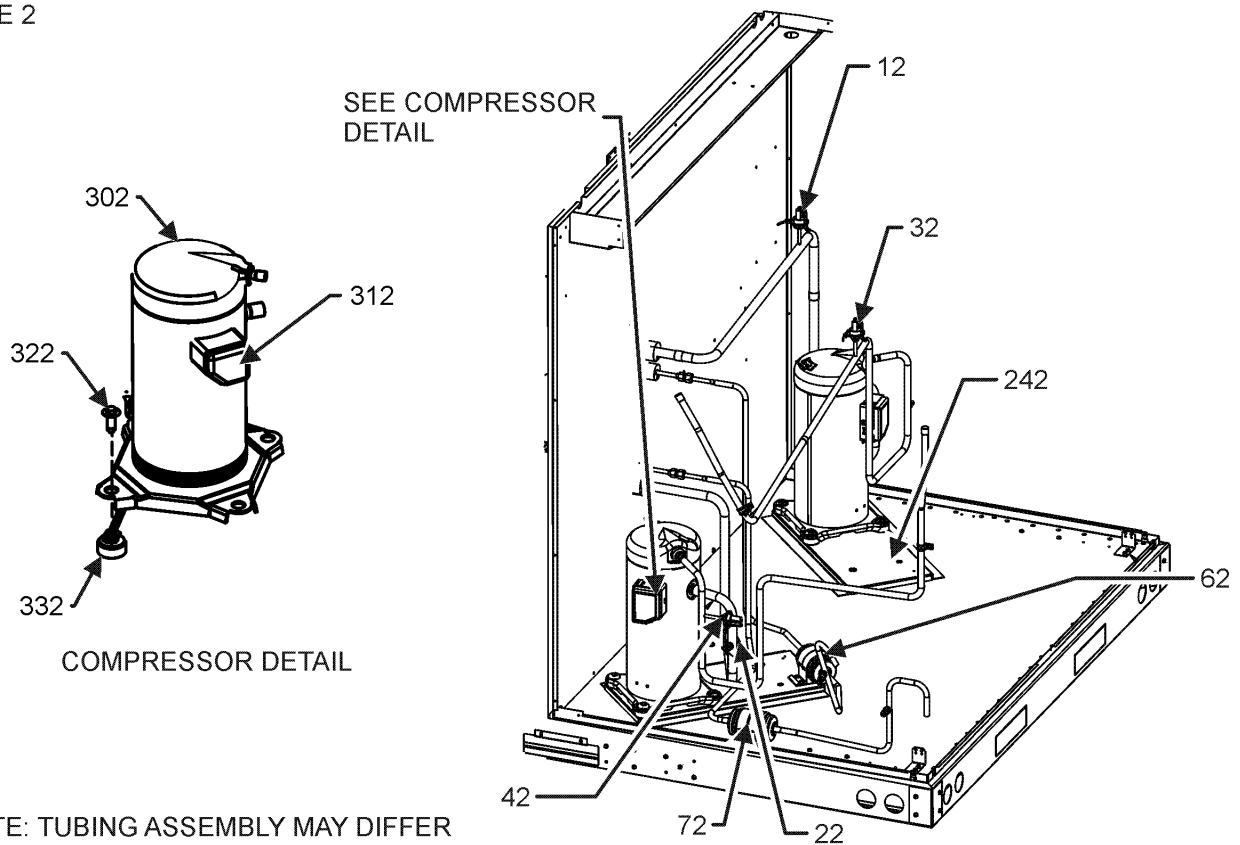


IMAGE 2



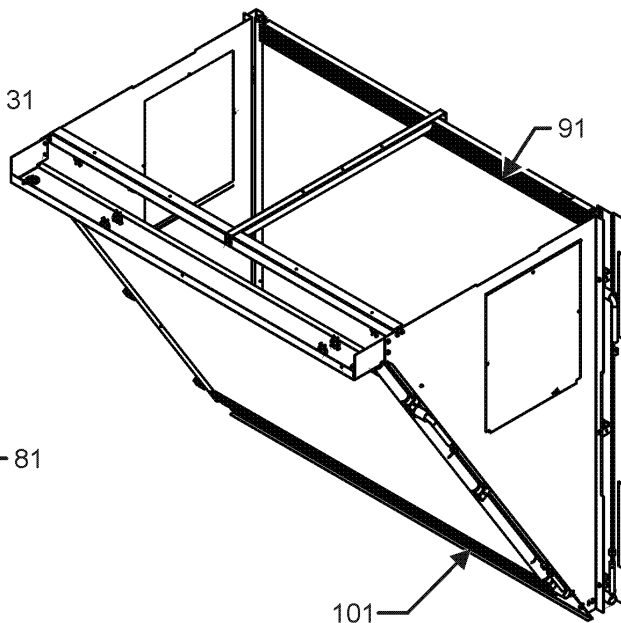
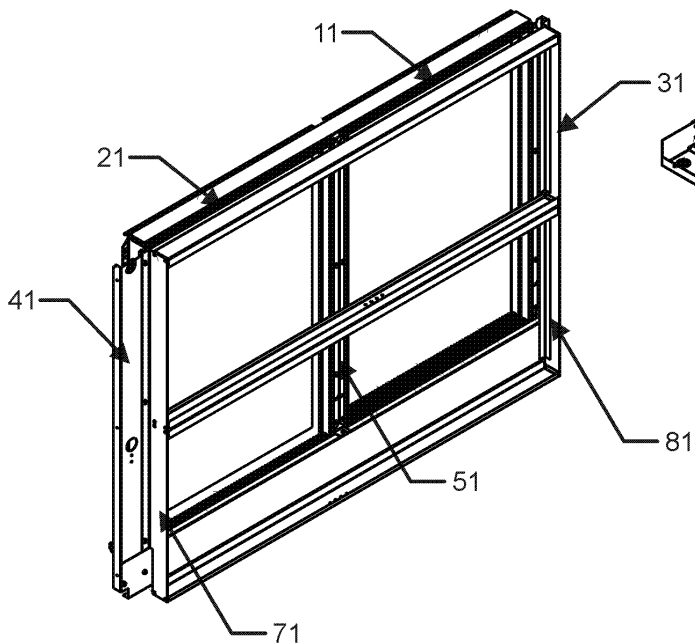
NOTE: TUBING ASSEMBLY MAY DIFFER FROM WHAT IS SHOWN

Top Panel and Tubing Assembly

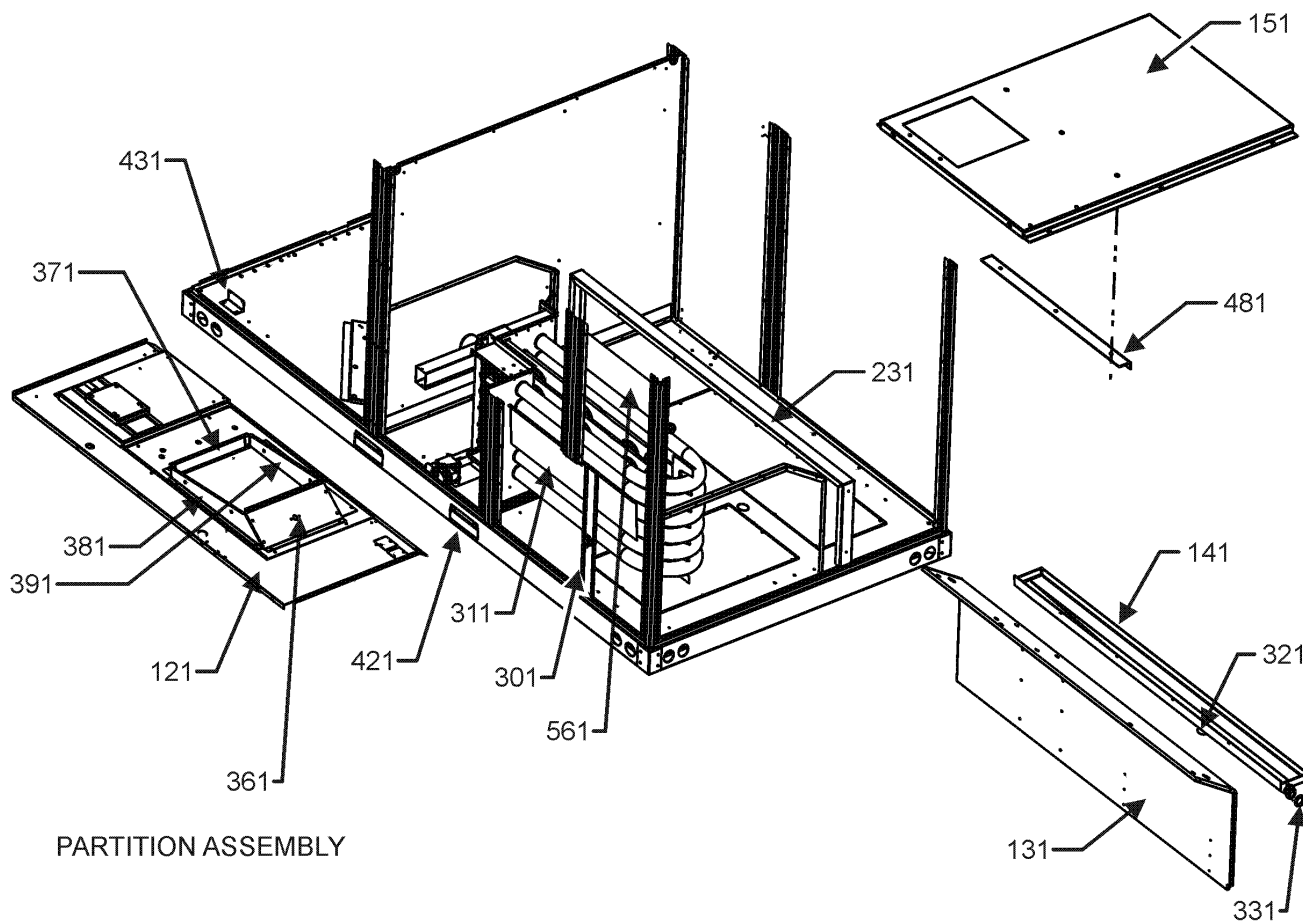
Ref. Part No:	Description:	Ref. Part No:	Description:
Image 1:		Expanded Model Nomenclature	
11	0161L00000 VENTURI RING 22" (QTY 2)	M1	- DCG1502103VBXXBA
21	0150L00003 BLADE-FAN 22" ALUM. CCW 30 DEG (QTY 2)	M2	- DCG1502103VHDABA
31	0152G00000 FAN GRILLE, RAISED (QTY 2)	M3	- DCG1502103VHDBBA
41	0163M00006P ACORN NUT 5/16 HEX BLACK (QTY 8)	M4	- DCG1502103VHDDBA
51	0131M00840 MOTOR, 1/3 HP, OD (M1, M2, M3, M4, M5, M6, M8, M10, M11, M12, M13, M14, M15, M16, M17)	M5	- DCG1502103VHMCBA
51	0131M00841 MOTOR, 1/3 HP, OD (M19, M20, M23, M24, M25, M26, M27, M28)	M6	- DCG1502103VRXXBA
51	0131M00842 MOTOR, 1/3 HP, OD (M29, M30)	M7	- DCG1502103VVDTBA
51	0131L00064 MOTOR, COND, 1/3 HP, 208/230V (M7, M9)	M8	- DCG1502103VVXDBA
51	0131L00065 MOTOR, COND, 1/3 HP, 460V (M18, M21, M22)	M9	- DCG1502103VWDVBA
61	0161R00003P CONDUIT (QTY 2)	M10	- DCG1502103VWDXBA
71	0121L01119NG PAINTED TOP PANEL INDOOR	M11	- DCG1502103VWXBBA
81	20455902 SPLICE GASKET .50 X .25 (QTY 11)	M12	- DCG1502103VWXNBA
91	0121L01118NG PAINTED TOP PANEL OUTDOOR	M13	- DCG1502103VXDXBA
111	0163M00005P WASHER, BLACK (.50 OD .218ID) (QTY 8)	M14	- DCG1502103VXXBA
NS	0259L00511 HARNESS COND MOTOR (M7, M9)	M15	- DCG1502103VXXABA
NS	0259L00512 HARNESS COND MOTOR (M7, M9)	M16	- DCG1502103VXXXBA
NS	0163M00004 SCREW #10X3/4" BLK (QTY 4)	M17	- DCG1502103V1DDBA
Image 2:		M18	- DCG1502104VAXVBA
12	0130M00075 LOW PRESSURE SWITCH	M19	- DCG1502104VHXABA
22	0130M00075 LOW PRESSURE SWITCH	M20	- DCG1502104VHXXBA
32	0130M00074 HIGH PRESSURE SWITCH	M21	- DCG1502104VVXCBA
42	0130M00074 HIGH PRESSURE SWITCH	M22	- DCG1502104VWXCBA
62	0151M00012 FILTER/DRIER BI-FLOW	M23	- DCG1502104VWXNBA
72	0151M00012 FILTER/DRIER BI-FLOW	M24	- DCG1502104VXDXBA
242	0121L02128 MOUNTING PLATE-COMPRESSOR (QTY 2)	M25	- DCG1502104VXSDBA
302	ZP67KCETFD130 COMP, 67000,460/60/3 (M18, M19, M20, M21, M22, M23, M24, M25, M26, M27, M28)	M26	- DCG1502104VXXABA
302	ZP67KCETF5130 COMP, 67500,200/230/60/3 (M1, M2, M3, M4, M5, M6, M7, M8, M9, M10, M11, M12, M13, M14, M15, M16, M17)	M27	- DCG1502104VXXBBA
302	ZP67KCETFE130 COMP, 67500,575/60/3 (M29, M30)	M28	- DCG1502104VXXXBA
312	0159L00066 Harness, comp scroll (M18, M19, M20, M21, M22, M23, M24, M25, M26, M27, M28, M29, M30)	M29	- DCG1502107VXSXBA
312	0159L00068 Harness, comp scroll (M1, M2, M3, M4, M5, M6, M7, M8, M9, M10, M11, M12, M13, M14, M15, M16, M17)	M30	- DCG1502107VXXXBA
312	0159L00069 Harness, comp scroll (M1, M2, M3, M4, M5, M6, M7, M8, M9, M10, M11, M12, M13, M14, M15, M16, M17)		
312	0159L00070 Harness, compmpressor 460V (M18, M19, M20, M21, M22, M23, M24, M25, M26, M27, M28, M29, M30)		
322	M0221641 TF SHOULDER SCREW (QTY 8)		
332	B1339533 COMPRESSOR GROMMET (QTY 8)		
NS	B1373315 ACCESS FITTING (QTY 6)		
NS	0163M00175 CAP WITH O-RING (M17)		

Evaporator, Condenser & Partition Assy

EVAPORATOR ASSEMBLY



CONDENSER ASSEMBLY



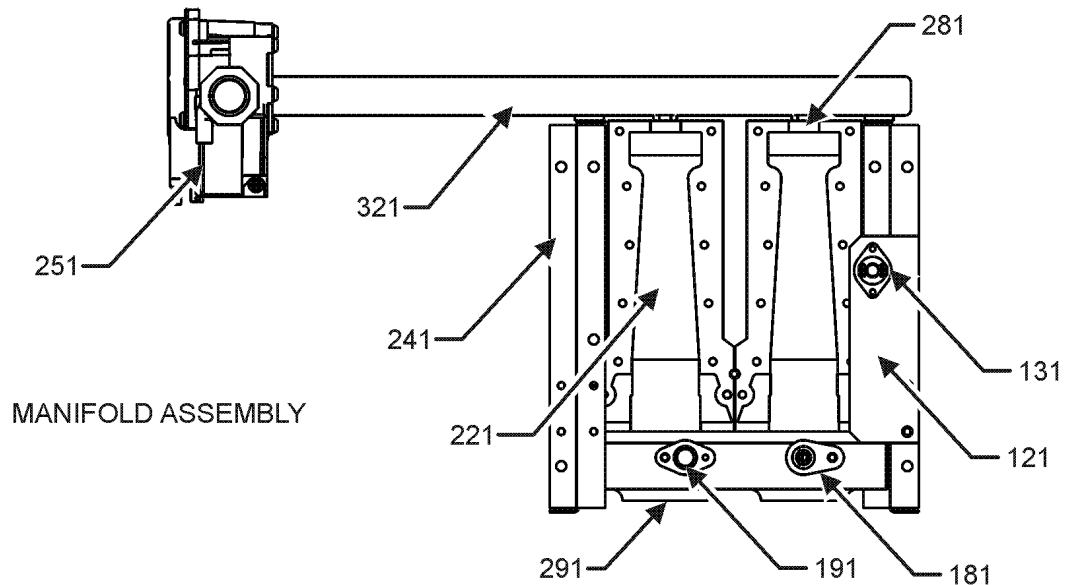
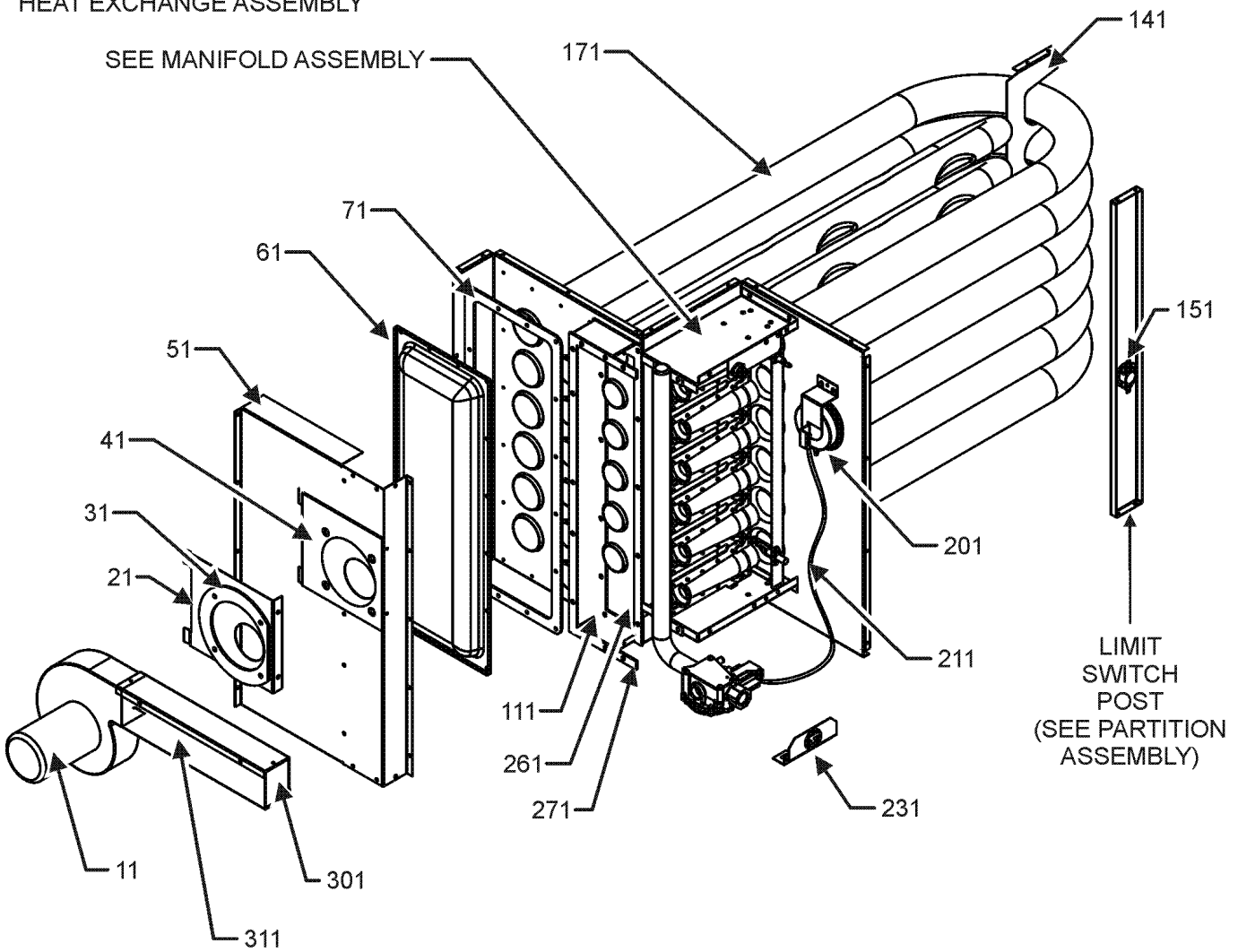
PARTITION ASSEMBLY

Evaporator, Condenser & Partition Assy

Ref. Part No: No:	Description:	Ref. Part No: No:	Description:
Image 1:		Expanded Model Nomenclature	
11	0202L00240	EVAP COIL ASSY, C1	M1 - DCG1502103VBXXBA
21	0202L00239	EVAP COIL ASSY, C2	M2 - DCG1502103VHDABA
31	0121L02056	BLOCKOFF, RIGHT VERTICAL	M3 - DCG1502103VHDBBA
41	0121L02054	BLOCKOFF, LEFT VERTICAL	M4 - DCG1502103VHDDBA
51	0121L02055	BLOCKOFF, MIDDLE	M5 - DCG1502103VHMCBA
71	0121L02053	VERT ANGLE, FILTER RACK LS	M6 - DCG1502103VRXXBA
81	0121L02083	VERT ANGLE, FILTER RACK RS	M7 - DCG1502103VVDTBA
91	0201L00390	COND COIL ASSY (QTY 2)	M8 - DCG1502103VVXDBA
101	0201L00390	COND COIL ASSY (QTY 2)	M9 - DCG1502103VWDVBA
111	0121L00522	BLOCKOFF-HEAT EXCHANGER	M10 - DCG1502103VWDXBA
121	0121L03117	DECK, BLOWER	M11 - DCG1502103VWXBBA
131	0121L00374	DECK SIDE CHANNEL	M12 - DCG1502103VWXNBA
141	0161L00002	DRAIN PAN	M13 - DCG1502103VXDXBA
151	0121L00366	BASE-HEAT EXCHANGER	M14 - DCG1502103VXXBA
231	0121L02997	SUPPORT, PAN, DRAIN	M15 - DCG1502103VXXABA
301	0121L03099	POST-LIMIT SWITCH	M16 - DCG1502103VXXXBA
311	0121L00136	BAFFLE-BLOWER	M17 - DCG1502103V1DDBA
321	0163L00071	DRAIN PAN PLUG	M18 - DCG1502104VAXVBA
331	0154L00009	GASKET-DRAIN PAN	M19 - DCG1502104VHXABA
361	0121L00168	BLOWER TRANSITION, RH END	M20 - DCG1502104VHXXBA
371	0121L00169	BLOWER TRANSITION, LH END	M21 - DCG1502104VVXCBA
381	0121L00092	BLOWER TRANSITION, FRONT	M22 - DCG1502104VWXCBA
391	0121L00094	BLOWER TRANSITION, BACK	M23 - DCG1502104VWXNBA
421	0121L01099RF	RAIL-BASE SIDES RF (QTY 2)	M24 - DCG1502104VXDXBA
431	0121L02130	MOUTING BRACKET, COND	M25 - DCG1502104VXSDBA
481	0121L00143	ANGLE-HT BASE BRACE	M26 - DCG1502104VXXABA
561	0121L01079	BLOCKOFF, CONTROL BOX	M27 - DCG1502104VXXBBA
NS	0160L00173	AIR FILTER 14 X20 X2 (QTY 2)	M28 - DCG1502104VXXXBA
NS	0160L00136	Air Filter 20x20x2 (QTY 4)	M29 - DCG1502107VXSXBA
NS	0121L01398	DECK, SUPPORT BLOWER (M2, M3, M4, M5, M7, M9, M10, M13, M14, M17, M24)	M30 - DCG1502107VXXXBA
NS	0121L01402	DECK, SUPPORT CONTROL (M2, M3, M4, M5, M7, M9, M10, M13, M14, M17, M24)	
NS	0121L00321	SMOKE DETECTOR COVER (QTY 2)	

Heat Exchange Assembly

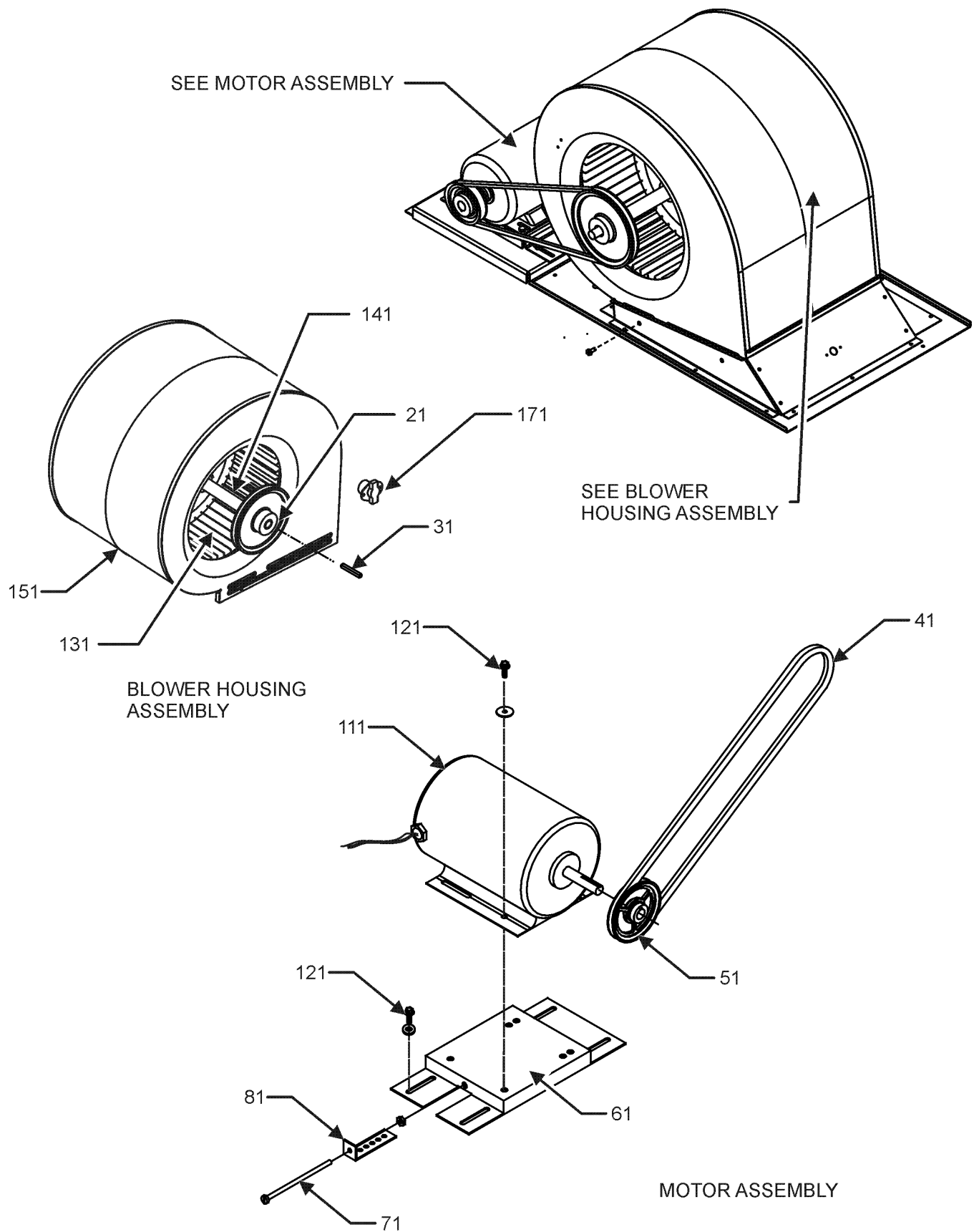
HEAT EXCHANGE ASSEMBLY



Heat Exchange Assembly

Ref. Part No: No:	Description:	Ref. Part No: No:	Description:
Image 1:		Expanded Model Nomenclature	
11	0131L00002 VENT MOTOR (M1, M2, M3, M4, M5, M6, M7, M8, M9, M10, M11, M12, M13, M14, M15, M16, M17, M18, M19, M20, M21, M22, M23, M24, M25, M26, M27, M28, M30)	M1 - DCG1502103VBXXBA	
21	0121L00080 MOUNTING PLATE-ID BLOWER	M2 - DCG1502103VHDABA	
31	0154L00007 GASKET, BLOWER/ORIFICE PLATE	M3 - DCG1502103VHDBBA	
41	0154L00006 GASKET, COLLECTOR/ORIFICE PLATE	M4 - DCG1502103VHDDBA	
51	0121L00077 COLLECTOR BOX COVER	M5 - DCG1502103VHMCBA	
61	0121L00072 REAR COVER, HEAT EXCHANGER	M6 - DCG1502103VRXXBA	
71	0154L00010 REAR COVER GASKET, HEAT EXCHANGER	M7 - DCG1502103VVDTBA	
111	0121L00076 COLLECTOR BOX CHANNEL	M8 - DCG1502103VVXDBA	
121	0121L00323 FLAME ROLLOUT BRACKET	M9 - DCG1502103VWDVBA	
131	10123532 MANUAL RESET LIMIT 350°F	M10 - DCG1502103VWDXBA	
141	0121L01436 SUPPORT BRACKET	M11 - DCG1502103VWXBBA	
151	B1370187 PRIMARY LIMIT SWITCH 160°F	M12 - DCG1502103VWXNBA	
171	0270L00752 PART TUBE ASSY 6B (M1, M2, M3, M4, M5, M6, M7, M8, M9, M10, M11, M12, M13, M15, M16, M17, M18, M19, M20, M21, M22, M23, M24, M26, M27, M28, M30)	M13 - DCG1502103VXDXBA	
171	0270L00171 PART/TUBE ASSY 6B (M14, M25, M29)	M14 - DCG1502103VXKXBA	
181	0130F00010 FLAME SENSOR	M15 - DCG1502103VXXABA	
191	20261709 IGNITOR	M16 - DCG1502103VXXXBA	
201	11112501 PRESSURE SWITCH	M17 - DCG1502103V1DDBA	
211	A3468601 PRESSURE SWITCH HOSE	M18 - DCG1502104VAXVBA	
221	0163L00000 BECKETT BURNER (QTY 6)	M19 - DCG1502104VHXABA	
231	0121L00147 PIPE BRACKET-GAS VALVE (M14, M25, M29)	M20 - DCG1502104VHXXBA	
241	0121G00268 BRACKET-BURNER TOP/BOT (QTY 2)	M21 - DCG1502104VVXCBA	
251	0151L00000 GAS VALVE (36H)	M22 - DCG1502104VWXCBA	
261	0154L00011 INNER GASKET, COLLECTOR BOX	M23 - DCG1502104VWXNBA	
271	0154L00012 OUTER GASKET, COLLECTOR BOX	M24 - DCG1502104VXDXBA	
281	0163L00007 ORIFICE #34 DRILL (QTY 6)	M25 - DCG1502104VXSDBA	
291	0121L00075 BRACKET-6 BURNERS	M26 - DCG1502104VXXABA	
301	0163L00006 FLUE SCREEN	M27 - DCG1502104VXXBBA	
311	0121L00049 HEAT EXCHANGER FLUE (QTY 2)	M28 - DCG1502104VXXXBA	
321	0163L00010 MANIFOLD - 6 BRNR	M29 - DCG1502107VXSXBA	
NS	0121L00130NG FLUE COLLAR	M30 - DCG1502107VXXXBA	
NS	B1392609 SEAL STRIP, RED, 1/8 X 1/2 X 100 (QTY 3)		

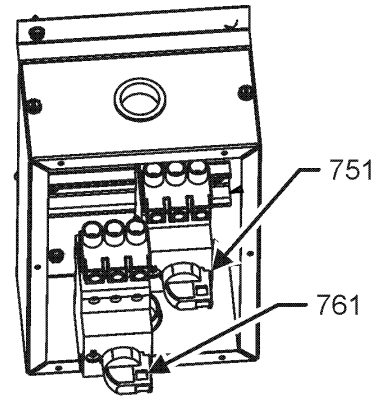
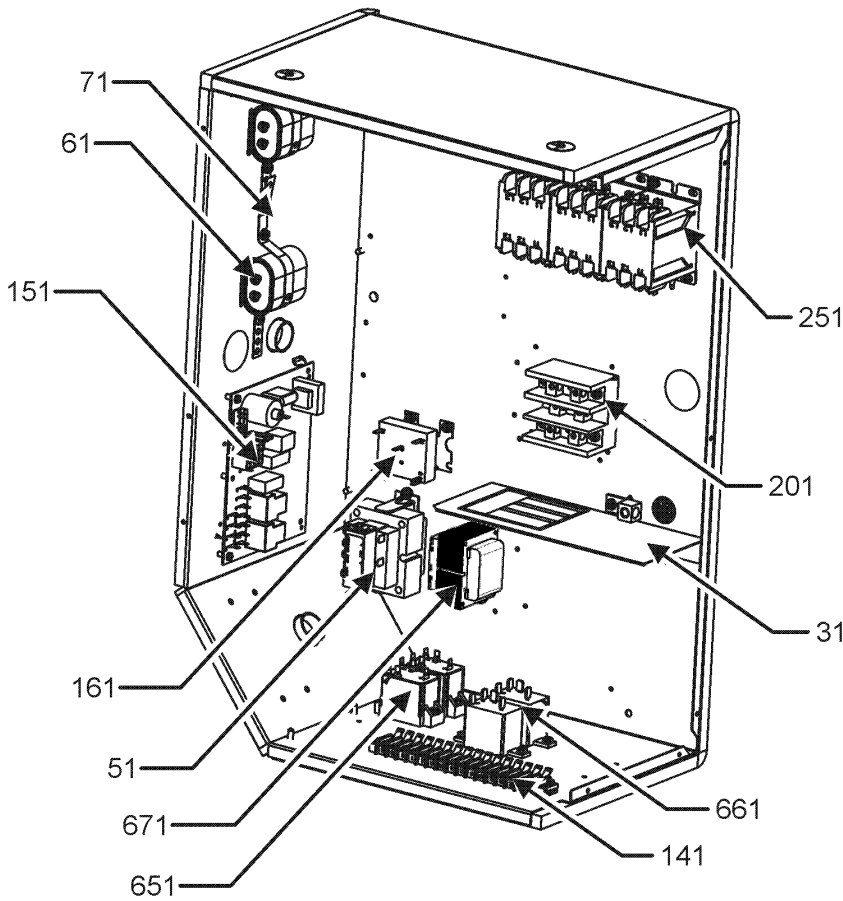
Belt Drive Blower and Motor Assembly



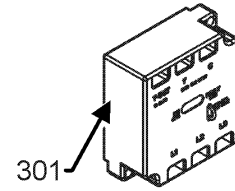
Belt Drive Blower and Motor Assembly

Ref. Part No:	Ref. Part No:	Description:	Description:
Image 1:		Expanded Model Nomenclature	
21	0163L00157	SHEAVE, FIXED AK79H	M1 - DCG1502103VBXXBA
31	0163M00407	MACHINE KEY, SPECIAL	M2 - DCG1502103VHDABA
41	0164L00001	NOTCHED FAN BELT AX49	M3 - DCG1502103VHDBBA
51	0163L00066	VP SHEAVE	M4 - DCG1502103VHDDBA
61	0121L01504	MOTOR BASE	M5 - DCG1502103VHMCBA
71	0163M00045	BOLT 1/4-20 X 4"	M6 - DCG1502103VRXXBA
81	3225000F	BELT TIGHTENER ANGLE	M7 - DCG1502103VVDTBA
111	0131L00070	MOTOR, 3 H.P., 3P (M1, M2, M3, M4, M5, M6, M7, M8, M9, M10, M11, M12, M13, M14, M15, M16, M17)	M8 - DCG1502103VVXDBA
111	0131L00071	MOTOR, 3 H.P., 3P (M18, M19, M20, M21, M22, M23, M24, M25, M26, M27, M28)	M9 - DCG1502103VWDVBA
111	0131L00027	MOTOR, 3 HP BELT DRIVE 575 V (M29, M30)	M10 - DCG1502103VWDXBA
121	B1393738	BOLT 1/4-20 X 3/4" (QTY 8)	M11 - DCG1502103VWXBBA
131	03-78497	BLOWER WHEEL	M12 - DCG1502103VWXNBA
141	04-11526	BLOWER SHAFT	M13 - DCG1502103VXDXBA
151	04-01526	BLOWER HOUSING	M14 - DCG1502103VXXBA
171	0130F00036	PRIMARY LIMIT - PINK	M15 - DCG1502103VXXABA
NS	04-02196	BLOWER BEARING & FRAME ASSY	M16 - DCG1502103VXXXBA
NS	0259L00191	HARNESS, BELT DRIVE MOTOR (M1, M2, M3, M4, M5, M6, M7, M8, M9, M10, M11, M12, M13, M14, M15, M16, M17, M18, M19, M20, M21, M22, M23, M24, M25, M26, M27, M28)	M17 - DCG1502103V1DDBA
NS	0259L00160	HARNESS-BELT DRIVE 2 SP MOTOR (M29, M30)	M18 - DCG1502104VAXVBA
			M19 - DCG1502104VHXABA
			M20 - DCG1502104VHXXBA
			M21 - DCG1502104VVXCBA
			M22 - DCG1502104VWXCBA
			M23 - DCG1502104VWXNBA
			M24 - DCG1502104VXDXBA
			M25 - DCG1502104VXSDBA
			M26 - DCG1502104VXXABA
			M27 - DCG1502104VXXBBA
			M28 - DCG1502104VXXXBA
			M29 - DCG1502107VXSXBA
			M30 - DCG1502107VXXXBA

Control Box Assembly

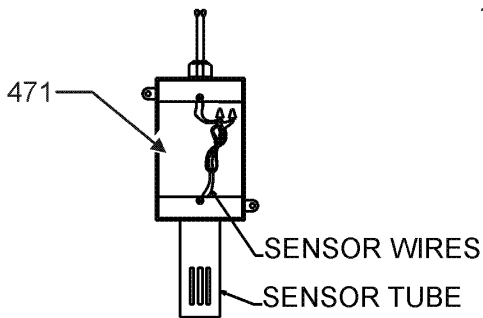
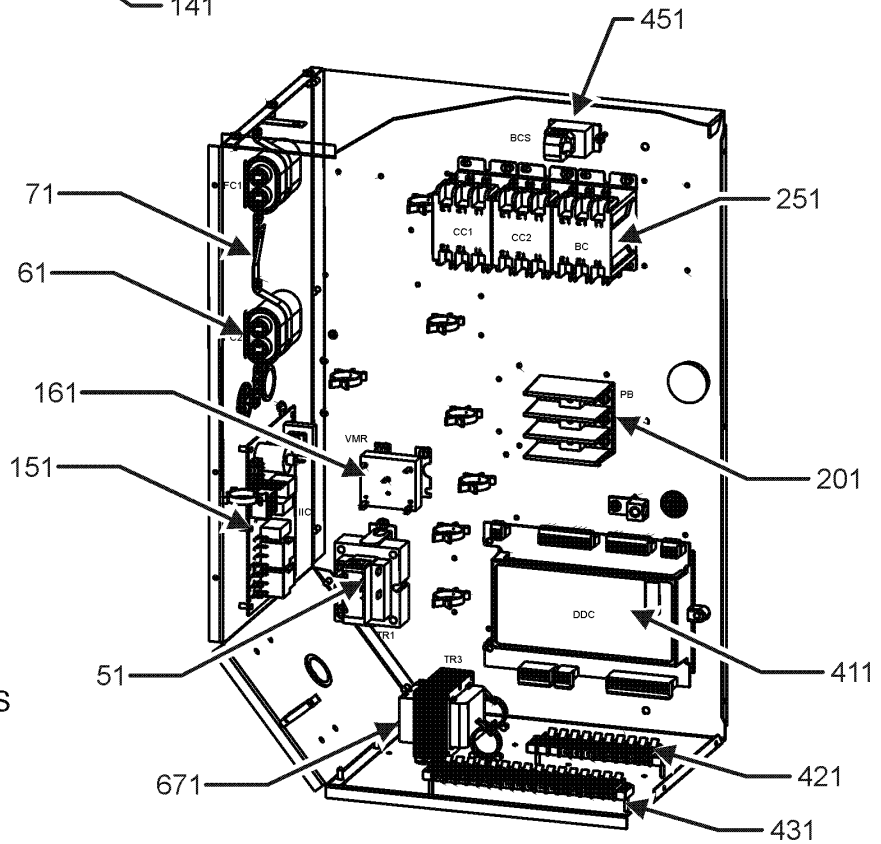


CIRCUIT BREAKER CONTROL ASSEMBLY



PHASE MONITOR DETAIL

CONTROL BOX FOR MODELS WITH DDC CONTROL



FRONT VIEW

Control Box Assembly

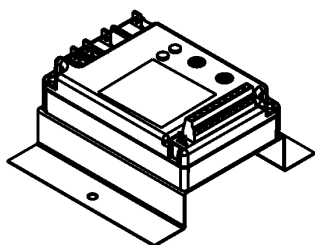
Ref. Part No:	Ref. Part No:	Description:	Description:	
Image 1:		Image 1:		
31	0121G00491	VOLTAGE BARRIER	NS 0259L00149 WIRE HARNESS ASSY	
51	0130M00594	TRANSFORMER (M1, M2, M3, M4, M5, M6, M7, M8, M9, M10, M11, M12, M13, M14, M15, M16, M17)	NS 0259L00152 WIRE HARNESS ASSY	
51	0130M00595	TRANSFORMER, 75VA, 480V TO 24V (M18, M19, M20, M21, M22, M23, M24, M25, M26, M27, M28)	NS 0259L00588 WIRE HARNESS DDC, 12.5 C/G (M1, M6)	
51	0130M00598	TRANSFORMER, 75VA, 575V TO 24V (M29, M30)	NS 0259L00510 WIRE HARNESS, ECONOMIZER	
61	CAP100000370LA	CAPACITOR 10/370V (M1, M2, M3, M4, M5, M6, M7, M8, M9, M10, M11, M12, M13, M14, M15, M16, M17, M18, M19, M20, M21, M22, M23, M24, M25, M26, M27, M28)	NS 0259L00090 WIRE HARNESS-SMOKE DETECTOR (M4, M8, M9, M12, M17, M18, M23, M25)	
61	CAP050000440LA	CAPACITOR 5/440V (M29, M30)	NS 0259L00557 WIRING HARNESS (M17)	
71	20520901	CAPACITOR STRAP (QTY 2)	Expanded Model Nomenclature	
141	0130M00038	TERMINAL BOARD	M1 - DCG1502103VBXXBA	
151	PCBAG123	IGNITION BOARD, DSI INTEGRATED	M2 - DCG1502103VHDBA	
161	0130M00025	RELAY, SPDT	M3 - DCG1502103VHDBBA	
201	16220-3	BLOCK, POWER	M4 - DCG1502103VHDDBA	
251	CONT3P030024V	CONTACTOR 30 AMP, 3P, 24V (QTY 4)	M5 - DCG1502103VHMCBA	
301	0130L00105	PHASE MONITOR (M5)	M6 - DCG1502103VRXXBA	
411	PCBCG103	PCB, CONTROL, HP, GAS ,AC (M1, M6)	M7 - DCG1502103VVDTBA	
421	0130M00274	TERMINAL BOARD (M1, M6)	M8 - DCG1502103VXDDBA	
431	0130M00275	TERMINAL BOARD (M1, M6)	M9 - DCG1502103VWDVBA	
451	0259L00368	CURRENT SWITCH WITH TERMS (M1, M6)	M10 - DCG1502103VWDXBA	
471	0130L00108	OD Air Temp Sensor (M1, M6)	M11 - DCG1502103VWXBBA	
651	10135604	RELAY (QTY 2)	M12 - DCG1502103VWXNBA	
661	0130M00242	RELAY, 24V (QTY 2)	M13 - DCG1502103VXDXBA	
671	0130M00596	TRANS, 150VA, 480V TO 230V (M18, M19, M20, M21, M22, M23, M24, M25, M26, M27, M28)	M14 - DCG1502103VXXBBA	
671	0130M00597	TRANS, 150VA, 575V TO 230V (M29, M30)	M15 - DCG1502103VXXABA	
751	0130L00082	ROTARY MANUAL MOTOR PROTECTOR (M29, M30)	M16 - DCG1502103VXXXBA	
761	0130L00082	ROTARY MANUAL MOTOR PROTECTOR (M29, M30)	M17 - DCG1502103V1DDBA	
NS	0259L00153	2 SPEED CONTROL HARNESS	M18 - DCG1502104VAXVBA	
NS	0259L00155	2 SPEED RELAY HARNESS	M19 - DCG1502104VHXABA	
NS	0259L00161	CIRCUIT BREAKER HARNESS (M29, M30)	M20 - DCG1502104VHXXBA	
NS	0130L00112	Duct Temp Sensor (M1, M6)	M21 - DCG1502104VVXCBA	
NS	0259L00401	HARN, BINARY INPUT, DDC (M1, M6)	M22 - DCG1502104VWXCBA	
NS	0259L00382	HARN, CNTL PWR, DDC (M1, M6)	M23 - DCG1502104VWXNBA	
NS	0259L00420	HARN, IIC, DDC 2 SP (M1, M6)	M24 - DCG1502104VXDXBA	
NS	0259L00399	HARN, PWR XFMR CNTL (M1, M6)	M25 - DCG1502104VXSDBA	
NS	0259L00589	HARN, RELAY OUTPUT, DDC 12.5 G (M1, M6)	M26 - DCG1502104VXXABA	
NS	0259L00191	HARNESS, BELT DRIVE MOTOR (M1, M2, M3, M4, M5, M6, M7, M8, M9, M10, M11, M12, M13, M14, M15, M16, M17, M18, M19, M20, M21, M22, M23, M24, M25, M26, M27, M28)	M27 - DCG1502104VXXBBA	
NS	0259L00496	HARNESS, NON POW, CONV, OUT (M2, M15, M19, M26)	M28 - DCG1502104VXXXBA	
NS	0259L00160	HARNESS-BELT DRIVE 2 SP MOTOR (M29, M30)	M29 - DCG1502107VXSXBA	
NS	0259L00092	HARNESS-SMOKE DETECTOR SENSOR (M4, M8, M9, M12, M17, M18, M23, M25)	M30 - DCG1502107VXXXBA	
NS	0130L00107	ROOM SENSOR (M1, M6)		
NS	0259L00427	WIRE ASSY (M5)		
NS	0259L00428	WIRE ASSY (M5)		
NS	0259L00502	WIRE HARNESS		
NS	0259L00148	WIRE HARNESS ASSY		

Accessory Parts

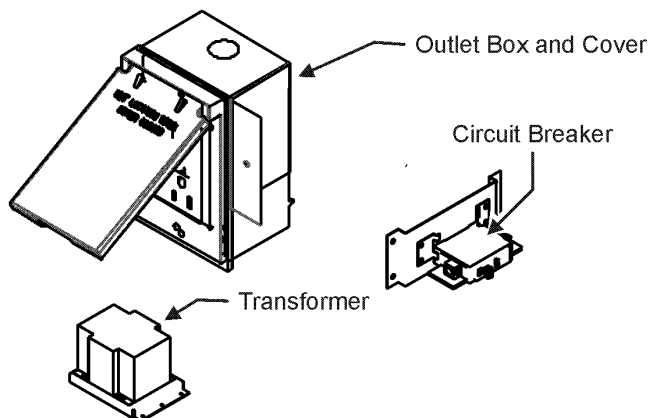
ACCESSORY PARTS LIST

NOTE: NOT ALL OPTIONS AVAILABLE FOR ALL PRODUCTS

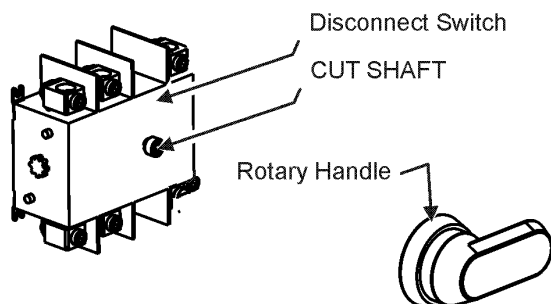
1 LOW AMBIENT KITS



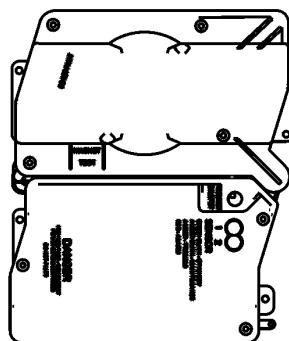
2 GFCI CONVENIENCE OUTLET



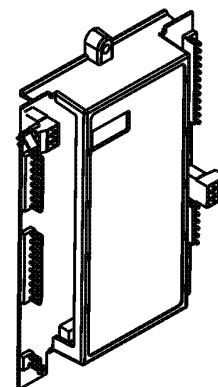
3 DISCONNECT MODULE (NON-FUSED)



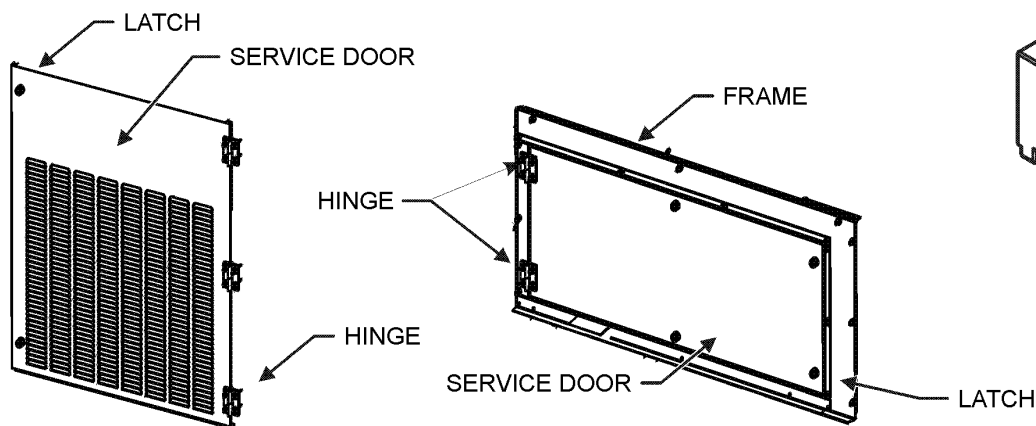
4 SMOKE DETECTORS



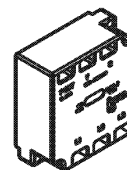
5 DDC CONTROL



6 HINGED DOOR ASSEMBLIES



7 PHASE MONITOR



Accessory Parts

Ref. Part No:	Description:	Ref. Part No:	Description:
Image 1:		Image 1:	
NS DDNECNJ90150B	7.5-12.5 TON DFLOW ECON (M7, M8, M9, M10, M11, M12, M21, M22, M23)	NS D4S	SMOKE DETECTOR, SENSOR ONLY (M7)
NS 1036610B	7.5-12.5 TON DFLOW ECONOMIZER (M18)	NS ECP400-5	SURVEYOR ECP (M17)
NS 10366D10B	7.5-12.5T DFLOW ECON, DDC (M6)	NS 0130L00027	SWITCH-DISCONNECT 100A (M2, M3, M4, M5, M6, M9, M10, M11, M12, M17)
NS 0121L00316	BRACKET-CONV OUTLET MOUNT (M2, M3, M7, M11, M12, M15, M19, M23, M26, M27)	NS 0130L00046	SWITCH-DISCONNECT 60A (M19, M20, M22, M23)
NS 0121L00768	BRACKET-SMOKE DETECTOR (M7)	NS 0130M00061	TRANSFORMER, CONVENIENCE OUTLET (M3, M7, M11, M12, M23, M27)
NS 0130M00065	CIRCUIT BREAKER, CONVENIENCE OUTLET (M3, M7, M11, M12, M23, M27)	NS 0259L00557	WIRE HARNESS (M17)
NS 0121L00973NG	DISCONNECT SWITCH COVER (M2, M3, M4, M5, M6, M9, M10, M11, M12, M17, M19, M20, M22, M23)	Expanded Model Nomenclature	
NS 0121L01414NG	DOOR FRAME, BLOWER (M2, M3, M4, M5, M7, M9, M10, M13, M14, M17, M24)	M1 - DCG1502103VBXXBA	
NS 0121L01417NG	DOOR FRAME, CONTROL (M2, M3, M4, M5, M7, M9, M10, M13, M14, M17, M24)	M2 - DCG1502103VHDAABA	
NS 0121L02483NG	DOOR, SERVICE, BACK, BLOWER (M2, M3, M4, M5, M7, M9, M10, M13, M14, M17, M24)	M3 - DCG1502103VHDBBA	
NS 0121L02482NG	DOOR, SERVICE, FRONT, BLOWER (M2, M3, M4, M5, M7, M9, M10, M13, M14, M17, M24)	M4 - DCG1502103VHDDBA	
NS 0130L00012	GANG BOX-GFCI OUTLET (M2, M3, M7, M11, M12, M15, M19, M23, M26, M27)	M5 - DCG1502103VHMCBA	
NS 0130L00039	HANDLE, ROTARY (M2, M3, M4, M5, M6, M9, M10, M11, M12, M17, M19, M20, M22, M23)	M6 - DCG1502103VRXXBA	
NS 0163M00307	HINGE, LEFT HAND (M2, M3, M4, M5, M7, M9, M10, M13, M14, M17, M24)	M7 - DCG1502103VVDTBA	
NS 0163M00308	HINGE, RIGHT HAND (M2, M3, M4, M5, M7, M9, M10, M13, M14, M17, M24)	M8 - DCG1502103VVXDBA	
NS 0163M00322	LATCH (M2, M3, M4, M5, M7, M9, M10, M13, M14, M17, M24)	M9 - DCG1502103VWDVBA	
NS 0130M00059	LOW AMBIENT KIT (M18, M21, M22)	M10 - DCG1502103VWDXBA	
NS 0121L02221NG	PNT, DOOR FRAME, FILTER (M2, M3, M4, M5, M7, M9, M10, M13, M14, M17, M24)	M11 - DCG1502103VWXBBA	
NS 0121L02222NG	PNT, SERVICE DOOR BACK FILTER (M2, M3, M4, M5, M7, M9, M10, M13, M14, M17, M24)	M12 - DCG1502103VWXNBA	
NS 0121L02219NG	PNT, SERVICE DOOR FRONT FILTER (M2, M3, M4, M5, M7, M9, M10, M13, M14, M17, M24)	M13 - DCG1502103VXDXBA	
NS 0161G00012	POWER OUTLET BOX (M2, M3, M7, M11, M12, M15, M19, M23, M26, M27)	M14 - DCG1502103VXKXBA	
NS 0130L00103	RECEPTACLE-GFCI OUTLET (M2, M3, M7, M11, M12, M15, M19, M23, M26, M27)	M15 - DCG1502103VXXABA	
NS RS400	REMOTE SENSOR (M17)	M16 - DCG1502103VXXXBA	
NS SP400	SENSOR PACK (M17)	M17 - DCG1502103V1DDBA	
NS 0121L01416NG	SERVICE DOOR BACK, CONTROL (M2, M3, M4, M5, M7, M9, M10, M13, M14, M17, M24)	M18 - DCG1502104VAXVBA	
NS 0121L01415NG	SERVICE DOOR FRONT, CONTROL (M2, M3, M4, M5, M7, M9, M10, M13, M14, M17, M24)	M19 - DCG1502104VHXABA	
NS 0130L00056	SHAFT, CUT (M2, M3, M4, M5, M6, M9, M10, M11, M12, M17)	M20 - DCG1502104VHXXBA	
NS 0130L00057	SHAFT, CUT (M19, M20, M22, M23)	M21 - DCG1502104VVXCBA	
NS 0130L00049	SHAFT, DISCONNECT (M2, M3, M4, M5, M6, M9, M10, M11, M12, M17, M19, M20, M22, M23)	M22 - DCG1502104VWXCBA	
NS D4120	SMOKE DETECTOR, PHOTO 4WIRE (M7)	M23 - DCG1502104VWXNBA	
		M24 - DCG1502104VXDXBA	
		M25 - DCG1502104VXSDBA	
		M26 - DCG1502104VXXABA	
		M27 - DCG1502104VXXBBA	
		M28 - DCG1502104VXXXBA	
		M29 - DCG1502107VXSXBA	
		M30 - DCG1502107VXXXBA	