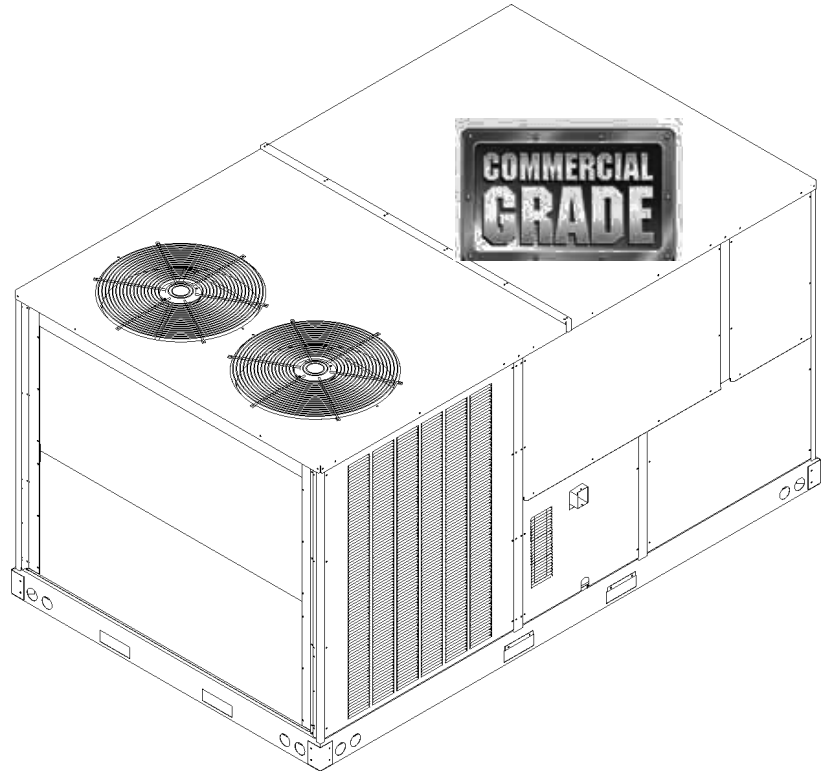


## Commercial 12.5 Ton Package Gas Unit

DCG1502103BASOAA  
DCG1502103BAXGAA  
DCG1502103BAXXAA  
DCG1502103BAXYAA  
DCG1502103BHAXAA  
DCG1502103BHDXAA  
DCG1502103BHXXAA  
DCG1502103BJXAAA  
DCG1502103BJXFAA  
DCG1502103BJXZAA  
DCG1502103BXSXAA  
DCG1502103BXXCAA  
DCG1502103BXXEAA  
DCG1502103BXXNAA  
DCG1502103BXXXAA  
DCG1502104BHXAAB  
DCG1502104BHXBAB  
DCG1502104BHXXAB  
DCG1502104BJSAAAB  
DCG1502104BJSFAB  
DCG1502104BJXAAB  
DCG1502104BJXGAA  
DCG1502104BXSXAB  
DCG1502104BXXCAB  
DCG1502104BXXXAA  
DCG1502104BXXXAB  
DCG1502107BAXXAB  
DCG1502107BXSXAA  
DCG1502107BXXXAA  
DCG1502107BXXXAB



This manual is to be used by qualified technicians only.

This manual replaces RP-D1011L.

© 2013-2015 **DAIKIN COMPANY, L.P.** ♦ 5151 San Felipe St., Suite 500 ♦ Houston, TX 77056

# Important Information

---

## Index

Functional Parts List .....	3
Illustration and Parts .....	4 - 19

*Views shown are for parts illustrations only, not servicing procedures*

### Text Codes:

AR - As Required

NA - Not Available

NS - Not Shown

00000000 - See Note

QTY - Quantity Example (QTY 3) (If Quantity not shown, Quantity = 1)

M - Model Example (M1) (If M Code not shown, then part is used on all Models)

### Expanded Model Nomenclature:

Example M1 - Model#1 M2 - Model#2 M3 - Model#3
---

Daikin Company, L.P. is not responsible for personal injury or property damage resulting from improper service. Review all service information before beginning repairs.

Warranty service must be performed by an authorized technician, using authorized factory parts. If service is required after the warranty expires, Daikin Company, L.P. also recommends contacting an authorized technician and using authorized factory parts.

Daikin Company, L.P. reserves the right to discontinue, or change at any time, specifications or designs without notice or without incurring obligations.

For assistance within the U.S.A. contact:

Consumer Affairs Department

Daikin North America, LLC

7401 Security Way

Houston, Texas 77040

855-770-5678-Telephone

713-863-2382-Facsimile

For assistance outside the U.S.A. contact:

International Division

Daikin North America, LLC

7401 Security Way

Houston, Texas 77040

713-861-2500-Telephone

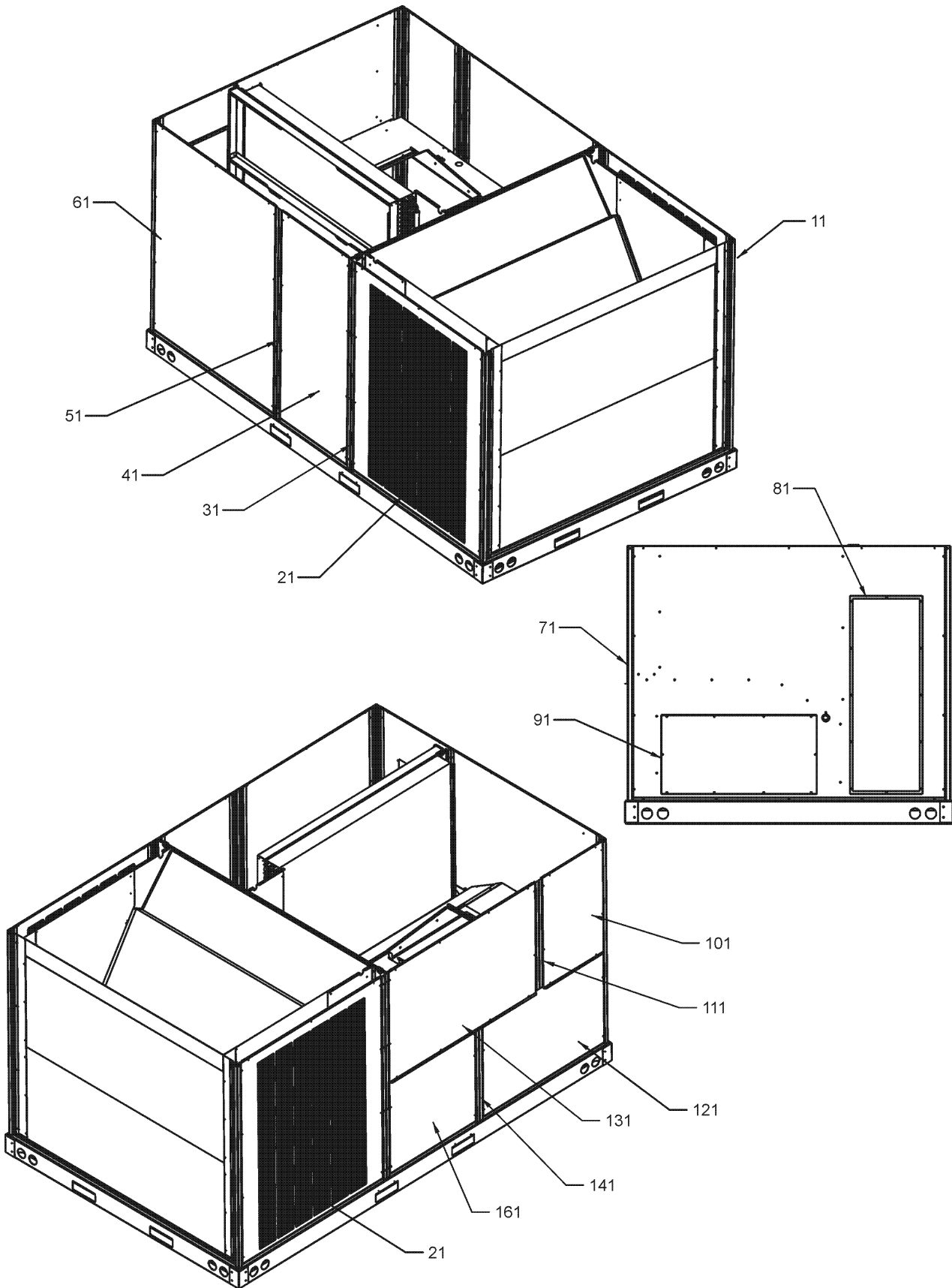
713-863-2382-Facsimile

# Functional Parts

**Part No:**      **Description:**

Part No:	Description:	Expanded Model Nomenclature
0130M00025	24V RELAY	M1 - DCG1502103BASOAA
B3240004	BELT DRIVE MOTOR 2 HP (M1, M2, M3, M4, M5, M6, M7, M8, M9, M10, M11, M12, M13, M14, M15, M16, M17, M18, M19, M20, M21, M22, M23, M24, M25, M26)	M2 - DCG1502103BAXGAA M3 - DCG1502103BAXXAA M4 - DCG1502103BAXYAA M5 - DCG1502103BHXAAA M6 - DCG1502103BHXDAA M7 - DCG1502103BHXXAA M8 - DCG1502103BJXAAA M9 - DCG1502103BJXFAA M10 - DCG1502103BJXZAA M11 - DCG1502103BXSXAA M12 - DCG1502103BXXCAA M13 - DCG1502103BXXEAA M14 - DCG1502103BXXNAA M15 - DCG1502103BXXXAA M16 - DCG1502104BHXAAB M17 - DCG1502104BHXBAB M18 - DCG1502104BHXXAB M19 - DCG1502104BJSAAAB M20 - DCG1502104BJSFAB M21 - DCG1502104BJXAAB M22 - DCG1502104BJXGAA M23 - DCG1502104BXSXAB M24 - DCG1502104BXXCAB M25 - DCG1502104BXXXAA M26 - DCG1502104BXXXAB M27 - DCG1502107BAXXAB M28 - DCG1502107BXSXAA M29 - DCG1502107BXXXAA M30 - DCG1502107BXXXAB
0131L00006	BELT DRIVE MOTOR 3 HP 575 V (M27, M28, M29, M30)	
0151M00012	BI-FLOW FILTER DRIER	
CAP100000370LA	CAPACITOR 10/370V (M1, M2, M3, M4, M5, M6, M7, M8, M9, M10, M11, M12, M13, M14, M15, M16, M17, M18, M19, M20, M21, M23, M24, M26)	
CAP050000370LA	CAPACITOR 5/370V (M22, M25, M28, M29)	
CAP050000440LA	CAPACITOR 5/440V (M27, M30)	
ZP67KCETFD130	COMPRESSOR 67000, 460/60/3 (M16, M17, M18, M19, M20, M21, M22, M23, M24, M25, M26)	
ZP67KCETF5130	COMPRESSOR 67500, 200/230/60/3 (M1, M2, M3, M4, M5, M6, M7, M8, M9, M10, M11, M12, M13, M14, M15)	
ZP67KCETFE130	COMPRESSOR 67500, 575/60/3 (M27, M28, M29, M30)	
0131M00430	COND MOTOR 1/3 HP, 1 SP, 6 PL (M1, M2, M3, M4, M5, M6, M7, M8, M9, M10, M11, M12, M13, M14, M15)	
B13400249	COND MOTOR 1/3 HP, 460V (M22, M25)	
0131M00179	COND MOTOR 1/3 HP, 6 PL, 575V (M28, M29)	
0131M00500	COND MOTOR 1/3 HP, OD, LAK (M27, M30)	
0131M00433	COND MOTOR 460/60 1/3 HP (M16, M17, M18, M19, M20, M21, M23, M24, M26)	
CONT3P030024V	CONTACTOR 30 AMP, 3P, 24V (QTY 3)	
0130M00074	CUT-OUT SWITCH, HIGH PRESSURE	
0130M00075	CUT-OUT SWITCH, LOW PRESSURE	
10625733	FAN BLADE 22" ALUM CCW (QTY 2)	
0130F00010	FLAME SENSOR	
0151L00000	GAS VALVE (36H)	
PCBAG123	IGNITION BOARD, DSI INTEGRATED	
20261709	IGNITOR	
10123532	MANUAL RESET LIMIT 350°F	
0164L00001	NOTCHED FAN BELT AX49	
11112501	PRESSURE SWITCH	
0130F00036	PRIMARY LIMIT - PINK	
B1370187	PRIMARY LIMIT SWITCH 160°F	
0130M00038	TERMINAL BOARD	
0130M00144	TRANSFORMER (M1, M2, M3, M4, M5, M6, M7, M8, M9, M10, M11, M12, M13, M14, M15)	
0130M00146	TRANSFORMER 480V TO 230V, 150VA (M16, M17, M18, M19, M20, M21, M22, M23, M24, M25, M26)	
0130M00145	TRANSFORMER 480V to 24V, 75VA (M16, M17, M18, M19, M20, M21, M22, M23, M24, M25, M26)	
0130M00147	TRANSFORMER 575V TO 230V, 150VA (M27, M28, M29, M30)	
0130M00148	TRANSFORMER 575V to 24V, 75VA (M27, M28, M29, M30)	
0130M00061	TRANSFORMER, CONVENIENCE OUTLET (M1, M14, M17)	
0131L00002	VENT MOTOR	

# Cabinet Assembly



# Cabinet Assembly

Ref. Part No:	Part No:	Description:	Ref. Part No:	Part No:	Description:
---------------	----------	--------------	---------------	----------	--------------

**Image 1:**

11	0121L00979RFNG	CORNER POST (QTY 4)
21	0152L00001	GRILLE-CONDENSER (QTY 2)
31	0121L00980RFNG	ROLL FORM SIDE POST (QTY 2)
41	0121L00759NG	FILTER DOOR
51	0121L00757RFNG	FILTER POST
61	0121L00378NG	ECONOMIZER DOOR
71	0121L01062NG	DUCT PANEL
81	0121L00082NG	RETURN DUCT COVER
91	0270L00494	SUPPLY DUCT COVER
101	0121L01078NG	DOOR, CONTROL PAINTED
111	0121L00817RFNG	CONTROL POST
121	0121L00767NG	ELECTRIC HEAT DOOR
131	0121L00819NG	BLOWER DOOR
141	0121L00765RFNG	BURNER BOX POST
161	0121L00766NG	BURNER DOOR
NS	0121L00129	DOOR RAIN SHIELD
NS	0164L00009	GASKET-RUBBER, CPOST (QTY 3)
NS	0164L00011	GASKET-RUBBER, SIDE POST (QTY 4)

**Expanded Model Nomenclature**

M1 - DCG1502103BASOAA
M2 - DCG1502103BAXGAA
M3 - DCG1502103BAXXAA
M4 - DCG1502103BAXYAA
M5 - DCG1502103BHXAAA
M6 - DCG1502103BHXDAA
M7 - DCG1502103BHXXAA
M8 - DCG1502103BJXAAA
M9 - DCG1502103BJXFAA
M10 - DCG1502103BJXZAA
M11 - DCG1502103BXSXAA
M12 - DCG1502103BXXCAA
M13 - DCG1502103BXXEAA
M14 - DCG1502103BXXNAA
M15 - DCG1502103BXXXAA
M16 - DCG1502104BHXAAB
M17 - DCG1502104BHXBAB
M18 - DCG1502104BHXXAB
M19 - DCG1502104BJS AAB
M20 - DCG1502104BJSFAB
M21 - DCG1502104BJXAAB
M22 - DCG1502104BJXGAA
M23 - DCG1502104BXSXAB
M24 - DCG1502104BXXCAB
M25 - DCG1502104BXXXAA
M26 - DCG1502104BXXXAB
M27 - DCG1502107BAXXAB
M28 - DCG1502107BXSXAA
M29 - DCG1502107BXXXAA
M30 - DCG1502107BXXXAB

# Top Panel / Tubing Assembly

Image 1

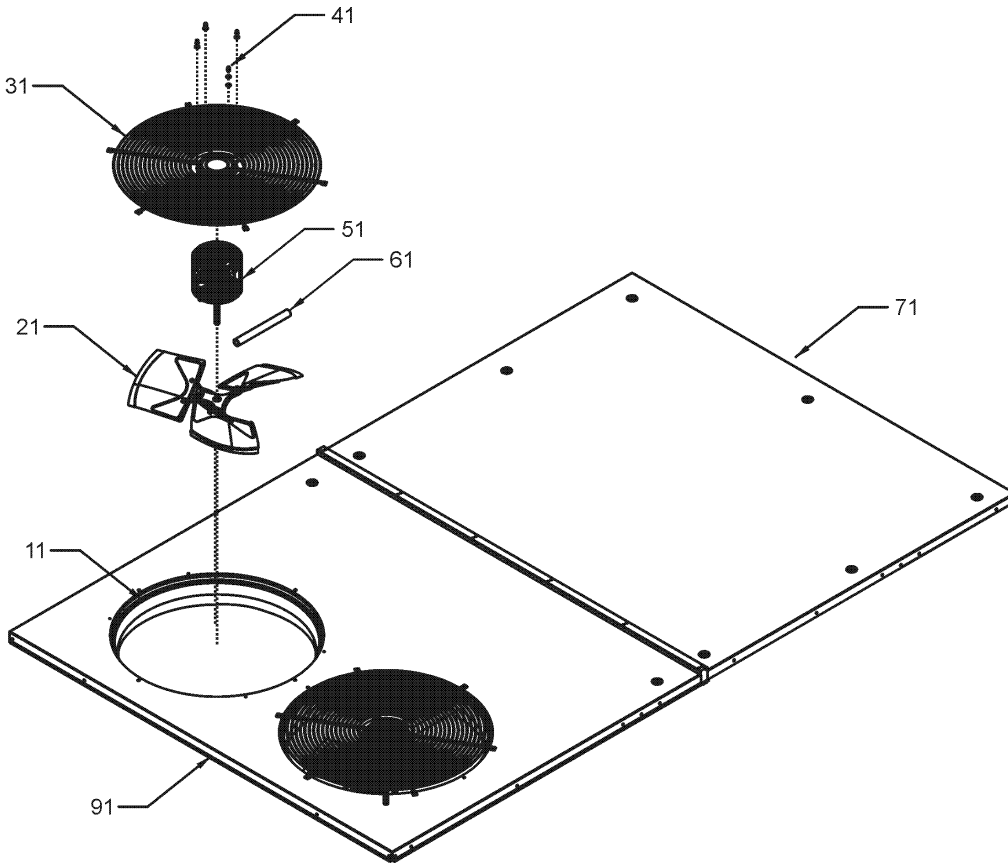
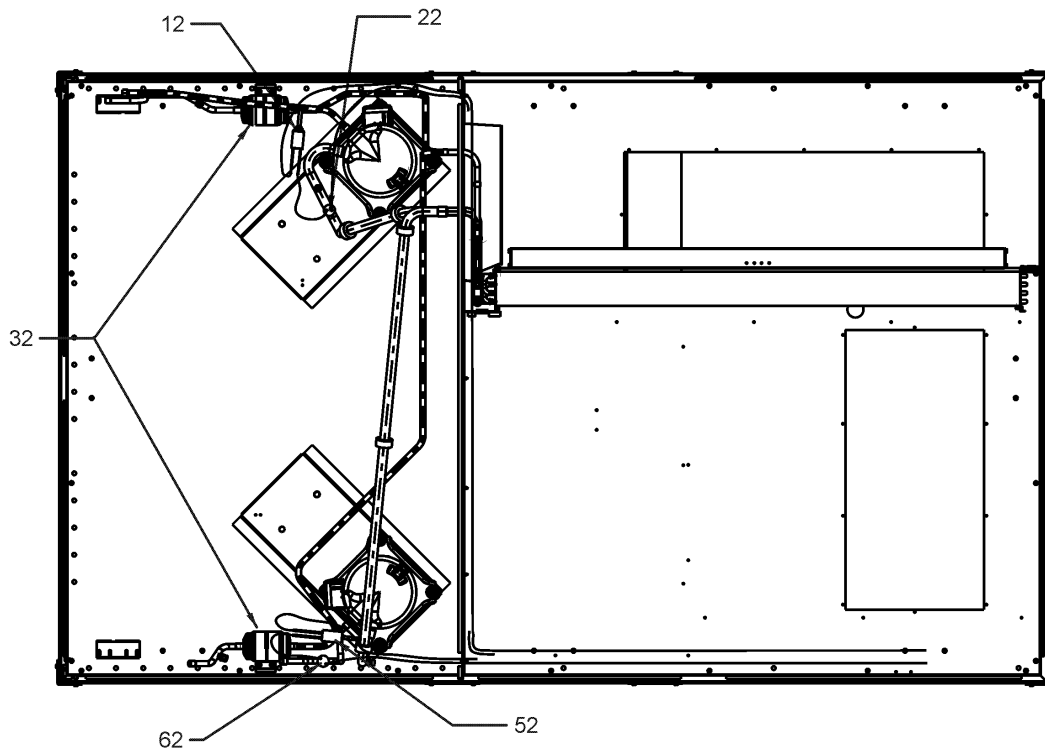


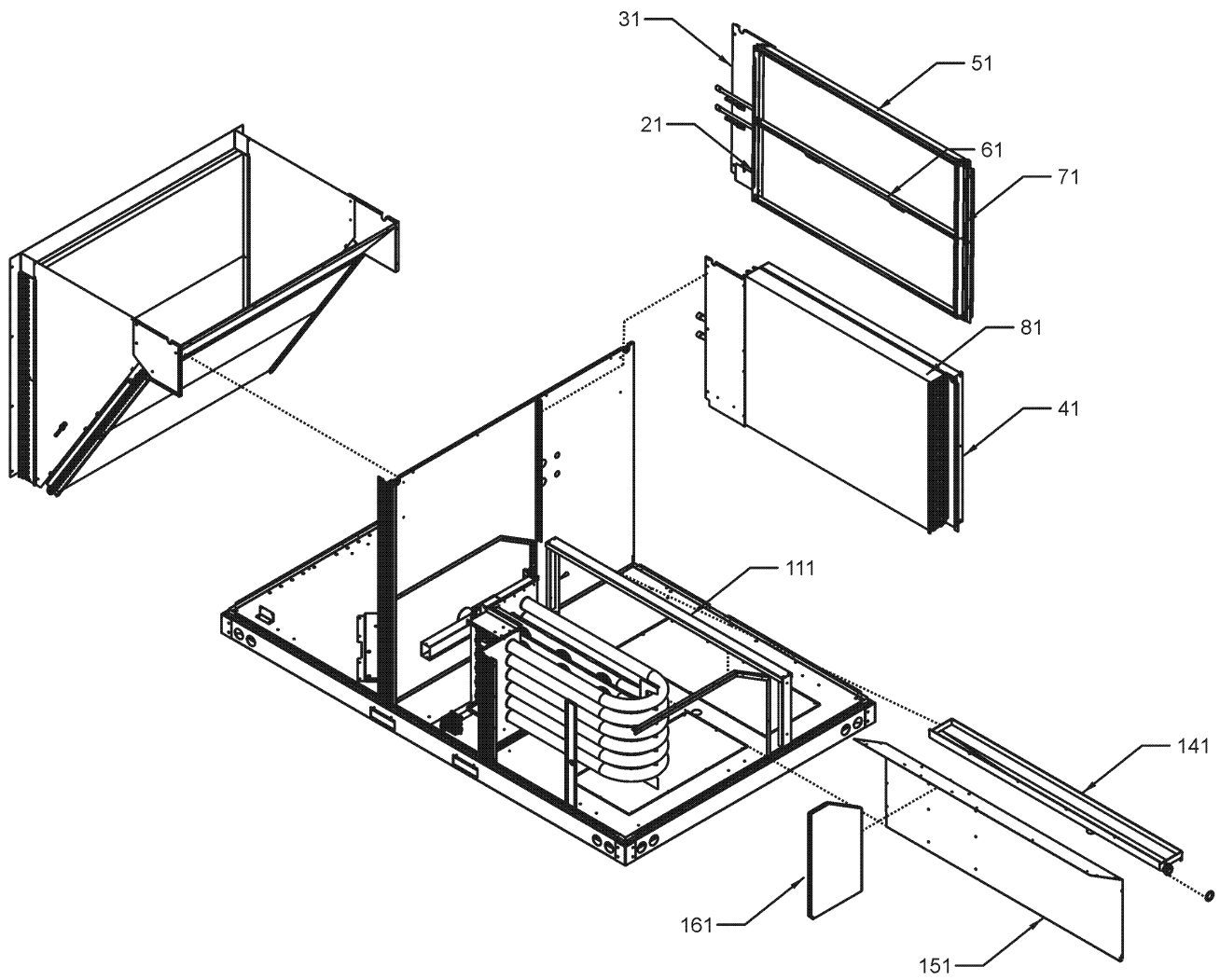
Image 2



# Top Panel / Tubing Assembly

Ref. Part No:	Description:	Ref. Part No:	Description:
<b>Image 1:</b>		<b>Expanded Model Nomenclature</b>	
11	0161L00000 VENTURI RING 22" (QTY 2)	M1	- DCG1502103BASOAA
21	10625733 FAN BLADE 22" ALUM CCW (QTY 2)	M2	- DCG1502103BAXGAA
31	0152G00003 FAN GRILLE (M22, M25, M28, M29)	M3	- DCG1502103BAXXAA
31	0152G00000 FAN GRILLE, RAISED (M1, M2, M3, M4, M5, M6, M7, M8, M9, M10, M11, M12, M13, M14, M15, M16, M17, M18, M19, M20, M21, M23, M24, M26, M27, M30)	M4	- DCG1502103BAXYAA
41	0163M00006P ACORN NUT 5/16 HEX BLACK (QTY 8)	M5	- DCG1502103BHXAAA
51	0131M00430 COND MOTOR 1/3 HP, 1 SP, 6 PL (M1, M2, M3, M4, M5, M6, M7, M8, M9, M10, M11, M12, M13, M14, M15)	M6	- DCG1502103BHXDAA
51	B13400249 COND MOTOR 1/3 HP, 460V (M22, M25)	M7	- DCG1502103BHXXAA
51	0131M00179 COND MOTOR 1/3 HP, 6 PL, 575V (M28, M29)	M8	- DCG1502103BJXAAA
51	0131M00500 COND MOTOR 1/3 HP, OD, LAK (M27, M30)	M9	- DCG1502103BJXFAA
51	0131M00433 COND MOTOR 460/60 1/3 HP (M16, M17, M18, M19, M20, M21, M23, M24, M26)	M10	- DCG1502103BJXZAA
61	17788000083F PVC CONDUIT 8.25" (QTY 2)	M11	- DCG1502103BXSXAA
71	0121L00497NG TOP INDOOR	M12	- DCG1502103BXXCAA
91	0121L01105NG TOP OUTDOOR	M13	- DCG1502103BXXEAA
NS	0259L00025 COND MOTOR HARNESS 230V (M1, M2, M3, M4, M5, M6, M7, M8, M9, M10, M11, M12, M13, M14, M15, M27, M28, M29, M30)	M14	- DCG1502103BXXNAA
NS	0259L00027 COND MOTOR HARNESS 230V (M4, M9, M12)	M15	- DCG1502103BXXXAA
NS	0259L00026 COND MOTOR HARNESS 460V (M16, M17, M18, M19, M20, M21, M22, M23, M24, M25, M26)	M16	- DCG1502104BHXAAB
NS	0259L00028 COND MOTOR HARNESS 460V (M16, M17, M18, M19, M20, M21, M22, M23, M24, M25, M26)	M17	- DCG1502104BHXBAB
<b>Image 2:</b>		M18	- DCG1502104BHXXAB
12	0130M00074 CUT-OUT SWITCH, HIGH PRESSURE	M19	- DCG1502104BJSAA
22	0130M00075 CUT-OUT SWITCH, LOW PRESSURE	M20	- DCG1502104BJSFAB
32	0151M00012 BI-FLOW FILTER DRIER	M21	- DCG1502104BJXAAB
32	0151M00012 BI-FLOW FILTER DRIER	M22	- DCG1502104BJXGAA
52	0130M00075 CUT-OUT SWITCH, LOW PRESSURE	M23	- DCG1502104BXSXAB
62	0130M00074 CUT-OUT SWITCH, HIGH PRESSURE	M24	- DCG1502104BXXCAB
NS	B1373315 ACCESS FITTING (QTY 4)	M25	- DCG1502104BXXXAA
NS	0163M00175 CAP WITH O-RING (QTY 4)	M26	- DCG1502104BXXXAB
		M27	- DCG1502107BAXXAB
		M28	- DCG1502107BXSXAA
		M29	- DCG1502107BXXXAA
		M30	- DCG1502107BXXXAB

# Evaporator / Partition Assembly



# Evaporator / Partition Assembly

Ref. Part No: No:	Description:	Ref. Part No: No:	Description:
-------------------	--------------	-------------------	--------------

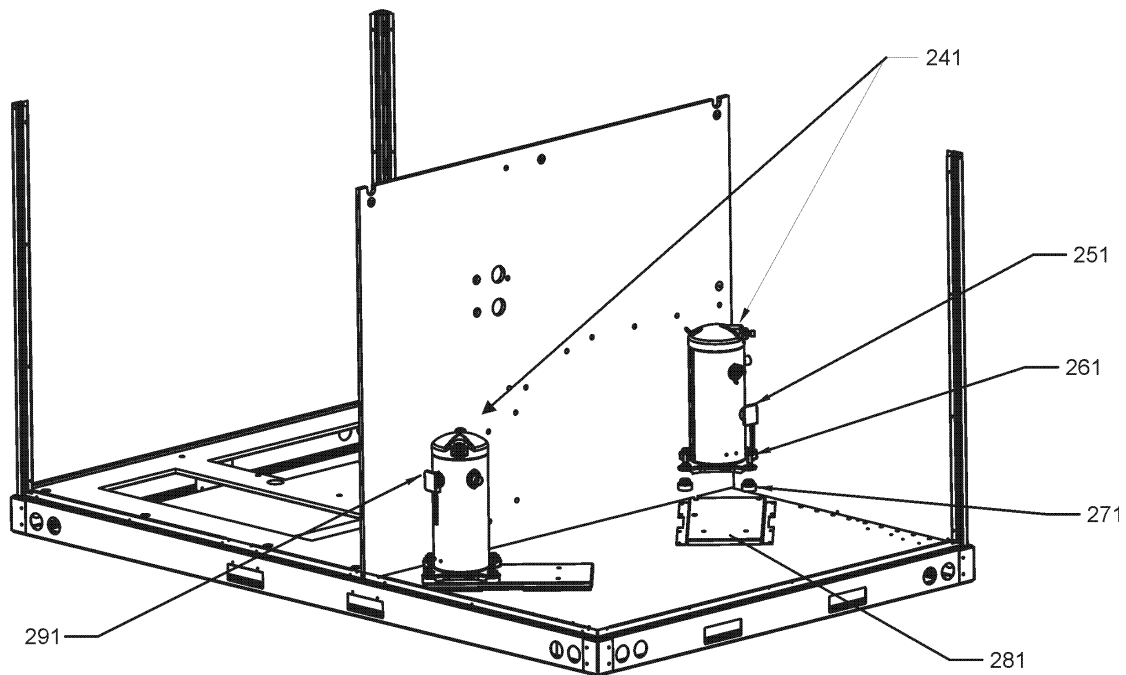
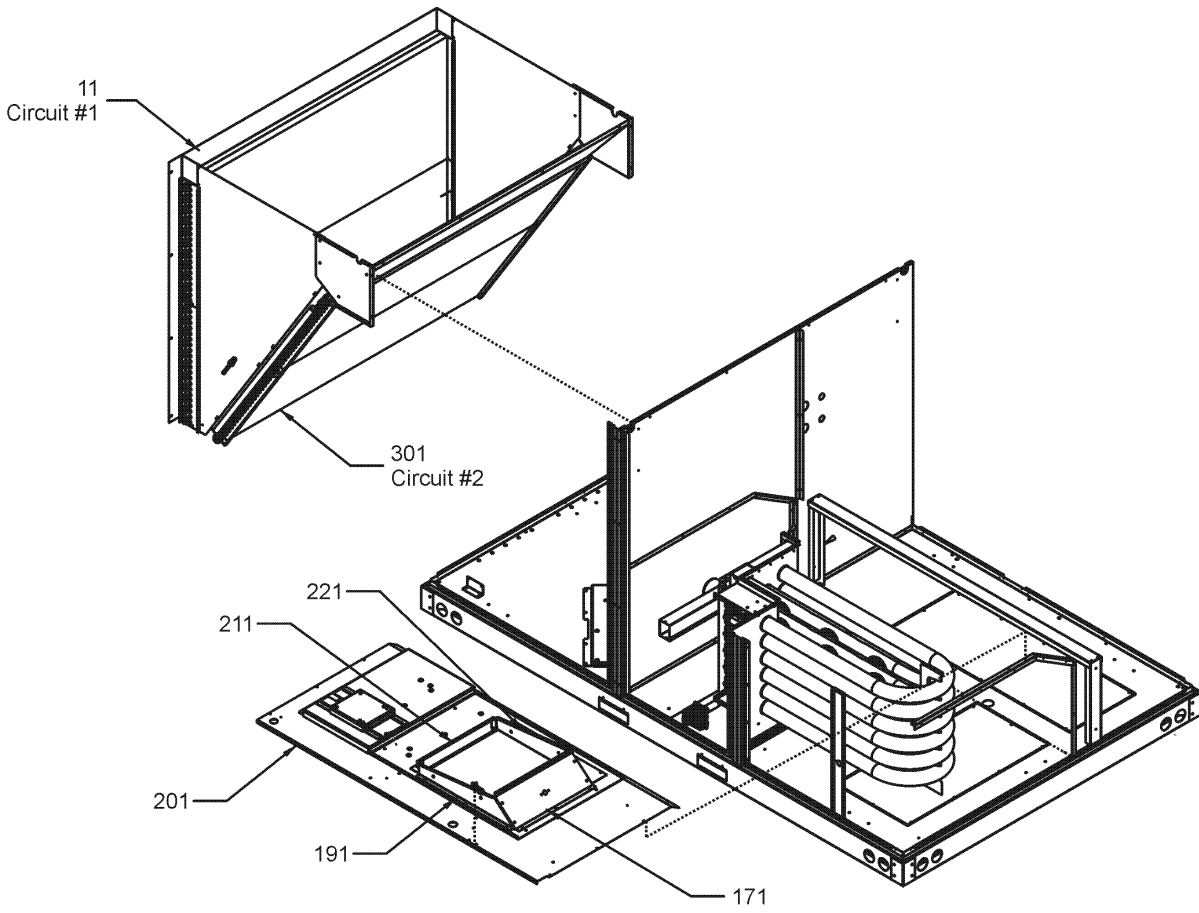
**Image 1:**

21	0121L00519	FILTER ANGLE-VERTICAL (RETURN SIDE)
31	0121L00517	BLOCKOFF-EVAPORATOR, RET END
41	0121L00845	EVAP EXTENSION-HAIRPIN SIDE
51	0121L00399	FILTER ANGLE-HORIZONTAL (QTY 2)
61	0121L01258	ANGLE-FILTER HORIZONTAL
71	0121L00520	FILTER ANGLE-VERTICAL (HAIRPIN SIDE)
81	0202L00079	TUBING ASSY, EVAP COIL
111	0121L00372	DRAIN PAN SUPPORT
141	0161L00002	DRAIN PAN
151	0121L00374	DECK SIDE CHANNEL
161	0121L00522	HEAT EXCHANGER BLOCK-OFF
NS	B1369611	AIR FILTER 20 X 25 X 2 (QTY 4)

**Expanded Model Nomenclature**

- M1 - DCG1502103BASOAA
- M2 - DCG1502103BAXGAA
- M3 - DCG1502103BAXXAA
- M4 - DCG1502103BAXYAA
- M5 - DCG1502103BHAXAA
- M6 - DCG1502103BHXDAA
- M7 - DCG1502103BHXXAA
- M8 - DCG1502103BJXAAA
- M9 - DCG1502103BJXFAA
- M10 - DCG1502103BJXZAA
- M11 - DCG1502103BXSXAA
- M12 - DCG1502103BXXCAA
- M13 - DCG1502103BXXEAA
- M14 - DCG1502103BXXNAA
- M15 - DCG1502103BXXXAA
- M16 - DCG1502104BHXAAB
- M17 - DCG1502104BHXBAB
- M18 - DCG1502104BHXXAB
- M19 - DCG1502104BJSAAAB
- M20 - DCG1502104BJSFAB
- M21 - DCG1502104BJXAAB
- M22 - DCG1502104BJXGAA
- M23 - DCG1502104BXSXAB
- M24 - DCG1502104BXXCAB
- M25 - DCG1502104BXXXAA
- M26 - DCG1502104BXXXAB
- M27 - DCG1502107BAXXAB
- M28 - DCG1502107BXSXAA
- M29 - DCG1502107BXXXAA
- M30 - DCG1502107BXXXAB

# Condenser / Partition Assembly



# Condenser / Partition Assembly

Ref. Part  
No: No:

Description:

Ref. Part  
No: No:

Description:

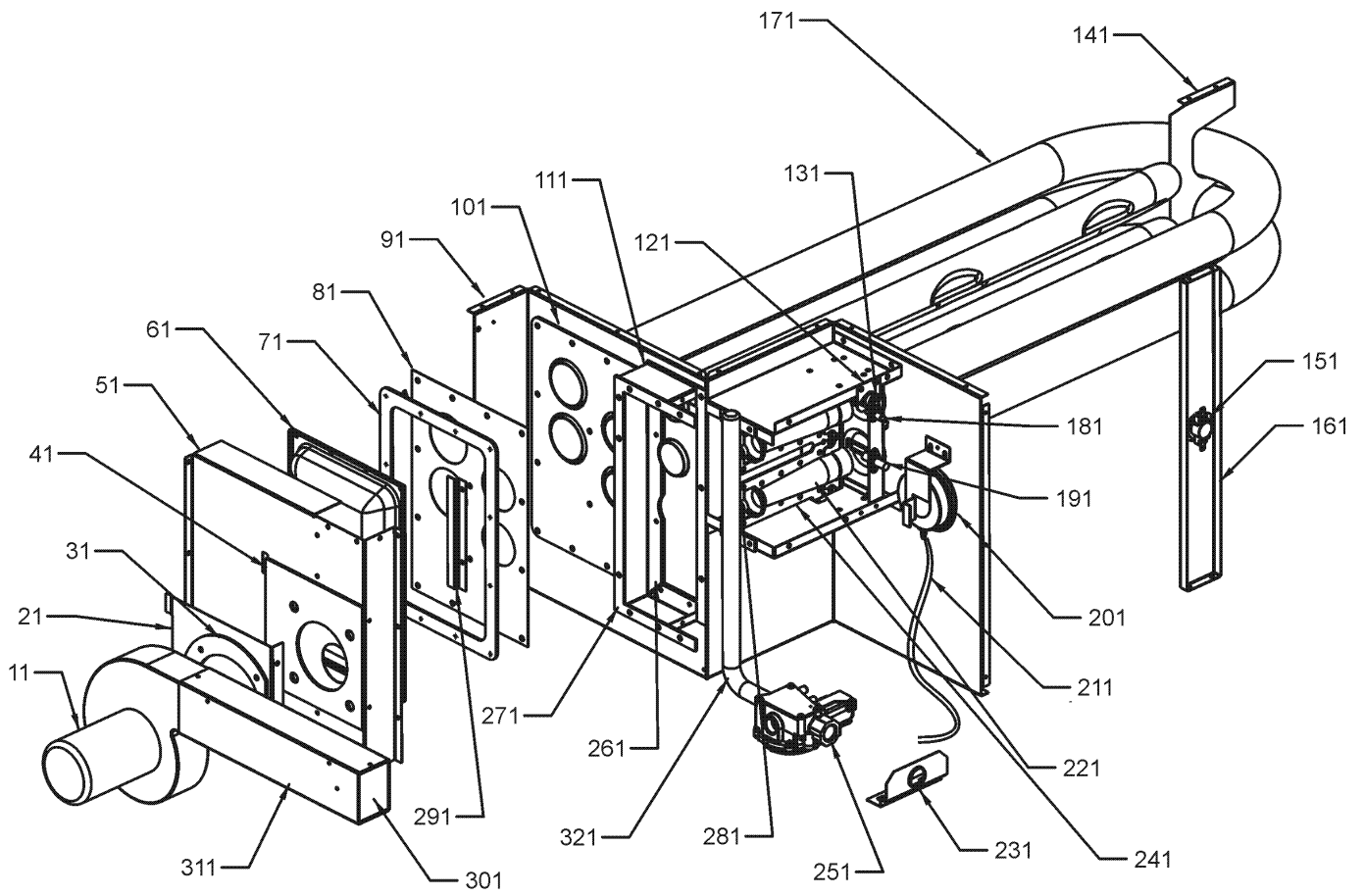
**Image 1:**

11	0201L00197	COND COIL ASSY, 5MM
171	0121L00168	BLOWER TRANSITION, RH END
191	0121L00092	BLOWER TRANSITION, FRONT
201	0121L01204	BLOWER DECK
211	0121L00169	BLOWER TRANSITION, LH END
221	0121L00094	BLOWER TRANSITION, BACK
241	ZP67KCETFD130	COMPRESSOR 67000, 460/60/3 (M16, M17, M18, M19, M20, M21, M22, M23, M24, M25, M26)
241	ZP67KCETF5130	COMPRESSOR 67500, 200/230/60/3 (M1, M2, M3, M4, M5, M6, M7, M8, M9, M10, M11, M12, M13, M14, M15)
241	ZP67KCETFE130	COMPRESSOR 67500, 575/60/3 (M27, M28, M29, M30)
251	0159L00004	COMPRESSOR SCROLL HARNESS (M16, M17, M18, M19, M20, M21, M22, M23, M24, M25, M26, M27, M28, M29, M30)
251	0159L00009	COMPRESSOR SCROLL HARNESS (M1, M2, M3, M4, M5, M6, M7, M8, M9, M10, M11, M12, M13, M14, M15)
261	M0221641	TF SHOULDER SCREW (QTY 8)
271	B1339533	COMPRESSOR GROMMET (QTY 8)
281	0121L00408	COMPRESSOR MOUNTING PLATE (QTY 2)
291	0159L00033	COMPRESSOR SCROLL HARNESS (M1, M2, M3, M4, M5, M6, M7, M8, M9, M10, M11, M12, M13, M14, M15)
291	0159L00035	COMPRESSOR SCROLL HARNESS (M16, M17, M18, M19, M20, M21, M22, M23, M24, M25, M26, M27, M28, M29, M30)
301	0201L00198	COND COIL ASSY, 5MM C2

**Expanded Model Nomenclature**

M1 - DCG1502103BASOAA
M2 - DCG1502103BAXGAA
M3 - DCG1502103BAXXAA
M4 - DCG1502103BAXYAA
M5 - DCG1502103BHXAAA
M6 - DCG1502103BHXDAA
M7 - DCG1502103BHXXAA
M8 - DCG1502103BJXAAA
M9 - DCG1502103BJXFAA
M10 - DCG1502103BJXZAA
M11 - DCG1502103BXSXAA
M12 - DCG1502103BXXCAA
M13 - DCG1502103BXXEAA
M14 - DCG1502103BXXNAA
M15 - DCG1502103BXXXAA
M16 - DCG1502104BHXAAB
M17 - DCG1502104BHXBAB
M18 - DCG1502104BHXXAB
M19 - DCG1502104BJSAAAB
M20 - DCG1502104BJSFAB
M21 - DCG1502104BJXAAB
M22 - DCG1502104BJXGAA
M23 - DCG1502104BXSXAB
M24 - DCG1502104BXXCAB
M25 - DCG1502104BXXXAA
M26 - DCG1502104BXXXAB
M27 - DCG1502107BAXXAB
M28 - DCG1502107BXSXAA
M29 - DCG1502107BXXXAA
M30 - DCG1502107BXXXAB

# Heat Exchanger Assembly



# Heat Exchanger Assembly

**Ref. Part  
No: No:**

**Description:**

**Ref. Part  
No: No:**

**Description:**

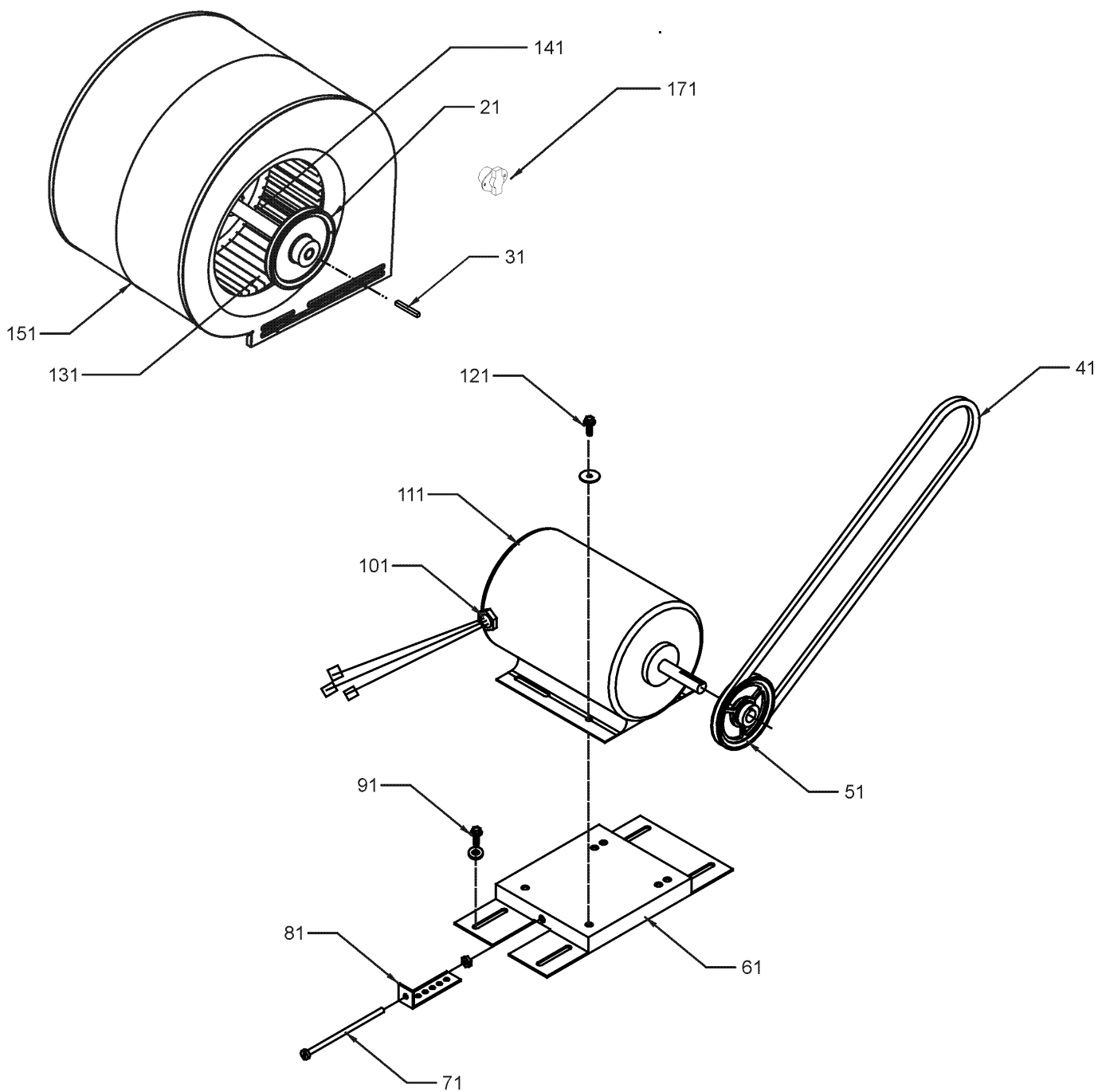
**Image 1:**

11	0131L00002	VENT MOTOR
21	0121L00080	MOUNTING PLATE-ID BLOWER
31	0154L00007	GASKET, BLOWER/ORIFICE PLATE
41	0154L00006	GASKET, COLLECTOR/ORIFICE PLATE
51	0121L00077	COLLECTOR BOX COVER
61	0121L00072	REAR COVER, HEAT EXCHANGER
71	0154L00010	REAR COVER GASKET, HEAT EXCHANGER
81	0121L00133	TUBE PLATE, HEAT EXCHANGER
91	0121L01196	PANEL-HT TUBES, 6 BURNER
101	0154L00015	TUBE PLATE GASKET, HEAT EXCHANGER
111	0121L00076	COLLECTOR BOX CHANNEL
121	0121L00323	FLAME ROLLOUT BRACKET
131	10123532	MANUAL RESET LIMIT 350°F
141	0121L01065	SUPPORT-HT TUBES 6
151	B1370187	PRIMARY LIMIT SWITCH 160°F
161	0121L00093	POST-LIMIT SWITCH
171	0270L00043	HEAT EXCHANGER ASSY 6B (M2, M3, M4, M5, M6, M7, M8, M9, M10, M12, M13, M14, M15, M16, M17, M18, M21, M22, M24, M25, M26, M27, M29, M30)
171	0270L00171	HEAT EXCHANGER ASSY 6B (M1, M11, M19, M20, M23, M28)
181	0130F00010	FLAME SENSOR
191	20261709	IGNITOR
201	11112501	PRESSURE SWITCH
211	A3468601	PRESSURE SWITCH HOSE
221	0163L00000	BECKETT BURNER (QTY 6)
231	0121L00147	PIPE BRACKET-GAS VALVE
241	0121G00268	BRACKET-BURNER TOP/BOT (QTY 2)
251	0151L00000	GAS VALVE (36H)
261	0154L00011	INNER GASKET, COLLECTOR BOX
271	0154L00012	OUTER GASKET, COLLECTOR BOX
281	0163L00007	ORIFICE #34 DRILL (QTY 6)
291	0121L00073	TUBE RESTRICTOR
301	0163L00006	FLUE SCREEN
311	0121L00049	HEAT EXCHANGER FLUE (QTY 2)
321	0163L00010	MANIFOLD - 6 BRNR
NS	0121L00130NG	FLUE COLLAR
NS	B1392609	SEAL STRIP, RED, 1/8 X 1/2 X 100 (QTY 3)

**Expanded Model Nomenclature**

M1 - DCG1502103BASOAA
M2 - DCG1502103BAXGAA
M3 - DCG1502103BAXXAA
M4 - DCG1502103BAXYAA
M5 - DCG1502103BHXAAA
M6 - DCG1502103BHXDAA
M7 - DCG1502103BHXXAA
M8 - DCG1502103BJXAAA
M9 - DCG1502103BJXFAA
M10 - DCG1502103BJXZAA
M11 - DCG1502103BXSXAA
M12 - DCG1502103BXXCAA
M13 - DCG1502103BXXEAA
M14 - DCG1502103BXXNAA
M15 - DCG1502103BXXXAA
M16 - DCG1502104BHXAAB
M17 - DCG1502104BHXBAB
M18 - DCG1502104BHXXAB
M19 - DCG1502104BJSAA
M20 - DCG1502104BJSFAB
M21 - DCG1502104BJXAAB
M22 - DCG1502104BJXGAA
M23 - DCG1502104BXSXAB
M24 - DCG1502104BXXCAB
M25 - DCG1502104BXXXAA
M26 - DCG1502104BXXXAB
M27 - DCG1502107BAXXAB
M28 - DCG1502107BXSXAA
M29 - DCG1502107BXXXAA
M30 - DCG1502107BXXXAB

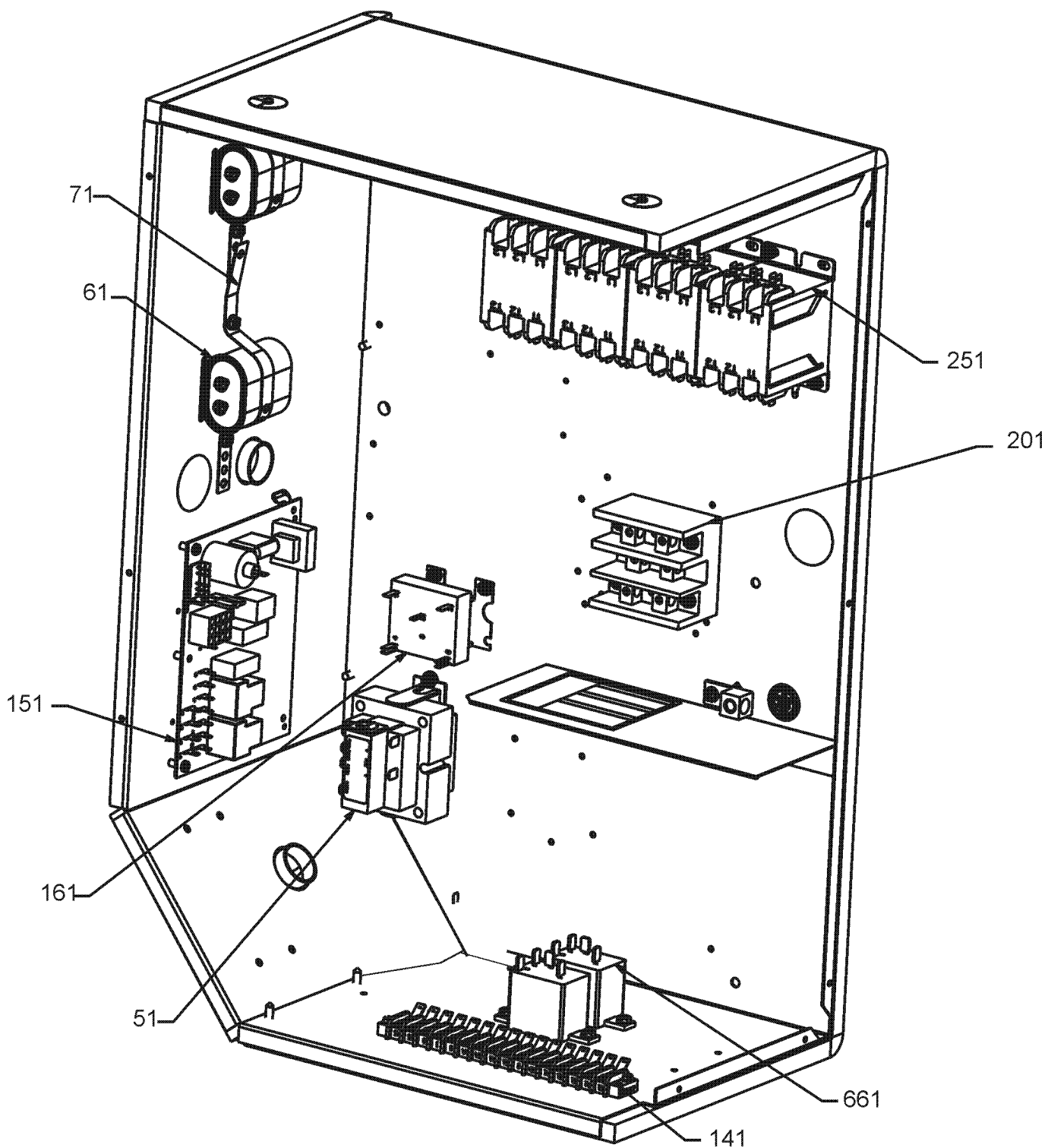
# Belt Drive Blower / Motor Assembly



# Belt Drive Blower / Motor Assembly

Ref. Part No: No:	Description:	Ref. Part No: No:	Description:
<b>Image 1:</b>		<b>Expanded Model Nomenclature</b>	
21	B3204310	FIXED SHEAVE AK66	M1 - DCG1502103BASOAA
31	B1398604	STEEL KEY (000158812) 2.0"	M2 - DCG1502103BAXGAA
41	0164L00001	NOTCHED FAN BELT AX49	M3 - DCG1502103BAXXAA
51	0163L00012	VARIABLE PITCH SHEAVE VL40	M4 - DCG1502103BAXYAA
61	0270L00015	MOTOR BASE ASSY	M5 - DCG1502103BHXAAA
71	0163M00045	BOLT 1/4-20 X 4"	M6 - DCG1502103BHXDAA
81	3225000F	BELT TIGHTENER ANGLE	M7 - DCG1502103BHXXAA
91	B1446707	SCREW 5/16-18 X 1" (QTY 4)	M8 - DCG1502103BJXAAA
101	B1393726	ELECT. CONNECTING BUSHING	M9 - DCG1502103BJXFAA
111	B3240004	BELT DRIVE MOTOR 2 HP (M1, M2, M3, M4, M5, M6, M7, M8, M9, M10, M11, M12, M13, M14, M15, M16, M17, M18, M19, M20, M21, M22, M23, M24, M25, M26)	M10 - DCG1502103BJXZAA
111	0131L00006	BELT DRIVE MOTOR 3 HP 575 V (M27, M28, M29, M30)	M11 - DCG1502103BXSXAA
121	B1393738	BOLT 1/4-20 X 3/4" (QTY 4)	M12 - DCG1502103BXXCAA
131	03-78497	BLOWER WHEEL	M13 - DCG1502103BXXEAA
141	04-11526	BLOWER SHAFT	M14 - DCG1502103BXXNAA
151	04-01526	BLOWER HOUSING	M15 - DCG1502103BXXXAA
171	0130F00036	PRIMARY LIMIT - PINK	M16 - DCG1502104BHXAAB
NS	0259L00008	MOTOR HARNESS-BELT DRIVE	M17 - DCG1502104BHXBAB
			M18 - DCG1502104BHXXAB
			M19 - DCG1502104BJSAAAB
			M20 - DCG1502104BJSFAB
			M21 - DCG1502104BJXAAB
			M22 - DCG1502104BJXGAA
			M23 - DCG1502104BXSXAB
			M24 - DCG1502104BXXCAB
			M25 - DCG1502104BXXXAA
			M26 - DCG1502104BXXXAB
			M27 - DCG1502107BAXXAB
			M28 - DCG1502107BXSXAA
			M29 - DCG1502107BXXXAA
			M30 - DCG1502107BXXXAB

# Control Box Assembly



# Control Box Assembly

Ref. Part No:	Description:	Ref. Part No:	Description:
<b>Image 1:</b>		<b>Expanded Model Nomenclature</b>	
51	0130M00144 TRANSFORMER (M1, M2, M3, M4, M5, M6, M7, M8, M9, M10, M11, M12, M13, M14, M15)	M1	- DCG1502103BASOAA
51	0130M00145 TRANSFORMER 480V to 24V, 75VA (M16, M17, M18, M19, M20, M21, M22, M23, M24, M25, M26)	M2	- DCG1502103BAXGAA
51	0130M00148 TRANSFORMER 575V to 24V, 75VA (M27, M28, M29, M30)	M3	- DCG1502103BAXXAA
61	CAP100000370LA CAPACITOR 10/370V (M1, M2, M3, M4, M5, M6, M7, M8, M9, M10, M11, M12, M13, M14, M15, M16, M17, M18, M19, M20, M21, M23, M24, M26)	M4	- DCG1502103BAXYAA
61	CAP050000370LA CAPACITOR 5/370V (M22, M25, M28, M29)	M5	- DCG1502103BHXAAA
61	CAP050000440LA CAPACITOR 5/440V (M27, M30)	M6	- DCG1502103BHXDAA
71	20520901 CAPACITOR STRAP (QTY 2)	M7	- DCG1502103BHXXAA
141	0130M00038 TERMINAL BOARD	M8	- DCG1502103BJXAAA
151	PCBAG123 IGNITION BOARD, DSI INTEGRATED	M9	- DCG1502103BJXFAA
161	0130M00025 24V RELAY	M10	- DCG1502103BJXZAA
201	16330-3 POWER BLOCK	M11	- DCG1502103BXSXAA
251	CONT3P030024V CONTACTOR 30 AMP, 3P, 24V (QTY 3)	M12	- DCG1502103BXXCAA
661	0130M00242 RELAY, 24V (QTY 2)	M13	- DCG1502103BXXEAA
NS	0259L00092 HARNESS-SMOKE DETECTOR SENSOR (M13)	M14	- DCG1502103BXXNAA
NS	0259L00146 POWER HARNESS	M15	- DCG1502103BXXXAA
NS	0130M00146 TRANSFORMER 480V TO 230V, 150VA (M16, M17, M18, M19, M20, M21, M22, M23, M24, M25, M26)	M16	- DCG1502104BHXAAB
NS	0130M00147 TRANSFORMER 575V TO 230V, 150VA (M27, M28, M29, M30)	M17	- DCG1502104BHXBAB
NS	0259L00148 WIRE HARNESS ASSY	M18	- DCG1502104BHXXAB
NS	0259L00149 WIRE HARNESS ASSY	M19	- DCG1502104BJSAA
NS	0259L00168 WIRE HARNESS, ECONOMIZER	M20	- DCG1502104BJSFAB
		M21	- DCG1502104BJXAAB
		M22	- DCG1502104BJXGAA
		M23	- DCG1502104BXSXAB
		M24	- DCG1502104BXXCAB
		M25	- DCG1502104BXXXAA
		M26	- DCG1502104BXXXAB
		M27	- DCG1502107BAXXAB
		M28	- DCG1502107BXSXAA
		M29	- DCG1502107BXXXAA
		M30	- DCG1502107BXXXAB

# ACCESSORY PARTS LIST

# Accessory Parts List

Ref. Part No: No:	Description:	Ref. Part No: No:	Description:
<b>Image 1:</b>		<b>Expanded Model Nomenclature</b>	
NS 0121L00971	BRACKET, DISCONNECT SW (100A) (M5, M6, M7, M8, M9, M10, M16, M17, M18, M19, M20, M21, M22)	M1 - DCG1502103BASOAA	
NS 0121L00316	BRACKET-CONV OUTLET MOUNT (M1, M2, M5, M8, M9, M14, M16, M17, M19, M20, M21, M22)	M2 - DCG1502103BAXGAA	
NS 0121L00768	BRACKET-SMOKE DETECTOR (M13)	M3 - DCG1502103BAXXAA	
NS 0130M00065	CIRCUIT BREAKER, CONVENIENCE OUTLET (M1, M14, M17)	M4 - DCG1502103BAXYAA	
NS 0270L00582	DISCONNECT COVER ASSY (M22)	M5 - DCG1502103BHXAAA	
NS 0130L00012	GANG BOX-GFCI OUTLET (M1, M2, M5, M8, M9, M14, M16, M17, M19, M20, M21, M22)	M6 - DCG1502103BHXDAA	
NS 0130L00039	HANDLE, ROTARY (M5, M6, M7, M8, M9, M10, M16, M17, M18, M19, M20, M21, M22)	M7 - DCG1502103BHXXAA	
NS LAKT03	LOW AMBIENT KIT (M4, M9, M12, M20, M24)	M8 - DCG1502103BJXAAA	
NS 0130L00103	RECEPTACLE-GFCI OUTLET (M1, M2, M5, M8, M9, M14, M16, M17, M19, M20, M21, M22)	M9 - DCG1502103BJXFAA	
NS 0130L00056	SHAFT, CUT (M5, M6, M7, M8, M9, M10)	M10 - DCG1502103BJXZAA	
NS 0130L00057	SHAFT, CUT (M16, M17, M18, M19, M20, M21, M22)	M11 - DCG1502103BXSXAA	
NS D4120	SMOKE DETECTOR, PHOTO 4WIRE (M1, M2, M4, M6, M10, M13, M14, M22)	M12 - DCG1502103BXXCAA	
NS D4S	SMOKE DETECTOR, SENSOR ONLY (M1, M4, M10)	M13 - DCG1502103BXXEAA	
NS 0130L00027	SWITCH-DISCONNECT 100A (M5, M6, M7, M8, M9, M10)	M14 - DCG1502103BXXNAA	
NS 0130L00046	SWITCH-DISCONNECT 60A (M16, M17, M18, M19, M20, M21, M22)	M15 - DCG1502103BXXXAA	
NS 0130M00061	TRANSFORMER, CONVENIENCE OUTLET (M1, M14, M17)	M16 - DCG1502104BHXAAB	
NS 0259L00090	WIRE HARNESS-SMOKE DETECTOR (M13)	M17 - DCG1502104BHXBAB	
		M18 - DCG1502104BHXXAB	
		M19 - DCG1502104BJSAAAB	
		M20 - DCG1502104BJSFAB	
		M21 - DCG1502104BJXAAB	
		M22 - DCG1502104BJXGAA	
		M23 - DCG1502104BXSXAB	
		M24 - DCG1502104BXXCAB	
		M25 - DCG1502104BXXXAA	
		M26 - DCG1502104BXXXAB	
		M27 - DCG1502107BAXXAB	
		M28 - DCG1502107BXSXAA	
		M29 - DCG1502107BXXXAA	
		M30 - DCG1502107BXXXAB	