

## Commercial 12.5 Ton Package Gas Unit

DCG1502103BFXDAA  
DCG1502103BHDDAA  
DCG1502103BHXBAA  
DCG1502103BXJXAA  
DCG1502103BXXXAB  
DCG1502104BHDGAB  
DCG1502104BHDHAB  
DCG1502104BHXPAB  
DCG1502104BVDBAB  
DCG1502104BXXAAB  
DCG1502104BXXXAC  
DCG1502107BXDXAB



This manual is to be used by qualified technicians only.

This manual replaces RP-D1108C.

© 2017 - 2018 **DAIKIN COMPANY, L.P.** ♦ 5151 San Felipe St., Suite 500 ♦ Houston, TX 77056 -

# Important Information

---

## Index

Functional Parts List .....	3
Illustration and Parts .....	4 - 17

*Views shown are for parts illustrations only, not servicing procedures*

### Text Codes:

AR - As Required

NA - Not Available

NS - Not Shown

00000000 - See Note

QTY - Quantity Example (QTY 3) (If Quantity not shown, Quantity = 1)

M - Model Example (M1) (If M Code not shown, then part is used on all Models)

### Expanded Model Nomenclature:

Example M1 - Model#1 M2 - Model#2 M3 - Model#3
---

Daikin Company, L.P. is not responsible for personal injury or property damage resulting from improper service. Review all service information before beginning repairs.

Warranty service must be performed by an authorized technician, using authorized factory parts. If service is required after the warranty expires, Daikin Company, L.P. also recommends contacting an authorized technician and using authorized factory parts.

Daikin Company, L.P. reserves the right to discontinue, or change at any time, specifications or designs without notice or without incurring obligations.

For assistance within the U.S.A. contact:

Equipment Support  
Daikin North America, LLC  
19001 Kermier Road  
Waller, Texas 77484  
855-770-5678-Telephone  
713-863-2382-Facsimile

For assistance outside the U.S.A. contact:

International Division  
Daikin North America, LLC  
19001 Kermier Road  
Waller, Texas 77484  
713-861-2500-Telephone  
713-863-2382-Facsimile

# Functional Parts

## Part

### No: Description:

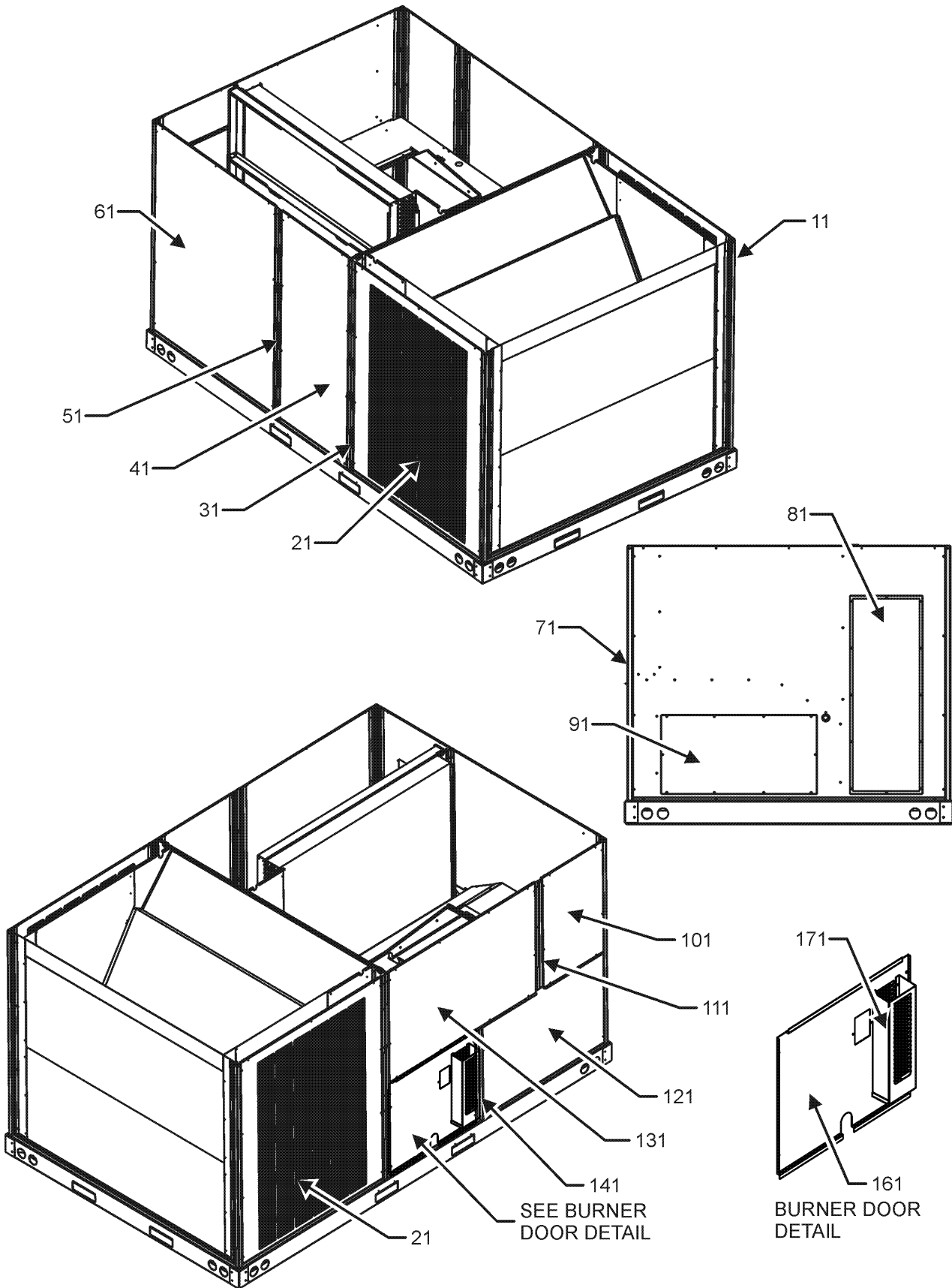
---

0130M00025	24V RELAY (M1)
B3240004	BELT DRIVE MOTOR 2 HP (M1, M2, M3, M4, M5, M6, M7, M8, M9, M10, M11)
0131L00006	BELT DRIVE MOTOR 3 HP 575 V (M12)
03-78497	BLOWER WHEEL
CAP100000370LA	CAPACITOR 10/370V (M1)
CAP050000440LA	CAPACITOR 5/440V (M12)
ZP67KCETFD130	COMPRESSOR 67000, 460/60/3 (M6, M7, M8, M9, M10, M11)
ZP67KCETF5130	COMPRESSOR 67500, 200/230/60/3 (M1, M2, M3, M4, M5)
ZP67KCETFE130	COMPRESSOR 67500, 575/60/3 (M12)
0131M00430	COND MOTOR 1/3 HP, 1 SP, 6 PL (M1, M2, M3, M4, M5)
0131M00500	COND MOTOR 1/3 HP, OD, LAK (M12)
CONT3P030024V	CONTACTOR 30 AMP, 3P, 24V (M1)
10625733	FAN BLADE 22" ALUM CCW (QTY 2)
0130F00010	FLAME SENSOR
0151L00000	GAS VALVE (36H)
0130M00074	HIGH PRESSURE SWITCH (QTY 2)
PCBAG123	IGNITION BOARD, DSI INTEGRATED
20261709	IGNITOR
0130M00075	LOW PRESSURE SWITCH (QTY 2)
10123532	MANUAL RESET LIMIT 350°F
0131M00774	MOTOR, 1/3 HP, OD (M6, M7, M8, M9, M10, M11)
0164L00001	NOTCHED FAN BELT AX49
16330-3	POWER BLOCK
11112501	PRESSURE SWITCH
0130F00036	PRIMARY LIMIT - PINK
B1370187	PRIMARY LIMIT SWITCH 160°F
0130M00038	TERMINAL BOARD (M2, M3, M4, M5, M6, M7, M8, M9, M10, M11, M12)
0130M00144	TRANSFORMER (M1, M2, M3, M4, M5)
0130M00146	TRANSFORMER 480V TO 230V, 150VA (M6, M7, M8, M9, M10, M11)
0130M00145	TRANSFORMER 480V to 24V, 75VA (M6, M7, M8, M9, M10, M11)
0130M00147	TRANSFORMER 575V TO 230V, 150VA (M12)
0130M00148	TRANSFORMER 575V to 24V, 75VA (M12)
0131L00002	VENT MOTOR

### Expanded Model Nomenclature

M1 - DCG1502103BFXDAA
M2 - DCG1502103BHDDAA
M3 - DCG1502103BHXBAA
M4 - DCG1502103BXJXAA
M5 - DCG1502103BXXXAB
M6 - DCG1502104BHDGAB
M7 - DCG1502104BHDHAB
M8 - DCG1502104BHXPAB
M9 - DCG1502104BVDBAB
M10 - DCG1502104BXXAAB
M11 - DCG1502104BXXXAC
M12 - DCG1502107BXDXAB

# Cabinet Assembly



# Cabinet Assembly

Ref. Part No:	No:	Description:	Ref. Part No:	No:	Description:
<b>Image 1:</b>					
11	0121L00979RFNG	CORNER POST (QTY 4)			
11	0121L01421RFNG	CORNER POST (M2, M6, M7, M9, M12)			
21	0152L00001	GRILLE-CONDENSER (QTY 2)			
31	0121L00980RFNG	ROLL FORM SIDE POST (M1, M3, M4, M5, M8, M10, M11)			
31	0121L01423RFNG	ROLL FORM SIDE POST (M2, M6, M7, M9, M12)			
41	0121L00759NG	FILTER DOOR			
51	0121L01433RFNG	FILTER DOOR POST (M2, M6, M7, M9, M12)			
51	0121L00757RFNG	FILTER POST (M1, M3, M4, M5, M8, M10, M11)			
61	0121L00378NG	ECONOMIZER DOOR (M2, M3, M4, M5, M6, M7, M8, M10, M11, M12)			
71	0121L01287NG	DUCT PANEL (M1, M4, M5, M9, M11, M12)			
71	0121L01367NG	DUCT PANEL (M2, M3, M6, M7, M8)			
71	0121L01368NG	DUCT PANEL (M10)			
81	0121L00082NG	RETURN DUCT COVER			
91	0121L00099NG	SUPPLY DUCT COVER			
101	0121L01078NG	DOOR, CONTROL PAINTED			
111	0121L02305RFNG	RF, PAINTED CONTROL POST 12.5 (M1, M3, M4, M5, M8, M10, M11)			
111	0121L02518RFNG	RF, PNT CNTL POST HINGED 12.5 (M2, M6, M7, M9, M12)			
121	0121L00767NG	ELECTRIC HEAT DOOR			
131	0121L00819NG	BLOWER DOOR			
141	0121L00765RFNG	BURNER BOX POST			
161	0121L00766NG	BURNER DOOR			
171	0121L00129	DOOR RAIN SHIELD			
NS	0121L00727	ECONOMIZER COVER (M9)			
NS	0121L01310	ECONOMIZER COVER (M1)			
NS	0164L00009	GASKET-RUBBER, CPOST (QTY 3)			
NS	0164L00011	GASKET-RUBBER, SIDE POST (QTY 5)			

## Expanded Model Nomenclature

M1 - DCG1502103BFXDAA
M2 - DCG1502103BHDDAA
M3 - DCG1502103BHXBAA
M4 - DCG1502103BXJXAA
M5 - DCG1502103BXXXAB
M6 - DCG1502104BHDGAB
M7 - DCG1502104BHDHAB
M8 - DCG1502104BHXPAB
M9 - DCG1502104BVDBAB
M10 - DCG1502104BXXAAB
M11 - DCG1502104BXXXAC
M12 - DCG1502107BXDXAB

# Top Panel and Tubing Assembly

IMAGE 1

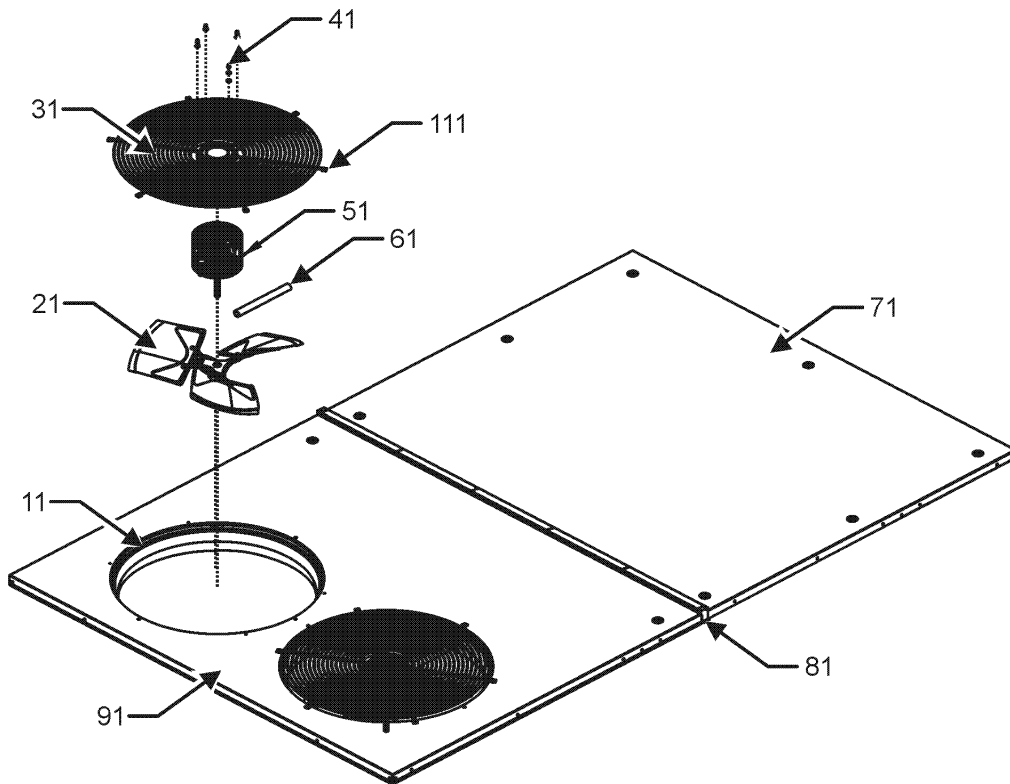
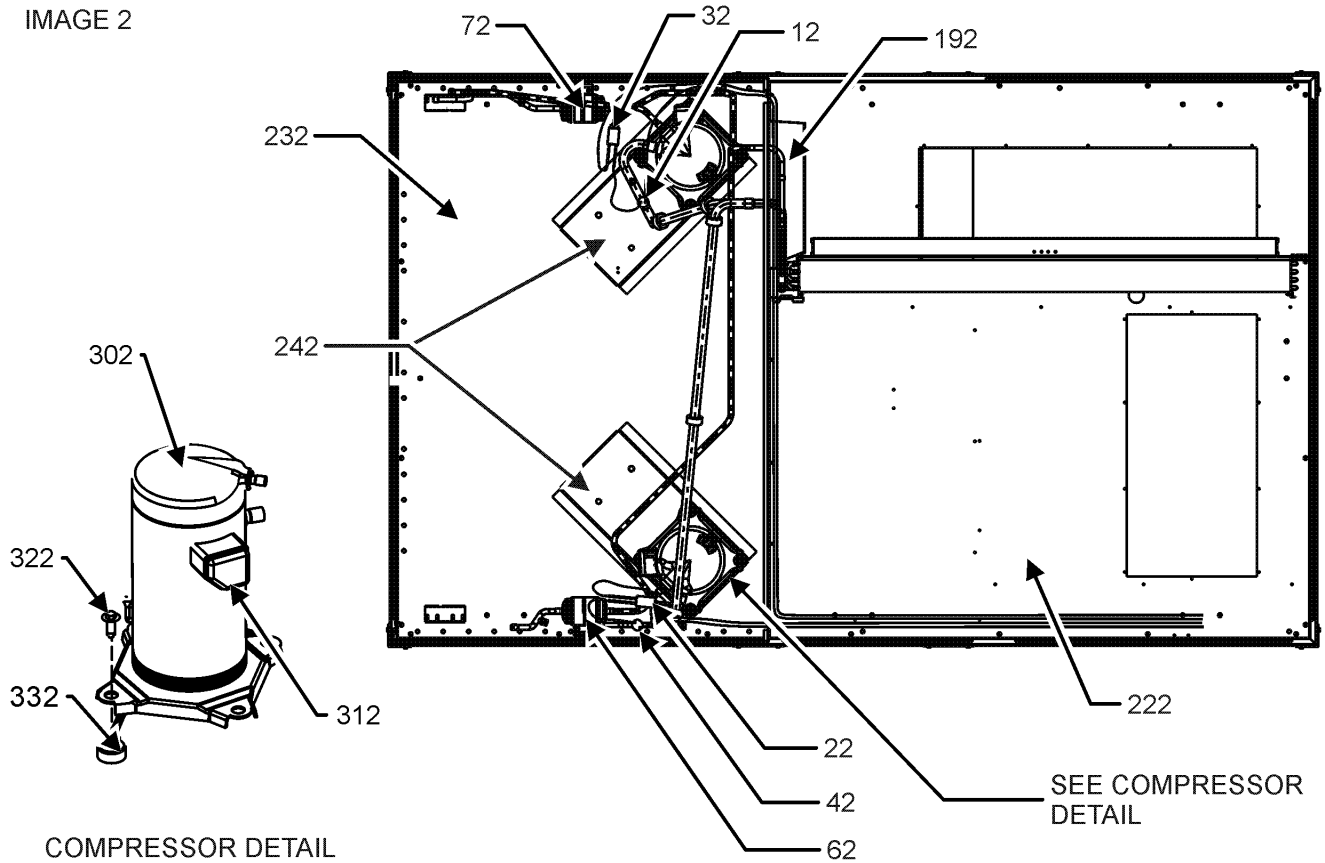


IMAGE 2

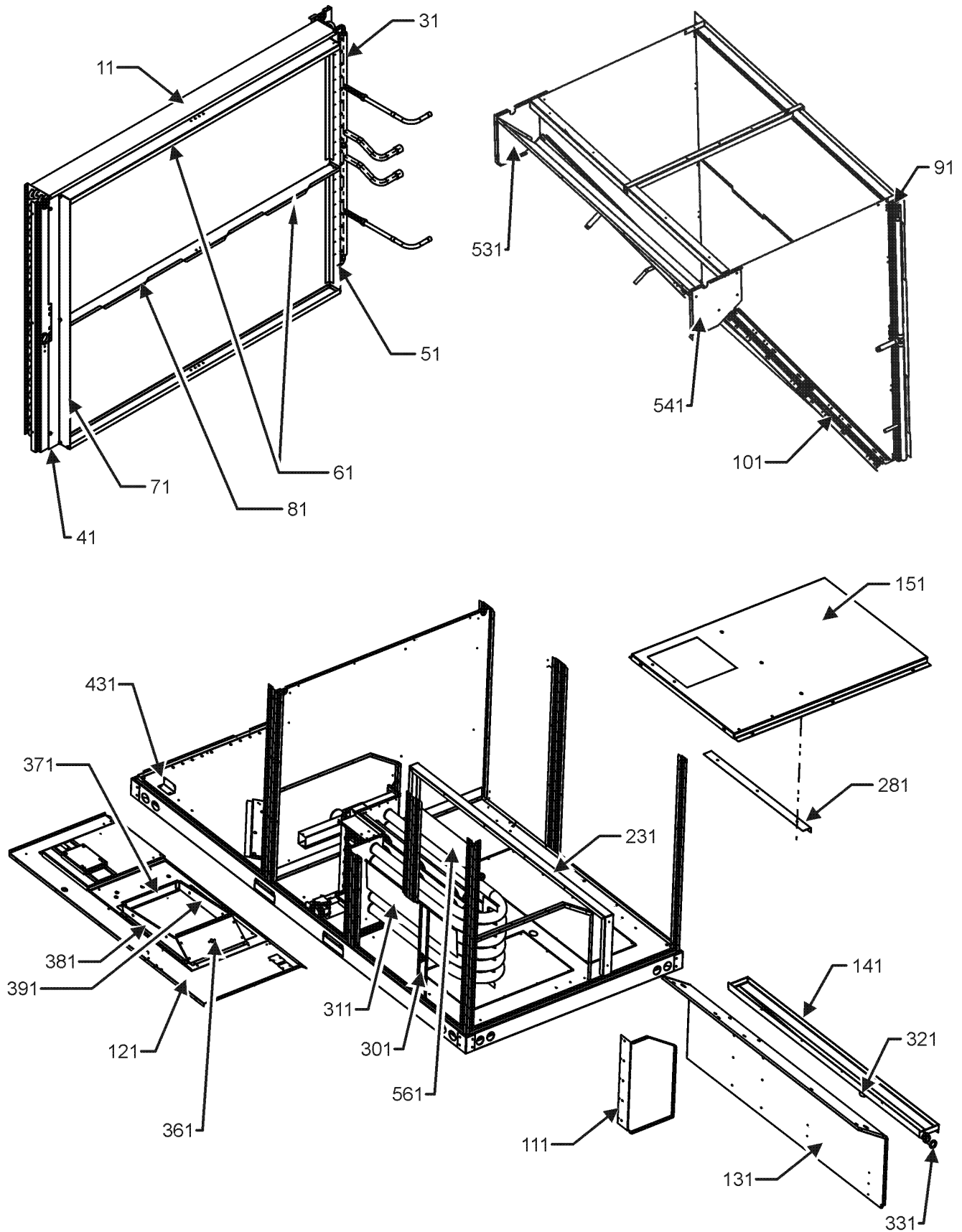


COMPRESSOR DETAIL

# Top Panel and Tubing Assembly

Ref. Part No: No:	Description:	Ref. Part No: No:	Description:
<b>Image 1:</b>		<b>Expanded Model Nomenclature</b>	
11	0161L00000 VENTURI RING 22" (QTY 2)	M1	DCG1502103BFXDAA
21	10625733 FAN BLADE 22" ALUM CCW (QTY 2)	M2	DCG1502103BHDDAA
31	0152G00000 FAN GRILLE, RAISED (QTY 2)	M3	DCG1502103BHXBAA
41	0163M00006P ACORN NUT 5/16 HEX BLACK (QTY 8)	M4	DCG1502103BXJXAA
51	0131M00430 COND MOTOR 1/3 HP, 1 SP, 6 PL (M1, M2, M3, M4, M5)	M5	DCG1502103BXXXAB
51	0131M00500 COND MOTOR 1/3 HP, OD, LAK (M12)	M6	DCG1502104BHDGAB
51	0131M00774 MOTOR, 1/3 HP, OD (M6, M7, M8, M9, M10, M11)	M7	DCG1502104BHDHAB
61	0163M00386 CONDUIT-FLEXIBLE	M8	DCG1502104BHXPAB
71	0121L00497NG TOP INDOOR	M9	DCG1502104BVDBAB
81	20455902 SPLICE GASKET .50 X .25 (QTY 5)	M10	DCG1502104BXXAAB
91	0121L01105NG TOP OUTDOOR	M11	DCG1502104BXXXAC
111	0163M00005P WASHER, BLACK (.50 OD .218ID) (QTY 8)	M12	DCG1502107BXDXAB
NS	0259L00511 HARNESS COND MOTOR		
NS	0259L00512 HARNESS COND MOTOR		
NS	0163M00004 SCREW #10X3/4", BLACK (QTY 20)		
<b>Image 2:</b>			
12	0130M00075 CUT-OUT SWITCH, LOW PRESSURE		
22	0130M00075 LOW PRESSURE SWITCH		
32	0130M00074 HIGH PRESSURE SWITCH		
42	0130M00074 CUT-OUT SWITCH, HIGH PRESSURE		
62	0151M00012 BI-FLOW FILTER DRIER		
72	0151M00012 FILTER/DRIER BI-FLOW		
192	0121L02362 DRIP SHIELD - EVAP		
222	0121L00944 BASE PAN INDOOR		
232	0121L02129 BASE PAN OUTDOOR		
242	0121L02128 MOUNTING PLATE-COMPRESSOR (QTY 2)		
302	ZP67KCETFD130 COMPRESSOR 67000, 460/60/3 (M6, M7, M8, M9, M10, M11)		
302	ZP67KCETF5130 COMPRESSOR 67500, 200/230/60/3 (M1, M2, M3, M4, M5)		
302	ZP67KCETFE130 COMPRESSOR 67500, 575/60/3 (M12)		
312	0159L00066 Harness, comp scroll (M6, M7, M8, M9, M10, M11, M12)		
312	0159L00068 Harness, comp scroll (M1, M2, M3, M4, M5)		
312	0159L00069 Harness, comp scroll (M1, M2, M3, M4, M5)		
312	0159L00070 Harness, compmpressor 460V (M6, M7, M8, M9, M10, M11, M12)		
322	M0221641 TF SHOULDER SCREW (QTY 8)		
332	B1339533 COMPRESSOR GROMMET (QTY 8)		
NS	B1373315 ACCESS FITTING (QTY 4)		
NS	0141L00006X BOARD FORK (QTY 2)		
NS	0121L00055 BRACKET-FORK BOARD (QTY 4)		
NS	0163M00175 CAP WITH O-RING (QTY 4)		
NS	0121G00301 RAIL CORNER BRACKET (QTY 4)		

# Evaporator, Condenser and Partition Assy



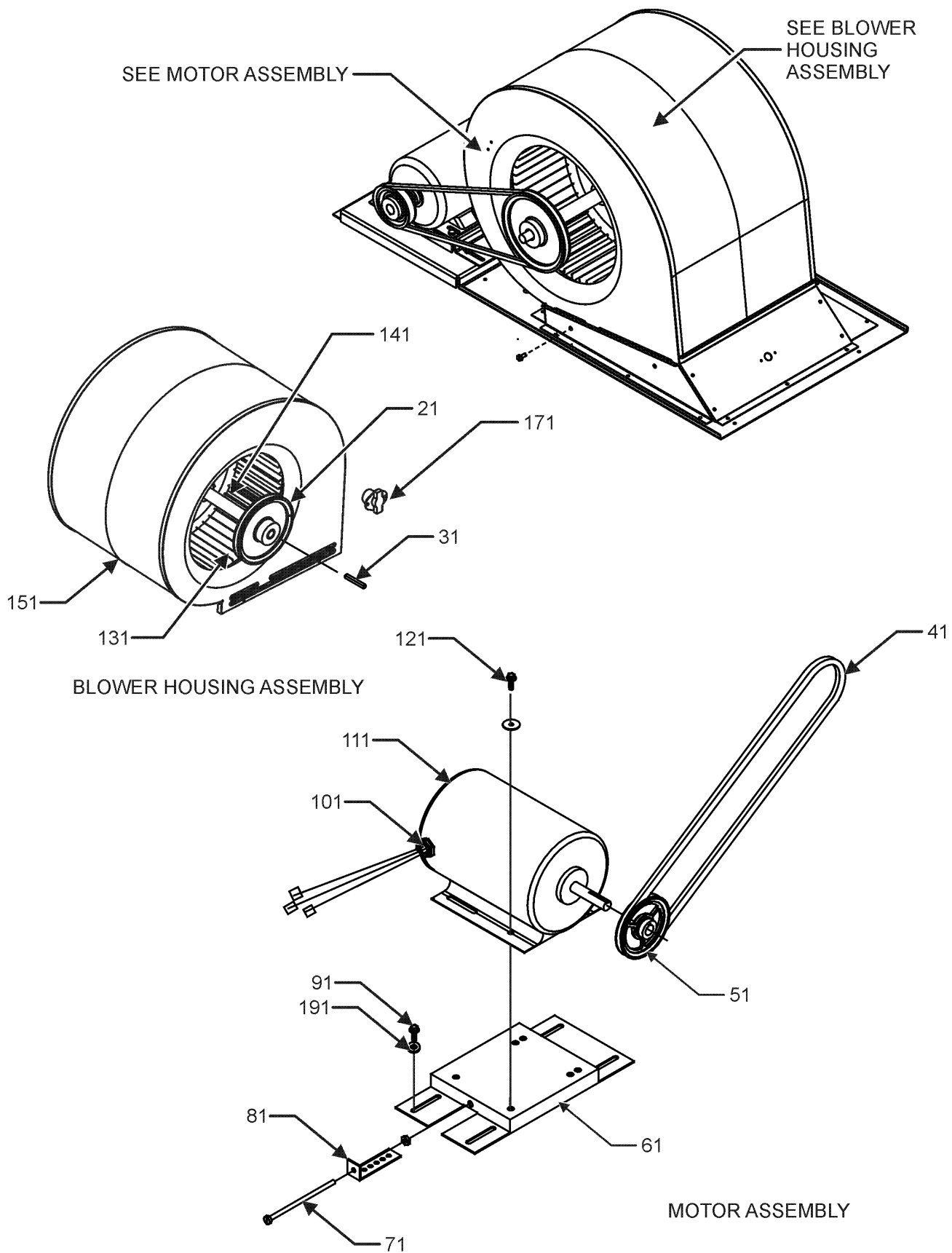
# Evaporator, Condenser and Partition Assy

Ref. Part No: No:	Description:	Ref. Part No: No:	Description:
<b>Image 1:</b>			
11	0202L00079		TUBING ASSY, EVAP COIL
31	0121L00517		BLOCKOFF-EVAPORATOR, RET END
41	0121L00845		EVAP EXTENSION-HAIRPIN SIDE
51	0121L00402		ANGLE-VERTICAL BACK (QTY 2)
61	0121L00399		FILTER ANGLE-HORIZONTAL (QTY 2)
71	0121L02099		ANGLE-FILTER VERTICAL, HPIN
81	0121L01258		ANGLE-FILTER HORIZONTAL
91	0201L00197		COND COIL ASSY, 5MM
101	0201L00198		COND COIL ASSY, 5MM C2
111	0121L00522		HEAT EXCHANGER BLOCK-OFF
121	0121L02500		DECK-BLOWER
131	0121L00374		DECK SIDE CHANNEL
141	0161L00002		DRAIN PAN
151	0121L00366		BASE-HEAT EXCHANGER
231	0121L00372		DRAIN PAN SUPPORT
301	0121L00093		POST-LIMIT SWITCH
311	0121L00136		BAFFLE-BLOWER
321	0163L00071		DRAIN PAN PLUG
331	0154L00009		DRAIN PAN GASKET
361	0121L00168		BLOWER TRANSITION, RH END
371	0121L00169		BLOWER TRANSITION, LH END
381	0121L00092		BLOWER TRANSITION, FRONT
391	0121L00094		BLOWER TRANSITION, BACK
431	0121L00914		BRACE, CONDENSER (QTY 2)
481	0121L00143		ANGLE-HT BASE BRACE
561	0121L01079		BLOCKOFF, CONTROL BOX (M2, M6, M7, M9, M12)
NS	0160L00137		Air Filter 20x25x2 (QTY 4)
NS	0121L01398		DECK, SUPPORT BLOWER (M2, M6, M7, M9, M12)
NS	0121L01402		DECK, SUPPORT CONTROL (M2, M6, M7, M9, M12)
NS	0121L00321		SMOKE DETECTOR COVER (QTY 2)

## Expanded Model Nomenclature

M1 - DCG1502103BFXDAA
M2 - DCG1502103BHDDAA
M3 - DCG1502103BHXBAA
M4 - DCG1502103BXJXAA
M5 - DCG1502103BXXXAB
M6 - DCG1502104BHDGAB
M7 - DCG1502104BHDHAB
M8 - DCG1502104BHXPAB
M9 - DCG1502104BVDBAB
M10 - DCG1502104BXXAAB
M11 - DCG1502104BXXXAC
M12 - DCG1502107BXDXAB

# Blower and Compressor Assembly



# Blower and Compressor Assembly

Ref. Part No: No:	Description:	Ref. Part No: No:	Description:
-------------------	--------------	-------------------	--------------

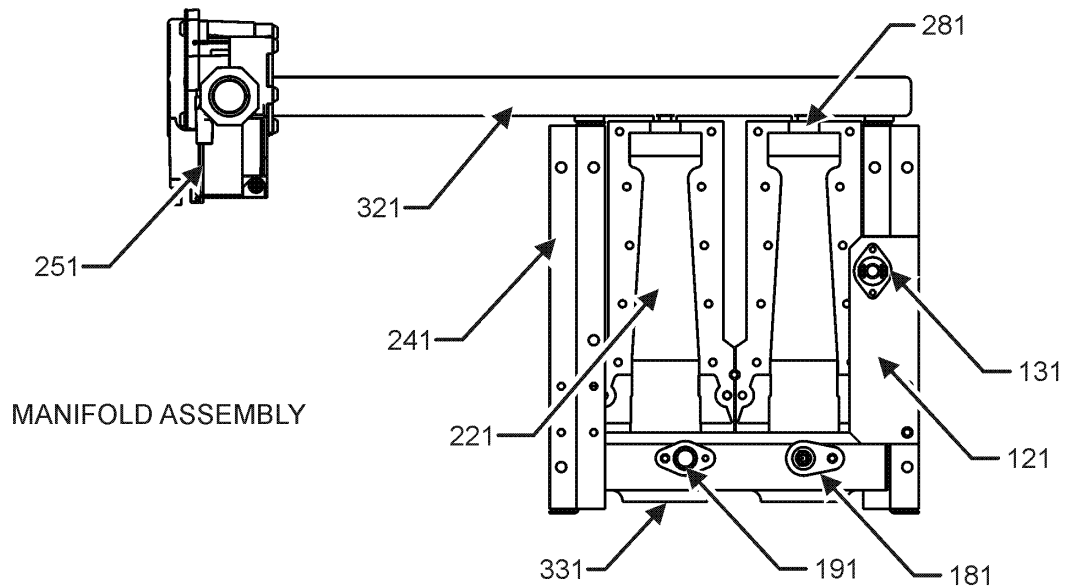
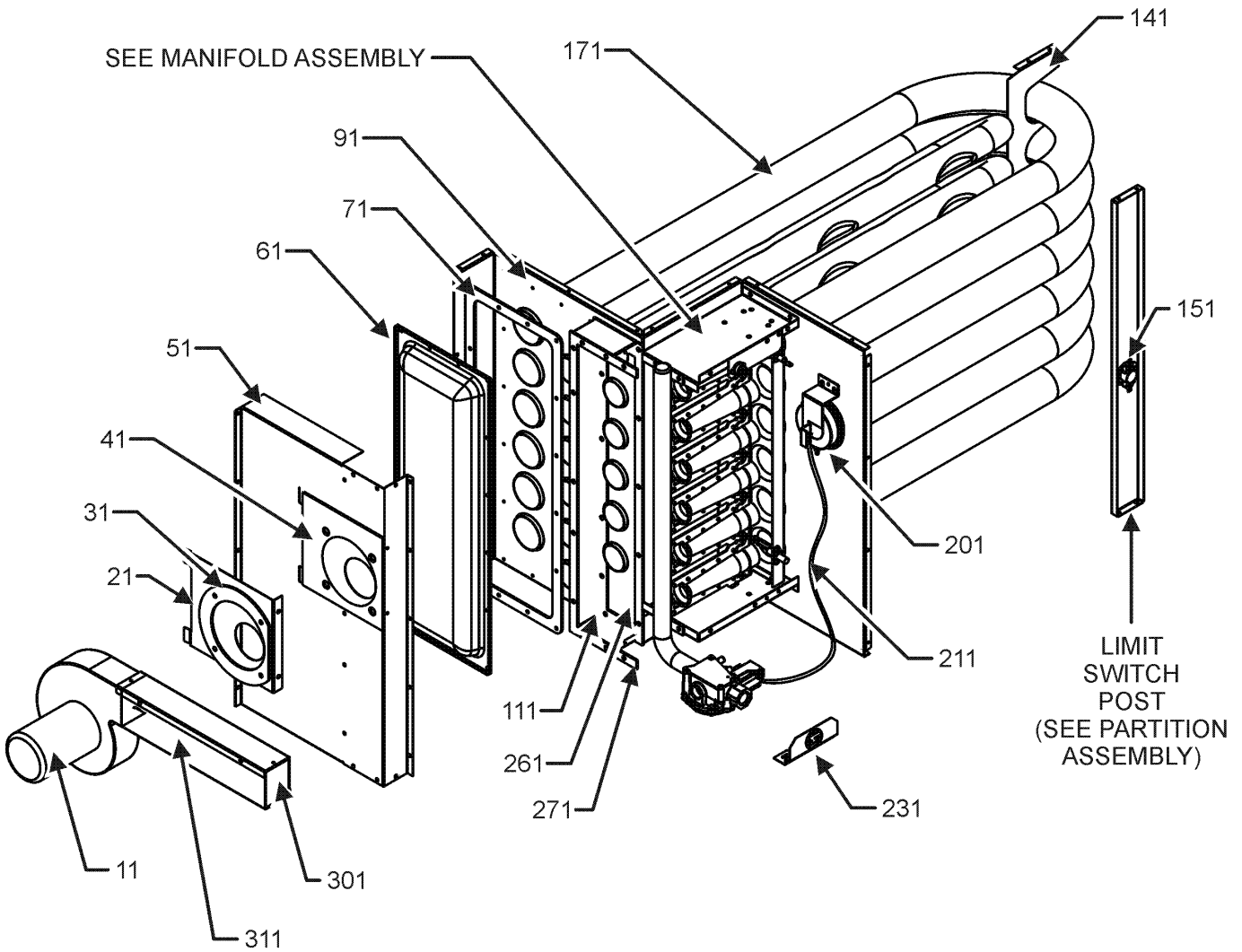
**Image 1:**

21	0163L00135	SHEAVE, FIXED AK66H
31	B1398604	STEEL KEY (000158812) 2.0"
41	0164L00001	NOTCHED FAN BELT AX49
51	0163L00012	VARIABLE PITCH SHEAVE VL40
61	0121L01504	MOTOR BASE
71	0163M00045	BOLT 1/4-20 X 4"
81	3225000F	BELT TIGHTENER ANGLE
91	B1446707	SCREW 5/16-18 X 1" (QTY 4)
101	B1393726	ELECT. CONNECTING BUSHING
111	B3240004	BELT DRIVE MOTOR 2 HP (M1, M2, M3, M4, M5, M6, M7, M8, M9, M10, M11)
111	0131L00006	BELT DRIVE MOTOR 3 HP 575 V (M12)
121	B1393738	BOLT 1/4-20 X 3/4" (QTY 4)
131	03-78497	BLOWER WHEEL
141	04-11526	BLOWER SHAFT
151	04-01526	BLOWER HOUSING
171	0130F00036	PRIMARY LIMIT - PINK
191	B1392918	WASHER, FLAT 1/4 ID X 1 OD (QTY 4)
NS	04-02196	BLOWER BEARING & FRAME ASSY
NS	0259L00008	MOTOR HARNESS-BELT DRIVE

**Expanded Model Nomenclature**

M1 - DCG1502103BFXDAA
M2 - DCG1502103BHDDAA
M3 - DCG1502103BHXBAA
M4 - DCG1502103BXJXAA
M5 - DCG1502103BXXXAB
M6 - DCG1502104BHDGAB
M7 - DCG1502104BHDHAB
M8 - DCG1502104BHXPAB
M9 - DCG1502104BVDBAB
M10 - DCG1502104BXXAAB
M11 - DCG1502104BXXXAC
M12 - DCG1502107BXXDAB

# Heat Exchanger Assembly



# Heat Exchanger Assembly

Ref. Part No: No:	Description:	Ref. Part No: No:	Description:
-------------------	--------------	-------------------	--------------

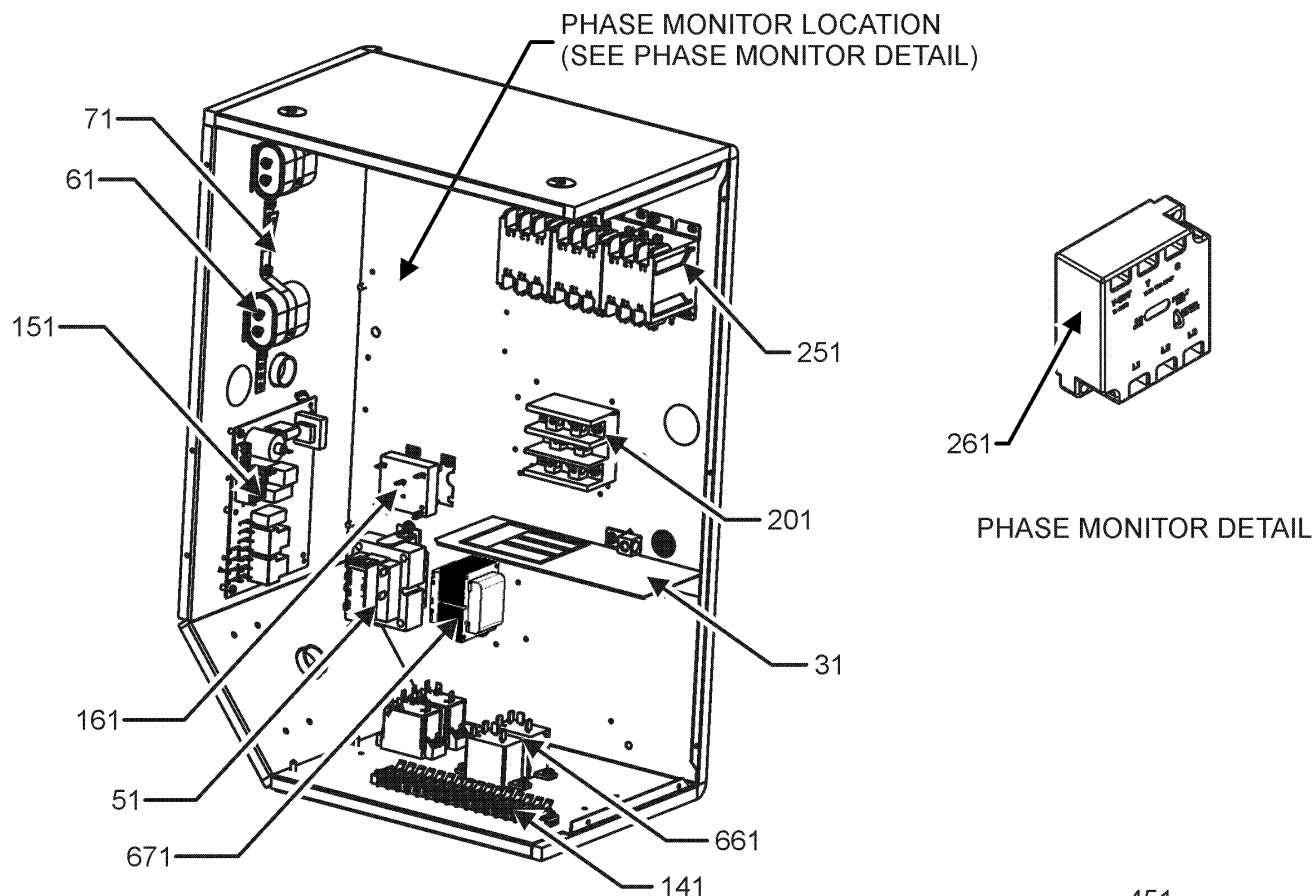
**Image 1:**

11	0131L00002	VENT MOTOR
21	0121L00080	MOUNTING PLATE-ID BLOWER
31	0154L00007	GASKET, BLOWER/ORIFICE PLATE
41	0154L00006	GASKET, COLLECTOR/ORIFICE PLATE
51	0121L00077	COLLECTOR BOX COVER
61	0121L00072	REAR COVER, HEAT EXCHANGER
71	0154L00010	REAR COVER GASKET, HEAT EXCHANGER
91	0121L01434	PANEL-HT TUBES, 6 BURNER
111	0121L00076	COLLECTOR BOX CHANNEL
121	0121L00323	FLAME ROLLOUT BRACKET
131	10123532	MANUAL RESET LIMIT 350°F
141	0121L01436	SUPPORT BRACKET
151	B1370187	PRIMARY LIMIT SWITCH 160°F
171	0270L00171	HEAT EXCHANGER ASSY 6B (M4)
171	0270L00752	PART TUBE ASSY 6B (M1, M2, M3, M5, M6, M7, M8, M9, M10, M11, M12)
181	0130F00010	FLAME SENSOR
191	20261709	IGNITOR
201	11112501	PRESSURE SWITCH
211	A3468601	PRESSURE SWITCH HOSE
221	0163L00000	BECKETT BURNER (QTY 6)
231	0121L00147	PIPE BRACKET-GAS VALVE
241	0121G00268	BRACKET-BURNER TOP/BOT (QTY 2)
251	0151L00000	GAS VALVE (36H)
261	0154L00011	INNER GASKET, COLLECTOR BOX
271	0154L00012	OUTER GASKET, COLLECTOR BOX
281	0163L00007	ORIFICE #34 DRILL (QTY 6)
301	0163L00006	FLUE SCREEN
311	0121L00049	HEAT EXCHANGER FLUE (QTY 2)
321	0163L00010	MANIFOLD - 6 BRNR
331	0121L00075	BURNER BRACKET 6B
NS	0121L00130NG	FLUE COLLAR
NS	B1392609	SEAL STRIP, RED, 1/8 X 1/2 X 100 (QTY 3)

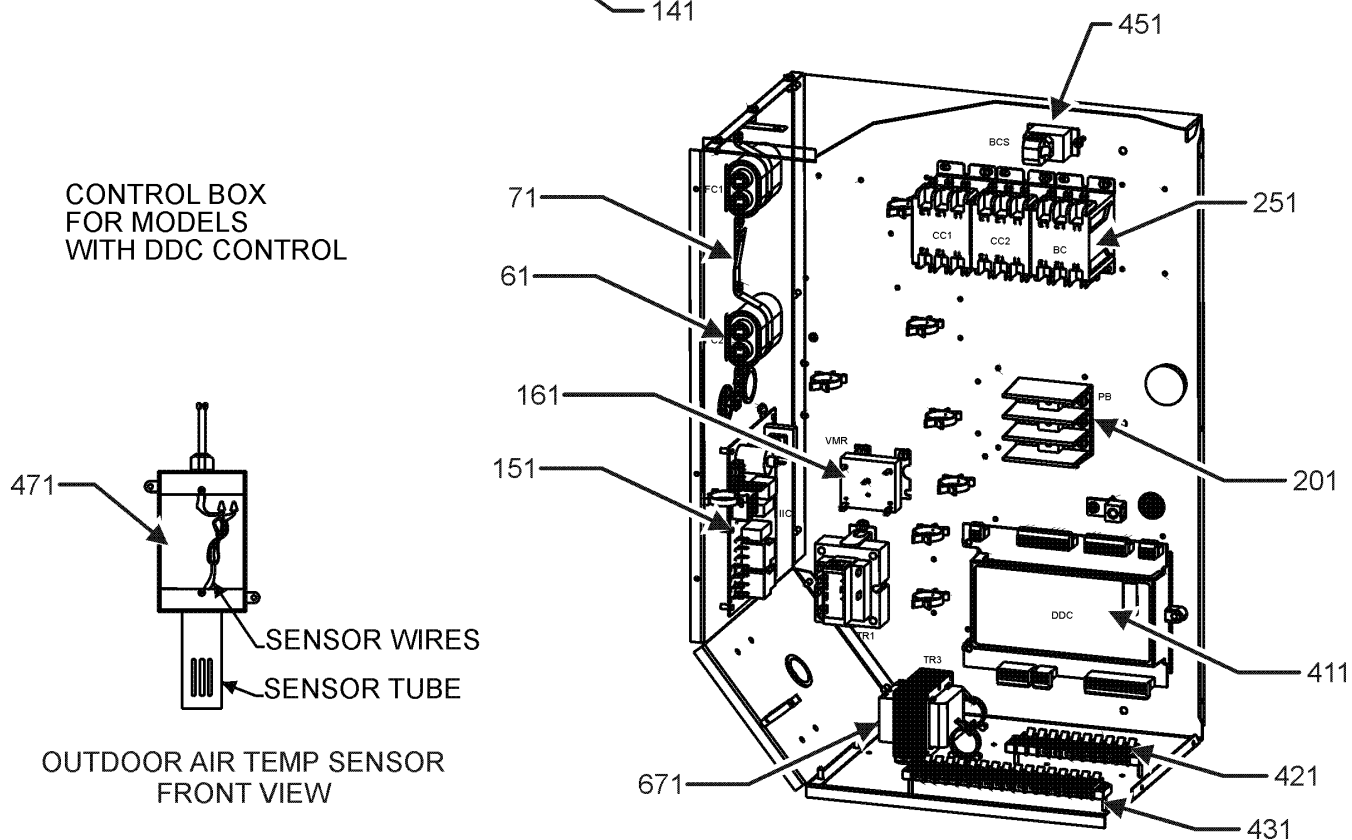
**Expanded Model Nomenclature**

- |                        |
|------------------------|
| M1 - DCG1502103BFXDAA  |
| M2 - DCG1502103BHDDAA  |
| M3 - DCG1502103BHXBAA  |
| M4 - DCG1502103BXJXAA  |
| M5 - DCG1502103BXXXAB  |
| M6 - DCG1502104BHDGAB  |
| M7 - DCG1502104BHDHAB  |
| M8 - DCG1502104BHXPAB  |
| M9 - DCG1502104BVDBAB  |
| M10 - DCG1502104BXXAAB |
| M11 - DCG1502104BXXXAC |
| M12 - DCG1502107BXDXAB |

# Control Box Assembly



CONTROL BOX  
FOR MODELS  
WITH DDC CONTROL



# Control Box Assembly

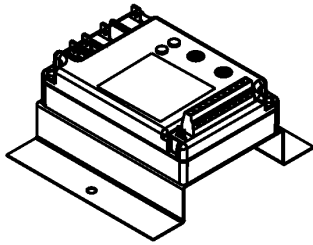
Ref. Part No: No:	Description:	Ref. Part No: No:	Description:
<b>Image 1:</b>		<b>Expanded Model Nomenclature</b>	
31	0121G00491 VOLTAGE BARRIER (M2, M3, M4, M5, M6, M7, M8, M9, M10, M11, M12)	M1 - DCG1502103BFXDAA	
51	0130M00144 TRANSFORMER (M1, M2, M3, M4, M5)	M2 - DCG1502103BHDDAA	
51	0130M00145 TRANSFORMER 480V to 24V, 75VA (M6, M7, M8, M9, M10, M11)	M3 - DCG1502103BHXBAA	
51	0130M00148 TRANSFORMER 575V to 24V, 75VA (M12)	M4 - DCG1502103BXJXAA	
61	CAP100000370LA CAPACITOR 10/370V (M1)	M5 - DCG1502103BXXXAB	
61	CAP050000440LA CAPACITOR 5/440V (M12)	M6 - DCG1502104BHDGAB	
71	20520901 CAPACITOR STRAP (QTY 2)	M7 - DCG1502104BHDHAB	
141	0130M00038 TERMINAL BOARD (M2, M3, M4, M5, M6, M7, M8, M9, M10, M11, M12)	M8 - DCG1502104BHXPAB	
151	PCBAG123 IGNITION BOARD, DSI INTEGRATED	M9 - DCG1502104BVDBAB	
161	0130M00025 24V RELAY (M1)	M10 - DCG1502104BXXAAB	
201	16330-3 POWER BLOCK (M1)	M11 - DCG1502104BXXXAC	
201	16330-3 POWER BLOCK	M12 - DCG1502107BXDXAB	
251	CONT3P030024V CONTACTOR 30 AMP, 3P, 24V (M1)		
261	0130L00105 PHASE MONITOR (M4)		
411	PCBCG100 DDC Controller (M1)		
421	0130M00274 TERMINAL BOARD (M1)		
431	0130M00275 TERMINAL BOARD (M1)		
451	0259L00368 CURRENT SWITCH WITH TERMS (M1)		
471	0130L00108 OD Air Temp Sensor (M1)		
661	0130M00242 RELAY, 24V (QTY 2)		
671	0130M00146 TRANSFORMER 480V TO 230V, 150VA (M6, M7, M8, M9, M10, M11)		
671	0130M00147 TRANSFORMER 575V TO 230V, 150VA (M12)		
NS	0130L00112 Duct Temp Sensor (M1)		
NS	0259L00401 HARN, BINARY INPUT, DDC (M1)		
NS	0259L00382 HARN, CNTL PWR, DDC (M1)		
NS	0259L00400 HARN, IIC (M1)		
NS	0259L00399 HARN, PWR XFMR CNTL (M1)		
NS	0259L00496 HARNESS, NON POW, CONV, OUT (M6, M7, M10)		
NS	0259L00092 HARNESS-SMOKE DETECTOR SENSOR (M1, M2, M6, M7, M8)		
NS	0130L00107 ROOM SENSOR (M1)		
NS	0259L00427 WIRE ASSY (M4)		
NS	0259L00428 WIRE ASSY (M4)		
NS	0259L00494 WIRE HARN, SMOKE DET MED DDC (M1)		
NS	0259L00502 WIRE HARNESS		
NS	0259L00503 WIRE HARNESS (M1)		
NS	0259L00504 WIRE HARNESS (M1)		
NS	0259L00148 WIRE HARNESS ASSY		
NS	0259L00149 WIRE HARNESS ASSY		
NS	0259L00168 WIRE HARNESS, ECONOMIZER		
NS	0259L00090 WIRE HARNESS-SMOKE DETECTOR (M2, M6, M7, M8)		

# Accessory Part List

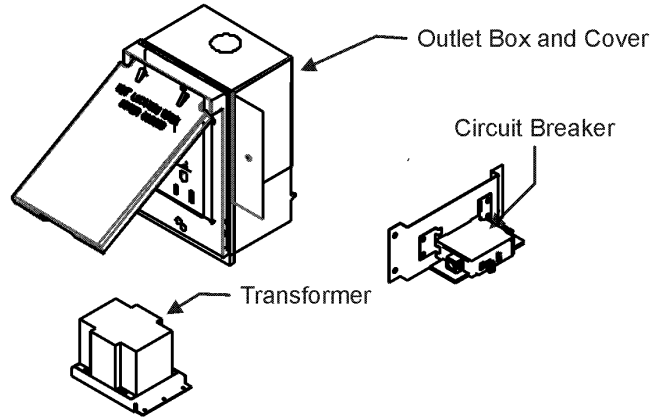
## ACCESSORY PARTS LIST

NOTE: NOT ALL OPTIONS AVAILABLE FOR ALL PRODUCTS

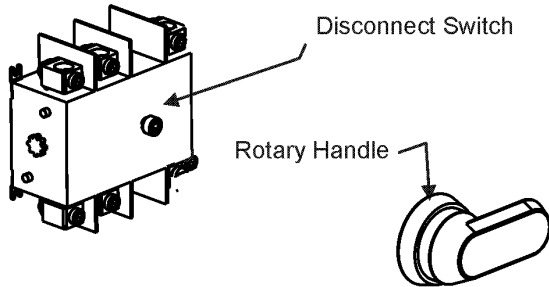
### 1 LOW AMBIENT KITS



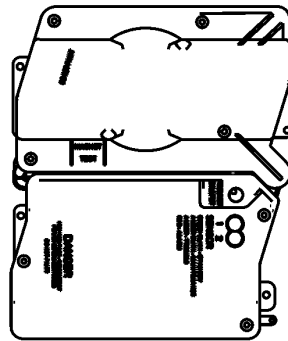
### 2 GFCI CONVENIENCE OUTLET



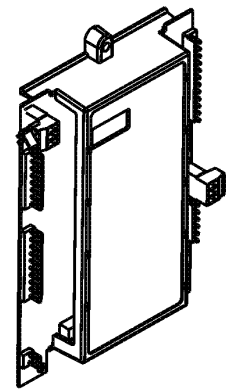
### 3 DISCONNECT MODULE (NON-FUSED)



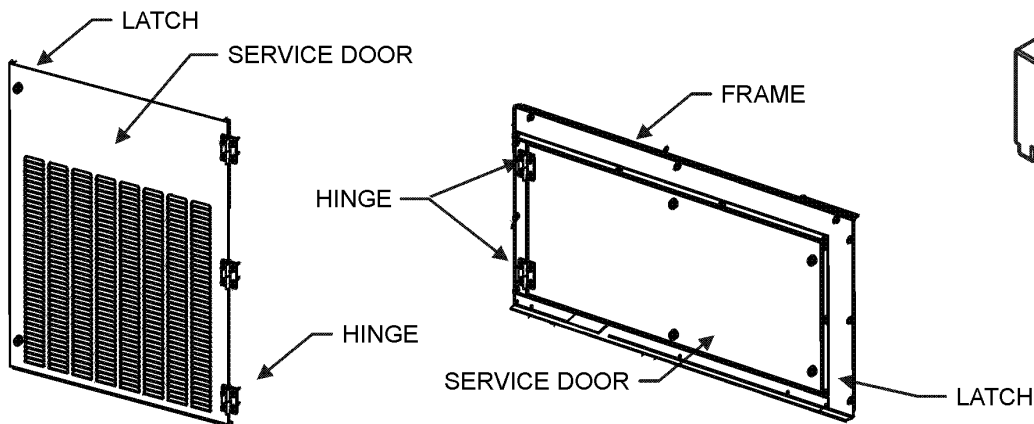
### 4 SMOKE DETECTORS



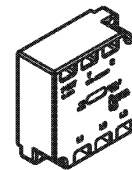
### 5 DDC CONTROL



### 6 HINGED DOOR ASSEMBLIES



### 7 PHASE MONITOR



# Accessory Part List

Ref. Part No:	No:	Description:	Ref. Part No:	No:	Description:
<i>Image 1:</i>			<b>Expanded Model Nomenclature</b>		
NS	DDNECNJ90150B	7.5-12.5 TON DFLOW ECON (M9)	M1	-	DCG1502103BFXDAA
NS	10366D10B	7.5-12.5T DFLOW ECON, DDC (M1)	M2	-	DCG1502103BHDDAA
NS	0121L00316	BRACKET-CONV OUTLET MOUNT (M3, M6, M7, M8, M9, M10)	M3	-	DCG1502103BHXBAA
NS	0121L00768	BRACKET-SMOKE DETECTOR (M1, M2, M6, M7, M8)	M4	-	DCG1502103BXJXAA
NS	0130M00065	CIRCUIT BREAKER, CONVENIENCE OUTLET (M3, M8, M9)	M5	-	DCG1502103BXXXAB
NS	0121L00973NG	DISCONNECT SWITCH COVER (M2, M3, M6, M7, M8)	M6	-	DCG1502104BHDGAB
NS	0121L01414NG	DOOR FRAME, BLOWER (M2, M6, M7, M9, M12)	M7	-	DCG1502104BHDHAB
NS	0121L01417NG	DOOR FRAME, CONTROL (M2, M6, M7, M9, M12)	M8	-	DCG1502104BHXPAB
NS	0121L02483NG	DOOR, SERVICE, BACK, BLOWER (M2, M6, M7, M9, M12)	M9	-	DCG1502104BVDBAB
NS	0121L02482NG	DOOR, SERVICE, FRONT, BLOWER (M2, M6, M7, M9, M12)	M10	-	DCG1502104BXXAAB
NS	0130L00012	GANG BOX-GFCI OUTLET (M3, M6, M7, M8, M9, M10)	M11	-	DCG1502104BXXXAC
NS	0130L00039	HANDLE, ROTARY (M2, M3, M6, M7, M8)	M12	-	DCG1502107BXDXAB
NS	0163M00307	HINGE, LEFT HAND (M2, M6, M7, M9, M12)			
NS	0163M00308	HINGE, RIGHT HAND (M2, M6, M7, M9, M12)			
NS	0163M00322	LATCH (M2, M6, M7, M9, M12)			
NS	0121L02221NG	PNT, DOOR FRAME, FILTER (M2, M6, M7, M9, M12)			
NS	0121L02222NG	PNT, SERVICE DOOR BACK FILTER (M2, M6, M7, M9, M12)			
NS	0121L02219NG	PNT, SERVICE DOOR FRONT FILTER (M2, M6, M7, M9, M12)			
NS	0161G00012	POWER OUTLET BOX (M3, M6, M7, M8, M9, M10)			
NS	0130L00103	RECEPTACLE-GFCI OUTLET (M3, M6, M7, M8, M9, M10)			
NS	0121L01416NG	SERVICE DOOR BACK, CONTROL (M2, M6, M7, M9, M12)			
NS	0121L01415NG	SERVICE DOOR FRONT,CONTROL (M2, M6, M7, M9, M12)			
NS	0130L00056	SHAFT, CUT (M2, M3)			
NS	0130L00057	SHAFT, CUT (M6, M7, M8)			
NS	0130L00049	SHAFT, DISCONNECT (M2, M3, M6, M7, M8)			
NS	D4120	SMOKE DETECTOR, PHOTO 4WIRE (M1, M2, M6, M7, M8)			
NS	0130L00027	SWITCH-DISCONNECT 100A (M2, M3)			
NS	0130L00046	SWITCH-DISCONNECT 60A (M6, M7, M8)			
NS	0130M00061	TRANSFORMER, CONVENIENCE OUTLET (M3, M8, M9)			