

## Commercial 10 Ton High Static 2-Speed Package Gas Unit

DCG1202103WAXXAB  
DCG1202103WHLMAB  
DCG1202103WHXHAB  
DCG1202103WHXVAB  
DCG1202103WRKDAB  
DCG1202103WRKZAB  
DCG1202103WRSNAB  
DCG1202103WWDAAB  
DCG1202103WWDCAB  
DCG1202103WWDGAB  
DCG1202103WWKNAB  
DCG1202103WWXBAB  
DCG1202103WWXNAB  
DCG1202103WXDAAB  
DCG1202103WXXCAB  
DCG1202104WAXZAC  
DCG1202104WHSBAC  
DCG1202104WHXAAC  
DCG1202104WHXXAC  
DCG1202104WJDDAC  
DCG1202104WJKBAC  
DCG1202104WJMTAC  
DCG1202104WMSAAC  
DCG1202104WRKAAC  
DCG1202104WVXXAC  
DCG1202104WWXCAC  
DCG1202104WXXXAC  
DCG1202107WVXXAB  
DCG1202107WXXAAB  
DCG1202107WXXXAB



This manual is to be used by qualified technicians only.

This manual replaces RP-D1200D.

# Important Information

---

## Index

Functional Parts List .....	3
Illustration and Parts .....	4 - 17

*Views shown are for parts illustrations only, not servicing procedures*

### Text Codes:

AR - As Required

NA - Not Available

NS - Not Shown

00000000 - See Note

QTY - Quantity Example (QTY 3) (If Quantity not shown, Quantity = 1)

M - Model Example (M1) (If M Code not shown, then part is used on all Models)

### Expanded Model Nomenclature:

Example M1 - Model#1 M2 - Model#2 M3 - Model#3
---

Daikin Company, L.P. is not responsible for personal injury or property damage resulting from improper service. Review all service information before beginning repairs.

Warranty service must be performed by an authorized technician, using authorized factory parts. If service is required after the warranty expires, Daikin Company, L.P. also recommends contacting an authorized technician and using authorized factory parts.

Daikin Company, L.P. reserves the right to discontinue, or change at any time, specifications or designs without notice or without incurring obligations.

For assistance within the U.S.A. contact:

Equipment Support  
Daikin North America, LLC  
19001 Kermier Road  
Waller, Texas 77484  
855-770-5678-Telephone  
713-863-2382-Facsimile

For assistance outside the U.S.A. contact:

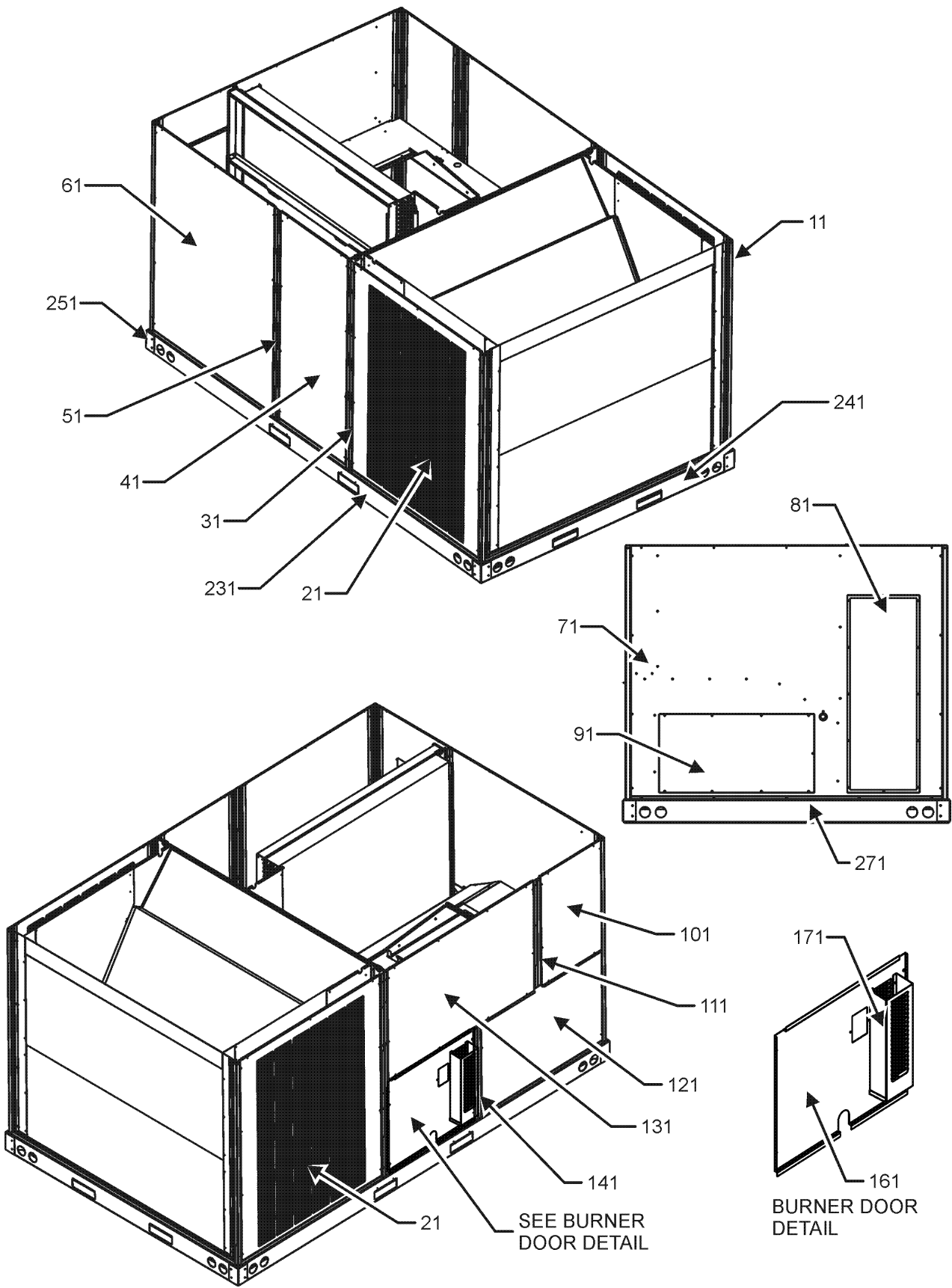
International Division  
Daikin North America, LLC  
19001 Kermier Road  
Waller, Texas 77484  
713-861-2500-Telephone  
713-863-2382-Facsimile

# Functional Parts

**Part No:**      **Description:**

16220-3	BLOCK, POWER	0130M00598	TRANSFORMER, 75VA, 575V TO 24V (M28, M29, M30)
CAP100000370LA	CAPACITOR 10/370V (M1, M2, M3, M4, M5, M6, M7, M8, M9, M10, M11, M12, M13, M14, M15, M16, M17, M18, M19, M20, M21, M22, M23, M24, M25, M26, M27)	0131L00002	VENT MOTOR
ZP51K5ETFE130	COMP, 5100, 575/60/3 (M28, M29, M30)	<b>Expanded Model Nomenclature</b>	
ZP51K5ETF5130	COMP, 51000, 208/230/60/3 (M1, M2, M3, M4, M5, M6, M7, M8, M9, M10, M11, M12, M13, M14, M15)	M1 - DCG1202103WAXXAB	
ZP51K5ETFD130	COMP, 51000, 460/60/3 (M16, M17, M18, M19, M20, M21, M22, M23, M24, M25, M26, M27)	M2 - DCG1202103WHLMAB	
CONT3P025024V	CONTACTOR 25 AMP, 3P, 24V (QTY 4)	M3 - DCG1202103WHXHAB	
0130M00031	CUT-OUT SWITCH, HIGH PRESSURE	M4 - DCG1202103WHXVAB	
0130M00030	CUT-OUT SWITCH, HIGH PRESSURE	M5 - DCG1202103WRKDAB	
0130L00003	CUT-OUT SWITCH, LOW PRESSURE	M6 - DCG1202103WRKZAB	
0130L00002	CUT-OUT SWITCH, LOW PRESSURE	M7 - DCG1202103WRSNAB	
0130L00112	Duct Temp Sensor (M5, M6, M7, M23, M24)	M8 - DCG1202103WWDAAB	
0164L00002	FAN BELT, NOTCHED (M1, M2, M3, M4, M5, M6, M7, M8, M9, M10, M11, M12, M13, M14, M15, M16, M17, M18, M19, M20, M21, M22, M23, M24, M25, M26, M27)	M9 - DCG1202103WWD CAB	
0164L00010	FAN BELT, NOTCHED (M28, M29, M30)	M10 - DCG1202103WWDGAB	
10625733	FAN BLADE 22" ALUM CCW (QTY 2)	M11 - DCG1202103WWKNAB	
0130F00010	FLAME SENSOR	M12 - DCG1202103WWXBAB	
0151L00000	GAS VALVE, MANIFOLD (36H)	M13 - DCG1202103WWXNAB	
PCBAG123	IGNITION BOARD, DSI INTEGRATED	M14 - DCG1202103WXDAAB	
20261709	IGNITOR	M15 - DCG1202103WXXCAB	
10123532	MANUAL RESET LIMIT 350°F	M16 - DCG1202104WAXZAC	
0131M00430	MOTOR, 1/3 HP, 1 SP, 6 PL (M1, M3, M5, M6, M7, M8, M10, M11, M12, M13, M14)	M17 - DCG1202104WHSBAC	
0131M00858	MOTOR, 1/3 HP, OD (M28, M29, M30)	M18 - DCG1202104WHXAAC	
0131L00073	Motor, 3ph, 5hp (M1, M2, M3, M4, M5, M6, M7, M8, M9, M10, M11, M12, M13, M14, M15)	M19 - DCG1202104WHXXAC	
0131L00074	Motor, 3ph, 5hp (M16, M17, M18, M19, M20, M21, M22, M23, M24, M25, M26, M27)	M20 - DCG1202104WJDDAC	
0131L00075	Motor, 3ph, 5hp (M28, M29, M30)	M21 - DCG1202104WJKBAC	
0131L00064	Motor, Cond, 1/3 HP, 208/230V (M2, M4, M9, M15)	M22 - DCG1202104WJMTAC	
0131L00065	Motor, Cond, 1/3 HP, 460V (M22, M26)	M23 - DCG1202104WMSAAC	
0131M00774	MOTOR, Cond, 1/3 HP, OD (M16, M17, M18, M19, M20, M21, M23, M24, M25, M27)	M24 - DCG1202104WRKAAC	
0130L00108	OD Air Temp Sensor (M5, M6, M7, M23, M24)	M25 - DCG1202104WVXXAC	
PCBCG103	PCB, CONTROL, HP, GAS ,AC (M5, M6, M7, M23, M24)	M26 - DCG1202104WWXCAC	
0130L00105	PHASE MONITOR (M2, M22)	M27 - DCG1202104WXXXAC	
11112501	PRESSURE SWITCH	M28 - DCG1202107WVXXAB	
B1370199	PRIMARY LIMIT SWITCH 190°F	M29 - DCG1202107WXXAAB	
20162904	PRIMARY LIMIT-TEMPERATURE CONTROL	M30 - DCG1202107WXXXAB	
0130M00242	RELAY, 24V (QTY 2)		
0130M00025	RELAY, SPDT		
0130M00038	TERMINAL BOARD		
0130M00596	TRANS, 150VA, 480V TO 230V (M16, M17, M18, M19, M20, M21, M22, M23, M24, M25, M26, M27)		
0130M00597	TRANS, 150VA, 575V TO 230V (M28, M29, M30)		
0130M00594	TRANSFORMER (M1, M2, M3, M4, M5, M6, M7, M8, M9, M10, M11, M12, M13, M14, M15)		
0130M00595	TRANSFORMER, 75VA, 480V TO 24V (M16, M17, M18, M19, M20, M21, M22, M23, M24, M25, M26, M27)		

# Cabinet Assembly



# Cabinet Assembly

Ref. Part No:	Description:	Ref. Part No:	Description:
<b>Image 1:</b>		<b>Expanded Model Nomenclature</b>	
11	0121L00065RFNG CORNER POST (QTY 4)	M1	- DCG1202103WAXXAB
11	0121L01407RFNG CORNER POST (M2, M5, M6, M8, M9, M10, M11, M14, M20, M21, M22, M24)	M2	- DCG1202103WHLMAB
21	0121L00511NG LOUVERED SIDE PANEL (QTY 2)	M3	- DCG1202103WHXHAB
31	0121L00738RFNG ROLL FORM SIDE POST (M1, M3, M4, M7, M12, M13, M15, M16, M17, M18, M19, M23, M25, M26, M27, M28, M29, M30)	M4	- DCG1202103WHXVAB
31	0121L01400RFNG SIDE POST (M2, M5, M6, M8, M9, M10, M11, M14, M20, M21, M22, M24)	M5	- DCG1202103WRKDAB
41	0121L00737NG FILTER DOOR	M6	- DCG1202103WRKZAB
51	0121L00739RFNG FILTER DOOR POST (M1, M3, M4, M7, M12, M13, M15, M16, M17, M18, M19, M23, M25, M26, M27, M28, M29, M30)	M7	- DCG1202103WRSNAB
51	0121L01432RFNG FILTER DOOR POST (M2, M5, M6, M8, M9, M10, M11, M14, M20, M21, M22, M24)	M8	- DCG1202103WWDAAAB
61	0121L00510NG ECONOMIZER DOOR (M1, M2, M3, M4, M14, M15, M16, M17, M18, M19, M20, M21, M22, M23, M27, M28, M29, M30)	M9	- DCG1202103WWD CAB
71	0121L01364NG DUCT PANEL (M1, M15, M16, M25, M27, M28, M30)	M10	- DCG1202103WWDGAB
71	0121L01365NG DUCT PANEL (M4, M5, M6, M9, M19, M20, M26)	M11	- DCG1202103WWKNAB
71	0121L01366NG DUCT PANEL (M2, M3, M7, M8, M10, M11, M12, M13, M14, M17, M18, M21, M22, M23, M24, M29)	M12	- DCG1202103WWXBAB
81	0121L00082NG RETURN DUCT COVER	M13	- DCG1202103WWXNAB
91	0121L00099NG SUPPLY DUCT COVER	M14	- DCG1202103WXDAAB
101	0121L00974NG CONTROL DOOR	M15	- DCG1202103WXXCAB
111	0121L02303RFNG PAINTED CONTROL POST (M1, M3, M4, M7, M12, M13, M15, M16, M17, M18, M19, M23, M25, M26, M27, M28, M29, M30)	M16	- DCG1202104WAXZAC
111	0121L02517RFNG RF, PAINTED CNTL POST HINGED (M2, M5, M6, M8, M9, M10, M11, M14, M20, M21, M22, M24)	M17	- DCG1202104WHSBAC
121	0121L00767NG ELECTRIC HEAT DOOR	M18	- DCG1202104WHXAAC
131	0121L00763NG BLOWER DOOR	M19	- DCG1202104WHXXAC
141	0121L00765RFNG BURNER BOX POST	M20	- DCG1202104WJDDAC
161	0121L00766NG BURNER DOOR	M21	- DCG1202104WJKBAC
171	0121L00129 DOOR RAIN SHIELD	M22	- DCG1202104WJMTAC
231	0121L01099RF RAIL, BASE SIDES (QTY 2)	M23	- DCG1202104WMSAAC
241	0121L00834RF RAIL, BASE ENDS	M24	- DCG1202104WRKAAC
251	0121G00301 BRACKET-RAIL CORNERS (QTY 4)	M25	- DCG1202104WVXXAC
271	0121L00071RF RAIL-BASE DUCT END	M26	- DCG1202104WWXCAC
NS	0121L00727 ECONOMIZER COVER (M8, M9, M10, M11, M12, M13, M25, M26, M28)	M27	- DCG1202104WXXXAC
NS	0121L01310 ECONOMIZER COVER (M5, M6, M7, M24)	M28	- DCG1202107WVXXAB
NS	0164L00009 GASKET-RUBBER, CPOST (QTY 3)	M29	- DCG1202107WXXAAB
NS	0164L00011 GASKET-RUBBER, SIDE POST (QTY 5)	M30	- DCG1202107WXXXAB

# Top Panel and Tubing Assembly

IMAGE 1

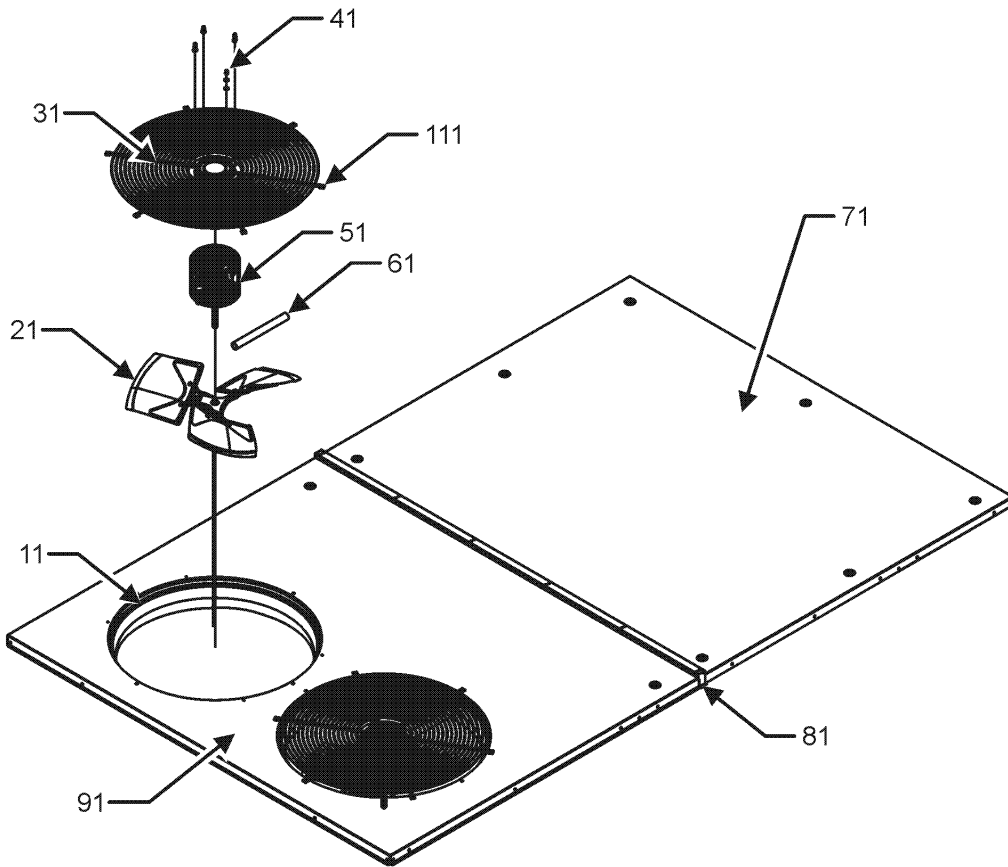
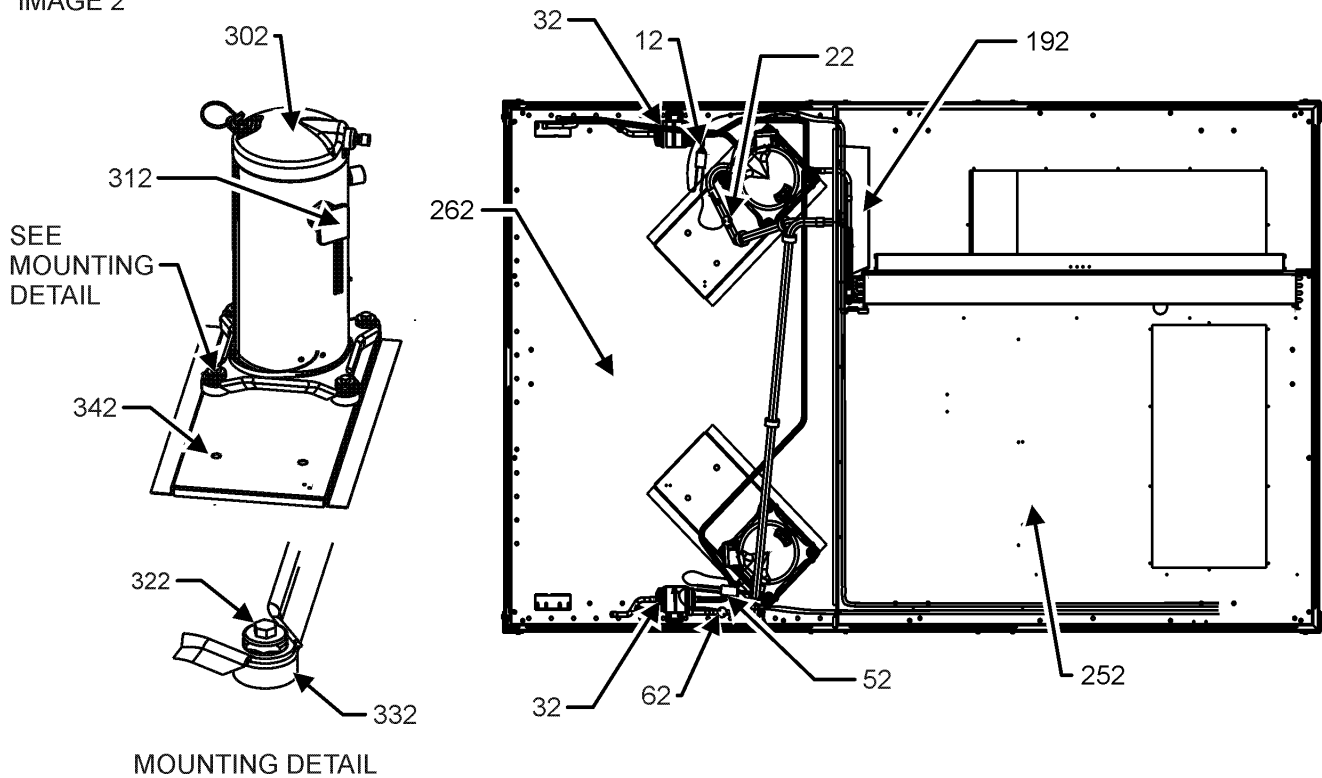


IMAGE 2

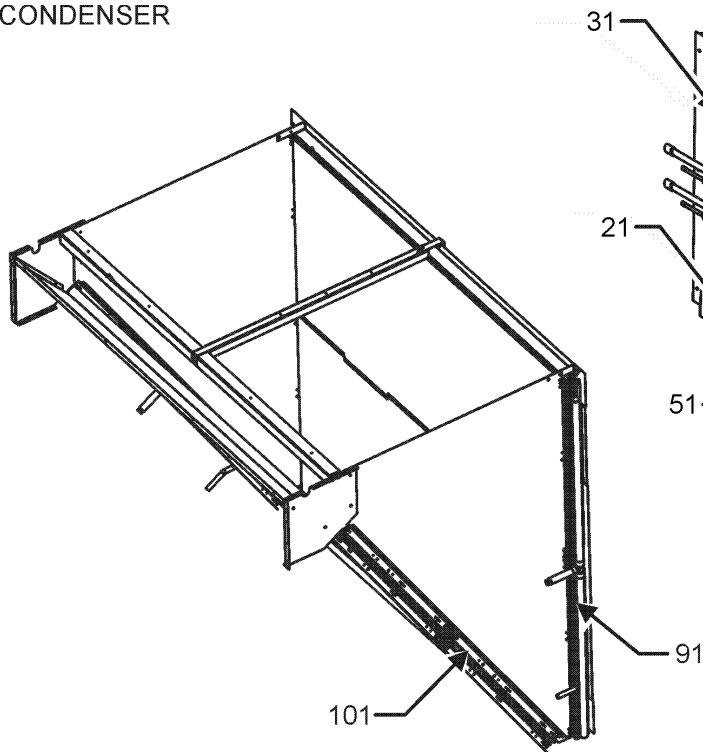


# Top Panel and Tubing Assembly

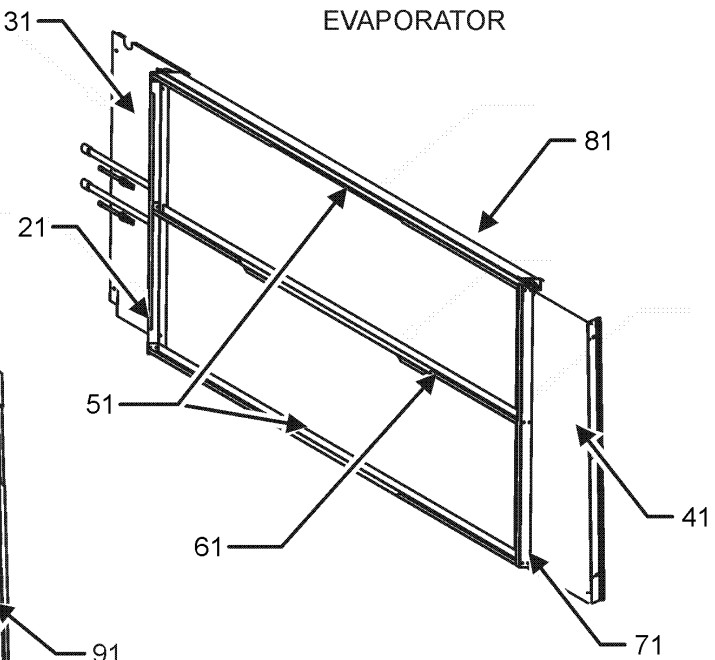
Ref. Part No: No:	Description:	Ref. Part No: No:	Description:
<b>Image 1:</b>		<b>Expanded Model Nomenclature</b>	
11	0161L00000 VENTURI RING 22" (QTY 2)	M1	- DCG1202103WAXXAB
21	10625733 FAN BLADE 22" ALUM CCW (QTY 2)	M2	- DCG1202103WHLMAB
31	0152G00000 FAN GRILLE, RAISED (QTY 2)	M3	- DCG1202103WHXHAB
41	0163M00006P ACORN NUT 5/16 HEX BLACK (QTY 8)	M4	- DCG1202103WHXVAB
51	0131M00430 MOTOR, 1/3 HP, 1 SP, 6 PL (M1, M3, M5, M6, M7, M8, M10, M11, M12, M13, M14)	M5	- DCG1202103WRKDAB
51	0131M00858 MOTOR, 1/3 HP, OD (M28, M29, M30)	M6	- DCG1202103WRKZAB
51	0131L00064 Motor, Cond, 1/3 HP, 208/230V (M2, M4, M9, M15)	M7	- DCG1202103WRSNAB
51	0131L00065 Motor, Cond, 1/3 HP, 460V (M22, M26)	M8	- DCG1202103WWDAAB
51	0131M00774 MOTOR, Cond, 1/3 HP, OD (M16, M17, M18, M19, M20, M21, M23, M24, M25, M27)	M9	- DCG1202103WWDCAB
61	0161R00003P CONDUIT (QTY 2)	M10	- DCG1202103WWDGAB
71	0121L01119NG PAINTED TOP PANEL INDOOR	M11	- DCG1202103WWKNAB
81	20455902 SPLICE GASKET .50 X .25 (QTY 8)	M12	- DCG1202103WWXBAB
91	0121L01118NG PAINTED TOP PANEL OUTDOOR	M13	- DCG1202103WWXNAB
111	0163M00004 SCREW #10X3/4", BLACK (QTY 12)	M14	- DCG1202103WXDAAB
NS	0259L00511 HARNESS COND MOTOR	M15	- DCG1202103WXXCAB
NS	0259L00512 HARNESS COND MOTOR	M16	- DCG1202104WAXZAC
NS	0163M00005P WASHER, BLACK (.50 OD .218ID) (QTY 8)	M17	- DCG1202104WHSBAC
<b>Image 2:</b>		M18	- DCG1202104WHXAAC
12	0130M00031 CUT-OUT SWITCH, HIGH PRESSURE	M19	- DCG1202104WHXXAC
22	0130L00003 CUT-OUT SWITCH, LOW PRESSURE	M20	- DCG1202104WJDDAC
32	B1219204 BI-FLOW FILTER DRIER (QTY 2)	M21	- DCG1202104WJKBAC
52	0130L00002 CUT-OUT SWITCH, LOW PRESSURE	M22	- DCG1202104WJMTAC
62	0130M00030 CUT-OUT SWITCH, HIGH PRESSURE	M23	- DCG1202104WMSAAC
192	0121L00359 SHIELD-EVAPORATOR DRIP	M24	- DCG1202104WRKAAC
252	0121L00944 BASE PAN-INDOOR	M25	- DCG1202104WVXXAC
262	0121L02129 BASE PAN, OUTDOOR	M26	- DCG1202104WWXCAC
302	ZP51K5ETFE130 COMP, 5100, 575/60/3 (M28, M29, M30)	M27	- DCG1202104WXXXAC
302	ZP51K5ETF5130 COMP,51000,208/230/60/3 (M1, M2, M3, M4, M5, M6, M7, M8, M9, M10, M11, M12, M13, M14, M15)	M28	- DCG1202107WVXXAB
302	ZP51K5ETFD130 COMP,51000,460/60/3 (M16, M17, M18, M19, M20, M21, M22, M23, M24, M25, M26, M27)	M29	- DCG1202107WXXAAB
312	0159L00066 COMPRESSOR SCROLL HARNESS	M30	- DCG1202107WXXXAB
312	0159L00067 COMPRESSOR SCROLL HARNESS		
322	M0221641 TF SHOULDER SCREW (QTY 8)		
332	B1339533 COMPRESSOR GROMMET (QTY 8)		
342	0121L02128 COMPRESSOR MOUNTING PLATE (QTY 2)		
NS	B1373315 ACCESS FITTING (QTY 4)		
NS	0141L00006X BOARD FORK (QTY 2)		
NS	0121L00055 BRACKET-FORK BOARD (QTY 4)		
NS	0163M00175 CAP WITH O-RING (QTY 4)		

# Condenser, Evaporator & Partition Assy

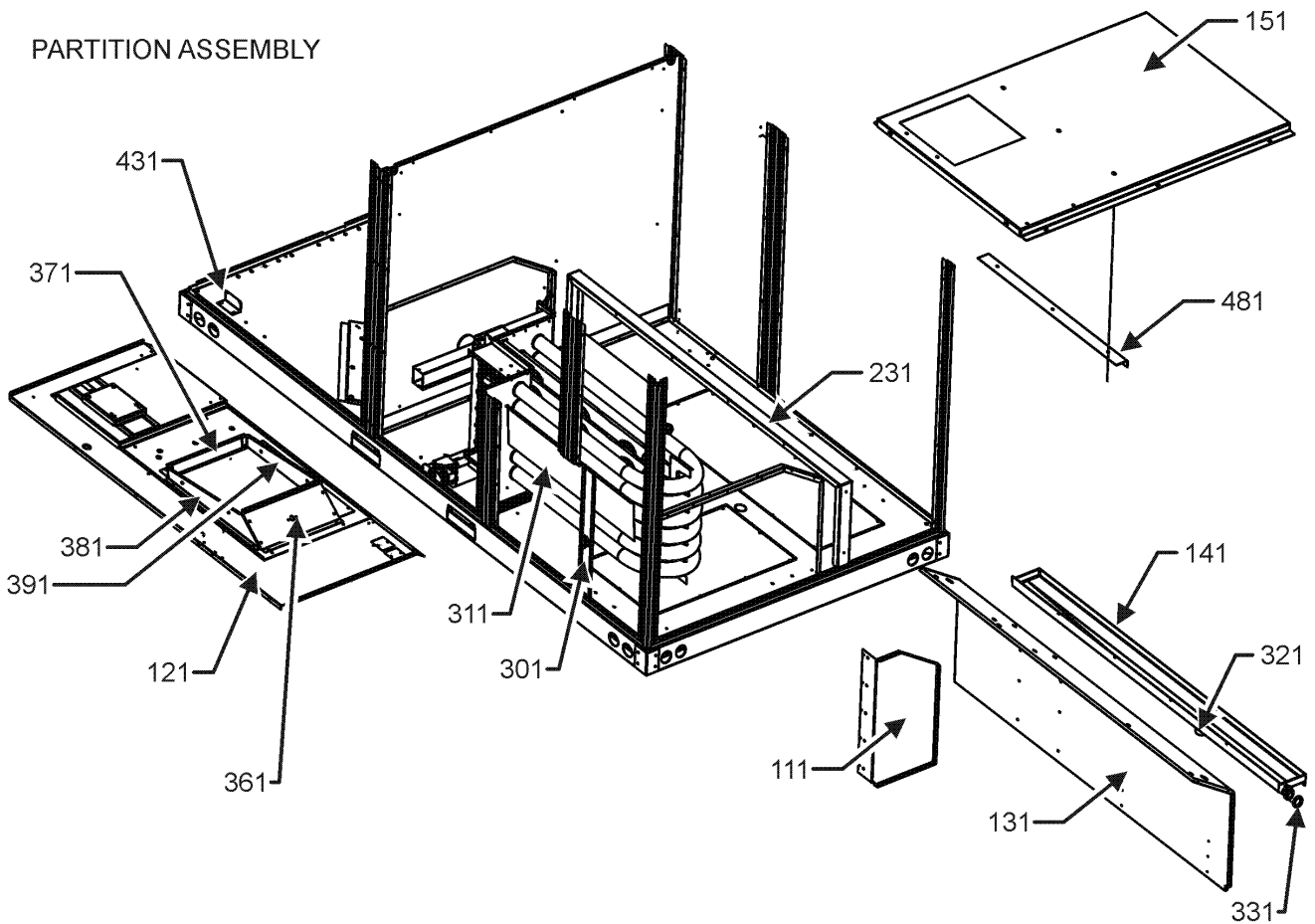
CONDENSER



EVAPORATOR



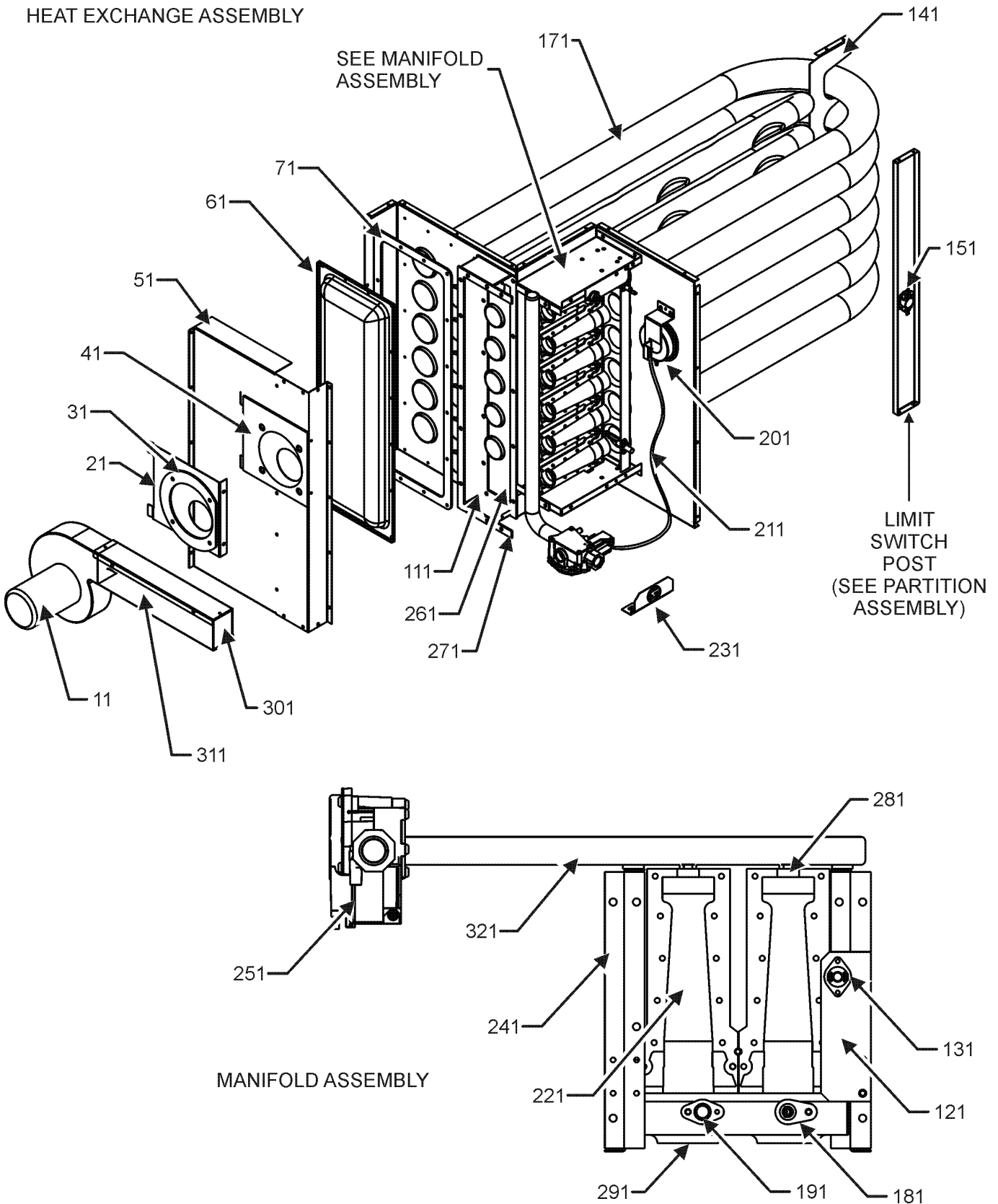
PARTITION ASSEMBLY



# Condenser, Evaporator & Partition Assy

Ref. Part No: No:	Description:	Ref. Part No: No:	Description:
<b>Image 1:</b>		<b>Expanded Model Nomenclature</b>	
21	0121L01257	ANGLE, FILTER VERTICAL	M1 - DCG1202103WAXXAB
31	0121L00210	EVAP EXTENSION-RETURN SIDE	M2 - DCG1202103WHLMAB
41	0121L00843	EVAP EXTENSION-HAIRPIN SIDE	M3 - DCG1202103WHXHAB
51	0121L00650	FILTER ANGLE-VERTICAL (RETURN SIDE)	M4 - DCG1202103WHXVAB
61	0121L00649	FILTER ANGLE - HORIZONTAL (QTY 2)	M5 - DCG1202103WRKDAB
71	0121L00358	FILTER ANGLE-VERTICAL (HAIRPIN SIDE)	M6 - DCG1202103WRKZAB
81	0202L00085	EVAP COIL ASSY, CFLOW	M7 - DCG1202103WRSNAB
91	0201L00200	COND COIL ASSY, 5MM C1	M8 - DCG1202103WWDAAB
101	0201L00201	COND COIL ASSY, 5MM C2	M9 - DCG1202103WWDCAB
111	0121L00522	BLOCKOFF-HEAT EXCHANGER	M10 - DCG1202103WWDGAB
121	0121L03117	DECK-BLOWER	M11 - DCG1202103WWKNAB
131	0121L00374	DECK SIDE CHANNEL	M12 - DCG1202103WWXBAB
141	0161L00002	DRAIN PAN	M13 - DCG1202103WWXNAB
151	0121L00366	BASE-HEAT EXCHANGER	M14 - DCG1202103WXDAAB
231	0121L02984	SUPPORT, PAN, DRAIN	M15 - DCG1202103WXXCAB
301	0121L03099	POST-LIMIT SWITCH	M16 - DCG1202104WAXZAC
311	0121L00136	BAFFLE-BLOWER	M17 - DCG1202104WHSBAC
321	0163L00071	DRAIN PAN PLUG	M18 - DCG1202104WHXAAC
331	0154L00009	GASKET-DRAIN PAN	M19 - DCG1202104WHXXAC
361	0121L00168	201	M20 - DCG1202104WJDDAC
371	0121L00169	BLOWER TRANSITION, LH END	M21 - DCG1202104WJKBAC
381	0121L00092	BLOWER TRANSITION, FRONT	M22 - DCG1202104WJMTAC
391	0121L00094	BLOWER TRANSITION, BACK	M23 - DCG1202104WMSAAC
431	0121L00914	BRACE-CONDENSER (QTY 2)	M24 - DCG1202104WRKAAC
481	0121L00143	ANGLE-HT BASE BRACE	M25 - DCG1202104WVXXAC
NS	0160L00175	AIR FILTER 16 X 24 X 2 (QTY 4)	M26 - DCG1202104WWXCAC
NS	0121L01398	DECK, SUPPORT BLOWER (M2, M5, M6, M8, M9, M10, M11, M14, M20, M21, M22, M24)	M27 - DCG1202104WXXXAC
NS	0121L01402	DECK, SUPPORT CONTROL (M2, M5, M6, M8, M9, M10, M11, M14, M20, M21, M22, M24)	M28 - DCG1202107WVXXAB
NS	0121L00321	SMOKE DETECTOR COVER (QTY 2)	M29 - DCG1202107WXXAAB
			M30 - DCG1202107WXXXAB

# Heat Exchange Assembly

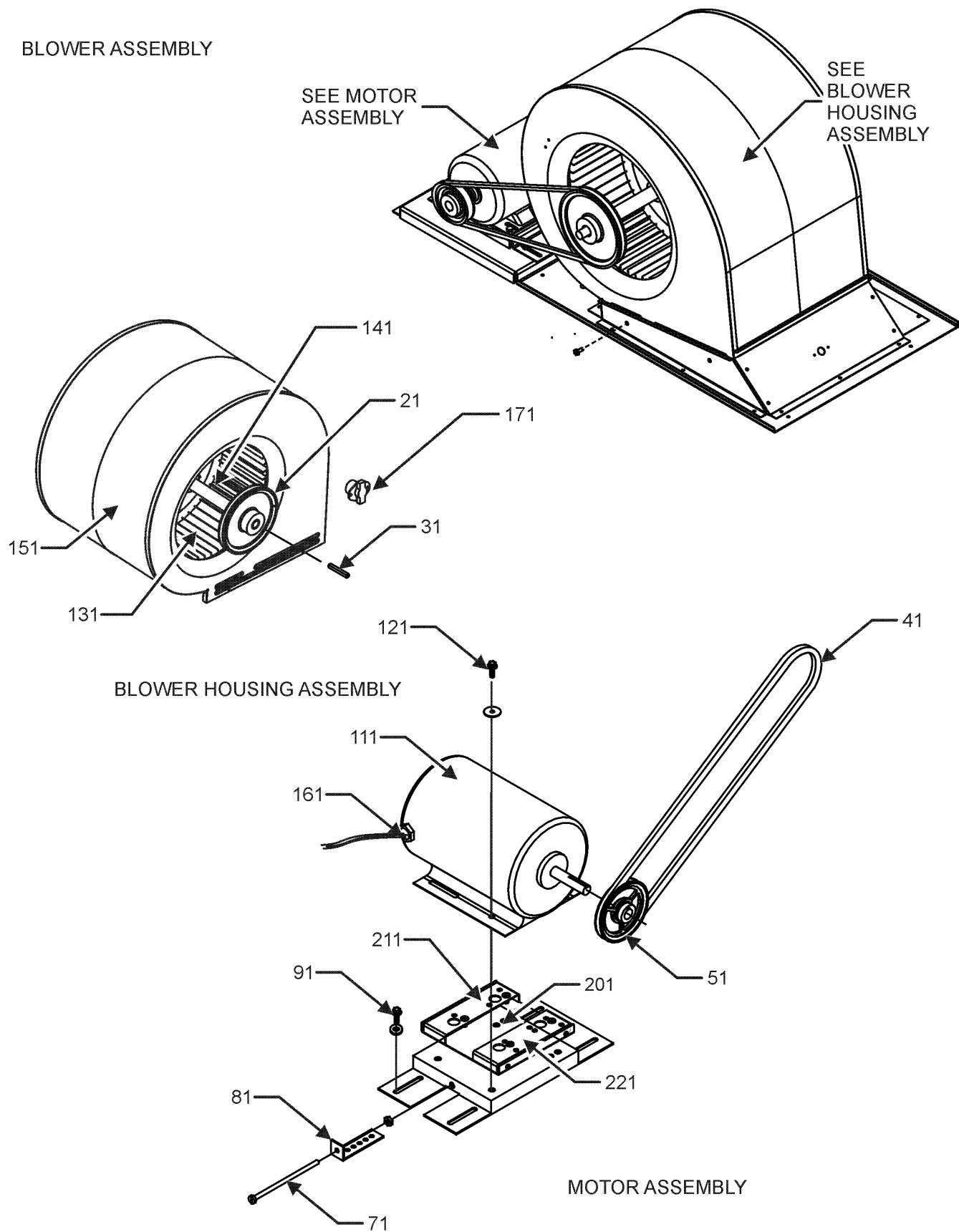


# Heat Exchange Assembly

Ref. Part No: No:	Description:	Ref. Part No: No:	Description:
<b>Image 1:</b>		<b>Expanded Model Nomenclature</b>	
11	0131L00002 VENT MOTOR	M1	- DCG1202103WAXXAB
21	0121L00080 MOUNTING PLATE-ID BLOWER	M2	- DCG1202103WHLMAB
31	0154L00007 GASKET, BLOWER/ORIFICE PLATE	M3	- DCG1202103WHXHAB
41	0154L00006 GASKET, COLLECTOR/ORIFICE PLATE	M4	- DCG1202103WHXVAB
51	0121L00077 COLLECTOR BOX COVER	M5	- DCG1202103WRKDAB
61	0121L00072 REAR COVER, HEAT EXCHANGER	M6	- DCG1202103WRKZAB
71	0154L00010 REAR COVER GASKET, HEAT EXCHANGER	M7	- DCG1202103WRSNAB
111	0121L00076 COLLECTOR BOX CHANNEL	M8	- DCG1202103WWDAAB
121	0121L00323 FLAME ROLLOUT BRACKET	M9	- DCG1202103WWDCAB
131	10123532 MANUAL RESET LIMIT 350°F	M10	- DCG1202103WWDGAB
141	0121L01436 SUPPORT-HT TUBES 6	M11	- DCG1202103WWKNAB
151	B1370199 PRIMARY LIMIT SWITCH 190°F	M12	- DCG1202103WWXBAB
171	0270L00171 HEAT EXCHANGER ASSY 6B (M2, M5, M6, M7, M11, M17, M21, M23, M24)	M13	- DCG1202103WWXNAB
171	0270L00752 HEAT EXCHANGER ASSY 6B (M1, M3, M4, M8, M9, M10, M12, M13, M14, M15, M16, M18, M19, M20, M22, M25, M26, M27, M28, M29, M30)	M14	- DCG1202103WXDAAB
181	0130F00010 FLAME SENSOR	M15	- DCG1202103WXXCAB
191	20261709 IGNITOR	M16	- DCG1202104WAXZAC
201	11112501 PRESSURE SWITCH	M17	- DCG1202104WHSBAC
211	A3468601 PRESSURE SWITCH HOSE	M18	- DCG1202104WHXAAC
221	0163L00000 BECKETT BURNER (QTY 6)	M19	- DCG1202104WHXXAC
231	0121L00147 PIPE BRACKET-GAS VALVE	M20	- DCG1202104WJDDAC
241	0121G00268 BRACKET-BURNER TOP/BOT (QTY 2)	M21	- DCG1202104WJKBAC
251	0151L00000 GAS VALVE, MANIFOLD (36H)	M22	- DCG1202104WJMTAC
261	0154L00011 INNER GASKET, COLLECTOR BOX	M23	- DCG1202104WMSAAC
271	0154L00012 OUTER GASKET, COLLECTOR BOX	M24	- DCG1202104WRKAAC
281	0163L00007 ORIFICE #34 DRILL (QTY 6)	M25	- DCG1202104WVXXAC
291	0121L00075 BRACKET-6 BURNERS	M26	- DCG1202104WWXCAC
301	0163L00006 FLUE SCREEN	M27	- DCG1202104WXXXAC
311	0121L00049 HEAT EXCHANGER FLUE (QTY 2)	M28	- DCG1202107WVXXAB
321	0163L00010 MANIFOLD - 6 BRNR	M29	- DCG1202107WXXAAB
NS	0121L00130NG FLUE COLLAR	M30	- DCG1202107WXXXAB
NS	B1392609 SEAL STRIP, RED, 1/8 X 1/2 X 100 (M2, M5, M6, M7, M11, M17, M21, M23, M24)		

# Blower Assembly

## BLOWER ASSEMBLY



# Blower Assembly

## Ref. Part

No: No:

Description:

## Ref. Part

No: No:

Description:

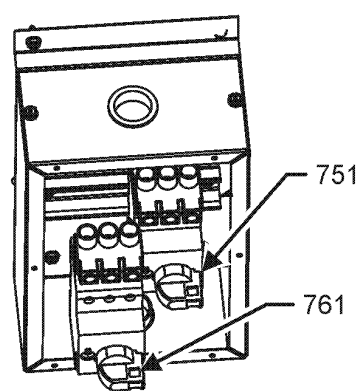
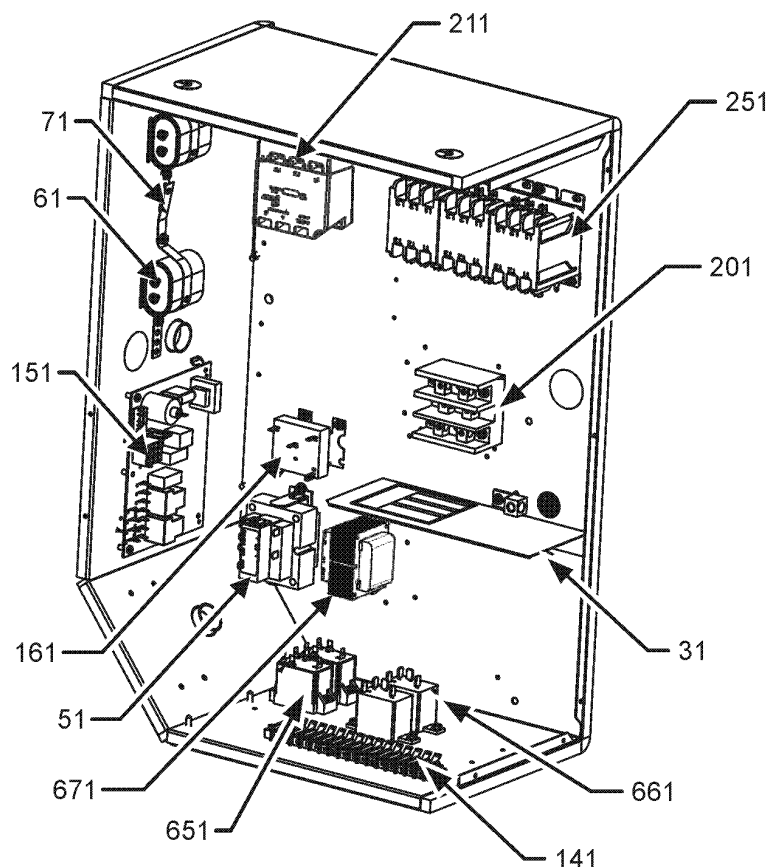
### Image 1:

21	0163L00194	SHEAVE, FIXED AK84H (M1, M2, M3, M4, M5, M6, M7, M8, M9, M10, M11, M12, M13, M14, M15)
31	0163M00407	MACHINE KEY, SPECIAL
41	0164L00002	FAN BELT, NOTCHED (M1, M2, M3, M4, M5, M6, M7, M8, M9, M10, M11, M12, M13, M14, M15, M16, M17, M18, M19, M20, M21, M22, M23, M24, M25, M26, M27)
41	0164L00010	FAN BELT, NOTCHED (M28, M29, M30)
51	0163L00052	VARIABLE PITCH SHEAVE
71	0163M00045	BOLT 1/4-20 X 4"
81	3225000F	BELT TIGHTENER ANGLE
91	B1446707	SCREW 5/16-18 X 1" (QTY 4)
111	0131L00073	Motor, 3ph, 5hp (M1, M2, M3, M4, M5, M6, M7, M8, M9, M10, M11, M12, M13, M14, M15)
111	0131L00074	Motor, 3ph, 5hp (M16, M17, M18, M19, M20, M21, M22, M23, M24, M25, M26, M27)
111	0131L00075	Motor, 3ph, 5hp (M28, M29, M30)
121	B1393738	BOLT 1/4-20 X 3/4" (QTY 4)
131	03-78497	BLOWER WHEEL
141	04-11526	BLOWER SHAFT
151	04-01526	BLOWER HOUSING
161	0259L00160	HARNES-BELT DRIVE 2 SP MOTOR
171	20162904	PRIMARY LIMIT-TEMPERATURE CONTROL
201	0121L02331	PLATE-MOTOR MOUNTING
211	0121L02330	ANGLE-MOTOR MOUNT, FRONT
221	0121L01461	ANGLE-MOTOR MOUNT, BACK
NS	0121L03460	BASE, MOTOR
NS	04-02196	BLOWER BEARING & FRAME ASSY
NS	B1392923	WASHER / FLAT (QTY 4)
NS	B1392918	WASHER, FLAT 1/4 ID X 1 OD (QTY 4)

### Expanded Model Nomenclature

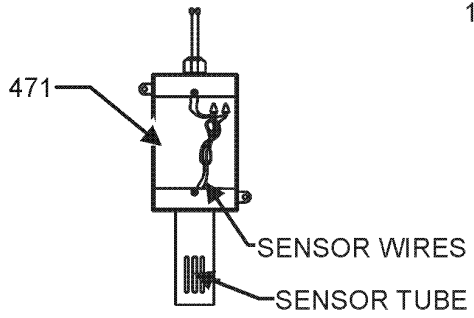
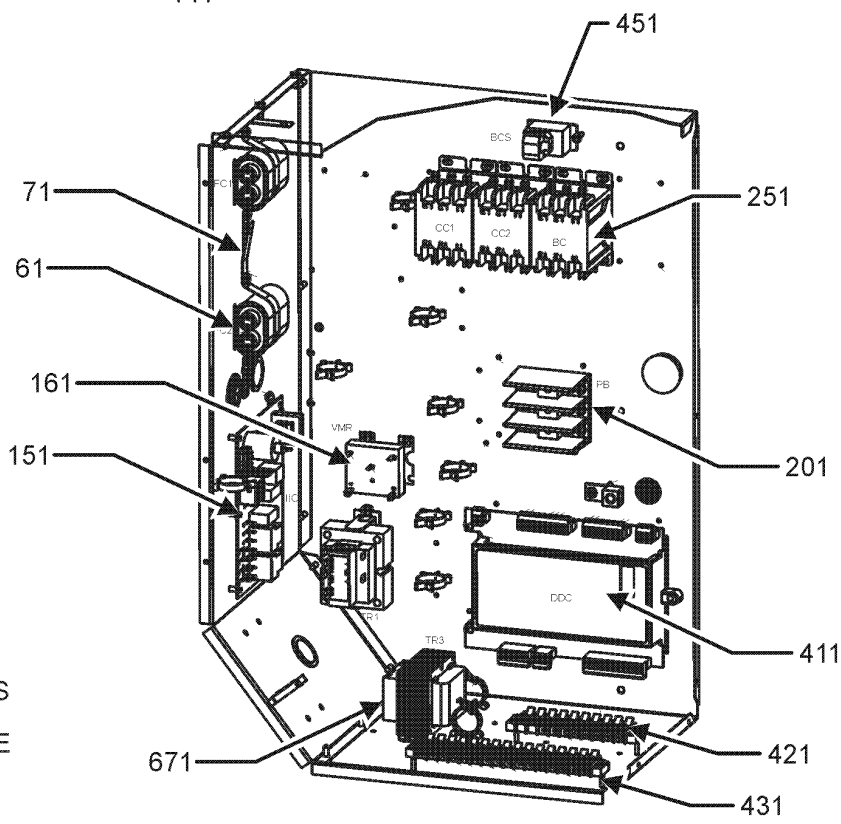
M1 - DCG1202103WAXXAB
M2 - DCG1202103WHLMAB
M3 - DCG1202103WHXHAB
M4 - DCG1202103WHXVAB
M5 - DCG1202103WRKDAB
M6 - DCG1202103WRKZAB
M7 - DCG1202103WRSNAB
M8 - DCG1202103WWDAAB
M9 - DCG1202103WWDCAB
M10 - DCG1202103WWDGAB
M11 - DCG1202103WWKNAB
M12 - DCG1202103WWXBAB
M13 - DCG1202103WWXNAB
M14 - DCG1202103WXDAAB
M15 - DCG1202103WXXCAB
M16 - DCG1202104WAXZAC
M17 - DCG1202104WHSBAC
M18 - DCG1202104WHXAAC
M19 - DCG1202104WHXXAC
M20 - DCG1202104WJDDAC
M21 - DCG1202104WJKBAC
M22 - DCG1202104WJMTAC
M23 - DCG1202104WMSAAC
M24 - DCG1202104WRKAAC
M25 - DCG1202104WVXXAC
M26 - DCG1202104WWXCAC
M27 - DCG1202104WXXXAC
M28 - DCG1202107WVXXAB
M29 - DCG1202107WXXAAB
M30 - DCG1202107WXXXAB

# Control Box Assembly



CIRCUIT BREAKER CONTROL ASSEMBLY

CONTROL BOX FOR MODELS WITH DDC CONTROL



OUTDOOR AIR TEMP SENSOR FRONT VIEW

# Control Box Assembly

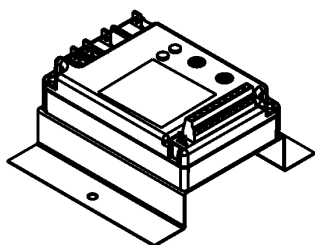
Ref. Part No:	No:	Description:	Ref. Part No:	No:	Description:
<b>Image 1:</b>			<b>Image 1:</b>		
31	0121G00491	VOLTAGE BARRIER	NS	0259L00428	WIRE ASSY (M2, M22)
51	0130M00597	TRANS, 150VA, 575V TO 230V (M28, M29, M30)	NS	0259L00447	WIRE ASSY (M22)
51	0130M00594	TRANSFORMER (M1, M2, M3, M4, M5, M6, M7, M8, M9, M10, M11, M12, M13, M14, M15)	NS	0259L00502	WIRE HARNESS
51	0130M00595	TRANSFORMER, 75VA, 480V TO 24V (M16, M17, M18, M19, M20, M21, M22, M23, M24, M25, M26, M27)	NS	0259L00148	WIRE HARNESS ASSY
61	CAP100000370LA	CAPACITOR 10/370V (M1, M2, M3, M4, M5, M6, M7, M8, M9, M10, M11, M12, M13, M14, M15, M16, M17, M18, M19, M20, M21, M22, M23, M24, M25, M26, M27)	NS	0259L00149	WIRE HARNESS ASSY
71	20520901	CAPACITOR STRAP (QTY 2)	NS	0259L00152	WIRE HARNESS ASSY
141	0130M00038	TERMINAL BOARD	NS	0259L00192	WIRE HARNESS, ECONOMIZER
151	PCBAG123	IGNITION BOARD, DSI INTEGRATED	NS	0259L00090	WIRE HARNESS-SMOKE DETECTOR (M3, M4, M10, M11, M13, M16, M20, M22)
161	0130M00025	RELAY, SPDT	<b>Expanded Model Nomenclature</b> M1 - DCG1202103WAXXAB M2 - DCG1202103WHLMAB M3 - DCG1202103WHXHAB M4 - DCG1202103WHXVAB M5 - DCG1202103WRKDAB M6 - DCG1202103WRKZAB M7 - DCG1202103WRSNAB M8 - DCG1202103WWDAAB M9 - DCG1202103WWDCAB M10 - DCG1202103WWDGAB M11 - DCG1202103WWKNAB M12 - DCG1202103WWXBAB M13 - DCG1202103WWXNAB M14 - DCG1202103WXDAAB M15 - DCG1202103WXXCAB M16 - DCG1202104WAXZAC M17 - DCG1202104WHSBAC M18 - DCG1202104WHXAAC M19 - DCG1202104WHXXAC M20 - DCG1202104WJDDAC M21 - DCG1202104WJKBAC M22 - DCG1202104WJMTAC M23 - DCG1202104WMSAAC M24 - DCG1202104WRKAAC M25 - DCG1202104WVXXAC M26 - DCG1202104WWXCAC M27 - DCG1202104WXXXAC M28 - DCG1202107WVXXAB M29 - DCG1202107WXXAAB M30 - DCG1202107WXXXAB		
201	16220-3	BLOCK, POWER			
211	0130L00105	PHASE MONITOR (M2, M22)			
251	CONT3P025024V	CONTACTOR 25 AMP, 3P, 24V (QTY 4)			
411	PCBCG103	PCB, CONTROL, HP, GAS ,AC (M5, M6, M7, M23, M24)			
421	0130M00274	TERMINAL BOARD (M5, M6, M7, M23, M24)			
431	0130M00275	TERMINAL BOARD (M5, M6, M7, M23, M24)			
451	0259L00368	CURRENT SWITCH WITH TERMS (M5, M6, M7, M23, M24)			
471	0130L00108	OD Air Temp Sensor (M5, M6, M7, M23, M24)			
651	10135604	RELAY (QTY 2)			
661	0130M00242	RELAY, 24V (QTY 2)			
671	0130M00596	TRANS, 150VA, 480V TO 230V (M16, M17, M18, M19, M20, M21, M22, M23, M24, M25, M26, M27)			
671	0130M00598	TRANSFORMER, 75VA, 575V TO 24V (M28, M29, M30)			
751	0130L00070	ROTARY MANUAL MOTOR PROTECTOR (M16, M17, M18, M19, M20, M21, M22, M23, M24, M25, M26, M27, M28, M29, M30)			
751	0130L00084	ROTARY MANUAL MOTOR PROTECTOR (M1, M2, M3, M4, M5, M6, M7, M8, M9, M10, M11, M12, M13, M14, M15)			
761	0130L00070	ROTARY MANUAL MOTOR PROTECTOR (M16, M17, M18, M19, M20, M21, M22, M23, M24, M25, M26, M27, M28, M29, M30)			
761	0130L00082	ROTARY MANUAL MOTOR PROTECTOR (M1, M2, M3, M4, M5, M6, M7, M8, M9, M10, M11, M12, M13, M14, M15)			
NS	0259L00153	2 SPEED CONTROL HARNESS			
NS	0259L00155	2 SPEED RELAY HARNESS			
NS	0259L00161	CIRCUIT BREAKER HARNESS			
NS	0259L00161	CIRCUIT BREAKER HARNESS			
NS	0130L00112	Duct Temp Sensor (M5, M6, M7, M23, M24)			
NS	0259L00160	HARNESS-BELT DRIVE 2 SP MOTOR			
NS	0259L00181	HARNESS-BELT DRIVE 2 SP MOTOR (M1, M2, M3, M4, M5, M6, M7, M8, M9, M10, M11, M12, M13, M14, M15)			
NS	0259L00092	HARNESS-SMOKE DETECTOR SENSOR (M3, M4, M5, M6, M7, M10, M11, M13, M16, M20, M22)			
NS	0130L00107	ROOM SENSOR (M5, M6, M7, M23, M24)			

# Accessory Parts List

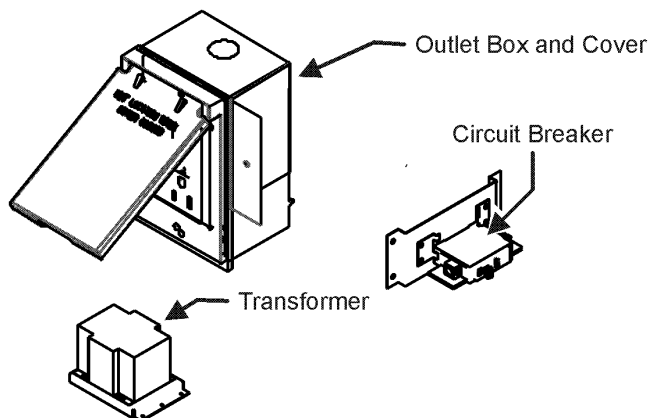
## ACCESSORY PARTS LIST

NOTE: NOT ALL OPTIONS AVAILABLE FOR ALL PRODUCTS

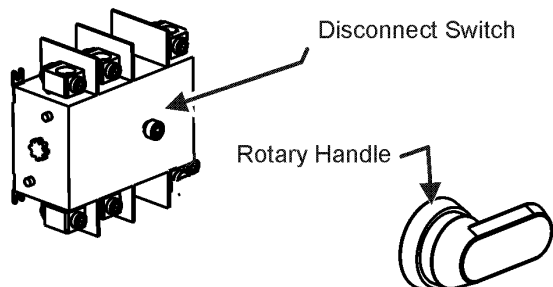
### 1 LOW AMBIENT KITS



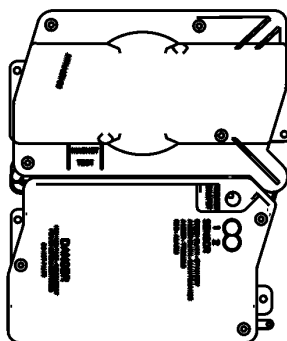
### 2 GFCI CONVENIENCE OUTLET



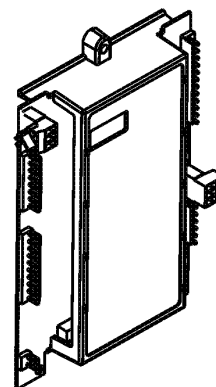
### 3 DISCONNECT MODULE (NON-FUSED)



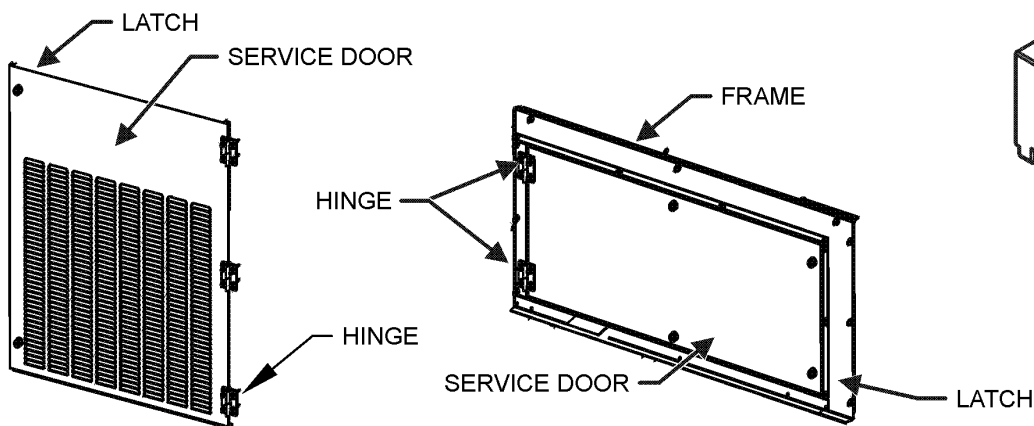
### 4 SMOKE DETECTORS



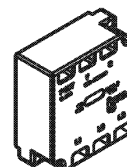
### 5 DDC CONTROL



### 6 HINGED DOOR ASSEMBLIES



### 7 PHASE MONITOR



# Accessory Parts List

Ref. Part No:	No:	Description:	Ref. Part No:	No:	Description:
<b>Image 1:</b>			<b>Image 1:</b>		
NS	DDNECNJ90150B	7.5-12.5 TON DFLOW ECON (M8, M9, M10, M11, M12, M13, M25, M26, M28)	NS	0130L00057	SHAFT, CUT (M3, M8, M10, M17, M18, M21, M22, M23, M24)
NS	1036610B	7.5-12.5 TON DFLOW ECONOMIZER (M1, M16, M20, M21, M22)	NS	0130L00049	SHAFT, DISCONNECT (M2, M3, M4, M5, M6, M7, M8, M9, M10, M11, M12, M13, M17, M18, M19, M20, M21, M22, M23, M24, M26)
NS	10366D10B	7.5-12.5T DFLOW ECON, DDC (M5, M6, M7, M24)	NS	D4120	SMOKE DETECTOR, PHOTO 4WIRE (M4, M10, M11, M13, M20)
NS	0121L00316	BRACKET-CONV OUTLET MOUNT (M2, M3, M7, M8, M10, M11, M12, M13, M14, M17, M18, M21, M22, M23, M24, M29)	NS	0130L00027	SWITCH-DISCONNECT 100A (M2, M7, M11, M12, M13)
NS	0121L00768	BRACKET-SMOKE DETECTOR (M4, M10, M11, M13, M20)	NS	0130L00046	SWITCH-DISCONNECT 60A (M3, M4, M5, M6, M8, M9, M10, M17, M18, M19, M20, M21, M22, M23, M24, M26)
NS	0130M00065	CIRCUIT BREAKER, CONVENIENCE OUTLET (M2, M7, M11, M12, M13, M17, M21, M22)	NS	0130M00061	TRANSFORMER, CONVENIENCE OUTLET (M2, M7, M11, M12, M13, M17, M21, M22)
NS	0121L00973NG	DISCONNECT SWITCH COVER (M2, M3, M4, M5, M6, M7, M8, M9, M10, M11, M12, M13, M17, M18, M19, M20, M21, M22, M23, M24, M26)	<b>Expanded Model Nomenclature</b>		
NS	0121L01397NG	DOOR FRAME, BLOWER (M2, M5, M6, M8, M9, M10, M11, M14, M20, M21, M22, M24)	<div style="border: 1px solid black; padding: 5px;"> M1 - DCG1202103WAXXAB  M2 - DCG1202103WHLMA B  M3 - DCG1202103WHXHAB  M4 - DCG1202103WHXVAB  M5 - DCG1202103WRKDAB  M6 - DCG1202103WRKZAB  M7 - DCG1202103WRSNAB  M8 - DCG1202103WWDAAB  M9 - DCG1202103WWDCAB  M10 - DCG1202103WWDGAB  M11 - DCG1202103WWKNAB  M12 - DCG1202103WWXBAB  M13 - DCG1202103WWXNAB  M14 - DCG1202103WXDAAB  M15 - DCG1202103WXXCAB  M16 - DCG1202104WAXZAC  M17 - DCG1202104WHSBAC  M18 - DCG1202104WHXAAC  M19 - DCG1202104WHXXAC  M20 - DCG1202104WJDDAC  M21 - DCG1202104WJKBAC  M22 - DCG1202104WJMTAC  M23 - DCG1202104WMSAAC  M24 - DCG1202104WRKAAC  M25 - DCG1202104WVXXAC  M26 - DCG1202104WWXCAC  M27 - DCG1202104WXXXAC  M28 - DCG1202107WVXXAB  M29 - DCG1202107WXXAAB  M30 - DCG1202107WXXXAB </div>		
NS	0121L01406NG	DOOR FRAME, CONTROL (M2, M5, M6, M8, M9, M10, M11, M14, M20, M21, M22, M24)			
NS	0121L02481NG	DOOR, SERVICE, BACK, BLOWER (M2, M5, M6, M8, M9, M10, M11, M14, M20, M21, M22, M24)			
NS	0121L02480NG	DOOR, SERVICE, FRONT, BLOWER (M2, M5, M6, M8, M9, M10, M11, M14, M20, M21, M22, M24)			
NS	0130L00012	GANG BOX-GFCI OUTLET (M2, M3, M7, M8, M10, M11, M12, M13, M14, M17, M18, M21, M22, M23, M24, M29)			
NS	0130L00039	HANDLE, ROTARY (M2, M3, M4, M5, M6, M7, M8, M9, M10, M11, M12, M13, M17, M18, M19, M20, M21, M22, M23, M24, M26)			
NS	0163M00307	HINGE, LEFT HAND (M2, M5, M6, M8, M9, M10, M11, M14, M20, M21, M22, M24)			
NS	0163M00308	HINGE, RIGHT HAND (M2, M5, M6, M8, M9, M10, M11, M14, M20, M21, M22, M24)			
NS	0163M00322	LATCH (M2, M5, M6, M8, M9, M10, M11, M14, M20, M21, M22, M24)			
NS	0130M00059	LOW AMBIENT KIT (M2, M4, M9, M15, M22, M26)			
NS	0121L02220NG	PNT, DOOR FRAME FILTER (M2, M5, M6, M8, M9, M10, M11, M14, M20, M21, M22, M24)			
NS	0121L02223NG	PNT, SERVICE DOOR BACK FILTER (M2, M5, M6, M8, M9, M10, M11, M14, M20, M21, M22, M24)			
NS	0121L02218NG	PNT, SERVICE DOOR FRONT FILTER (M2, M5, M6, M8, M9, M10, M11, M14, M20, M21, M22, M24)			
NS	0161G00012	POWER OUTLET BOX (M2, M3, M7, M8, M10, M11, M12, M13, M14, M17, M18, M21, M22, M23, M24, M29)			
NS	0130L00103	RECEPTACLE-GFCI OUTLET (M2, M3, M7, M8, M10, M11, M12, M13, M14, M17, M18, M21, M22, M23, M24, M29)			
NS	0121L01404NG	SERVICE DOOR BACK, CONTROL (M2, M5, M6, M8, M9, M10, M11, M14, M20, M21, M22, M24)			
NS	0121L01403NG	SERVICE DOOR FRONT, CONTROL (M2, M5, M6, M8, M9, M10, M11, M14, M20, M21, M22, M24)			
NS	0130L00056	SHAFT, CUT (M2, M7, M11, M12, M13)			