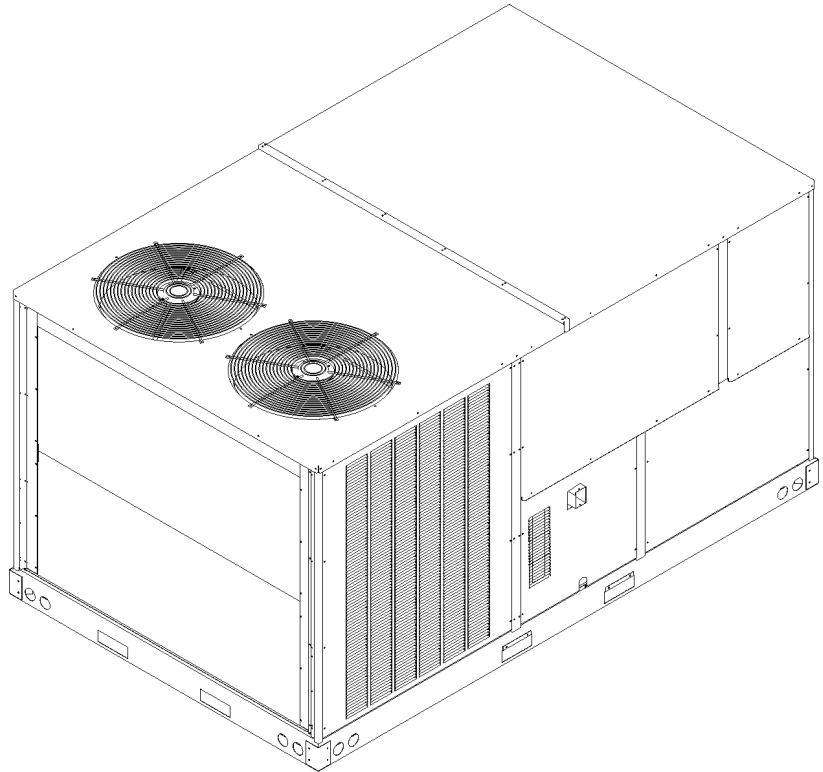


**Commercial 10 Ton 2-Speed Package Gas Unit**

DCG1202103VABQAB  
DCG1202103VASXAB  
DCG1202103VAXXAB  
DCG1202103VHDDAB  
DCG1202103VJXDAB  
DCG1202103VMDNAB  
DCG1202103VVDAAB  
DCG1202103VVSZAB  
DCG1202103VVXDAB  
DCG1202103VWXBAB  
DCG1202103VWYOAB  
DCG1202103VWXXAB  
DCG1202103VXSXAB  
DCG1202103VXXNAB  
DCG1202103VXXVAB  
DCG1202103VXXXAA  
DCG1202103VXXXAB  
DCG1202104VASGAC  
DCG1202104VAXXAC  
DCG1202104VVXXAC  
DCG1202104VWXMAB  
DCG1202104VXSGAC  
DCG1202104VXSVAC  
DCG1202104VXXXAA  
DCG1202104VXXXAB  
DCG1202104VXXXAC  
DCG1202107VHDAAB  
DCG1202107VHXAAB  
DCG1202107VXXXAA  
DCG1202107VXXXAB



This manual is to be used by qualified technicians only.

This manual replaces RP-D10100.

© 2013 - 2018 **DAIKIN COMPANY, L.P.** ♦ 5151 San Felipe St., Suite 500 ♦ Houston, TX 77056

# Important Information

---

## Index

Functional Parts List .....	3
Illustration and Parts .....	4 - 17

*Views shown are for parts illustrations only, not servicing procedures.*

### Text Codes:

AR - As Required

NA - Not Available

NS - Not Shown

00000000 - See Note

QTY - Quantity Example (QTY 3) (If Quantity not shown, Quantity = 1)

M - Model Example (M1) (If M Code not shown, then part is used on all Models)

### Expanded Model Nomenclature:

Example M1 - Model#1 M2 - Model#2 M3 - Model#3
---

Daikin Company, L.P. is not responsible for personal injury or property damage resulting from improper service. Review all service information before beginning repairs.

Warranty service must be performed by an authorized technician, using authorized factory parts. If service is required after the warranty expires, Daikin Company, L.P. also recommends contacting an authorized technician and using authorized factory parts.

Daikin Company, L.P. reserves the right to discontinue, or change at any time, specifications or designs without notice or without incurring obligations.

For assistance within the U.S.A. contact:

Equipment Support  
Daikin North America, LLC  
19001 Kermier Road  
Waller, Texas 77484  
855-770-5678-Telephone  
713-863-2382-Facsimile

For assistance outside the U.S.A. contact:

International Division  
Daikin North America, LLC  
19001 Kermier Road  
Waller, Texas 77484  
713-861-2500-Telephone  
713-863-2382-Facsimile

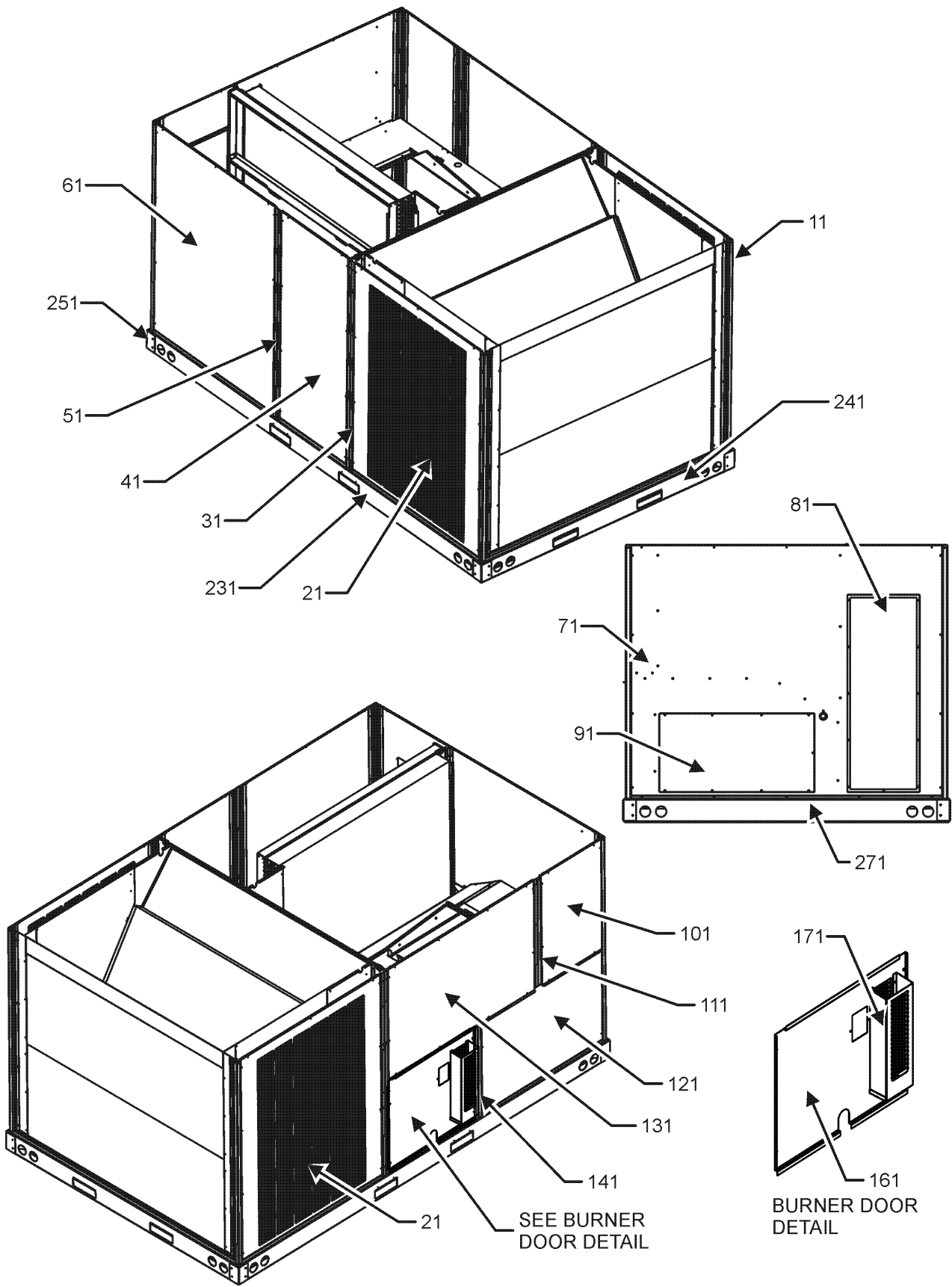
# Functional Parts

## Part

### No: Description:

Part No:	Description:	Part No:	Description:
0130M00025	24V RELAY	0130M00038	TERMINAL BOARD
03-78497	BLOWER WHEEL	0130M00144	TRANSFORMER (M6)
CAP100000370LA	CAPACITOR 10/370V (M1, M2, M3, M4, M5, M6, M7, M8, M9, M10, M11, M12, M13, M14, M15, M16, M17, M18, M19, M20, M21, M22, M23, M25, M26)	0130M00144	TRANSFORMER (M1, M2, M3, M4, M5, M6, M7, M8, M9, M10, M11, M12, M13, M14, M15, M16, M17)
CAP050000370LA	CAPACITOR 5/370V (M24, M29)	0130M00146	TRANSFORMER 480V TO 230V, 150VA (M18, M19, M20, M21, M22, M23, M24, M25, M26)
CAP050000440LA	CAPACITOR 5/440V (M27, M28, M30)	0130M00145	TRANSFORMER 480V TO 24V, 75VA (M18, M19, M20, M21, M22, M23, M24, M25, M26)
ZP51K5ETF5130	COMPRESSOR 51000, 208/230/60/3 (M1, M2, M3, M4, M5, M6, M7, M8, M9, M10, M11, M12, M13, M14, M15, M16, M17)	0130M00147	TRANSFORMER 575V TO 230V, 150VA (M27, M28, M29, M30)
ZP51K5ETFD130	COMPRESSOR 51000, 460/60/3 (M18, M19, M20, M21, M22, M23, M24, M25, M26)	0130M00148	TRANSFORMER 575V TO 24V, 75VA (M27, M28, M29, M30)
ZP51K5ETFE130	COMPRESSOR 51000, 575/60/3 (M27, M28, M29, M30)	0131L00002	VENT MOTOR
0131M00430	COND MOTOR 1/3 HP, 1 SP, 6 PL (M2, M3, M4, M5, M6, M7, M8, M9, M10, M11, M12, M13, M14, M16, M17)	<b>Expanded Model Nomenclature</b>	
B13400249	COND MOTOR 1/3 HP, 460V (M24)	M1 - DCG1202103VABQAB	
0131M00179	COND MOTOR 1/3 HP, 6 PL, 575V (M29)	M2 - DCG1202103VASXAB	
0131M00500	COND MOTOR 1/3 HP, OD, LAK (M27, M28, M30)	M3 - DCG1202103VAXXAB	
CONT3P025024V	CONTACTOR 25 AMP, 3P, 24V (QTY 4)	M4 - DCG1202103VHDDAB	
0130M00030	CUT-OUT SWITCH, HIGH PRESSURE	M5 - DCG1202103VJXDAB	
0130M00031	CUT-OUT SWITCH, HIGH PRESSURE	M6 - DCG1202103VMDNAB	
0130L00002	CUT-OUT SWITCH, LOW PRESSURE	M7 - DCG1202103VVDAAB	
0130L00003	CUT-OUT SWITCH, LOW PRESSURE	M8 - DCG1202103VVSZAB	
PCBCG100	DDC Controller (M6)	M9 - DCG1202103VVXDAB	
0130L00112	Duct Temp Sensor (M6)	M10 - DCG1202103VWXBAB	
0164L00017	FAN BELT, NOTCHED	M11 - DCG1202103VWXXOAB	
10625733	FAN BLADE 22" ALUM CCW (QTY 2)	M12 - DCG1202103VWXXAB	
0130F00010	FLAME SENSOR	M13 - DCG1202103VXSXAB	
0151L00000	GAS VALVE (36H)	M14 - DCG1202103VXXNAB	
PCBAG123	IGNITION BOARD, DSI INTEGRATED	M15 - DCG1202103VXXVAB	
20261709	IGNITOR	M16 - DCG1202103VXXXAA	
10123532	MANUAL RESET LIMIT 350°F	M17 - DCG1202103VXXXAB	
0131M00774	MOTOR, 1/3 HP, OD (M18, M19, M20, M22, M23, M25, M26)	M18 - DCG1202104VASGAC	
0131L00023	MOTOR, 2 HP BELT DRIVE 230V (M1, M2, M3, M4, M5, M6, M7, M8, M9, M10, M11, M12, M13, M14, M15, M16, M17)	M19 - DCG1202104VAXXAC	
0131L00029	MOTOR, 2 HP BELT DRIVE 460 V (M18, M19, M20, M21, M22, M23, M24, M25, M26)	M20 - DCG1202104VXXAC	
0131L00026	MOTOR, 2 HP BELT DRIVE 575 V (M27, M28, M29, M30)	M21 - DCG1202104VWXMAB	
0131L00064	Motor, Cond, 1/3 HP, 208/230V (M1, M15)	M22 - DCG1202104VXSGAC	
0131L00065	Motor, Cond, 1/3 HP, 460V (M21)	M23 - DCG1202104VXSAC	
0130L00108	OD Air Temp Sensor (M6)	M24 - DCG1202104VXXXAA	
0130L00105	PHASE MONITOR (M1)	M25 - DCG1202104VXXXAB	
16330-3	POWER BLOCK (M1, M2, M3, M4, M5, M7, M8, M9, M10, M11, M12, M13, M14, M15, M16, M17, M18, M19, M20, M21, M22, M23, M24, M25, M26, M27, M28, M29, M30)	M26 - DCG1202104VXXXAC	
16330-3	POWER BLOCK (M6)	M27 - DCG1202107VHDAAB	
11112501	PRESSURE SWITCH	M28 - DCG1202107VHXAAB	
B1370199	PRIMARY LIMIT SWITCH 190°F	M29 - DCG1202107VXXXAA	
20162904	PRIMARY LIMIT-TEMPERATURE CONTROL	M30 - DCG1202107VXXXAB	
0130M00242	RELAY, 24V (M1, M2, M3, M4, M5, M7, M8, M9, M10, M11, M12, M13, M14, M15, M16, M17, M18, M19, M20, M21, M22, M23, M24, M25, M26, M27, M28, M29, M30)		

# Cabinet Assembly



# Cabinet Assembly

Ref. Part No:	Description:	Ref. Part No:	Description:
<b>Image 1:</b>		<b>Expanded Model Nomenclature</b>	
11	0121L00065RFNG CORNER POST (QTY 4)	M1	- DCG1202103VABQAB
11	0121L01407RFNG CORNER POST (M4, M6, M7, M27)	M2	- DCG1202103VASXAB
21	0121L00511NG LOUVERED SIDE PANEL (QTY 2)	M3	- DCG1202103VAXXAB
31	0121L00738RFNG ROLL FORM SIDE POST (M1, M2, M3, M5, M8, M9, M10, M11, M12, M13, M14, M15, M16, M17, M18, M19, M20, M21, M22, M23, M24, M25, M26, M28, M29, M30)	M4	- DCG1202103VHDDAB
31	0121L01400RFNG ROLL FORM SIDE POST (M4, M6, M7, M27)	M5	- DCG1202103VJXDAB
41	0121L00737NG FILTER DOOR	M6	- DCG1202103VMDNAB
51	0121L00739RFNG FILTER DOOR POST	M7	- DCG1202103VVDAAB
51	0121L01432RFNG FILTER DOOR POST (M4, M6, M7, M27)	M8	- DCG1202103VVSZAB
61	0121L00510NG ECONOMIZER DOOR (M4, M6, M13, M14, M15, M16, M17, M22, M23, M24, M25, M26, M27, M28, M29, M30)	M9	- DCG1202103VVXDAB
71	0121L01364NG DUCT PANEL (M1, M2, M3, M8, M9, M13, M14, M15, M16, M17, M18, M19, M20, M22, M23, M24, M25, M26, M29, M30)	M10	- DCG1202103VWXBAB
71	0121L01365NG DUCT PANEL (M4, M5, M6, M10, M11, M12, M21, M27, M28)	M11	- DCG1202103VWXOAB
71	0121L01366NG DUCT PANEL (M7, M18, M22)	M12	- DCG1202103VWXXAB
81	0121L00082NG RETURN DUCT COVER	M13	- DCG1202103VXSXAB
91	0121L00099NG SUPPLY DUCT COVER	M14	- DCG1202103VXXNAB
101	0121L00974NG CONTROL DOOR	M15	- DCG1202103VXXVAB
111	0121L02517RFNG RF, CONTROL POST HINGED (M4, M6, M7, M27)	M16	- DCG1202103VXXXAA
111	0121L02303RFNG RF, PAINTED CONTROL POST (M1, M2, M3, M5, M8, M9, M10, M11, M12, M13, M14, M15, M16, M17, M18, M19, M20, M21, M22, M23, M24, M25, M26, M28, M29, M30)	M17	- DCG1202103VXXXAB
121	0121L00767NG ELECTRIC HEAT DOOR	M18	- DCG1202104VASGAC
131	0121L00763NG BLOWER DOOR	M19	- DCG1202104VAXXAC
141	0121L00765RFNG BURNER BOX POST	M20	- DCG1202104VXXAC
161	0121L00766NG BURNER DOOR	M21	- DCG1202104VXXMAC
171	0121L00129 DOOR RAIN SHIELD	M22	- DCG1202104VXSGAC
231	0121L01099RF RAIL, BASE SIDES (QTY 2)	M23	- DCG1202104VXSVAC
241	0121L00834RF RAIL, BASE ENDS	M24	- DCG1202104VXXXAA
251	0121G00301 RAIL CORNER BRACKET (QTY 4)	M25	- DCG1202104VXXXAB
271	0121L00071RF RAIL-BASE DUCT END	M26	- DCG1202104VXXXAC
NS	0121L00727 ECONOMIZER COVER (M7, M8, M9, M10, M11, M12, M20, M21)	M27	- DCG1202107VHDAAB
NS	0121L01310 ECONOMIZER COVER (M1, M2, M3, M5, M18, M19)	M28	- DCG1202107VHXAAB
NS	0164L00009 GASKET-RUBBER, CPOST (QTY 3)	M29	- DCG1202107VXXXAA
NS	0164L00011 GASKET-RUBBER, SIDE POST (QTY 4)	M30	- DCG1202107VXXXAB

# Top Panel and Tubing Assembly

IMAGE 1

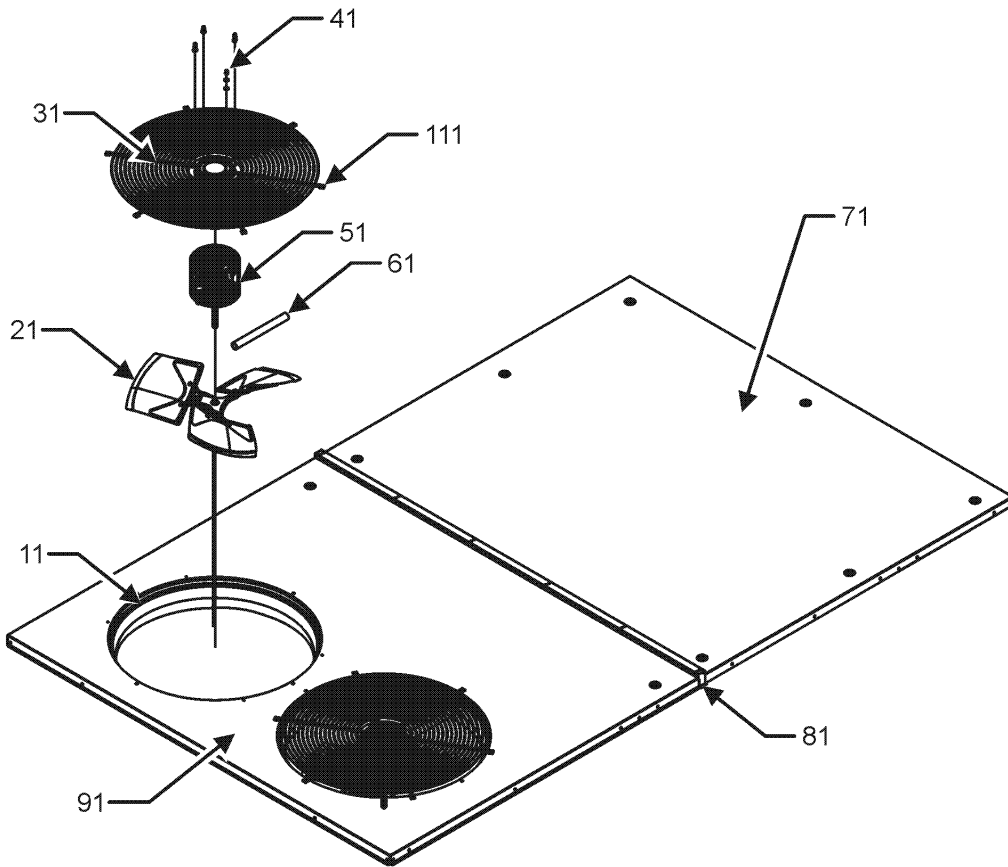
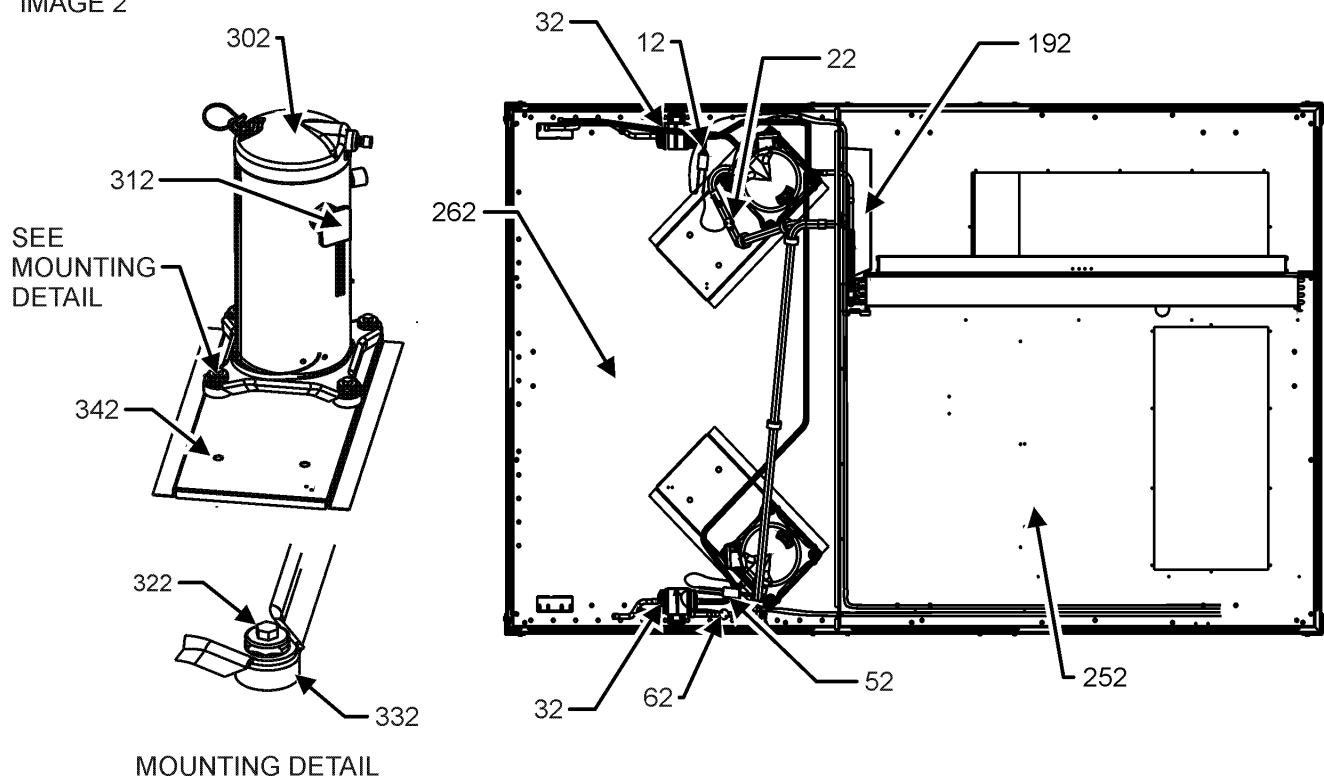


IMAGE 2

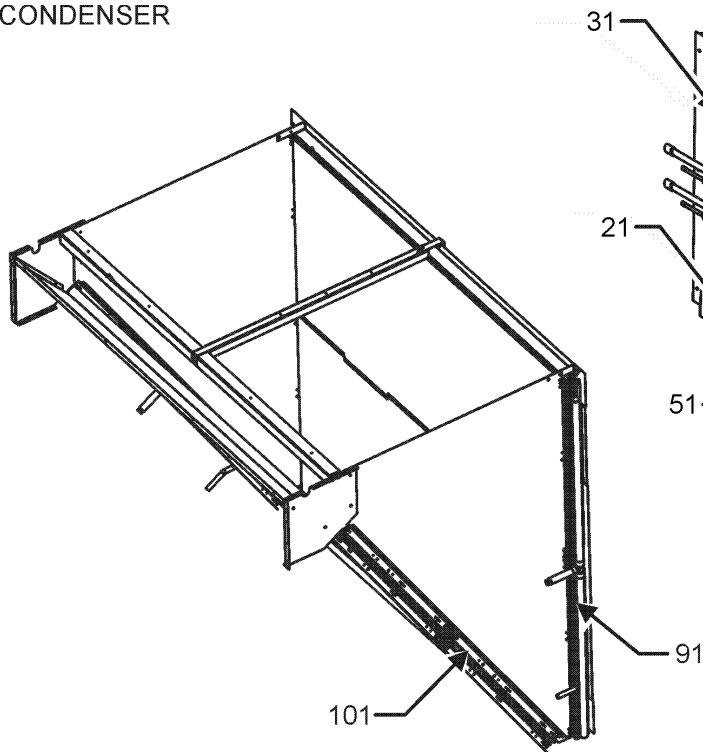


# Top Panel and Tubing Assembly

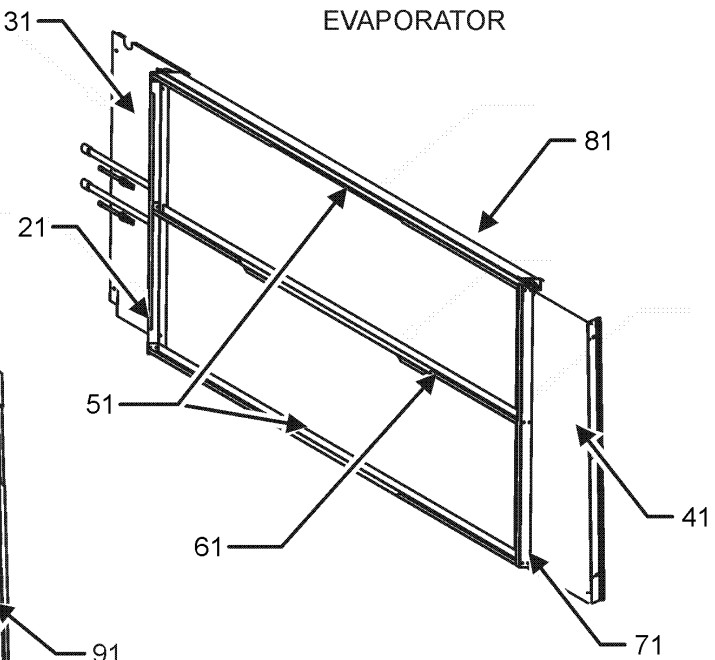
Ref. Part No: No:	Description:	Ref. Part No: No:	Description:
<b>Image 1:</b>		<b>Image 2:</b>	
11	0161L00000 VENTURI RING 22" (QTY 2)	NS	0121L00055 BRACKET-FORK BOARD (QTY 4)
21	10625733 FAN BLADE 22" ALUM CCW (QTY 2)	NS	0163M00175 CAP WITH O-RING (QTY 4)
31	0152G00003 FAN GRILLE (M24, M29)	<b>Expanded Model Nomenclature</b>	
31	0152G00000 FAN GRILLE, RAISED (M1, M2, M3, M4, M5, M6, M7, M8, M9, M10, M11, M12, M13, M14, M15, M16, M17, M18, M19, M20, M21, M22, M23, M25, M26, M27, M28, M30)	M1 - DCG1202103VABQAB	
41	0163M00006P ACORN NUT 5/16 HEX BLACK (QTY 8)	M2 - DCG1202103VASXAB	
51	0131M00430 COND MOTOR 1/3 HP, 1 SP, 6 PL (M2, M3, M4, M5, M6, M7, M8, M9, M10, M11, M12, M13, M14, M16, M17)	M3 - DCG1202103VAXXAB	
51	B13400249 COND MOTOR 1/3 HP, 460V (M24)	M4 - DCG1202103VHDDAB	
51	0131M00179 COND MOTOR 1/3 HP, 6 PL, 575V (M29)	M5 - DCG1202103VJXDAB	
51	0131M00500 COND MOTOR 1/3 HP, OD, LAK (M27, M28, M30)	M6 - DCG1202103VMDNAB	
51	0131M00774 MOTOR, 1/3 HP, OD (M18, M19, M20, M22, M23, M25, M26)	M7 - DCG1202103VVDAAB	
51	0131L00064 Motor, Cond, 1/3 HP, 208/230V (M1, M15)	M8 - DCG1202103VVSZAB	
51	0131L00065 Motor, Cond, 1/3 HP, 460V (M21)	M9 - DCG1202103VVXDAB	
61	0163M00386 CONDUIT-FLEXIBLE	M10 - DCG1202103VWXBAB	
71	0121L00497NG TOP INDOOR	M11 - DCG1202103VWXXOAB	
81	20455902 SPLICE GASKET .50 X .25 (QTY 5)	M12 - DCG1202103VWXXAB	
91	0121L01105NG TOP OUTDOOR	M13 - DCG1202103VXSXAB	
111	0163M00004 SCREW #10X3/4", BLACK (QTY 7)	M14 - DCG1202103VXXNAB	
NS	0259L00026 COND MOTOR HARNESS 460V (M21)	M15 - DCG1202103VXXVAB	
NS	0259L00028 COND MOTOR HARNESS 460V (M21)	M16 - DCG1202103VXXXAA	
NS	0259L00511 HARNESS COND MOTOR (M1, M2, M3, M4, M5, M6, M7, M8, M9, M10, M11, M12, M13, M14, M15, M16, M17, M18, M19, M20, M22, M23, M26, M27, M28, M29, M30)	M17 - DCG1202103VXXXAB	
NS	0259L00512 HARNESS COND MOTOR (M1, M2, M3, M4, M5, M6, M7, M8, M9, M10, M11, M12, M13, M14, M15, M16, M17, M18, M19, M20, M22, M23, M26, M27, M28, M29, M30)	M18 - DCG1202104VASGAC	
NS	0163M00005P WASHER, BLACK (.50 OD .218ID) (QTY 8)	M19 - DCG1202104VAXXAC	
<b>Image 2:</b>		M20 - DCG1202104VVXXAC	
12	0130M00031 CUT-OUT SWITCH, HIGH PRESSURE	M21 - DCG1202104VWXXMAC	
22	0130L00003 CUT-OUT SWITCH, LOW PRESSURE	M22 - DCG1202104VXSXGAC	
32	B1219204 BI-FLOW FILTER DRIER	M23 - DCG1202104VXSXVAC	
52	0130L00002 CUT-OUT SWITCH, LOW PRESSURE	M24 - DCG1202104VXXXAA	
62	0130M00030 CUT-OUT SWITCH, HIGH PRESSURE	M25 - DCG1202104VXXXAB	
192	0121L00359 SHIELD-EVAPORATOR DRIP (M16, M25, M29)	M26 - DCG1202104VXXXAC	
252	0121L00944 BASE PAN-INDOOR	M27 - DCG1202107VHDAAB	
262	0121L02129 BASE PAN, OUTDOOR	M28 - DCG1202107VHXAAB	
302	ZP51K5ETFD130 COMPRESSOR 51000, 208/230/60/3 (M1, M2, M3, M4, M5, M6, M7, M8, M9, M10, M11, M12, M13, M14, M15, M16, M17)	M29 - DCG1202107VXXXAA	
302	ZP51K5ETFD130 COMPRESSOR 51000, 460/60/3 (M18, M19, M20, M21, M22, M23, M24, M25, M26)	M30 - DCG1202107VXXXAB	
302	ZP51K5ETFE130 COMPRESSOR 51000, 575/60/3 (M27, M28, M29, M30)		
312	0159L00066 COMPRESSOR SCROLL HARNESS		
312	0159L00067 COMPRESSOR SCROLL HARNESS		
322	M0221641 TF SHOULDER SCREW (QTY 8)		
332	B1339533 COMPRESSOR GROMMET (QTY 8)		
342	0121L02128 COMPRESSOR MOUNTING PLATE (QTY 2)		
NS	B1373315 ACCESS FITTING (M1, M2, M3, M4, M5, M6, M7, M8, M9, M10, M11, M12, M13, M14, M15, M17, M18, M19, M20, M21, M22, M23, M24, M26, M27, M28, M30)		
NS	0141L00006X BOARD FORK (QTY 2)		

# Condenser, Evaporator & Partition Assy

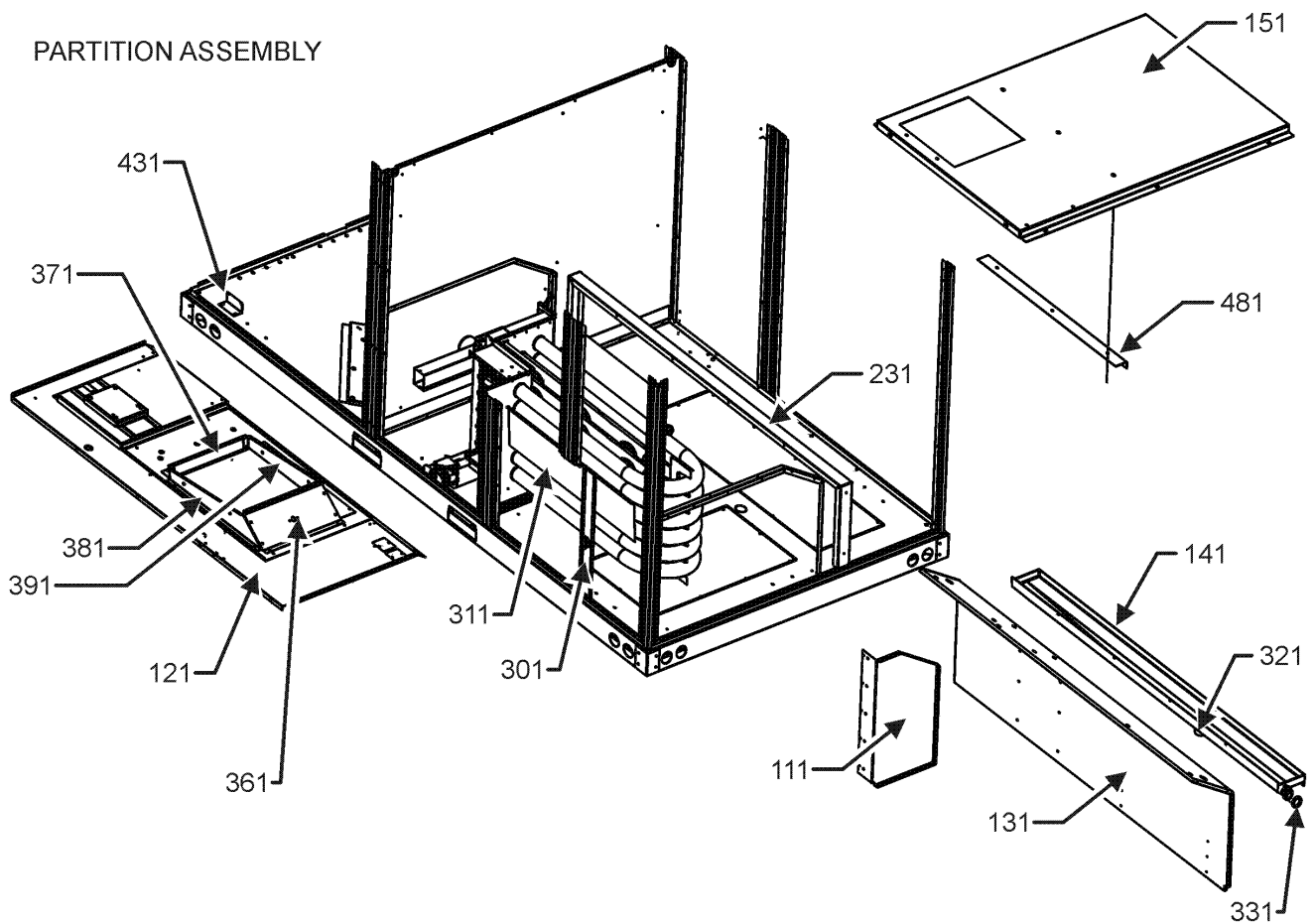
CONDENSER



EVAPORATOR



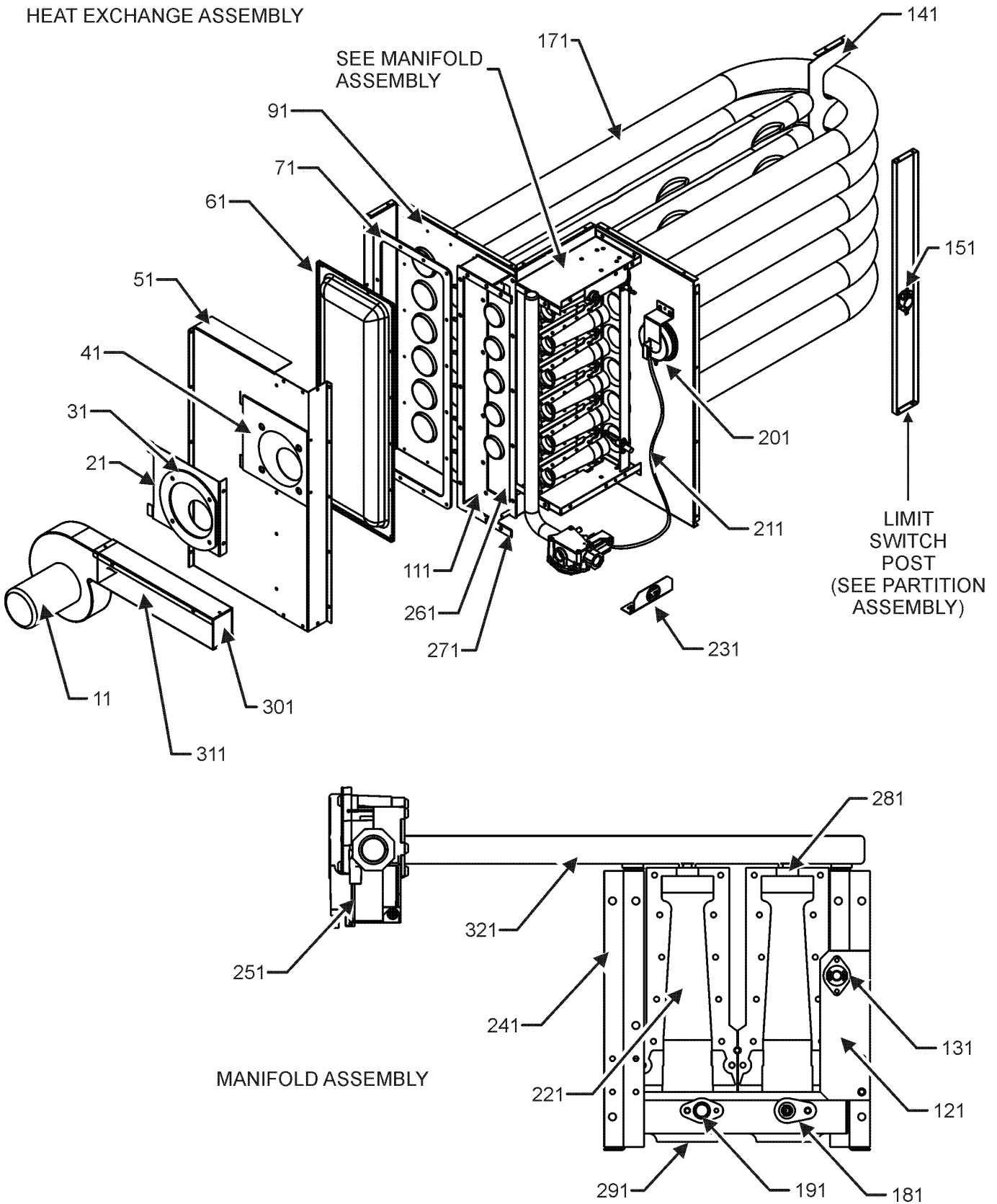
PARTITION ASSEMBLY



# Condenser, Evaporator & Partition Assy

Ref. Part No: No:	Description:	Ref. Part No: No:	Description:
<b>Image 1:</b>		<b>Expanded Model Nomenclature</b>	
21	0121L01257	ANGLE, FILTER VERTICAL	M1 - DCG1202103VABQAB
31	0121L00210	EVAP EXTENSION-RETURN SIDE	M2 - DCG1202103VASXAB
41	0121L00843	EVAP EXTENSION-HAIRPIN SIDE	M3 - DCG1202103VAXXAB
51	0121L00650	FILTER ANGLE-VERTICAL (RETURN SIDE)	M4 - DCG1202103VHDDAB
61	0121L00649	FILTER ANGLE - HORIZONTAL (QTY 2)	M5 - DCG1202103VJXDAB
71	0121L00358	FILTER ANGLE-VERTICAL (HAIRPIN SIDE)	M6 - DCG1202103VMDNAB
81	0202L00007	TUBING ASSY, EVAP COIL (M16, M24, M25, M29)	M7 - DCG1202103VVDAAB
81	0202L00085	TUBING ASSY, EVAP COIL (M1, M2, M3, M4, M5, M6, M7, M8, M9, M10, M11, M12, M13, M14, M15, M17, M18, M19, M20, M21, M22, M23, M26, M27, M28, M30)	M8 - DCG1202103VVSZAB
91	0201L00130	COND COIL ASSY, 5MM C1 (M16, M24, M25, M29)	M9 - DCG1202103VVXDAB
91	0201L00200	COND COIL ASSY, 5MM C1 (M1, M2, M3, M4, M5, M6, M7, M8, M9, M10, M11, M12, M13, M14, M15, M17, M18, M19, M20, M21, M22, M23, M26, M27, M28, M30)	M10 - DCG1202103VWXBAB
101	0201L00136	COND COIL ASSY, 5MM C2 (M16, M24, M25, M29)	M11 - DCG1202103VWXOAB
101	0201L00201	COND COIL ASSY, 5MM C2 (M1, M2, M3, M4, M5, M6, M7, M8, M9, M10, M11, M12, M13, M14, M15, M17, M18, M19, M20, M21, M22, M23, M26, M27, M28, M30)	M12 - DCG1202103VWXXAB
111	0121L00522	HEAT EXCHANGER BLOCK-OFF	M13 - DCG1202103VXSXAB
121	0121L02500	DECK-BLOWER	M14 - DCG1202103VXXNAB
131	0121L00374	DECK SIDE CHANNEL	M15 - DCG1202103VXXVAB
141	0161L00002	DRAIN PAN	M16 - DCG1202103VXXXAA
151	0121L00366	BASE-HEAT EXCHANGER	M17 - DCG1202103VXXXAB
231	0121L00508	DRAIN PAN SUPPORT	M18 - DCG1202104VASGAC
301	0121L00093	POST-LIMIT SWITCH	M19 - DCG1202104VAXXAC
311	0121L00136	BAFFLE-BLOWER	M20 - DCG1202104VVXXAC
321	0163L00071	DRAIN PAN PLUG	M21 - DCG1202104VWXXMAC
331	0154L00009	DRAIN PAN GASKET	M22 - DCG1202104VXSGAC
361	0121L00168	BLOWER TRANSITION, RH END	M23 - DCG1202104VXSVAC
371	0121L00169	BLOWER TRANSITION, LH END	M24 - DCG1202104VXXXAA
381	0121L00092	BLOWER TRANSITION, FRONT	M25 - DCG1202104VXXXAB
391	0121L00094	BLOWER TRANSITION, BACK	M26 - DCG1202104VXXXAC
431	0121L00914	BRACE-CONDENSER (QTY 2)	M27 - DCG1202107VHDAAB
481	0121L00143	ANGLE-HT BASE BRACE	M28 - DCG1202107VHXAAB
NS	0160L00175	AIR FILTER 16 X 24 X 2 (QTY 4)	M29 - DCG1202107VXXXAA
NS	0121L01398	DECK, SUPPORT BLOWER (M4, M6, M7, M27)	M30 - DCG1202107VXXXAB
NS	0121L01402	DECK, SUPPORT CONTROL (M4, M6, M7, M27)	
NS	0121L00321	SMOKE DETECTOR COVER (QTY 2)	

# Heat Exchange Assembly

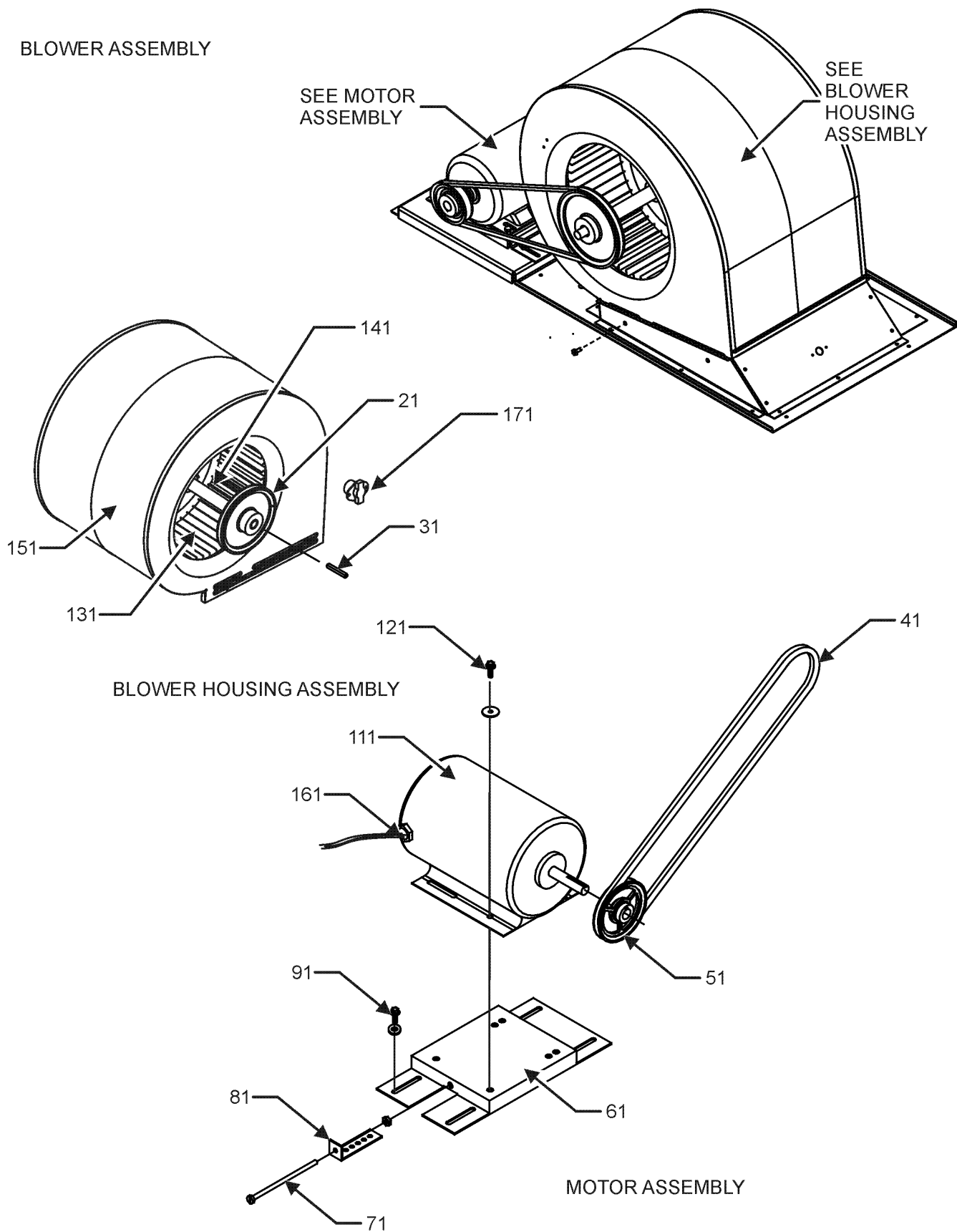


# Heat Exchange Assembly

Ref. Part No: No:	Description:	Ref. Part No: No:	Description:
<b>Image 1:</b>		<b>Expanded Model Nomenclature</b>	
11	0131L00002 VENT MOTOR	M1	DCG1202103VABQAB
21	0121L00080 MOUNTING PLATE-ID BLOWER	M2	DCG1202103VASXAB
31	0154L00007 GASKET, BLOWER/ORIFICE PLATE	M3	DCG1202103VAXXAB
41	0154L00006 GASKET, COLLECTOR/ORIFICE PLATE	M4	DCG1202103VHDDAB
51	0121L00077 COLLECTOR BOX COVER	M5	DCG1202103VJXDAB
61	0121L00072 REAR COVER, HEAT EXCHANGER	M6	DCG1202103VMDNAB
71	0154L00010 REAR COVER GASKET, HEAT EXCHANGER	M7	DCG1202103VVDAAB
91	0121L01434 PANEL-HT TUBES, 6 BURNER	M8	DCG1202103VVSZAB
111	0121L00076 COLLECTOR BOX CHANNEL	M9	DCG1202103VVXDAB
121	0121L00323 FLAME ROLLOUT BRACKET	M10	DCG1202103VWXBAB
131	10123532 MANUAL RESET LIMIT 350°F	M11	DCG1202103VWXXOAB
141	0121L01436 SUPPORT-HT TUBES 6	M12	DCG1202103VWXXAB
151	B1370199 PRIMARY LIMIT SWITCH 190°F	M13	DCG1202103VXSXAB
171	0270L00171 HEAT EXCHANGER ASSY 6B (M2, M8, M13, M18, M22, M23)	M14	DCG1202103VXXNAB
171	0270L00752 PART TUBE ASSY 6B (M1, M3, M4, M5, M6, M7, M9, M10, M11, M12, M14, M15, M16, M17, M19, M20, M21, M24, M25, M26, M27, M28, M29, M30)	M15	DCG1202103VXXVAB
181	0130F00010 FLAME SENSOR	M16	DCG1202103VXXXAA
191	20261709 IGNITOR	M17	DCG1202103VXXXAB
201	11112501 PRESSURE SWITCH	M18	DCG1202104VASGAC
211	A3468601 PRESSURE SWITCH HOSE	M19	DCG1202104VAXXAC
221	0163L00000 BECKETT BURNER (QTY 6)	M20	DCG1202104VXXAC
231	0121L00147 PIPE BRACKET-GAS VALVE	M21	DCG1202104VXXMAC
241	0121G00268 BRACKET-BURNER TOP/BOT (QTY 2)	M22	DCG1202104VXSGAC
251	0151L00000 GAS VALVE (36H)	M23	DCG1202104VXSVAC
261	0154L00011 INNER GASKET, COLLECTOR BOX	M24	DCG1202104VXXXAA
271	0154L00012 OUTER GASKET, COLLECTOR BOX	M25	DCG1202104VXXXAB
281	0163L00007 ORIFICE #34 DRILL (QTY 6)	M26	DCG1202104VXXXAC
291	0121L00075 BURNER BRACKET 6B	M27	DCG1202107VHDAAB
301	0163L00006 FLUE SCREEN	M28	DCG1202107VHXAAB
311	0121L00049 HEAT EXCHANGER FLUE (QTY 2)	M29	DCG1202107VXXXAA
321	0163L00010 MANIFOLD - 6 BRNR	M30	DCG1202107VXXXAB
NS	0121L00130NG FLUE COLLAR		
NS	B1392609 SEAL STRIP, RED, 1/8 X 1/2 X 100 (QTY 3)		

# Blower Assembly

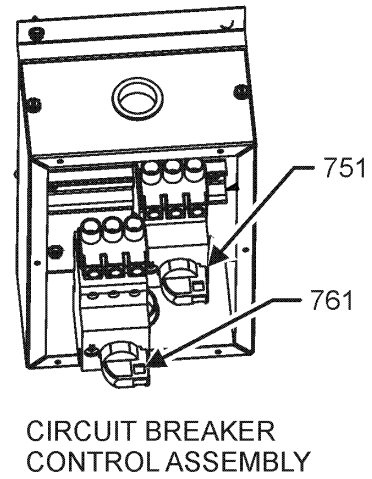
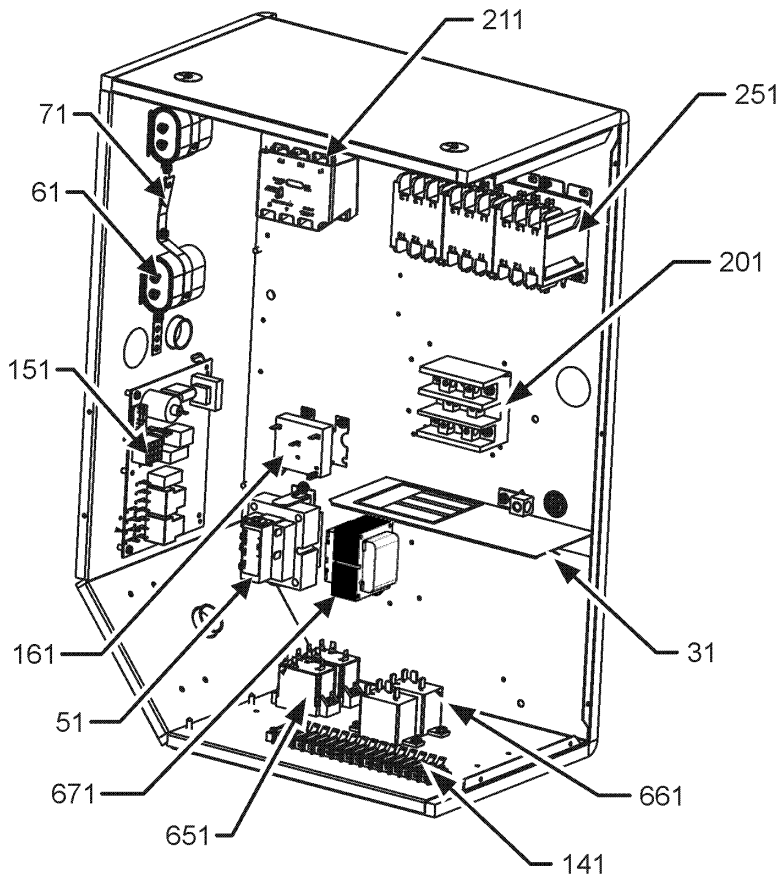
## BLOWER ASSEMBLY



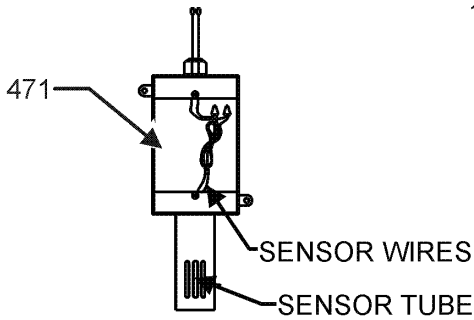
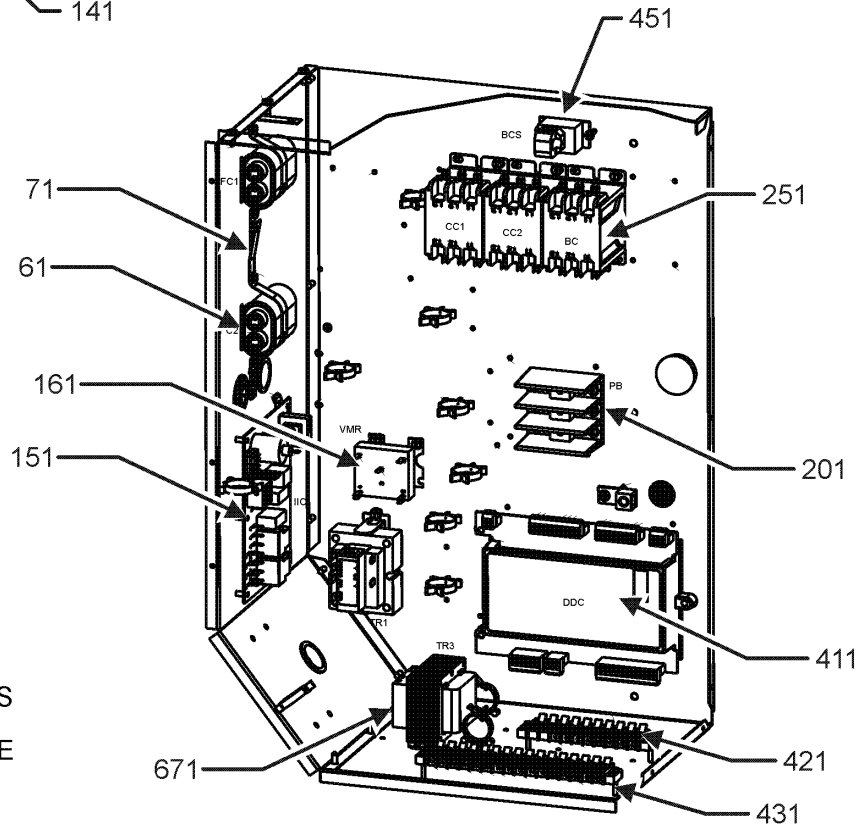
# Blower Assembly

Ref. Part No: No:	Description:	Ref. Part No: No:	Description:
<i>Image 1:</i>		<b>Expanded Model Nomenclature</b>	
21	0163L00134 SHEAVE, FIXED AK74H	M1	- DCG1202103VABQAB
31	B1398604 STEEL KEY (000158812) 2.0"	M2	- DCG1202103VASXAB
41	0164L00017 FAN BELT, NOTCHED	M3	- DCG1202103VAXXAB
51	0163L00012 VARIABLE PITCH SHEAVE VL40	M4	- DCG1202103VHDDAB
61	0121L01504 MOTOR BASE	M5	- DCG1202103VJXDAB
71	0163M00045 BOLT 1/4-20 X 4"	M6	- DCG1202103VMDNAB
81	3225000F BELT TIGHTENER ANGLE	M7	- DCG1202103VVDAAAB
91	B1446707 SCREW 5/16-18 X 1" (QTY 4)	M8	- DCG1202103VVSZAB
111	0131L00023 MOTOR, 2 HP BELT DRIVE 230V (M1, M2, M3, M4, M5, M6, M7, M8, M9, M10, M11, M12, M13, M14, M15, M16, M17)	M9	- DCG1202103VVXDAB
111	0131L00029 MOTOR, 2 HP BELT DRIVE 460 V (M18, M19, M20, M21, M22, M23, M24, M25, M26)	M10	- DCG1202103VWXBAB
111	0131L00026 MOTOR, 2 HP BELT DRIVE 575 V (M27, M28, M29, M30)	M11	- DCG1202103VWXOAB
121	B1393738 BOLT 1/4-20 X 3/4" (QTY 8)	M12	- DCG1202103VWXXAB
131	03-78497 BLOWER WHEEL	M13	- DCG1202103VXSXAB
141	04-11526 BLOWER SHAFT	M14	- DCG1202103VXXNAB
151	04-01526 BLOWER HOUSING	M15	- DCG1202103VXXVAB
161	0259L00160 HARNESS-BELT DRIVE 2 SP MOTOR	M16	- DCG1202103VXXXAA
171	20162904 PRIMARY LIMIT-TEMPERATURE CONTROL	M17	- DCG1202103VXXXAB
NS	04-02196 BLOWER BEARING & FRAME ASSY	M18	- DCG1202104VASGAC
		M19	- DCG1202104VAXXAC
		M20	- DCG1202104VXXAC
		M21	- DCG1202104VXXMAC
		M22	- DCG1202104VXXGAC
		M23	- DCG1202104VXXSVAC
		M24	- DCG1202104VXXXAA
		M25	- DCG1202104VXXXAB
		M26	- DCG1202104VXXXAC
		M27	- DCG1202107VHDAAB
		M28	- DCG1202107VHXAAB
		M29	- DCG1202107VXXXAA
		M30	- DCG1202107VXXXAB

# Control Box Assembly



CONTROL BOX FOR MODELS WITH DDC CONTROL



# Control Box Assembly

Ref. Part No:	No:	Description:	Ref. Part No:	No:	Description:
<i>Image 1:</i>			<i>Image 1:</i>		
31	0121G00491	VOLTAGE BARRIER	NS	0259L00382	HARN, CNTL PWR, DDC (M6)
51	0130M00144	TRANSFORMER (M1, M2, M3, M4, M5, M6, M7, M8, M9, M10, M11, M12, M13, M14, M15, M16, M17)	NS	0259L00420	HARN, IIC, DDC 2 SP (M6)
51	0130M00145	TRANSFORMER 480V to 24V, 75VA (M18, M19, M20, M21, M22, M23, M24, M25, M26)	NS	0259L00399	HARN, PWR XFMR CNTL (M6)
51	0130M00148	TRANSFORMER 480V to 24V, 75VA (M18, M19, M20, M21, M22, M23, M24, M25, M26)	NS	0259L00419	HARN, RELAY OUTPUT, DDC 2 SP (M6)
51	0130M00148	TRANSFORMER 575V to 24V, 75VA (M27, M28, M29, M30)	NS	0259L00496	HARN, RELAY OUTPUT, DDC 2 SP (M6)
61	CAP100000370LA	CAPACITOR 10/370V (M1, M2, M3, M4, M5, M6, M7, M8, M9, M10, M11, M12, M13, M14, M15, M16, M17, M18, M19, M20, M21, M22, M23, M25, M26)	NS	0259L00160	HARN, RELAY OUTPUT, DDC 2 SP (M6)
61	CAP050000370LA	CAPACITOR 5/370V (M24, M29)	NS	0259L00092	HARN, RELAY OUTPUT, DDC 2 SP (M6)
61	CAP050000440LA	CAPACITOR 5/440V (M27, M28, M30)	NS	0259L00092	HARN, RELAY OUTPUT, DDC 2 SP (M6)
71	20520901	CAPACITOR STRAP (QTY 2)	NS	0130L00107	ROOM SENSOR (M6)
141	0130M00038	TERMINAL BOARD	NS	0259L00428	WIRE ASSY (M1)
151	PCBAG123	IGNITION BOARD, DSI INTEGRATED	NS	0259L00447	WIRE ASSY (M1)
161	0130M00025	24V RELAY	NS	0259L00494	WIRE HARN, SMOKE DET MED DDC (M6)
201	16330-3	POWER BLOCK (M1, M2, M3, M4, M5, M7, M8, M9, M10, M11, M12, M13, M14, M15, M16, M17, M18, M19, M20, M21, M22, M23, M24, M25, M26, M27, M28, M29, M30)	NS	0259L00502	WIRE HARNESS
201	16330-3	POWER BLOCK (M6)	NS	0259L00503	WIRE HARNESS (M6)
211	0130L00105	PHASE MONITOR (M1)	NS	0259L00148	WIRE HARNESS ASSY
251	CONT3P025024V	CONTACTOR 25 AMP, 3P, 24V (QTY 4)	NS	0259L00149	WIRE HARNESS ASSY
411	PCBCG100	DDC Controller (M6)	NS	0259L00152	WIRE HARNESS ASSY
421	0130M00274	TERMINAL BOARD (M6)	NS	0259L00166	WIRE HARNESS, ECONOMIZER (M16, M24, M25, M29)
431	0130M00275	TERMINAL BOARD (M6)	NS	0259L00192	WIRE HARNESS, ECONOMIZER (M1, M2, M3, M4, M5, M6, M7, M8, M9, M10, M11, M12, M13, M14, M15, M17, M18, M19, M20, M21, M22, M23, M26, M27, M28, M30)
451	0259L00368	CURRENT SWITCH WITH TERMS (M6)	NS	0259L00090	WIRE HARNESS-SMOKE DETECTOR (M8, M11)
471	0130L00108	OD Air Temp Sensor (M6)			
651	10135604	RELAY (M1, M2, M3, M4, M5, M7, M8, M9, M10, M11, M12, M13, M14, M15, M16, M17, M18, M19, M20, M21, M22, M23, M24, M25, M26, M27, M28, M29, M30)			
661	0130M00242	RELAY, 24V (M1, M2, M3, M4, M5, M7, M8, M9, M10, M11, M12, M13, M14, M15, M16, M17, M18, M19, M20, M21, M22, M23, M24, M25, M26, M27, M28, M29, M30)			
671	0130M00144	TRANSFORMER (M6)			
671	0130M00146	TRANSFORMER 480V TO 230V, 150VA (M18, M19, M20, M21, M22, M23, M24, M25, M26)			
671	0130M00147	TRANSFORMER 575V TO 230V, 150VA (M27, M28, M29, M30)			
751	0130L00070	ROTARY MANUAL MOTOR PROTECTOR (M27, M28, M29, M30)			
751	0130L00082	ROTARY MANUAL MOTOR PROTECTOR (M18, M19, M20, M21, M22, M23, M24, M25, M26)			
751	0130L00084	ROTARY MANUAL MOTOR PROTECTOR (M1, M2, M3, M4, M5, M6, M7, M8, M9, M10, M11, M12, M13, M14, M15, M16, M17)			
761	0130L00070	ROTARY MANUAL MOTOR PROTECTOR (M18, M19, M20, M21, M22, M23, M24, M25, M26, M27, M28, M29, M30)			
761	0130L00082	ROTARY MANUAL MOTOR PROTECTOR (M1, M2, M3, M4, M5, M6, M7, M8, M9, M10, M11, M12, M13, M14, M15, M16, M17)			
NS	0259L00153	2 SPEED CONTROL HARNESS			
NS	0259L00155	2 SPEED RELAY HARNESS			
NS	0259L00161	CIRCUIT BREAKER HARNESS			
NS	0259L00161	CIRCUIT BREAKER HARNESS			
NS	0130L00112	Duct Temp Sensor (M6)			
NS	0259L00401	HARN, BINARY INPUT, DDC (M6)			

# Control Box Assembly

Ref. Part

No: No:

Description:

Ref. Part

No: No:

Description:

---

Expanded Model Nomenclature

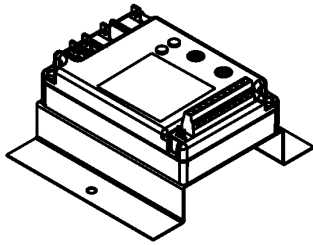
M1 - DCG1202103VABQAB
M2 - DCG1202103VASXAB
M3 - DCG1202103VAXXAB
M4 - DCG1202103VHDDAB
M5 - DCG1202103VJXDAB
M6 - DCG1202103VMDNAB
M7 - DCG1202103VVDAAB
M8 - DCG1202103VVSZAB
M9 - DCG1202103VVXDAB
M10 - DCG1202103VWXBAB
M11 - DCG1202103VWXOAB
M12 - DCG1202103VWXXAB
M13 - DCG1202103VXSXAB
M14 - DCG1202103VXXNAB
M15 - DCG1202103VXXVAB
M16 - DCG1202103VXXXAA
M17 - DCG1202103VXXXAB
M18 - DCG1202104VASGAC
M19 - DCG1202104VAXXAC
M20 - DCG1202104VVXXAC
M21 - DCG1202104VWXMAC
M22 - DCG1202104VXSGAC
M23 - DCG1202104VXSVAC
M24 - DCG1202104VXXXAA
M25 - DCG1202104VXXXAB
M26 - DCG1202104VXXXAC
M27 - DCG1202107VHDAAB
M28 - DCG1202107VHXAAB
M29 - DCG1202107VXXXAA
M30 - DCG1202107VXXXAB

# Accessory Parts List

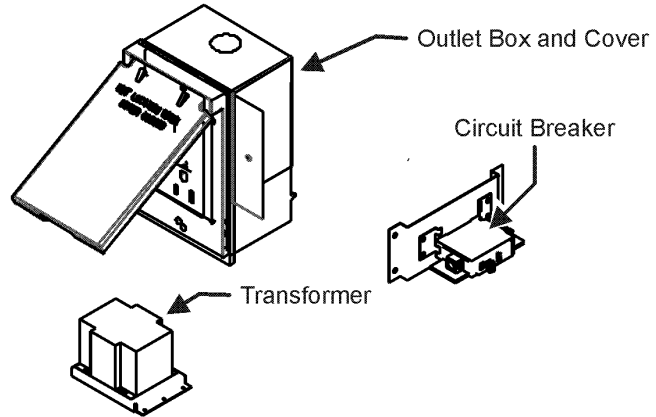
## ACCESSORY PARTS LIST

NOTE: NOT ALL OPTIONS AVAILABLE FOR ALL PRODUCTS

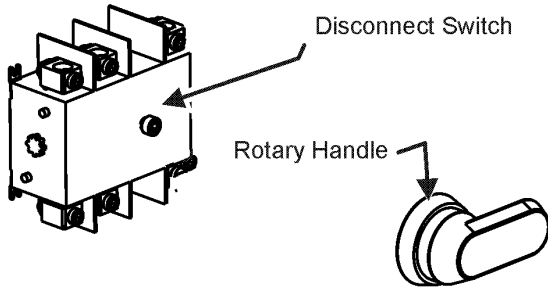
### 1 LOW AMBIENT KITS



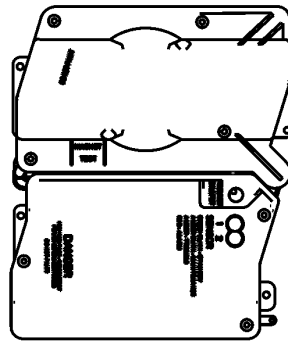
### 2 GFCI CONVENIENCE OUTLET



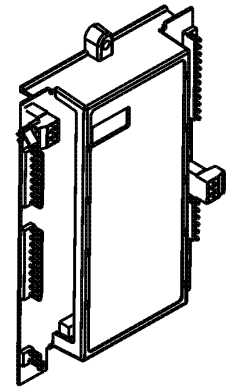
### 3 DISCONNECT MODULE (NON-FUSED)



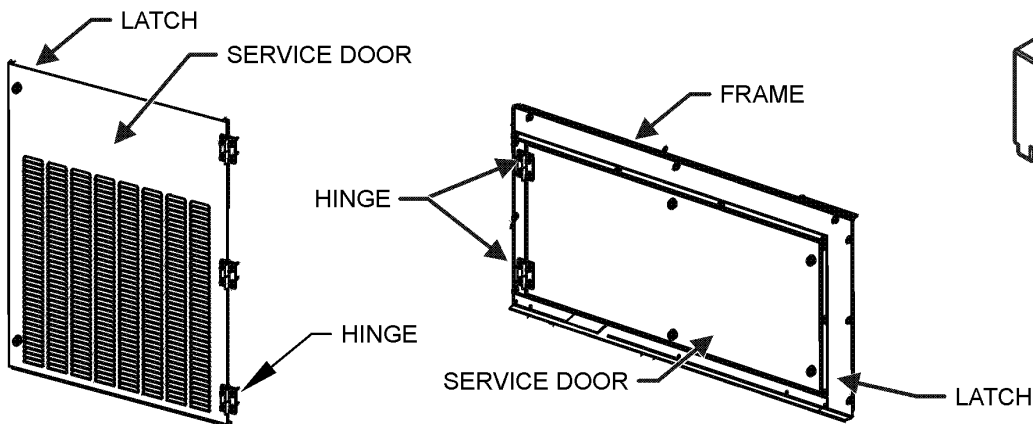
### 4 SMOKE DETECTORS



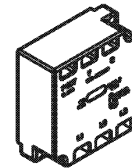
### 5 DDC CONTROL



### 6 HINGED DOOR ASSEMBLIES



### 7 PHASE MONITOR



# Accessory Parts List

Ref. Part No:	No:	Description:	Ref. Part No:	No:	Description:
<i>Image 1:</i>			<b>Expanded Model Nomenclature</b>		
NS	DDNECNJ90150B	7.5-12.5 TON DFLOW ECON (M7, M8, M9, M10, M11, M12, M20, M21)	M1 - DCG1202103VABQAB		
NS	1036610B	7.5-12.5 TON DFLOW ECONOMIZER (M1, M2, M3, M5, M18, M19)	M2 - DCG1202103VASXAB		
NS	0121L01395NG	BLOWER SERVICE DOOR, BACK (M4, M6, M7, M27)	M3 - DCG1202103VAXXAB		
NS	0121L01394NG	BLOWER SERVICE DOOR, FRONT (M4, M6, M7, M27)	M4 - DCG1202103VHDDAB		
NS	0121L00316	BRACKET-CONV OUTLET MOUNT (M1, M6, M7, M10, M11, M14, M18, M21, M22, M27, M28)	M5 - DCG1202103VJXDAB		
NS	0121L00768	BRACKET-SMOKE DETECTOR (M6, M8, M11)	M6 - DCG1202103VMDNAB		
NS	0130M00065	CIRCUIT BREAKER, CONVENIENCE OUTLET (M1, M6, M10, M11, M14, M21)	M7 - DCG1202103VVDAAB		
NS	0121L00973NG	DISCONNECT SWITCH COVER (M4, M5, M6, M10, M11, M12, M21, M27, M28)	M8 - DCG1202103VVSZAB		
NS	0121L01397NG	DOOR FRAME, BLOWER (M4, M6, M7, M27)	M9 - DCG1202103VVXDAB		
NS	0121L01406NG	DOOR FRAME, CONTROL (M4, M6, M7, M27)	M10 - DCG1202103VWXBAB		
NS	0130L00012	GANG BOX-GFCI OUTLET (M1, M6, M7, M10, M11, M14, M18, M21, M22, M27, M28)	M11 - DCG1202103VWXXOAB		
NS	0130L00039	HANDLE, ROTARY (M4, M5, M12)	M12 - DCG1202103VWXXAB		
NS	0163M00307	HINGE, LEFT HAND (M4, M6, M7, M27)	M13 - DCG1202103VXSXAB		
NS	0163M00308	HINGE, RIGHT HAND (M4, M6, M7, M27)	M14 - DCG1202103VXXNAB		
NS	0163M00322	LATCH (M4, M6, M7, M27)	M15 - DCG1202103VXXVAB		
NS	0130M00059	LOW AMBIENT KIT (M1, M15, M21)	M16 - DCG1202103VXXXAA		
NS	LAKT03	LOW AMBIENT KIT (M23)	M17 - DCG1202103VXXXAB		
NS	0121L02220NG	PNT, DOOR FRAME FILTER (M4, M6, M7, M27)	M18 - DCG1202104VASGAC		
NS	0121L02223NG	PNT, SERVICE DOOR BACK FILTER (M4, M6, M7, M27)	M19 - DCG1202104VAXXAC		
NS	0121L02218NG	PNT, SERVICE DOOR FRONT FILTER (M4, M6, M7, M27)	M20 - DCG1202104VVXXAC		
NS	0161G00012	POWER OUTLET BOX (M1, M6, M7, M10, M11, M14, M18, M21, M22, M27, M28)	M21 - DCG1202104VWXXMAB		
NS	0130L00103	RECEPTACLE-GFCI OUTLET (M1, M6, M7, M10, M11, M14, M18, M21, M22, M27, M28)	M22 - DCG1202104VXSGAC		
NS	0121L01404NG	SERVICE DOOR BACK, CONTROL (M4, M6, M7, M27)	M23 - DCG1202104VXSVAC		
NS	0121L01403NG	SERVICE DOOR FRONT, CONTROL (M4, M6, M7, M27)	M24 - DCG1202104VXXXAA		
NS	0130L00056	SHAFT, CUT (M6)	M25 - DCG1202104VXXXAB		
NS	0130L00057	SHAFT, CUT (M4, M5, M12)	M26 - DCG1202104VXXXAC		
NS	0130L00049	SHAFT, DISCONNECT (M4, M5, M6, M10, M11, M12, M21, M27, M28)	M27 - DCG1202107VHDAAB		
NS	D4120	SMOKE DETECTOR, PHOTO 4WIRE (M6, M8, M11)	M28 - DCG1202107VHXAAB		
NS	D4S	SMOKE DETECTOR, SENSOR ONLY (M8, M11)	M29 - DCG1202107VXXXAA		
NS	0130L00027	SWITCH-DISCONNECT 100A (M6)	M30 - DCG1202107VXXXAB		
NS	0130L00046	SWITCH-DISCONNECT 60A (M4, M5, M12)			
NS	0130M00061	TRANSFORMER, CONVENIENCE OUTLET (M1, M6, M10, M11, M14, M21)			