

**Commercial 7.5 / 8.5 Ton 2-Speed Package Gas Units**

DCG0902107VASAAA  
DCG0902103V1DDAA  
DCG0902103VHDAAA  
DCG0902103VHDDAA  
DCG0902103VHXAAA  
DCG0902103VHXBAA  
DCG0902103VHXZAA  
DCG0902103VRLTAA  
DCG0902103VVXZAA  
DCG0902103VVDUJAA  
DCG0902103VVSNA  
DCG0902103VWXBAA  
DCG0902103VWXNAA  
DCG0902103VWXXAA  
DCG0902103VXDXAA  
DCG0902103VXSXAA  
DCG0902103VXXAAA  
DCG0902103VXXNAA  
DCG0902103VXXXAA  
DCG0902104VFDDAA  
DCG0902104VHSNAA  
DCG0902104VHXBAA  
DCG0902104VRXDAA  
DCG0902104VWXJAA  
DCG0902104VXSXAA  
DCG0902104VXXXAA  
DCG0902107VXXXAA  
DCG1022103VXXXAA  
DCG1022104VXXXAA  
DCG1022107VXXXAA



This manual is to be used by qualified technicians only.

This manual replaces RP-D1048K.

# Important Information

---

## Index

Functional Parts List .....	3
Illustration and Parts .....	4 - 17

*Views shown are for parts illustrations only, not servicing procedures*

### Text Codes:

AR - As Required

NA - Not Available

NS - Not Shown

00000000 - See Note

QTY - Quantity Example (QTY 3) (If Quantity not shown, Quantity = 1)

M - Model Example (M1) (If M Code not shown, then part is used on all Models)

### Expanded Model Nomenclature:

Example M1 - Model#1 M2 - Model#2 M3 - Model#3
---

Daikin Company, L.P. is not responsible for personal injury or property damage resulting from improper service. Review all service information before beginning repairs.

Warranty service must be performed by an authorized technician, using authorized factory parts. If service is required after the warranty expires, Daikin Company, L.P. also recommends contacting an authorized technician and using authorized factory parts.

Daikin Company, L.P. reserves the right to discontinue, or change at any time, specifications or designs without notice or without incurring obligations.

For assistance within the U.S.A. contact:

Equipment Support  
Daikin North America, LLC  
19001 Kermier Road  
Waller, Texas 77484  
855-770-5678-Telephone  
713-863-2382-Facsimile

For assistance outside the U.S.A. contact:

International Division  
Daikin North America, LLC  
19001 Kermier Road  
Waller, Texas 77484  
713-861-2500-Telephone  
713-863-2382-Facsimile

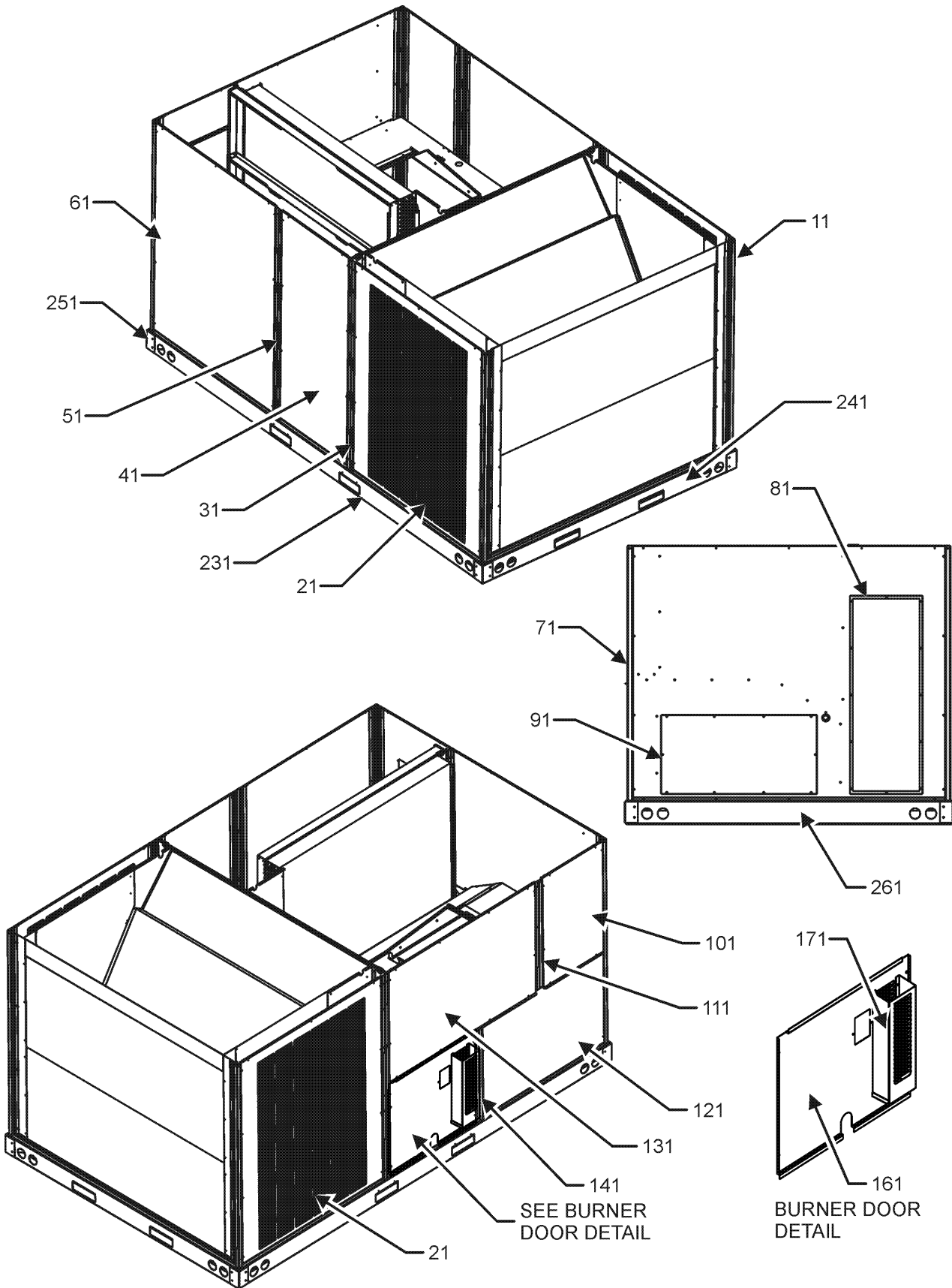
# Functional Parts

## Part

### No: Description:

Part No:	Description:	Part No:	Description:
0130M00025	24V RELAY	0130M00038	TERMINAL BOARD (M1, M2, M3, M4, M5, M7, M8, M9, M10, M11, M12, M13, M14, M15, M16, M17, M18, M20, M21, M23, M24, M25, M26, M27, M28, M29, M30)
03-77429	BLOWER WHEEL	0130M00144	TRANSFORMER (M1, M2, M3, M4, M5, M6, M7, M8, M9, M10, M11, M12, M13, M14, M15, M16, M17, M18, M28)
CAP030000440LA	CAPACITOR 3/440V (M26, M27, M30)	0130M00144	TRANSFORMER (M1, M2, M3, M4, M5, M6, M7, M8, M9, M10, M11, M12, M13, M14, M15, M16, M17, M18, M28)
CAP050000370LA	CAPACITOR 5/370V (M1, M2, M3, M4, M5, M6, M7, M8, M9, M10, M11, M12, M13, M14, M15, M16, M17, M18, M28)	0130M00146	TRANSFORMER 480V TO 230V, 150VA (M19, M20, M21, M22, M23, M24, M25, M29)
CAP075000370LA	CAPACITOR 7.5/370V (M19, M20, M21, M22, M23, M24, M25, M29)	0130M00145	TRANSFORMER 480V to 24V, 75VA (M19, M20, M21, M22, M23, M24, M25, M29)
ZP39K5ETF5130	COMPRESSOR 39000, 200/230/60/3 (M1, M2, M3, M4, M5, M6, M7, M8, M9, M10, M11, M12, M13, M14, M15, M16, M17, M18)	0130M00147	TRANSFORMER 575V TO 230V, 150VA (M26, M27, M30)
ZP39K5ETFD130	COMPRESSOR 39000, 460/60/3 (M19, M20, M21, M22, M23, M24, M25)	0130M00148	TRANSFORMER 575V to 24V, 75VA (M26, M27, M30)
ZP39K5ETFE130	COMPRESSOR 39000, 575/60/3 (M26, M27)	0131L00002	VENT MOTOR
ZP44K5ETF5130	COMPRESSOR 44000, 200/230/60/3 (M28)	<b>Expanded Model Nomenclature</b>	
ZP44K5ETFD130	COMPRESSOR 44000, 460/60/3 (M29)	M1 - DCG0902103VHDAAA	
ZP44K5ETFE130	COMPRESSOR 44000, 575/60/3 (M30)	M2 - DCG0902103VHDDAA	
0131M00432	COND MOTOR 380/460/50/60 CYCLE (M19, M20, M21, M22, M23, M24, M25, M29)	M3 - DCG0902103VHXAAA	
0131M00431	COND MOTOR 575V (M26, M27, M30)	M4 - DCG0902103VHXBAA	
CONT3P025024V	CONTACTOR 25 AMP, 3P, 24V (QTY 4)	M5 - DCG0902103VHXZAA	
0130M00030	CUT-OUT SWITCH, HIGH PRESSURE	M6 - DCG0902103VRLTAA	
0130M00031	CUT-OUT SWITCH, HIGH PRESSURE	M7 - DCG0902103VVXZAA	
0130L00003	CUT-OUT SWITCH, LOW PRESSURE	M8 - DCG0902103VWDUAA	
0130L00002	CUT-OUT SWITCH, LOW PRESSURE	M9 - DCG0902103VWSNAA	
0130L00112	Duct Temp Sensor (M6, M19, M22)	M10 - DCG0902103VWXBAA	
0150G00001	FAN BLADE (QTY 2)	M11 - DCG0902103VWXNAA	
0130F00010	FLAME SENSOR	M12 - DCG0902103VWXXAA	
0151L00000	GAS VALVE (36H)	M13 - DCG0902103VXDAAA	
PCBAG123	IGNITION BOARD, DSI INTEGRATED (M6, M19, M22)	M14 - DCG0902103VXSXAA	
20261709	IGNITOR	M15 - DCG0902103VXXAAA	
10123532	MANUAL RESET LIMIT 350°F	M16 - DCG0902103VXXNAA	
0131L00041	MOTOR 2 HP BELT DRIVE 208-230V (M1, M2, M3, M4, M5, M6, M7, M8, M9, M10, M11, M12, M13, M14, M15, M16, M17, M18, M28)	M17 - DCG0902103VXXXAA	
0131L00043	MOTOR 2HP BELT DRIVE 460V (M19, M20, M21, M22, M23, M24, M25, M29)	M18 - DCG0902103V1DDAA	
0131L00042	MOTOR 2HP BELT DRIVE 575V (M26, M27, M30)	M19 - DCG0902104VFDAA	
0131M00847	MOTOR, 1/4 HP, 1 SP, 6 PL (M1, M2, M3, M4, M5, M6, M7, M9, M10, M11, M12, M13, M14, M15, M16, M17, M18, M28)	M20 - DCG0902104VHSNAA	
0164L00000	NOTCHED FAN BELT AX51	M21 - DCG0902104VHXBAA	
0130L00108	OD Air Temp Sensor (M6, M19, M22)	M22 - DCG0902104VRXDAA	
16330-3	POWER BLOCK (M1, M2, M3, M4, M5, M7, M8, M9, M10, M11, M12, M13, M14, M15, M16, M17, M18, M20, M21, M23, M24, M25, M26, M27, M28, M29, M30)	M23 - DCG0902104VWXJAA	
16330-3	POWER BLOCK (M6, M19, M22)	M24 - DCG0902104VXSXAA	
11112501	PRESSURE SWITCH	M25 - DCG0902104VXXXAA	
0130F00036	PRIMARY LIMIT - PINK	M26 - DCG0902107VASAAA	
B1370199	PRIMARY LIMIT SWITCH 190°F	M27 - DCG0902107VXXXAA	
10135604	RELAY (M1, M2, M3, M4, M5, M7, M8, M9, M10, M11, M12, M13, M14, M15, M16, M17, M18, M20, M21, M23, M24, M25, M26, M27, M28, M29, M30)	M28 - DCG1022103VXXXAA	
0130M00242	RELAY, 24V (M1, M2, M3, M4, M5, M7, M8, M9, M10, M11, M12, M13, M14, M15, M16, M17, M18, M20, M21, M23, M24, M25, M26, M27, M28, M29, M30)	M29 - DCG1022104VXXXAA	
		M30 - DCG1022107VXXXAA	

# Cabinet Assembly



# Cabinet Assembly

Ref. Part No:	Description:	Ref. Part No:	Description:
<b>Image 1:</b>		<b>Expanded Model Nomenclature</b>	
11	0121L00065RFNG CORNER POST (QTY 3)	M1	- DCG0902103VHDAAA
11	0121L01407RFNG CORNER POST (M1, M2, M6, M8, M13, M18, M19)	M2	- DCG0902103VHDDAA
21	0121L00511NG LOUVERED SIDE PANEL (QTY 2)	M3	- DCG0902103VHXAAA
31	0121L00738RFNG ROLL FORM SIDE POST (M3, M4, M5, M7, M9, M10, M11, M12, M14, M15, M16, M17, M20, M21, M22, M23, M24, M25, M26, M27, M28, M29, M30)	M4	- DCG0902103VHXBAA
31	0121L01400RFNG SIDE POST (M1, M2, M6, M8, M13, M18, M19)	M5	- DCG0902103VHXZAA
41	0121L00737NG FILTER DOOR	M6	- DCG0902103VRLTAA
51	0121L00739RFNG FILTER DOOR POST (M3, M4, M5, M7, M9, M10, M11, M12, M14, M15, M16, M17, M20, M21, M22, M23, M24, M25, M26, M27, M28, M29, M30)	M7	- DCG0902103VVXZAA
51	0121L01432RFNG FILTER DOOR POST (M1, M2, M6, M8, M13, M18, M19)	M8	- DCG0902103VWDUAA
61	0121L00510NG ECONOMIZER DOOR (M1, M2, M3, M4, M5, M13, M14, M15, M16, M17, M18, M20, M21, M24, M25, M26, M27, M28, M29, M30)	M9	- DCG0902103VWSNAA
71	0121L01364NG DUCT PANEL (M7, M13, M14, M16, M17, M19, M24, M25, M27, M28, M29, M30)	M10	- DCG0902103VWXBAA
71	0121L01365NG DUCT PANEL (M1, M2, M3, M4, M5, M6, M8, M9, M10, M11, M12, M18, M20, M21, M22, M23)	M11	- DCG0902103VWXNAA
71	0121L01366NG DUCT PANEL (M15, M26)	M12	- DCG0902103VWXXAA
81	0121L00082NG RETURN DUCT COVER	M13	- DCG0902103VXDAAA
91	0121L00099NG SUPPLY DUCT COVER	M14	- DCG0902103VXSAAA
101	0121L00974NG CONTROL DOOR	M15	- DCG0902103VXXAAA
111	0121L02517RFNG RF, PAINTED CNTL POST HINGED (M1, M2, M6, M8, M13, M18, M19)	M16	- DCG0902103VXXNAA
111	0121L02303RFNG RF, PAINTED CONTROL POST (M3, M4, M5, M7, M9, M10, M11, M12, M14, M15, M16, M17, M20, M21, M22, M23, M24, M25, M26, M27, M28, M29, M30)	M17	- DCG0902103VXXXAA
121	0121L00767NG ELECTRIC HEAT DOOR	M18	- DCG0902103V1DDAA
131	0121L00763NG BLOWER DOOR	M19	- DCG0902104VFDDAA
141	0121L00765RFNG BURNER BOX POST	M20	- DCG0902104VHSNAA
161	0121L00766NG BURNER DOOR	M21	- DCG0902104VHXBAA
171	0121L00129 DOOR RAIN SHIELD	M22	- DCG0902104VRXDAA
231	0121L01099RF RAIL, BASE SIDES (QTY 2)	M23	- DCG0902104VWXJAA
241	0121L00834RF RAIL, BASE ENDS	M24	- DCG0902104VXSAAA
251	0121G00301 RAIL CORNER BRACKET (QTY 4)	M25	- DCG0902104VXXXAA
NS	0121L00727 ECONOMIZER COVER (M7, M8, M9, M10, M11, M12, M23)	M26	- DCG0902107VASAAA
NS	0121L01310 ECONOMIZER COVER (M6, M19, M22)	M27	- DCG0902107VXXXAA
NS	0164L00009 GASKET-RUBBER, CPOST (QTY 3)	M28	- DCG1022103VXXXAA
NS	0164L00011 GASKET-RUBBER, SIDE POST (QTY 5)	M29	- DCG1022104VXXXAA
		M30	- DCG1022107VXXXAA

# Top Panel and Tubing Assembly

IMAGE 1

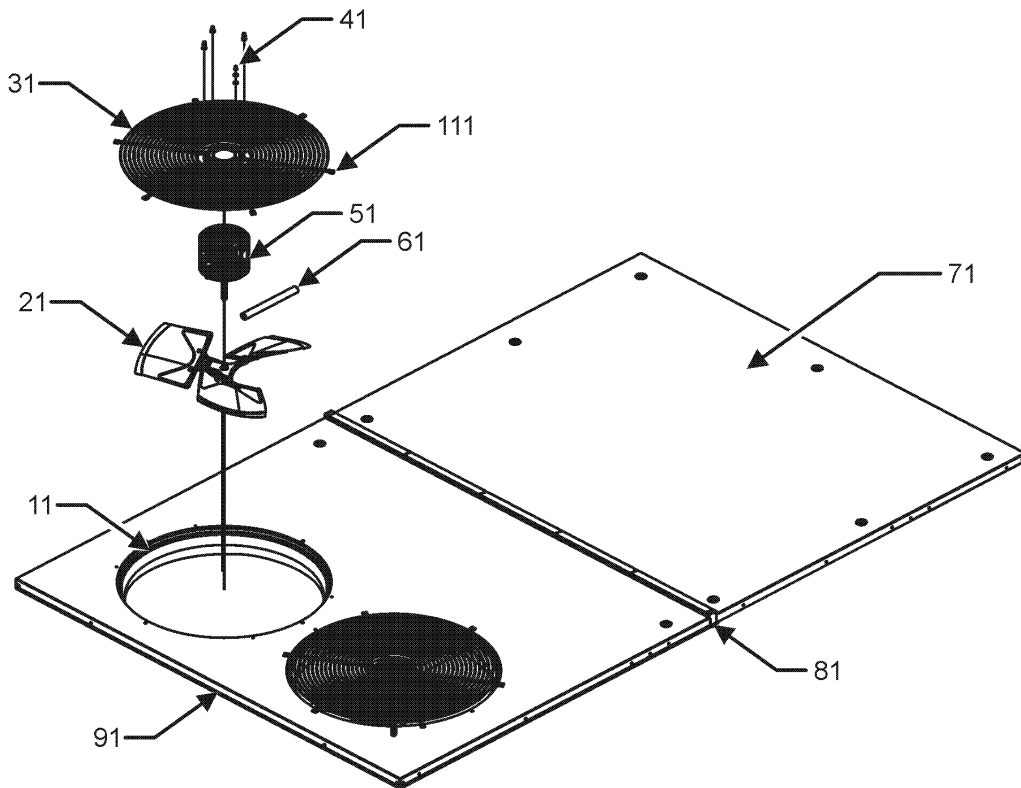
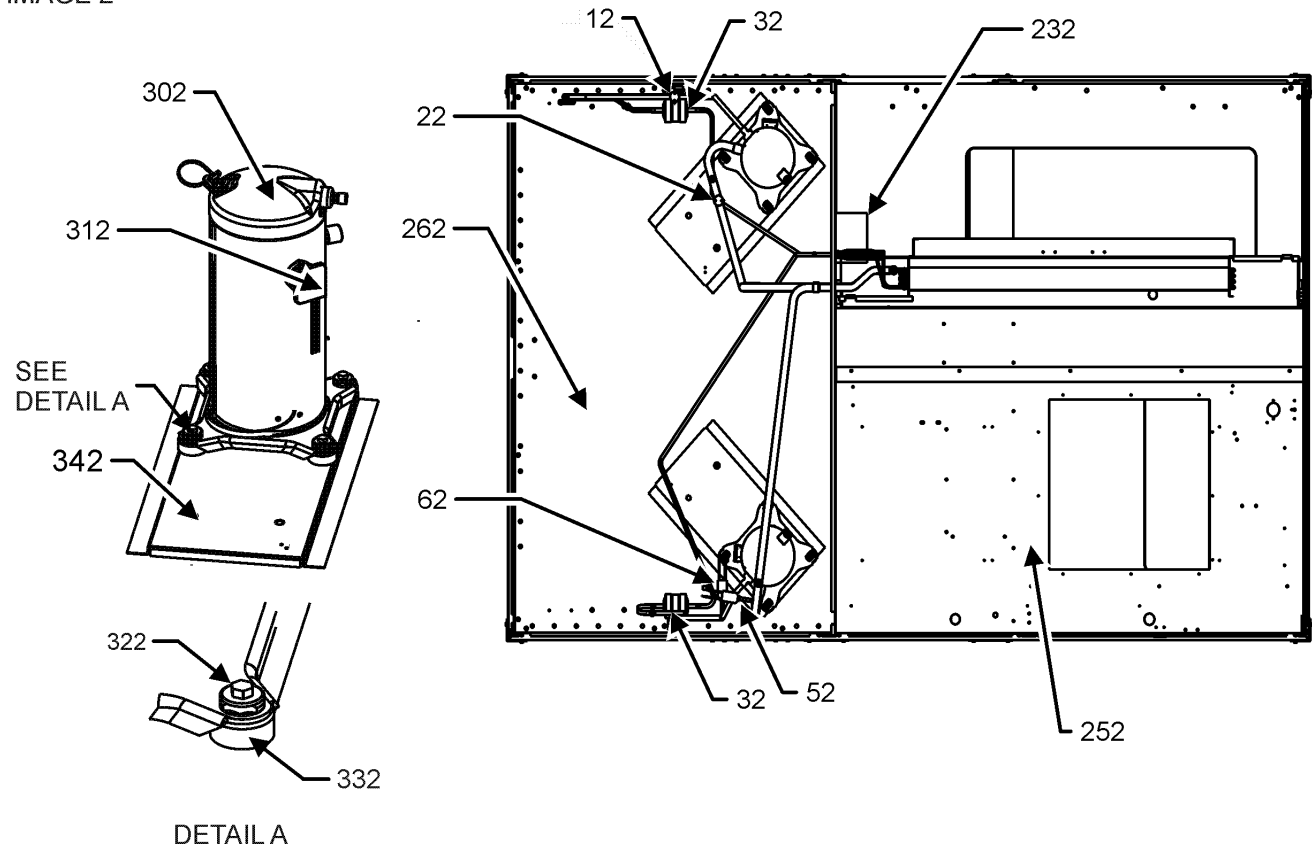


IMAGE 2

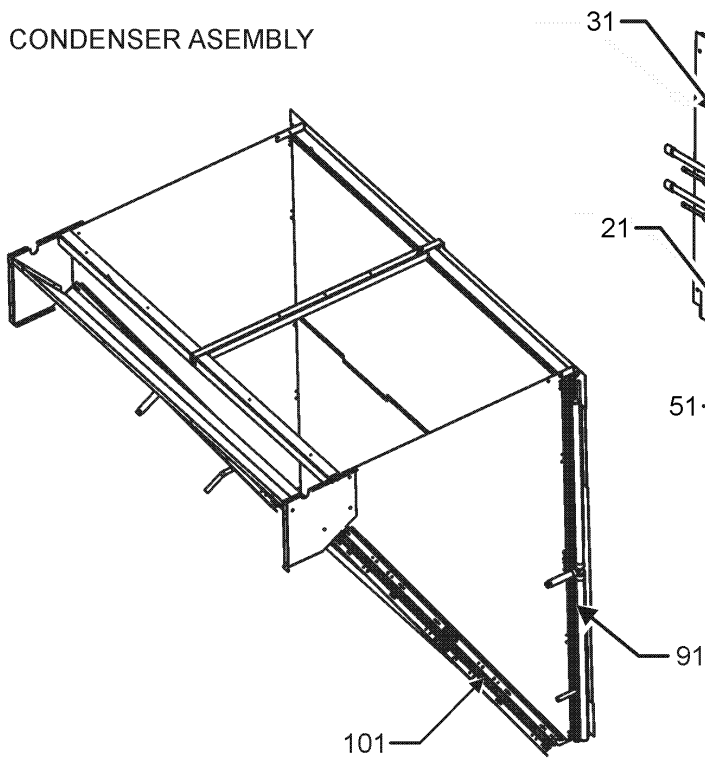


# Top Panel and Tubing Assembly

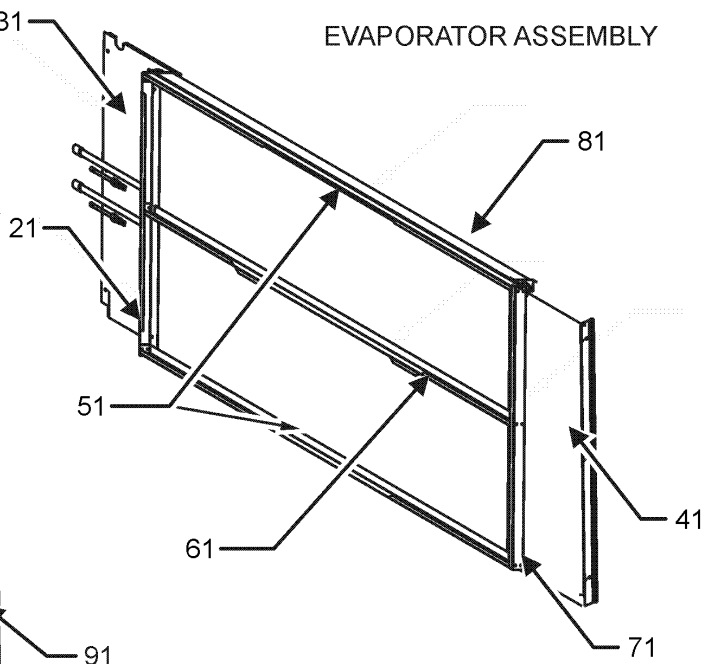
Ref. Part No: No:	Description:	Ref. Part No: No:	Description:
<b>Image 1:</b>		<b>Expanded Model Nomenclature</b>	
11	0161L00000 VENTURI RING 22" (QTY 2)	M1	- DCG0902103VHDAAA
21	0150G00001 FAN BLADE (QTY 2)	M2	- DCG0902103VHDDAA
31	0152G00000 FAN GRILLE, RAISED (QTY 2)	M3	- DCG0902103VHXAAA
41	0163M00006P ACORN NUT 5/16 HEX BLACK (QTY 8)	M4	- DCG0902103VHXBAA
51	0131M00432 COND MOTOR 380/460/50/60 CYCLE (M19, M20, M21, M22, M23, M24, M25, M29)	M5	- DCG0902103VHXZAA
51	0131M00431 COND MOTOR 575V (M26, M27, M30)	M6	- DCG0902103VRLTAA
51	0131M00847 MOTOR, 1/4 HP, 1 SP, 6 PL (M1, M2, M3, M4, M5, M6, M7, M9, M10, M11, M12, M13, M14, M15, M16, M17, M18, M28)	M7	- DCG0902103VVXZAA
51	0131L00061 MOTOR, 1/4 HP, 1SP, 6PL (M8)	M8	- DCG0902103VWDUAA
61	0163M00386 CONDUIT-FLEXIBLE (QTY 2)	M9	- DCG0902103VWSNAA
71	0121L01119NG PAINTED TOP PANEL INDOOR	M10	- DCG0902103VWXBAA
81	20455902 SPLICE GASKET .50 X .25 (QTY 8)	M11	- DCG0902103VWXNAA
91	0121L01118NG PAINTED TOP PANEL OUTDOOR	M12	- DCG0902103VWXXAA
111	0163M00005P WASHER, BLACK (.50 OD .218ID) (QTY 8)	M13	- DCG0902103VXDAAA
NS	0259L00026 COND MOTOR HARNESS 460V (M19, M20, M21, M22, M23, M24, M25, M29)	M14	- DCG0902103VXSAAA
NS	0259L00028 COND MOTOR HARNESS 460V (M19, M20, M21, M22, M23, M24, M25, M29)	M15	- DCG0902103VXXAAA
NS	0259L00511 HARNESS COND MOTOR (M1, M2, M3, M4, M5, M6, M7, M8, M9, M10, M11, M12, M13, M14, M15, M16, M17, M18, M26, M27, M28, M30)	M16	- DCG0902103VXXNAA
NS	0259L00512 HARNESS COND MOTOR (M1, M2, M3, M4, M5, M6, M7, M8, M9, M10, M11, M12, M13, M14, M15, M16, M17, M18, M26, M27, M28, M30)	M17	- DCG0902103VXXXAA
NS	0163M00004 SCREW #10X3/4", BLACK (QTY 22)	M18	- DCG0902103V1DDAA
<b>Image 2:</b>		M19	- DCG0902104VFDDAA
12	0130M00031 CUT-OUT SWITCH, HIGH PRESSURE	M20	- DCG0902104VHSNAA
22	0130L00003 CUT-OUT SWITCH, LOW PRESSURE	M21	- DCG0902104VHXBAA
32	B1219204 BI-FLOW FILTER DRIER (QTY 2)	M22	- DCG0902104VRXDAA
52	0130L00002 CUT-OUT SWITCH, LOW PRESSURE	M23	- DCG0902104VWXJAA
62	0130M00030 CUT-OUT SWITCH, HIGH PRESSURE	M24	- DCG0902104VXSAAA
232	0121L00359 SHIELD-EVAPORATOR DRIP	M25	- DCG0902104VXXXAA
252	0121L00944 BASE PAN - INDOOR	M26	- DCG0902107VASAAA
262	0121L02129 BASE PAN - OUTDOOR	M27	- DCG0902107VXXXAA
302	ZP39K5ETF5130 COMPRESSOR 39000, 200/230/60/3 (M1, M2, M3, M4, M5, M6, M7, M8, M9, M10, M11, M12, M13, M14, M15, M16, M17, M18)	M28	- DCG1022103VXXXAA
302	ZP39K5ETFD130 COMPRESSOR 39000, 460/60/3 (M19, M20, M21, M22, M23, M24, M25)	M29	- DCG1022104VXXXAA
302	ZP39K5ETFE130 COMPRESSOR 39000, 575/60/3 (M26, M27)	M30	- DCG1022107VXXXAA
302	ZP44K5ETF5130 COMPRESSOR 44000, 200/230/60/3 (M28)		
302	ZP44K5ETFD130 COMPRESSOR 44000, 460/60/3 (M29)		
302	ZP44K5ETFE130 COMPRESSOR 44000, 575/60/3 (M30)		
312	0159L00066 COMPRESSOR SCROLL HARNESS		
312	0159L00067 COMPRESSOR SCROLL HARNESS		
322	M0221641 TF SHOULDER SCREW (QTY 8)		
332	B1339533 COMPRESSOR GROMMET (QTY 8)		
342	0121L02128 COMPRESSOR MOUNTING PLATE (QTY 2)		
NS	B1373315 ACCESS FITTING (QTY 4)		
NS	0141L00006X BOARD FORK (QTY 2)		
NS	0121L00055 BRACKET-FORK BOARD (QTY 4)		
NS	0163M00175 CAP WITH O-RING (QTY 4)		

# Condenser, Evaporator and Partition Assy

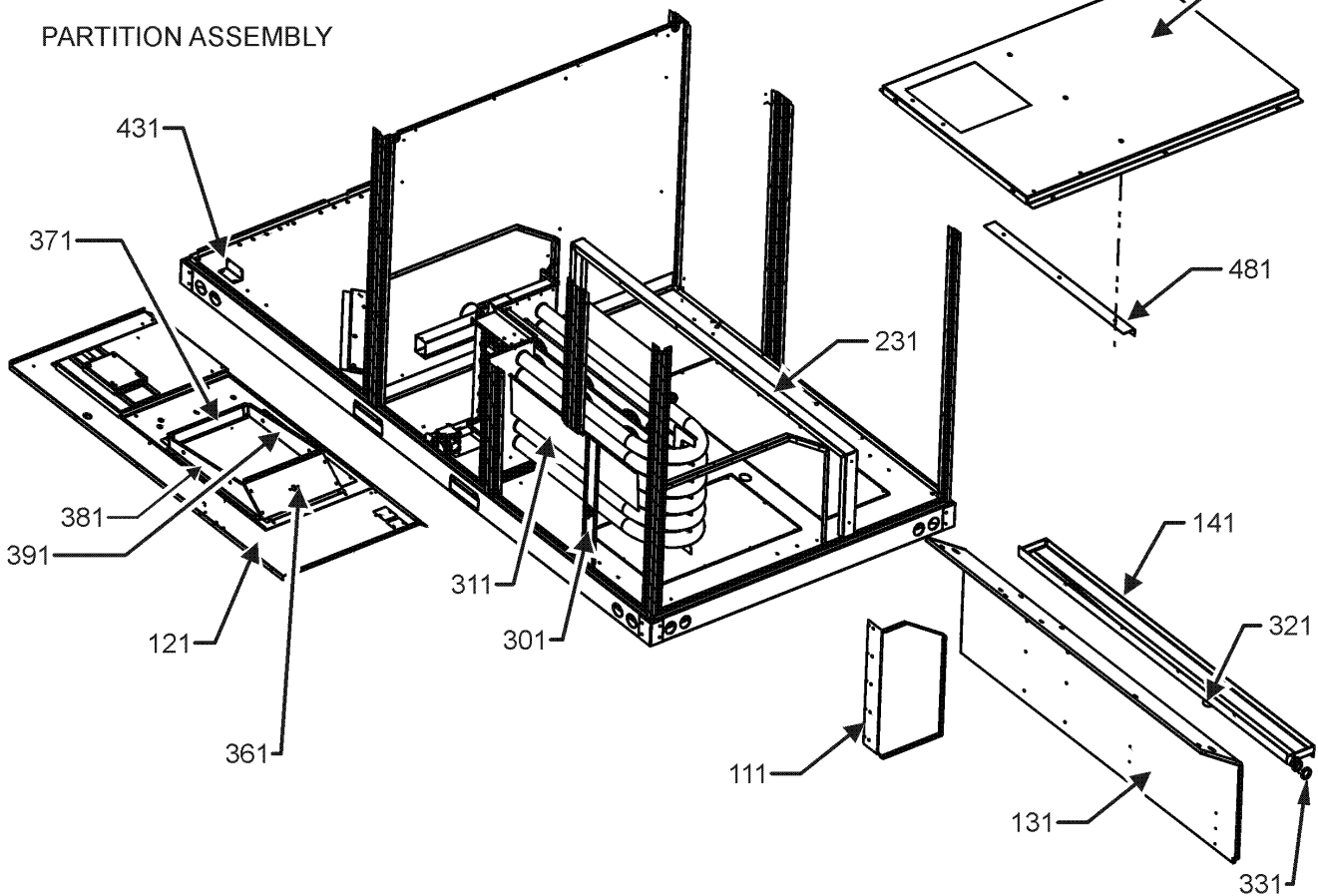
CONDENSER ASSEMBLY



EVAPORATOR ASSEMBLY



PARTITION ASSEMBLY

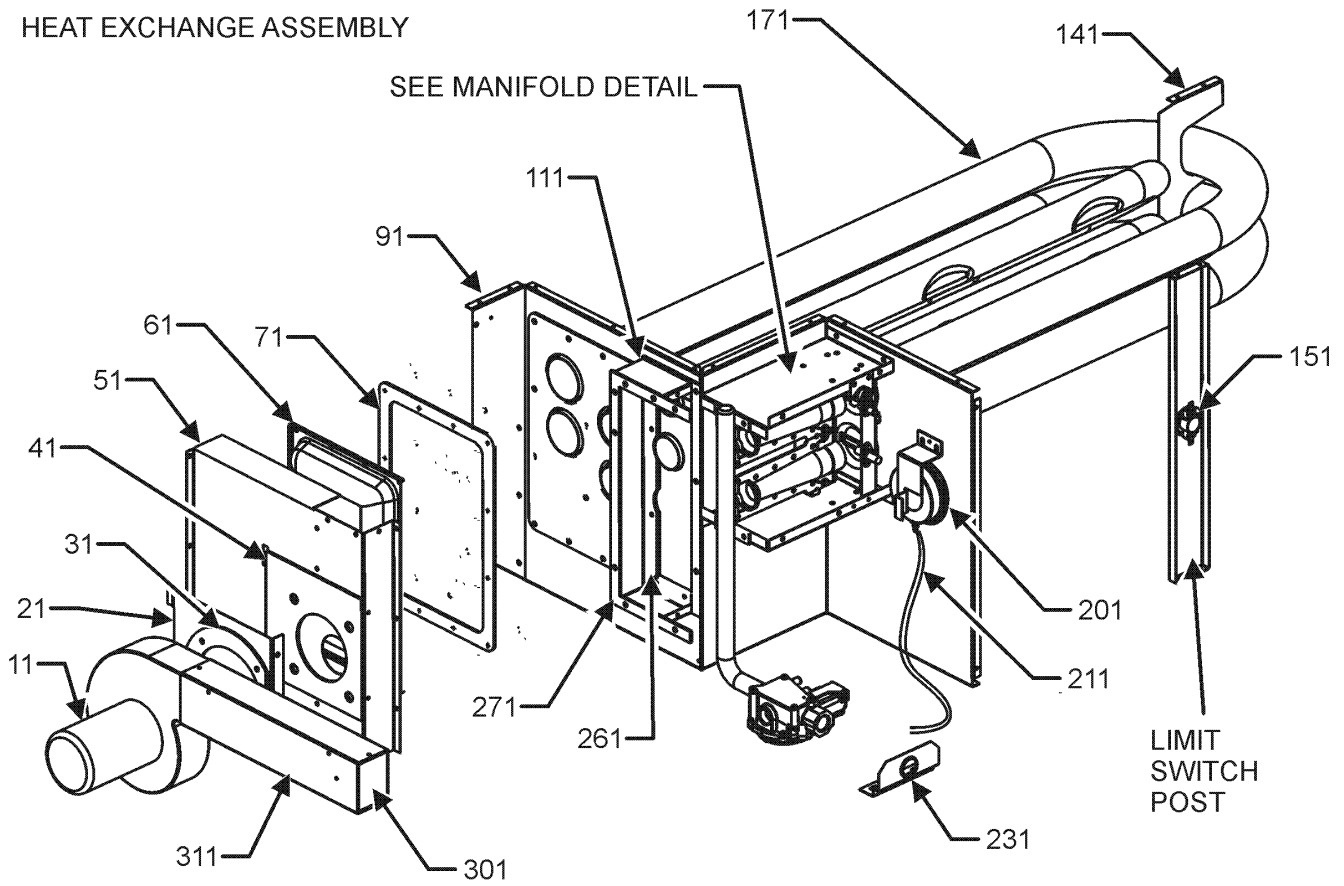


# Condenser, Evaporator and Partition Assy

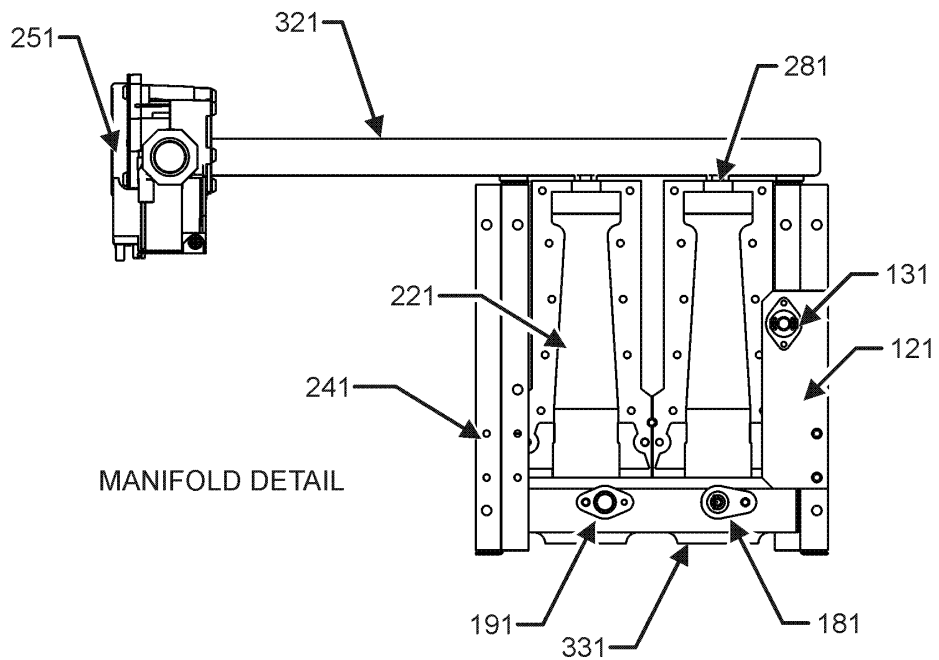
Ref. Part No: No:	Description:	Ref. Part No: No:	Description:
<i>Image 1:</i>		<b>Expanded Model Nomenclature</b>	
21	0121L00357	FILTER ANGLE-VERTICAL (RETURN SIDE)	M1 - DCG0902103VHDAAA
31	0121L00210	EVAP EXTENSION-RETURN SIDE	M2 - DCG0902103VHDDAA
41	0121L00844	EVAP EXTENSION-HAIRPIN SIDE	M3 - DCG0902103VHXAAA
51	0121L00932	FILTER ANGLE-HORIZONTAL (QTY 2)	M4 - DCG0902103VHXBAA
61	0121L01255	FILTER ANGLE - CENTER	M5 - DCG0902103VHXZAA
71	0121L00358	FILTER ANGLE-VERTICAL (HAIRPIN SIDE)	M6 - DCG0902103VRLTAA
81	0202L00091	TUBING ASSY, EVAP COIL (M1, M2, M3, M4, M5, M6, M7, M8, M9, M10, M11, M12, M13, M14, M15, M16, M17, M18, M19, M20, M21, M22, M23, M24, M25, M26, M27)	M7 - DCG0902103VVXZAA
81	0202L00112	TUBING ASSY, EVAP COIL (M28, M29, M30)	M8 - DCG0902103VWDUAA
91	0201L00209	COND COIL ASSY, 5MM	M9 - DCG0902103VWSNAA
101	0201L00210	COND COIL ASSY, 5MM	M10 - DCG0902103VWXBAA
111	0121L00522	HEAT EXCHANGER BLOCK-OFF	M11 - DCG0902103VWXNAA
121	0121L02500	DECK-BLOWER	M12 - DCG0902103VWXXAA
131	0121L00374	DECK SIDE CHANNEL	M13 - DCG0902103VXDAAA
141	0161L00002	DRAIN PAN	M14 - DCG0902103VXSXAA
151	0121L00366	BASE-HEAT EXCHANGER	M15 - DCG0902103VXXAAA
231	0121L00508	DRAIN PAN SUPPORT	M16 - DCG0902103VXXNAA
261	0121L00071RF	RAIL-BASE DUCT END	M17 - DCG0902103VXXXAA
301	0121L00093	POST-LIMIT SWITCH	M18 - DCG0902103V1DDAA
311	0121L00136	BAFFLE-BLOWER	M19 - DCG0902104VFDDAA
321	0163L00071	DRAIN PAN PLUG	M20 - DCG0902104VHSNAA
331	0154L00009	DRAIN PAN GASKET	M21 - DCG0902104VHXBAA
361	0121L00090	BLOWER TRANSITION, RH END	M22 - DCG0902104VRXDAA
371	0121L00097	BLOWER TRANSITION, LH END	M23 - DCG0902104VWXJAA
381	0121L00092	BLOWER TRANSITION, FRONT	M24 - DCG0902104VXSXAA
391	0121L00145	BLOWER TRANSITION, BACK	M25 - DCG0902104VXXXAA
431	0121L00369	BRACE-CONDENSER (M1, M2, M3, M4, M5, M6, M7, M8, M9, M10, M11, M12, M13, M14, M15, M16, M17, M18, M19, M20, M21, M22, M23, M24, M25, M26, M27)	M26 - DCG0902107VASAAA
431	0121L00513	BRACE-CONDENSER (M28, M29, M30)	M27 - DCG0902107VXXXAA
481	0121L00143	ANGLE-HT BASE BRACE	M28 - DCG1022103VXXXAA
NS	0160L00174	AIR FILTER 16 X 20 X 2 (QTY 4)	M29 - DCG1022104VXXXAA
NS	0121L01398	DECK, SUPPORT BLOWER (M1, M2, M6, M8, M13, M18, M19)	M30 - DCG1022107VXXXAA
NS	0121L01402	DECK, SUPPORT CONTROL (M1, M2, M6, M8, M13, M18, M19)	
NS	0121L00321	SMOKE DETECTOR COVER (QTY 2)	

# Heat Exchange Assembly

HEAT EXCHANGE ASSEMBLY

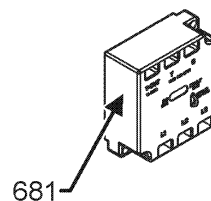
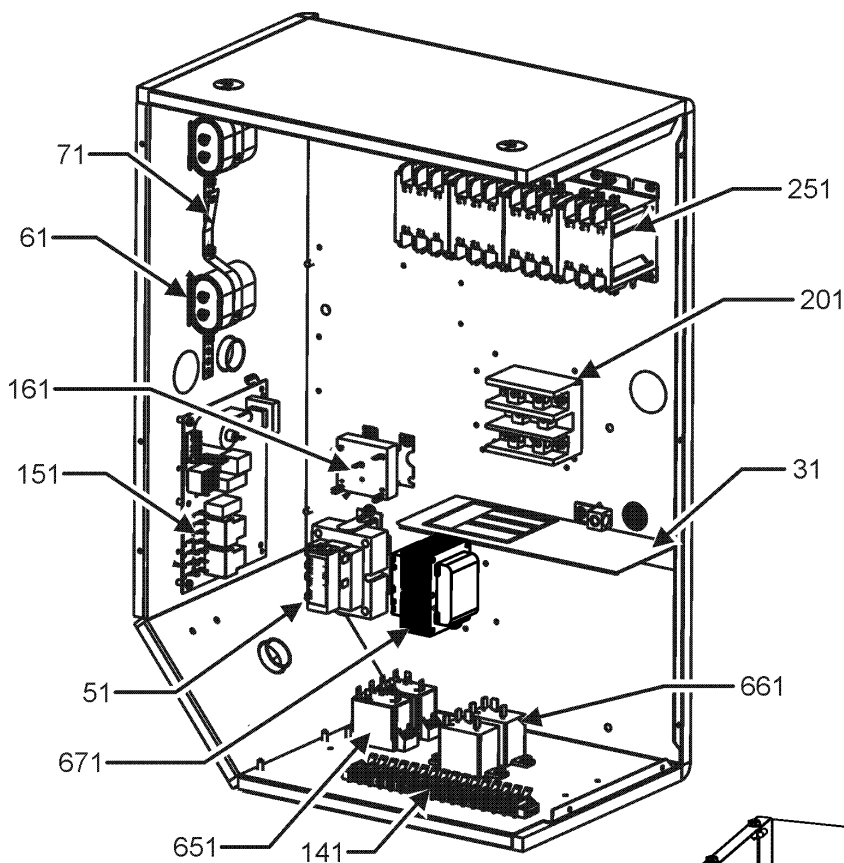


MANIFOLD ASSEMBLY



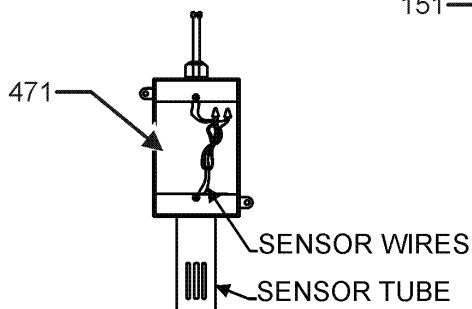
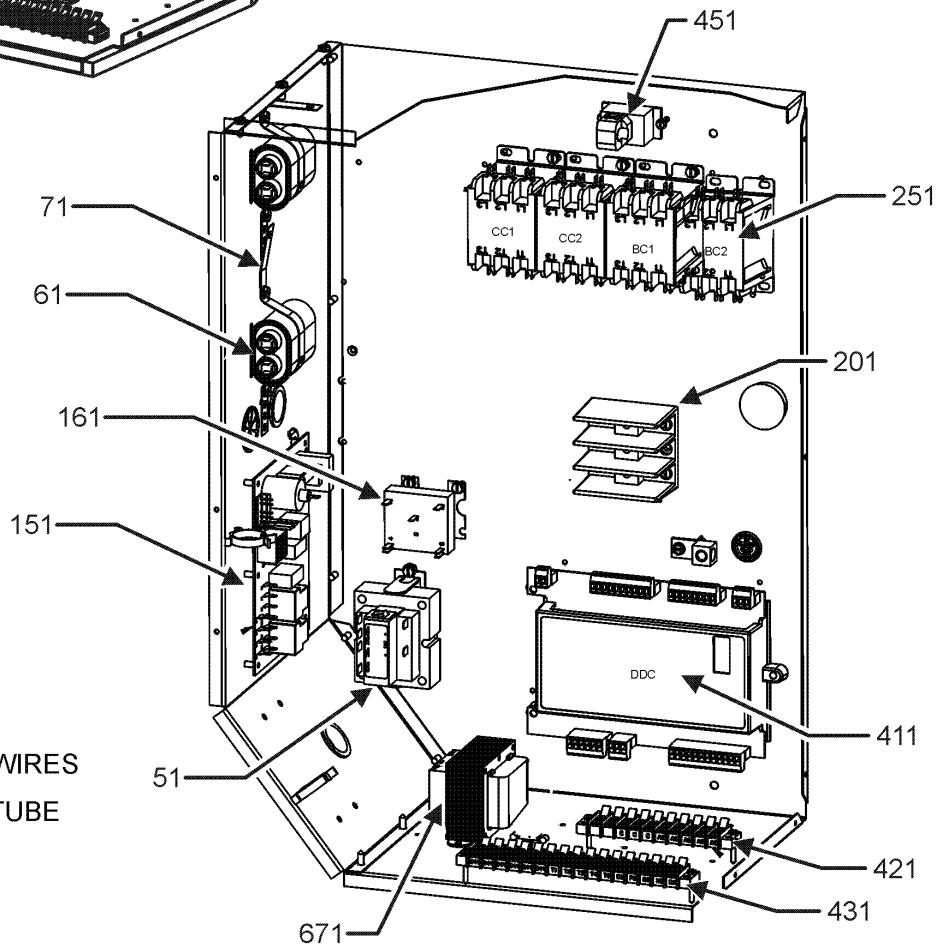


# Control Box Assembly



PHASE MONITOR DETAIL

CONTROL BOX FOR MODELS WITH DDC CONTROL



FRONT VIEW

# Control Box Assembly

Ref. Part No:	No:	Description:	Ref. Part No:	No:	Description:
<i>Image 1:</i>			<i>Image 1:</i>		
31	0121G00491	VOLTAGE BARRIER (M1, M2, M3, M4, M5, M7, M8, M9, M10, M11, M12, M13, M14, M15, M16, M17, M18, M20, M21, M23, M24, M25, M26, M27, M28, M29, M30)	NS	0259L00191	HARNESS, BELT DRIVE MOTOR
			NS	0259L00496	HARNESS, NON POW, CONV, OUT (M1, M3, M8, M15, M23, M26)
51	0130M00144	TRANSFORMER (M1, M2, M3, M4, M5, M6, M7, M8, M9, M10, M11, M12, M13, M14, M15, M16, M17, M18, M28)	NS	0259L00092	HARNESS-SMOKE DETECTOR SENSOR (M2, M5, M6, M7, M8, M9, M11, M16, M18, M19, M20, M22, M23)
51	0130M00145	TRANSFORMER 480V to 24V, 75VA (M19, M20, M21, M22, M23, M24, M25, M29)	NS	0259L00162	MALE PLUG ASSY (12 PIN)
			NS	0130L00107	ROOM SENSOR (M6, M19, M22)
51	0130M00148	TRANSFORMER 575V to 24V, 75VA (M26, M27, M30)	NS	0259L00381	WIRE ASSY (M6, M19, M22)
			NS	0259L00403	WIRE ASSY (M6, M19, M22)
			NS	0259L00404	WIRE ASSY (M6, M19, M22)
61	CAP030000440LA	CAPACITOR 3/440V (M26, M27, M30)	NS	0259L00494	WIRE HARN, SMOKE DET MED DDC (M6, M19, M22)
61	CAP050000370LA	CAPACITOR 5/370V (M1, M2, M3, M4, M5, M6, M7, M8, M9, M10, M11, M12, M13, M14, M15, M16, M17, M18, M28)	NS	0259L00502	WIRE HARNESS
			NS	0259L00503	WIRE HARNESS (M6, M19, M22)
61	CAP075000370LA	CAPACITOR 7.5/370V (M19, M20, M21, M22, M23, M24, M25, M29)	NS	0259L00148	WIRE HARNESS ASSY
			NS	0259L00149	WIRE HARNESS ASSY
71	20520901	CAPACITOR STRAP (QTY 2)	NS	0259L00152	WIRE HARNESS ASSY
141	0130M00038	TERMINAL BOARD (M1, M2, M3, M4, M5, M7, M8, M9, M10, M11, M12, M13, M14, M15, M16, M17, M18, M20, M21, M23, M24, M25, M26, M27, M28, M29, M30)	NS	0259L00192	WIRE HARNESS, ECONOMIZER
			NS	0259L00090	WIRE HARNESS-SMOKE DETECTOR (M2, M5, M7, M8, M9, M11, M16, M18, M20, M23)
151	PCBAG123	IGNITION BOARD, DSI INTEGRATED (M6, M19, M22)	NS	0259L00415	WIRE, HARNESS ASSY (M6)
			NS	0259L00426	WIRE, HARNESS ASSY. (M6)
161	0130M00025	24V RELAY	NS	0259L00557	WIRING HARNESS (M18)
201	16330-3	POWER BLOCK (M6, M19, M22)			
201	16330-3	POWER BLOCK (M1, M2, M3, M4, M5, M7, M8, M9, M10, M11, M12, M13, M14, M15, M16, M17, M18, M20, M21, M23, M24, M25, M26, M27, M28, M29, M30)			
251	CONT3P025024V	CONTACTOR 25 AMP, 3P, 24V (QTY 4)			
411	PCBCG100	DDC Controller (M6, M19, M22)			
421	0130M00274	TERMINAL BOARD (M6, M19, M22)			
431	0130M00275	TERMINAL BOARD (M6, M19, M22)			
451	0259L00368	CURRENT SWITCH WITH TERMS (M6, M19, M22)			
471	0130L00108	OD Air Temp Sensor (M6, M19, M22)			
651	10135604	RELAY (M1, M2, M3, M4, M5, M7, M8, M9, M10, M11, M12, M13, M14, M15, M16, M17, M18, M20, M21, M23, M24, M25, M26, M27, M28, M29, M30)			
661	0130M00242	RELAY, 24V (M1, M2, M3, M4, M5, M7, M8, M9, M10, M11, M12, M13, M14, M15, M16, M17, M18, M20, M21, M23, M24, M25, M26, M27, M28, M29, M30)			
671	0130M00144	TRANSFORMER (M1, M2, M3, M4, M5, M6, M7, M8, M9, M10, M11, M12, M13, M14, M15, M16, M17, M18, M28)			
671	0130M00146	TRANSFORMER 480V TO 230V, 150VA (M19, M20, M21, M22, M23, M24, M25, M29)			
671	0130M00147	TRANSFORMER 575V TO 230V, 150VA (M26, M27, M30)			
681	0130L00105	PHASE MONITOR (M6)			
NS	0259L00153	2 SPEED CONTROL HARNESS			
NS	0259L00153	2 SPEED CONTROL HARNESS			
NS	0259L00155	2 SPEED RELAY HARNESS			
NS	0259L00155	2 SPEED RELAY HARNESS			
NS	0130L00112	Duct Temp Sensor (M6, M19, M22)			
NS	0259L00401	HARN, BINARY INPUT, DDC (M6, M19, M22)			
NS	0259L00382	HARN, CNTL PWR, DDC (M6, M19, M22)			
NS	0259L00420	HARN, IIC, DDC 2 SP (M6, M19, M22)			
NS	0259L00399	HARN, PWR XFMR CNTL (M6, M19, M22)			
NS	0259L00419	HARN, RELAY OUTPUT, DDC 2 SP (M6, M19, M22)			

# Control Box Assembly

Ref. Part

No: No:

Description:

Ref. Part

No: No:

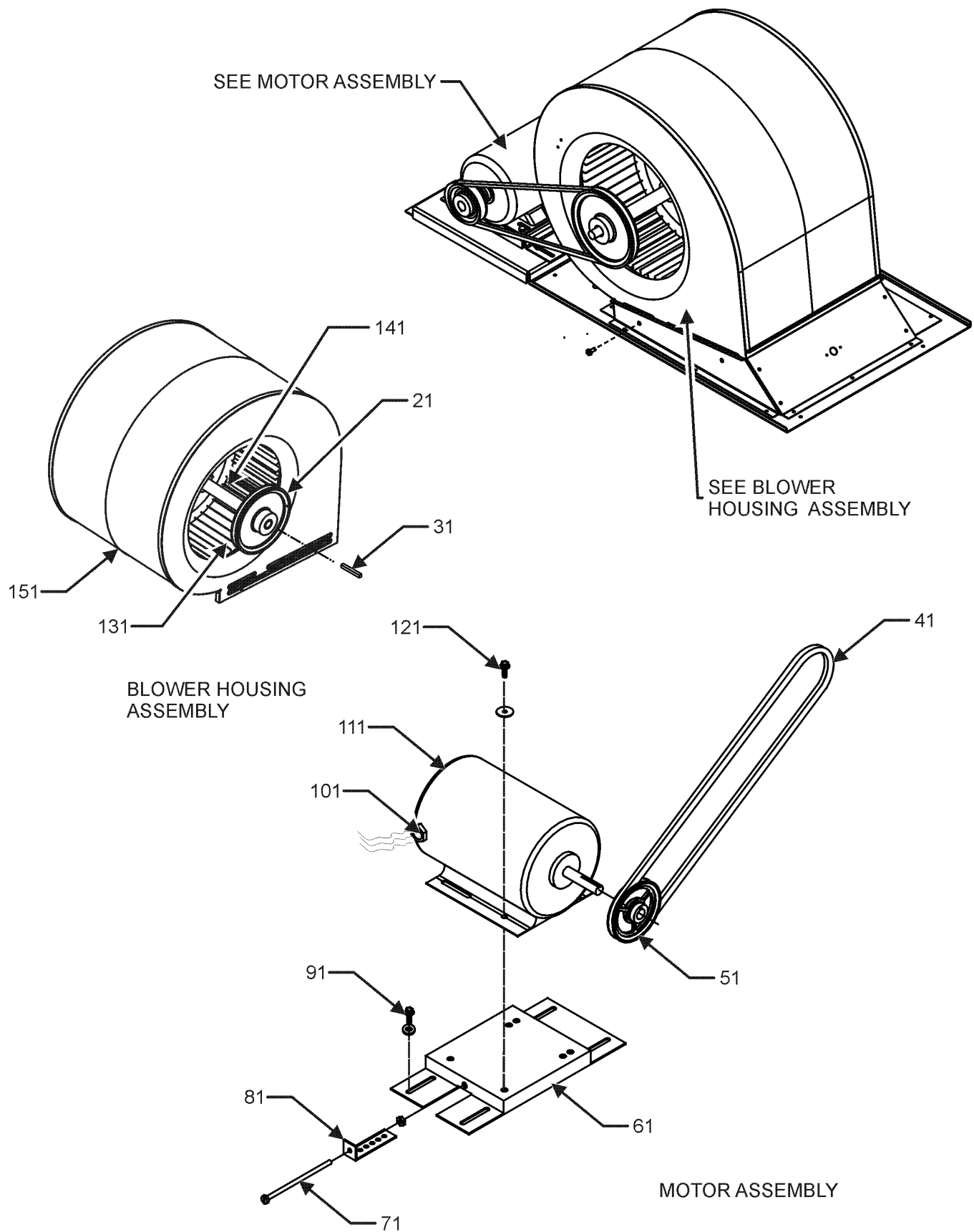
Description:

---

Expanded Model Nomenclature

M1 - DCG0902103VHDAAA
M2 - DCG0902103VHDDAA
M3 - DCG0902103VHXAAA
M4 - DCG0902103VHXBAA
M5 - DCG0902103VHXZAA
M6 - DCG0902103VRLTAA
M7 - DCG0902103VVXZAA
M8 - DCG0902103VVDUAA
M9 - DCG0902103VVSNA A
M10 - DCG0902103VWXBAA
M11 - DCG0902103VWXNAA
M12 - DCG0902103VWXXAA
M13 - DCG0902103VXDAAA
M14 - DCG0902103VXSAAA
M15 - DCG0902103VXXXAAA
M16 - DCG0902103VXXNAA
M17 - DCG0902103VXXXAA
M18 - DCG0902103V1DDAA
M19 - DCG0902104VFDDAA
M20 - DCG0902104VHSNAA
M21 - DCG0902104VHXBAA
M22 - DCG0902104VRXDAA
M23 - DCG0902104VWXJAA
M24 - DCG0902104VXSAAA
M25 - DCG0902104VXXXAAA
M26 - DCG0902107VASAAA
M27 - DCG0902107VXXXAA
M28 - DCG1022103VXXXAA
M29 - DCG1022104VXXXAA
M30 - DCG1022107VXXXAA

# Blower Belt Assembly



# Blower Belt Assembly

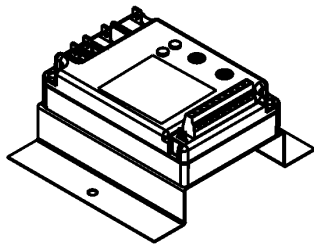
Ref. Part No: No:	Description:	Ref. Part No: No:	Description:
<i>Image 1:</i>		<b>Expanded Model Nomenclature</b>	
21	0163L00134 SHEAVE, FIXED AK74H	M1	- DCG0902103VHDAAA
31	0163M00407 MACHINE KEY, SPECIAL	M2	- DCG0902103VHDDAA
41	0164L00000 NOTCHED FAN BELT AX51	M3	- DCG0902103VHXAAA
51	0163L00012 VARIABLE PITCH SHEAVE VL40	M4	- DCG0902103VHXBAA
61	0121L01504 BASE-MOTOR	M5	- DCG0902103VHXZAA
71	0163M00045 BOLT 1/4-20 X 4"	M6	- DCG0902103VRLTAA
81	3225000F BELT TIGHTENER ANGLE	M7	- DCG0902103VVXZAA
91	B1446707 SCREW 5/16-18 X 1" (QTY 4)	M8	- DCG0902103VWDUAA
101	B1393726 ELECT. CONNECTING BUSHING	M9	- DCG0902103VWSNAA
111	0131L00041 MOTOR 2 HP BELT DRIVE 208-230V (M1, M2, M3, M4, M5, M6, M7, M8, M9, M10, M11, M12, M13, M14, M15, M16, M17, M18, M28)	M10	- DCG0902103VWXBAA
111	0131L00043 MOTOR 2HP BELT DRIVE 460V (M19, M20, M21, M22, M23, M24, M25, M29)	M11	- DCG0902103VWXNAA
111	0131L00042 MOTOR 2HP BELT DRIVE 575V (M26, M27, M30)	M12	- DCG0902103VWXXAA
121	B1393738 BOLT 1/4-20 X 3/4" (QTY 3)	M13	- DCG0902103VXDAAA
131	03-77429 BLOWER WHEEL	M14	- DCG0902103VXSXAA
141	04-11525 BLOWER SHAFT	M15	- DCG0902103VXXAAA
151	04-01525 BLOWER HOUSING	M16	- DCG0902103VXXNAA
171	0130F00036 PRIMARY LIMIT - PINK	M17	- DCG0902103VXXXAA
NS	04-02196 BLOWER BEARING & FRAME ASSY	M18	- DCG0902103V1DDAA
NS	0259L00191 HARNESS, BELT DRIVE MOTOR	M19	- DCG0902104VFDAAA
		M20	- DCG0902104VHSNAA
		M21	- DCG0902104VHXBAA
		M22	- DCG0902104VRXDAA
		M23	- DCG0902104VWXJAA
		M24	- DCG0902104VXSXAA
		M25	- DCG0902104VXXXAA
		M26	- DCG0902107VASAAA
		M27	- DCG0902107VXXXAA
		M28	- DCG1022103VXXXAA
		M29	- DCG1022104VXXXAA
		M30	- DCG1022107VXXXAA

# Accessory Parts List

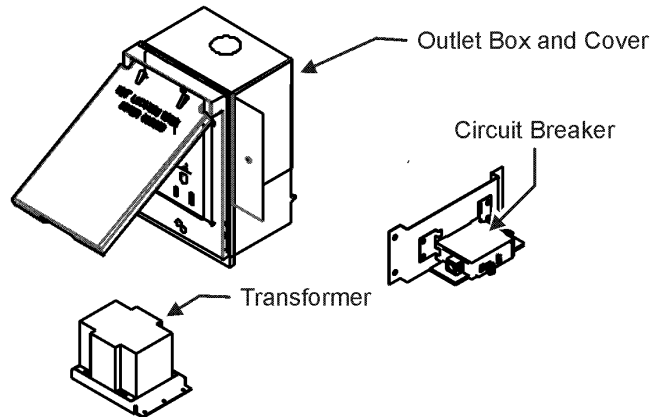
## ACCESSORY PARTS LIST

NOTE: NOT ALL OPTIONS AVAILABLE FOR ALL PRODUCTS

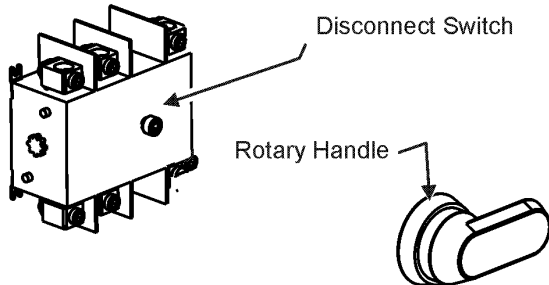
### 1 LOW AMBIENT KITS



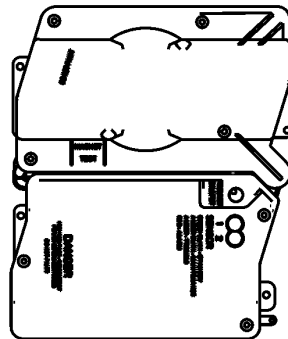
### 2 GFCI CONVENIENCE OUTLET



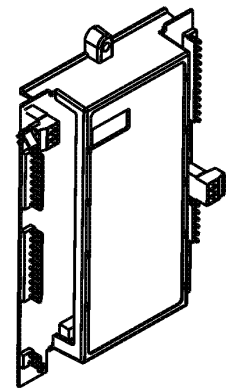
### 3 DISCONNECT MODULE (NON-FUSED)



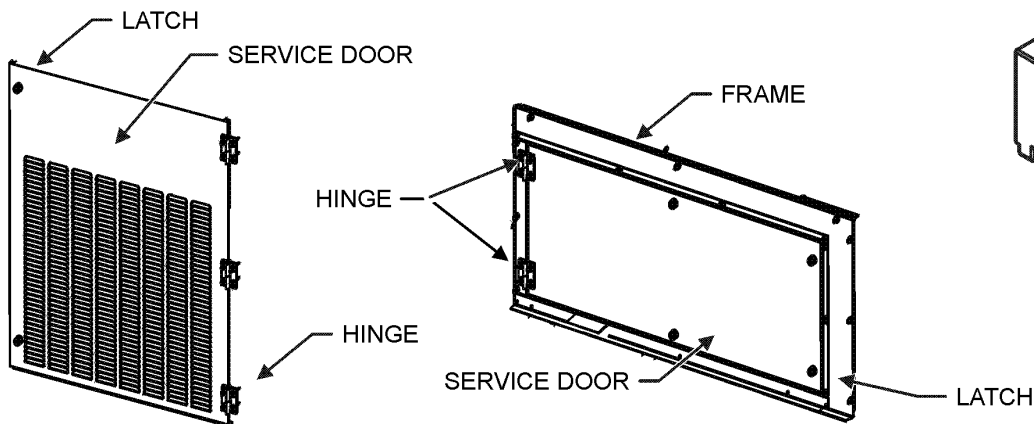
### 4 SMOKE DETECTORS



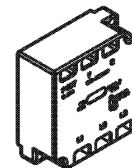
### 5 DDC CONTROL



### 6 HINGED DOOR ASSEMBLIES



### 7 PHASE MONITOR



# Accessory Parts List

Ref. Part No: No:	Description:	Ref. Part No: No:	Description:
<b>Image 1:</b>		<b>Image 1:</b>	
NS DDNECNJ90150B	7.5-12.5 TON DFLOW ECON (M7, M8, M9, M10, M11, M12, M23)	NS 0130L00046	SWITCH-DISCONNECT 60A (M1, M2, M3, M4, M5, M6, M8, M9, M10, M11, M12, M18, M20, M21, M22, M23)
NS 1036610B	7.5-12.5 TON DFLOW ECONOMIZER (M26)	NS 0130M00061	TRANSFORMER, CONVENIENCE OUTLET (M4, M6, M9, M10, M11, M16, M20, M21)
NS 10366D10B	7.5-12.5T DFLOW ECON, DDC (M6, M19, M22)	NS 0259L00557	WIRE HARNESS (M18)
NS 0121L00316	BRACKET-CONV OUTLET MOUNT (M1, M3, M4, M6, M8, M9, M10, M11, M15, M16, M20, M21, M23, M26)	<b>Expanded Model Nomenclature</b>	
NS 0121L00768	BRACKET-SMOKE DETECTOR (M2, M5, M7, M8, M9, M11, M16, M18, M20, M23)	<div style="border: 1px solid black; padding: 5px;"> M1 - DCG0902103VHDA  M2 - DCG0902103VHDDA  M3 - DCG0902103VHXAA  M4 - DCG0902103VHXBAA  M5 - DCG0902103VHXZAA  M6 - DCG0902103VRLTAA  M7 - DCG0902103VVXZAA  M8 - DCG0902103VWDUAA  M9 - DCG0902103VWSNAA  M10 - DCG0902103VWXBAA  M11 - DCG0902103VWXNAA  M12 - DCG0902103VWXXAA  M13 - DCG0902103VXDAA  M14 - DCG0902103VXSAA  M15 - DCG0902103VXXAAA  M16 - DCG0902103VXXNAA  M17 - DCG0902103VXXXAA  M18 - DCG0902103V1DDAA  M19 - DCG0902104VFDAA  M20 - DCG0902104VHSNAA  M21 - DCG0902104VHXBAA  M22 - DCG0902104VRXDAA  M23 - DCG0902104VWXJAA  M24 - DCG0902104VXSAA  M25 - DCG0902104VXXXAA  M26 - DCG0902107VASAAA  M27 - DCG0902107VXXXAA  M28 - DCG1022103VXXXAA  M29 - DCG1022104VXXXAA  M30 - DCG1022107VXXXAA </div>	
NS 0130M00065	CIRCUIT BREAKER, CONVENIENCE OUTLET (M4, M6, M9, M10, M11, M16, M20, M21)		
NS 0121L00973NG	DISCONNECT SWITCH COVER (M1, M2, M3, M4, M5, M6, M8, M9, M10, M11, M12, M18, M20, M21, M22, M23)		
NS 0121L01397NG	DOOR FRAME, BLOWER (M1, M2, M6, M8, M13, M18, M19)		
NS 0121L01406NG	DOOR FRAME, CONTROL (M1, M2, M6, M8, M13, M18, M19)		
NS 0121L02481NG	DOOR, SERVICE, BACK, BLOWER (M1, M2, M6, M8, M13, M18, M19)		
NS 0121L02480NG	DOOR, SERVICE, FRONT, BLOWER (M1, M2, M6, M8, M13, M18, M19)		
NS 0130L00012	GANG BOX-GFCI OUTLET (M1, M3, M4, M6, M8, M9, M10, M11, M15, M16, M20, M21, M23, M26)		
NS 0130L00039	HANDLE, ROTARY (M1, M2, M3, M4, M5, M6, M8, M9, M10, M11, M12, M18, M20, M21, M22, M23)		
NS 0163M00307	HINGE, LEFT HAND (M1, M2, M6, M8, M13, M18, M19)		
NS 0163M00308	HINGE, RIGHT HAND (M1, M2, M6, M8, M13, M18, M19)		
NS 0163M00322	LATCH (M1, M2, M6, M8, M13, M18, M19)		
NS 0130M00059	LOW AMBIENT KIT (M6)		
NS 0121L02220NG	PNT, DOOR FRAME FILTER (M1, M2, M6, M8, M13, M18, M19)		
NS 0121L02223NG	PNT, SERVICE DOOR BACK FILTER (M1, M2, M6, M8, M13, M18, M19)		
NS 0121L02218NG	PNT, SERVICE DOOR FRONT FILTER (M1, M2, M6, M8, M13, M18, M19)		
NS 0161G00012	POWER OUTLET BOX (M1, M3, M4, M6, M8, M9, M10, M11, M15, M16, M20, M21, M23, M26)		
NS 0130L00103	RECEPTACLE-GFCI OUTLET (M1, M3, M4, M6, M8, M9, M10, M11, M15, M16, M20, M21, M23, M26)		
NS RS400	REMOTE SENSOR (M18)		
NS SP400	SENSOR PACK (M18)		
NS 0121L01404NG	SERVICE DOOR BACK, CONTROL (M1, M2, M6, M8, M13, M18, M19)		
NS 0121L01403NG	SERVICE DOOR FRONT, CONTROL (M1, M2, M6, M8, M13, M18, M19)		
NS 0130L00057	SHAFT, CUT (M1, M2, M3, M4, M5, M6, M8, M9, M10, M11, M12, M18, M20, M21, M22, M23)		
NS 0130L00049	SHAFT, DISCONNECT (M1, M2, M3, M4, M5, M6, M8, M9, M10, M11, M12, M18, M20, M21, M22, M23)		
NS D4120	SMOKE DETECTOR, PHOTO 4WIRE (M2, M5, M7, M8, M9, M11, M16, M18, M20, M23)		
NS ECP400-5	SURVEYOR ECP (M18)		