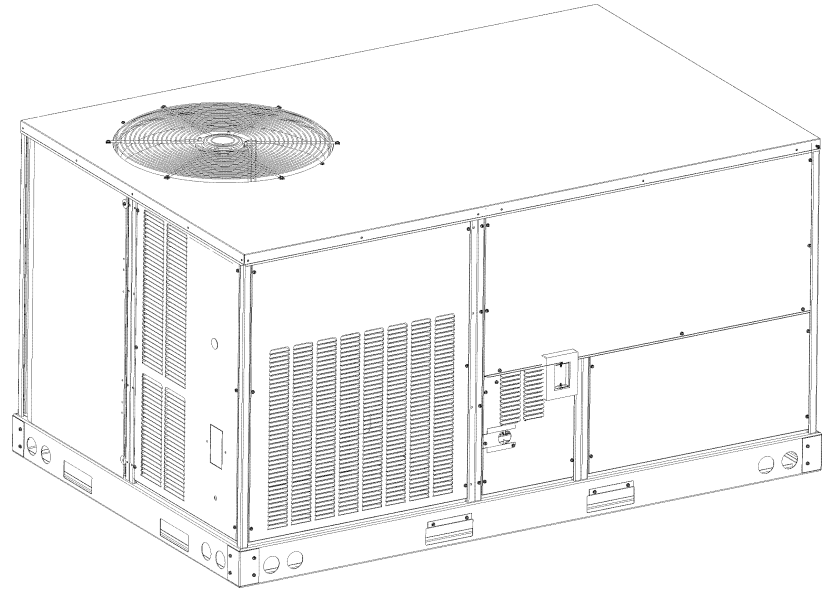


Commercial 6 Ton Package Gas Units

DCG0721403BAXDAB
DCG0721403BFXDAB
DCG0721403BHDDAB
DCG0721403BHXBAB
DCG0721403BHXFAB
DCG0721403BHXXAB
DCG0721403BJSNAB
DCG0721403BJXAAB
DCG0721403BJXUAB
DCG0721403BVSXAB
DCG0721403BVXVAB
DCG0721403BXL CAB
DCG0721403BXSXAB
DCG0721403BXXBAB
DCG0721403BXXXAB
DCG0721404BAXXAC
DCG0721404BHSBAC
DCG0721404BH SFAC
DCG0721404BH XDAC
DCG0721404BH XFAC
DCG0721404BJSFAC
DCG0721404BJXNAC
DCG0721404BJXUAC
DCG0721404BVSXAC
DCG0721404BWXGAC
DCG0721404BWXNAC
DCG0721404BXSXAC
DCG0721404BXXXAC
DCG0721407BJS AAB
DCG0721407BXXXAB



This manual is to be used by qualified technicians only.

This manual replaces RP-D1086J.

Important Information

Index

Functional Parts List	3
Illustration and Parts	4 - 17

Views shown are for parts illustrations only, not servicing procedures.

Text Codes:

AR - As Required

NA - Not Available

NS - Not Shown

00000000 - See Note

QTY - Quantity Example (QTY 3) (If Quantity not shown, Quantity = 1)

M - Model Example (M1) (If M Code not shown, then part is used on all Models)

Expanded Model Nomenclature:

Example M1 - Model#1 M2 - Model#2 M3 - Model#3

Daikin Company, L.P. is not responsible for personal injury or property damage resulting from improper service. Review all service information before beginning repairs.

Warranty service must be performed by an authorized technician, using authorized factory parts. If service is required after the warranty expires, Daikin Company, L.P. also recommends contacting an authorized technician and using authorized factory parts.

Daikin Company, L.P. reserves the right to discontinue, or change at any time, specifications or designs without notice or without incurring obligations.

For assistance within the U.S.A. contact:

Equipment Support
Daikin North America, LLC
19001 Kermier Road
Waller, Texas 77484
855-770-5678-Telephone
713-863-2382-Facsimile

For assistance outside the U.S.A. contact:

International Division
Daikin North America, LLC
19001 Kermier Road
Waller, Texas 77484
713-861-2500-Telephone
713-863-2382-Facsimile

Functional Parts

Part

No: Description:

Part No:	Description:	Part No:	Description:
0130M00025	24V RELAY	0130M00146	TRANSFORMER 480V TO 230V, 150VA (M16, M17, M18, M19, M20, M21, M22, M23, M24, M25, M26, M27, M28)
10735102	BECKETT BURNER (QTY 6)	0130M00145	TRANSFORMER 480V to 24V, 75VA (M16, M17, M18, M19, M20, M21, M22, M23, M24, M25, M26, M27, M28)
B1368056	BELT DRIVE BLOWER WHEEL	0130M00147	TRANSFORMER 575V TO 230V, 150VA (M29, M30)
B3240007	BELT DRIVE MOTOR 1.5 HP (M1, M2, M3, M4, M5, M6, M7, M8, M9, M10, M11, M12, M13, M14, M15, M16, M17, M18, M19, M20, M21, M22, M23, M24, M25, M26, M27, M28)	0130M00148	TRANSFORMER 575V to 24V, 75VA (M29, M30)
0131L00004	BELT DRIVE MOTOR 1.5 HP 575V (M29, M30)		
CAP100000370LA	CAPACITOR 10/370V (M1, M2, M3, M4, M5, M6, M7, M8, M9, M10, M11, M12, M13, M14, M15, M16, M17, M18, M19, M20, M21, M22, M23, M24, M25, M26, M27, M28)		
CAP050000440LA	CAPACITOR 5/440V (M29, M30)		
ZP61KCETF5130	COMPRESSOR 61500, 200/230/60/3 (M1, M2, M3, M4, M5, M6, M7, M8, M9, M10, M11, M12, M13, M14, M15)		
ZP61KCETFD130	COMPRESSOR 61500, 460/60/3 (M16, M17, M18, M19, M20, M21, M22, M23, M24, M25, M26, M27, M28)		
ZP61KCETFE130	COMPRESSOR 61500, 575/60/3 (M29, M30)		
0131M00430	COND MOTOR 1/3 HP, 1 SP, 6 PL (M1, M2, M3, M4, M5, M6, M7, M8, M9, M10, M13, M14, M15)		
0131M00500	COND MOTOR 1/3 HP, OD, LAK (M29, M30)		
CONT3P025024V	CONTACTOR 25 AMP, 3P, 24V (M16, M17, M18, M19, M20, M21, M22, M23, M24, M25, M26, M27, M28, M29, M30)		
CONT3P030024V	CONTACTOR 30 AMP, 3P, 24V (M1, M2, M3, M4, M5, M6, M7, M8, M9, M10, M11, M12, M13, M14, M15)		
0259L00368	CURRENT SWITCH WITH TERMS (M2)		
0130M00074	CUT-OUT SWITCH, HIGH PRESSURE		
0130M00087	CUT-OUT SWITCH, LOW PRESSURE		
PCBCG100	DDC Controller (M2)		
0130L00112	Duct Temp Sensor (M2)		
0164L00010	FAN BELT, NOTCHED		
0150G00004	FAN BLADE (M29, M30)		
B1086765	FAN BLADE TYPE 3 (M1, M2, M3, M4, M5, M6, M7, M8, M9, M10, M11, M12, M13, M14, M15, M16, M17, M18, M19, M20, M21, M22, M23, M24, M25, M26, M27, M28)		
0130F00010	FLAME SENSOR		
0151F00000P	GAS VALVE - WHITE-RODGERS 2-STAGE		
0131M00121	ID COMBUSTION BLOWER		
PCBAG123	IGNITION BOARD, DSI INTEGRATED		
20261709	IGNITOR		
10123532	MANUAL RESET LIMIT 350°F		
0131M00774	MOTOR, 1/3 HP, OD (M16, M17, M18, M19, M21, M22, M23, M24, M25, M26, M27, M28)		
0131L00064	Motor, Cond, 1/3 HP, 208/230V (M11, M12)		
0131L00065	Motor, Cond, 1/3 HP, 460V (M20)		
0130L00108	OD Air Temp Sensor (M2)		
11112501	PRESSURE SWITCH		
0130M00063	PRIMARY LIMIT - GOLD 140°		
0130F00037	PRIMARY LIMIT - GRAY 150°		
0130M00274	TERMINAL BOARD (M2)		
0130M00275	TERMINAL BOARD (M2)		
0130M00038	TERMINAL BOARD		
0130M00138	TRANSFORMER 208/230, 24V (M1, M2, M3, M4, M5, M6, M7, M8, M9, M10, M11, M12, M13, M14, M15)		

Expanded Model Nomenclature

M1 - DCG0721403BAXDAB
M2 - DCG0721403BFXDAB
M3 - DCG0721403BHDDAB
M4 - DCG0721403BHXBAB
M5 - DCG0721403BHXFAB
M6 - DCG0721403BHXXAB
M7 - DCG0721403BJSNAB
M8 - DCG0721403BJXAAB
M9 - DCG0721403BJJUAB
M10 - DCG0721403BVSXAB
M11 - DCG0721403BVXVAB
M12 - DCG0721403BXL CAB
M13 - DCG0721403BXSXAB
M14 - DCG0721403BXXBAB
M15 - DCG0721403BXXXAB
M16 - DCG0721404BAXXAC
M17 - DCG0721404BH SBAC
M18 - DCG0721404BH SFAC
M19 - DCG0721404BH XDAC
M20 - DCG0721404BH XFAC
M21 - DCG0721404BJSFAC
M22 - DCG0721404BJXNAC
M23 - DCG0721404BJJUAC
M24 - DCG0721404BVSXAC
M25 - DCG0721404BWXGAC
M26 - DCG0721404BWXNAC
M27 - DCG0721404BXSXAC
M28 - DCG0721404BXXXAC
M29 - DCG0721407BJS AAB
M30 - DCG0721407BXXXAB

Top Panel and Tubing Assembly

IMAGE 1

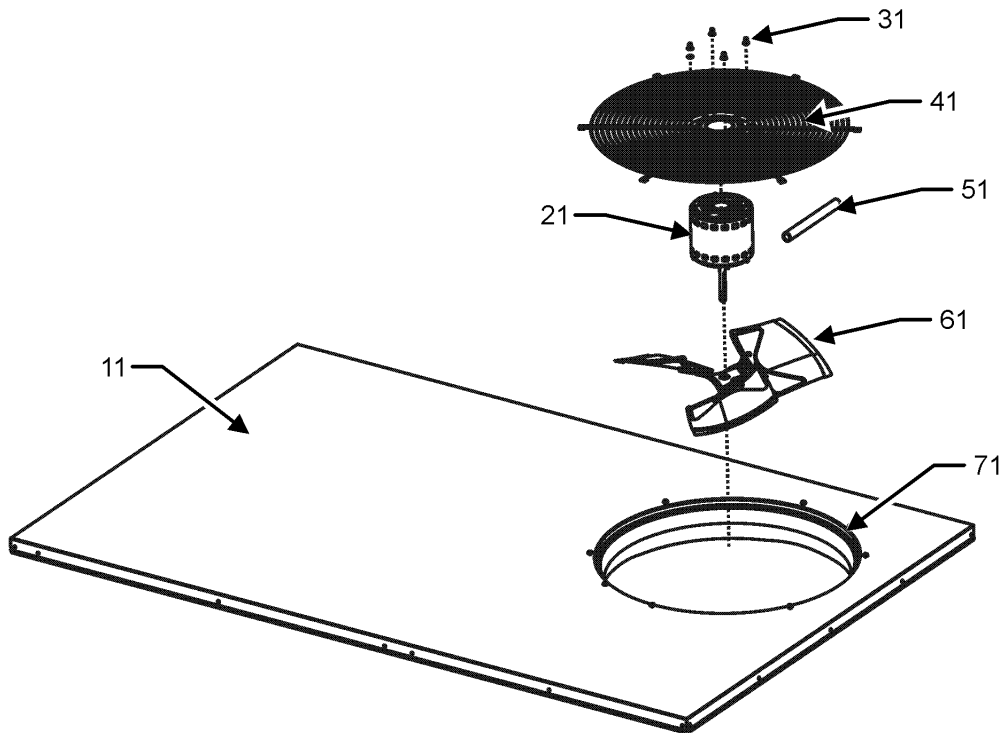
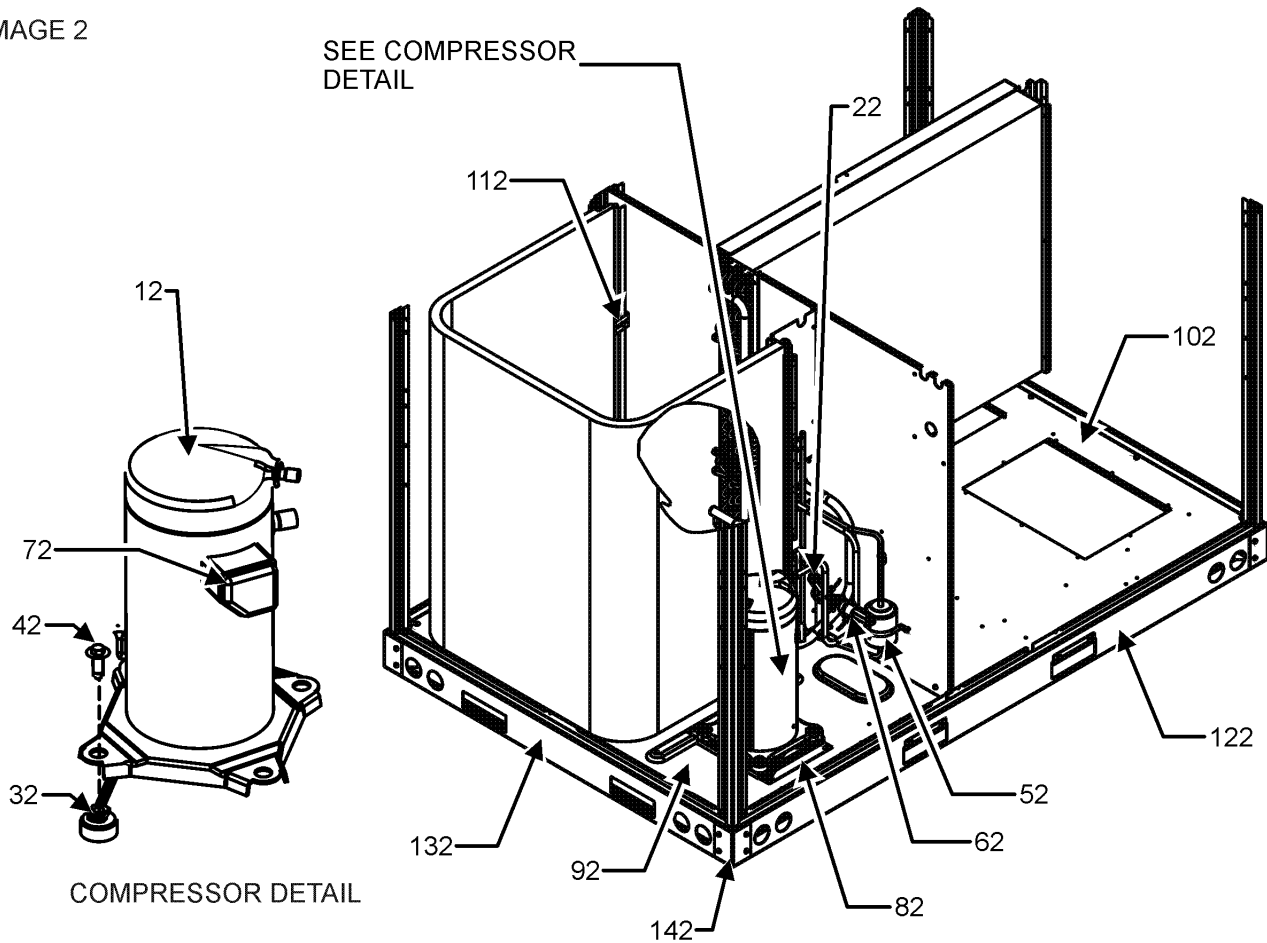


IMAGE 2



Top Panel and Tubing Assembly

Ref. Part No: No:	Description:	Ref. Part No: No:	Description:
Image 1:		Expanded Model Nomenclature	
11	0121L00235NG TOP PANEL	M1	- DCG0721403BAXDAB
21	0131M00430 COND MOTOR 1/3 HP, 1 SP, 6 PL (M1, M2, M3, M4, M5, M6, M7, M8, M9, M10, M13, M14, M15)	M2	- DCG0721403BFXDAB
21	0131M00500 COND MOTOR 1/3 HP, OD, LAK (M29, M30)	M3	- DCG0721403BHDDAB
21	0131M00774 MOTOR, 1/3 HP, OD (M16, M17, M18, M19, M21, M22, M23, M24, M25, M26, M27, M28)	M4	- DCG0721403BHXBAB
21	0131L00064 Motor, Cond, 1/3 HP, 208/230V (M11, M12)	M5	- DCG0721403BHXFAB
21	0131L00065 Motor, Cond, 1/3 HP, 460V (M20)	M6	- DCG0721403BHXXAB
31	0163M00006P ACORN NUT 5/16 HEX BLACK (QTY 4)	M7	- DCG0721403BJSNAB
41	0152G00003 FAN GRILLE (M1, M2, M3, M4, M5, M6, M7, M8, M9, M10, M11, M12, M13, M14, M15, M16, M17, M18, M19, M21, M22, M23, M24, M25, M26, M27, M28, M29, M30)	M8	- DCG0721403BJXAAB
41	0152G00000 FAN GRILLE, RAISED (M20)	M9	- DCG0721403BJXUAB
51	17788000083F PVC CONDUIT 8.25"	M10	- DCG0721403BVSXAB
61	0150G00004 FAN BLADE (M29, M30)	M11	- DCG0721403BVXVAB
61	B1086765 FAN BLADE TYPE 3 (M1, M2, M3, M4, M5, M6, M7, M8, M9, M10, M11, M12, M13, M14, M15, M16, M17, M18, M19, M20, M21, M22, M23, M24, M25, M26, M27, M28)	M12	- DCG0721403BXL CAB
71	0161L00000 VENTURI RING 22"	M13	- DCG0721403BXSXAB
NS	0163M00004 SCREW #10X3/4", BLACK (QTY 8)	M14	- DCG0721403BXXBAB
NS	0163M00005P WASHER, BLACK (.50 OD .218ID) (QTY 4)	M15	- DCG0721403BXXXAB
Image 2:		M16	- DCG0721404BAXXAC
12	ZP61KCETF5130 COMPRESSOR 61500, 200/230/60/3 (M1, M2, M3, M4, M5, M6, M7, M8, M9, M10, M11, M12, M13, M14, M15)	M17	- DCG0721404BHSBAC
12	ZP61KCETFD130 COMPRESSOR 61500, 460/60/3 (M16, M17, M18, M19, M20, M21, M22, M23, M24, M25, M26, M27, M28)	M18	- DCG0721404BH SFAC
12	ZP61KCETFE130 COMPRESSOR 61500, 575/60/3 (M29, M30)	M19	- DCG0721404BHXDAC
22	0130M00087 CUT-OUT SWITCH, LOW PRESSURE	M20	- DCG0721404BHXFAC
32	B1339533 COMPRESSOR GROMMET (QTY 4)	M21	- DCG0721404BJSFAC
42	M0221641 TF SHOULDER SCREW (QTY 4)	M22	- DCG0721404BJXNAC
52	20485201 BI-FLOW FILTER DRIER	M23	- DCG0721404BJXUAC
62	0130M00074 CUT-OUT SWITCH, HIGH PRESSURE	M24	- DCG0721404BVSXAC
72	0159L00065 COMPRESSOR SCROLL HARNESS	M25	- DCG0721404BWXGAC
82	0121L00310 COMPRESSOR MOUNTING PLATE	M26	- DCG0721404BWXNAC
92	0121L01990 BASE PAN-OUTDOOR	M27	- DCG0721404BXSXAC
102	0121L00943 BASE PAN-INDOOR	M28	- DCG0721404BXXXAC
112	0121L00936 BRACKET-HAIRPIN END	M29	- DCG0721407BJS AAB
122	0121L00244RF SIDE RAIL (QTY 2)	M30	- DCG0721407BXXXAB
132	0121L00245 END RAIL (QTY 2)		
142	0121G00301 RAIL CORNER BRACKET (QTY 4)		
NS	B1373315 ACCESS FITTING (QTY 2)		

Cabinet Assembly

IMAGE 1

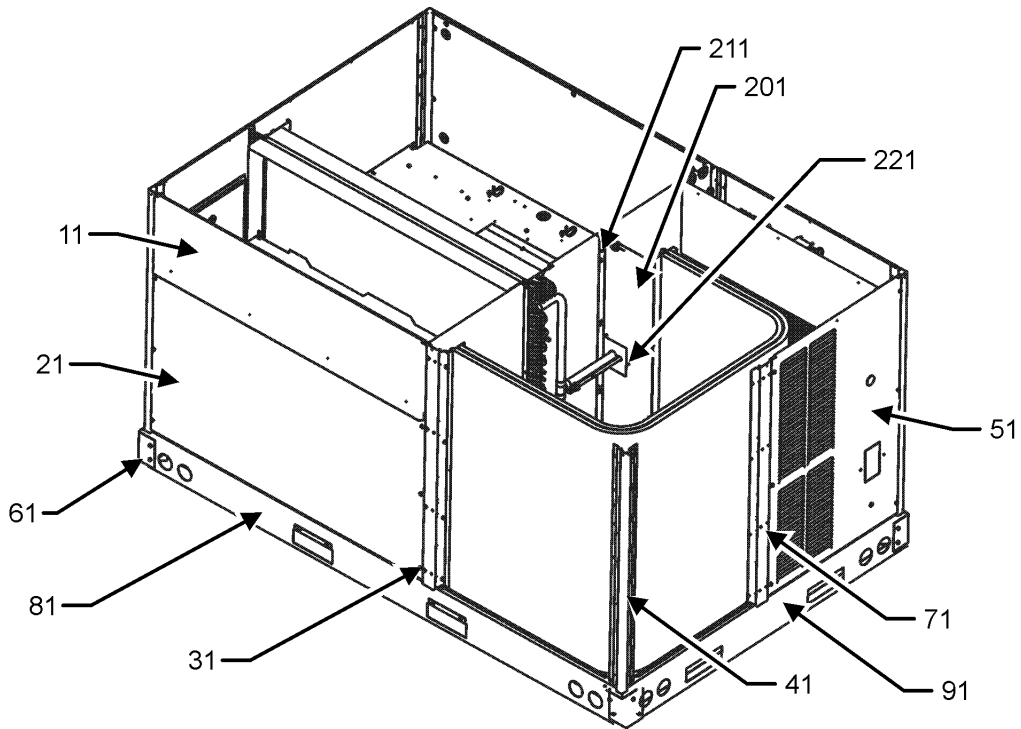
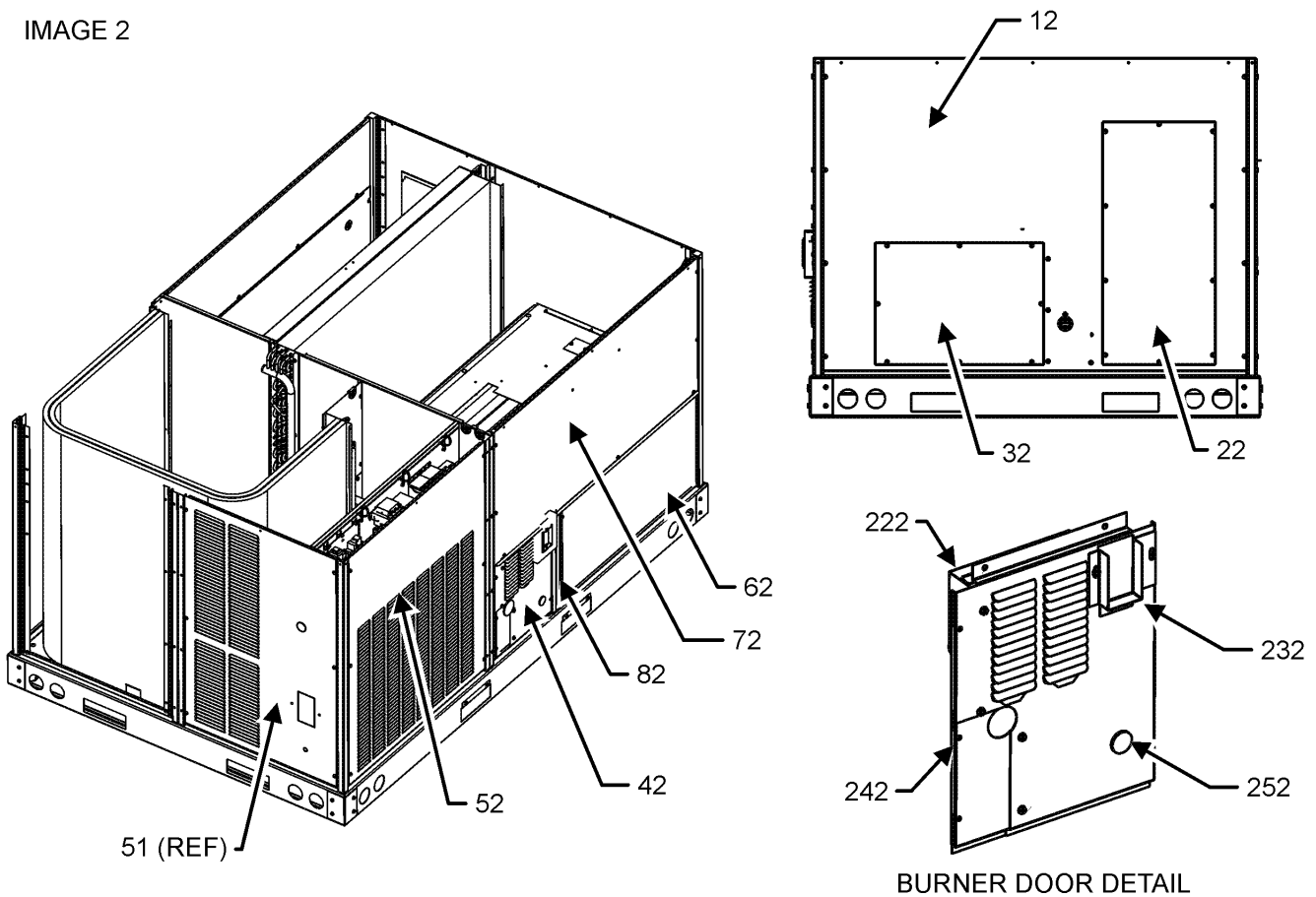


IMAGE 2



Cabinet Assembly

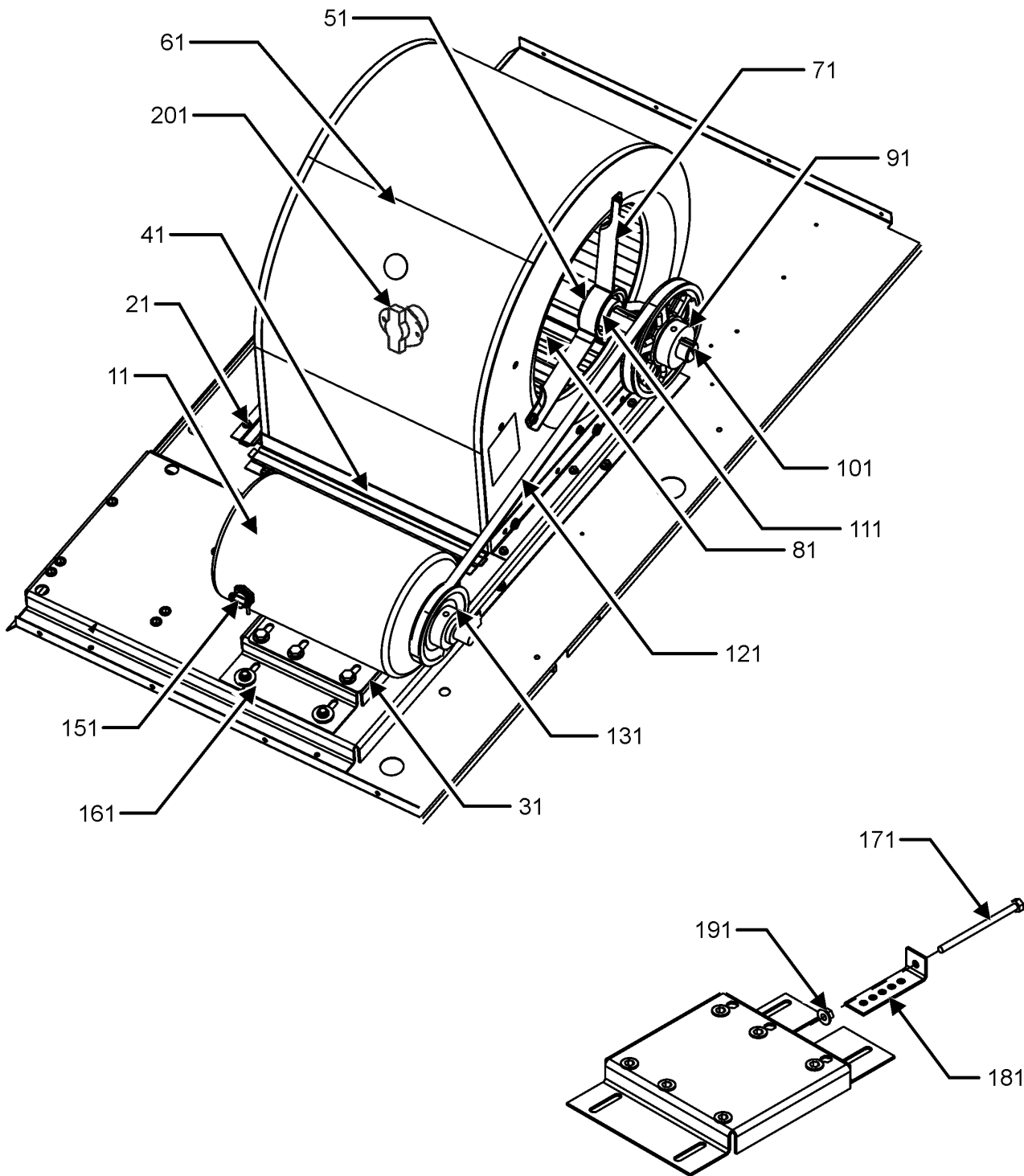
Ref. Part No: No:	Description:	Ref. Part No: No:	Description:
Image 1:		Expanded Model Nomenclature	
11	0121L00982 FILTER DOOR	M1	- DCG0721403BAXDAB
21	0121L00976NG ECONOMIZER DOOR (M2, M3, M4, M5, M6, M10, M11, M12, M13, M14, M15, M17, M18, M19, M20, M24, M25, M26, M27, M28, M30)	M2	- DCG0721403BFXDAB
31	0121L00343RFNG POST-SIDE SUPPORT (QTY 2)	M3	- DCG0721403BHDDAB
41	0121L00344RFNG CORNER POST (QTY 4)	M4	- DCG0721403BHXBAB
41	0121L01383RFNG PNT, ROLL FORMED CORNER POST (M3, M12)	M5	- DCG0721403BHXFAB
51	0121L00354NG LOUVERED COMPRESSOR PANEL (M1, M2, M10, M11, M12, M13, M14, M15, M16, M24, M27, M28, M30)	M6	- DCG0721403BHXXAB
51	0121L00840NG LOUVERED COMPRESSOR PANEL (M3, M4, M5, M6, M7, M8, M9, M17, M18, M19, M20, M21, M22, M23, M25, M26, M29)	M7	- DCG0721403BJSNAB
61	0121G00301 BRACKET-RAIL CORNERS (QTY 4)	M8	- DCG0721403BJXAAB
71	0121L01169RFNG SIDE POST (M1, M2, M4, M5, M6, M7, M8, M9, M10, M11, M13, M14, M15, M16, M17, M18, M19, M20, M21, M22, M23, M24, M25, M26, M27, M28, M29, M30)	M9	- DCG0721403BJXUAB
71	0121L01382RFNG SIDE POST (M3, M12)	M10	- DCG0721403BVSXAB
81	0121L00244RF SIDE RAIL (QTY 2)	M11	- DCG0721403BVXVAB
91	0121L00245 END RAIL (QTY 2)	M12	- DCG0721403BXL CAB
201	0121L00889 BLOCKOFF-CONDENSER	M13	- DCG0721403BXSXAB
211	0121L00349 COND MOUNTING ANGLE	M14	- DCG0721403BXXBAB
221	0121L00939 CONDENSER BLOCKOFF PLATE	M15	- DCG0721403BXXXAB
NS	0121L01309 ECONOMIZER COVER (M1, M7, M8, M9, M16, M21, M22, M23, M29)	M16	- DCG0721404BAXXAC
NS	0164L00009 GASKET-RUBBER, CPOST (QTY 3)	M17	- DCG0721404BHSBAC
NS	0164L00011 GASKET-RUBBER, SIDE POST (QTY 3)	M18	- DCG0721404BH SFAC
12	0121L00342NG DUCT PANEL	M19	- DCG0721404BH XDAC
22	0121L00023NG RETURN DUCT COVER	M20	- DCG0721404BH XFAC
32	0121L00024NG SUPPLY DUCT COVER	M21	- DCG0721404BJS FAC
42	0121L01438NG BURNER DOOR	M22	- DCG0721404BJXNAC
52	0121L01170NG LOUVERED CONTROL PANEL (M1, M2, M4, M5, M6, M7, M8, M9, M10, M11, M13, M14, M15, M16, M17, M18, M19, M20, M21, M22, M23, M24, M25, M26, M27, M28, M29, M30)	M23	- DCG0721404BJXUAC
52	0121L01348NG LOUVERED CONTROL PANEL (M3, M12)	M24	- DCG0721404BV SXAC
62	0121L01108NG HEAT EXCHANGER DOOR	M25	- DCG0721404BW XGAC
72	0121L01172NG BLOWER DOOR	M26	- DCG0721404BW XNAC
82	0121L01110RFNG BURNER POST	M27	- DCG0721404BXSXAC
222	0121L01439 RAIN SHIELD DOOR	M28	- DCG0721404BXXXAC
232	0121L01440NG FLUE COLLAR	M29	- DCG0721407BJS AAB
242	0121L01441NG BURNER DOOR PANEL	M30	- DCG0721407BXXXAB
252	B1392139 VIEW PORT BUSHING-BLOWER DOOR		
NS	0141L00003X FORK BOARD (QTY 2)		
NS	0121L00055 FORK BOARD BRACKET (QTY 4)		
NS	B1910012 GAS LINE GROMMET (M3, M12)		

Evaporator, Condenser and Partition Assy

Ref. Part No: No:	Description:	Ref. Part No: No:	Description:
<i>Image 1:</i>		Expanded Model Nomenclature	
11	0201L00145	CONDENSER COIL ASSY	M1 - DCG0721403BAXDAB
21	0202L00032	TUBING ASSY, EVAP COIL	M2 - DCG0721403BFXDAB
31	0121L00345	BLOCKOFF-EVAPORATOR (M2)	M3 - DCG0721403BHDDAB
31	0121L00398	BLOCKOFF-EVAPORATOR (M2)	M4 - DCG0721403BHXBAB
41	0161L00005	DRAIN PAN	M5 - DCG0721403BHXFAB
51	0121L00357	FILTER ANGLE-VERTICAL (RETURN SIDE)	M6 - DCG0721403BHXXAB
61	0121L00932	FILTER ANGLE-HORIZONTAL (QTY 2)	M7 - DCG0721403BJSNAB
71	0121L01255	ANGLE-FILTER CENTER	M8 - DCG0721403BJAAB
81	0121L00358	FILTER ANGLE-VERTICAL (HAIRPIN SIDE)	M9 - DCG0721403BJXUAB
111	0121L01575	BLOWER DECK	M10 - DCG0721403BVSXAB
151	0121L00243	DECK SIDE CHANNEL	M11 - DCG0721403BVXVAB
161	0121L00293	BACK ANGLE-HEAT EXCHANGER (QTY 2)	M12 - DCG0721403BXL CAB
171	0121L00300	SUPPORT POST-DECK	M13 - DCG0721403BXSXAB
181	0130M00063	PRIMARY LIMIT - GOLD 140°	M14 - DCG0721403BXXBAB
191	0121L00266	HEAT PANEL CHANNEL (QTY 2)	M15 - DCG0721403BXXXAB
321	0163L00071	DRAIN PLUG	M16 - DCG0721404BAXXAC
331	0154L00009	DRAIN PAN GASKET	M17 - DCG0721404BHSBAC
NS	0160L00174	AIR FILTER 16 X 20 X 2 (QTY 4)	M18 - DCG0721404BH SFAC
NS	0121L01377	BLOWER DECK SUPPORT (M3, M12)	M19 - DCG0721404BH XDAC
NS	0121L00238	DRAIN PAN SUPPORT	M20 - DCG0721404BH XFAC
NS	0121L00321	SMOKE DETECTOR COVER	M21 - DCG0721404BJSFAC
			M22 - DCG0721404BJXNAC
			M23 - DCG0721404BJXUAC
			M24 - DCG0721404BVSXAC
			M25 - DCG0721404BWXGAC
			M26 - DCG0721404BWXNAC
			M27 - DCG0721404BXSXAC
			M28 - DCG0721404BXXXAC
			M29 - DCG0721407BJS AAB
			M30 - DCG0721407BXXXAB

Belt Drive Blower Assembly

BELT DRIVE ASSEMBLY



MOUNTING PLATE ASSEMBLY

Belt Drive Blower Assembly

**Ref. Part
No: No:**

Description:

**Ref. Part
No: No:**

Description:

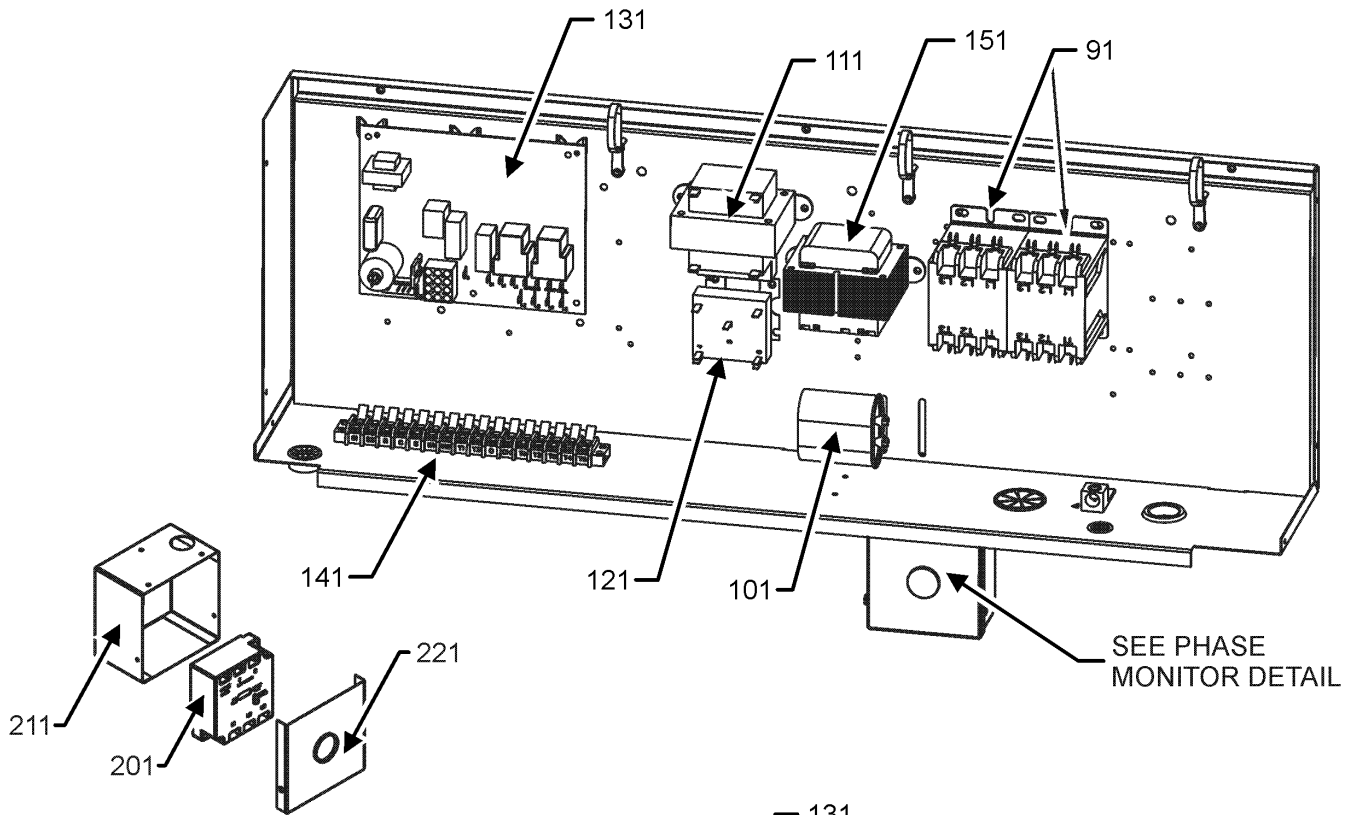
Image 1:

11	B3240007	BELT DRIVE MOTOR 1.5 HP (M1, M2, M3, M4, M5, M6, M7, M8, M9, M10, M11, M12, M13, M14, M15, M16, M17, M18, M19, M20, M21, M22, M23, M24, M25, M26, M27, M28)
11	0131L00004	BELT DRIVE MOTOR 1.5 HP 575V (M29, M30)
21	0121L00297	BLOWER SIDE ANGLE (QTY 3)
31	0121L01619	MOTOR BASE
41	0121L00281	BLOWER MOUNTING ANGLE
51	0163L00005	BELT DRIVE BLOWER SHAFT
61	2539302F	BLOWER HOUSING 11 X 10
71	B3201300	MOUNTING BRACKET BEARING (QTY 2)
81	B1368056	BELT DRIVE BLOWER WHEEL
91	0163L00136	SHEAVE, FIXED AK59H
101	B1398604	STEEL KEY (000158812) 2.0"
111	B1399500	BALL BEARING 1.00" (QTY 2)
121	0164L00010	FAN BELT, NOTCHED
131	B2120001	VARIABLE PITCH SHEAVE 1VL44 X 3/8" (M29, M30)
131	B2120014	VARIABLE PITCH SHEAVE 1VL44 X 7/8" (M1, M2, M3, M4, M5, M6, M7, M8, M9, M10, M11, M12, M13, M14, M15, M16, M17, M18, M19, M20, M21, M22, M23, M24, M25, M26, M27, M28)
151	B1393726	ELECT. CONNECTING BUSHING
161	B1393738	BOLT 1/4-20 X 3/4" (QTY 4)
171	0163M00045	BOLT 1/4-20 X 4"
181	3225000F	BELT TIGHTENER ANGLE
191	B1393023	NUT / LOCK .25-20
201	0130F00037	PRIMARY LIMIT - GRAY 150°
NS	1864703F	BLOWER CUT-OFF
NS	B1398603	STEEL KEY (000158812) 4.5"

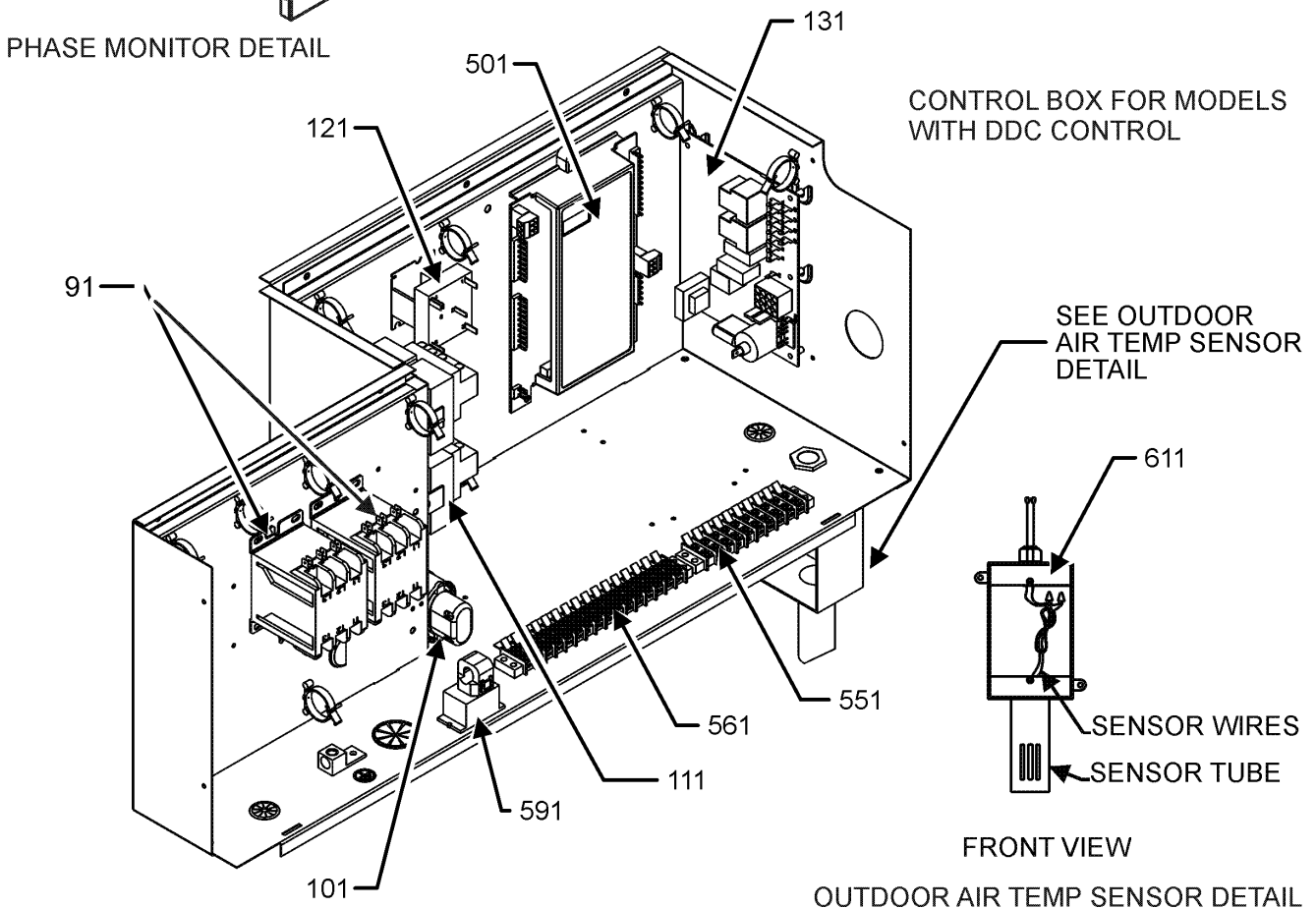
Expanded Model Nomenclature

M1 - DCG0721403BAXDAB
M2 - DCG0721403BFXDAB
M3 - DCG0721403BHDDAB
M4 - DCG0721403BHXBAB
M5 - DCG0721403BHXFAB
M6 - DCG0721403BHXXAB
M7 - DCG0721403BJSNAB
M8 - DCG0721403BJXAAB
M9 - DCG0721403BJXUAB
M10 - DCG0721403BVSXAB
M11 - DCG0721403BVXVAB
M12 - DCG0721403BXLACAB
M13 - DCG0721403BXSXAB
M14 - DCG0721403BXXBAB
M15 - DCG0721403BXXXAB
M16 - DCG0721404BAXXAC
M17 - DCG0721404BHSBAC
M18 - DCG0721404BHSFAC
M19 - DCG0721404BHxDAC
M20 - DCG0721404BHXFAC
M21 - DCG0721404BJSFAC
M22 - DCG0721404BJXNAC
M23 - DCG0721404BJXUAC
M24 - DCG0721404BVSXAC
M25 - DCG0721404BWXGAC
M26 - DCG0721404BWXNAC
M27 - DCG0721404BXSXAC
M28 - DCG0721404BXXXAC
M29 - DCG0721407BJSAAAB
M30 - DCG0721407BXXXAB

Control Box Assembly



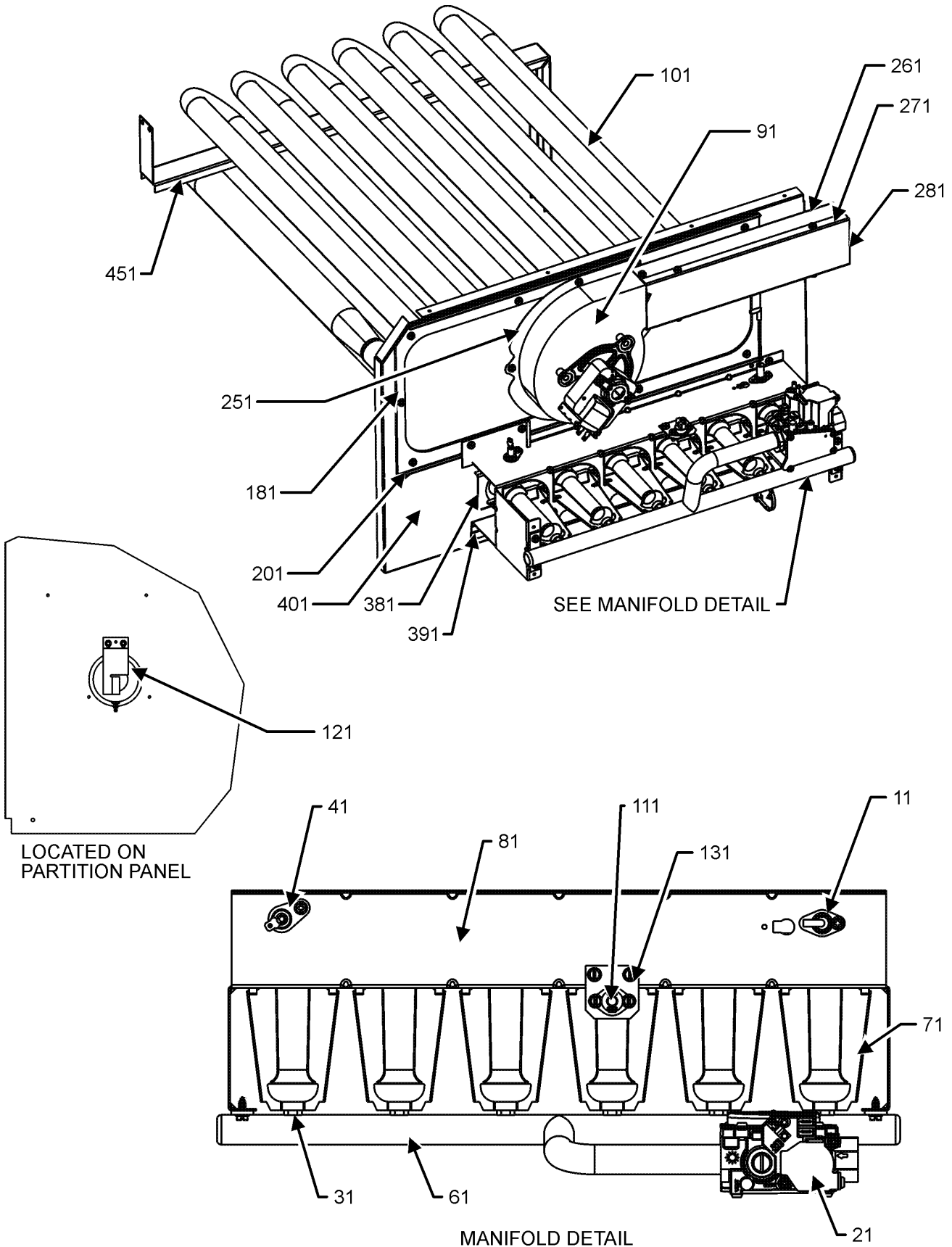
PHASE MONITOR DETAIL



Control Box Assembly

Ref. Part No: No:	Description:	Ref. Part No: No:	Description:
Image 1:		Expanded Model Nomenclature	
91	CONT3P025024V CONTACTOR 25 AMP, 3P, 24V (M16, M17, M18, M19, M20, M21, M22, M23, M24, M25, M26, M27, M28, M29, M30)	M1 - DCG0721403BAXDAB	
91	CONT3P030024V CONTACTOR 30 AMP, 3P, 24V (M1, M2, M3, M4, M5, M6, M7, M8, M9, M10, M11, M12, M13, M14, M15)	M2 - DCG0721403BFXDAB	
101	CAP100000370LA CAPACITOR 10/370V (M1, M2, M3, M4, M5, M6, M7, M8, M9, M10, M11, M12, M13, M14, M15, M16, M17, M18, M19, M20, M21, M22, M23, M24, M25, M26, M27, M28)	M3 - DCG0721403BHDDAB	
101	CAP050000440LA CAPACITOR 5/440V (M29, M30)	M4 - DCG0721403BHXBAB	
111	0130M00138 TRANSFORMER 208/230, 24V (M1, M2, M3, M4, M5, M6, M7, M8, M9, M10, M11, M12, M13, M14, M15)	M5 - DCG0721403BHXFAB	
111	0130M00145 TRANSFORMER 480V to 24V, 75VA (M16, M17, M18, M19, M20, M21, M22, M23, M24, M25, M26, M27, M28)	M6 - DCG0721403BHXXAB	
111	0130M00148 TRANSFORMER 575V to 24V, 75VA (M29, M30)	M7 - DCG0721403BJSNAB	
121	0130M00025 24V RELAY	M8 - DCG0721403BJXAAB	
131	PCBAG123 IGNITION BOARD, DSI INTEGRATED	M9 - DCG0721403BJXUAB	
141	0130M00038 TERMINAL BOARD	M10 - DCG0721403BVSXAB	
151	0130M00146 TRANSFORMER 480V TO 230V, 150VA (M16, M17, M18, M19, M20, M21, M22, M23, M24, M25, M26, M27, M28)	M11 - DCG0721403BVXVAB	
151	0130M00147 TRANSFORMER 575V TO 230V, 150VA (M29, M30)	M12 - DCG0721403BXL CAB	
201	0130L00105 PHASE MONITOR (M12)	M13 - DCG0721403BXSXAB	
211	0121L01468 CONTROL, PH MON BOX (M12)	M14 - DCG0721403BXXBAB	
221	0121L01467 CONTROL, PH MON LID (M12)	M15 - DCG0721403BXXXAB	
501	PCBCG100 DDC Controller (M2)	M16 - DCG0721404BAXXAC	
551	0130M00274 TERMINAL BOARD (M2)	M17 - DCG0721404BHSBAC	
561	0130M00275 TERMINAL BOARD (M2)	M18 - DCG0721404BH SFAC	
591	0259L00368 CURRENT SWITCH WITH TERMS (M2)	M19 - DCG0721404BHXDAC	
611	0130L00108 OD Air Temp Sensor (M2)	M20 - DCG0721404BHXFAC	
NS	20520901 CAPACITOR STRAP	M21 - DCG0721404BJSFAC	
NS	20520901 CAPACITOR STRAP	M22 - DCG0721404BJXNAC	
NS	0259L00074 CONTROL HARNESS (M1, M2, M3, M4, M5, M6, M7, M8, M9, M10, M11, M12, M13, M14, M15)	M23 - DCG0721404BJXUAC	
NS	0259L00075 CONTROL HARNESS (M16, M17, M18, M19, M20, M21, M22, M23, M24, M25, M26, M27, M28, M29, M30)	M24 - DCG0721404BVSXAC	
NS	0130L00112 Duct Temp Sensor (M2)	M25 - DCG0721404BWXGAC	
NS	0259L00179 HARNESS, ECONOMIZER	M26 - DCG0721404BWXNAC	
NS	0259L00128 HARNESS, WIRING	M27 - DCG0721404BXSXAC	
NS	0259L00075 HARNESS-CONTROL (M16, M17, M18, M19, M20, M21, M22, M23, M24, M25, M26, M27, M28, M29, M30)	M28 - DCG0721404BXXXAC	
NS	0130L00107 ROOM SENSOR (M2)	M29 - DCG0721407BJS AAB	
NS	0259L00427 WIRE ASSY (M12)	M30 - DCG0721407BXXXAB	
NS	0259L00428 WIRE ASSY (M12)		
NS	0259L00500 WIRE HARNESS (M2)		
NS	0259L00090 WIRE HARNESS-SMOKE DETECTOR (M1, M3, M7, M9, M11, M19, M22, M23, M25, M26)		
NS	0259L00054 WIRING HARNESS		
NS	0259L00069 WIRING HARNESS		
NS	0259L00070 WIRING HARNESS (M11, M12)		
NS	0259L00071 WIRING HARNESS (M20)		
NS	0259L00094 WIRING HARNESS		

Heat Exchanger Assembly



Heat Exchanger Assembly

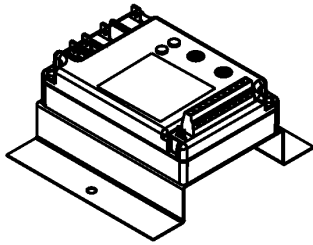
Ref. Part No:	Description:	Ref. Part No:	Description:
Image 1:		Expanded Model Nomenclature	
11	20261709 IGNITOR	M1	DCG0721403BAXDAB
21	0151F00000P GAS VALVE - WHITE-RODGERS 2-STAGE	M2	DCG0721403BFXDAB
31	0163F00018 ORIFICE (QTY 6)	M3	DCG0721403BHDDAB
41	0130F00010 FLAME SENSOR	M4	DCG0721403BHXBAB
61	0163L00025 MANIFOLD - 6 BRNR	M5	DCG0721403BHXFAB
71	10735102 BECKETT BURNER (QTY 6)	M6	DCG0721403BHXXAB
81	0121F00145 BURNER BRACKET 6B	M7	DCG0721403BJSNAB
91	0131M00121 ID COMBUSTION BLOWER	M8	DCG0721403BJXAAB
101	0270L00072 PART/TUBE ASSY 6B (M1, M2, M3, M4, M5, M6, M8, M9, M11, M14, M15, M16, M19, M20, M22, M23, M25, M26, M28, M30)	M9	DCG0721403BJXUAB
101	0270L00104 PART/TUBE ASSY 6B (M7, M10, M12, M13, M17, M18, M21, M24, M27, M29)	M10	DCG0721403BVSXAB
111	10123532 MANUAL RESET LIMIT 350°F	M11	DCG0721403BVXVAB
121	11112501 PRESSURE SWITCH	M12	DCG0721403BXL CAB
131	0121L00053 FLAME ROLLOUT BRACKET	M13	DCG0721403BXSXAB
181	0154L00017 ID BLOWER PLATE GASKET 6 BRNR	M14	DCG0721403BXXBAB
201	0121L00241 ID BLOWER PLATE	M15	DCG0721403BXXXAB
251	0154L00020 ID BLOWER GASKET	M16	DCG0721404BAXXAC
261	0121L00277 FLUE CHANNEL	M17	DCG0721404BHSBAC
271	0121L00278 FLUE SIDE COVER	M18	DCG0721404BH SFAC
281	0163L00072 SCREEEN-FLUE	M19	DCG0721404BH XDAC
381	11072205 ORIFICE SHIELD	M20	DCG0721404BH XFAC
391	0121L00267 BURNER SLIDE BRACKET	M21	DCG0721404BJSFAC
401	0121L00268 RETAINER-BURNER ASSY	M22	DCG0721404BJXNAC
451	0121L00325 BRACKET-HEAT EXCHANGER	M23	DCG0721404BJXUAC
NS	A3468601 PRESSURE SWITCH HOSE	M24	DCG0721404BVSXAC
		M25	DCG0721404BWXGAC
		M26	DCG0721404BWXNAC
		M27	DCG0721404BXSXAC
		M28	DCG0721404BXXXAC
		M29	DCG0721407BJS AAB
		M30	DCG0721407BXXXAB

Accessory Parts List

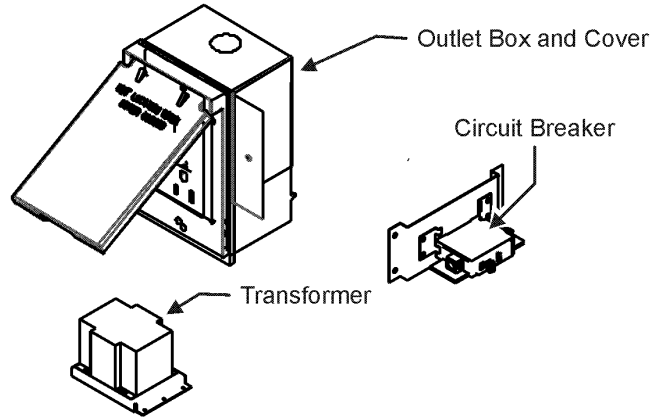
ACCESSORY PARTS LIST

NOTE: NOT ALL OPTIONS AVAILABLE FOR ALL PRODUCTS

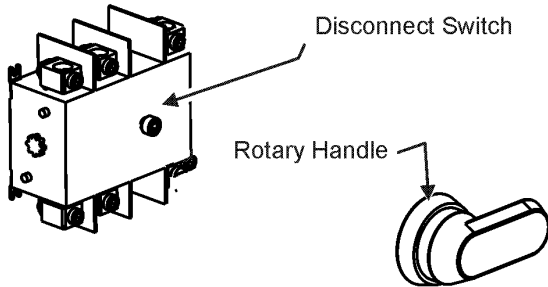
1 LOW AMBIENT KITS



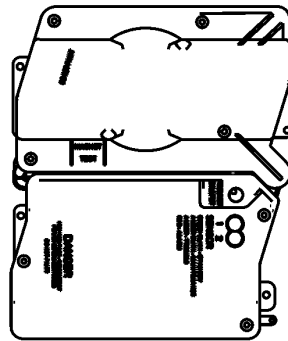
2 GFCI CONVENIENCE OUTLET



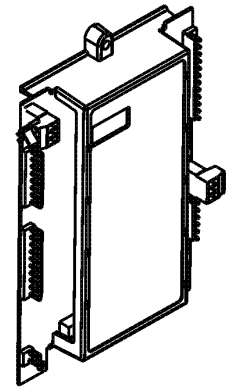
3 DISCONNECT MODULE (NON-FUSED)



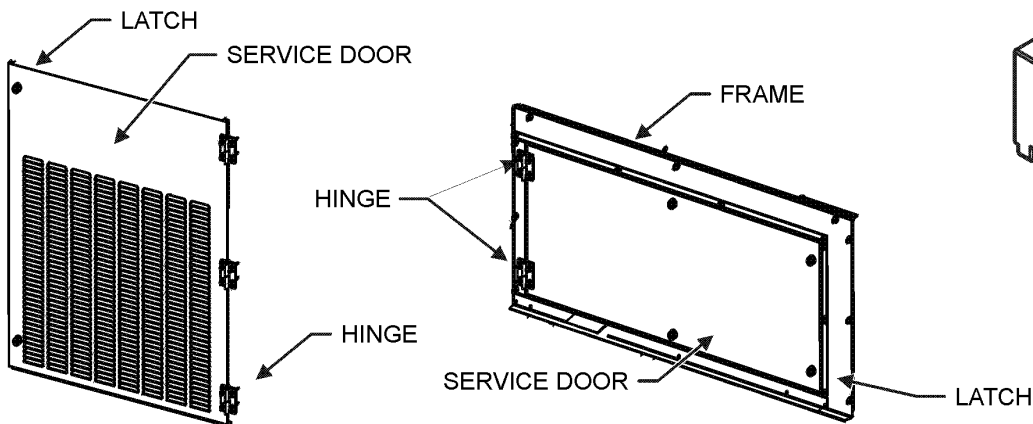
4 SMOKE DETECTORS



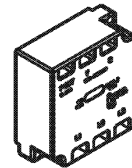
5 DDC CONTROL



6 HINGED DOOR ASSEMBLIES



7 PHASE MONITOR



Accessory Parts List

Ref. Part No:	Description:	Ref. Part No:	Description:
Image 1:		Expanded Model Nomenclature	
NS 1036609C	3-6 TON DFLOW ECONOMIZER (M1, M7, M8, M9, M16, M21, M22, M23, M29)	M1 - DCG0721403BAXDAB	
NS DDNECNJ3672C	3-6 TON DFLOW ECONOMIZER (M10, M11, M24, M25, M26)	M2 - DCG0721403BFXDAB	
NS 10366D09C	3-6 TON DFLOW ECONOMIZER, DDC (M2)	M3 - DCG0721403BHDDAB	
NS 0121L01381NG	BLOWER DOOR FRAME (M3, M12)	M4 - DCG0721403BHXBAB	
NS 0121L01379NG	BLOWER SERVICE DOOR, BACK (M3, M12)	M5 - DCG0721403BHXFAB	
NS 0121L01378NG	BLOWER SERVICE DOOR, FRONT (M3, M12)	M6 - DCG0721403BHXXAB	
NS 0121L00316	BRACKET-CONV OUTLET MOUNT (M4, M5, M7, M8, M9, M14, M17, M18, M20, M21, M23, M25, M26, M29)	M7 - DCG0721403BJSNAB	
NS 0121L00835	BRACKET-DISCONNECT SWITCH (M3, M4, M5, M6, M7, M8, M9, M17, M18, M19, M20, M21, M22, M23, M25, M26, M29)	M8 - DCG0721403BJXAAB	
NS 0121L01934	BRACKET-SMOKE DETECTOR (M2)	M9 - DCG0721403BJXUAB	
NS 0130M00065	CIRCUIT BREAKER, CONVENIENCE OUTLET (M4, M7, M14, M17, M22, M26)	M10 - DCG0721403BVSXAB	
NS 0121L00837NG	DISCONNECT COVER (M3, M4, M5, M6, M7, M8, M9, M17, M18, M19, M20, M21, M22, M23, M25, M26, M29)	M11 - DCG0721403BVXVAB	
NS 0130L00012	GANG BOX-GFCI OUTLET (M4, M5, M7, M8, M9, M14, M17, M18, M20, M21, M22, M23, M25, M26, M29)	M12 - DCG0721403BXL CAB	
NS 0130L00039	HANDLE, ROTARY (M3, M4, M5, M6, M7, M8, M9, M17, M18, M19, M20, M21, M22, M23, M25, M26, M29)	M13 - DCG0721403BXSXAB	
NS 0163M00307	HINGE, LEFT HAND (M3, M12)	M14 - DCG0721403BXXBAB	
NS 0163M00308	HINGE, RIGHT HAND (M3, M12)	M15 - DCG0721403BXXXAB	
NS 0163M00322	LATCH (M3, M12)	M16 - DCG0721404BAXXAC	
NS 0121L01348NG	LOUVERED CP SERVICE DOOR (M3, M12)	M17 - DCG0721404BHSBAC	
NS 0130M00058	LOW AMBIENT KIT (M11, M12, M20)	M18 - DCG0721404BH SFAC	
NS LAKT01	LOW AMBIENT KIT (M5, M9, M18, M21, M23)	M19 - DCG0721404BH XDAC	
NS 0161G00012	POWER OUTLET BOX (M4, M5, M7, M8, M9, M14, M17, M18, M20, M21, M22, M23, M25, M26, M29)	M20 - DCG0721404BH XFAC	
NS 0130L00103	RECEPTACLE-GFCI OUTLET (M4, M5, M7, M8, M9, M14, M17, M18, M20, M21, M22, M23, M25, M26, M29)	M21 - DCG0721404BJSFAC	
NS 0130L00042	SHAFT, CUT (M3, M4, M5, M6, M7, M8, M9, M17, M18, M19, M20, M21, M22, M23, M25, M26, M29)	M22 - DCG0721404BJXNAC	
NS 0130L00049	SHAFT, DISCONNECT (M3, M4, M5, M6, M7, M8, M9, M17, M18, M19, M20, M21, M22, M23, M25, M26, M29)	M23 - DCG0721404BJXUAC	
NS D4120	SMOKE DETECTOR, PHOTO 4WIRE (M2)	M24 - DCG0721404BVSXAC	
NS 0130L00046	SWITCH-DISCONNECT 60A (M3, M4, M5, M6, M7, M8, M9, M17, M18, M19, M20, M21, M22, M23, M25, M26, M29)	M25 - DCG0721404BWXGAC	
NS 0130M00061	TRANSFORMER, CONVENIENCE OUTLET (M4, M7, M14, M17, M22, M26)	M26 - DCG0721404BWXNAC	
		M27 - DCG0721404BXSXAC	
		M28 - DCG0721404BXXXAC	
		M29 - DCG0721407BJS AAB	
		M30 - DCG0721407BXXXAB	