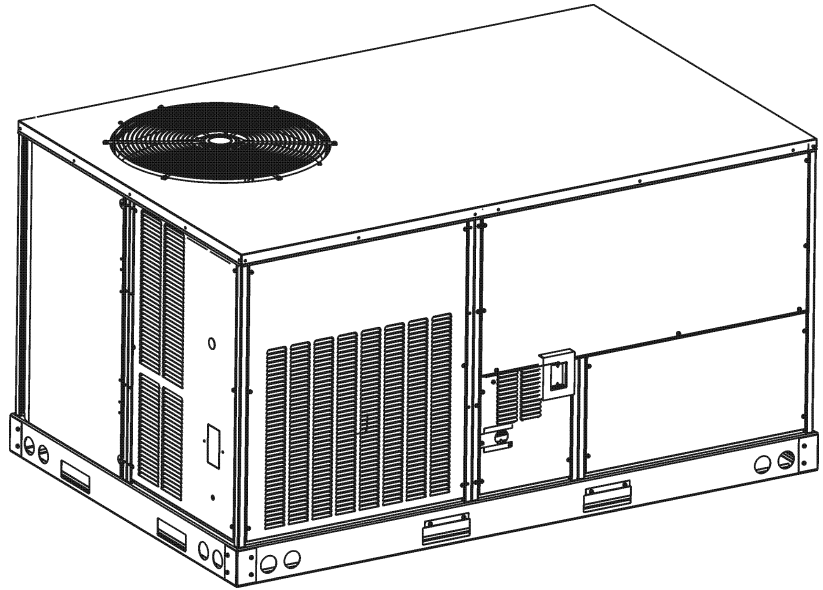


Commercial 6 Ton 2-Speed Package Gas Units

DCG0720903VAXXAA
DCG0720903VXXXAA
DCG0720904VXXXAA
DCG0720907VXXXAA
DCG0721153VVSCAA
DCG0721153VXXXAA
DCG0721154VXXXAA
DCG0721157VXXXAA
DCG0721403V1DDAA
DCG0721403VHDDAA
DCG0721403VHKPAA
DCG0721403VHXAAA
DCG0721403VHXBAA
DCG0721403VRLTAA
DCG0721403VVSXAA
DCG0721403VVXDAA
DCG0721403VWXFAA
DCG0721403VWXOAA
DCG0721403VWXXAA
DCG0721403VXSXAA
DCG0721403VXXQAA
DCG0721403VXXXAA
DCG0721404VAXXAA
DCG0721404VAXZAA
DCG0721404VBXXAA
DCG0721404VHDXAA
DCG0721404VWXJAA
DCG0721404VXXTAA
DCG0721404VXXXAA
DCG0721407VXXXAA



This manual is to be used by qualified technicians only.

This manual replaces RP-D1092H.

Important Information

Index

Functional Parts List	3
Illustration and Parts	4 - 17

Views shown are for parts illustrations only, not servicing procedures

7/28/22 - added 0251L00000 EXPANSION VALVE ASSY

Text Codes:

AR - As Required

NA - Not Available

NS - Not Shown

00000000 - See Note

QTY - Quantity Example (QTY 3) (If Quantity not shown, Quantity = 1)

M - Model Example (M1) (If M Code not shown, then part is used on all Models)

Expanded Model Nomenclature:

Example M1 - Model#1 M2 - Model#2 M3 - Model#3

Daikin Company, L.P. is not responsible for personal injury or property damage resulting from improper service. Review all service information before beginning repairs.

Warranty service must be performed by an authorized technician, using authorized factory parts. If service is required after the warranty expires, Daikin Company, L.P. also recommends contacting an authorized technician and using authorized factory parts.

Daikin Company, L.P. reserves the right to discontinue, or change at any time, specifications or designs without notice or without incurring obligations.

For assistance within the U.S.A. contact:

Equipment Support
Daikin North America, LLC
19001 Kermier Road
Waller, Texas 77484
855-770-5678-Telephone
713-863-2382-Facsimile

For assistance outside the U.S.A. contact:

International Division
Daikin North America, LLC
19001 Kermier Road
Waller, Texas 77484
713-861-2500-Telephone
713-863-2382-Facsimile

Functional Parts

Part

No: Description:

Part No:	Description:	Part No:	Description:
0130M00025	24V RELAY	0130M00144	TRANSFORMER (M1, M2, M5, M6, M9, M10, M11, M12, M13, M14, M15, M16, M17, M18, M19, M20, M21, M22)
10735102	BECKETT BURNER (QTY 4)	0130M00144	TRANSFORMER (M1, M2, M5, M6, M9, M10, M11, M12, M14, M15, M16, M17, M18, M19, M20, M21, M22)
B1368056	BELT DRIVE BLOWER WHEEL	0130M00138	TRANSFORMER 208/230, 24V (M13)
CAP100000370LA	CAPACITOR 10/370V (M1, M2, M3, M5, M6, M7, M9, M10, M11, M12, M13, M14, M15, M16, M17, M18, M19, M20, M21, M22, M23, M24, M25, M26, M27, M28, M29)	0130M00146	TRANSFORMER 480V TO 230V, 150VA (M3, M7, M23, M24, M26, M27, M28, M29)
CAP050000440LA	CAPACITOR 5/440V (M4, M8, M30)	0130M00145	TRANSFORMER 480V to 24V, 75VA (M3, M7, M23, M24, M25, M26, M27, M28, M29)
ZPS60K5ETFD130	COMP, 60900, 460/60/3 2 STAGE (M3, M7, M23, M24, M25, M26, M27, M28, M29)	0130M00145	TRANSFORMER 480V to 24V, 75VA (M25)
ZPS60K5ETF5130	COMP, 61000, 200/230/60/3 2 ST (M1, M2, M5, M6, M9, M10, M11, M12, M13, M14, M15, M16, M17, M18, M19, M20, M21, M22)	0130M00147	TRANSFORMER 575V TO 230V, 150VA (M4, M8, M30)
ZPS60K5ETFE130	COMP, 61000, 575/60/3 2 STAGE (M4, M8, M30)	0130M00148	TRANSFORMER 575V to 24V, 75VA (M4, M8, M30)
0131M00430	COND MOTOR 1/3 HP, 1 SP, 6 PL (M1, M2, M6, M9, M10, M11, M12, M13, M14, M15, M17, M18, M19, M21, M22)	Expanded Model Nomenclature	
0131M00500	COND MOTOR 1/3 HP, OD, LAK (M4, M8, M30)	M1 - DCG0720903VAXXAA	
CONT3P025024V	CONTACTOR 25 AMP, 3P, 24V (M3, M4, M7, M8, M23, M24, M25, M26, M27, M28, M29, M30)	M2 - DCG0720903VXXXAA	
CONT3P030024V	CONTACTOR 30 AMP, 3P, 24V (M1, M2, M5, M6, M9, M10, M11, M12, M13, M14, M15, M16, M17, M18, M19, M20, M21, M22)	M3 - DCG0720904VXXXAA	
0130M00074	CUT-OUT SWITCH, HIGH PRESSURE	M4 - DCG0720907VXXXAA	
0130M00087	CUT-OUT SWITCH, LOW PRESSURE	M5 - DCG0721153VVSCAA	
0130L00112	Duct Temp Sensor (M13, M25)	M6 - DCG0721153VXXXAA	
0164L00010	FAN BELT, NOTCHED	M7 - DCG0721154VXXXAA	
0150G00004	FAN BLADE (M4, M8, M30)	M8 - DCG0721157VXXXAA	
B1086765	FAN BLADE TYPE 3 (M1, M2, M3, M5, M6, M7, M9, M10, M11, M12, M13, M14, M15, M16, M17, M18, M19, M20, M21, M22, M23, M24, M25, M26, M27, M28, M29)	M9 - DCG0721403VHDDAA	
0130F00010	FLAME SENSOR	M10 - DCG0721403VHKPAA	
0151F00000P	GAS VALVE - WHITE-RODGERS 2-STAGE	M11 - DCG0721403VHXAAA	
0131M00121	ID COMBUSTION BLOWER	M12 - DCG0721403VHXBAA	
PCBAG123	IGNITION BOARD, DSI INTEGRATED	M13 - DCG0721403VRLTAA	
20261709	IGNITOR	M14 - DCG0721403VV SXAA	
10123532	MANUAL RESET LIMIT 350°F	M15 - DCG0721403VVXDAA	
0131L00041	MOTOR 2 HP BELT DRIVE 208-230V (M1, M2, M5, M6, M9, M10, M11, M12, M13, M14, M15, M16, M17, M18, M19, M20, M21, M22)	M16 - DCG0721403VWXFAA	
0131L00043	MOTOR 2HP BELT DRIVE 460V (M3, M7, M23, M24, M25, M26, M27, M28, M29)	M17 - DCG0721403VWXOAA	
0131L00042	MOTOR 2HP BELT DRIVE 575V (M4, M8, M30)	M18 - DCG0721403VWX XAA	
0131M00774	MOTOR, 1/3 HP, OD (M3, M7, M23, M24, M25, M26, M27, M28, M29)	M19 - DCG0721403VXS XAA	
0130L00108	OUTDOOR AIR TEMP SENSOR-OE250-G (M13, M25)	M20 - DCG0721403VXXQAA	
PCBCG100	PCB,CONTROL,HP,GAS (M13, M25)	M21 - DCG0721403VXX XAA	
0130L00105	PHASE MONITOR (M13)	M22 - DCG0721403V1DDAA	
11112501	PRESSURE SWITCH	M23 - DCG0721404VAX XAA	
0130M00063	PRIMARY LIMIT - GOLD 140° (M5, M6, M7, M8, M9, M10, M11, M12, M13, M14, M15, M16, M17, M18, M19, M20, M21, M22, M23, M24, M25, M26, M27, M28, M29, M30)	M24 - DCG0721404VAX ZAA	
0130F00037	PRIMARY LIMIT - GRAY 150°	M25 - DCG0721404VBX XAA	
20162906	PRIMARY LIMIT - WHITE (M1, M2, M3, M4)	M26 - DCG0721404VHD XAA	
10135604	RELAY (QTY 2)	M27 - DCG0721404VWX JAA	
0130L00107	ROOM SENSOR (M13, M25)	M28 - DCG0721404VXX TAA	
0130M00240	TERMINAL BOARD	M29 - DCG0721404VXX XAA	
		M30 - DCG0721407VXX XAA	

Top Panel and Tubing Assembly

IMAGE 1

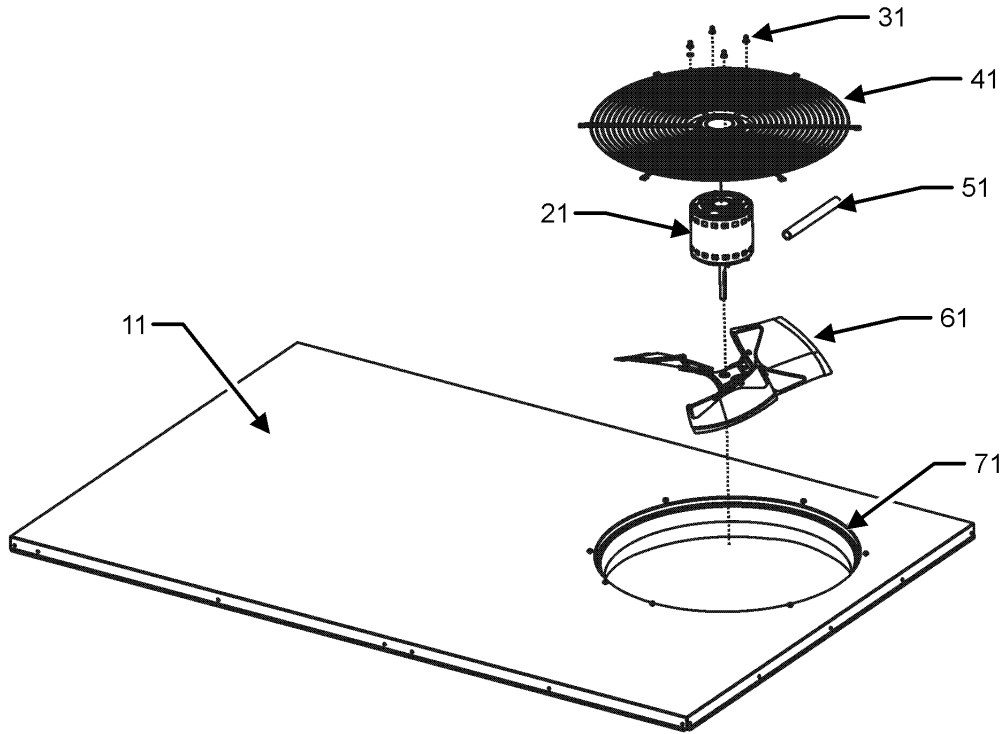
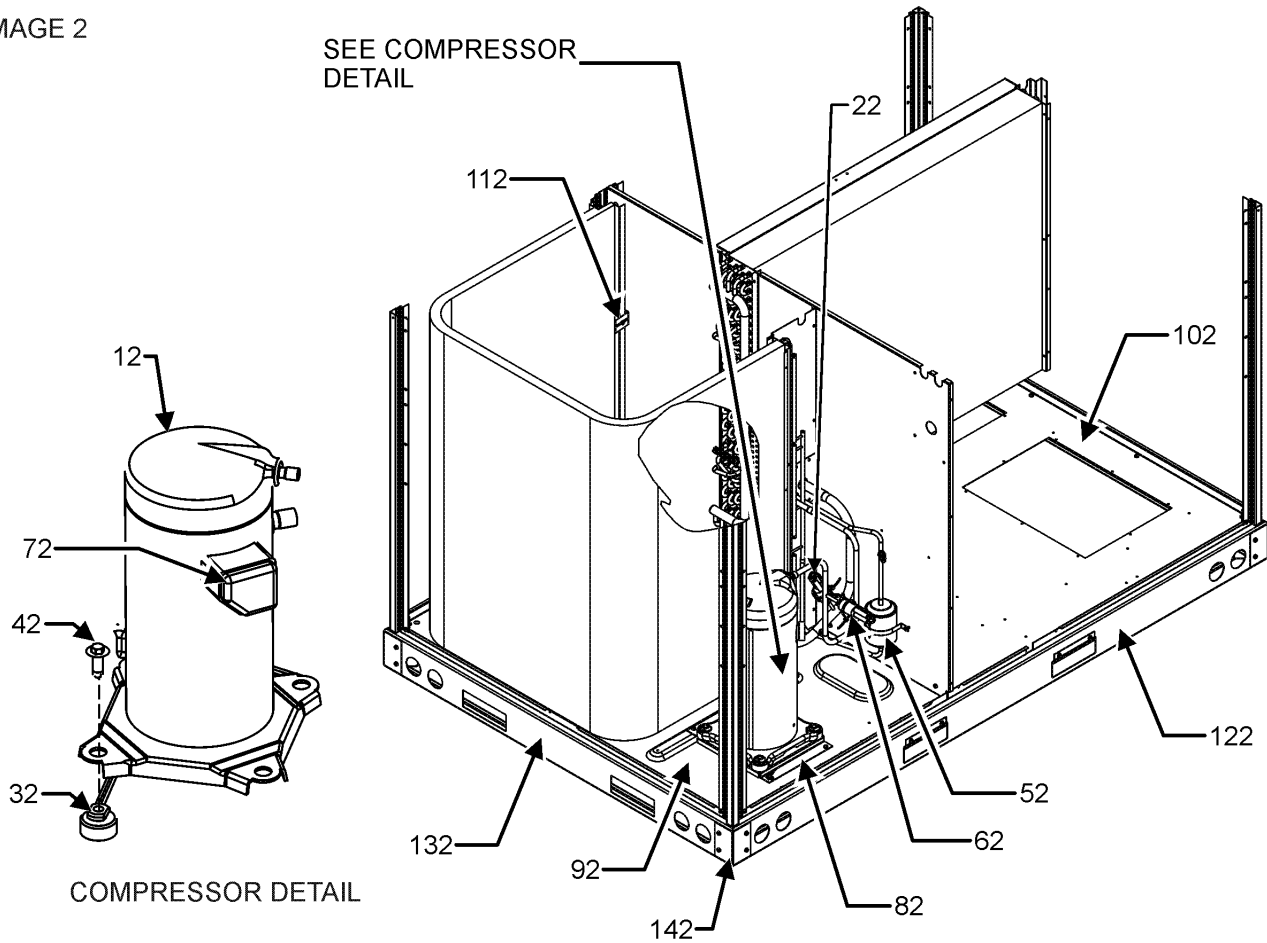


IMAGE 2



Top Panel and Tubing Assembly

Ref. Part No: No:	Description:	Ref. Part No: No:	Description:
Image 1:		Expanded Model Nomenclature	
11	0121L00235NG TOP PANEL	M1	- DCG0720903VAXXAA
21	0131M00430 COND MOTOR 1/3 HP, 1 SP, 6 PL (M1, M2, M6, M9, M10, M11, M12, M13, M14, M15, M17, M18, M19, M21, M22)	M2	- DCG0720903VXXXAA
21	0131M00500 COND MOTOR 1/3 HP, OD, LAK (M4, M8, M30)	M3	- DCG0720904VXXXAA
21	0131M00774 MOTOR, 1/3 HP, OD (M3, M7, M23, M24, M25, M26, M27, M28, M29)	M4	- DCG0720907VXXXAA
21	0131L00064 MOTOR, COND, 1/3 HP, 208/230V (M5, M16, M20)	M5	- DCG0721153VVSCAA
31	0163M00006P ACORN NUT 5/16 HEX BLACK (QTY 4)	M6	- DCG0721153VXXXAA
41	0152G00000 FAN GRILLE (M5, M16, M20)	M7	- DCG0721154VXXXAA
41	0152G00003 FAN GRILLE (M1, M2, M3, M4, M6, M7, M8, M9, M10, M11, M12, M13, M14, M15, M17, M18, M19, M21, M22, M23, M24, M25, M26, M27, M28, M29, M30)	M8	- DCG0721157VXXXAA
51	17788000083F PVC CONDUIT 8.25"	M9	- DCG0721403VHDDAA
61	0150G00004 FAN BLADE (M4, M8, M30)	M10	- DCG0721403VHKPAA
61	B1086765 FAN BLADE TYPE 3 (M1, M2, M3, M5, M6, M7, M9, M10, M11, M12, M13, M14, M15, M16, M17, M18, M19, M20, M21, M22, M23, M24, M25, M26, M27, M28, M29)	M11	- DCG0721403VHXAAA
71	0161L00000 VENTURI RING 22"	M12	- DCG0721403VHXBAA
NS	0163M00004 SCREW #10X3/4", BLACK (QTY 8)	M13	- DCG0721403VRLTAA
NS	0163M00005P WASHER, BLACK (.50 OD .218ID) (QTY 4)	M14	- DCG0721403VVSXAA
		M15	- DCG0721403VVXDAA
		M16	- DCG0721403VWXFAA
		M17	- DCG0721403VWXOAA
		M18	- DCG0721403VWXXAA
		M19	- DCG0721403VXSXAA
		M20	- DCG0721403VXXQAA
		M21	- DCG0721403VXXXAA
		M22	- DCG0721403V1DDAA
		M23	- DCG0721404VAXXAA
		M24	- DCG0721404VAXZAA
		M25	- DCG0721404VBXXAA
		M26	- DCG0721404VHDXAA
		M27	- DCG0721404VWXJAA
		M28	- DCG0721404VXXTAA
		M29	- DCG0721404VXXXAA
		M30	- DCG0721407VXXXAA
Image 2:			
12	ZPS60K5ETFD130 COMP, 60900, 460/60/3 2 STAGE (M3, M7, M23, M24, M25, M26, M27, M28, M29)		
12	ZPS60K5ETF5130 COMP, 61000, 200/230/60/3 2 ST (M1, M2, M5, M6, M9, M10, M11, M12, M13, M14, M15, M16, M17, M18, M19, M20, M21, M22)		
12	ZPS60K5ETFE130 COMP, 61000, 575/60/3 2 STAGE (M4, M8, M30)		
22	0130M00087 CUT-OUT SWITCH, LOW PRESSURE		
32	B1339533 COMPRESSOR GROMMET (QTY 4)		
42	M0221641 TF SHOULDER SCREW (QTY 4)		
52	20485201 BI-FLOW FILTER DRIER		
62	0130M00074 CUT-OUT SWITCH, HIGH PRESSURE		
72	0159L00065 Harness, comp scroll		
82	0121L00310 COMPRESSOR MOUNTING PLATE		
92	0121L01990 BASE PAN-OUTDOOR		
102	0121L02619 BASE PAN-INDOOR		
112	0121L00936 BRACKET-HAIRPIN END		
122	0121L00244RF SIDE RAIL (QTY 2)		
132	0121L00245 END RAIL (QTY 2)		
142	0121G00301 RAIL CORNER BRACKET (QTY 4)		
NS	B1373315 ACCESS FITTING (QTY 2)		
NS	0159G00010 CABLE, COMP SOL		
NS	0141L00003X FORK BOARD (QTY 2)		
NS	0121L00055 FORK BOARD BRACKET (QTY 4)		

Cabinet Assembly

IMAGE 1

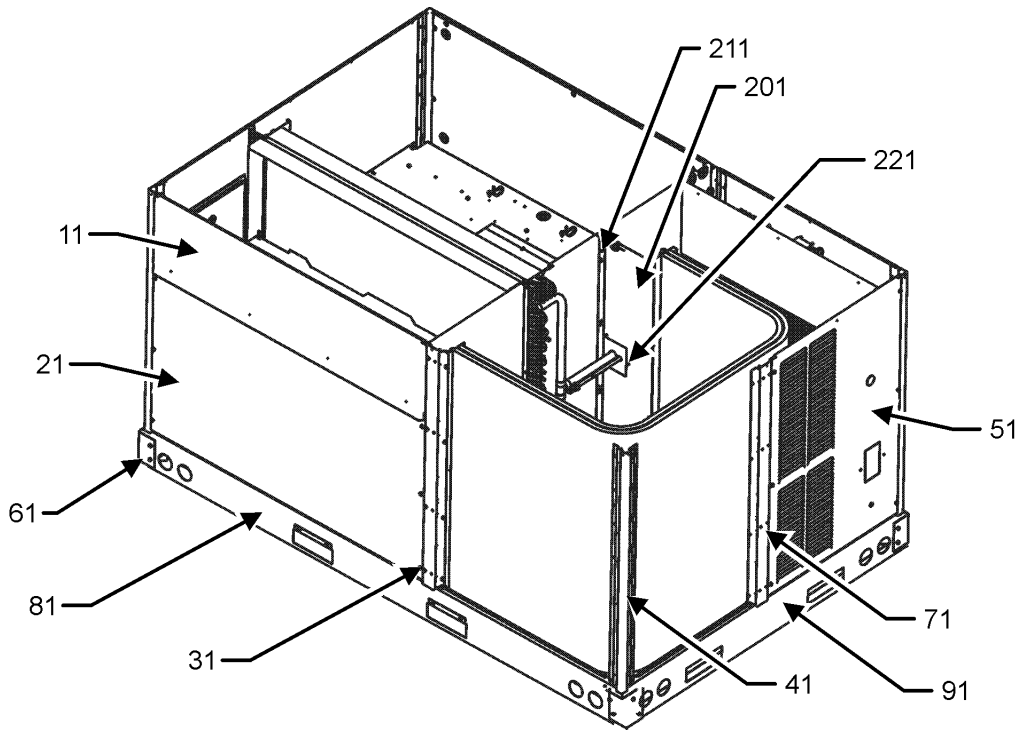
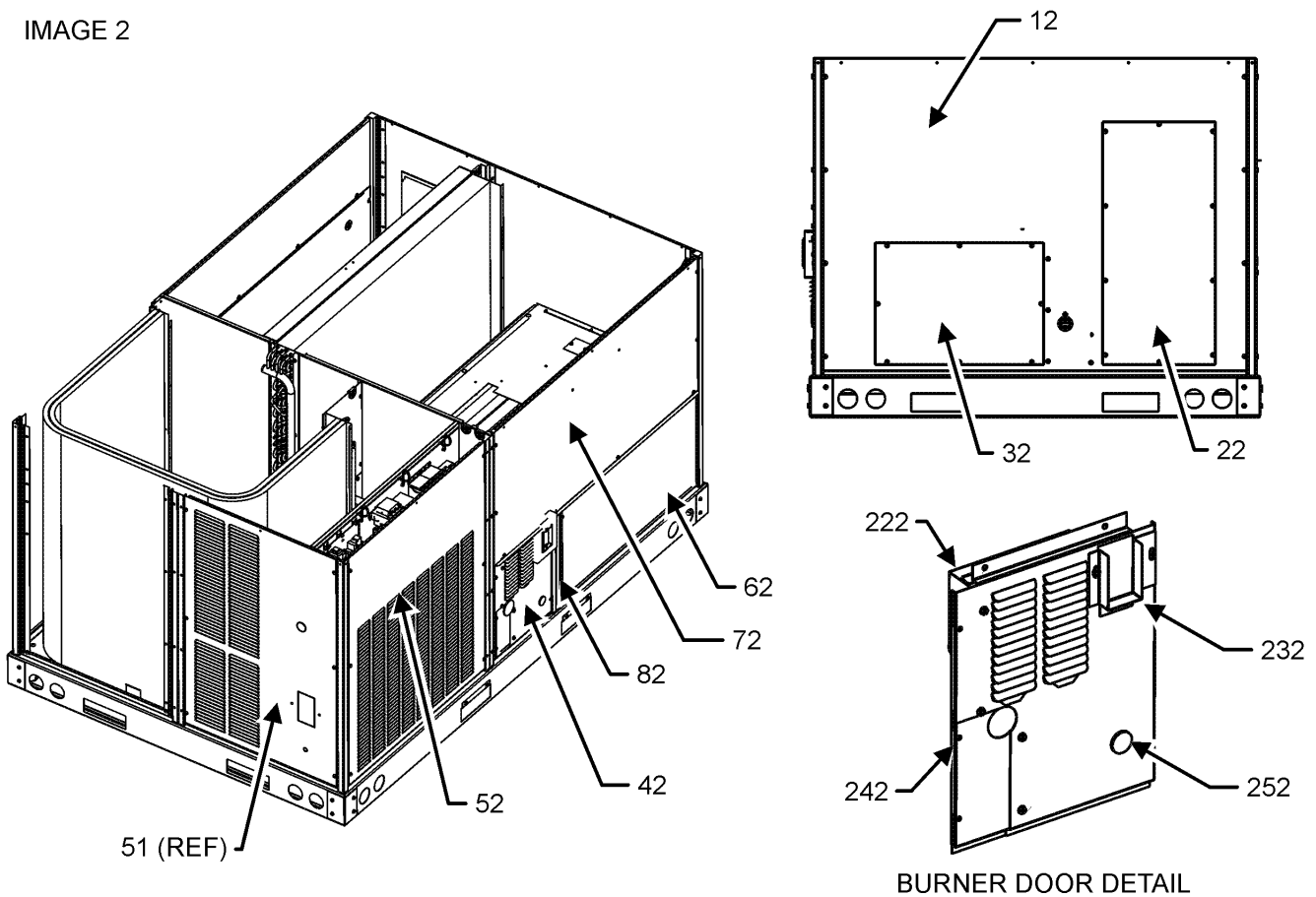


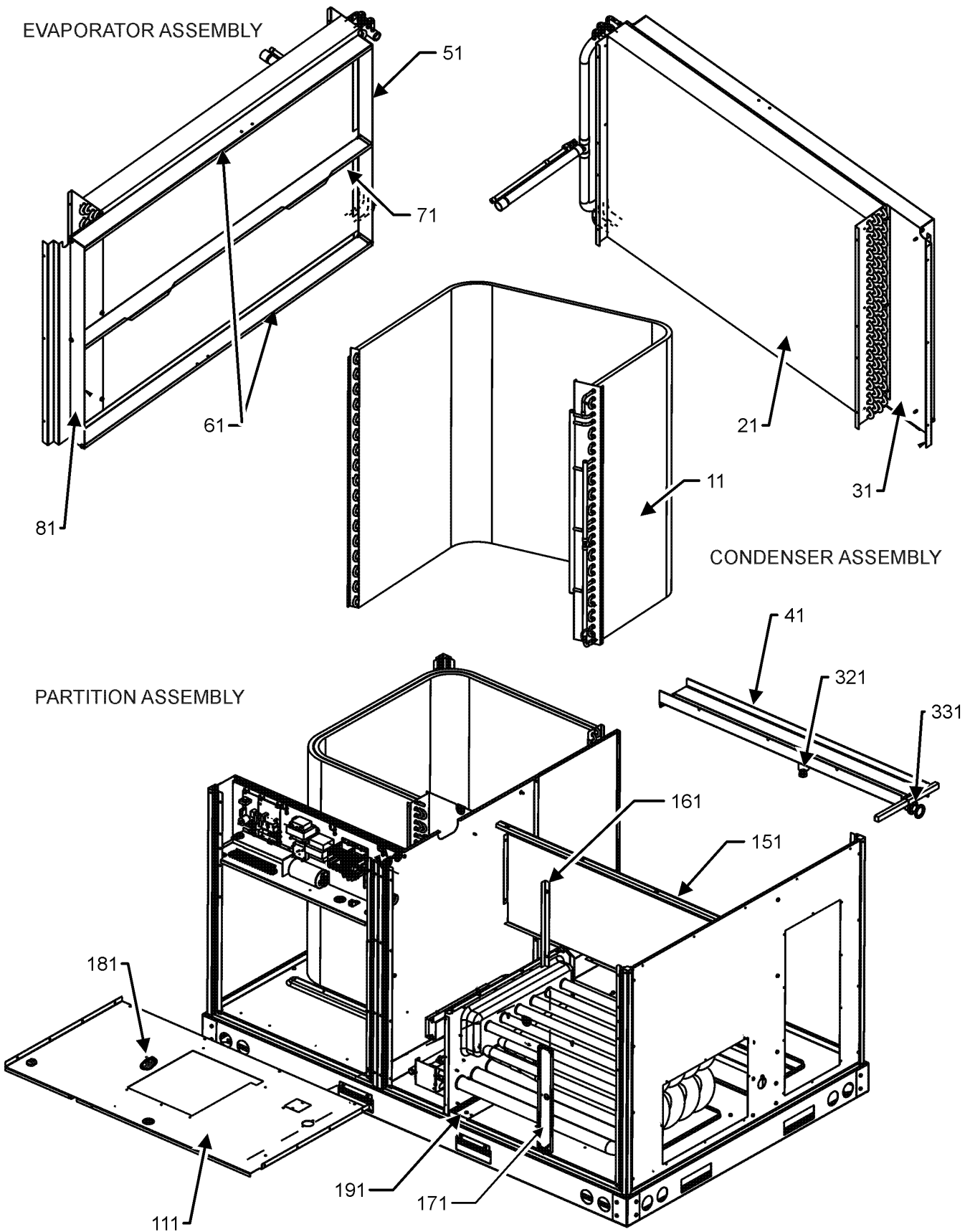
IMAGE 2



Cabinet Assembly

Ref. Part No: No:	Description:	Ref. Part No: No:	Description:
Image 1:		Expanded Model Nomenclature	
11	0270L00363NG FILTER DOOR	M1 - DCG0720903VAXXAA	
21	0121L00976NG ECONOMIZER DOOR (M2, M3, M4, M5, M6, M7, M8, M9, M10, M11, M12, M13, M14, M15, M16, M17, M18, M19, M20, M21, M22, M25, M26, M27, M28, M29, M30)	M2 - DCG0720903VXXXAA	
31	0121L00343RFNG POST-SIDE RF PAINTED (QTY 2)	M3 - DCG0720904VXXXAA	
41	0121L00344RFNG CORNER POST (QTY 4)	M4 - DCG0720907VXXXAA	
41	0121L01383RFNG CORNER POST (M9, M10, M13, M22, M26)	M5 - DCG0721153VVSCAA	
51	0121L00354NG LOUVERED COMPRESSOR PANEL (M1, M2, M3, M4, M5, M6, M7, M8, M14, M15, M19, M20, M21, M23, M24, M25, M28, M29, M30)	M6 - DCG0721153VXXXAA	
51	0121L00840NG LOUVERED COMPRESSOR PANEL (M9, M10, M11, M12, M13, M16, M17, M18, M22, M26, M27)	M7 - DCG0721154VXXXAA	
61	0121G00301 BRACKET-RAIL CORNERS (QTY 4)	M8 - DCG0721157VXXXAA	
71	0121L01169RFNG SIDE POST (M1, M2, M3, M4, M5, M6, M7, M8, M11, M12, M14, M15, M16, M17, M18, M19, M20, M21, M23, M24, M25, M27, M28, M29, M30)	M9 - DCG0721403VHDDAA	
71	0121L01382RFNG SIDE POST (M9, M10, M13, M22, M26)	M10 - DCG0721403VHKPAA	
81	0121L00244RF SIDE RAIL (QTY 2)	M11 - DCG0721403VHXAAA	
91	0121L00245 END RAIL (QTY 2)	M12 - DCG0721403VHXBAA	
201	0121L00889 BLOCKOFF-CONDENSER	M13 - DCG0721403VRLTAA	
211	0121L00349 COND MOUNTING ANGLE	M14 - DCG0721403VVSXAA	
221	0121L00939 CONDENSER BLOCKOFF PLATE	M15 - DCG0721403VVXDAA	
NS	0121L01309 ECONOMIZER COVER (M1, M23, M24)	M16 - DCG0721403VWXFAA	
NS	0164L00009 GASKET-RUBBER, CPOST (QTY 3)	M17 - DCG0721403VWXOAA	
NS	0164L00011 GASKET-RUBBER, SIDE POST (QTY 3)	M18 - DCG0721403VWXXAA	
		M19 - DCG0721403VXSXAA	
		M20 - DCG0721403VXXQAA	
		M21 - DCG0721403VXXXAA	
		M22 - DCG0721403V1DDAA	
		M23 - DCG0721404VAXXAA	
		M24 - DCG0721404VAXZAA	
		M25 - DCG0721404VBXXAA	
		M26 - DCG0721404VHDXAA	
		M27 - DCG0721404VWXJAA	
		M28 - DCG0721404VXXTAA	
		M29 - DCG0721404VXXXAA	
		M30 - DCG0721407VXXXAA	
12	0121L00342NG DUCT PANEL		
22	0121L00023NG RETURN DUCT COVER		
32	0121L00024NG SUPPLY DUCT COVER		
42	0121L01438NG BURNER DOOR		
52	0121L01170NG LOUVERED CONTROL PANEL (M1, M2, M3, M4, M5, M6, M7, M8, M11, M12, M14, M15, M16, M17, M18, M19, M20, M21, M23, M24, M25, M27, M28, M29, M30)		
52	0121L01348NG LOUVERED CONTROL PANEL (M9, M10, M13, M22, M26)		
62	0121L01108NG HEAT EXCHANGER DOOR		
72	0121L01172NG BLOWER DOOR		
82	0121L01110RFNG BURNER POST		
222	0121L01439 RAIN SHIELD DOOR		
232	0121L01440NG FLUE COLLAR		
242	0121L01441NG BURNER DOOR PANEL		
252	B1392139 VIEW PORT BUSHING-BLOWER DOOR		
NS	B1910012 GAS LINE GROMMET (M9, M10, M13, M22, M26)		

Condenser, Evaporator, Partition Assembly

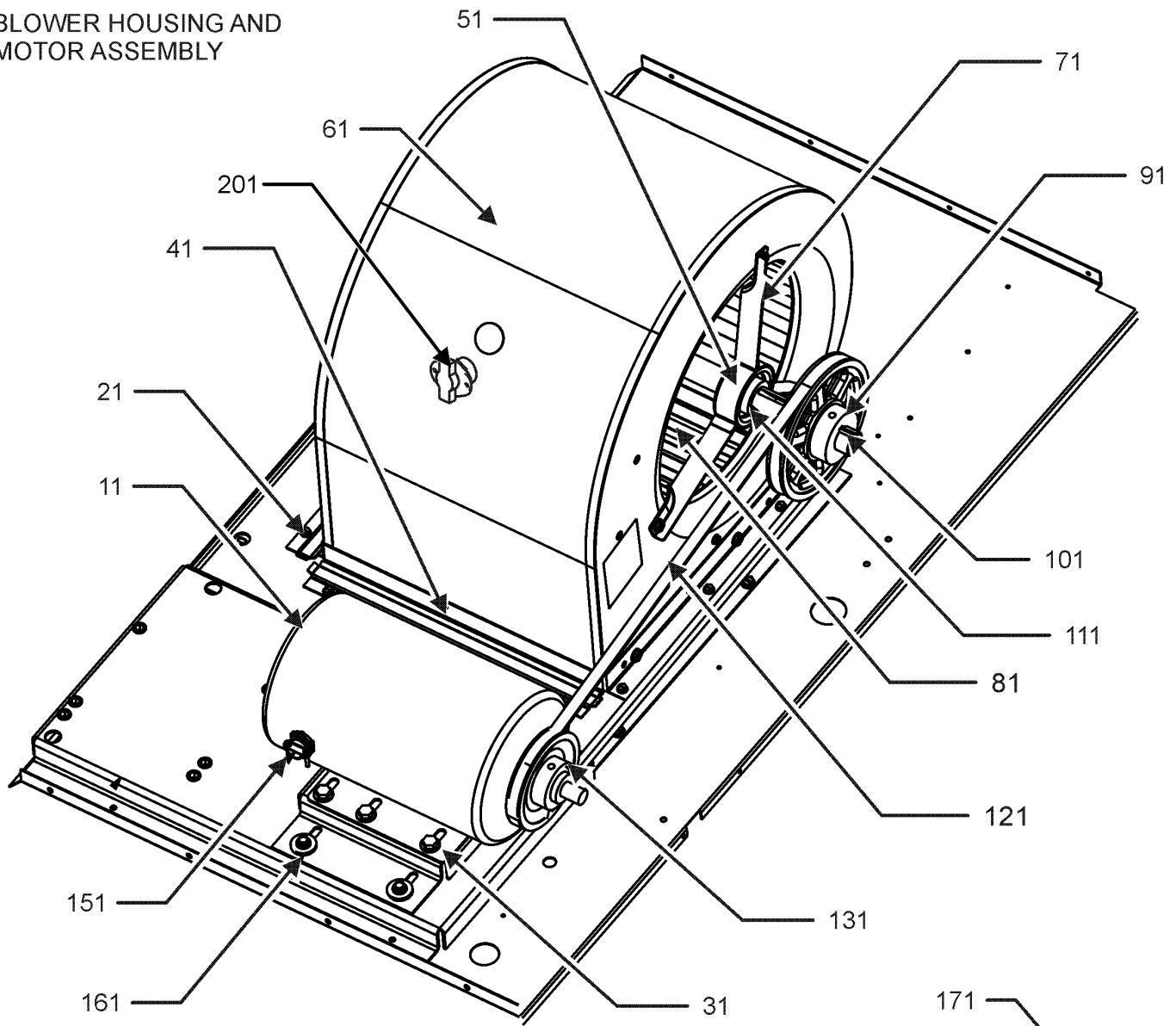


Condenser, Evaporator, Partition Assembly

Ref. Part No:	Description:	Ref. Part No:	Description:
Image 1:		Expanded Model Nomenclature	
11	0201L00145 TUBING ASSY, COND COIL	M1	- DCG0720903VAXXAA
21	0202L00146 TUBING ASSY, EVAP COIL	M2	- DCG0720903VXXXAA
31	0121L00345 BLOCKOFF-EVAPORATOR (M1, M2, M3, M4, M5, M6, M7, M8, M9, M10, M11, M12, M14, M15, M16, M18, M19, M21, M23, M25, M26, M29, M30)	M3	- DCG0720904VXXXAA
31	0121L00398 BLOCKOFF-EVAPORATOR (M9, M13, M15, M17, M20, M22, M24, M27, M28)	M4	- DCG0720907VXXXAA
41	0161L00005 DRAIN PAN	M5	- DCG0721153VVSCAA
51	0121L00357 FILTER ANGLE-VERTICAL (RETURN SIDE)	M6	- DCG0721153VXXXAA
61	0121L00932 FILTER ANGLE-HORIZONTAL (QTY 2)	M7	- DCG0721154VXXXAA
71	0121L01255 ANGLE-FILTER CENTER	M8	- DCG0721157VXXXAA
81	0121L00358 FILTER ANGLE-VERTICAL (HAIRPIN SIDE)	M9	- DCG0721403VHDDAA
111	0121L01575 BLOWER DECK	M10	- DCG0721403VHKPAA
151	0121L02123 DECK SIDE CHANNEL	M11	- DCG0721403VHXAAA
161	0121L00293 BACK ANGLE-HEAT EXCHANGER (QTY 2)	M12	- DCG0721403VHXBAA
171	0121L00300 SUPPORT POST-DECK	M13	- DCG0721403VRLTAA
181	0130M00063 PRIMARY LIMIT - GOLD 140° (M5, M6, M7, M8, M9, M10, M11, M12, M13, M14, M15, M16, M17, M18, M19, M20, M21, M22, M23, M24, M25, M26, M27, M28, M29, M30)	M14	- DCG0721403VVSXAA
181	20162906 PRIMARY LIMIT - WHITE (M1, M2, M3, M4)	M15	- DCG0721403VVXDAA
191	0121L00266 HEAT PANEL CHANNEL (QTY 2)	M16	- DCG0721403VWXFAA
321	0163L00071 DRAIN PLUG	M17	- DCG0721403VWXOAA
331	0154L00009 DRAIN PAN GASKET	M18	- DCG0721403VWXXAA
NS	0160L00174 AIR FILTER 16 X 20 X 2 (QTY 4)	M19	- DCG0721403VXSXAA
NS	0121L01377 BLOWER DECK SUPPORT (M9, M10, M13, M22, M26)	M20	- DCG0721403VXXQAA
NS	0121L00938 BRACKET-COIL GUIDE	M21	- DCG0721403VXXXAA
NS	0121L00939 CONDENSER BLOCKOFF PLATE	M22	- DCG0721403V1DDAA
NS	0121L00238 DRAIN PAN SUPPORT	M23	- DCG0721404VAXXAA
NS	A4568804 GROMMET-D (QTY 4)	M24	- DCG0721404VAXZAA
NS	0121L00321 SMOKE DETECTOR COVER	M25	- DCG0721404VBXXAA
NS	0251L00000 EXPANSION VALVE ASSY	M26	- DCG0721404VHDXAA
		M27	- DCG0721404VWXJAA
		M28	- DCG0721404VXXTAA
		M29	- DCG0721404VXXXAA
		M30	- DCG0721407VXXXAA

Belt Drive Blower Assembly

BLOWER HOUSING AND
MOTOR ASSEMBLY



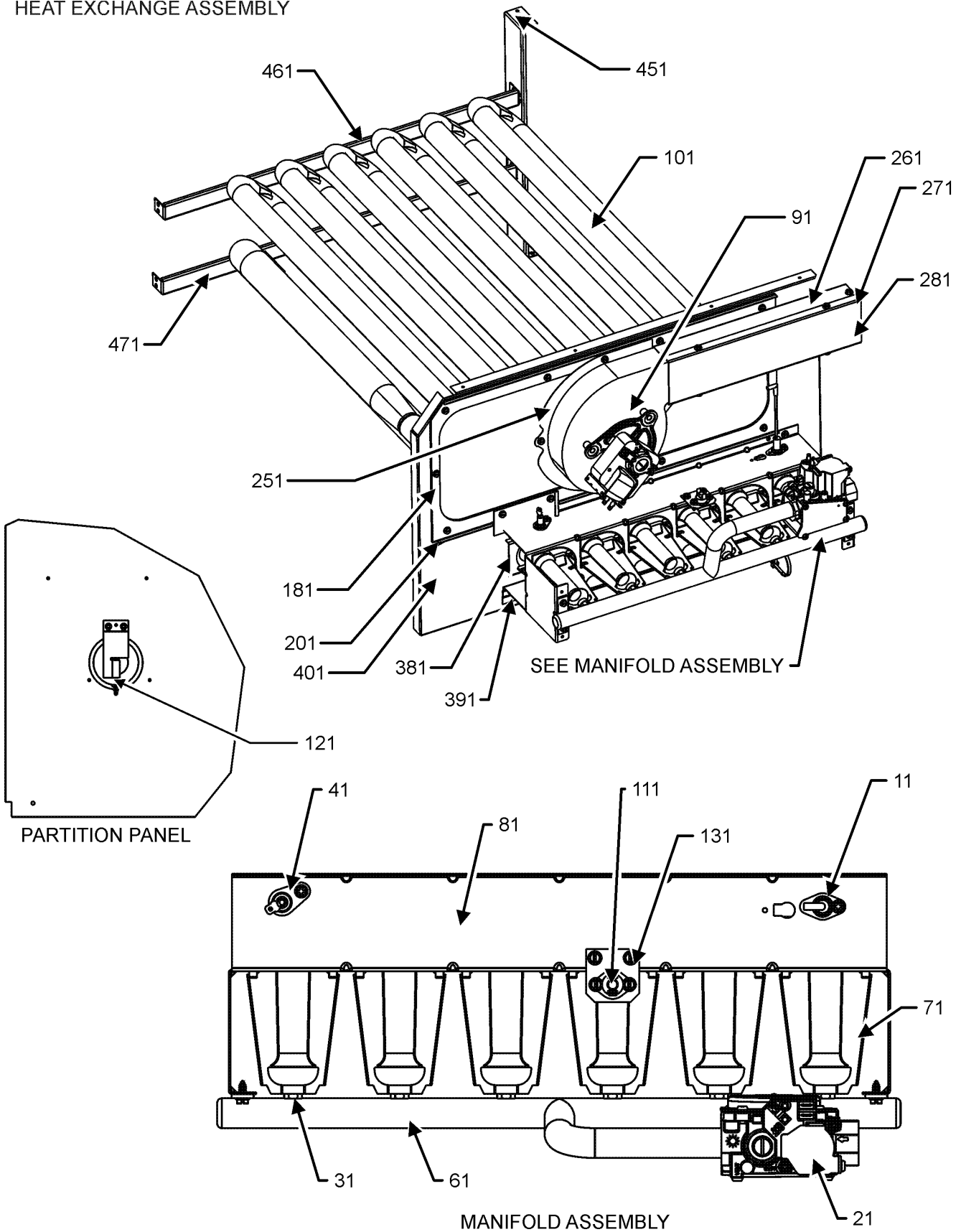
MOUNTING PLATE ASSEMBLY

Belt Drive Blower Assembly

Ref. Part No:	Description:	Ref. Part No:	Description:
Image 1:		Expanded Model Nomenclature	
11	0131L00041 MOTOR 2 HP BELT DRIVE 208-230V (M1, M2, M5, M6, M9, M10, M11, M12, M13, M14, M15, M16, M17, M18, M19, M20, M21, M22)	M1 - DCG0720903VAXXAA	
11	0131L00043 MOTOR 2HP BELT DRIVE 460V (M3, M7, M23, M24, M25, M26, M27, M28, M29)	M2 - DCG0720903VXXXAA	
11	0131L00042 MOTOR 2HP BELT DRIVE 575V (M4, M8, M30)	M3 - DCG0720904VXXXAA	
21	0121L00297 BLOWER SIDE ANGLE (QTY 3)	M4 - DCG0720907VXXXAA	
31	0121L01619 MOTOR BASE	M5 - DCG0721153VVSCAA	
41	0121L00281 BLOWER MOUNTING ANGLE	M6 - DCG0721153VXXXAA	
51	0163L00005 BELT DRIVE BLOWER SHAFT	M7 - DCG0721154VXXXAA	
61	2539302F BLOWER HOUSING 11 X 10	M8 - DCG0721157VXXXAA	
71	B3201300 MOUNTING BRACKET BEARING (QTY 2)	M9 - DCG0721403VHDDAA	
81	B1368056 BELT DRIVE BLOWER WHEEL	M10 - DCG0721403VHKPAA	
91	0163L00136 SHEAVE, FIXED AK59H	M11 - DCG0721403VHXAAA	
101	B1398604 STEEL KEY (000158812) 2.0"	M12 - DCG0721403VHXBAA	
111	B1399500 BALL BEARING 1.00" (QTY 2)	M13 - DCG0721403VRLTAA	
121	0164L00010 FAN BELT, NOTCHED	M14 - DCG0721403VVSXAA	
131	B2120001 VARIABLE PITCH SHEAVE 1VL44 X 3/8" (M4, M8, M30)	M15 - DCG0721403VVXDAA	
131	B2120014 VARIABLE PITCH SHEAVE 1VL44 X 7/8" (M1, M2, M3, M5, M6, M7, M9, M10, M11, M12, M13, M14, M15, M16, M17, M18, M19, M20, M21, M22, M23, M24, M25, M26, M27, M28, M29)	M16 - DCG0721403VWXFAA	
151	B1393726 ELECT. CONNECTING BUSHING	M17 - DCG0721403VWXOAA	
161	B1393738 BOLT 1/4-20 X 3/4" (QTY 4)	M18 - DCG0721403VWXXAA	
171	0163M00045 BOLT 1/4-20 X 4"	M19 - DCG0721403VXSXAA	
181	3225000F BELT TIGHTENER ANGLE	M20 - DCG0721403VXXQAA	
191	B1393023 NUT / LOCK .25-20	M21 - DCG0721403VXXXAA	
201	0130F00037 PRIMARY LIMIT - GRAY 150°	M22 - DCG0721403V1DDAA	
NS	1864703F BLOWER CUT-OFF	M23 - DCG0721404VAXXAA	
NS	B1398603 STEEL KEY (000158812) 4.5"	M24 - DCG0721404VAXZAA	
		M25 - DCG0721404VBXXAA	
		M26 - DCG0721404VHDXAA	
		M27 - DCG0721404VWXJAA	
		M28 - DCG0721404VXXTAA	
		M29 - DCG0721404VXXXAA	
		M30 - DCG0721407VXXXAA	

Heat Exchange Assembly

HEAT EXCHANGE ASSEMBLY



Heat Exchange Assembly

Ref. Part
No: No:

Description:

Ref. Part
No: No:

Description:

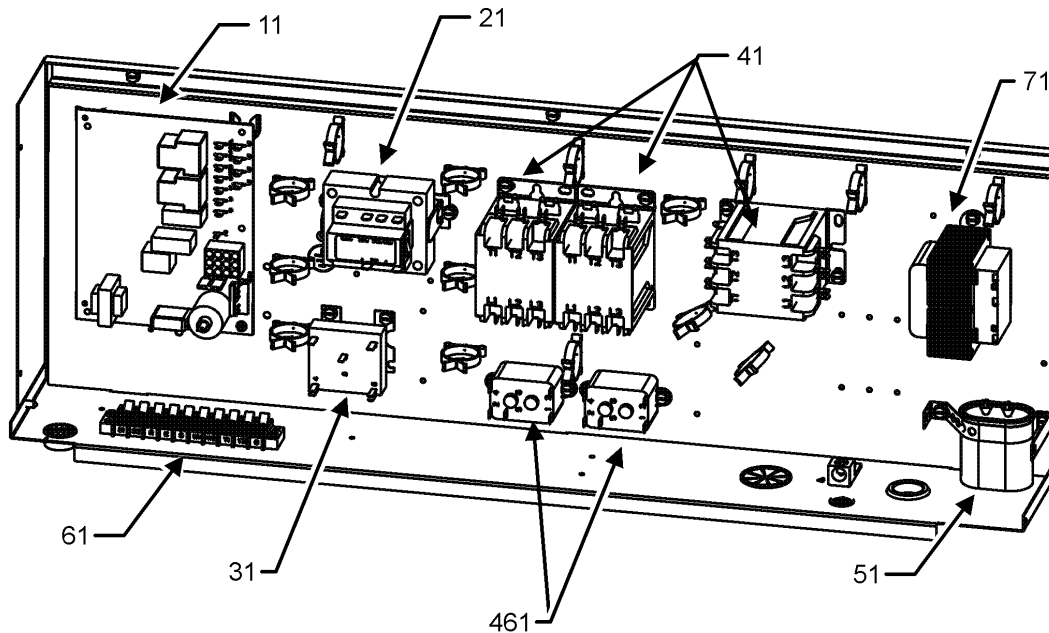
Image 1:

11	20261709	IGNITOR
21	0151F00000P	GAS VALVE - WHITE-RODGERS 2-STAGE
31	0163F00018	ORIFICE (QTY 4)
41	0130F00010	FLAME SENSOR
61	0163L00026	MANIFOLD - 4 BRNR (M1, M2, M3, M4)
61	0163L00029	MANIFOLD - 5 BRNR (M5, M6, M7, M8)
61	0163L00025	MANIFOLD - 6 BRNR (M9, M10, M11, M12, M13, M14, M15, M16, M17, M18, M19, M20, M21, M22, M23, M24, M25, M26, M27, M28, M29, M30)
71	10735102	BECKETT BURNER (QTY 4)
81	20190412	BURNER BRACKET 4B (M1, M2, M3, M4)
81	20190413	BURNER BRACKET 5B (M5, M6, M7, M8)
81	0121F00145	BURNER BRACKET 6B (M9, M10, M11, M12, M13, M14, M15, M16, M17, M18, M19, M20, M21, M22, M23, M24, M25, M26, M27, M28, M29, M30)
91	0131M00121	ID COMBUSTION BLOWER
101	0270L00092	PART/TUBE ASSY 4B (M1, M2, M3, M4)
101	0270L00110	PART/TUBE ASSY 5B (M6, M7, M8)
101	0270L00111	PART/TUBE ASSY 5B (M5)
101	0270L00072	PART/TUBE ASSY 6B (M9, M11, M12, M15, M16, M17, M18, M20, M21, M22, M23, M24, M25, M26, M27, M28, M29, M30)
101	0270L00104	PART/TUBE ASSY 6B (M10, M13, M14, M19)
111	10123532	MANUAL RESET LIMIT 350°F
121	11112501	PRESSURE SWITCH
131	0121L00053	FLAME ROLLOUT BRACKET
181	0154L00018	ID BLOWER PLATE GASKET 4 BRNR (M1, M2, M3, M4)
181	0154L00017	ID BLOWER PLATE GASKET 6 BRNR (M5, M6, M7, M8, M9, M10, M11, M12, M13, M14, M15, M16, M17, M18, M19, M20, M21, M22, M23, M24, M25, M26, M27, M28, M29, M30)
201	0121L00241	ID BLOWER PLATE (M9, M10, M11, M12, M13, M14, M15, M16, M17, M18, M19, M20, M21, M22, M23, M24, M25, M26, M27, M28, M29, M30)
201	0121L00284	ID BLOWER PLATE 4 BRNR (M1, M2, M3, M4)
201	0121L00318	ID BLOWER PLATE 6 BRNR (M5, M6, M7, M8)
251	0154L00020	ID BLOWER GASKET
261	0121L00277	FLUE CHANNEL
271	0121L00278	FLUE SIDE COVER
281	0163L00072	SCREEEN-FLUE
381	11072203	ORIFICE SHIELD (M1, M2, M3, M4)
381	11072204	ORIFICE SHIELD (M5, M6, M7, M8)
381	11072205	ORIFICE SHIELD (M9, M10, M11, M12, M13, M14, M15, M16, M17, M18, M19, M20, M21, M22, M23, M24, M25, M26, M27, M28, M29, M30)
391	0121L00267	BURNER SLIDE BRACKET
401	0121L00268	RETAINER-BURNER ASSY (M5, M6, M7, M8, M9, M10, M11, M12, M13, M14, M15, M16, M17, M18, M19, M20, M21, M22, M23, M24, M25, M26, M27, M28, M29, M30)
451	0121L02618	SUPPORT BRACKET
461	0121L01576	SUPPORT BRACKET
471	0121L02617	SUPPORT BRACKET
NS	A3468601	PRESSURE SWITCH HOSE

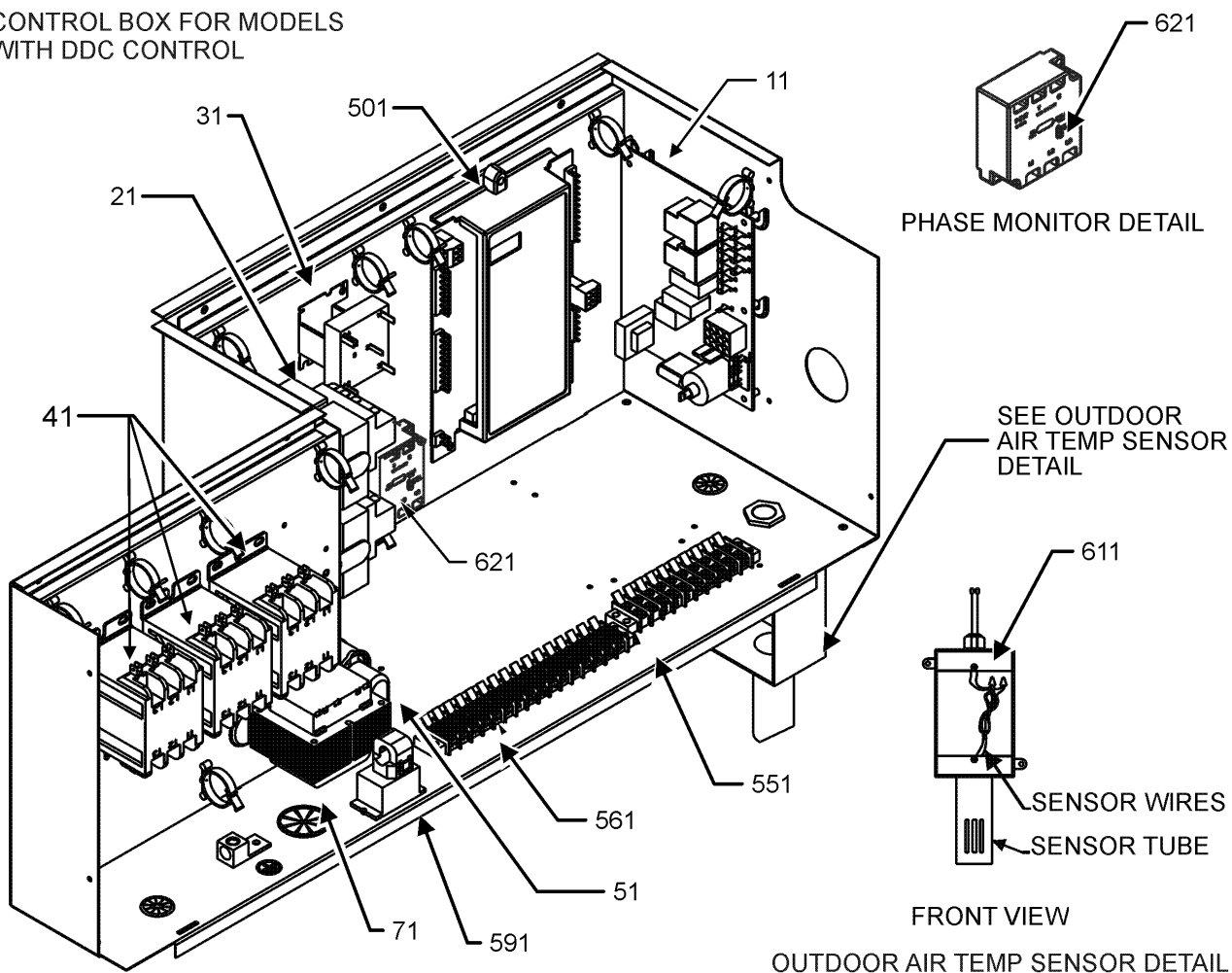
Expanded Model Nomenclature

M1 - DCG0720903VAXXAA
M2 - DCG0720903VXXXAA
M3 - DCG0720904VXXXAA
M4 - DCG0720907VXXXAA
M5 - DCG0721153VVSCAA
M6 - DCG0721153VXXXAA
M7 - DCG0721154VXXXAA
M8 - DCG0721157VXXXAA
M9 - DCG0721403VHDDAA
M10 - DCG0721403VHKPAA
M11 - DCG0721403VHXAAA
M12 - DCG0721403VHXBAA
M13 - DCG0721403VRLTAA
M14 - DCG0721403VVSXAA
M15 - DCG0721403VVXDAA
M16 - DCG0721403VWXFAA
M17 - DCG0721403VWXOAA
M18 - DCG0721403VWXXAA
M19 - DCG0721403VXSXAA
M20 - DCG0721403VXXQAA
M21 - DCG0721403VXXXAA
M22 - DCG0721403V1DDAA
M23 - DCG0721404VAXXAA
M24 - DCG0721404VAXZAA
M25 - DCG0721404VBXXAA
M26 - DCG0721404VHDXAA
M27 - DCG0721404VWXJAA
M28 - DCG0721404VXXTAA
M29 - DCG0721404VXXXAA
M30 - DCG0721407VXXXAA

Control Panel Assembly



CONTROL BOX FOR MODELS WITH DDC CONTROL



Control Panel Assembly

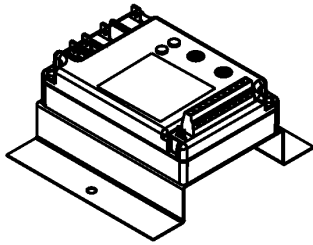
Ref. Part No: No:	Description:	Ref. Part No: No:	Description:
Image 1:		Image 1:	
11	PCBAG123	NS 0259L00427	WIRE, HARNESS ASSY. (M13)
21	0130M00144	NS 0259L00054	WIRING HARNESS (M13, M25)
		NS 0259L00070	WIRING HARNESS (M5, M16, M20)
21	0130M00138	Expanded Model Nomenclature	
21	0130M00145	M1 - DCG0720903VAXXAA	
		M2 - DCG0720903VXXXAA	
21	0130M00148	M3 - DCG0720904VXXXAA	
31	0130M00025	M4 - DCG0720907VXXXAA	
41	CONT3P025024V	M5 - DCG0721153VVSCAA	
		M6 - DCG0721153VXXXAA	
41	CONT3P030024V	M7 - DCG0721154VXXXAA	
		M8 - DCG0721157VXXXAA	
51	CAP100000370LA	M9 - DCG0721403VHDDAA	
		M10 - DCG0721403VHKPAA	
51	CAP050000440LA	M11 - DCG0721403VHXAAA	
61	0130M00240	M12 - DCG0721403VHXBAA	
71	0130M00144	M13 - DCG0721403VRLTAA	
		M14 - DCG0721403VVSXAA	
71	0130M00146	M15 - DCG0721403VVXDAA	
		M16 - DCG0721403VWXFAA	
71	0130M00145	M17 - DCG0721403VWXOAA	
71	0130M00147	M18 - DCG0721403VWXXAA	
		M19 - DCG0721403VXSXAA	
461	10135604	M20 - DCG0721403VXXQAA	
501	PCBCG100	M21 - DCG0721403VXXXAA	
551	0130M00274	M22 - DCG0721403V1DDAA	
561	0130M00275	M23 - DCG0721404VAXXAA	
591	0259L00368	M24 - DCG0721404VAXZAA	
611	0130L00108	M25 - DCG0721404VBXXAA	
		M26 - DCG0721404VHDXAA	
621	0130L00105	M27 - DCG0721404VWXJAA	
NS	B821700	M28 - DCG0721404VXXTAA	
NS	20520901	M29 - DCG0721404VXXXAA	
NS	0130L00112	M30 - DCG0721407VXXXAA	
NS	0259L00235		
NS	0259L00320		
NS	0259L00321		
NS	0259L00328		
NS	0259L00329		
NS	0259L00330		
NS	0259L00331		
NS	0259L00337		
NS	0259L00332		
NS	0259L00335		
NS	0259L00092		
NS	0130L00107		
NS	0259L00427		
NS	0259L00428		
NS	0259L00090		
NS	0259L00428		

Accessory Parts List

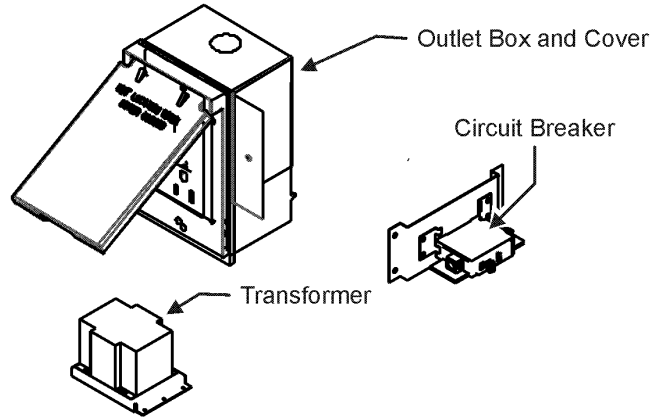
ACCESSORY PARTS LIST

NOTE: NOT ALL OPTIONS AVAILABLE FOR ALL PRODUCTS

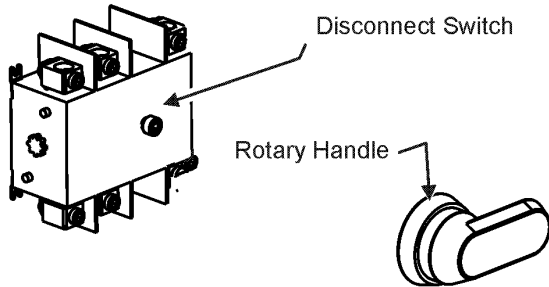
1 LOW AMBIENT KITS



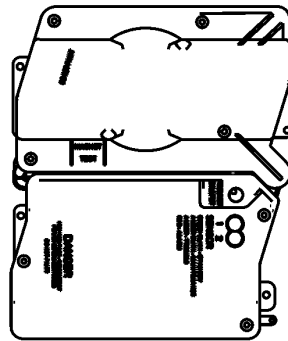
2 GFCI CONVENIENCE OUTLET



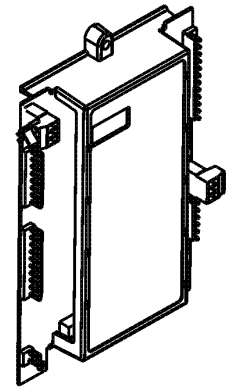
3 DISCONNECT MODULE (NON-FUSED)



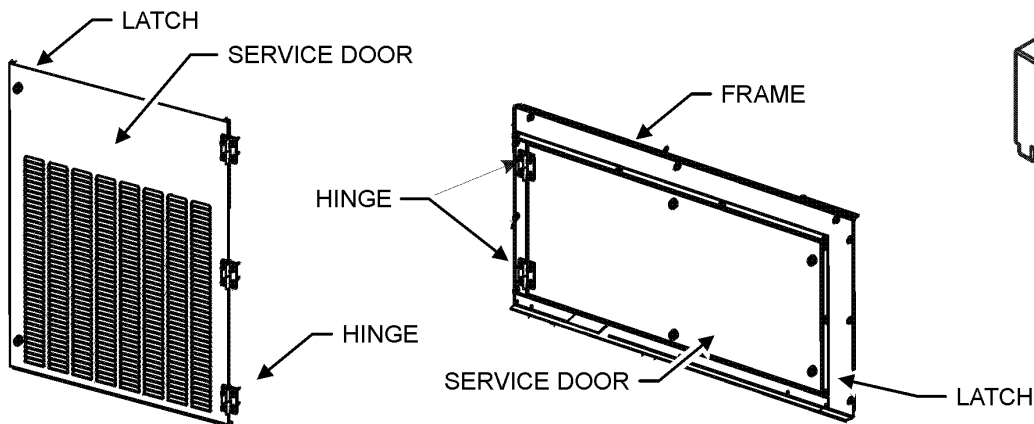
4 SMOKE DETECTORS



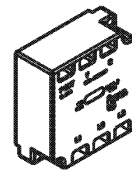
5 DDC CONTROL



6 HINGED DOOR ASSEMBLIES



7 PHASE MONITOR



Accessory Parts List

Ref. Part No: No:	Description:	Ref. Part No: No:	Description:
Image 1:		Expanded Model Nomenclature	
NS 1036609C	3-6 TON DFLOW ECONOMIZER (M1, M23, M24)	M1 - DCG0720903VAXXAA	
NS DDNECNJ3672C	3-6 TON DFLOW ECONOMIZER (M5, M14, M15, M16, M17, M18, M27)	M2 - DCG0720903VXXXAA	
NS 10366D09C	3-6 TON DFLOW ECONOMIZER, DDC (M13)	M3 - DCG0720904VXXXAA	
NS 0121L01381NG	BLOWER DOOR FRAME (M9, M10, M13, M22, M26)	M4 - DCG0720907VXXXAA	
NS 0121L01379NG	BLOWER SERVICE DOOR, BACK (M9, M10, M13, M22, M26)	M5 - DCG0721153VVSCAA	
NS 0121L01378NG	BLOWER SERVICE DOOR, FRONT (M9, M10, M13, M22, M26)	M6 - DCG0721153VXXXAA	
NS 0121L01934	BRACKET SMOKE DETECTOR (M9, M10, M15, M20, M22)	M7 - DCG0721154VXXXAA	
NS 0121L00316	BRACKET-CONV OUTLET MOUNT (M10, M11, M12, M13, M16, M17, M20, M27, M28)	M8 - DCG0721157VXXXAA	
NS 0121L00835	BRACKET-DISCONNECT SWITCH (M9, M10, M11, M12, M13, M16, M17, M18, M22, M26, M27)	M9 - DCG0721403VHDDAA	
NS 0130M00065	CIRCUIT BREAKER, CONVENIENCE OUTLET (M10, M12, M13, M17, M20, M28)	M10 - DCG0721403VHKPAA	
NS 0121L00837NG	DISCONNECT COVER (M9, M10, M11, M12, M13, M16, M17, M18, M22, M26, M27)	M11 - DCG0721403VHXAAA	
NS 0130L00012	GANG BOX-GFCI OUTLET (M10, M11, M12, M13, M16, M17, M20, M27, M28)	M12 - DCG0721403VHXBAA	
NS 0130L00039	HANDLE, ROTARY (M9, M10, M11, M12, M13, M16, M17, M18, M22, M26, M27)	M13 - DCG0721403VRLTAA	
NS 0163M00307	HINGE, LEFT HAND (M9, M10, M13, M22, M26)	M14 - DCG0721403VVSXAA	
NS 0163M00308	HINGE, RIGHT HAND (M9, M10, M13, M22, M26)	M15 - DCG0721403VVXDAA	
NS 0163M00322	LATCH (M9, M10, M13, M22, M26)	M16 - DCG0721403VWXFAA	
NS 0121L01348NG	LOUVERED CP SERVICE DOOR (M9, M10, M13, M22, M26)	M17 - DCG0721403VWXOAA	
NS 0130M00058	LOW AMBIENT KIT (M5, M16, M20, M28)	M18 - DCG0721403VWXXAA	
NS LAKT01	LOW AMBIENT KIT (M28)	M19 - DCG0721403VXSXAA	
NS 0161G00012	POWER OUTLET BOX (M10, M11, M12, M13, M16, M17, M20, M27, M28)	M20 - DCG0721403VXXQAA	
NS 0130L00103	RECEPTACLE-GFCI OUTLET (M10, M11, M12, M13, M16, M17, M20, M27, M28)	M21 - DCG0721403VXXXAA	
NS RS400	REMOTE SENSOR (M22)	M22 - DCG0721403V1DDAA	
NS SP400	SENSOR PACK (M22)	M23 - DCG0721404VAXXAA	
NS 0130L00042	SHAFT, CUT (M9, M10, M11, M12, M13, M16, M17, M18, M22, M26, M27)	M24 - DCG0721404VAXZAA	
NS 0130L00049	SHAFT, DISCONNECT (M9, M10, M11, M12, M13, M16, M17, M18, M22, M26, M27)	M25 - DCG0721404VBXXAA	
NS D4120	SMOKE DETECTOR, PHOTO 4WIRE (M9, M10, M15, M20, M22)	M26 - DCG0721404VHDXAA	
NS D4S	SMOKE DETECTOR, SENSOR ONLY (M13, M17, M24, M27, M28)	M27 - DCG0721404VWXJAA	
NS ECP400-5	SURVEYOR ECP (M22)	M28 - DCG0721404VXXTAA	
NS 0130L00046	SWITCH-DISCONNECT 60A (M9, M10, M11, M12, M13, M16, M17, M18, M22, M26, M27)	M29 - DCG0721404VXXXAA	
NS 0130M00061	TRANSFORMER, CONVENIENCE OUTLET (M10, M12, M13, M17, M20, M28)	M30 - DCG0721407VXXXAA	
NS 0259L00558	WIRE HARNESS (M22)		