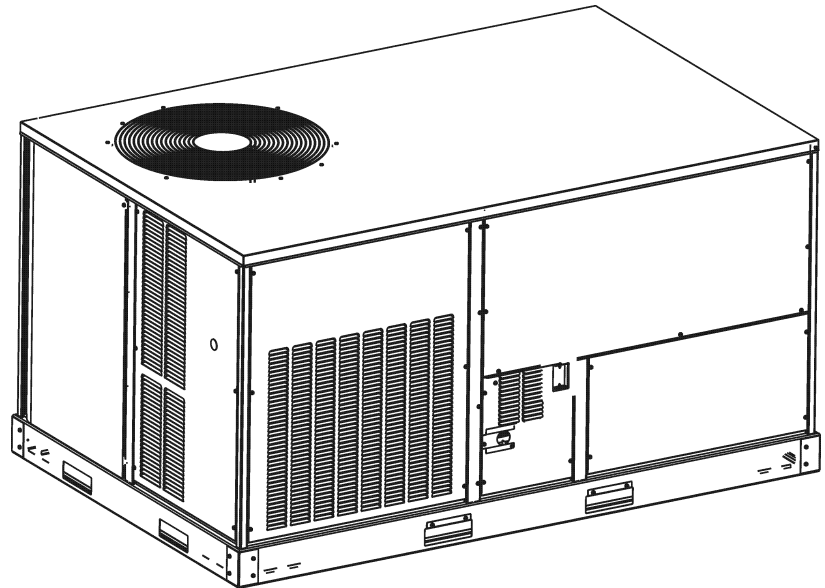


Commercial 5 Ton Package Gas Unit

DCG0600903BBXXAA
DCG0600903BHXQAB
DCG0600903BJXAAB
DCG0600903BJXUAA
DCG0600904BAXXAC
DCG0600904BBXXAA
DCG0600904BHXFAC
DCG0600904BHXBAC
DCG0600904BXSXAC
DCG0601403BAXXAB
DCG0601403BBXXAA
DCG0601403BHXBAB
DCG0601403BHXFAB
DCG0601403BHXXAB
DCG0601403BJSNAB
DCG0601403BJXAAB
DCG0601403BJXUAB
DCG0601403BXXGAB
DCG0601403BXXXAB
DCG0601404BAXXAC
DCG0601404BBXXAA
DCG0601404BHXAAC
DCG0601404BHxDAC
DCG0601404BXSXAC
DCG0601404BXXXAC
DCG0601407BASXAB
DCG0601407BBXXAA
DCG0601407BHXAAB
DCG0601407BXSXAB
DCG0601407BXXXAB



This manual is to be used by qualified technicians only.

This manual replaces RP-D1070E.

Important Information

Index

Functional Parts List	3
Illustration and Parts	4 - 17

Views shown are for parts illustrations only, not servicing procedures

Text Codes:

AR - As Required

NA - Not Available

NS - Not Shown

00000000 - See Note

QTY - Quantity Example (QTY 3) (If Quantity not shown, Quantity = 1)

M - Model Example (M1) (If M Code not shown, then part is used on all Models)

Expanded Model Nomenclature:

Example M1 - Model#1 M2 - Model#2 M3 - Model#3

Daikin Company, L.P. is not responsible for personal injury or property damage resulting from improper service. Review all service information before beginning repairs.

Warranty service must be performed by an authorized technician, using authorized factory parts. If service is required after the warranty expires, Daikin Company, L.P. also recommends contacting an authorized technician and using authorized factory parts.

Daikin Company, L.P. reserves the right to discontinue, or change at any time, specifications or designs without notice or without incurring obligations.

For assistance within the U.S.A. contact:

Consumer Affairs Department

Daikin North America, LLC

7401 Security Way

Houston, Texas 77040

855-770-5678-Telephone

713-863-2382-Facsimile

For assistance outside the U.S.A. contact:

International Division

Daikin North America, LLC

7401 Security Way

Houston, Texas 77040

713-861-2500-Telephone

713-863-2382-Facsimile

Functional Parts

Part

No: Description:

Part No:	Description:	Part No:	Description:																														
0130M00025	24V RELAY	0130M00146	TRANSFORMER 480V TO 230V, 150VA (M5, M6, M7, M8, M9, M20, M21, M22, M23, M24, M25)																														
B1368056	BELT DRIVE BLOWER WHEEL	0130M00145	TRANSFORMER 480V to 24V, 75VA (M5, M6, M7, M8, M9, M20, M21, M22, M23, M24, M25)																														
0131L00003	BELT DRIVE MOTOR 1 HP (M1, M2, M3, M4, M5, M6, M7, M8, M9, M10, M11, M12, M13, M14, M15, M16, M17, M18, M19, M20, M21, M22, M23, M24, M25)	0130M00147	TRANSFORMER 575V TO 230V, 150VA (M26, M27, M28, M29, M30)																														
0131L00004	BELT DRIVE MOTOR 1.5 HP 575V (M26, M27, M28, M29, M30)	0130M00148	TRANSFORMER 575V to 24V, 75VA (M26, M27, M28, M29, M30)																														
CAP030000440LA	CAPACITOR 3/440V (M26, M27, M28, M29, M30)	Expanded Model Nomenclature																															
CAP050000370LA	CAPACITOR 5/370V (M1, M2, M3, M4, M10, M11, M12, M13, M14, M15, M16, M17, M18, M19)	<table border="1"> <tr><td>M1 - DCG0600903BBXXAA</td></tr> <tr><td>M2 - DCG0600903BHXXAB</td></tr> <tr><td>M3 - DCG0600903BJXXAB</td></tr> <tr><td>M4 - DCG0600903BJXUAA</td></tr> <tr><td>M5 - DCG0600904BAXXAC</td></tr> <tr><td>M6 - DCG0600904BBXXAA</td></tr> <tr><td>M7 - DCG0600904BHXXAC</td></tr> <tr><td>M8 - DCG0600904BHXXAC</td></tr> <tr><td>M9 - DCG0600904BXXSAC</td></tr> <tr><td>M10 - DCG0601403BAXXAB</td></tr> <tr><td>M11 - DCG0601403BBXXAA</td></tr> <tr><td>M12 - DCG0601403BHXXAB</td></tr> <tr><td>M13 - DCG0601403BHXXAB</td></tr> <tr><td>M14 - DCG0601403BHXXAB</td></tr> <tr><td>M15 - DCG0601403BJSNAB</td></tr> <tr><td>M16 - DCG0601403BJXXAB</td></tr> <tr><td>M17 - DCG0601403BJXUAB</td></tr> <tr><td>M18 - DCG0601403BXXGAB</td></tr> <tr><td>M19 - DCG0601403BXXAB</td></tr> <tr><td>M20 - DCG0601404BAXXAC</td></tr> <tr><td>M21 - DCG0601404BBXXAA</td></tr> <tr><td>M22 - DCG0601404BHXXAC</td></tr> <tr><td>M23 - DCG0601404BHXXAC</td></tr> <tr><td>M24 - DCG0601404BXXSAC</td></tr> <tr><td>M25 - DCG0601404BXXSAC</td></tr> <tr><td>M26 - DCG0601407BASXAB</td></tr> <tr><td>M27 - DCG0601407BBXXAA</td></tr> <tr><td>M28 - DCG0601407BHXXAB</td></tr> <tr><td>M29 - DCG0601407BXXSAB</td></tr> <tr><td>M30 - DCG0601407BXXAB</td></tr> </table>		M1 - DCG0600903BBXXAA	M2 - DCG0600903BHXXAB	M3 - DCG0600903BJXXAB	M4 - DCG0600903BJXUAA	M5 - DCG0600904BAXXAC	M6 - DCG0600904BBXXAA	M7 - DCG0600904BHXXAC	M8 - DCG0600904BHXXAC	M9 - DCG0600904BXXSAC	M10 - DCG0601403BAXXAB	M11 - DCG0601403BBXXAA	M12 - DCG0601403BHXXAB	M13 - DCG0601403BHXXAB	M14 - DCG0601403BHXXAB	M15 - DCG0601403BJSNAB	M16 - DCG0601403BJXXAB	M17 - DCG0601403BJXUAB	M18 - DCG0601403BXXGAB	M19 - DCG0601403BXXAB	M20 - DCG0601404BAXXAC	M21 - DCG0601404BBXXAA	M22 - DCG0601404BHXXAC	M23 - DCG0601404BHXXAC	M24 - DCG0601404BXXSAC	M25 - DCG0601404BXXSAC	M26 - DCG0601407BASXAB	M27 - DCG0601407BBXXAA	M28 - DCG0601407BHXXAB	M29 - DCG0601407BXXSAB	M30 - DCG0601407BXXAB
M1 - DCG0600903BBXXAA																																	
M2 - DCG0600903BHXXAB																																	
M3 - DCG0600903BJXXAB																																	
M4 - DCG0600903BJXUAA																																	
M5 - DCG0600904BAXXAC																																	
M6 - DCG0600904BBXXAA																																	
M7 - DCG0600904BHXXAC																																	
M8 - DCG0600904BHXXAC																																	
M9 - DCG0600904BXXSAC																																	
M10 - DCG0601403BAXXAB																																	
M11 - DCG0601403BBXXAA																																	
M12 - DCG0601403BHXXAB																																	
M13 - DCG0601403BHXXAB																																	
M14 - DCG0601403BHXXAB																																	
M15 - DCG0601403BJSNAB																																	
M16 - DCG0601403BJXXAB																																	
M17 - DCG0601403BJXUAB																																	
M18 - DCG0601403BXXGAB																																	
M19 - DCG0601403BXXAB																																	
M20 - DCG0601404BAXXAC																																	
M21 - DCG0601404BBXXAA																																	
M22 - DCG0601404BHXXAC																																	
M23 - DCG0601404BHXXAC																																	
M24 - DCG0601404BXXSAC																																	
M25 - DCG0601404BXXSAC																																	
M26 - DCG0601407BASXAB																																	
M27 - DCG0601407BBXXAA																																	
M28 - DCG0601407BHXXAB																																	
M29 - DCG0601407BXXSAB																																	
M30 - DCG0601407BXXAB																																	
CAP075000370LA	CAPACITOR 7.5/370V (M5, M6, M7, M8, M9, M20, M21, M22, M23, M24, M25)																																
ZP51K5ETF5130	COMPRESSOR 51000, 208/230/60/3 (M1, M2, M3, M4, M10, M11, M12, M13, M14, M15, M16, M17, M18, M19)																																
ZP51K5ETFD130	COMPRESSOR 51000, 460/60/3 (M5, M6, M7, M8, M9, M20, M21, M22, M23, M24, M25)																																
ZP51K5ETFE130	COMPRESSOR 51000, 575/60/3 (M26, M27, M28, M29, M30)																																
0131M00429	COND MOTOR 1/4 HP, 1 SP,6 PL (M1, M2, M3, M4, M10, M11, M12, M13, M14, M15, M16, M17, M18, M19)																																
0131M00432	COND MOTOR 380/460/50/60 CYCLE (M5, M6, M7, M8, M9, M20, M21, M22, M23, M24, M25)																																
0131M00431	COND MOTOR 575V (M26, M27, M28, M29, M30)																																
CONT3P025024V	CONTACTOR 25 AMP, 3P, 24V (M5, M6, M7, M8, M9, M20, M21, M22, M23, M24, M25, M26, M27, M28, M29, M30)																																
CONT3P030024V	CONTACTOR 30 AMP, 3P, 24V (M1, M2, M3, M4, M10, M11, M12, M13, M14, M15, M16, M17, M18, M19)																																
0130M00074	CUT-OUT SWITCH, HIGH PRESSURE																																
0130M00087	CUT-OUT SWITCH, LOW PRESSURE																																
PCBCG100	DDC Controller (M1, M6, M11, M21, M27)																																
0130L00112	DUCT TEMP SENSOR (M1, M6, M11, M21, M27)																																
0164L00010	FAN BELT, NOTCHED																																
0150G00004	FAN BLADE																																
0130F00010	FLAME SENSOR (QTY 2)																																
0151F00000P	GAS VALVE - WHITE-RODGERS 2-STAGE (QTY 2)																																
PCBAG123	IGNITION BOARD, DSI INTEGRATED																																
20261709	IGNITOR (QTY 2)																																
10123532	MANUAL RESET LIMIT 350°F (QTY 2)																																
0130L00108	OD AIR TEMP SENSOR (M1, M6, M11, M21, M27)																																
11112501	PRESSURE SWITCH																																
20162903	PRIMARY LIMIT - BLUE (M1, M2, M3, M4, M5, M6, M7, M8, M9)																																
0130F00035	PRIMARY LIMIT - PURPLE 220° (M10, M11, M12, M13, M14, M15, M16, M17, M18, M19, M20, M21, M22, M23, M24, M25, M26, M27, M28, M29, M30)																																
20162905	PRIMARY LIMIT-YELLOW																																
0130M00038	TERMINAL BOARD																																
0130M00275	TERMINAL BOARD (M1, M6, M11, M21, M27)																																
0130M00274	TERMINAL BOARD (M1, M6, M11, M21, M27)																																
0130M00138	TRANSFORMER 208/230, 24V (M1, M2, M3, M4, M10, M11, M12, M13, M14, M15, M16, M17, M18, M19)																																

Top Panel/Tubing Assy

Image 1

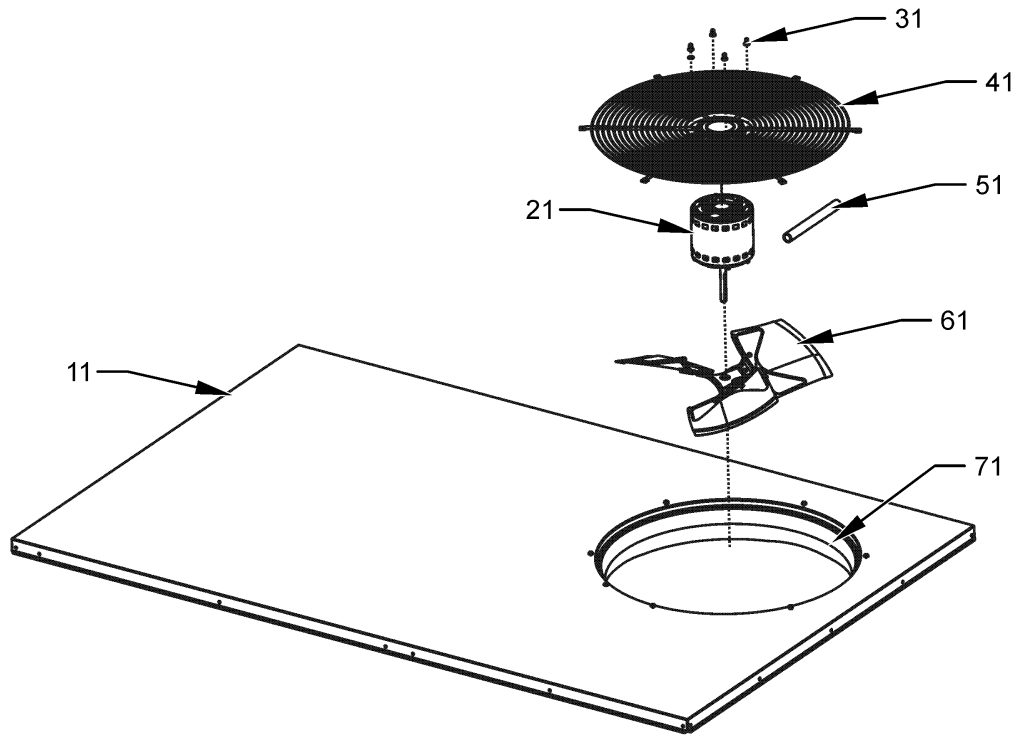
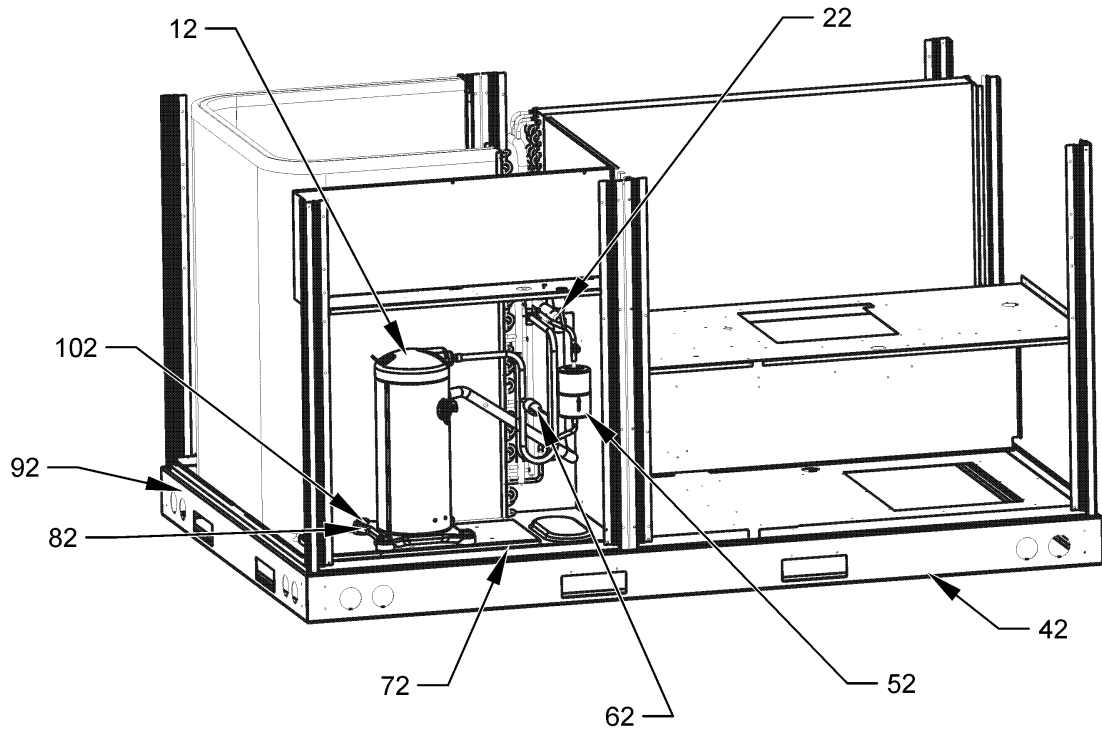


Image 2



Top Panel/Tubing Assy

**Ref. Part
No: No:**

Description:

**Ref. Part
No: No:**

Description:

Image 1:

11	0121L00235NG	TOP PANEL
21	0131M00429	COND MOTOR 1/4 HP, 1 SP,6 PL (M1, M2, M3, M4, M10, M11, M12, M13, M14, M15, M16, M17, M18, M19)
21	0131M00432	COND MOTOR 380/460/50/60 CYCLE (M5, M6, M7, M8, M9, M20, M21, M22, M23, M24, M25)
21	0131M00431	COND MOTOR 575V (M26, M27, M28, M29, M30)
31	0163M00006P	ACORN NUT 5/16 HEX BLACK (QTY 4)
41	0152G00003	FAN GRILLE
51	17788000083F	PVC CONDUIT 8.25"
61	0150G00004	FAN BLADE
71	0161L00000	VENTURI RING 22"
NS	0159L00028	COMPRESSOR SCROLL HARNESS

Image 2:

12	ZP51K5ETF5130	COMPRESSOR 51000, 208/230/60/3 (M1, M2, M3, M4, M10, M11, M12, M13, M14, M15, M16, M17, M18, M19)
12	ZP51K5ETFD130	COMPRESSOR 51000, 460/60/3 (M5, M6, M7, M8, M9, M20, M21, M22, M23, M24, M25)
12	ZP51K5ETFE130	COMPRESSOR 51000, 575/60/3 (M26, M27, M28, M29, M30)
22	0130M00087	CUT-OUT SWITCH, LOW PRESSURE
42	0121L00244RF	SIDE RAIL (QTY 2)
52	0162R00009	FILTER DRIER
62	0130M00074	CUT-OUT SWITCH, HIGH PRESSURE
72	0121L00310	COMPRESSOR MOUNTING PLATE
82	B1339533	COMPRESSOR GROMMET (QTY 4)
92	0121L00245	END RAIL (QTY 2)
102	M0221641	TF SHOULDER SCREW (QTY 4)

Expanded Model Nomenclature

M1 - DCG0600903BBXXAA
M2 - DCG0600903BHXXAB
M3 - DCG0600903BJXAAB
M4 - DCG0600903BJXUAA
M5 - DCG0600904BAXXAC
M6 - DCG0600904BBXXAA
M7 - DCG0600904BHXXAB
M8 - DCG0600904BHXBAC
M9 - DCG0600904BXSXAC
M10 - DCG0601403BAXXAB
M11 - DCG0601403BBXXAA
M12 - DCG0601403BHXXAB
M13 - DCG0601403BHXXAB
M14 - DCG0601403BHXXAB
M15 - DCG0601403BJSNAB
M16 - DCG0601403BJXAAB
M17 - DCG0601403BJXUAB
M18 - DCG0601403BXXGAB
M19 - DCG0601403BXXXAB
M20 - DCG0601404BAXXAC
M21 - DCG0601404BBXXAA
M22 - DCG0601404BHXXAB
M23 - DCG0601404BHXXAB
M24 - DCG0601404BXSXAC
M25 - DCG0601404BXXXAC
M26 - DCG0601407BASXAB
M27 - DCG0601407BBXXAA
M28 - DCG0601407BHXXAB
M29 - DCG0601407BXSXAC
M30 - DCG0601407BXXXAB

Cabinet Assy

Image 1

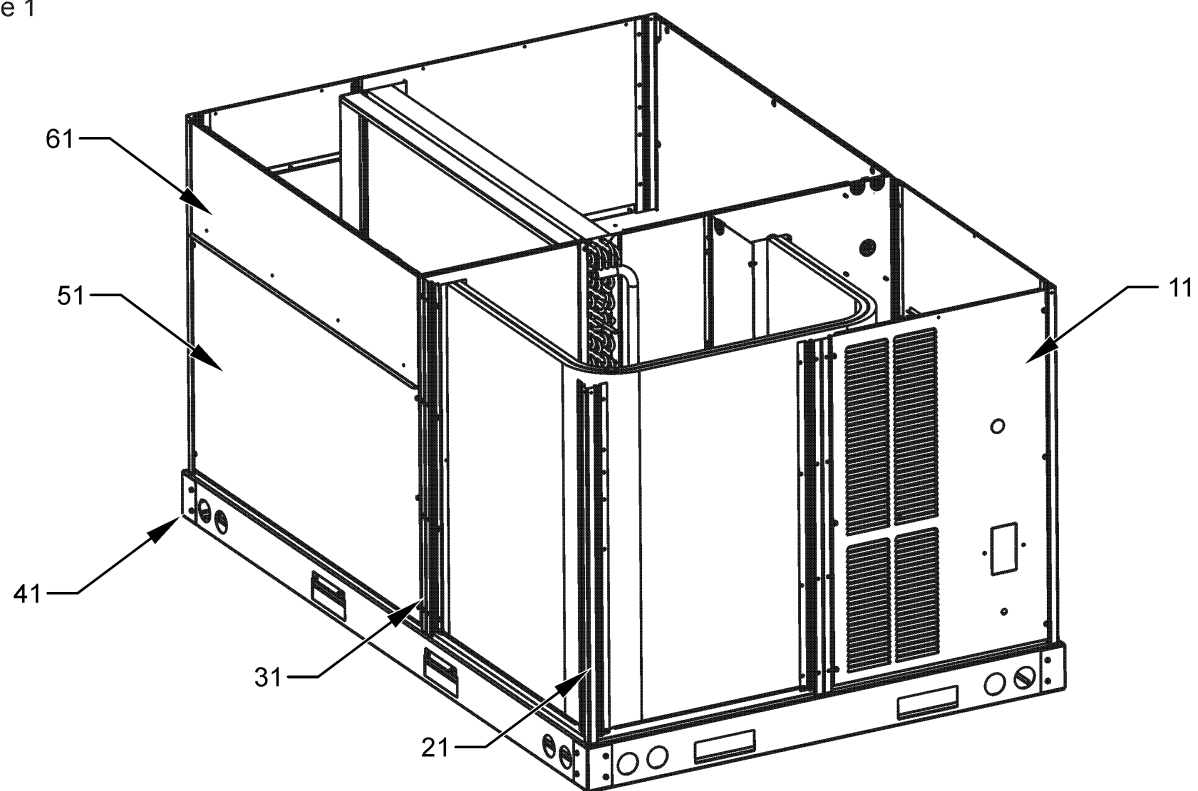
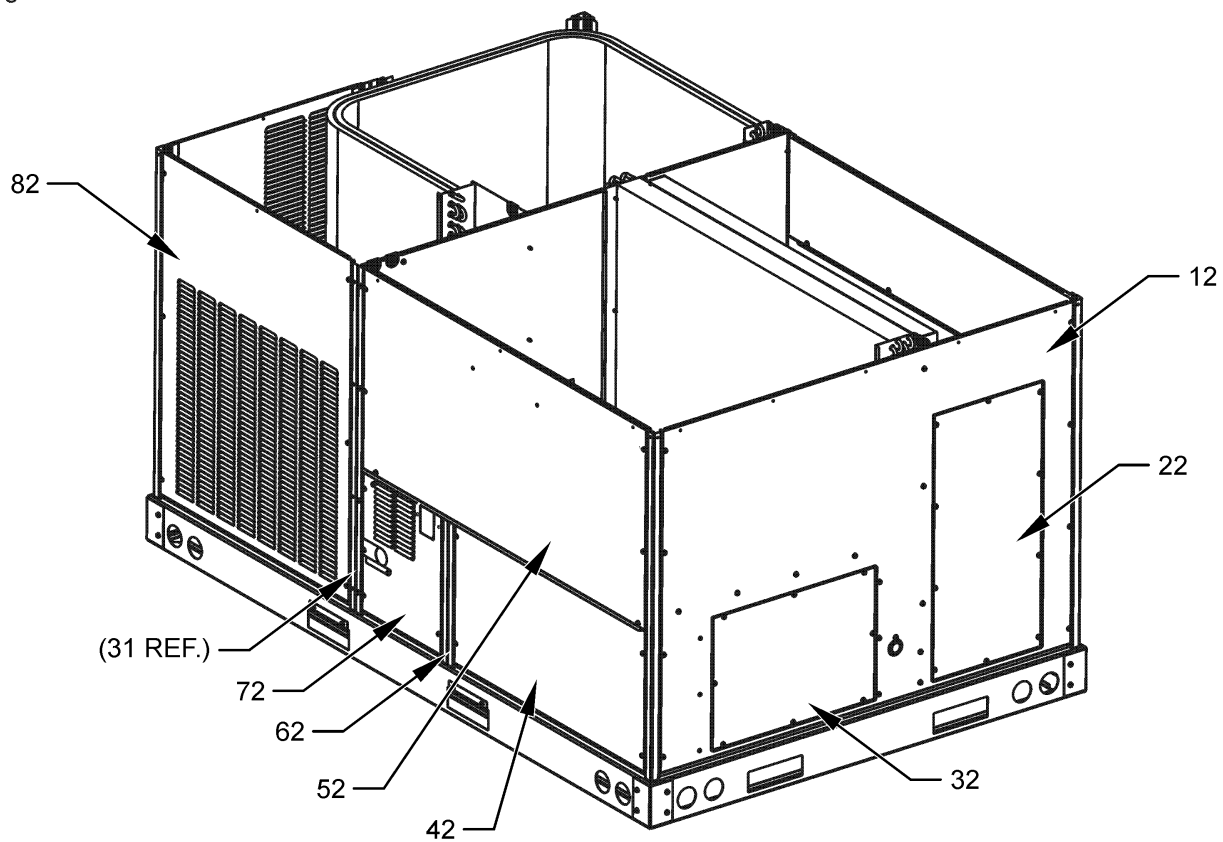


Image 2



Cabinet Assy

**Ref. Part
No: No:**

Description:

**Ref. Part
No: No:**

Description:

Image 1:

11	0121L00263NG	LOUVERED COMPRESSOR PANEL (M1, M5, M6, M9, M10, M11, M18, M19, M20, M21, M24, M25, M26, M27, M29, M30)
11	0121L00836NG	LOUVERED COMPRESSOR PANEL (M2, M3, M4, M7, M8, M12, M13, M14, M15, M16, M17, M22, M23, M28)
21	0121L01198RFNG	CORNER POST (QTY 4)
31	0121L00233RFNG	POST-SIDE SUPPORT (QTY 2)
31	0121L01159RFNG	POST-SIDE SUPPORT (M1, M2, M3, M5, M6, M7, M8, M9, M10, M11, M12, M13, M14, M15, M16, M17, M18, M19, M20, M21, M22, M23, M24, M25, M26, M27, M28, M29, M30)
41	0121G00301	RAIL CORNER BRACKET (QTY 4)
51	0121L00976NG	ECONOMIZER DOOR (M1, M2, M6, M7, M8, M9, M11, M12, M13, M14, M18, M19, M21, M22, M23, M24, M25, M27, M28, M29, M30)
61	0270L00362NG	FILTER DOOR
NS	0121L01309	ECONOMIZER COVER (M3, M4, M5, M10, M15, M16, M17, M20, M26)
NS	0164L00009	GASKET-RUBBER, CPOST (QTY 3)
NS	0164L00011	GASKET-RUBBER, SIDE POST (QTY 3)

Image 2:

12	0121L00236NG	DUCT PANEL
22	0121L00023NG	RETURN DUCT COVER
32	0121L00024NG	SUPPLY DUCT COVER
42	0121L00257NG	HEAT EXCHANGER DOOR (M4)
42	0121L01108NG	HEAT EXCHANGER DOOR (M1, M2, M3, M5, M6, M7, M8, M9, M10, M11, M12, M13, M14, M15, M16, M17, M18, M19, M20, M21, M22, M23, M24, M25, M26, M27, M28, M29, M30)
52	0121L00259NG	BLOWER DOOR (M4)
52	0121L01157NG	BLOWER DOOR (M1, M2, M3, M5, M6, M7, M8, M9, M10, M11, M12, M13, M14, M15, M16, M17, M18, M19, M20, M21, M22, M23, M24, M25, M26, M27, M28, M29, M30)
62	0121L01110RFNG	BURNER POST (M1, M2, M3, M5, M6, M7, M8, M9, M10, M11, M12, M13, M14, M15, M16, M17, M18, M19, M20, M21, M22, M23, M24, M25, M26, M27, M28, M29, M30)
62	0121L00255RFNG	POST-BURNER DOOR (M4)
72	0121L00706NG	BURNER DOOR (M4)
72	0121L01438NG	BURNER DOOR, PNT 3-6 TON (M1, M2, M3, M5, M6, M7, M8, M9, M10, M11, M12, M13, M14, M15, M16, M17, M18, M19, M20, M21, M22, M23, M24, M25, M26, M27, M28, M29, M30)
82	0121L00262NG	LOUVERED CONTROL PANEL (M4)
82	0121L01121NG	LOUVERED CONTROL PANEL (M1, M2, M3, M5, M6, M7, M8, M9, M10, M11, M12, M13, M14, M15, M16, M17, M18, M19, M20, M21, M22, M23, M24, M25, M26, M27, M28, M29, M30)
NS	0121L00295NG	FLUE COLLAR (M4)
NS	0121L01440NG	FLUE COLLAR [3-6Ton] (M1, M2, M3, M5, M6, M7, M8, M9, M10, M11, M12, M13, M14, M15, M16, M17, M18, M19, M20, M21, M22, M23, M24, M25, M26, M27, M28, M29, M30)
NS	0121L00689	RAIN SHIELD-DOOR (M4)
NS	0121L01439	RAIN SHIELD-DOOR (M1, M2, M3, M5, M6, M7, M8, M9, M10, M11, M12, M13, M14, M15, M16, M17, M18, M19, M20, M21, M22, M23, M24, M25, M26, M27, M28, M29, M30)

Expanded Model Nomenclature

M1 - DCG0600903BBXXAA
M2 - DCG0600903BHXXAB
M3 - DCG0600903BJXAAB
M4 - DCG0600903BJXUAA
M5 - DCG0600904BAXXAC
M6 - DCG0600904BBXXAA
M7 - DCG0600904BHXXAB
M8 - DCG0600904BHXBAC
M9 - DCG0600904BXSXAC
M10 - DCG0601403BAXXAB
M11 - DCG0601403BBXXAA
M12 - DCG0601403BHXXAB
M13 - DCG0601403BHXXAB
M14 - DCG0601403BHXXAB
M15 - DCG0601403BJSNAB
M16 - DCG0601403BJXAAB
M17 - DCG0601403BJXUAB
M18 - DCG0601403BXXGAB
M19 - DCG0601403BXXXAB
M20 - DCG0601404BAXXAC
M21 - DCG0601404BBXXAA
M22 - DCG0601404BHXXAC
M23 - DCG0601404BHXDAC
M24 - DCG0601404BXSXAC
M25 - DCG0601404BXXXAC
M26 - DCG0601407BASXAB
M27 - DCG0601407BBXXAA
M28 - DCG0601407BHXXAB
M29 - DCG0601407BXSXAB
M30 - DCG0601407BXXXAB

Partition Assy

Image 1

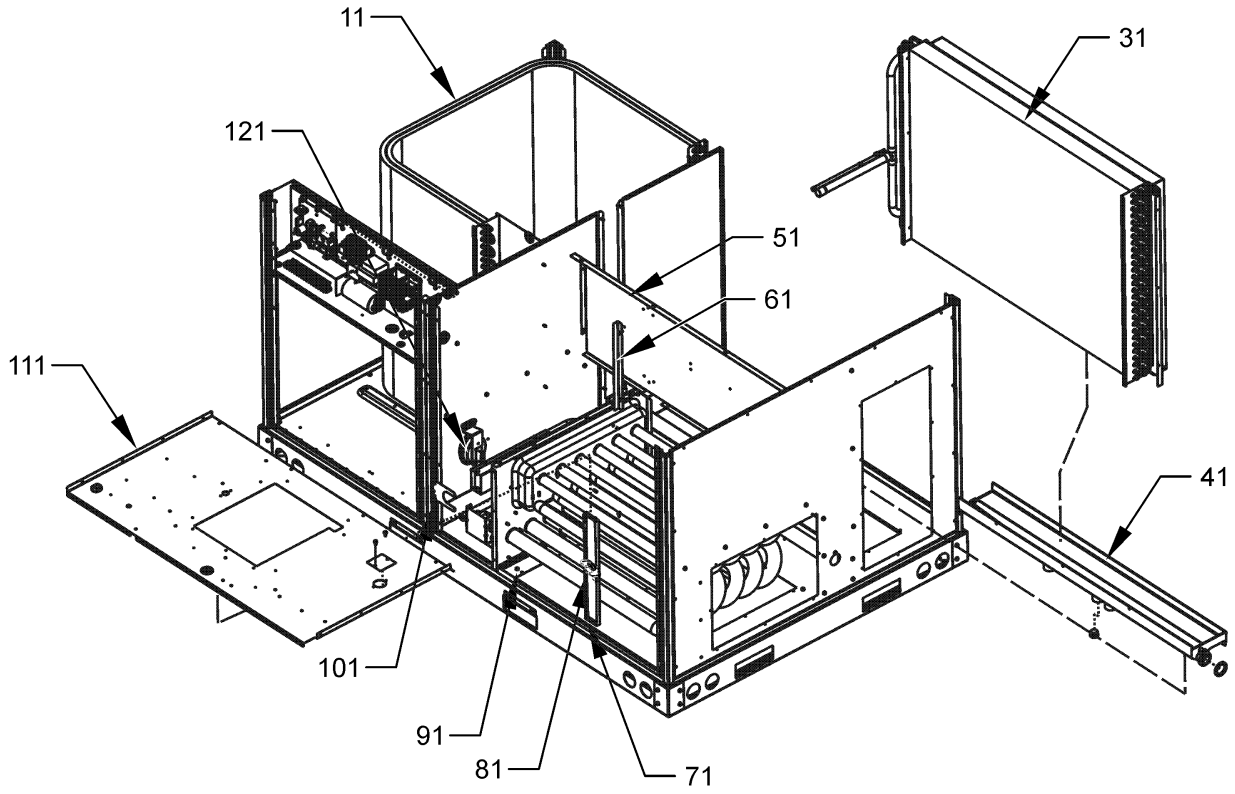
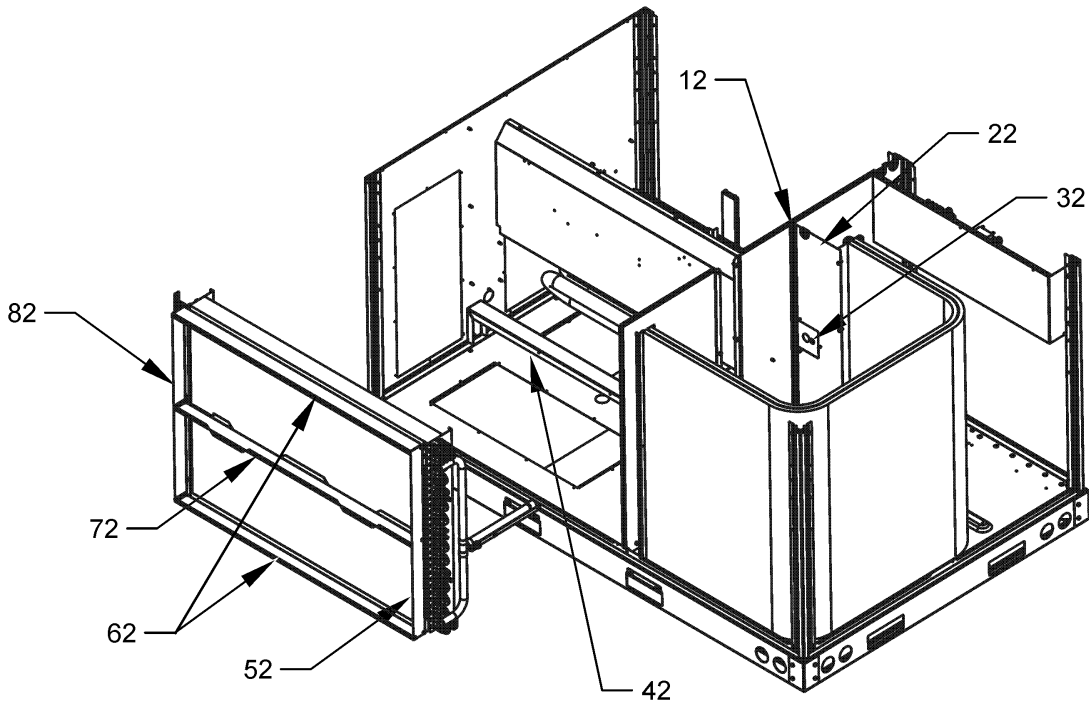


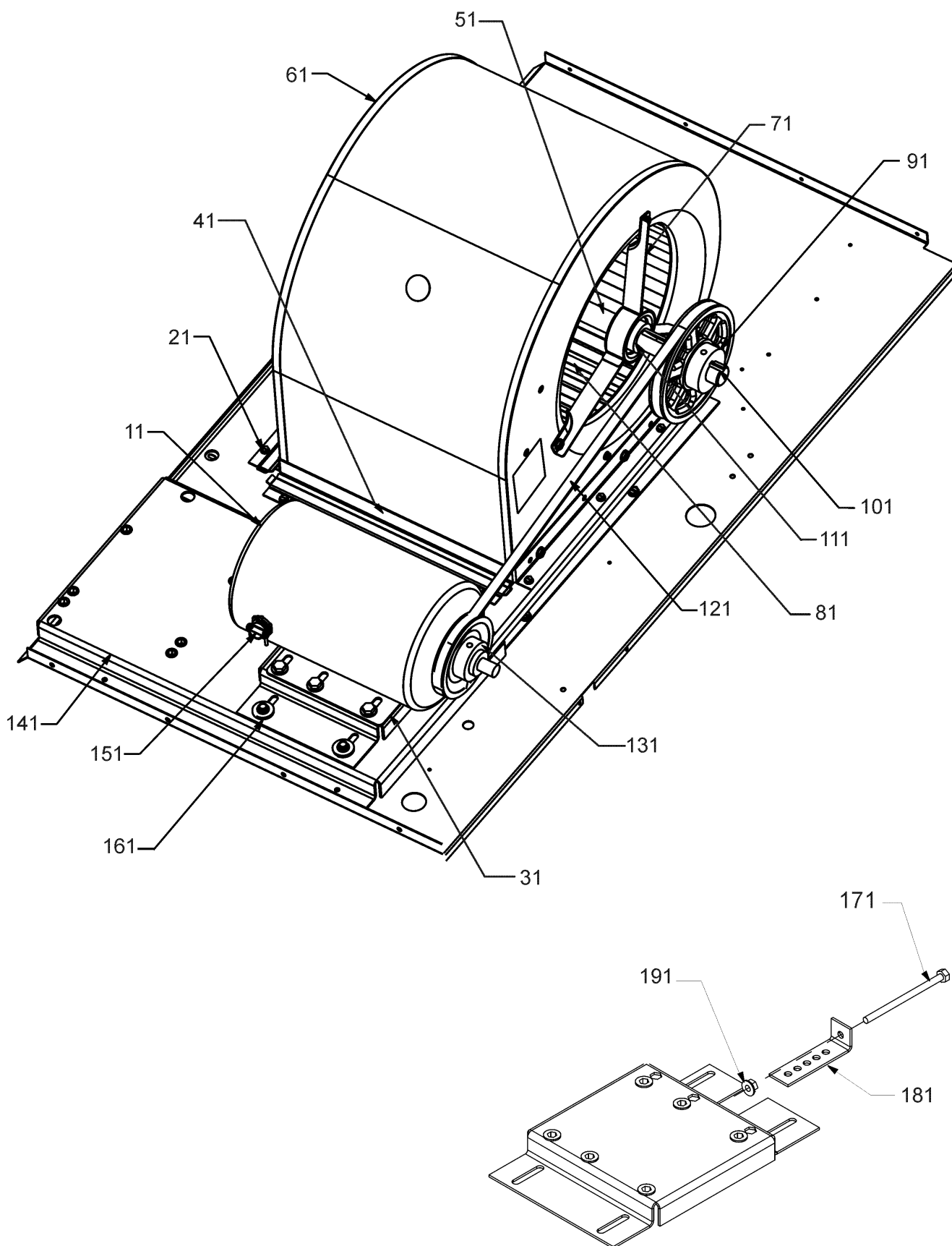
Image 2



Partition Assy

Ref. Part No: No:	Description:	Ref. Part No: No:	Description:
Image 1:		Expanded Model Nomenclature	
11	0201L00141 TUBING ASSY, COND COIL	M1	- DCG0600903BBXXAA
31	0202L00020 TUBING ASSY, EVAP COIL	M2	- DCG0600903BHXQAB
41	0161L00005 DRAIN PAN	M3	- DCG0600903BJXAAB
51	0121L00243 DECK SIDE CHANNEL	M4	- DCG0600903BJXUAA
61	0121L00293 BACK ANGLE-HEAT EXCHANGER (QTY 2)	M5	- DCG0600904BAXXAC
71	0121L00300 SUPPORT POST-DECK	M6	- DCG0600904BBXXAA
81	20162903 PRIMARY LIMIT - BLUE (M1, M2, M3, M4, M5, M6, M7, M8, M9)	M7	- DCG0600904BHXSAC
81	0130F00035 PRIMARY LIMIT - PURPLE 220° (M10, M11, M12, M13, M14, M15, M16, M17, M18, M19, M20, M21, M22, M23, M24, M25, M26, M27, M28, M29, M30)	M8	- DCG0600904BHXBAC
91	0121L00266 HEAT PANEL CHANNEL (QTY 2)	M9	- DCG0600904BXSXAC
101	0121L00299NG GAS VALVE BRACKET (M4)	M10	- DCG0601403BAXXAB
111	0121L01205 BLOWER DECK (M4)	M11	- DCG0601403BBXXAA
111	0121L01442 BLOWER DECK (M1, M2, M3, M5, M6, M7, M8, M9, M10, M11, M12, M13, M14, M15, M16, M17, M18, M19, M20, M21, M22, M23, M24, M25, M26, M27, M28, M29, M30)	M12	- DCG0601403BHXBAB
121	11112501 PRESSURE SWITCH	M13	- DCG0601403BHXFAB
NS	A3468601 PRESSURE SWITCH HOSE	M14	- DCG0601403BHXXAB
NS	0121L00321 SMOKE DETECTOR COVER	M15	- DCG0601403BJSNAB
Image 2:		M16	- DCG0601403BJXAAB
12	0121L00254 COND MOUNTING ANGLE	M17	- DCG0601403BJXUAB
22	0121L00882 BLOCKOFF-CONDENSER	M18	- DCG0601403BXXGAB
32	0121L00939 CONDENSER BLOCKOFF PLATE	M19	- DCG0601403BXXXAB
42	0121L00238 DRAIN PAN SUPPORT	M20	- DCG0601404BAXXAC
52	0121L00287 FILTER ANGLE-VERTICAL (RETURN SIDE)	M21	- DCG0601404BBXXAA
62	0121L00932 FILTER ANGLE-HORIZONTAL (QTY 2)	M22	- DCG0601404BHXAAC
72	0121L01255 ANGLE-FILTER CENTER	M23	- DCG0601404BHXDAC
82	0121L00303 FILTER ANGLE-VERTICAL (HAIRPIN SIDE)	M24	- DCG0601404BXSXAC
NS	0160L00173 AIR FILTER 14 X 20 X 2 (QTY 4)	M25	- DCG0601404BXXXAC
		M26	- DCG0601407BASXAB
		M27	- DCG0601407BBXXAA
		M28	- DCG0601407BHXAAB
		M29	- DCG0601407BXSXAB
		M30	- DCG0601407BXXXAB

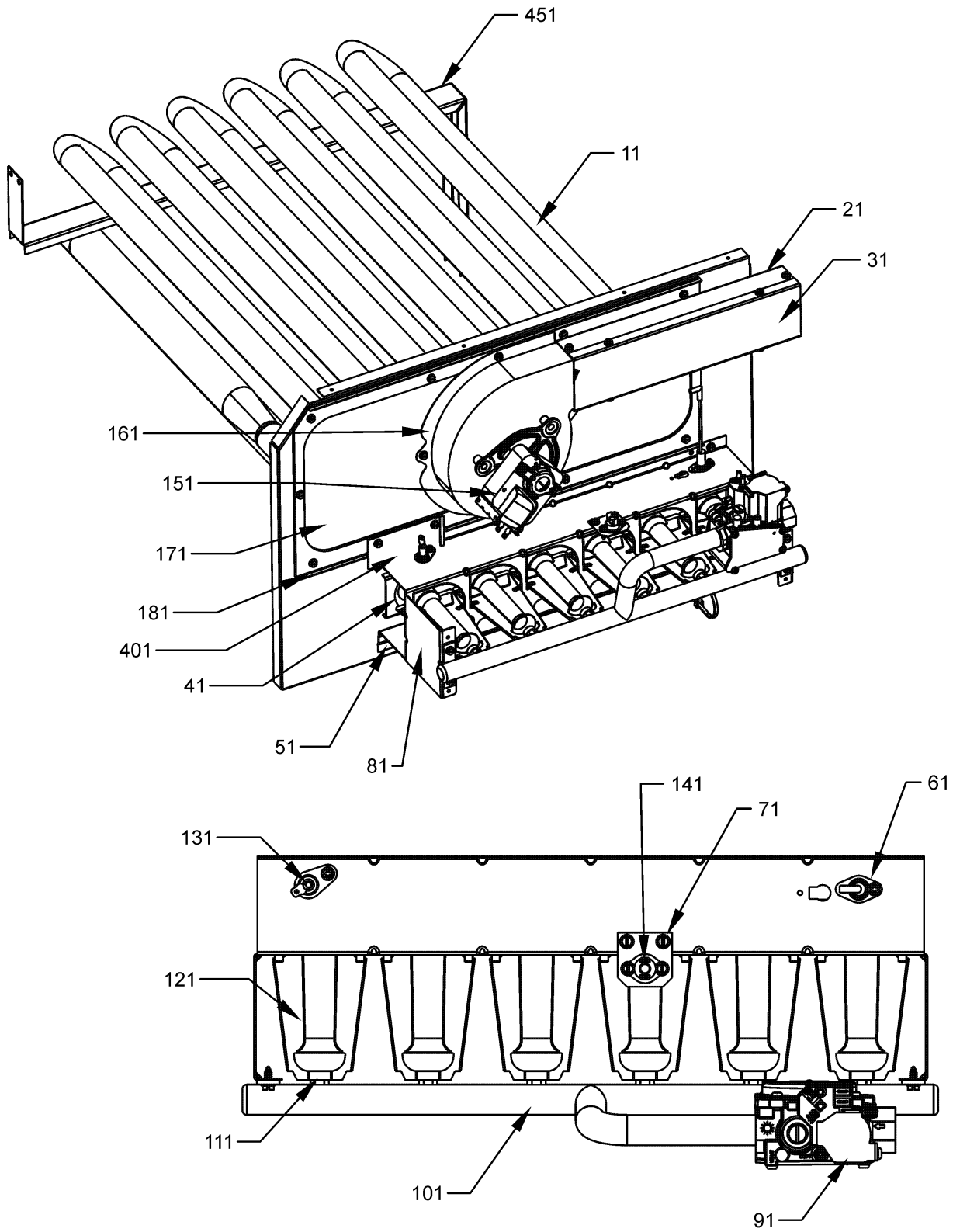
Belt Drive Assy



Belt Drive Assy

Ref. Part No: No:	Description:	Ref. Part No: No:	Description:
<i>Image 1:</i>		Expanded Model Nomenclature	
11	0131L00003 BELT DRIVE MOTOR 1 HP (M1, M2, M3, M4, M5, M6, M7, M8, M9, M10, M11, M12, M13, M14, M15, M16, M17, M18, M19, M20, M21, M22, M23, M24, M25)	M1 - DCG0600903BBXXAA	
11	0131L00004 BELT DRIVE MOTOR 1.5 HP 575V (M26, M27, M28, M29, M30)	M2 - DCG0600903BHXXAB	
21	0121L00297 BLOWER SIDE ANGLE (QTY 3)	M3 - DCG0600903BJXAAB	
31	0121L00899 MOTOR BASE	M4 - DCG0600903BJXUAA	
41	0121L00281 BLOWER MOUNTING ANGLE	M5 - DCG0600904BAXXAC	
51	0163L00005 BELT DRIVE BLOWER SHAFT	M6 - DCG0600904BBXXAA	
61	2539302F BLOWER HOUSING 11 X 10	M7 - DCG0600904BHXXAB	
71	B3201300 MOUNTING BRACKET BEARING (QTY 2)	M8 - DCG0600904BHSFAC	
81	B1368056 BELT DRIVE BLOWER WHEEL	M9 - DCG0600904BHXBAC	
91	B3204303 FIXED SHEAVE AK61	M10 - DCG0600904BXSXAC	
101	B1398604 STEEL KEY (000158812) 2.0"	M11 - DCG0601403BAXXAB	
111	B1399500 BALL BEARING 1.00" (QTY 2)	M12 - DCG0601403BBXXAA	
121	0164L00010 FAN BELT, NOTCHED	M13 - DCG0601403BHXXAB	
131	B2120001 VARIABLE PITCH SHEAVE 1VL44 X 3/8"	M14 - DCG0601403BHXFAB	
141	0121L01203 BLOWER PLATE SUPPORT	M15 - DCG0601403BHXXAB	
151	B1393726 ELECT. CONNECTING BUSHING	M16 - DCG0601403BJSNAB	
161	B1393738 BOLT 1/4-20 X 3/4" (QTY 8)	M17 - DCG0601403BJXAAB	
171	0163M00045 BOLT 1/4-20 X 4"	M18 - DCG0601403BJXUAB	
181	3225000F BELT TIGHTENER ANGLE	M19 - DCG0601403BXXGAB	
191	B1393023 NUT / LOCK .25-20	M20 - DCG0601403BXXXAB	
NS	1864703F BLOWER CUT-OFF	M21 - DCG0601404BAXXAC	
NS	20162905 PRIMARY LIMIT-YELLOW	M22 - DCG0601404BBXXAA	
NS	B1398603 STEEL KEY (000158812) 4.5"	M23 - DCG0601404BHXAAC	
NS	B1392918 WASHER, FLAT 1/4 ID X 1 OD (QTY 4)	M24 - DCG0601404BHXXAC	
		M25 - DCG0601404BXSXAC	
		M26 - DCG0601404BXXXAC	
		M27 - DCG0601407BAXXAB	
		M28 - DCG0601407BBXXAA	
		M29 - DCG0601407BHXAB	
		M30 - DCG0601407BXSXAB	
		M31 - DCG0601407BXXXAB	

Heat Exchanger Assy



Heat Exchanger Assy

Ref. Part
No: No:

Description:

Ref. Part
No: No:

Description:

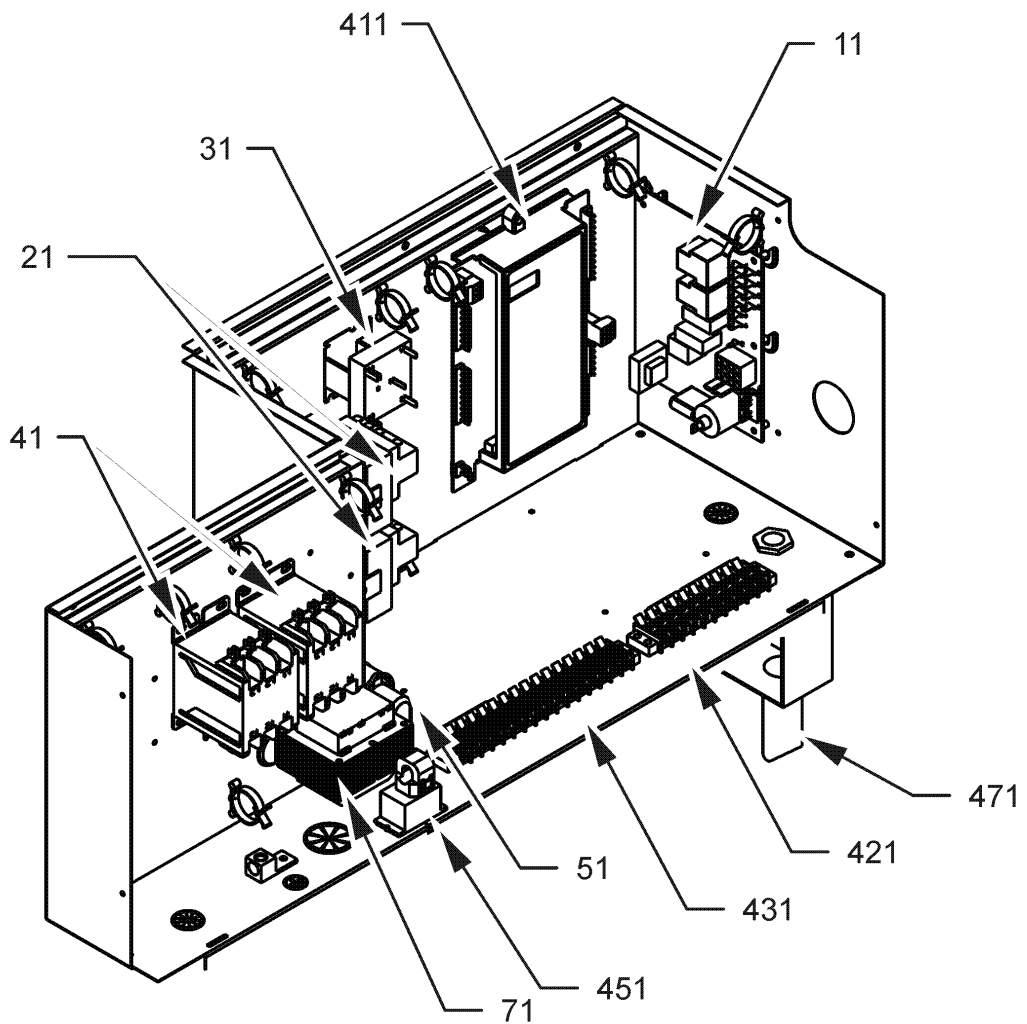
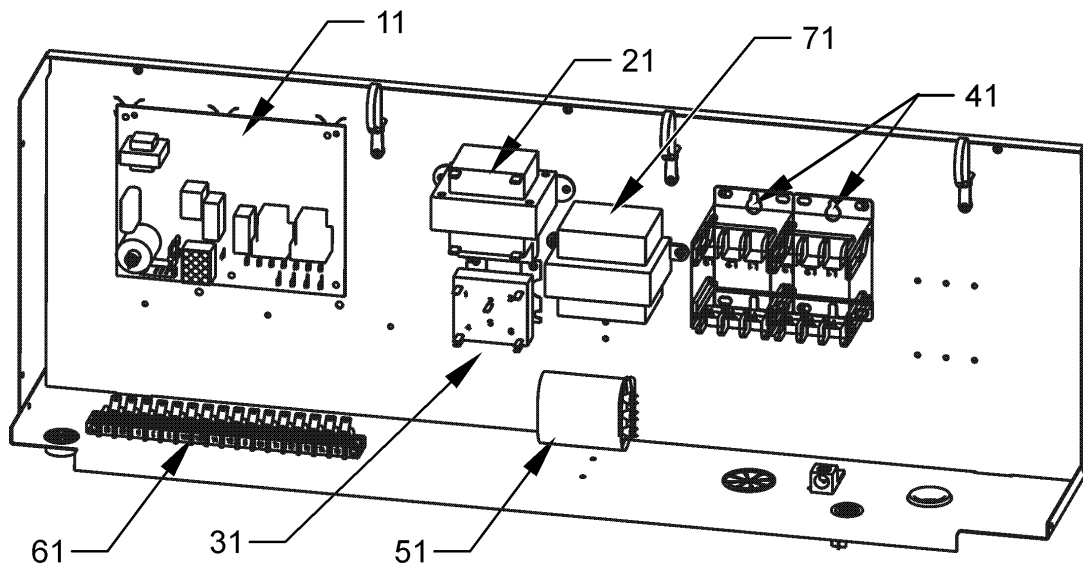
Image 1:

11	0270L00092	PART/TUBE ASSY 4B (M1, M2, M3, M4, M5, M6, M8)
11	0270L00105	PART/TUBE ASSY 4B (M7, M9)
11	0270L00072	PART/TUBE ASSY 6B (M10, M11, M12, M13, M14, M16, M17, M18, M19, M20, M21, M22, M23, M25, M27, M28, M30)
11	0270L00104	PART/TUBE ASSY 6B (M15, M24, M26, M29)
21	0121L00277	FLUE CHANNEL
31	0121L00278	FLUE SIDE COVER
41	11072203	ORIFICE SHIELD (M1, M2, M3, M4, M5, M6, M7, M8, M9)
41	11072205	ORIFICE SHIELD (M10, M11, M12, M13, M14, M15, M16, M17, M18, M19, M20, M21, M22, M23, M24, M25, M26, M27, M28, M29, M30)
51	0121L00267	BURNER SLIDE BRACKET
61	20261709	IGNITOR (QTY 2)
71	0121L00053	FLAME ROLLOUT BRACKET (QTY 2)
81	20190412	BURNER BRACKET 4B (M1, M2, M3, M4, M5, M6, M7, M8, M9)
81	0121F00145	BURNER BRACKET 6B (M10, M11, M12, M13, M14, M15, M16, M17, M18, M19, M20, M21, M22, M23, M24, M25, M26, M27, M28, M29, M30)
91	0151F00000P	GAS VALVE - WHITE-RODGERS 2-STAGE (QTY 2)
101	0163L00026	MANIFOLD - 4 BRNR (M1, M2, M3, M4, M5, M6, M7, M8, M9)
101	0163L00025	MANIFOLD - 6 BRNR (M10, M11, M12, M13, M14, M15, M16, M17, M18, M19, M20, M21, M22, M23, M24, M25, M26, M27, M28, M29, M30)
111	0163F00018	ORIFICE (QTY 4)
121	10735102	BECKETT BURNER (QTY 4)
131	0130F00010	FLAME SENSOR (QTY 2)
141	10123532	MANUAL RESET LIMIT 350°F (QTY 2)
151	0131M00121	ID COMBUSTION BLOWER
161	0154L00020	ID BLOWER GASKET
171	0121L00241	ID BLOWER PLATE (M10, M11, M12, M13, M14, M15, M16, M17, M18, M19, M20, M21, M22, M23, M24, M25, M26, M27, M28, M29, M30)
171	0121L00284	ID BLOWER PLATE 4 BRNR (M1, M2, M3, M4, M5, M6, M7, M8, M9)
181	0154L00018	ID BLOWER PLATE GASKET 4 BRNR (M1, M2, M3, M4, M5, M6, M7, M8, M9)
181	0154L00017	ID BLOWER PLATE GASKET 6 BRNR (M10, M11, M12, M13, M14, M15, M16, M17, M18, M19, M20, M21, M22, M23, M24, M25, M26, M27, M28, M29, M30)
401	0121L00268	RETAINER-BURNER ASSY (M10, M11, M12, M13, M14, M15, M16, M17, M18, M19, M20, M21, M22, M23, M24, M25, M26, M27, M28, M29, M30)
451	0121L00325	HEAT EXCHANGE BRACKET
NS	0163L00072	SCREEN-FLUE

Expanded Model Nomenclature

M1 - DCG0600903BBXXAA
M2 - DCG0600903BHXXAB
M3 - DCG0600903BJXXAB
M4 - DCG0600903BJXUAA
M5 - DCG0600904BAXXAC
M6 - DCG0600904BBXXAA
M7 - DCG0600904BHXXAB
M8 - DCG0600904BHXBAC
M9 - DCG0600904BXSXAC
M10 - DCG0601403BAXXAB
M11 - DCG0601403BBXXAA
M12 - DCG0601403BHXBAB
M13 - DCG0601403BHXXAB
M14 - DCG0601403BHXXAB
M15 - DCG0601403BJSNAB
M16 - DCG0601403BJXXAB
M17 - DCG0601403BJXUAB
M18 - DCG0601403BXXGAB
M19 - DCG0601403BXXXAB
M20 - DCG0601404BAXXAC
M21 - DCG0601404BBXXAA
M22 - DCG0601404BHXAC
M23 - DCG0601404BHXDAC
M24 - DCG0601404BXSXAC
M25 - DCG0601404BXXXAC
M26 - DCG0601407BAXXAB
M27 - DCG0601407BBXXAA
M28 - DCG0601407BHXAB
M29 - DCG0601407BXSXAB
M30 - DCG0601407BXXXAB

Control Box Assy



CONTROL BOX
FOR MODELS
WITH DDC CONTROL

Control Box Assy

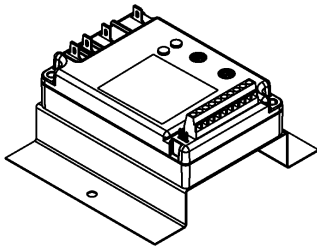
Ref. Part No: No:	Description:	Ref. Part No: No:	Description:
Image 1:		Expanded Model Nomenclature	
11	PCBAG123	IGNITION BOARD, DSI INTEGRATED	M1 - DCG0600903BBXXAA
21	0130M00138	TRANSFORMER 208/230, 24V (M1, M2, M3, M4, M10, M11, M12, M13, M14, M15, M16, M17, M18, M19)	M2 - DCG0600903BHXQAB
21	0130M00145	TRANSFORMER 480V to 24V, 75VA (M5, M6, M7, M8, M9, M20, M21, M22, M23, M24, M25)	M3 - DCG0600903BJXAAB
21	0130M00148	TRANSFORMER 575V to 24V, 75VA (M26, M27, M28, M29, M30)	M4 - DCG0600903BJXUAA
31	0130M00025	24V RELAY	M5 - DCG0600904BAXXAC
41	CONT3P025024V	CONTACTOR 25 AMP, 3P, 24V (M5, M6, M7, M8, M9, M20, M21, M22, M23, M24, M25, M26, M27, M28, M29, M30)	M6 - DCG0600904BBXXAA
41	CONT3P030024V	CONTACTOR 30 AMP, 3P, 24V (M1, M2, M3, M4, M10, M11, M12, M13, M14, M15, M16, M17, M18, M19)	M7 - DCG0600904BHFSAC
51	CAP030000440LA	CAPACITOR 3/440V (M26, M27, M28, M29, M30)	M8 - DCG0600904BHXBAC
51	CAP050000370LA	CAPACITOR 5/370V (M1, M2, M3, M4, M10, M11, M12, M13, M14, M15, M16, M17, M18, M19)	M9 - DCG0600904BXSXAC
51	CAP075000370LA	CAPACITOR 7.5/370V (M5, M6, M7, M8, M9, M20, M21, M22, M23, M24, M25)	M10 - DCG0601403BAXXAB
61	0130M00038	TERMINAL BOARD	M11 - DCG0601403BBXXAA
71	0130M00146	TRANSFORMER 480V TO 230V, 150VA (M5, M6, M7, M8, M9, M20, M21, M22, M23, M24, M25)	M12 - DCG0601403BHXBAB
71	0130M00147	TRANSFORMER 575V TO 230V, 150VA (M26, M27, M28, M29, M30)	M13 - DCG0601403BHXFAB
411	PCBCG100	DDC Controller (M1, M6, M11, M21, M27)	M14 - DCG0601403BHXXAB
421	0130M00274	TERMINAL BOARD (M1, M6, M11, M21, M27)	M15 - DCG0601403BJSNAB
431	0130M00275	TERMINAL BOARD (M1, M6, M11, M21, M27)	M16 - DCG0601403BJXAAB
451	0259L00368	CURRENT SWITCH WITH TERMS (M1, M6, M11, M21, M27)	M17 - DCG0601403BJXUAB
471	0130L00108	OD AIR TEMP SENSOR (M1, M6, M11, M21, M27)	M18 - DCG0601403BXXGAB
NS	20520901	CAPACITOR STRAP	M19 - DCG0601403BXXXAB
NS	0259L00074	CONTROL HARNESS (M1, M2, M3, M4, M10, M11, M12, M13, M14, M15, M16, M17, M18, M19)	M20 - DCG0601404BAXXAC
NS	0259L00075	CONTROL HARNESS (M5, M6, M7, M8, M9, M20, M21, M22, M23, M24, M25, M26, M27, M28, M29, M30)	M21 - DCG0601404BBXXAA
NS	0130L00112	DUCT TEMP SENSOR (M1, M6, M11, M21, M27)	M22 - DCG0601404BHXAAC
NS	0259L00179	HARNESS, ECONOMIZER	M23 - DCG0601404BHXDAC
NS	0259L00125	HARNESS, WIRING	M24 - DCG0601404BXSXAC
NS	0259L00090	WIRE HARNESS-SMOKE DETECTOR (M2, M4, M15, M17, M18, M23)	M25 - DCG0601404BXXXAC
NS	0259L00054	WIRING HARNESS (M1, M2, M3, M4, M10, M11, M12, M13, M14, M15, M16, M17, M18, M19, M26, M27, M28, M29, M30)	M26 - DCG0601407BASXAB
NS	0259L00060	WIRING HARNESS (M5, M6, M7, M8, M9, M20, M21, M22, M23, M24, M25)	M27 - DCG0601407BBXXAA
NS	0259L00065	WIRING HARNESS	M28 - DCG0601407BHXAAB
NS	0259L00069	WIRING HARNESS	M29 - DCG0601407BXSXAB
			M30 - DCG0601407BXXXAB

Accessory Parts List

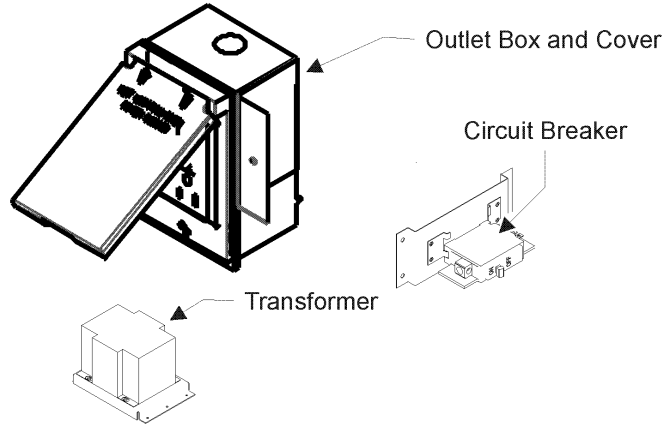
ACCESSORY PARTS LIST

NOTE: NOT ALL OPTIONS AVAILABLE FOR ALL PRODUCTS

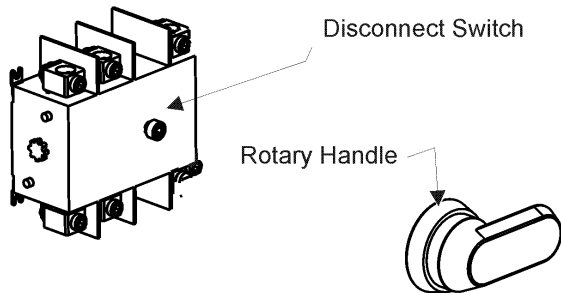
LOW AMBIENT KITS



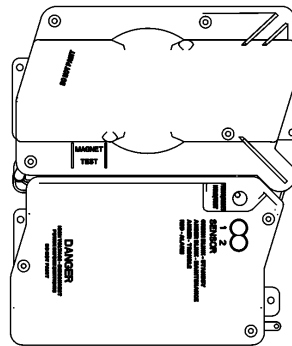
GFCI CONVENIENCE OUTLET



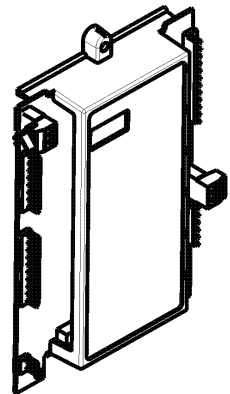
DISCONNECT MODULE (NON-FUSED)



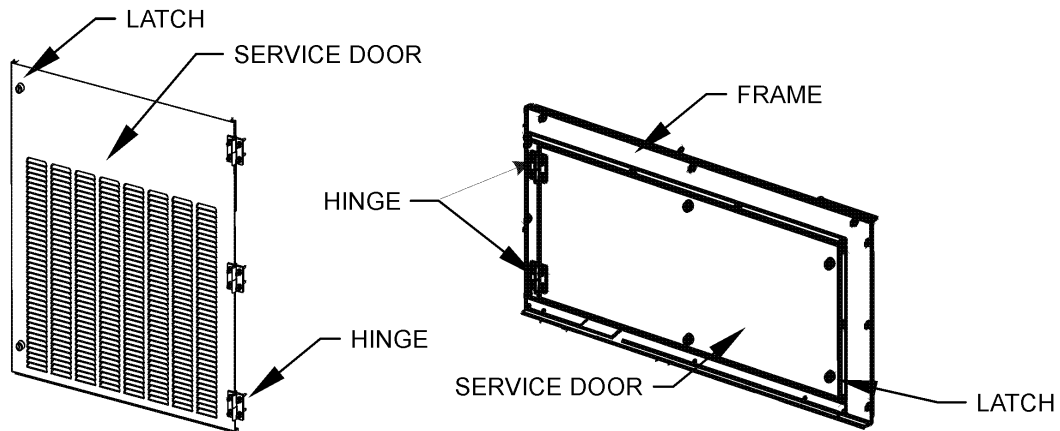
SMOKE DETECTORS



DDC CONTROL



HINGED DOOR ASSEMBLIES



Accessory Parts List

Ref. Part No:	Description:	Ref. Part No:	Description:
Image 1:		Expanded Model Nomenclature	
NS 0121L00316	BRACKET-CONV OUTLET MOUNT (M2, M3, M4, M7, M8, M12, M13, M15, M16, M17, M18, M22, M28)	M1 - DCG0600903BBXXAA	
NS 0121L00332	BRACKET-SMOKE DETECTOR (M2, M4, M15, M17, M18, M23)	M2 - DCG0600903BHXXAB	
NS 0130M00065	CIRCUIT BREAKER, CONVENIENCE OUTLET (M2, M8, M12, M15)	M3 - DCG0600903BJXAAB	
NS 0121L00837NG	DISCONNECT COVER (M2, M3, M4, M7, M8, M12, M13, M14, M15, M16, M17, M22, M23, M28)	M4 - DCG0600903BJXUAA	
NS 0130L00012	GANG BOX-GFCI OUTLET (M2, M3, M4, M7, M8, M12, M13, M15, M16, M17, M18, M22, M28)	M5 - DCG0600904BAXXAC	
NS 0130L00039	HANDLE, ROTARY (M2, M3, M4, M7, M8, M12, M13, M14, M15, M16, M17, M22, M23, M28)	M6 - DCG0600904BBXXAA	
NS LAKT01	LOW AMBIENT KIT (M2, M4, M7, M13, M17)	M7 - DCG0600904BHSFAC	
NS 0161G00012	POWER OUTLET BOX (M2, M3, M4, M7, M8, M12, M13, M15, M16, M17, M18, M22, M28)	M8 - DCG0600904BHXBAC	
NS 0130L00103	RECEPTACLE-GFCI OUTLET (M2, M3, M4, M7, M8, M12, M13, M15, M16, M17, M18, M22, M28)	M9 - DCG0600904BXSXAC	
NS 0130L00042	SHAFT, CUT (M2, M3, M4, M7, M8, M12, M13, M14, M15, M16, M17, M22, M23, M28)	M10 - DCG0601403BAXXAB	
NS 0130L00049	SHAFT, DISCONNECT (M2, M3, M4, M7, M8, M12, M13, M14, M15, M16, M17, M22, M23, M28)	M11 - DCG0601403BBXXAA	
NS D4120	SMOKE DETECTOR, PHOTO 4WIRE (M2, M4, M15, M17, M18, M23)	M12 - DCG0601403BHXBAB	
NS 0130L00046	SWITCH-DISCONNECT 60A (M2, M3, M4, M7, M8, M12, M13, M14, M15, M16, M17, M22, M23, M28)	M13 - DCG0601403BHXFAB	
NS 0130M00061	TRANSFORMER, CONVENIENCE OUTLET (M2, M8, M12, M15)	M14 - DCG0601403BHXXAB	
		M15 - DCG0601403BJSNAB	
		M16 - DCG0601403BJXAAB	
		M17 - DCG0601403BJXUAB	
		M18 - DCG0601403BXXGAB	
		M19 - DCG0601403BXXXAB	
		M20 - DCG0601404BAXXAC	
		M21 - DCG0601404BBXXAA	
		M22 - DCG0601404BHXAAC	
		M23 - DCG0601404BHXDAC	
		M24 - DCG0601404BXSXAC	
		M25 - DCG0601404BXXXAC	
		M26 - DCG0601407BASXAB	
		M27 - DCG0601407BBXXAA	
		M28 - DCG0601407BHXAAB	
		M29 - DCG0601407BXSXAB	
		M30 - DCG0601407BXXXAB	