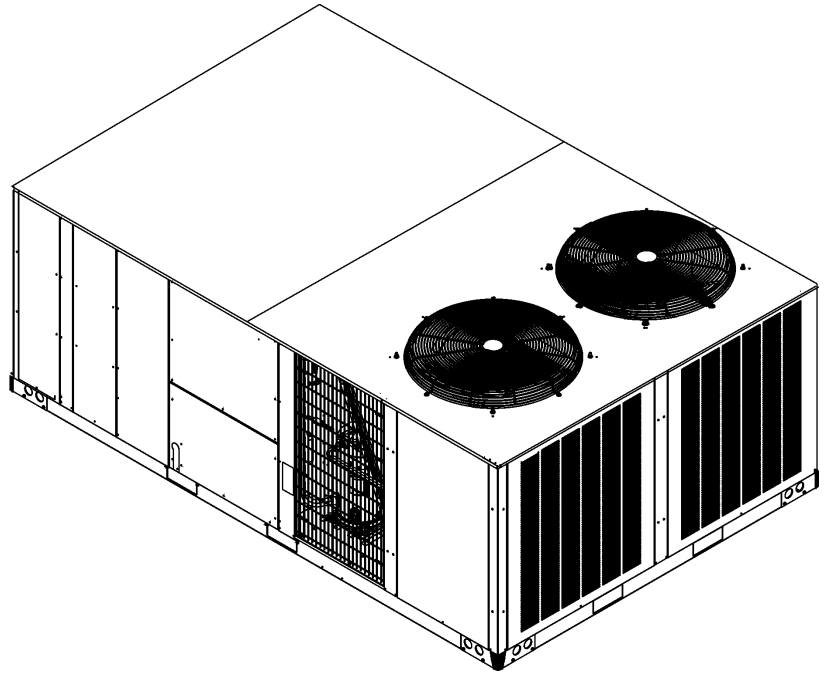


**Commercial 25 Ton Package Cooling Units (EXPORT)**

DCC300XXX6BXXXAA

DCC300XXX6BXXXAB



This manual is to be used by qualified technicians only.

This manual replaces RP-D1094A.

© 2017 - 2018 **DAIKIN COMPANY, L.P.** ♦ 5151 San Felipe St., Suite 500 ♦ Houston, TX 77056

# Important Information

---

## Index

|                              |        |
|------------------------------|--------|
| Functional Parts List .....  | 3      |
| Illustration and Parts ..... | 4 - 17 |

*Views shown are for parts illustrations only, not servicing procedures.*

### Text Codes:

AR - As Required

NA - Not Available

NS - Not Shown

00000000 - See Note

QTY - Quantity Example (QTY 3) (If Quantity not shown, Quantity = 1)

M - Model Example (M1) (If M Code not shown, then part is used on all Models)

### Expanded Model Nomenclature:

|   |
|---|
| Example<br>M1 - Model#1<br>M2 - Model#2<br>M3 - Model#3 |
|---|

Daikin Company, L.P. is not responsible for personal injury or property damage resulting from improper service. Review all service information before beginning repairs.

Warranty service must be performed by an authorized technician, using authorized factory parts. If service is required after the warranty expires, Daikin Company, L.P. also recommends contacting an authorized technician and using authorized factory parts.

Daikin Company, L.P. reserves the right to discontinue, or change at any time, specifications or designs without notice or without incurring obligations.

For assistance within the U.S.A. contact:

Equipment Support  
Daikin North America, LLC  
19001 Kermier Road  
Waller, Texas 77484  
855-770-5678-Telephone  
713-863-2382-Facsimile

For assistance outside the U.S.A. contact:

International Division  
Daikin North America, LLC  
19001 Kermier Road  
Waller, Texas 77484  
713-861-2500-Telephone  
713-863-2382-Facsimile

# Functional Parts

## Part

## No: Description:

---

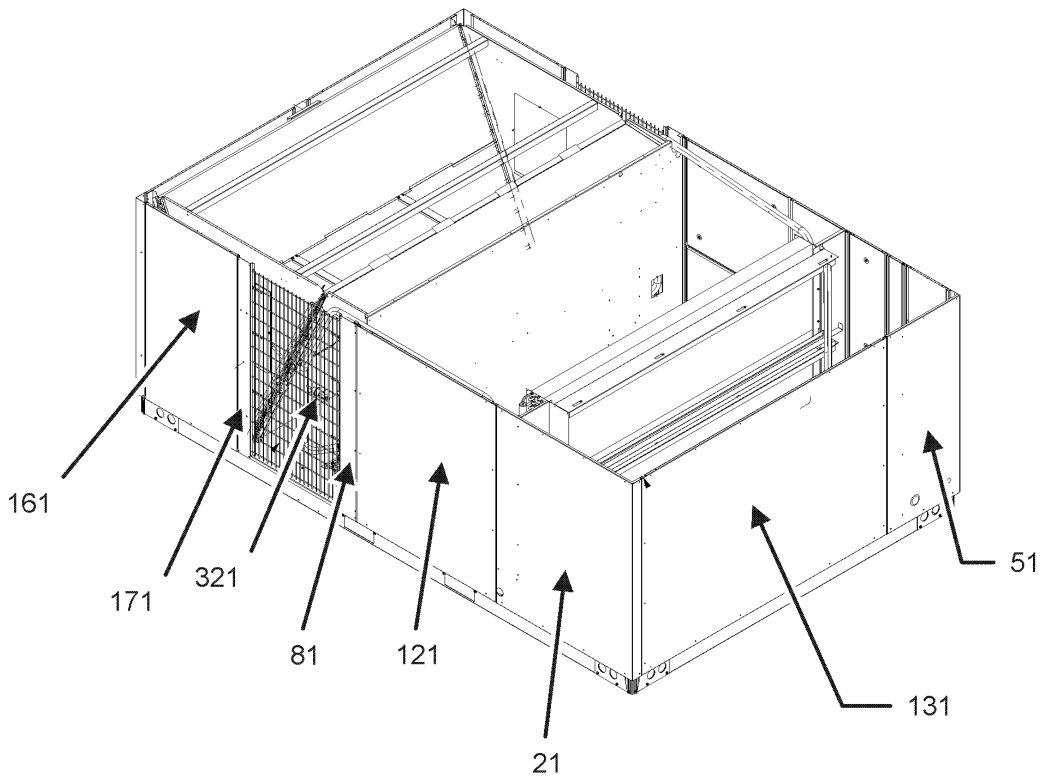
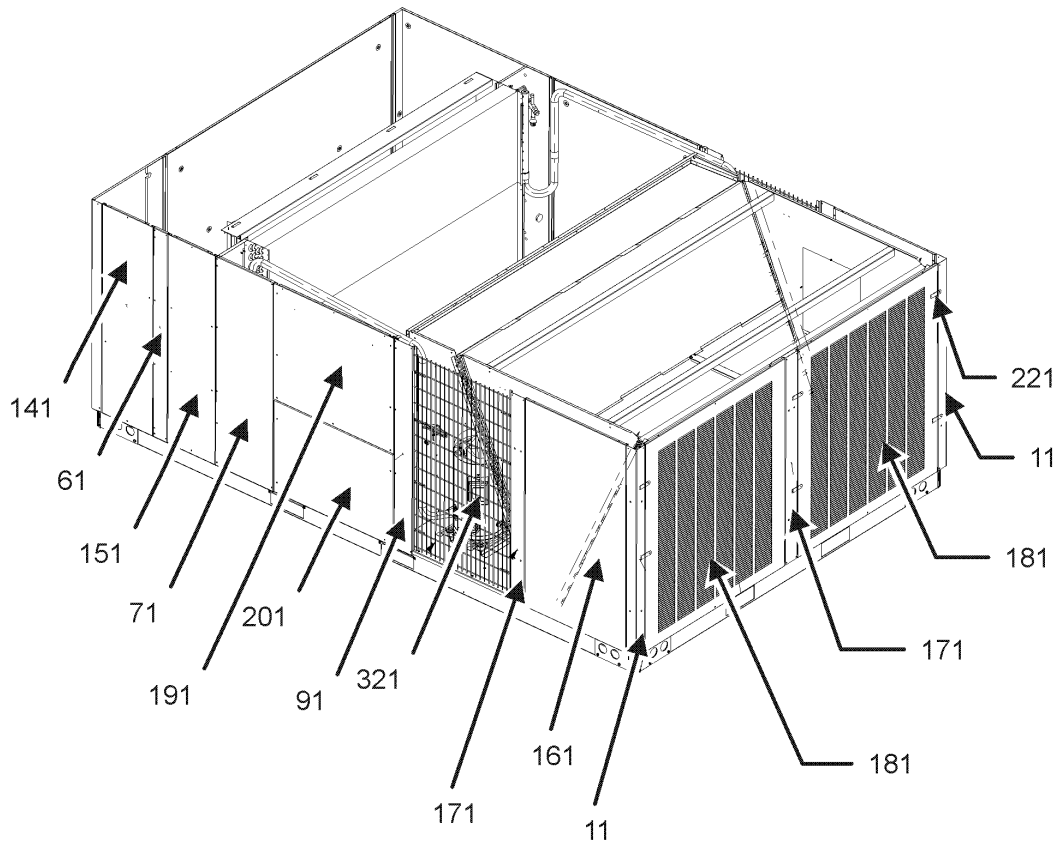
|                |                                      |
|----------------|--------------------------------------|
| 0271L00027     | 150-15R BD 1.44 TWIN BLOWER          |
| 0130M00242     | 24V RELAY (QTY 2)                    |
| 0130M00249     | AUXILLARY SWITCH (QTY 2)             |
| ZP137KCETF7250 | Compressor 137000 400/3/60 (QTY 2)   |
| CONT3P030024V  | CONTACTOR 30 AMP, 3P, 24V (QTY 5)    |
| 0130L00021     | CRANK CASE HEATER, 90W, 480V (QTY 2) |
| 0130M00412     | CUT-OUT SWITCH, HIGH PRESSURE (M2)   |
| 0130M00074     | CUT-OUT SWITCH, HIGH PRESSURE (M1)   |
| 0130M00087     | CUT-OUT SWITCH, LOW PRESSURE (QTY 2) |
| 0130M00042     | DISTRIB. BLOCK, 7.5-25 TON           |
| PCBFM103       | ELECTRONIC BLOWER TIME DELAY         |
| 0164L00013     | FAN BELT-NOTCHED                     |
| 0131L00051     | MOTOR, 7.5 HP BD 230,460V            |
| 0130L00105     | PHASE MONITOR (M2)                   |
| 0130M00240     | TERMINAL BOARD                       |
| 802007090      | TERMINAL BOARD                       |
| 0130M00081     | TRANSFORMER 380V, 75VA, RESETT       |

### Expanded Model Nomenclature

M1 - DCC300XXX6BXXXAA

M2 - DCC300XXX6BXXXAB

# CABINET ASSEMBLY



# CABINET ASSEMBLY

| <b>Ref. Part<br/>No: No:</b> | <b>Description:</b> | <b>Ref. Part<br/>No: No:</b> | <b>Description:</b> |
|------------------------------|---------------------|------------------------------|---------------------|
|------------------------------|---------------------|------------------------------|---------------------|

---

**Image 1:**

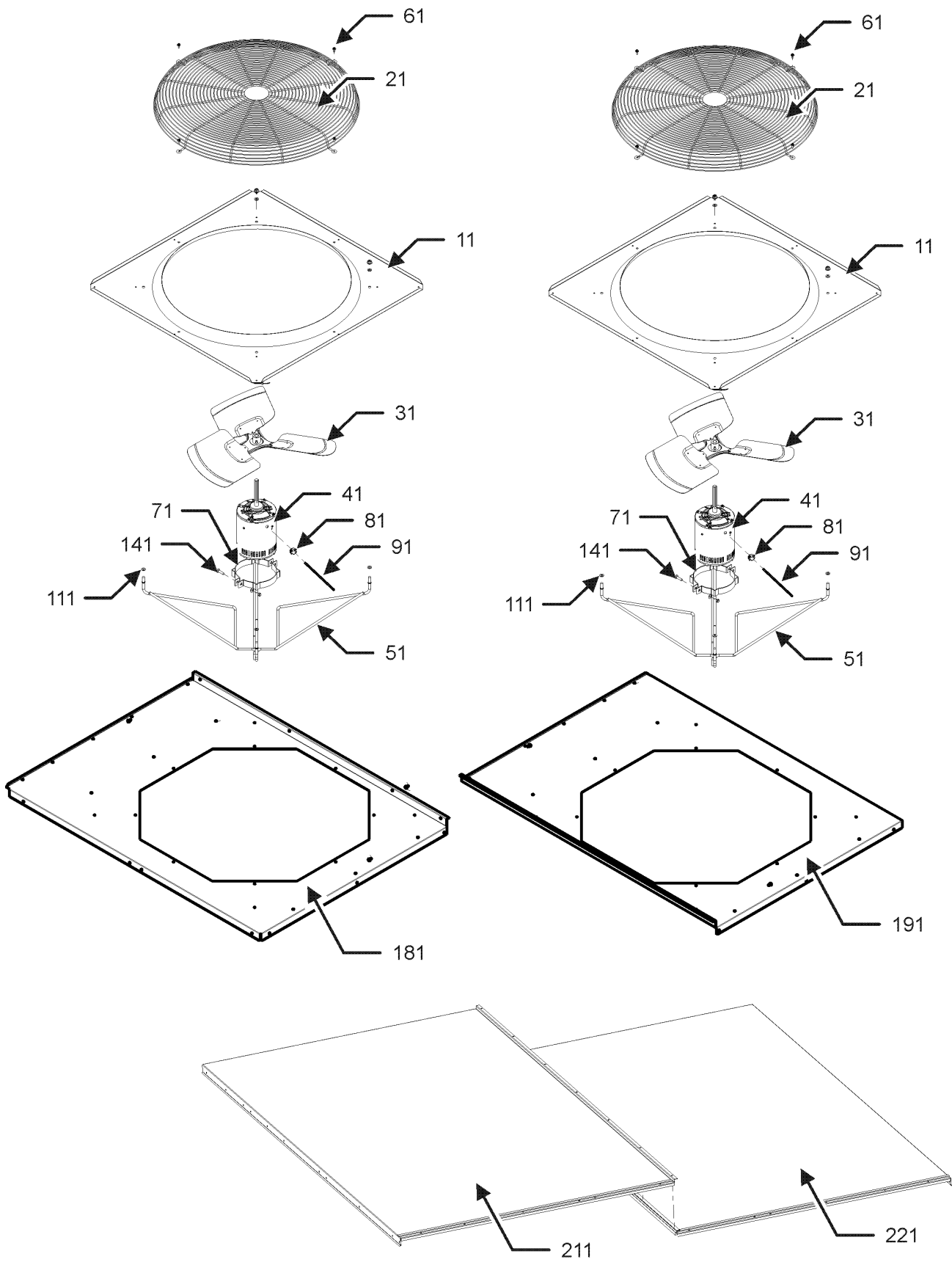
|     |              |                           |
|-----|--------------|---------------------------|
| 11  | 0121L01143NG | POST, CORNER (QTY 2)      |
| 21  | 0121L00681NG | EVAPORATOR PANEL          |
| 51  | 0121L00679NG | CONTROL CORNER PANEL      |
| 61  | 0121L02048NG | CONTROL/FILTER POST       |
| 71  | 0121L00710NG | POST/BLOWER DOOR          |
| 81  | 0121L00903NG | POST PARTITION-EVAP SIDE  |
| 91  | 0121L00906NG | POST-PARTITION, (COOL) HT |
| 121 | 0121L00685NG | BLOWER DOOR-EVAP SIDE     |
| 131 | 0121L00688NG | ACCESSORY PANEL           |
| 141 | 0121L00687NG | CONTROL DOOR              |
| 151 | 0121L00686NG | FILTER DOOR               |
| 161 | 0121L00907NG | PANEL-COND SIDE (QTY 2)   |
| 171 | 0121L01144NG | POST, COND PANEL (QTY 3)  |
| 181 | 0121L01174NG | LOUVER PANEL (QTY 2)      |
| 191 | 0121L00713NG | BLOWER DOOR-GAS SIDE      |
| 201 | 0121L00708NG | DOOR-ELECTRIC HEAT        |
| 221 | 0121L00476NG | TURNBUCKLE DOOR (QTY 16)  |
| 321 | 0152L00000   | GRILLE-CONDENSER (QTY 2)  |
| NS  | M0204317     | SCREW-MACHINE (QTY 16)    |

**Expanded Model Nomenclature**

M1 - DCC300XXX6BXXXAA

M2 - DCC300XXX6BXXXAB

# TOP PANEL ASSEMBLY



# TOP PANEL ASSEMBLY

| Ref. Part No: No: | Description: | Ref. Part No: No: | Description: |
|-------------------|--------------|-------------------|--------------|
|-------------------|--------------|-------------------|--------------|

---

**Image 1:**

|     |              |                                      |
|-----|--------------|--------------------------------------|
| 11  | 0121L01151NG | FAN PANEL 30" (QTY 4)                |
| 21  | 0152L00003   | FAN GRILLE (QTY 4)                   |
| 31  | 0150M00044   | FAN BLADE (QTY 4)                    |
| 41  | 0131M00697   | MOTOR, COND (QTY 4)                  |
| 51  | 0163L00080   | MOTOR MOUNT (QTY 4)                  |
| 61  | 0163M00097   | WASHERED SCREW (QTY 8)               |
| 71  | 0163L00082   | MOTOR CLAMP BAND (QTY 4)             |
| 81  | B1393726     | ELECT. CONNECTING BUSHING (QTY 4)    |
| 91  | 0259L00219   | POWER HARNESS, CM PIGTAIL (QTY 4)    |
| 111 | B1392912     | FLAT WASHER 3/8 ID X 7/8 OD (QTY 16) |
| 141 | 0163M00275   | CARRIAGE BOLT (QTY 8)                |
| 181 | 0121L01081NG | TOP, FAN C1                          |
| 191 | 0121L01094NG | TOP, FAN C2                          |
| 211 | 0121L00693NG | TOP-CONTROL SIDE                     |
| 221 | 0121L00694NG | TOP PANEL ASSY                       |

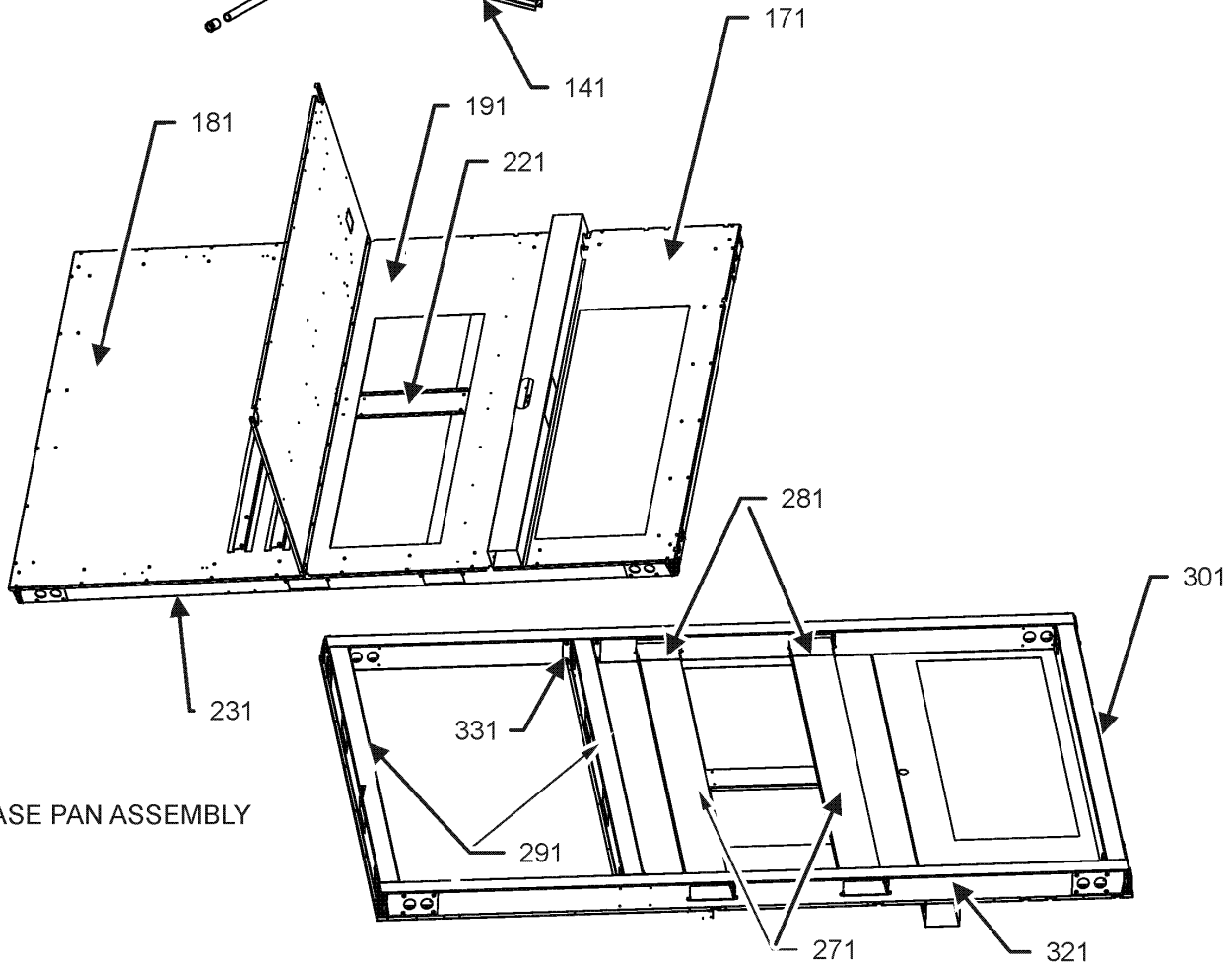
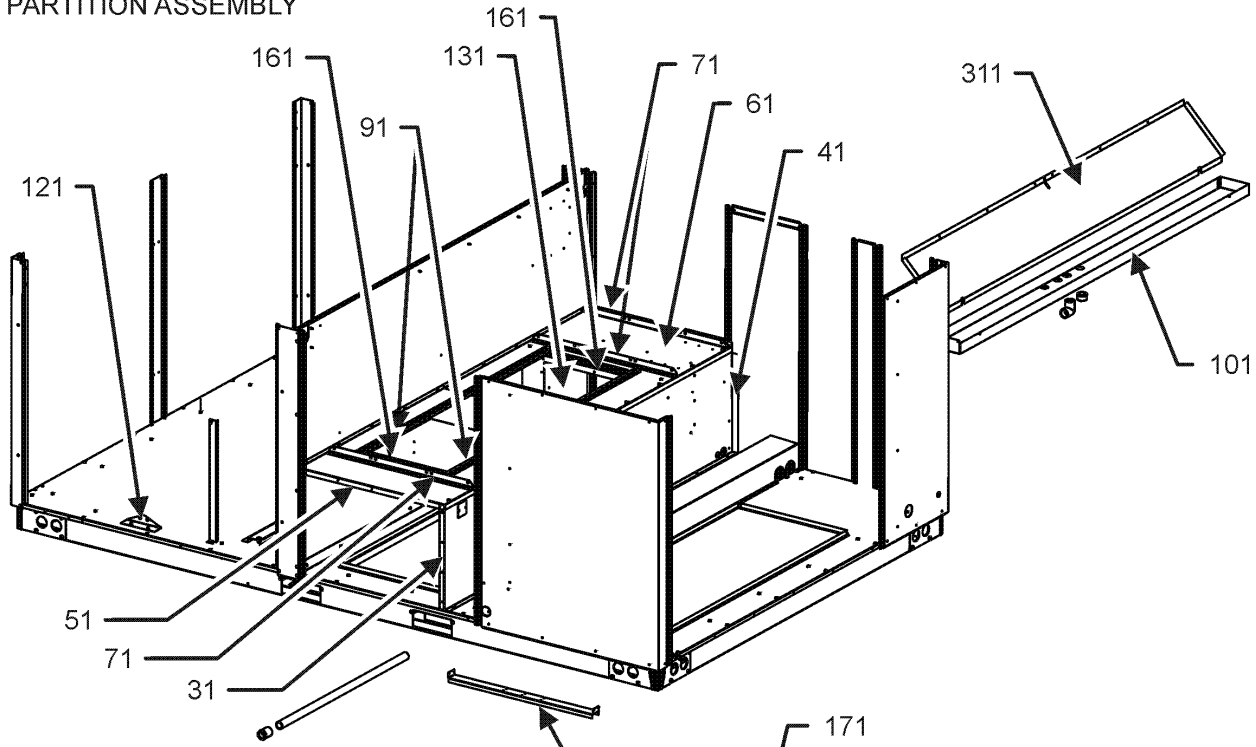
**Expanded Model Nomenclature**

M1 - DCC300XXX6BXXXAA

M2 - DCC300XXX6BXXXAB

# PARTITION ASSEMBLY

PARTITION ASSEMBLY



BASE PAN ASSEMBLY

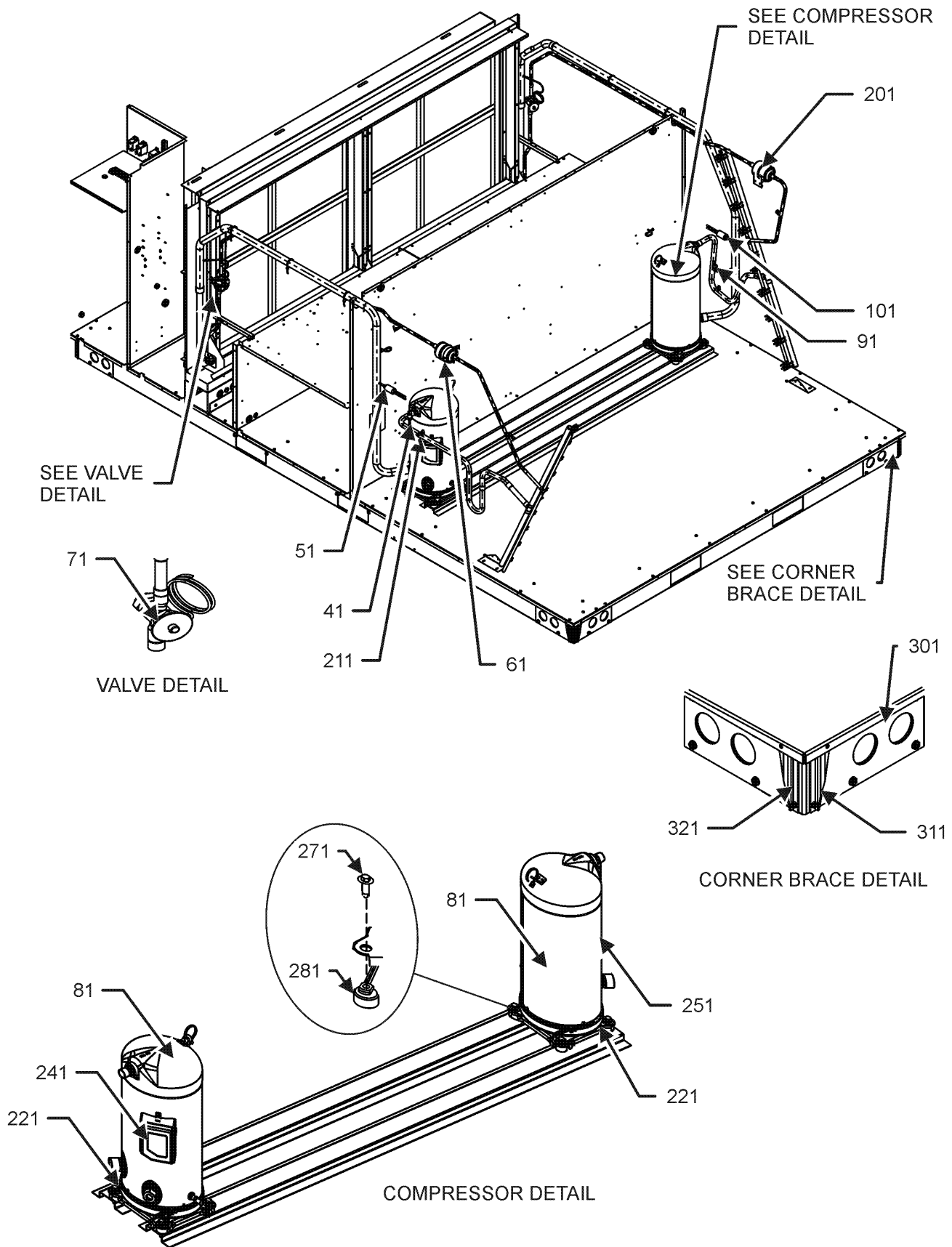
# PARTITION ASSEMBLY

| Ref. Part No:   | No:        | Description:                     | Ref. Part No: | No: | Description: |
|-----------------|------------|----------------------------------|---------------|-----|--------------|
| <i>Image 1:</i> |            |                                  |               |     |              |
| 31              | 0121L01163 | DECK, SIDE DUCT END              |               |     |              |
| 41              | 0121L01162 | DECK, SIDE HEAT END              |               |     |              |
| 51              | 0121L01160 | BLOWER DECK, EVAP SIDE           |               |     |              |
| 61              | 0121L01161 | BLOWER DECK, MOTOR SIDE          |               |     |              |
| 71              | 0121L01431 | MOTOR MOUNT ANGLE (QTY 3)        |               |     |              |
| 91              | 0121L00478 | BLOWER DECK RAIL (QTY 2)         |               |     |              |
| 101             | 0121L01130 | DRAIN PAN - EVAPORATOR           |               |     |              |
| 121             | 0121L00913 | BRACKET-COND/BASEPAN (QTY 2)     |               |     |              |
| 131             | 0121L00591 | ELECTRIC HEAT MOUNTING PLATE     |               |     |              |
| 141             | 0121L00592 | ELECTRIC HEAT SUPPORT            |               |     |              |
| 161             | 0121L00481 | BLOWER RAIL (QTY 2)              |               |     |              |
| 171             | 0121L00947 | BASEPAN, RETURN SIDE             |               |     |              |
| 181             | 0121L00902 | BASEPAN, OUTDOOR                 |               |     |              |
| 191             | 0121L00948 | BASE PAN-SUPPLY                  |               |     |              |
| 221             | 0121L00605 | FORK BOARD PLATE                 |               |     |              |
| 231             | 0121L00720 | SIDE RAIL                        |               |     |              |
| 271             | 0141L00029 | FORK BOARD (QTY 2)               |               |     |              |
| 281             | 0121L00724 | FORK BOARD BRACKET (QTY 4)       |               |     |              |
| 291             | 0121L00721 | BASE RAIL, CONDENSER END (QTY 2) |               |     |              |
| 301             | 0121L00722 | BASE RAIL, ACCESSORY END         |               |     |              |
| 311             | 0121L01158 | SHIELD, BLOWOFF                  |               |     |              |
| 321             | 0121L00719 | CONTROL SIDE BASE RAIL           |               |     |              |
| 331             | 0121L00625 | COMPRESSOR RAIL BRACKET (QTY 4)  |               |     |              |
| NS              | 0163L00050 | CAP PVC, 1" FIPT                 |               |     |              |
| NS              | 0163L00049 | ELBOW-PVC 90, 1" SLIP/FIPT       |               |     |              |
| NS              | 0121L00593 | FLUE HOLE COVER                  |               |     |              |
| NS              | 0164G00004 | GROMMET-HORSESHOE 1.75 (QTY 2)   |               |     |              |
| NS              | 0121L00321 | SMOKE DETECTOR COVER             |               |     |              |

**Expanded Model Nomenclature**

|                       |
|-----------------------|
| M1 - DCC300XXX6BXXXAA |
| M2 - DCC300XXX6BXXXAB |

# TUBING AND COMPRESSOR ASSEMBLY



# TUBING AND COMPRESSOR ASSEMBLY

| Ref. Part No: No: | Description: | Ref. Part No: No: | Description: |
|-------------------|--------------|-------------------|--------------|
|-------------------|--------------|-------------------|--------------|

**Image 1:**

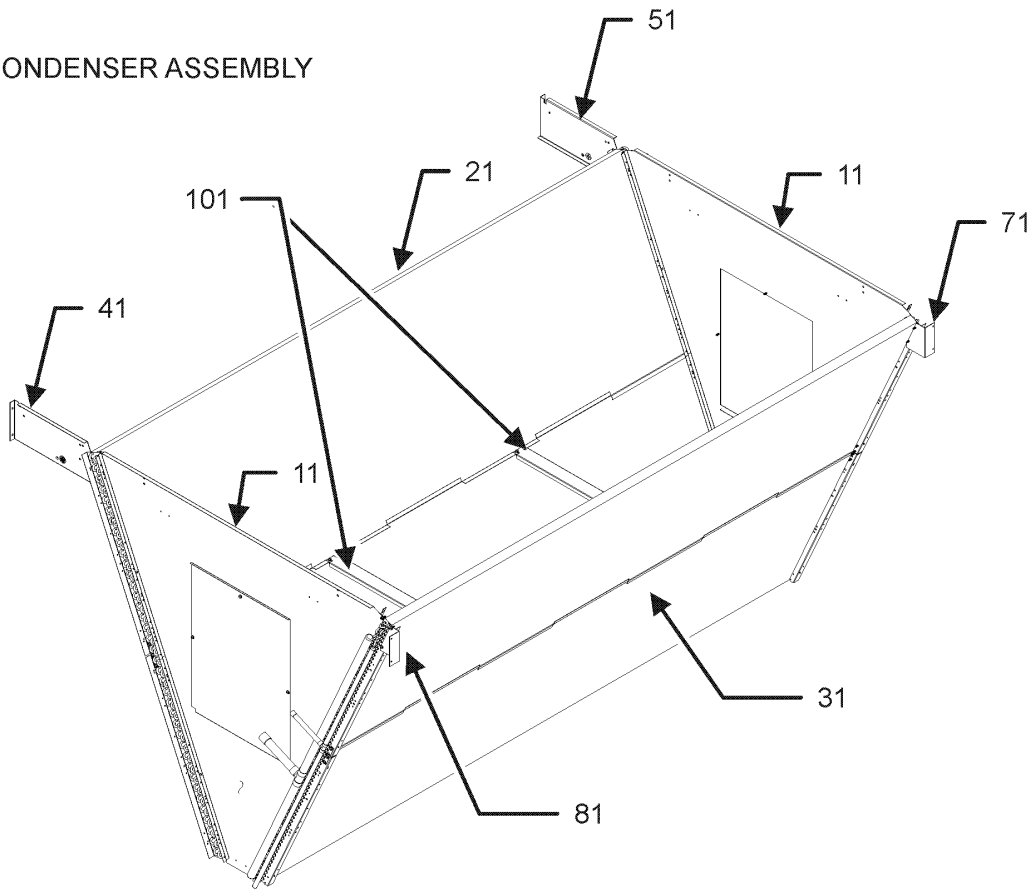
|     |                |                                      |
|-----|----------------|--------------------------------------|
| 41  | 0130M00412     | CUT-OUT SWITCH, HIGH PRESSURE (M2)   |
| 41  | 0130M00074     | HIGH PRESSURE SWITCH (M1)            |
| 51  | 0130M00087     | CUT-OUT SWITCH, LOW PRESSURE         |
| 61  | 0162L00025     | FILTER DRIER                         |
| 71  | 0210L00470     | TXV WELDMENT (QTY 2)                 |
| 81  | ZP137KCETF7250 | Compressor 137000 400/3/60 (QTY 2)   |
| 91  | 0130M00074     | CUT-OUT SWITCH, HIGH PRESSURE (M1)   |
| 91  | 0130M00412     | CUT-OUT SWITCH, HIGH PRESSURE (M2)   |
| 101 | 0130M00087     | LOW PRESSURE SWITCH                  |
| 201 | 0162L00025     | FILTER DRIER                         |
| 211 | B1787000       | VALVE CORE (QTY 2)                   |
| 221 | 0130L00021     | CRANK CASE HEATER, 90W, 480V (QTY 2) |
| 241 | 0159L00046     | HARNESS-COMPRESSOR                   |
| 241 | 0159L00047     | HARNESS-COMPRESSOR                   |
| 261 | 0164M00018     | COMPRESSOR GROMMET (QTY 8)           |
| 271 | B1393740       | COMPRESSOR BOLT & SLEEVE (QTY 8)     |
| 301 | 0121L00723     | BASE RAIL CORNER BRACE (QTY 4)       |
| 311 | 0121L00616     | RAIL BRACE ANGLE, RIGHT (QTY 4)      |
| 321 | 0121L00617     | RAIL BRACE ANGLE, LEFT (QTY 4)       |
| NS  | 0163M00175     | CAP WITH O-RING (QTY 6)              |

**Expanded Model Nomenclature**

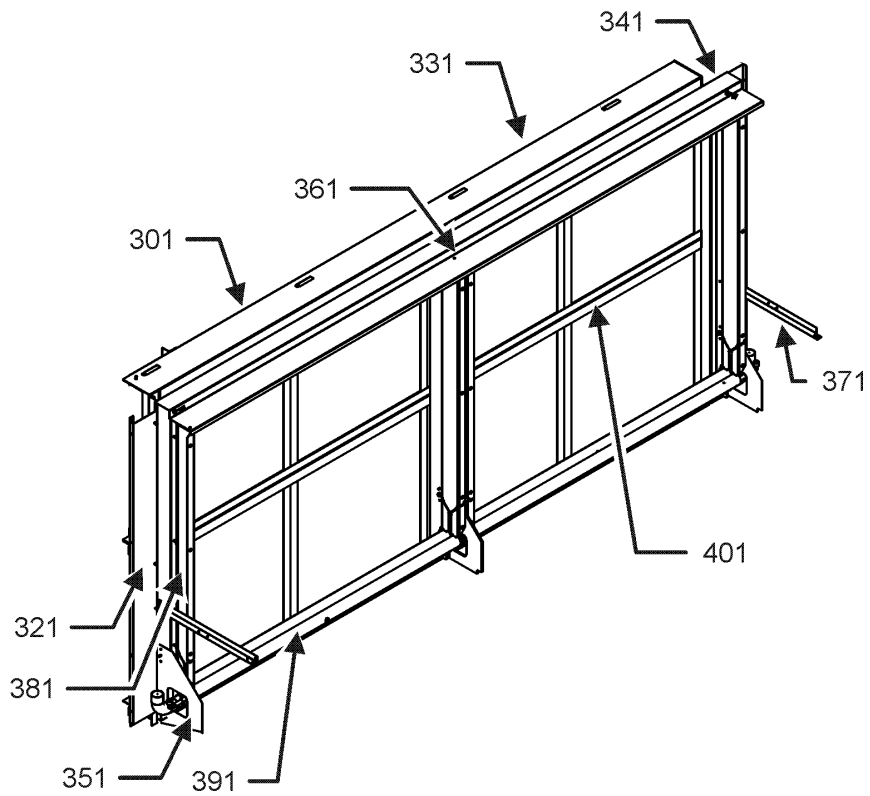
|                      |
|----------------------|
| M1 - DCC300XX6BXXXAA |
| M2 - DCC300XX6BXXXAB |

# CONDENSER AND EVAPORATOR ASSEMBLY

CONDENSER ASSEMBLY



EVAPORATOR ASSEMBLY



# CONDENSER AND EVAPORATOR ASSEMBLY

| Ref. Part No: No: | Description: | Ref. Part No: No: | Description:                      |
|-------------------|--------------|-------------------|-----------------------------------|
| <i>Image 1:</i>   |              |                   |                                   |
| 11                | 0121L00854   |                   | END COVER-CONDENSER (QTY 2)       |
| 21                | 0201L00281   |                   | CONDENSER COIL ASSY C1            |
| 31                | 0201L00282   |                   | CONDENSER COIL ASSY C2            |
| 41                | 0121L01154   |                   | BRACKET-CONDENSER END             |
| 51                | 0121L01156   |                   | BRACKET-CONDENSER END             |
| 71                | 0121L01153   |                   | BRACKET-COND/POST                 |
| 81                | 0121L01155   |                   | BRACKET-COND/POST                 |
| 101               | 0121L00901   |                   | COND COILS BRACE (QTY 2)          |
| 301               | 0202L00102   |                   | EVAP COIL ASSY C1                 |
| 321               | 0121L01086   |                   | EVAP BLOCKOFF, RIGHT              |
| 331               | 0202L00103   |                   | EVAP COIL ASSY C2                 |
| 341               | 0121L01085   |                   | EVAP BLOCKOFF, LEFT               |
| 351               | 0121L01133   |                   | END SUPPORT PLATE (QTY 2)         |
| 361               | 0121L01188   |                   | TOP FILTER RACK                   |
| 371               | 0121L01164   |                   | EVAP COIL SUPPORT BRACKET (QTY 2) |
| 381               | 0121L01184   |                   | ANGLE, FILTER RACK                |
| 391               | 0121L01187   |                   | BOTTOM FILTER RACK                |
| 401               | 0270L00614   |                   | CENTER FILTER RACK                |
| NS                | 0160L00136   |                   | Air Filter 20x20x2 (QTY 8)        |
| NS                | 0121L01178   |                   | ANGLED FILTER SLIDER (QTY 4)      |
| NS                | 0121L01139   |                   | BOTTOM BLOCKOFF, FILTER RACK      |
| NS                | 0121L01347   |                   | DRIP BLOCK OFF (QTY 2)            |
| NS                | 0121L01137   |                   | FILTER PULL (QTY 2)               |
| NS                | 0121L00632   |                   | FILTER SUPPORT ANGLE              |
| NS                | 0121L01089   |                   | MIDDLE EVAP BLOCKOFF, LEFT        |
| NS                | 0121L01088   |                   | MIDDLE EVAP BLOCKOFF, RIGHT       |

## Expanded Model Nomenclature

M1 - DCC300XXX6BXXXAA

M2 - DCC300XXX6BXXXAB



# BLOWER ASSEMBLY

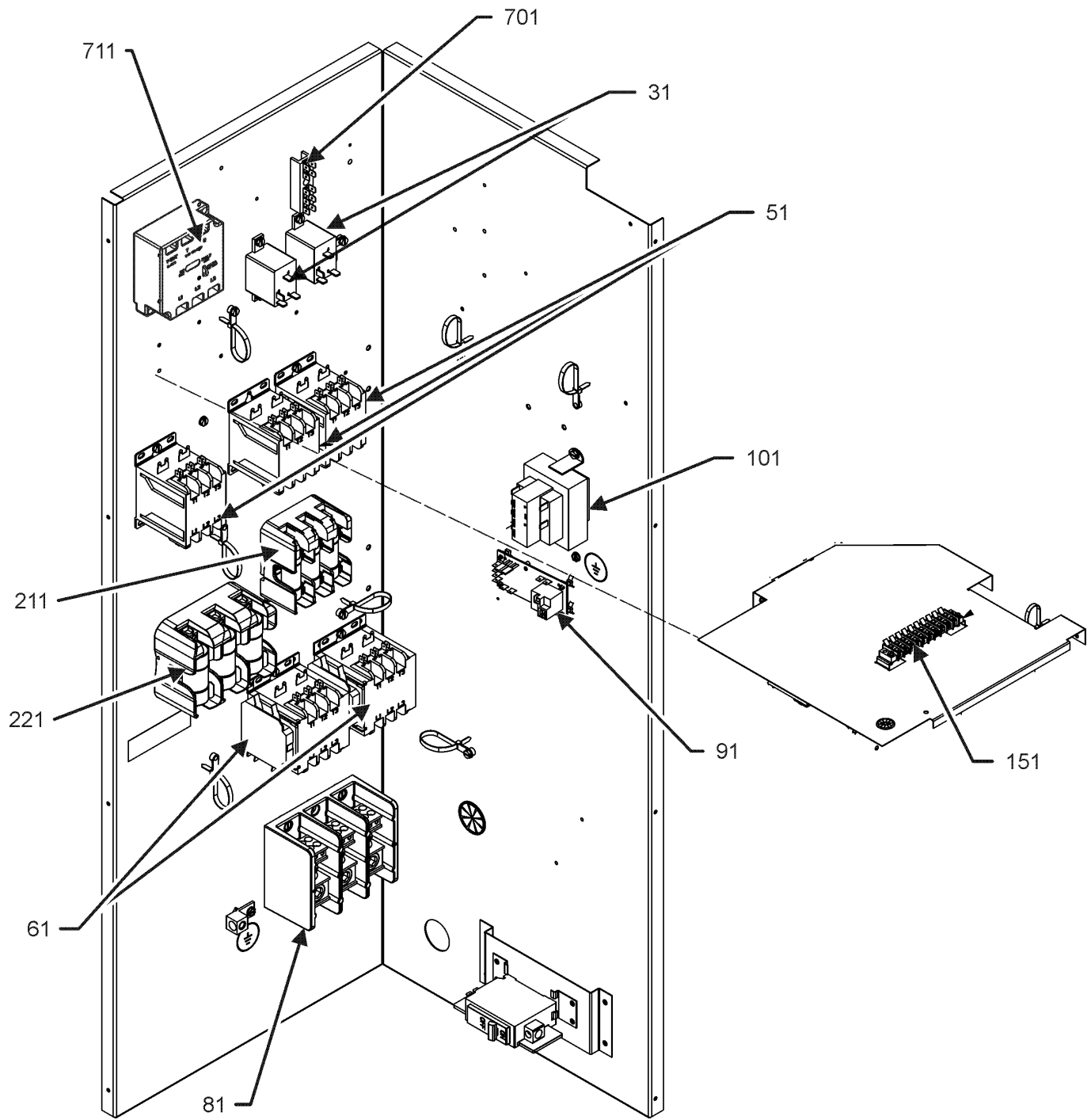
| <b>Ref. Part<br/>No: No:</b> | <b>Description:</b> | <b>Ref. Part<br/>No: No:</b> | <b>Description:</b>         |
|------------------------------|---------------------|------------------------------|-----------------------------|
| <i>Image 1:</i>              |                     |                              |                             |
| 11                           | 0131L00051          |                              | MOTOR, 7.5 HP BD 230,460V   |
| 31                           | 0163L00052          |                              | SHEAVE-VARIABLE PITCH       |
| 41                           | 0163L00141          |                              | SHEAVE, FIXED BK110H        |
| 51                           | 0164L00013          |                              | FAN BELT-NOTCHED            |
| 61                           | 0121L01430          |                              | MOTOR BASE PLATE            |
| 71                           | 0121L00482          |                              | BLOWER SIDE ANGLE (QTY 4)   |
| 81                           | 0121L00479          |                              | BLOWER RAIL (QTY 2)         |
| 91                           | 0121L01429          |                              | BRACKET, DRIVE SCREW        |
| 101                          | 0163M00351          |                              | BOLT, 3/8-16-6              |
| 241                          | 0271L00027          |                              | 150-15R BD 1.44 TWIN BLOWER |

## Expanded Model Nomenclature

M1 - DCC300XX6BXXXAA

M2 - DCC300XX6BXXXAB

# CONTROL BOX ASSEMBLY



# CONTROL BOX ASSEMBLY

| Ref. Part No:   | Part No:      | Description:                      | Ref. Part No: | Part No: | Description: |
|-----------------|---------------|-----------------------------------|---------------|----------|--------------|
| <i>Image 1:</i> |               |                                   |               |          |              |
| 31              | 0130M00242    | 24V RELAY (QTY 2)                 |               |          |              |
| 51              | CONT3P030024V | CONTACTOR 30 AMP, 3P, 24V (QTY 5) |               |          |              |
| 61              | 0130M00249    | AUXILLARY SWITCH (QTY 2)          |               |          |              |
| 81              | 0130M00042    | DISTRIB. BLOCK, 7.5-25 TON        |               |          |              |
| 91              | PCBFM103      | ELECTRONIC BLOWER TIME DELAY      |               |          |              |
| 101             | 0130M00081    | TRANSFORMER 380V, 75VA, RESETT    |               |          |              |
| 151             | 0130M00240    | TERMINAL BOARD                    |               |          |              |
| 211             | 0130M00246    | FUSE BLOCK                        |               |          |              |
| 221             | 0130M00247    | FUSE BLOCK                        |               |          |              |
| 701             | 802007090     | TERMINAL BOARD                    |               |          |              |
| 711             | 0130L00105    | PHASE MONITOR (M2)                |               |          |              |
| NS              | 0130L00101    | FUSE, J CLASS (QTY 3)             |               |          |              |
| NS              | 0130L00102    | FUSE, J CLASS (QTY 3)             |               |          |              |
| NS              | 0259L00212    | HARN, CH/LPS/HPS, C1              |               |          |              |
| NS              | 0259L00213    | HARN, CH/LPS/HPS, C2              |               |          |              |
| NS              | 0259L00207    | HARN, CNTL, BR_CCR, 1SPD EM       |               |          |              |
| NS              | 0259L00208    | HARN, CNTL, COOL                  |               |          |              |
| NS              | 0259L00202    | HARN, CNTL,CC_CM                  |               |          |              |
| NS              | 0259L00235    | HARN, IGN, SUB-ASSY 5             |               |          |              |
| NS              | 0259L00219    | HARN, PWR, CM PIGTAIL (QTY 4)     |               |          |              |
| NS              | 0259L00218    | HARN, PWR, CM, C1                 |               |          |              |
| NS              | 0259L00217    | HARN, PWR, CM, C2                 |               |          |              |
| NS              | 0259L00215    | HARN, PWR, CMC INTERCONN          |               |          |              |
| NS              | 0259L00196    | HARN, PWR, EM, 1 SPD              |               |          |              |
| NS              | 0259L00222    | HARN, PWR, FB TO EM_CM, 1 SPD     |               |          |              |
| NS              | 0259L00221    | HARN, PWR, PB TO CC1              |               |          |              |
| NS              | 0259L00220    | HARN, PWR, PB TO CC2              |               |          |              |
| NS              | 0259L00199    | HARN, PWR, PB TO FB               |               |          |              |
| NS              | 0259L00237    | HARN,CNTL,COOL,SUBASSY 1, HT P    |               |          |              |
| NS              | 0259L00238    | HARN,CNTL,COOL,SUBASSY 2,ECON     |               |          |              |
| NS              | 0130M00042    | POWER BLOCK                       |               |          |              |
| NS              | 0259L00427    | WIRE, HARNESS ASSY (M2)           |               |          |              |
| NS              | 0259L00428    | WIRE, HARNESS ASSY (M2)           |               |          |              |

## Expanded Model Nomenclature

M1 - DCC300XXX6BXXXAA

M2 - DCC300XXX6BXXXAB