

Commercial 7.5 Ton Belt Drive Package Cooling Unit

DCC0900164BAXBAC
DCC0900303BHxDAB
DCC0900304BVXAAC
DCC0900457BVXEAB
DCC090XXX3BHxDAB
DCC090XXX3BXDEAB
DCC090XXX3BXDXAB
DCC090XXX3BXXCAB
DCC090XXX3BXXDAB
DCC090XXX3BXXXAC
DCC090XXX4BBXXAC
DCC090XXX4BHxFAC
DCC090XXX4BVXXAC
DCC090XXX4BXXXAD



This manual is to be used by qualified technicians only.

This manual replaces RP-D1101G.

Important Information

Index

Functional Parts List	3
Illustration and Parts	4 - 13

Views shown are for parts illustrations only, not servicing procedures

Text Codes:

AR - As Required

NA - Not Available

NS - Not Shown

00000000 - See Note

QTY - Quantity Example (QTY 3) (If Quantity not shown, Quantity = 1)

M - Model Example (M1) (If M Code not shown, then part is used on all Models)

Expanded Model Nomenclature:

Example M1 - Model#1 M2 - Model#2 M3 - Model#3

Daikin Company, L.P. is not responsible for personal injury or property damage resulting from improper service. Review all service information before beginning repairs.

Warranty service must be performed by an authorized technician, using authorized factory parts. If service is required after the warranty expires, Daikin Company, L.P. also recommends contacting an authorized technician and using authorized factory parts.

Daikin Company, L.P. reserves the right to discontinue, or change at any time, specifications or designs without notice or without incurring obligations.

For assistance within the U.S.A. contact:

Equipment Support
Daikin North America, LLC
19001 Kermier Road
Waller, Texas 77484
855-770-5678-Telephone
713-863-2382-Facsimile

For assistance outside the U.S.A. contact:

International Division
Daikin North America, LLC
19001 Kermier Road
Waller, Texas 77484
713-861-2500-Telephone
713-863-2382-Facsimile

Functional Parts

Part

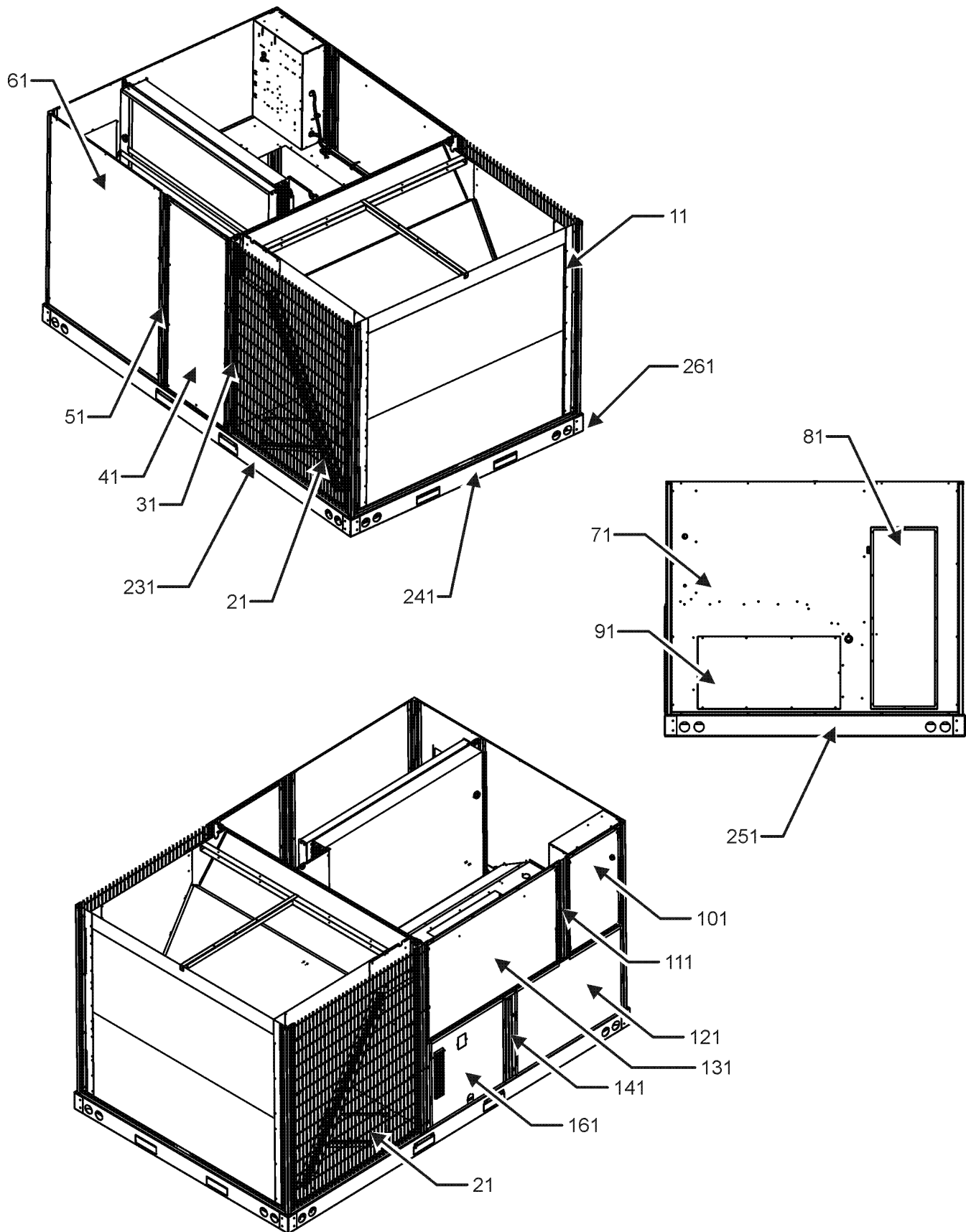
No: Description:

B3240007	BELT DRIVE MOTOR 1.5 HP (M1, M2, M3, M4, M5, M6, M7, M8, M9, M10, M11, M12, M13)
0131L00004	BELT DRIVE MOTOR 1.5 HP 575V (M14)
CAP030000440LA	CAPACITOR 3/440V (M14)
CAP050000370LA	CAPACITOR 5/370V (M1, M2, M3, M4, M5, M6, M12)
CAP075000370LA	CAPACITOR 7.5/370V (M7, M8, M9, M10, M11, M13)
ZP39K5ETF5130	COMPRESSOR 39000, 200/230/60/3 (M1, M2, M3, M4, M5, M6, M12)
ZP39K5ETFD130	COMPRESSOR 39000, 460/60/3 (M7, M8, M9, M10, M11, M13)
ZP39K5ETFE130	COMPRESSOR 39000, 575/60/3 (M14)
0131M00432	COND MOTOR 380/460/50/60 CYCLE (M7, M9, M10, M11, M13)
0131M00431	COND MOTOR 575V (M14)
CONT3P025024V	CONTACTOR 25 AMP, 3P, 24V (QTY 3)
0130M00030	CUT-OUT SWITCH, HIGH PRESSURE
0130M00031	CUT-OUT SWITCH, HIGH PRESSURE
0130L00002	CUT-OUT SWITCH, LOW PRESSURE
0130L00003	CUT-OUT SWITCH, LOW PRESSURE
PCBFM103	ELECTRONIC BLOWER TIME DELAY
0150G00001	FAN BLADE (QTY 2)
0131M00847	MOTOR, 1/4 HP, 1 SP, 6 PL (M1, M2, M3, M5, M6, M12)
0164L00000	NOTCHED FAN BELT AX51
0130M00038	TERMINAL BOARD (M1, M2, M3, M4, M5, M6, M8, M9, M10, M11, M12, M13, M14)
0130M00144	TRANSFORMER (M1, M2, M3, M4, M5, M6, M12)
0130M00145	TRANSFORMER 480V to 24V, 75VA (M7, M8, M9, M10, M11, M13)
0130M00148	TRANSFORMER 575V to 24V, 75VA (M14)

Expanded Model Nomenclature

M1 - DCC090XXX3BHXDAB
M2 - DCC090XXX3BXDEAB
M3 - DCC090XXX3BXDXAB
M4 - DCC090XXX3BXXCAB
M5 - DCC090XXX3BXXDAB
M6 - DCC090XXX3BXXXAC
M7 - DCC090XXX4BBXXAC
M8 - DCC090XXX4BHXFAC
M9 - DCC090XXX4BVXXAC
M10 - DCC090XXX4BXXXAD
M11 - DCC0900164BAXBAC
M12 - DCC0900303BHXDAB
M13 - DCC0900304BVXAAC
M14 - DCC0900457BVXEAB

Cabinet Assembly



Cabinet Assembly

Ref. Part No: No:	Description:	Ref. Part No: No:	Description:
-------------------	--------------	-------------------	--------------

Image 1:

11	0121L00065RFNG	CORNER POST (QTY 4)
11	0121L01407RFNG	CORNER POST (M2, M3)
21	0121L00511NG	LOUVERED SIDE PANEL (QTY 2)
31	0121L00738RFNG	ROLL FORM SIDE POST (M1, M4, M5, M6, M7, M8, M9, M10, M11, M12, M13, M14)
31	0121L01400RFNG	SIDE POST (M2, M3)
41	0121L00737NG	FILTER DOOR
51	0121L00739RFNG	FILTER DOOR POST (M1, M4, M5, M6, M7, M8, M9, M10, M11, M12, M13, M14)
51	0121L01432RFNG	FILTER DOOR POST (M2, M3)
61	0121L00510NG	ECONOMIZER DOOR (M1, M2, M3, M4, M5, M6, M7, M8, M10, M12)
71	0121L01364NG	DUCT PANEL (M2, M3, M4, M5, M6, M7, M9, M10, M11, M14)
71	0121L01365NG	DUCT PANEL (M1, M8, M12)
71	0121L01366NG	DUCT PANEL (M8, M13)
81	0121L00082NG	RETURN DUCT COVER
91	0121L00099NG	SUPPLY DUCT COVER
101	0121L00974NG	CONTROL DOOR
111	0121L02517RFNG	RF, PAINTED CNTL POST HINGED (M2, M3)
111	0121L02303RFNG	RF, PAINTED CONTROL POST (M1, M4, M5, M6, M7, M8, M9, M10, M11, M12, M13, M14)
121	0121L00767NG	ELECTRIC HEAT DOOR
131	0121L00763NG	BLOWER DOOR
141	0121L00765RFNG	BURNER BOX POST
161	0121L00828NG	BURNER AREA DOOR
231	0121L01099RF	RAIL, BASE SIDES RF (QTY 2)
241	0121L00834RF	RAIL-BASE COND END
251	0121L00071RF	RAIL, BASE DUCT END
261	0121G00301	RAIL CORNER BRACKET (QTY 4)
NS	0121L00727	ECONOMIZER COVER (M9, M13, M14)
NS	0121L01310	ECONOMIZER COVER (M11)
NS	0164L00009	GASKET-RUBBER, CPOST (QTY 3)
NS	0164L00011	GASKET-RUBBER, SIDE POST (QTY 5)

Expanded Model Nomenclature

M1 - DCC090XXX3BHxDAB
M2 - DCC090XXX3BXDEAB
M3 - DCC090XXX3BXDXAB
M4 - DCC090XXX3BXXCAB
M5 - DCC090XXX3BXXDAB
M6 - DCC090XXX3BXXXAC
M7 - DCC090XXX4BBXXAC
M8 - DCC090XXX4BHXFAC
M9 - DCC090XXX4BVXXAC
M10 - DCC090XXX4BXXXAD
M11 - DCC0900164BAXBAC
M12 - DCC0900303BHxDAB
M13 - DCC0900304BVXAAC
M14 - DCC0900457BVXEAB

Top Panel and Tubing Assembly

IMAGE 1

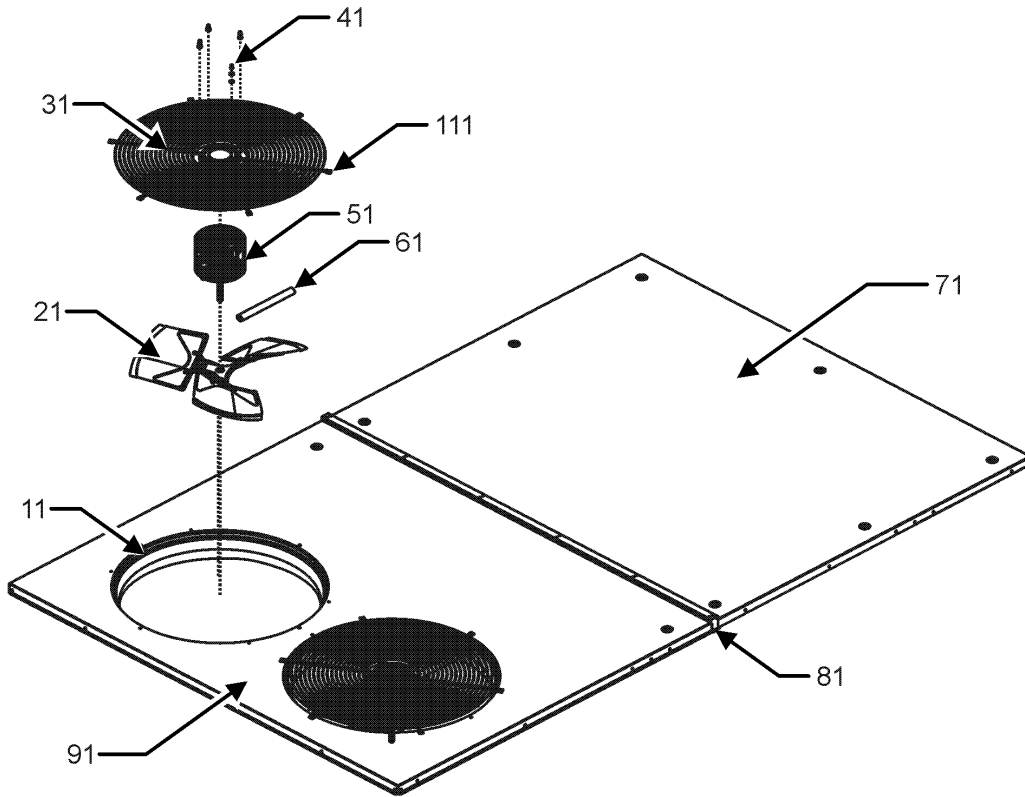
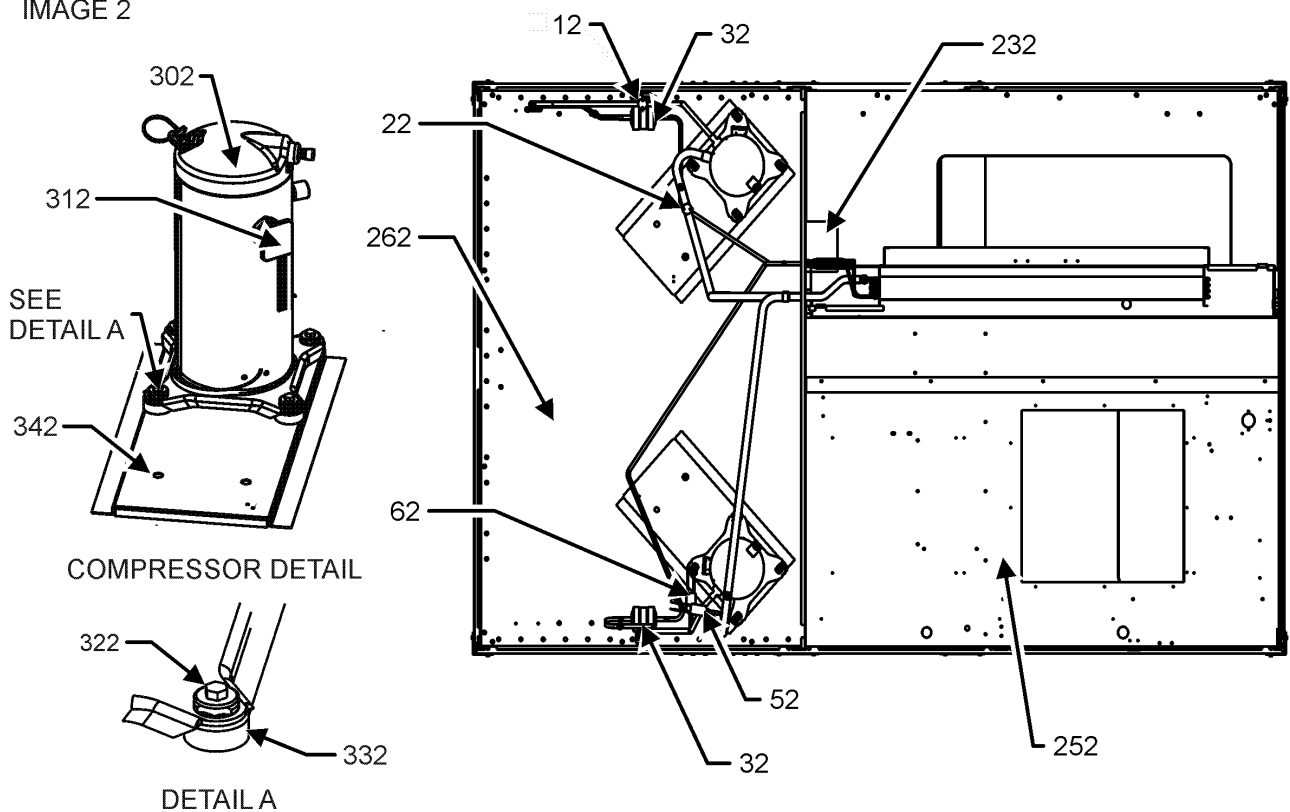


IMAGE 2

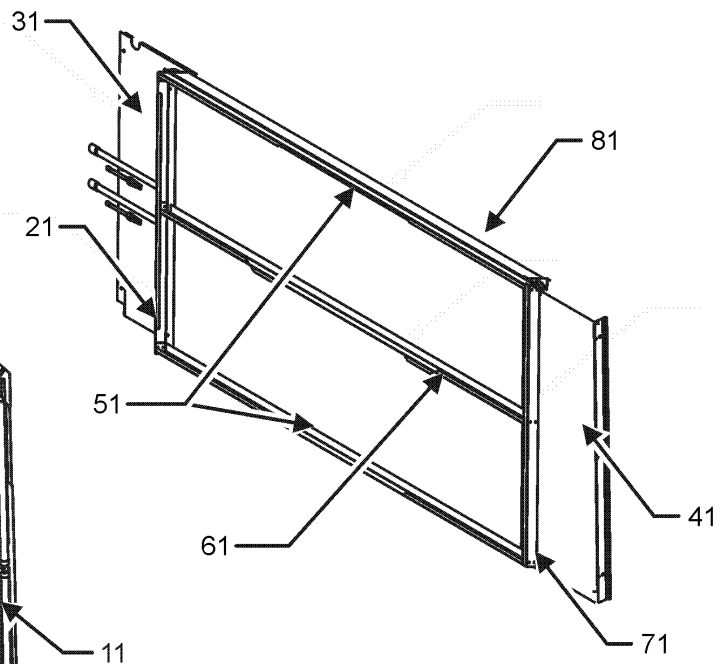
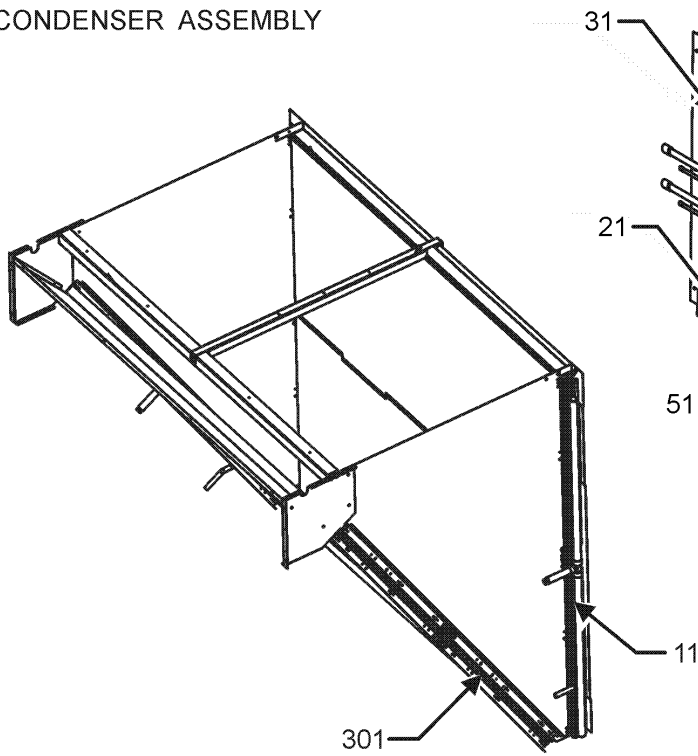


Top Panel and Tubing Assembly

Ref. Part No: No:	Description:	Ref. Part No: No:	Description:
Image 1:		Expanded Model Nomenclature	
11	0161L00000 VENTURI RING 22" (QTY 2)	M1	DCC090XXX3BHxDAB
21	0150G00001 FAN BLADE (QTY 2)	M2	DCC090XXX3BXDEAB
31	0152G00000 FAN GRILLE, RAISED (QTY 2)	M3	DCC090XXX3BXDXAB
41	0163M00006P ACORN NUT 5/16 HEX BLACK (QTY 8)	M4	DCC090XXX3BXXCAB
51	0131M00432 COND MOTOR 380/460/50/60 CYCLE (M7, M9, M10, M11, M13)	M5	DCC090XXX3BXXDAB
51	0131M00431 COND MOTOR 575V (M14)	M6	DCC090XXX3BXXXAC
51	0131M00847 MOTOR, 1/4 HP, 1 SP, 6 PL (M1, M2, M3, M5, M6, M12)	M7	DCC090XXX4BXXAC
51	0131L00061 MOTOR, 1/4 HP, 1SP, 6PL (M4)	M8	DCC090XXX4BHXFAC
51	0131L00062 MOTOR, COND, 1/4 HP, 460V (M8)	M9	DCC090XXX4BVXXAC
61	0163M00386 CONDUIT-FLEXIBLE (QTY 2)	M10	DCC090XXX4BXXAD
71	0121L00497NG TOP INDOOR	M11	DCC0900164BAXBAC
81	20455902 SPLICE GASKET .50 X .25 (QTY 5)	M12	DCC0900303BHxDAB
91	0121L01105NG TOP OUTDOOR	M13	DCC0900304BVXAAC
111	0163M00005P WASHER, BLACK (.50 OD .218ID) (QTY 8)	M14	DCC0900457BVXEAB
NS	0159L00066 COND MOTOR HARNESS 230V		
NS	0159L00067 COND MOTOR HARNESS 460V		
NS	0259L00026 COND MOTOR HARNESS 460V (M7, M8, M9, M10, M11, M13)		
NS	0259L00028 COND MOTOR HARNESS 460V (M7, M8, M9, M10, M11, M13)		
NS	0259L00511 HARNESS COND MOTOR (M1, M2, M3, M4, M5, M6, M12, M14)		
NS	0259L00512 HARNESS COND MOTOR (M1, M2, M3, M4, M5, M6, M12, M14)		
NS	0163M00004 SCREW #10X3/4", BLACK (QTY 20)		
Image 2:			
12	0130M00031 CUT-OUT SWITCH, HIGH PRESSURE		
22	0130L00003 CUT-OUT SWITCH, LOW PRESSURE		
32	B1219204 BI-FLOW FILTER DRIER		
52	0130L00002 CUT-OUT SWITCH, LOW PRESSURE		
62	0130M00030 CUT-OUT SWITCH, HIGH PRESSURE		
232	0121L00359 SHIELD-EVAPORATOR DRIP		
252	0121L00944 BASE PAN - INDOOR		
262	0121L02129 BASE PAN - OUTDOOR		
302	ZP39K5ETF5130 COMPRESSOR 39000, 200/230/60/3 (M1, M2, M3, M4, M5, M6, M12)		
302	ZP39K5ETFD130 COMPRESSOR 39000, 460/60/3 (M7, M8, M9, M10, M11, M13)		
302	ZP39K5ETFE130 COMPRESSOR 39000, 575/60/3 (M14)		
312	0159L00066 COMPRESSOR SCROLL HARNESS		
312	0159L00067 COMPRESSOR SCROLL HARNESS		
322	M0221641 TF SHOULDER SCREW (QTY 8)		
332	B1339533 COMPRESSOR GROMMET (QTY 8)		
342	0121L02128 COMPRESSOR MOUNTING PLATE (QTY 2)		
NS	B1373315 ACCESS FITTING (QTY 4)		
NS	0141L00006X BOARD FORK (QTY 2)		
NS	0121L00055 BRACKET-FORK BOARD (QTY 4)		
NS	0163M00175 CAP WITH O-RING (QTY 4)		

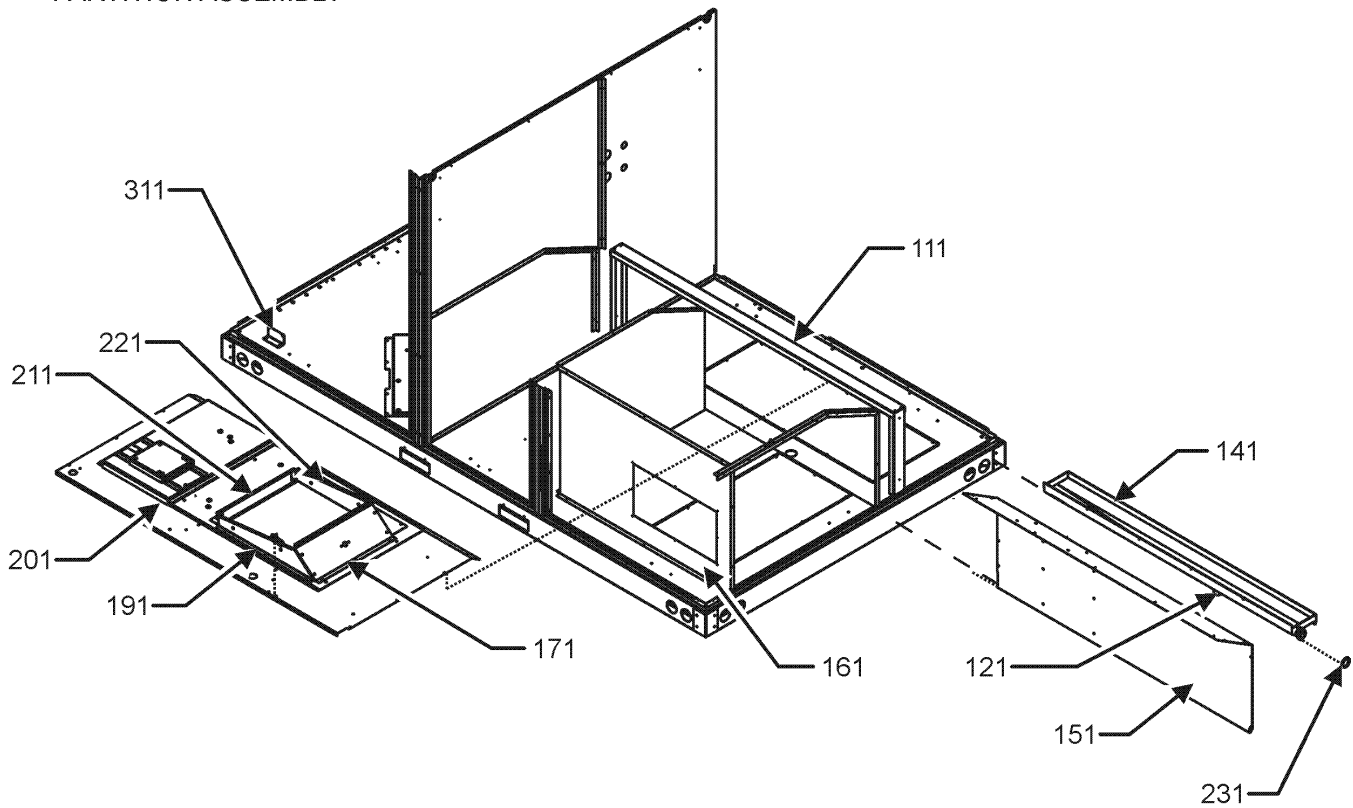
Partition, Evaporator and Condenser Assy

CONDENSER ASSEMBLY



EVAPORATOR ASSEMBLY

PARTITION ASSEMBLY



Partition, Evaporator and Condenser Assy

Ref. Part No: No:	Description:	Ref. Part No: No:	Description:
-------------------	--------------	-------------------	--------------

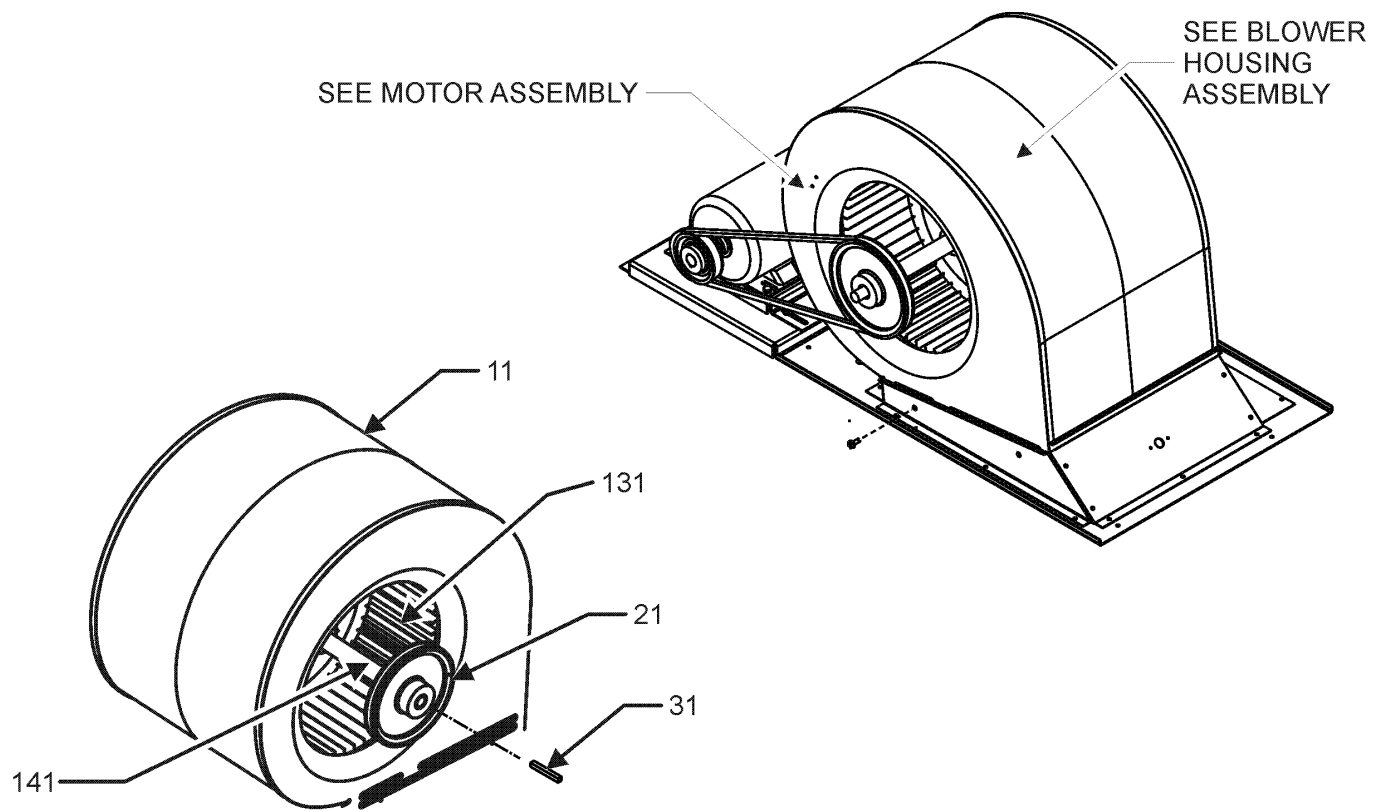
Image 1:

11	0201L00209	COND COIL ASSY, 5MM
21	0121L00357	FILTER ANGLE-VERTICAL (RETURN SIDE)
31	0121L00210	EVAP EXTENSION-RETURN SIDE
41	0121L00844	EVAP EXTENSION-HAIRPIN SIDE
51	0121L00932	FILTER ANGLE-HORIZONTAL (QTY 2)
61	0121L01255	ANGLE-FILTER CENTER
71	0121L00358	FILTER ANGLE-VERTICAL (HAIRPIN SIDE)
81	0202L00091	TUBING ASSY, EVAP COIL
111	0121L00508	DRAIN PAN SUPPORT
121	0163L00071	PLUG, DRAIN
141	0161L00002	DRAIN PAN
151	0121L00374	DECK SIDE CHANNEL
161	0121L00365	ELECTRIC HEAT PANEL
171	0121L00090	BLOWER TRANSITION, RH END
191	0121L00092	BLOWER TRANSITION, FRONT
201	0121L02500	BLOWER DECK
211	0121L00097	BLOWER TRANSITION, LH END
221	0121L00145	BLOWER TRANSITION, BACK
231	0154L00009	DRAIN PAN GASKET
301	0201L00210	COND COIL ASSY, 5MM
311	0121L00369	BRACE-CONDENSER (QTY 2)
NS	0160L00174	AIR FILTER 16 X 20 X 2 (QTY 4)
NS	0121L01398	DECK, SUPPORT BLOWER (M2, M3)
NS	0121L01402	DECK, SUPPORT CONTROL (M2, M3)
NS	0121L00321	SMOKE DETECTOR COVER (QTY 2)

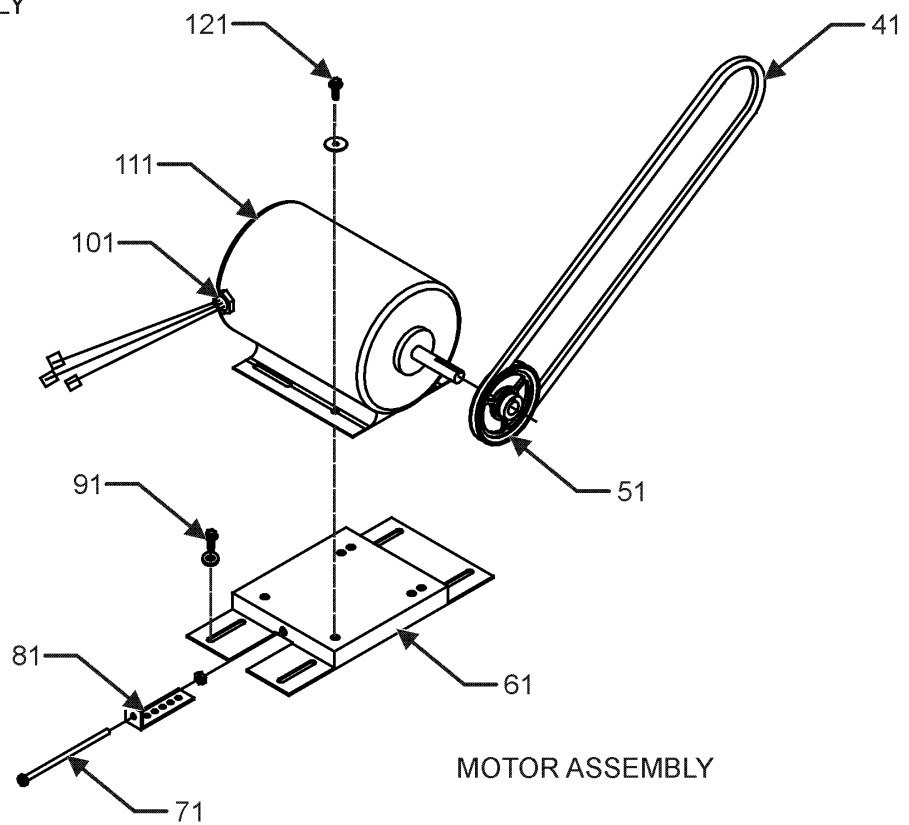
Expanded Model Nomenclature

- | |
|------------------------|
| M1 - DCC090XXX3BHxDAB |
| M2 - DCC090XXX3BXDEAB |
| M3 - DCC090XXX3BXdXAB |
| M4 - DCC090XXX3BXXCAB |
| M5 - DCC090XXX3BXXDAB |
| M6 - DCC090XXX3BXXXAC |
| M7 - DCC090XXX4BBXXAC |
| M8 - DCC090XXX4BHxFAC |
| M9 - DCC090XXX4BVXXAC |
| M10 - DCC090XXX4BXXXAD |
| M11 - DCC0900164BAXBAC |
| M12 - DCC0900303BHxDAB |
| M13 - DCC0900304BVXAAC |
| M14 - DCC0900457BVXEAB |

Blower and Control Box Assembly



BLOWER HOUSING ASSEMBLY



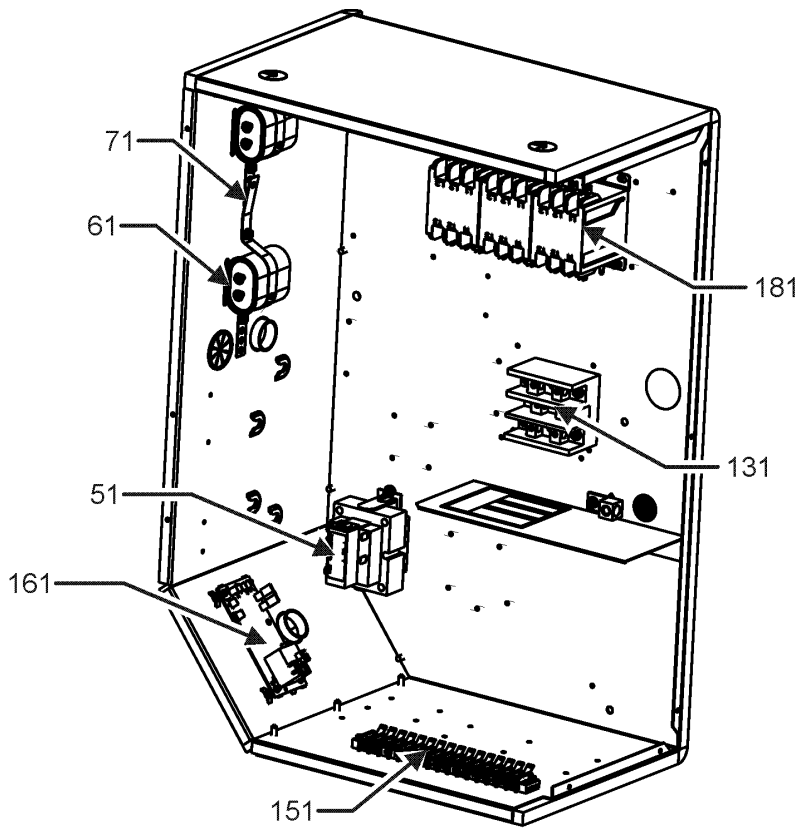
Blower and Control Box Assembly

Ref. Part No:	No:	Description:	Ref. Part No:	No:	Description:
Image 1:					
11	04-01525	BLOWER HOUSING			
21	0163L00134	SHEAVE, FIXED AK74H			
31	B1398604	STEEL KEY (000158812) 2.0"			
41	0164L00000	NOTCHED FAN BELT AX51			
51	0163L00024	VARIABLE PITCH SHEAVE 1VL40 X 5/8" (M14)			
51	0163L00012	VARIABLE PITCH SHEAVE VL40 (M1, M2, M3, M4, M5, M6, M7, M8, M9, M10, M11, M12, M13)			
61	0121L01504	MOTOR BASE			
71	0163M00045	BOLT 1/4-20 X 4"			
81	3225000F	BELT TIGHTENER ANGLE			
91	B1446707	SCREW 5/16-18 X 1" (QTY 4)			
101	B1393726	ELECT. CONNECTING BUSHING			
111	B3240007	BELT DRIVE MOTOR 1.5 HP (M1, M2, M3, M4, M5, M6, M7, M8, M9, M10, M11, M12, M13)			
111	0131L00004	BELT DRIVE MOTOR 1.5 HP 575V (M14)			
121	B1393738	BOLT 1/4-20 X 3/4" (QTY 4)			
131	03-77429	BLOWER WHEEL			
141	04-11525	BLOWER SHAFT			
NS	04-02196	BEARING & FRAME ASSY			
NS	0259L00008	MOTOR HARNESS-BELT DRIVE			

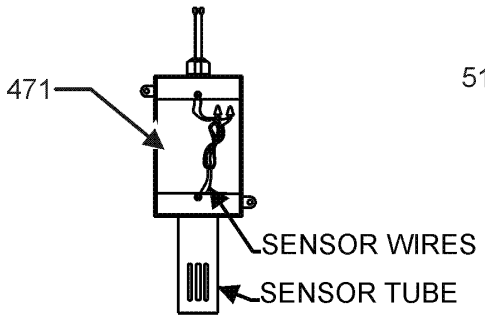
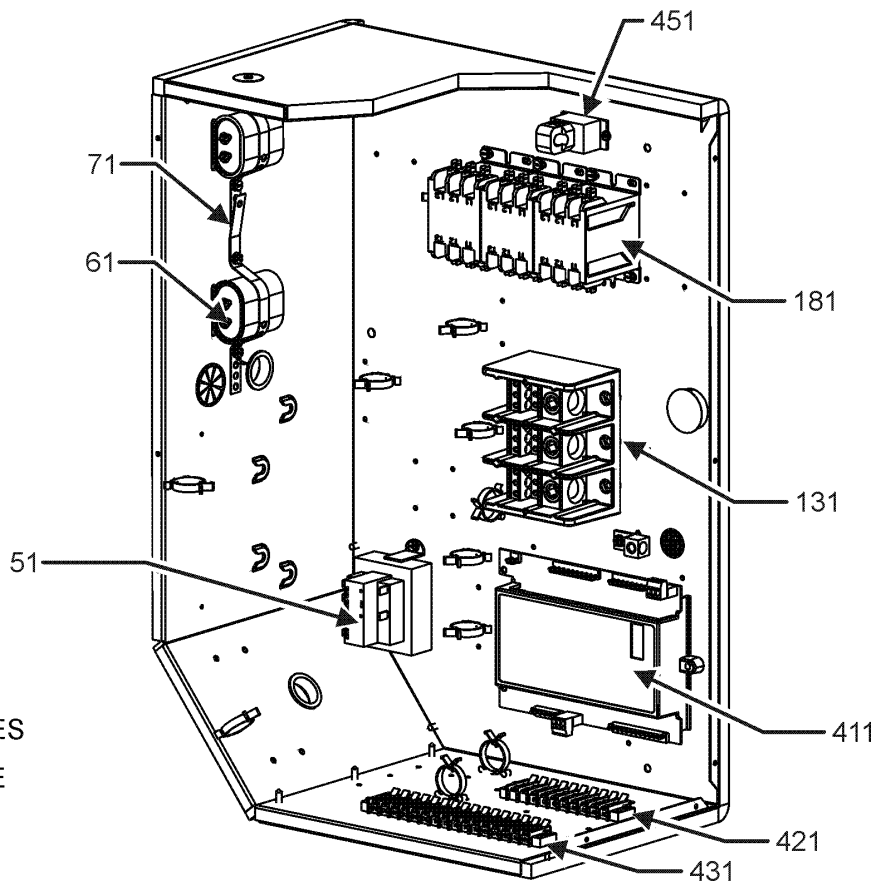
Expanded Model Nomenclature

M1 - DCC090XXX3BHxDAB
M2 - DCC090XXX3BXDEAB
M3 - DCC090XXX3BxDXAB
M4 - DCC090XXX3BXXCAB
M5 - DCC090XXX3BXXDAB
M6 - DCC090XXX3BXXXAC
M7 - DCC090XXX4BBXXAC
M8 - DCC090XXX4BHxFAC
M9 - DCC090XXX4BVXXAC
M10 - DCC090XXX4BXXXAD
M11 - DCC0900164BAXBAC
M12 - DCC0900303BHxDAB
M13 - DCC0900304BVXAAC
M14 - DCC0900457BVXEAB

Accessory Part List



CONTROL BOX
FOR MODELS
WITH DDC CONTROL



FRONT VIEW

Accessory Part List

Ref. Part No:	No:	Description:	Ref. Part No:	No:	Description:
<i>Image 1:</i>			Expanded Model Nomenclature		
51	0130M00144	TRANSFORMER (M1, M2, M3, M4, M5, M6, M12)	M1	-	DCC090XXX3BHxDAB
51	0130M00145	TRANSFORMER 480V to 24V, 75VA (M7, M8, M9, M10, M11, M13)	M2	-	DCC090XXX3BXDEAB
51	0130M00148	TRANSFORMER 575V to 24V, 75VA (M14)	M3	-	DCC090XXX3BXDXAB
61	CAP030000440LA	CAPACITOR 3/440V (M14)	M4	-	DCC090XXX3BXXCAB
61	CAP050000370LA	CAPACITOR 5/370V (M1, M2, M3, M4, M5, M6, M12)	M5	-	DCC090XXX3BXXDAB
61	CAP075000370LA	CAPACITOR 7.5/370V (M7, M8, M9, M10, M11, M13)	M6	-	DCC090XXX3BXXXAC
71	20520901	CAPACITOR STRAP (QTY 2)	M7	-	DCC090XXX4BXXAC
131	0130M00042	BLOCK, POWER	M8	-	DCC090XXX4BHXFAC
151	0130M00038	TERMINAL BOARD (M1, M2, M3, M4, M5, M6, M8, M9, M10, M11, M12, M13, M14)	M9	-	DCC090XXX4BVXXAC
161	PCBFM103	ELECTRONIC BLOWER TIME DELAY	M10	-	DCC090XXX4BXXAD
181	CONT3P025024V	CONTACTOR 25 AMP, 3P, 24V (QTY 3)	M11	-	DCC0900164BAXBAC
411	PCBCG100	DDC Controller (M7)	M12	-	DCC0900303BHxDAB
421	0130M00274	TERMINAL BOARD (M7)	M13	-	DCC0900304BVXAAC
431	0130M00275	TERMINAL BOARD (M7)	M14	-	DCC0900457BVXEAB
451	0259L00368	CURRENT SWITCH WITH TERMS (M7)			
471	0130L00112	Duct Temp Sensor (M7)			
NS	0259L00386	ANALOG OUTPUT, DDC (M7)			
NS	0259L00165	ECONOMIZER HARNESS			
NS	0259L00401	HARN, BINARY INPUT, DDC (M7)			
NS	0259L00401	HARN, BINARY INPUT, DDC (M7)			
NS	0259L00382	HARN, CNTL PWR, DDC (M7)			
NS	0259L00382	HARN, CNTL PWR, DDC (M7)			
NS	0259L00385	HARN, CNTL, HEAT PLUG INTERCON (M7)			
NS	0259L00399	HARN, PWR XFMR CNTL (M7)			
NS	0259L00399	HARN, PWR XFMR CNTL (M7)			
NS	0259L00408	HARN, RELAY OUTPUT, DDC (M7)			
NS	0259L00496	HARNESS, NON POW, CONV, OUT (M8, M13)			
NS	0259L00092	HARNESS-SMOKE DETECTOR SENSOR (M1, M5, M12)			
NS	0259L00032	LCM HARNESS, ELECTRIC HEAT			
NS	0259L00032	LCM HARNESS, ELECTRIC HEAT			
NS	0130L00108	OD Air Temp Sensor (M7)			
NS	0130L00107	ROOM SENSOR (M7)			
NS	0259L00502	WIRE HARNESS			
NS	0259L00148	WIRE HARNESS ASSY			
NS	0259L00158	WIRE HARNESS ASSY			
NS	0259L00090	WIRE HARNESS-SMOKE DETECTOR (M1, M2, M5, M12, M14)			