

Commercial 7.5 Ton 2-Speed Package Cooling Unit

DCC0900163VHDAAA
DCC0900163VADXAA
DCC0900163VFDXAA
DCC0900163VHBAAA
DCC0900163VHDBAA
DCC0900163VHDXAA
DCC0900163VHMLAA
DCC0900163VHXMAA
DCC0900163VWBEAA
DCC0900163VWXAAA
DCC0900163VXDPA
DCC0900167VHDXAA
DCC0900304VWXAAA
DCC0900304VWXXAA
DCC0900304VXXXAA
DCC0900307VHDXAA
DCC090XXX3VAXXAA
DCC090XXX3VVXMAA
DCC090XXX3VXDXAA
DCC090XXX3VXXVAA
DCC090XXX3VXXXAA
DCC090XXX4VVXZAA
DCC090XXX4VXXMYAA
DCC090XXX4VXXXAA
DCC090XXX7VXXXAA



This manual is to be used by qualified technicians only.

This manual replaces RP-D1047K.

Important Information

Index

Functional Parts List	3
Illustration and Parts	4 - 15

Views shown are for parts illustrations only, not servicing procedures

Text Codes:

AR - As Required

NA - Not Available

NS - Not Shown

00000000 - See Note

QTY - Quantity Example (QTY 3) (If Quantity not shown, Quantity = 1)

M - Model Example (M1) (If M Code not shown, then part is used on all Models)

Expanded Model Nomenclature:

Example M1 - Model#1 M2 - Model#2 M3 - Model#3

Daikin Company, L.P. is not responsible for personal injury or property damage resulting from improper service. Review all service information before beginning repairs.

Warranty service must be performed by an authorized technician, using authorized factory parts. If service is required after the warranty expires, Daikin Company, L.P. also recommends contacting an authorized technician and using authorized factory parts.

Daikin Company, L.P. reserves the right to discontinue, or change at any time, specifications or designs without notice or without incurring obligations.

For assistance within the U.S.A. contact:

Equipment Support
Daikin North America, LLC
19001 Kermier Road
Waller, Texas 77484
855-770-5678-Telephone
713-863-2382-Facsimile

For assistance outside the U.S.A. contact:

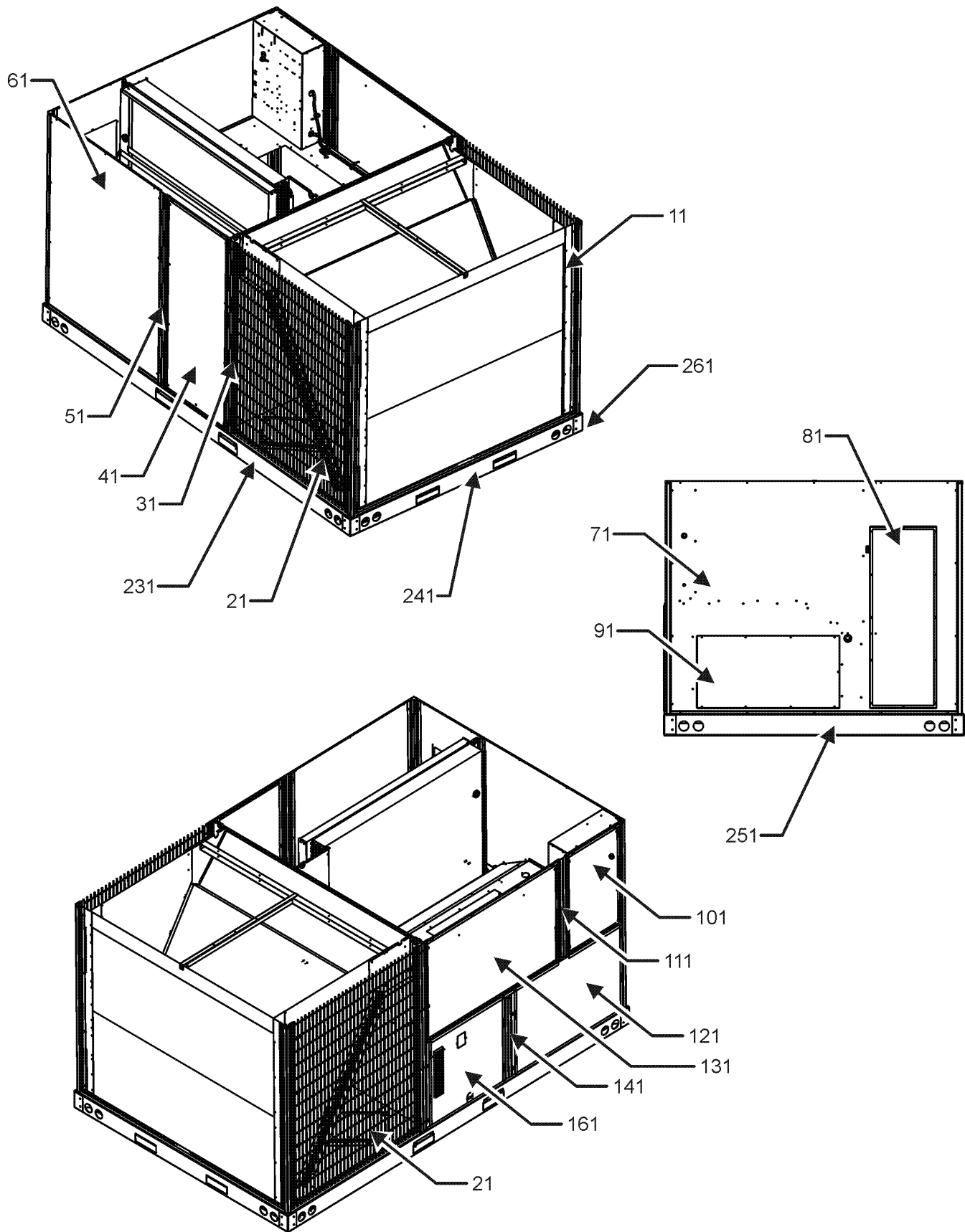
International Division
Daikin North America, LLC
19001 Kermier Road
Waller, Texas 77484
713-861-2500-Telephone
713-863-2382-Facsimile

Functional Parts

Part No: **Description:**

Part No:	Description:	Expanded Model Nomenclature
03-77429	BLOWER WHEEL	M1 - DCC090XXX3VAXXAA
CAP075000440LA	CAP 7.5 MFD/440V/OVAL (M7)	M2 - DCC090XXX3VVXMAA
CAP050000370LA	CAP, 5 MFD/370V/OVAL (M1, M2, M3, M4, M5, M10, M11, M12, M13, M14, M15, M16, M17, M18, M19, M20)	M3 - DCC090XXX3VVDXAA
CAP075000370LA	CAP, 7.5 MFD/370V/OVAL (M6, M8, M22, M23, M24)	M4 - DCC090XXX3VXXVAA
CAP030000440LA	CAPACITOR (M9, M21, M25)	M5 - DCC090XXX3VXXAA
ZP39K5ETF5130	COMPRESSOR 39000, 200/230/60/3 (M1, M2, M3, M4, M5, M10, M11, M12, M13, M14, M15, M16, M17, M18, M19, M20)	M6 - DCC090XXX4VVXZAA
ZP39K5ETFD130	COMPRESSOR 39000, 460/60/3 (M6, M7, M8, M22, M23, M24)	M7 - DCC090XXX4VXMYAA
ZP39K5ETFE130	COMPRESSOR 39000, 575/60/3 (M9, M21, M25)	M8 - DCC090XXX4VXXXAA
0131M00431	COND MOTOR 575V (M9, M21, M25)	M9 - DCC090XXX7VXXXAA
CONT3P025024V	CONTACTOR 25 AMP, 3P, 24V (QTY 4)	M10 - DCC0900163VADXAA
0130M00031	CUT-OUT SWITCH, HIGH PRESSURE	M11 - DCC0900163VFDXAA
0130M00030	CUT-OUT SWITCH, HIGH PRESSURE	M12 - DCC0900163VHBAAA
0130L00002	CUT-OUT SWITCH, LOW PRESSURE	M13 - DCC0900163VHDAAA
0130L00003	CUT-OUT SWITCH, LOW PRESSURE	M14 - DCC0900163VHDBAA
0150G00001	FAN BLADE (QTY 2)	M15 - DCC0900163VHDXAA
0131L00041	MOTOR 2 HP BELT DRIVE 208-230V (M1, M2, M3, M4, M5, M10, M11, M12, M13, M14, M15, M16, M17, M18, M19, M20)	M16 - DCC0900163VHMLAA
0131L00043	MOTOR 2HP BELT DRIVE 460V (M6, M7, M8, M22, M23, M24)	M17 - DCC0900163VHXMAA
0131L00042	MOTOR 2HP BELT DRIVE 575V (M9, M21, M25)	M18 - DCC0900163VWBEAA
0131M00847	MOTOR, 1/4 HP, 1 SP, 6 PL (M1, M3, M5, M10, M11, M12, M13, M14, M15, M17, M18, M19, M20)	M19 - DCC0900163VWXAAA
0131L00061	MOTOR, 1/4 HP, 1SP, 6PL (M2, M4, M16)	M20 - DCC0900163VXDPAA
0131M00857	MOTOR, 380/460 50/60 HZ (M6, M8, M22, M23, M24)	M21 - DCC0900167VHDXAA
0131L00062	MOTOR, COND, 1/4 HP, 460V (M7)	M22 - DCC0900304VWXAAA
0164L00000	NOTCHED FAN BELT AX51	M23 - DCC0900304VWXXAA
PCBFM103	PCB, TIME DELAY, EBTDR	M24 - DCC0900304VXXXAA
10135604	RELAY (QTY 2)	M25 - DCC0900307VHDXAA
0130M00242	RELAY, 24V (QTY 2)	
0130M00038	TERMINAL STRIP	
0130M00594	TRANSFORMER (M1, M2, M3, M4, M5, M10, M11, M12, M13, M14, M15, M16, M17, M18, M19, M20)	
0130M00595	TRANSFORMER, 75VA, 480V TO 24V (M6, M7, M8, M22, M23, M24)	
0130M00598	TRANSFORMER, 75VA, 575V TO 24V (M9, M21, M25)	

Cabinet Assembly



Cabinet Assembly

Ref. Part

No: No: Description:

Ref. Part

No: No: Description:

Image 1:

11	0121L00065RFNG	CORNER POST (QTY 4)
11	0121L01407RFNG	CORNER POST (M3, M7, M10, M11, M13, M14, M15, M16, M20, M21, M25)
21	0121L00511NG	LOUVERED SIDE PANEL (QTY 2)
31	0121L00738RFNG	ROLL FORM SIDE POST (M1, M2, M4, M5, M6, M8, M9, M12, M17, M18, M19, M22, M23, M24)
31	0121L01400RFNG	SIDE POST (M3, M7, M10, M11, M13, M14, M15, M16, M20, M21, M25)
41	0121L00737NG	FILTER DOOR
51	0121L00739RFNG	FILTER DOOR POST (M1, M2, M4, M5, M6, M8, M9, M12, M17, M18, M19, M22, M23, M24)
51	0121L01432RFNG	FILTER DOOR POST (M3, M7, M10, M11, M13, M14, M15, M16, M20, M21, M25)
61	0121L00510NG	ECONOMIZER DOOR (M3, M4, M5, M7, M8, M9, M12, M13, M14, M15, M16, M17, M20, M21, M24, M25)
71	0121L01364NG	DUCT PANEL (M1, M2, M3, M4, M5, M6, M7, M8, M9, M10, M11, M20, M24)
71	0121L01365NG	DUCT PANEL (M12, M13, M14, M15, M16, M17, M18, M19, M21, M22, M23, M25)
81	0121L00082NG	RETURN DUCT COVER
91	0121L00099NG	SUPPLY DUCT COVER
101	0121L00974NG	CONTROL DOOR
111	0121L02303RFNG	PAINTED CONTROL POST (M1, M2, M4, M5, M6, M8, M9, M12, M17, M18, M19, M22, M23, M24)
111	0121L02517RFNG	RF, PAINTED CNTL POST HINGED (M3, M7, M10, M11, M13, M14, M15, M16, M20, M21, M25)
121	0121L00767NG	ELECTRIC HEAT DOOR
131	0121L00763NG	BLOWER DOOR
141	0121L00765RFNG	BURNER BOX POST
161	0121L00828NG	BURNER AREA DOOR
231	0121L01099RF	RAIL, BASE SIDES RF (QTY 2)
241	0121L00834RF	RAIL-BASE COND END
251	0121L00071RF	RAIL, BASE DUCT END
261	0121G00301	RAIL CORNER BRACKET (QTY 4)
NS	0121L00055	BRACKET-FORK BOARD (QTY 4)
NS	0121L00727	ECONOMIZER COVER (M2, M6, M18, M19, M22, M23)
NS	0121L01310	ECONOMIZER COVER (M1, M10, M11)
NS	0141L00006X	FORK BOARD (QTY 2)
NS	0164L00009	GASKET-RUBBER, CPOST (QTY 3)
NS	0164L00011	GASKET-RUBBER, SIDE POST (QTY 5)

Expanded Model Nomenclature

M1 - DCC090XXX3VAXXAA
M2 - DCC090XXX3VVXMAA
M3 - DCC090XXX3VXDAAA
M4 - DCC090XXX3VXXVAA
M5 - DCC090XXX3VXXXAA
M6 - DCC090XXX4VVXZAA
M7 - DCC090XXX4VXXMYAA
M8 - DCC090XXX4VXXXAA
M9 - DCC090XXX7VXXXAA
M10 - DCC0900163VADXAA
M11 - DCC0900163VFDXAA
M12 - DCC0900163VHBAAA
M13 - DCC0900163VHDAAA
M14 - DCC0900163VHDBAA
M15 - DCC0900163VHDXAA
M16 - DCC0900163VHMLAA
M17 - DCC0900163VHXMAA
M18 - DCC0900163VWBAAA
M19 - DCC0900163VWXAAX
M20 - DCC0900163VXDAAA
M21 - DCC0900167VHDAAA
M22 - DCC0900304VWXAAX
M23 - DCC0900304VWXXAA
M24 - DCC0900304VXXXAA
M25 - DCC0900307VHDAAA

Top Panel and Tubing Assembly

IMAGE 1

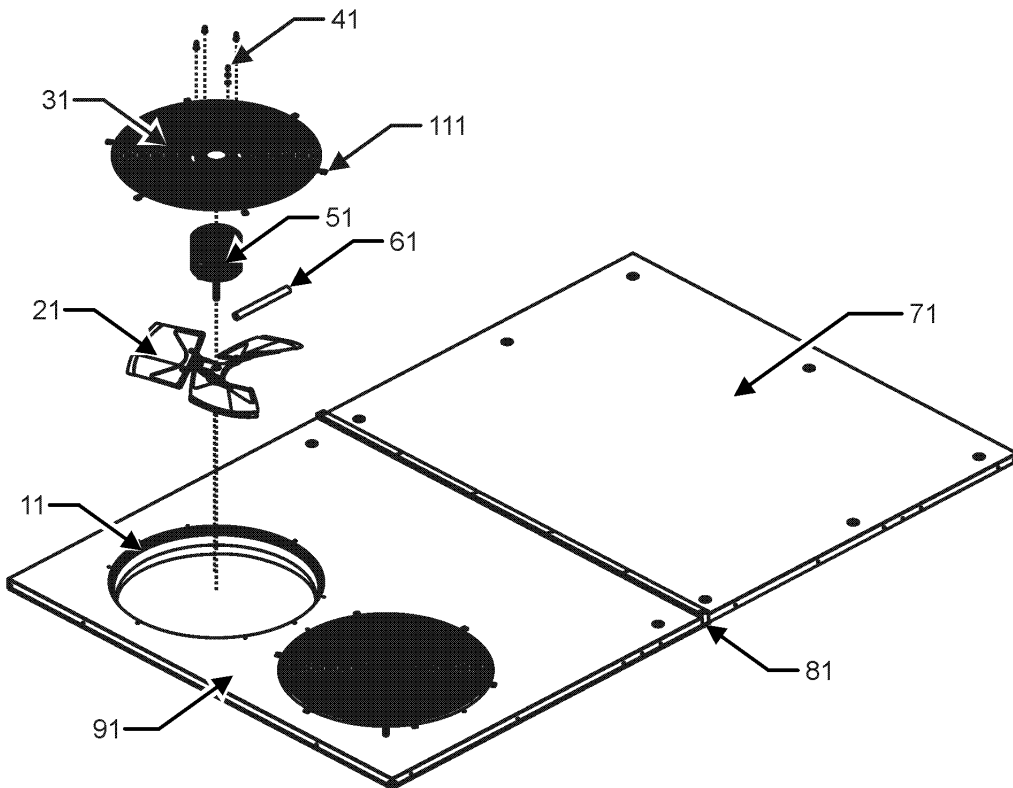
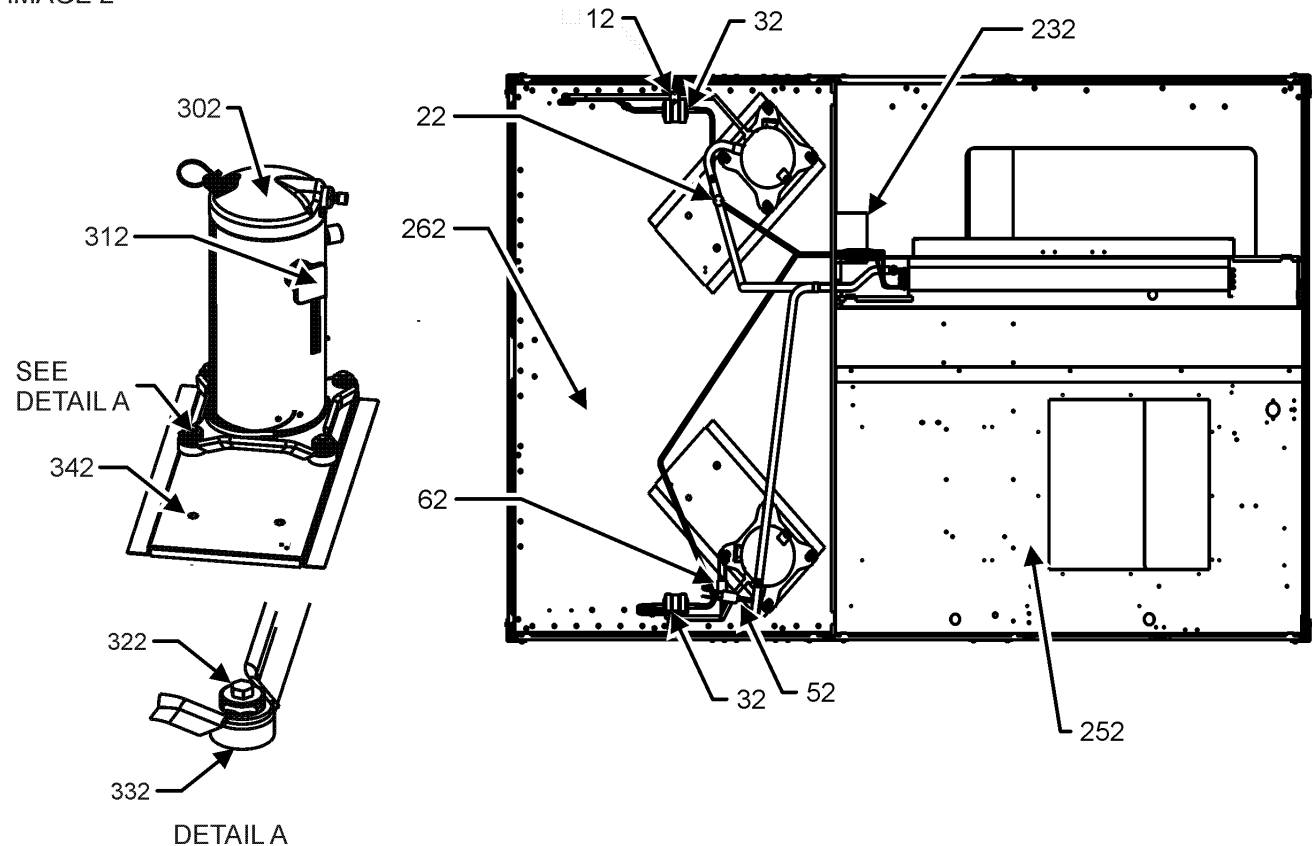


IMAGE 2

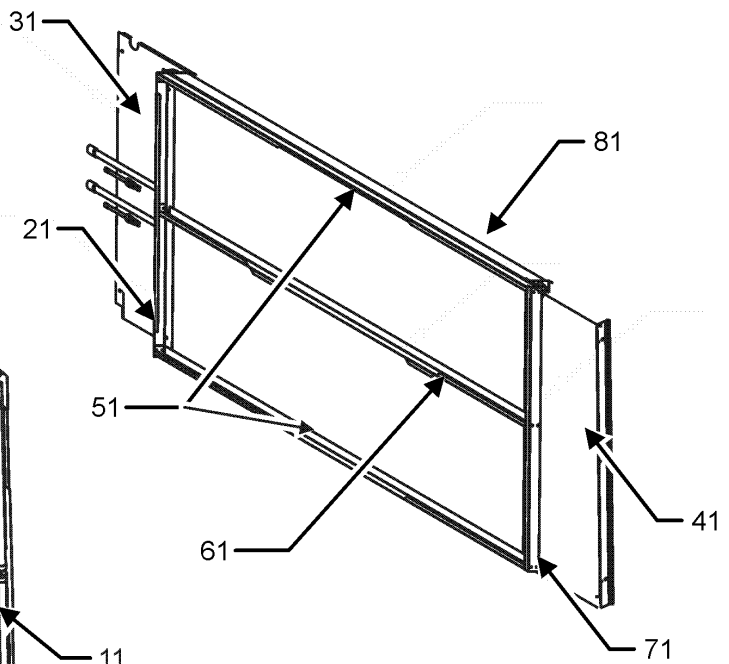
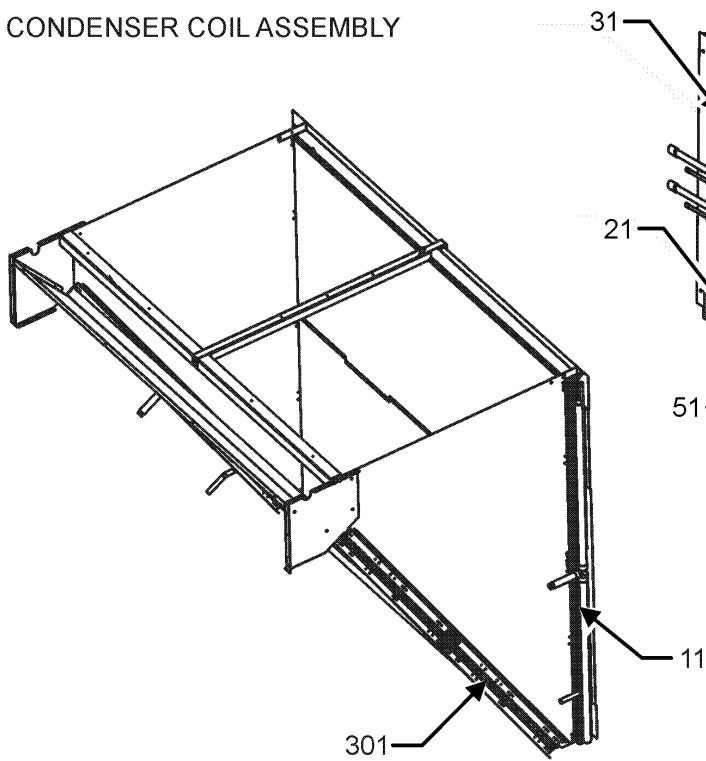


Top Panel and Tubing Assembly

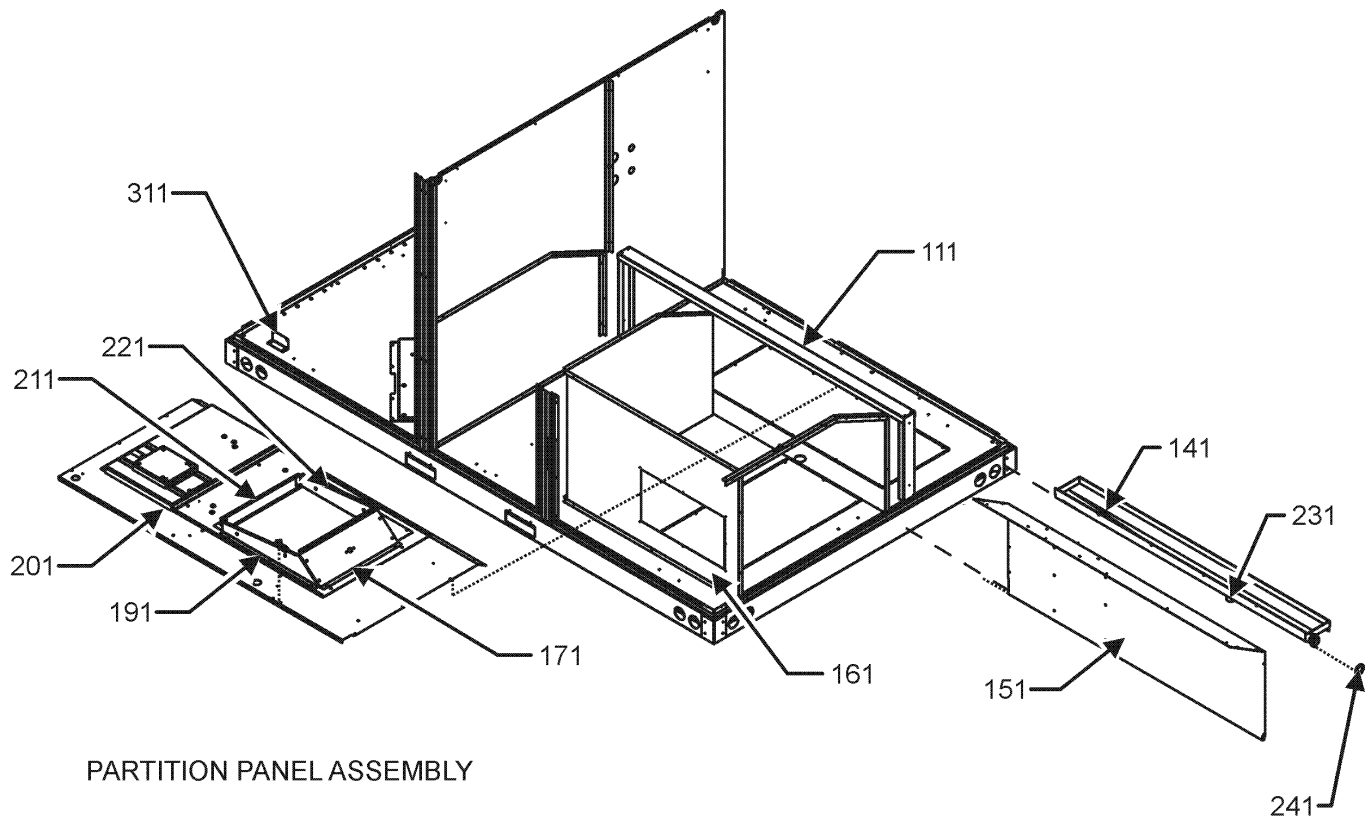
Ref. Part No: No:	Description:	Ref. Part No: No:	Description:
Image 1:		Expanded Model Nomenclature	
11	0161L00000 VENTURI RING 22" (QTY 2)	M1	- DCC090XXX3VAXXAA
21	0150G00001 FAN BLADE (QTY 2)	M2	- DCC090XXX3VVXMAA
31	0152G00000 FAN GRILLE, RAISED (QTY 2)	M3	- DCC090XXX3VXDAAA
41	0163M00006P ACORN NUT 5/16 HEX BLACK (QTY 8)	M4	- DCC090XXX3VXXVAA
51	0131M00431 COND MOTOR 575V (M9, M21, M25)	M5	- DCC090XXX3VXXXAA
51	0131M00847 MOTOR, 1/4 HP, 1 SP, 6 PL (M1, M3, M5, M10, M11, M12, M13, M14, M15, M17, M18, M19, M20)	M6	- DCC090XXX4VVXZAA
51	0131L00061 MOTOR, 1/4 HP, 1SP, 6PL (M2, M4, M16)	M7	- DCC090XXX4VXMYAA
51	0131M00857 MOTOR, 380/460 50/60 HZ (M6, M8, M22, M23,	M8	- DCC090XXX4VXXXAA
51	0131L00062 MOTOR, COND, 1/4 HP, 460V (M7)	M9	- DCC090XXX7VXXXAA
61	0161R00003P CONDUIT (QTY 2)	M10	- DCC0900163VADAAA
71	0121L01119NG PAINTED TOP PANEL INDOOR	M11	- DCC0900163VFDAAA
81	20455902 SPLICE GASKET .50 X .25 (QTY 8)	M12	- DCC0900163VHBAAA
91	0121L01118NG PAINTED TOP PANEL OUTDOOR	M13	- DCC0900163VHDAAA
111	0163M00005P WASHER, BLACK (.50 OD .218ID) (QTY 8)	M14	- DCC0900163VHDBAA
NS	0259L00511 HARNESS COND MOTOR	M15	- DCC0900163VHDXAA
NS	0259L00512 HARNESS COND MOTOR	M16	- DCC0900163VHMLAA
NS	0163M00004 SCREW #10X3/4" BLK (QTY 4)	M17	- DCC0900163VHXMAA
Image 2:		M18	- DCC0900163VWBAAA
12	0130M00031 CUT-OUT SWITCH, HIGH PRESSURE	M19	- DCC0900163VWXA AA
22	0130L00003 CUT-OUT SWITCH, LOW PRESSURE	M20	- DCC0900163VXDAAA
32	B1219204 BI-FLOW FILTER DRIER	M21	- DCC0900167VHDXAA
52	0130L00002 CUT-OUT SWITCH, LOW PRESSURE	M22	- DCC0900304VWXAAA
62	0130M00030 CUT-OUT SWITCH, HIGH PRESSURE	M23	- DCC0900304VWXXAA
232	0121L00359 SHIELD-EVAPORATOR DRIP	M24	- DCC0900304VXXXAA
252	0121L00944 BASE PAN - INDOOR	M25	- DCC0900307VHDXAA
262	0121L02129 BASEPAN, OUTDOOR		
302	ZP39K5ETF5130 COMPRESSOR 39000, 200/230/60/3 (M1, M2, M3, M4, M5, M10, M11, M12, M13, M14, M15, M16, M17, M18, M19, M20)		
302	ZP39K5ETFD130 COMPRESSOR 39000, 460/60/3 (M6, M7, M8, M22, M23, M24)		
302	ZP39K5ETFE130 COMPRESSOR 39000, 575/60/3 (M9, M21, M25)		
312	0159L00066 COMPRESSOR SCROLL HARNESS		
312	0159L00067 COMPRESSOR SCROLL HARNESS		
322	M0221641 TF SHOULDER SCREW (QTY 8)		
332	B1339533 COMPRESSOR GROMMET (QTY 8)		
342	0121L02128 MOUNTING PLATE, COMP (QTY 2)		
NS	B1373315 ACCESS FITTING (QTY 4)		
NS	0163M00175 CAP WITH O-RING (QTY 4)		

Condenser, Evaporator and Partition Assy

CONDENSER COIL ASSEMBLY



EVAPORATOR ASSEMBLY

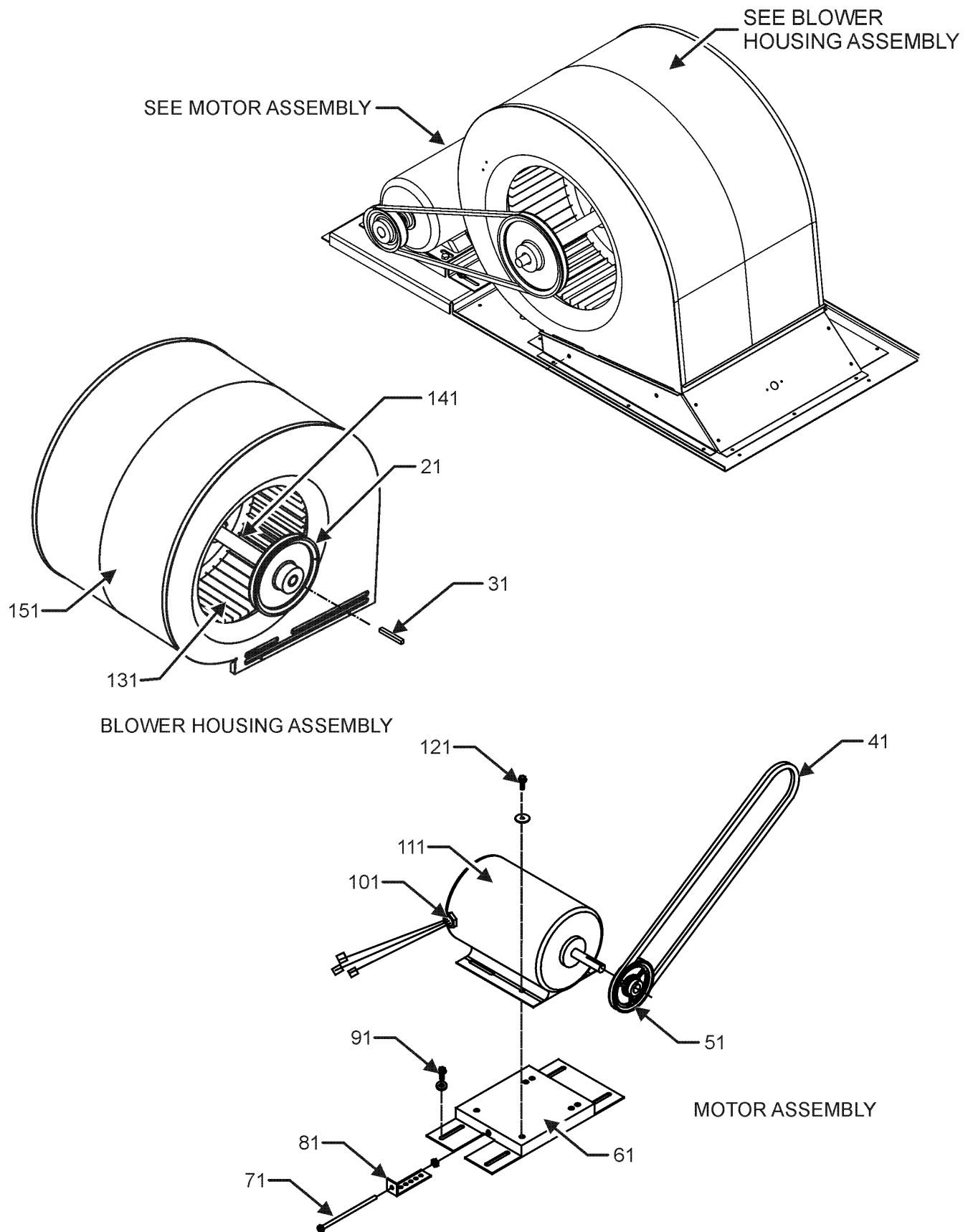


PARTITION PANEL ASSEMBLY

Condener, Evaporator and Partition Assy

Ref. Part No:	Description:	Ref. Part No:	Description:
Image 1:		Expanded Model Nomenclature	
11	0201L00677 COND COIL ASSY, 5MM	M1	- DCC090XXX3VAXXAA
21	0121L00357 FILTER ANGLE-VERTICAL (RETURN SIDE)	M2	- DCC090XXX3VVXMAA
31	0121L00210 EVAP EXTENSION-RETURN SIDE	M3	- DCC090XXX3VXDAAA
41	0121L00844 EVAP EXTENSION-HAIRPIN SIDE	M4	- DCC090XXX3VXXVAA
51	0121L00932 FILTER ANGLE-HORIZONTAL (QTY 2)	M5	- DCC090XXX3VXXXAA
61	0121L01255 ANGLE-FILTER CENTER	M6	- DCC090XXX4VVXZAA
71	0121L00358 FILTER ANGLE-VERTICAL (HAIRPIN SIDE)	M7	- DCC090XXX4VXMYAA
81	0202L00091 TUBING ASSY, EVAP COIL	M8	- DCC090XXX4VXXXAA
111	0121L02984 DRAIN PAN SUPPORT	M9	- DCC090XXX7VXXXAA
141	0161L00002 DRAIN PAN	M10	- DCC0900163VADAAA
151	0121L00374 DECK SIDE CHANNEL	M11	- DCC0900163VFDAAA
161	0121L00365 ELECTRIC HEAT PANEL	M12	- DCC0900163VHBAAA
171	0121L00090 BLOWER TRANSITION, RH END	M13	- DCC0900163VHDAAA
191	0121L00092 BLOWER TRANSITION, FRONT	M14	- DCC0900163VHDBAA
201	0121L03117 DECK-BLOWER	M15	- DCC0900163VHDXAA
211	0121L00097 BLOWER TRANSITION, LH END	M16	- DCC0900163VHMLAA
221	0121L00145 BLOWER TRANSITION, BACK	M17	- DCC0900163VHXMAA
231	0163L00071 DRAIN PAN PLUG	M18	- DCC0900163VWBAAA
301	0201L00678 COND COIL ASSY, 5MM	M19	- DCC0900163VWXA AA
311	0121L00369 BRACE-CONDENSER (QTY 2)	M20	- DCC0900163VXDPAA
NS	0160L00174 AIR FILTER 16 X 20 X 2 (QTY 4)	M21	- DCC0900167VHDXAA
NS	0121L01398 DECK, SUPPORT BLOWER (M3, M7, M10, M11, M13, M14, M15, M16, M20, M21, M25)	M22	- DCC0900304VWXAAA
NS	0121L01402 DECK, SUPPORT CONTROL (M3, M7, M10, M11, M13, M14, M15, M16, M20, M21, M25)	M23	- DCC0900304VWXXAA
NS	0121L00321 SMOKE DETECTOR COVER (QTY 2)	M24	- DCC0900304VXXXAA
		M25	- DCC0900307VHDXAA

Blower Motor Assembly



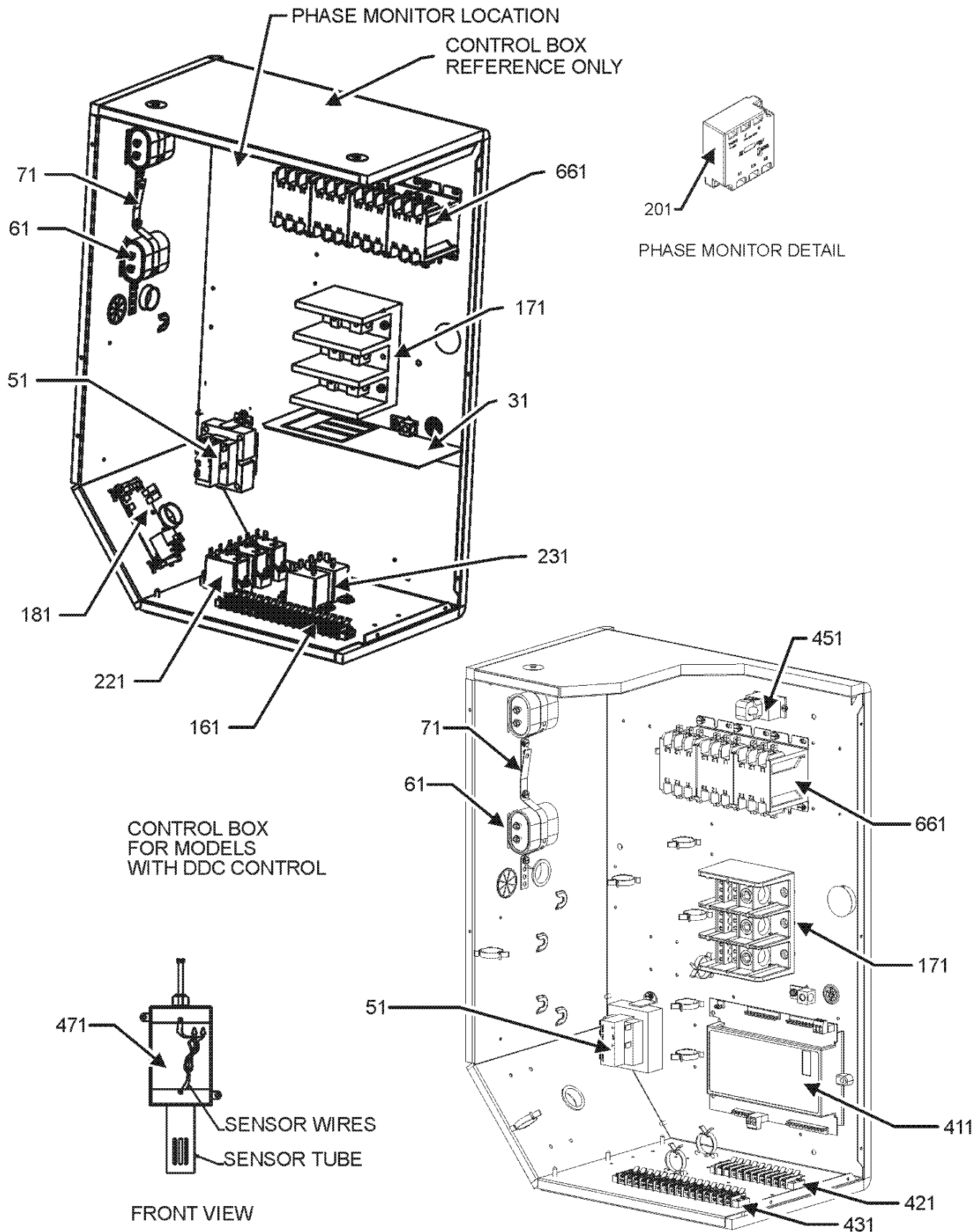
Blower Motor Assembly

Ref. Part No:	Ref. Part No:	Description:	Description:
Image 1:			
21	0163L00134	SHEAVE, FIXED AK74H	
31	0163M00407	MACHINE KEY, SPECIAL	
41	0164L00000	NOTCHED FAN BELT AX51	
51	0163L00012	VARIABLE PITCH SHEAVE VL40	
61	0270L00015	MOTOR BASE ASSY	
71	0163M00045	BOLT 1/4-20 X 4"	
81	3225000F	BELT TIGHTENER ANGLE	
91	B1446707	SCREW 5/16-18 X 1" (QTY 4)	
101	B1393726	ELECT. CONNECTING BUSHING	
111	0131L00041	MOTOR 2 HP BELT DRIVE 208-230V (M1, M2, M3, M4, M5, M10, M11, M12, M13, M14, M15, M16, M17, M18, M19, M20)	
111	0131L00043	MOTOR 2HP BELT DRIVE 460V (M6, M7, M8, M22, M23, M24)	
111	0131L00042	MOTOR 2HP BELT DRIVE 575V (M9, M21, M25)	
121	B1393738	BOLT 1/4-20 X 3/4" (QTY 4)	
131	03-77429	BLOWER WHEEL	
141	04-11525	BLOWER SHAFT	
151	04-01525	BLOWER HOUSING	
NS	04-02196	BEARING & FRAME ASSY	
NS	0259L00191	HARNES, BELT DRIVE MOTOR	

Expanded Model Nomenclature

M1 - DCC090XXX3VAXXAA
M2 - DCC090XXX3VVXMAA
M3 - DCC090XXX3VXDAAA
M4 - DCC090XXX3VXXVAA
M5 - DCC090XXX3VXXXAA
M6 - DCC090XXX4VVXZAA
M7 - DCC090XXX4VXMYAA
M8 - DCC090XXX4VXXXAA
M9 - DCC090XXX7VXXXAA
M10 - DCC0900163VADAAA
M11 - DCC0900163VFDAAA
M12 - DCC0900163VHBAAA
M13 - DCC0900163VHDAAA
M14 - DCC0900163VHDBAA
M15 - DCC0900163VHDAAA
M16 - DCC0900163VHMLAA
M17 - DCC0900163VHXMAA
M18 - DCC0900163VWBEAA
M19 - DCC0900163VWXAAA
M20 - DCC0900163VXDAAA
M21 - DCC0900167VHDAAA
M22 - DCC0900304VWXAAA
M23 - DCC0900304VWXXAA
M24 - DCC0900304VXXXAA
M25 - DCC0900307VHDAAA

Control Box Assembly



Control Box Assembly

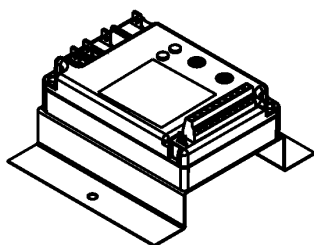
Ref. Part No:	Ref. Part No:	Description:	Description:
Image 1:		Expanded Model Nomenclature	
31	0121G00491	VOLTAGE BARRIER	M1 - DCC090XXX3VAXXAA
51	0130M00594	TRANSFORMER (M1, M2, M3, M4, M5, M10, M11, M12, M13, M14, M15, M16, M17, M18, M19, M20)	M2 - DCC090XXX3VVXMAA
51	0130M00595	TRANSFORMER, 75VA, 480V TO 24V (M6, M7, M8, M22, M23, M24)	M3 - DCC090XXX3VXDAAA
51	0130M00598	TRANSFORMER, 75VA, 575V TO 24V (M9, M21, M25)	M4 - DCC090XXX3VXXVAAA
61	CAP075000440LA	CAP 7.5 MFD/440V/OVAL (M7)	M5 - DCC090XXX3VXXXAAA
61	CAP050000370LA	CAP, 5 MFD/370V/OVAL (M1, M2, M3, M4, M5, M10, M11, M12, M13, M14, M15, M16, M17, M18, M19, M20)	M6 - DCC090XXX4VVXZAA
61	CAP075000370LA	CAP, 7.5 MFD/370V/OVAL (M6, M8, M22, M23, M24)	M7 - DCC090XXX4VXMYAAA
61	CAP030000440LA	CAPACITOR (M9, M21, M25)	M8 - DCC090XXX4VXXXAAA
71	20520901	CAPACITOR STRAP (QTY 2)	M9 - DCC090XXX7VXXXAAA
161	0130M00038	TERMINAL STRIP	M10 - DCC0900163VADAAA
171	0130M00042	BLOCK, DISTRIB. 7.5-25 TON	M11 - DCC0900163VFDAAA
181	PCBFM103	PCB, TIME DELAY, EBTDR	M12 - DCC0900163VHBAAA
201	0130L00105	PHASE MONITOR (M7, M12, M16, M18)	M13 - DCC0900163VHDAAA
221	10135604	RELAY (QTY 2)	M14 - DCC0900163VHDBAA
231	0130M00242	RELAY, 24V (QTY 2)	M15 - DCC0900163VHDXAAA
411	PCBCG103	PCB, CONTROL, HP, GAS ,AC (M11)	M16 - DCC0900163VHMLAAA
421	0130M00274	TERMINAL BOARD (M11)	M17 - DCC0900163VHXMAA
431	0130M00275	TERMINAL BOARD (M11)	M18 - DCC0900163VWBAAA
451	0259L00368	CURRENT SWITCH WITH TERMS (M11)	M19 - DCC0900163VWXAAA
471	0130L00108	OD Air Temp Sensor (M11)	M20 - DCC0900163VXDAAA
661	CONT3P025024V	CONTACTOR 25 AMP, 3P, 24V (QTY 4)	M21 - DCC0900167VHDAAA
NS	0130L00112	Duct Temp Sensor (M11)	M22 - DCC0900304VWXAAA
NS	0259L00092	HARNESS-SMOKE DETECTOR SENSOR (M6, M7, M16)	M23 - DCC0900304VWXXAAA
NS	0259L00032	LCM HARNESS, ELECTRIC HEAT	M24 - DCC0900304VXXXAAA
NS	0130L00107	ROOM SENSOR (M11)	M25 - DCC0900307VHDAAA
NS	0259L00428	WIRE ASSY (M7, M12, M16, M18)	
NS	0259L00447	WIRE ASSY (M7, M12, M16, M18)	
NS	0259L00148	WIRE HARNESS ASSY	
NS	0259L00149	WIRE HARNESS ASSY	
NS	0259L00090	WIRE HARNESS-SMOKE DETECTOR (M4, M6, M7, M16, M18, M20)	
Image 2:			
NS	0259L00153	2 SPEED CONTROL HARNESS	
NS	0259L00155	2 SPEED RELAY HARNESS	
NS	0259L00165	ECONOMIZER HARNESS	
NS	0259L00191	HARNESS, BELT DRIVE MOTOR	
NS	0259L00502	WIRE HARNESS	
NS	0259L00152	WIRE HARNESS ASSY	
NS	0259L00158	WIRE HARNESS ASSY	
NS	0259L00428	WIRE, HARNESS ASSY (M7, M12, M16, M18)	

Accessory Part List

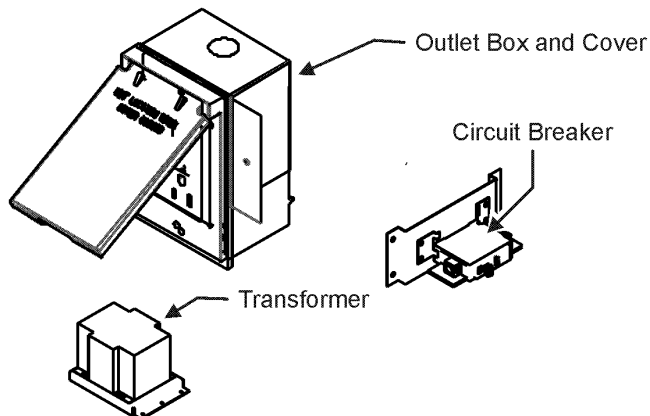
ACCESSORY PARTS LIST

NOTE: NOT ALL OPTIONS AVAILABLE FOR ALL PRODUCTS

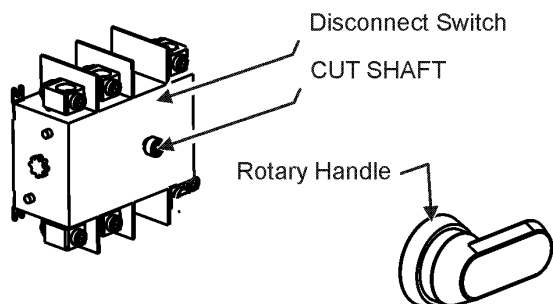
1 LOW AMBIENT KITS



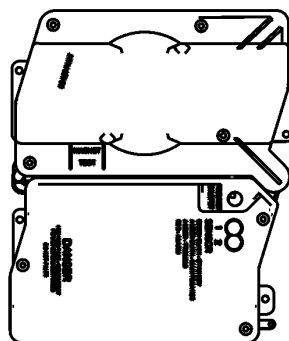
2 GFCI CONVENIENCE OUTLET



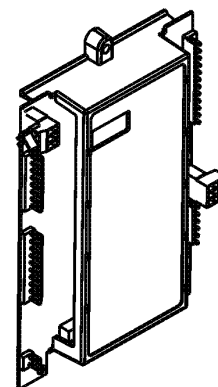
3 DISCONNECT MODULE (NON-FUSED)



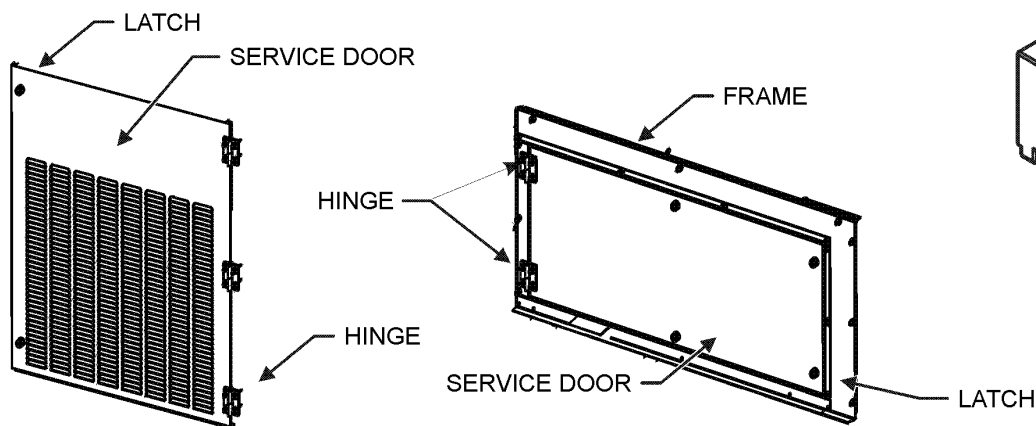
4 SMOKE DETECTORS



5 DDC CONTROL



6 HINGED DOOR ASSEMBLIES



7 PHASE MONITOR

