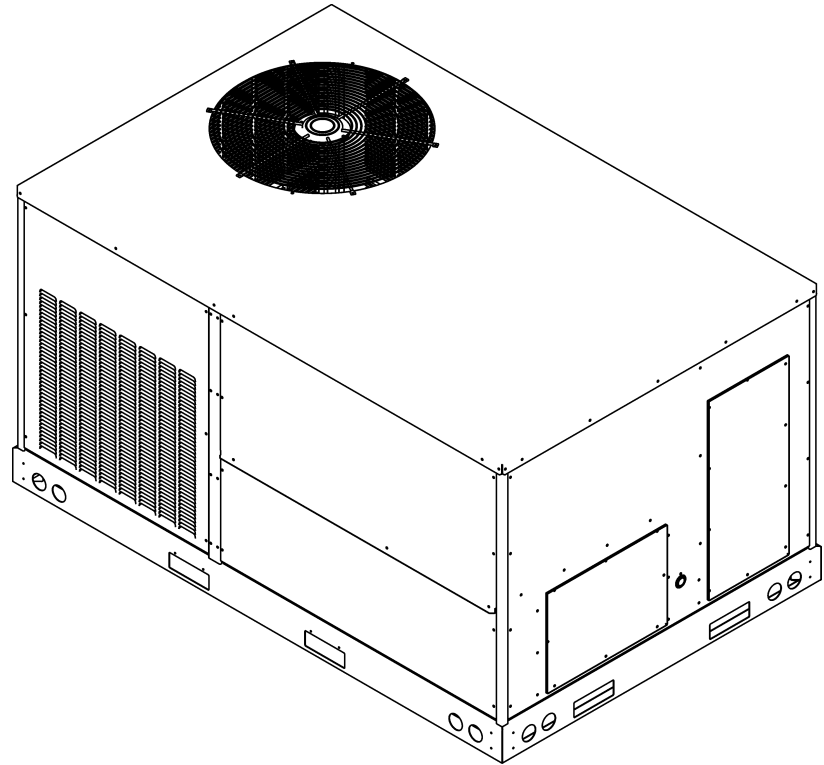


## Commercial 5 Ton Package Cooling Unit

DCC0600103BHXCAA  
DCC0600103BJXFAA  
DCC0600153BHXAAB  
DCC0600154BAXCAC  
DCC0600154BHXFAC  
DCC0600154BJDNAC  
DCC0600203BHXXAB  
DCC0600203BJXFAA  
DCC0600204BAXFAB  
DCC0600204BHXBAC  
DCC0600204BVDXAC  
DCC060XXX3BBXXAA  
DCC060XXX3BXDXAA  
DCC060XXX3BXXXAA  
DCC060XXX3BXXXAB  
DCC060XXX4BAXAAB  
DCC060XXX4BAXXAB  
DCC060XXX4BBXXAA  
DCC060XXX4BHXOA  
DCC060XXX4BHXRAB  
DCC060XXX4BHXXAB  
DCC060XXX4BXXBAB  
DCC060XXX4BXXXAA  
DCC060XXX4BXXXAB  
DCC060XXX4BXXXAC  
DCC060XXX7BBXXAA  
DCC060XXX7BXXXAA  
DCC060XXX7BXXXAB



This manual is to be used by qualified technicians only.

This manual replaces RP-D1019H.

© 2013 - 2016 **DAIKIN COMPANY, L.P.** ♦ 5151 San Felipe St., Suite 500 ♦ Houston, TX 77056

# Important Information

---

## Index

Functional Parts List .....	3
Illustration and Parts .....	4 - 15

*Views shown are for parts illustrations only, not servicing procedures*

### Text Codes:

AR - As Required

NA - Not Available

NS - Not Shown

00000000 - See Note

QTY - Quantity Example (QTY 3) (If Quantity not shown, Quantity = 1)

M - Model Example (M1) (If M Code not shown, then part is used on all Models)

### Expanded Model Nomenclature:

Example M1 - Model#1 M2 - Model#2 M3 - Model#3
---

Daikin Company, L.P. is not responsible for personal injury or property damage resulting from improper service. Review all service information before beginning repairs.

Warranty service must be performed by an authorized technician, using authorized factory parts. If service is required after the warranty expires, Daikin Company, L.P. also recommends contacting an authorized technician and using authorized factory parts.

Daikin Company, L.P. reserves the right to discontinue, or change at any time, specifications or designs without notice or without incurring obligations.

For assistance within the U.S.A. contact:

Homeowner Support  
Daikin North America, LLC  
19001 Kermier Road  
Waller, Texas 77484  
855-770-5678-Telephone  
713-863-2382-Facsimile

For assistance outside the U.S.A. contact:

International Division  
Daikin North America, LLC  
19001 Kermier Road  
Waller, Texas 77484  
713-861-2500-Telephone  
713-863-2382-Facsimile

# Functional Parts

**Part No:**      **Description:**

Part No:	Description:	Expanded Model Nomenclature
B1368056	BELT DRIVE BLOWER WHEEL	M1 - DCC060XXX3BBXXAA
0131L00003	BELT DRIVE MOTOR 1 HP (M1, M2, M3, M4, M5, M6, M7, M8, M9, M10, M11, M12, M13, M14, M18, M19, M20, M21, M22, M23, M24, M25, M26, M27, M28)	M2 - DCC060XXX3BXDXAA M3 - DCC060XXX3BXXXAA
0131L00004	BELT DRIVE MOTOR 1.5 HP 575V (M15, M16, M17)	M4 - DCC060XXX3BXXXAB
CAP030000440LA	CAPACITOR 3/440V (M15, M17)	M5 - DCC060XXX4BAXAAB
CAP050000370LA	CAPACITOR 5/370V (M1, M2, M3, M4, M12, M16, M18, M19, M20, M24, M25)	M6 - DCC060XXX4BAXXAB
CAP075000370LA	CAPACITOR 7.5/370V (M5, M6, M7, M8, M9, M10, M11, M13, M14, M21, M22, M23, M26, M27, M28)	M7 - DCC060XXX4BBXXAA
ZP51K5ETF5130	COMPRESSOR 51000, 208/230/60/3 (M1, M2, M3, M4, M18, M19, M20, M24, M25)	M8 - DCC060XXX4BHXCAC
ZP51K5ETFD130	COMPRESSOR 51000, 460/60/3 (M5, M6, M7, M8, M9, M10, M11, M12, M13, M14, M21, M22, M23, M26, M27, M28)	M9 - DCC060XXX4BHXRAB
ZP51K5ETFE130	COMPRESSOR 51000, 575/60/3 (M15, M16, M17)	M10 - DCC060XXX4BHXXAB
0131M00429	COND MOTOR 1/4 HP, 1 SP, 6 PL (M1, M2, M3, M4, M18, M19, M20, M24, M25)	M11 - DCC060XXX4BXXBAB
B13400269	COND MOTOR 380/460 50/60 CYCLE (M12)	M12 - DCC060XXX4BXXXAA
0131M00432	COND MOTOR 380/460/50/60 CYCLE (M5, M6, M7, M8, M9, M10, M11, M13, M14, M21, M22, M23, M26, M27, M28)	M13 - DCC060XXX4BXXXAB
0131M00431	COND MOTOR 575V (M15, M17)	M14 - DCC060XXX4BXXXAC
0131M00098	COND MOTOR 575V (M16)	M15 - DCC060XXX7BBXXAA
CONT3P025024V	CONTACTOR 25 AMP, 3P, 24V (M5, M6, M7, M8, M9, M10, M11, M12, M13, M14, M15, M16, M17, M21, M22, M23, M26, M27, M28)	M16 - DCC060XXX7BXXXAA
CONT3P030024V	CONTACTOR 30 AMP, 3P, 24V (M1, M2, M3, M4, M18, M19, M20, M24, M25)	M17 - DCC060XXX7BXXXAB
0130M00074	CUT-OUT SWITCH, HIGH PRESSURE	M18 - DCC0600103BHXCAA
0130M00087	CUT-OUT SWITCH, LOW PRESSURE	M19 - DCC0600103BJXFAA
PCBCG100	DDC Controller (M1, M7, M15)	M20 - DCC0600153BHXAAB
0130L00112	Duct Temp Sensor (M1, M7, M15)	M21 - DCC0600154BAXCAC
PCBFM103	ELECTRONIC BLOWER TIME DELAY	M22 - DCC0600154BHXFAC
0164L00010	FAN BELT, NOTCHED	M23 - DCC0600154BJDNAC
0150G00004	FAN BLADE	M24 - DCC0600203BHXXAB
0130L00108	OD Air Temp Sensor (M1, M7, M15)	M25 - DCC0600203BJXFAA
0130M00038	TERMINAL BOARD	M26 - DCC0600204BAXFAB
0130M00274	TERMINAL BOARD (M1, M7, M15)	M27 - DCC0600204BHXBAC
0130M00275	TERMINAL BOARD (M1, M7, M15)	M28 - DCC0600204BVDXAC
0130M00138	TRANSFORMER 208/230, 24V (M1, M2, M3, M4, M18, M19, M20, M24, M25)	
0130M00145	TRANSFORMER 480V to 24V, 75VA (M5, M6, M7, M8, M9, M10, M11, M12, M13, M14, M21, M22, M23, M26, M27, M28)	
0130M00148	TRANSFORMER 575V to 24V, 75VA (M15, M16, M17)	

# Top Panel and Tubing Assy

IMAGE 1

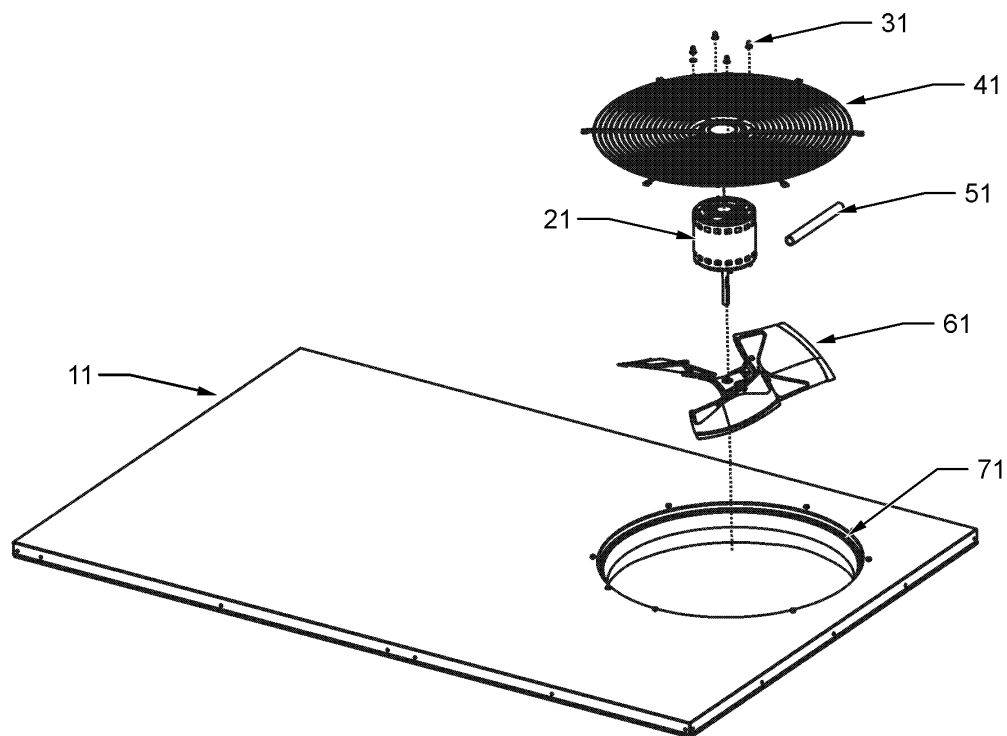
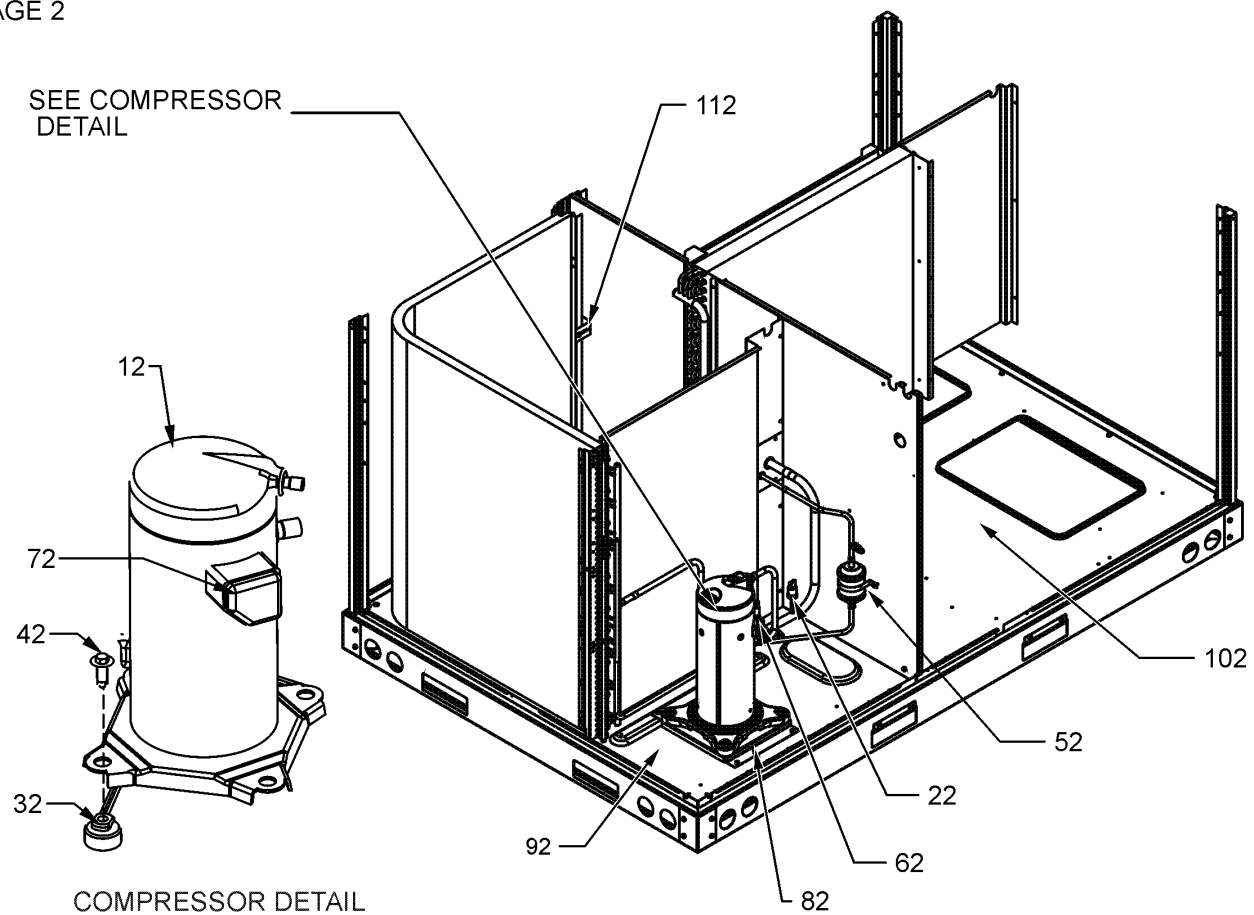


IMAGE 2



# Top Panel and Tubing Assy

Ref. Part No: No:	Description:	Ref. Part No: No:	Description:
<b>Image 1:</b>		<b>Expanded Model Nomenclature</b>	
11	0121L00235NG TOP PANEL	M1	- DCC060XXX3BBXXAA
21	0131M00429 COND MOTOR 1/4 HP, 1 SP,6 PL (M1, M2, M3, M4, M18, M19, M20, M24, M25)	M2	- DCC060XXX3BXXAA
21	B13400269 COND MOTOR 380/460 50/60 CYCLE (M12)	M3	- DCC060XXX3BXXAA
21	0131M00432 COND MOTOR 380/460/50/60 CYCLE (M5, M6, M7, M8, M9, M10, M11, M13, M14, M21, M22, M23, M26, M27, M28)	M4	- DCC060XXX3BXXAB
21	0131M00098 COND MOTOR 575V (M16)	M5	- DCC060XXX4BAXAAB
21	0131M00431 COND MOTOR 575V (M15, M17)	M6	- DCC060XXX4BAXXAB
31	0163M00006P ACORN NUT 5/16 HEX BLACK (QTY 4)	M7	- DCC060XXX4BXXAA
41	0152G00003 FAN GRILLE	M8	- DCC060XXX4BHXOAC
51	17788000083F PVC CONDUIT 8.25"	M9	- DCC060XXX4BHXRAB
61	0150G00004 FAN BLADE	M10	- DCC060XXX4BHXXAB
71	0161L00000 VENTURI RING 22"	M11	- DCC060XXX4BXXBAB
NS	0163M00004 SCREW #10X3/4", BLACK (QTY 3)	M12	- DCC060XXX4BXXAA
NS	0163M00005P WASHER, BLACK (.50 OD .218ID) (QTY 4)	M13	- DCC060XXX4BXXAB
<b>Image 2:</b>		M14	- DCC060XXX4BXXAC
12	ZP51K5ETF5130 COMPRESSOR 51000, 208/230/60/3 (M1, M2, M3, M4, M18, M19, M20, M24, M25)	M15	- DCC060XXX7BBXXAA
12	ZP51K5ETFD130 COMPRESSOR 51000, 460/60/3 (M5, M6, M7, M8, M9, M10, M11, M12, M13, M14, M21, M22, M23, M26, M27, M28)	M16	- DCC060XXX7BXXAA
12	ZP51K5ETFE130 COMPRESSOR 51000, 575/60/3 (M15, M16, M17)	M17	- DCC060XXX7BXXAB
22	0130M00087 CUT-OUT SWITCH, LOW PRESSURE	M18	- DCC0600103BHXCAB
32	B1339533 COMPRESSOR GROMMET (QTY 4)	M19	- DCC0600103BJXFAA
42	M0221641 TF SHOULDER SCREW (QTY 4)	M20	- DCC0600153BHXAAB
52	0162R00009 FILTER DRIER	M21	- DCC0600154BAXCAC
62	0130M00074 CUT-OUT SWITCH, HIGH PRESSURE	M22	- DCC0600154BHXFAC
72	0159L00065 COMPRESSOR SCROLL HARNESS	M23	- DCC0600154BJDNAC
82	0121L00310 COMPRESSOR MOUNTING PLATE	M24	- DCC0600203BHXXAB
92	0121L01307 BASE PAN-OUTDOOR	M25	- DCC0600203BJXFAA
102	0121L00943 BASE PAN-INDOOR	M26	- DCC0600204BAXFAB
112	0121L00936 BRACKET-HAIRPIN END	M27	- DCC0600204BHXBAC
NS	B1373315 ACCESS FITTING (QTY 2)	M28	- DCC0600204BVDXAC
NS	0141L00003X FORK BOARD (QTY 2)		
NS	0121L00055 FORK BOARD BRACKET (QTY 4)		

# Cabinet Assy

IMAGE 1

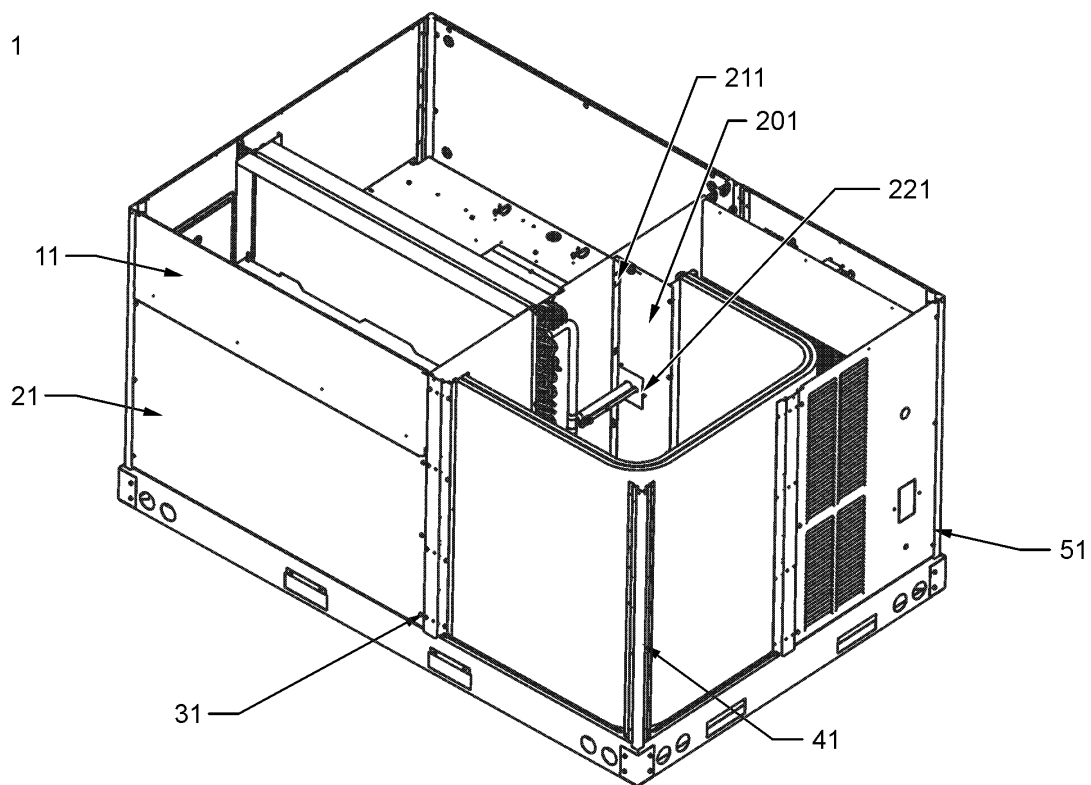
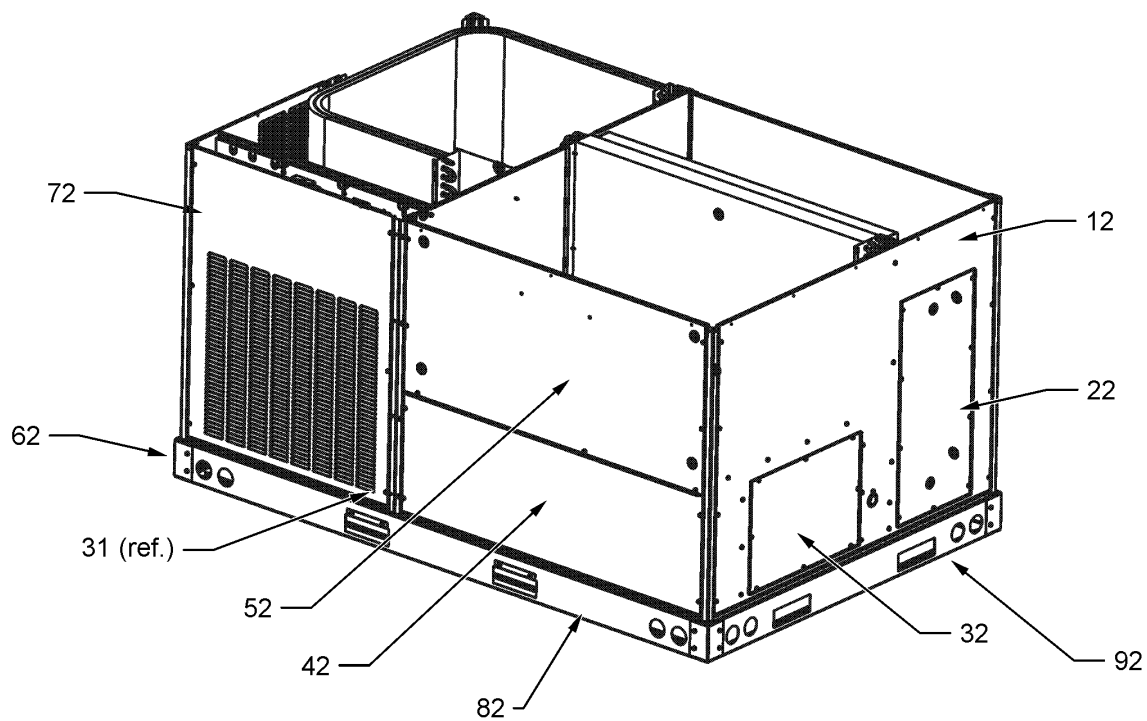


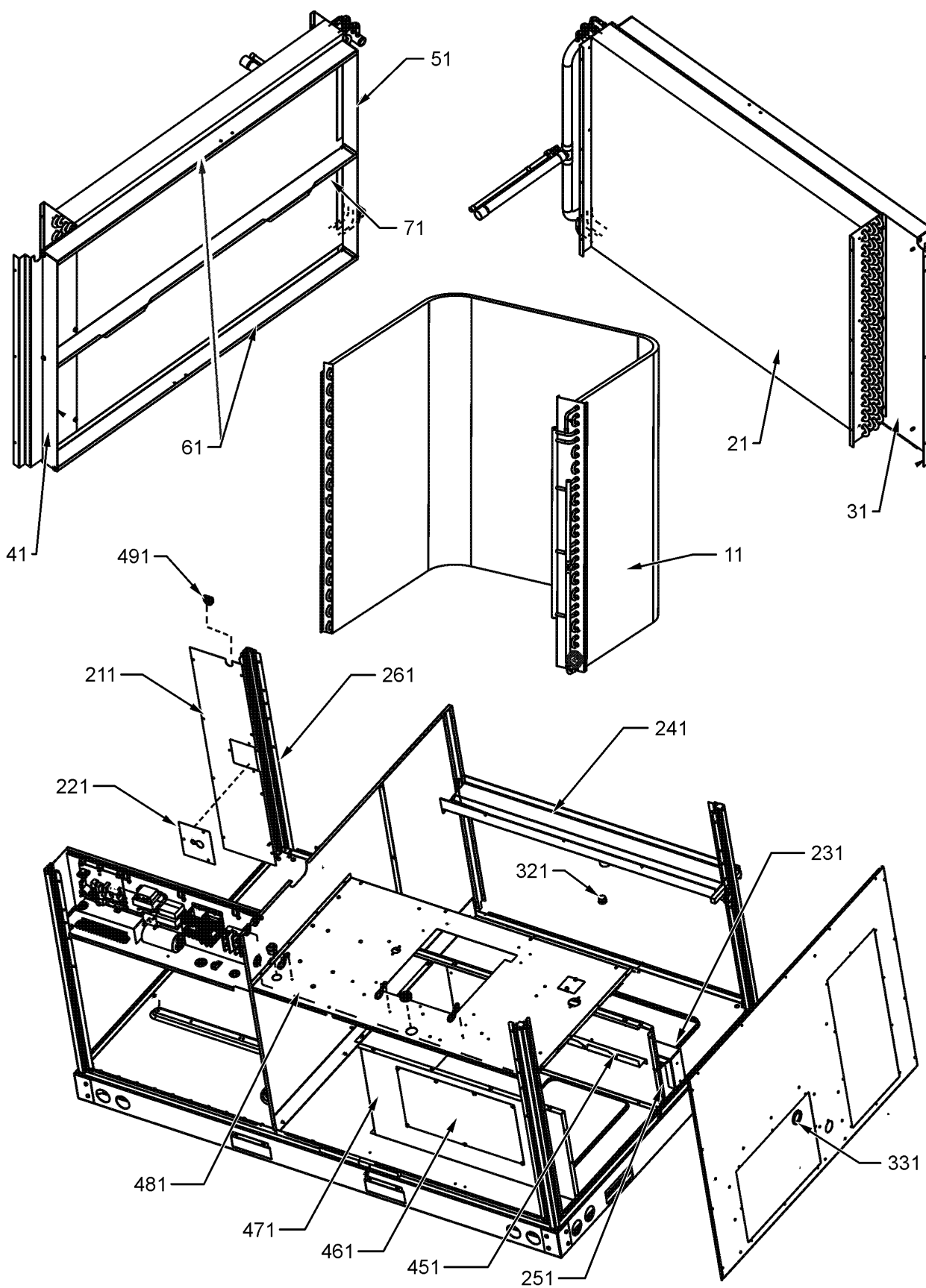
IMAGE 2



# Cabinet Assy

Ref. Part No: No:	Description:	Ref. Part No: No:	Description:
<b>Image 1:</b>		<b>Expanded Model Nomenclature</b>	
11	0270L00362NG FILTER DOOR	M1	- DCC060XXX3BBXXAA
21	0121L00976NG ECONOMIZER DOOR (M1, M2, M3, M4, M7, M8, M9, M10, M11, M12, M13, M14, M15, M16, M17, M18, M20, M22, M24, M27, M28)	M2	- DCC060XXX3BXDXAA
31	0121L00233RFNG POST-SIDE SUPPORT (QTY 2)	M3	- DCC060XXX3BXXXAA
31	0121L01159RFNG POST-SIDE SUPPORT (M1, M4, M7, M8, M14, M15, M17, M20, M21, M22, M24, M27)	M4	- DCC060XXX3BXXXAB
31	0121L01374RFNG POST-SIDE SUPPORT (M2, M23, M28)	M5	- DCC060XXX4BAXAAB
41	0121L00237RFNG CORNER POST (QTY 4)	M6	- DCC060XXX4BAXXAB
41	0121L01375RFNG CORNER POST (M2, M23, M28)	M7	- DCC060XXX4BBXXAA
51	0121L00263NG LOUVERED COMPRESSOR PANEL (M1, M3, M4, M5, M6, M7, M11, M12, M13, M14, M15, M16, M17, M19, M21, M24, M25, M26)	M8	- DCC060XXX4BH XOAC
51	0121L00836NG LOUVERED COMPRESSOR PANEL (M8, M9, M10, M18, M20, M22, M27)	M9	- DCC060XXX4BHXRAB
51	0121L01327NG LOUVERED COMPRESSOR PANEL (M2, M23, M28)	M10	- DCC060XXX4BHXXAB
201	0121L00882 COND BLOCK-OFF	M11	- DCC060XXX4BXXBAB
211	0121L00254 COND MOUNTING ANGLE	M12	- DCC060XXX4BXXXAA
221	0121L00939 CONDENSER BLOCKOFF PLATE	M13	- DCC060XXX4BXXXAB
NS	0121L01309 ECONOMIZER COVER (M5, M6, M19, M21, M23, M25, M26)	M14	- DCC060XXX4BXXXAC
NS	0164L00009 GASKET-RUBBER, CPOST (QTY 3)	M15	- DCC060XXX7BBXXAA
NS	0164L00011 GASKET-RUBBER, SIDE POST (QTY 2)	M16	- DCC060XXX7BXXXAA
<b>Image 2:</b>		M17	- DCC060XXX7BXXXAB
12	0121L00236NG DUCT PANEL	M18	- DCC0600103BHXC AA
22	0121L00023NG RETURN DUCT COVER	M19	- DCC0600103BJXFAA
32	0121L00024NG SUPPLY DUCT COVER	M20	- DCC0600153BHXAAB
42	0121L00279NG ELECTRIC HEAT DOOR (M3, M5, M6, M9, M10, M11, M12, M13, M16, M18, M19, M25, M26)	M21	- DCC0600154BAXCAC
42	0121L01176NG ELECTRIC HEAT DOOR (M1, M2, M4, M7, M8, M14, M15, M17, M20, M21, M22, M23, M24, M27, M28)	M22	- DCC0600154BHXFAC
52	0121L00259NG BLOWER DOOR (M3, M5, M6, M9, M10, M11, M12, M13, M16, M18, M19, M25, M26)	M23	- DCC0600154BJDNAC
52	0121L01157NG BLOWER DOOR (M1, M2, M4, M7, M8, M14, M15, M17, M20, M21, M22, M23, M24, M27, M28)	M24	- DCC0600203BHXXAB
62	0121G00301 RAIL CORNER BRACKET (QTY 4)	M25	- DCC0600203BJXFAA
72	0121L00262NG LOUVERED CONTROL PANEL (M3, M5, M6, M9, M10, M11, M12, M13, M16, M18, M19, M25, M26)	M26	- DCC0600204BAXFAB
72	0121L01121NG LOUVERED CONTROL PANEL (M1, M2, M4, M7, M8, M14, M15, M17, M20, M21, M22, M23, M24, M27, M28)	M27	- DCC0600204BHXBAC
82	0121L00244RF SIDE RAIL (QTY 2)	M28	- DCC0600204BV DXAC
92	0121L00245 END RAIL (QTY 2)		
NS	0141L00003X FORK BOARD (QTY 2)		
NS	0121L00055 FORK BOARD BRACKET (QTY 4)		
NS	B1392139 VIEW PORT BUSHING-BLOWER DOOR (M23)		

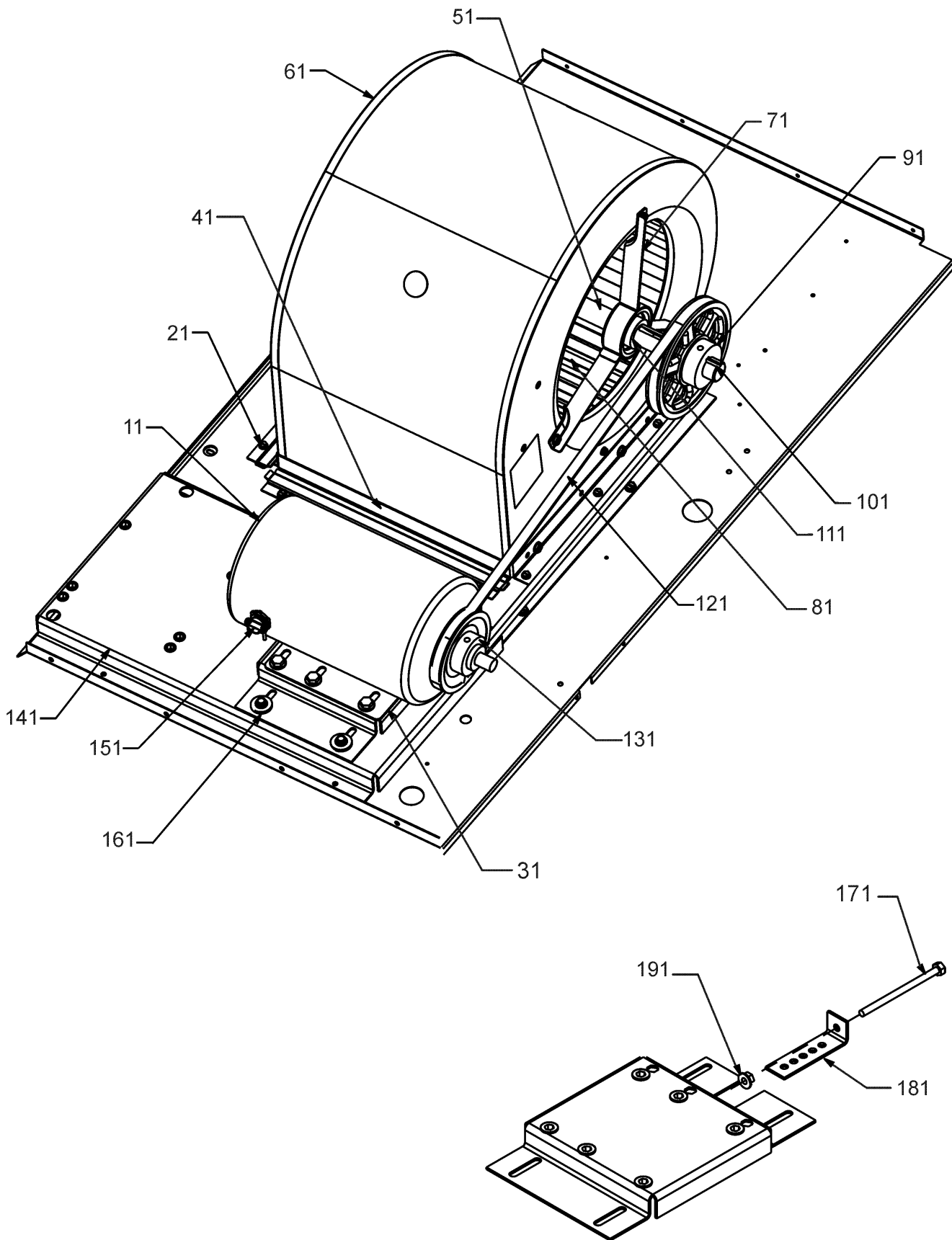
# Partition Assy



# Partition Assy

Ref. Part No: No:	Description:	Ref. Part No: No:	Description:
<b>Image 1:</b>		<b>Expanded Model Nomenclature</b>	
11	0201L00141 TUBING ASSY, COND COIL	M1	- DCC060XXX3BBXXAA
21	0202L00020 TUBING ASSY, EVAP COIL	M2	- DCC060XXX3BXDXAA
31	0121L00252 BLOCKOFF-EVAPORATOR (M1, M2, M3, M4, M5, M6, M7, M9, M10, M11, M12, M13, M14, M15, M16, M17, M18, M19, M20, M21, M22, M24, M25, M26, M27, M28)	M3	- DCC060XXX3BXXXAA
31	0121L00337 BLOCKOFF-EVAPORATOR (M8, M23)	M4	- DCC060XXX3BXXXAB
41	0121L00303 FILTER ANGLE-VERTICAL (HAIRPIN SIDE)	M5	- DCC060XXX4BAXAAB
51	0121L00287 FILTER ANGLE-VERTICAL (RETURN SIDE)	M6	- DCC060XXX4BAXXAB
61	0121L00932 FILTER ANGLE-HORIZONTAL (QTY 2)	M7	- DCC060XXX4BBXXAA
71	0121L01255 ANGLE-FILTER CENTER	M8	- DCC060XXX4BHXOAC
211	0121L00882 BLOCKOFF-CONDENSER	M9	- DCC060XXX4BHXRAB
221	0121L00939 CONDENSER BLOCKOFF PLATE	M10	- DCC060XXX4BHXXAB
231	0121L00238 DRAIN PAN SUPPORT	M11	- DCC060XXX4BXXBAB
241	0161L00005 DRAIN PAN	M12	- DCC060XXX4BXXXAA
251	0121L00243 DECK SIDE CHANNEL	M13	- DCC060XXX4BXXXAB
261	0121L00254 COND MOUNTING ANGLE	M14	- DCC060XXX4BXXXAC
321	0163L00071 DRAIN PLUG	M15	- DCC060XXX7BBXXAA
331	0154L00009 DRAIN PAN GASKET	M16	- DCC060XXX7BXXXAA
451	0121L00288 ELECTRIC HEAT RETAINER	M17	- DCC060XXX7BXXXAB
461	0121L00144 ELECTRIC HEAT COVER	M18	- DCC0600103BHXCAA
471	0121L00256 ELECTRIC HEAT PANEL	M19	- DCC0600103BJXFAA
481	0121L01205 BLOWER DECK (M3, M5, M6, M9, M10, M11, M12, M13, M16, M18, M19, M25, M26)	M20	- DCC0600153BHXAAB
481	0121L01442 BLOWER DECK (M1, M2, M4, M7, M8, M14, M15, M17, M20, M21, M22, M23, M24, M27, M28)	M21	- DCC0600154BAXCAC
491	A4568804 GROMMET-D (QTY 4)	M22	- DCC0600154BHXFAC
NS	0160L00173 AIR FILTER 14 X 20 X 2 (QTY 4)	M23	- DCC0600154BJDNAC
NS	0121L01377 BLOWER DECK SUPPORT (M2, M28)	M24	- DCC0600203BHXXAB
NS	0121L00321 SMOKE DETECTOR COVER	M25	- DCC0600203BJXFAA
		M26	- DCC0600204BAXFAB
		M27	- DCC0600204BHXBAC
		M28	- DCC0600204BVDXAC

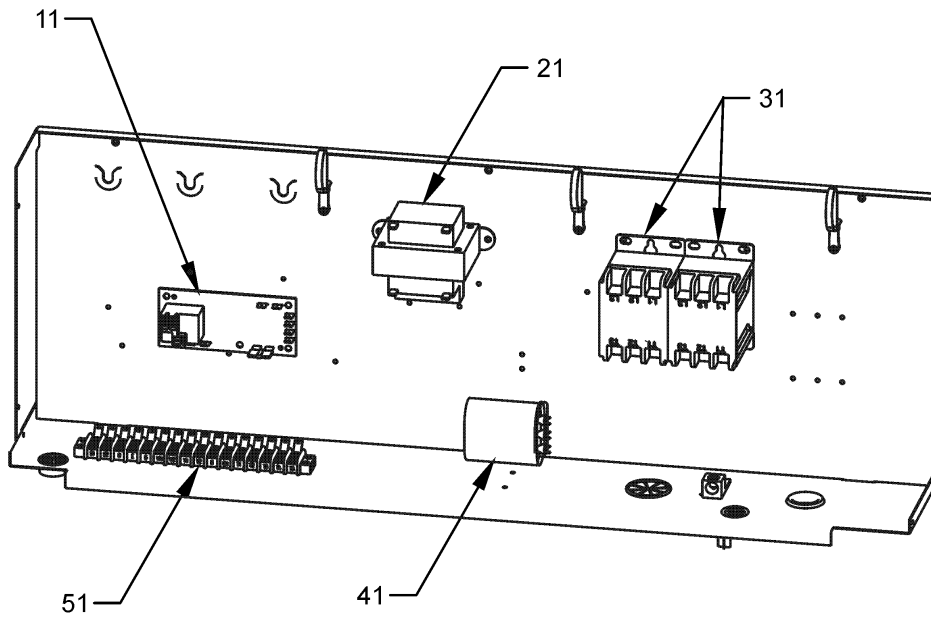
# Belt Drive Assy



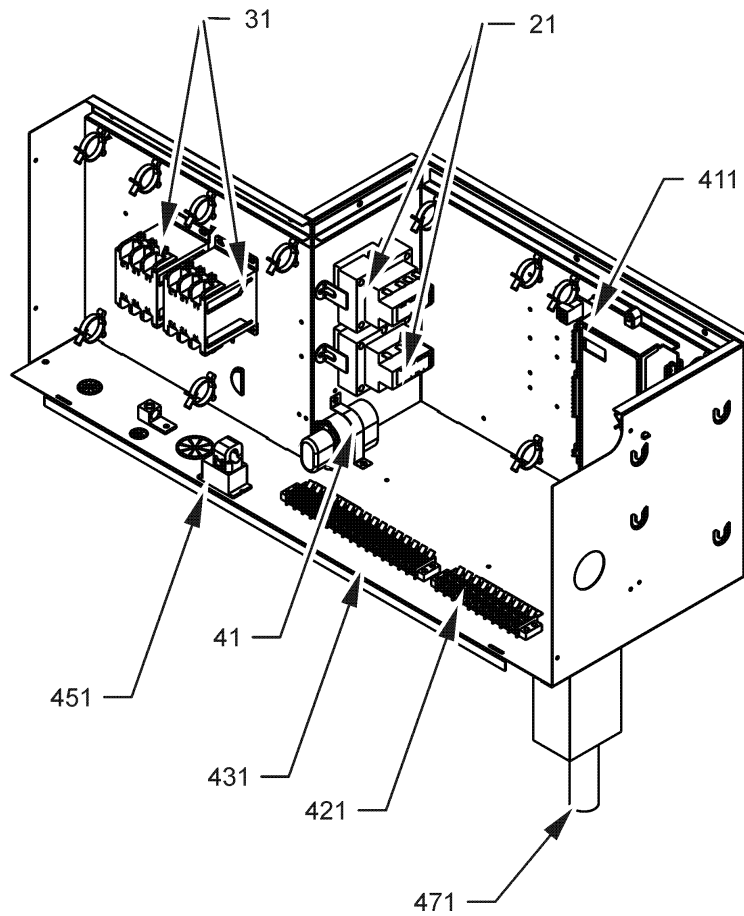
# Belt Drive Assy

Ref. Part No: No:	Description:	Ref. Part No: No:	Description:
<i>Image 1:</i>		<b>Expanded Model Nomenclature</b>	
11	0131L00003 BELT DRIVE MOTOR 1 HP (M1, M2, M3, M4, M5, M6, M7, M8, M9, M10, M11, M12, M13, M14, M18, M19, M20, M21, M22, M23, M24, M25, M26, M27, M28)	M1 - DCC060XXX3BBXXAA	
11	0131L00004 BELT DRIVE MOTOR 1.5 HP 575V (M15, M16, M17)	M2 - DCC060XXX3BXXAA	
21	0121L00297 BLOWER SIDE ANGLE (QTY 3)	M3 - DCC060XXX3BXXAA	
31	0121L00899 MOTOR BASE	M4 - DCC060XXX3BXXAB	
41	0121L00281 BLOWER MOUNTING ANGLE	M5 - DCC060XXX4BAXAAB	
51	0163L00005 BELT DRIVE BLOWER SHAFT	M6 - DCC060XXX4BAXXAB	
61	2539302F BLOWER HOUSING 11 X 10	M7 - DCC060XXX4BBXXAA	
71	B3201300 MOUNTING BRACKET BEARING (QTY 2)	M8 - DCC060XXX4BHXOAC	
81	B1368056 BELT DRIVE BLOWER WHEEL	M9 - DCC060XXX4BHXRAB	
91	0163L00138 SHEAVE, FIXED AK61H	M10 - DCC060XXX4BHXXAB	
101	B1398604 STEEL KEY (000158812) 2.0"	M11 - DCC060XXX4BXXBAB	
111	B1399500 BALL BEARING 1.00" (QTY 2)	M12 - DCC060XXX4BXXAA	
121	0164L00010 FAN BELT, NOTCHED	M13 - DCC060XXX4BXXAB	
131	B2120001 VARIABLE PITCH SHEAVE 1VL44 X 3/8"	M14 - DCC060XXX4BXXAC	
141	0121L01203 BLOWER PLATE SUPPORT	M15 - DCC060XXX7BBXXAA	
151	B1393726 ELECT. CONNECTING BUSHING	M16 - DCC060XXX7BXXAA	
161	B1393738 BOLT 1/4-20 X 3/4" (QTY 8)	M17 - DCC060XXX7BXXAB	
171	0163M00045 BOLT 1/4-20 X 4"	M18 - DCC0600103BHXCAB	
181	3225000F BELT TIGHTENER ANGLE	M19 - DCC0600103BJXFAA	
191	B1393023 NUT / LOCK .25-20	M20 - DCC0600153BHXAAB	
NS	1864703F BLOWER CUT-OFF	M21 - DCC0600154BAXCAC	
NS	B1398603 STEEL KEY (000158812) 4.5"	M22 - DCC0600154BHXFAC	
		M23 - DCC0600154BJDNAC	
		M24 - DCC0600203BHXXAB	
		M25 - DCC0600203BJXFAA	
		M26 - DCC0600204BAXFAB	
		M27 - DCC0600204BHXBAC	
		M28 - DCC0600204BVDXAC	

# Control Box Assy



CONTROL BOX  
FOR MODELS  
WITH DDC CONTROL



# Control Box Assy

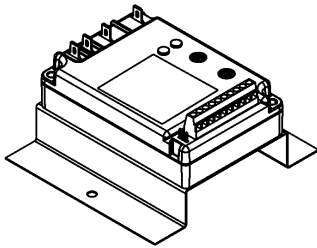
Ref. Part No: No:	Description:	Ref. Part No: No:	Description:
<b>Image 1:</b>		<b>Expanded Model Nomenclature</b>	
11	PCBFM103	ELECTRONIC BLOWER TIME DELAY	M1 - DCC060XXX3BBXXAA
21	0130M00138	TRANSFORMER 208/230, 24V (M1, M2, M3, M4, M18, M19, M20, M24, M25)	M2 - DCC060XXX3BXDXAA
21	0130M00145	TRANSFORMER 480V to 24V, 75VA (M5, M6, M7, M8, M9, M10, M11, M12, M13, M14, M21, M22, M23, M26, M27, M28)	M3 - DCC060XXX3BXXXAA
21	0130M00148	TRANSFORMER 575V to 24V, 75VA (M15, M16, M17)	M4 - DCC060XXX3BXXXAB
31	CONT3P025024V	CONTACTOR 25 AMP, 3P, 24V (M5, M6, M7, M8, M9, M10, M11, M12, M13, M14, M15, M16, M17, M21, M22, M23, M26, M27, M28)	M5 - DCC060XXX4BAXAAB
31	CONT3P030024V	CONTACTOR 30 AMP, 3P, 24V (M1, M2, M3, M4, M18, M19, M20, M24, M25)	M6 - DCC060XXX4BAXXAB
41	CAP030000440LA	CAPACITOR 3/440V (M15, M17)	M7 - DCC060XXX4BBXXAA
41	CAP050000370LA	CAPACITOR 5/370V (M1, M2, M3, M4, M12, M16, M18, M19, M20, M24, M25)	M8 - DCC060XXX4BH XOAC
41	CAP075000370LA	CAPACITOR 7.5/370V (M5, M6, M7, M8, M9, M10, M11, M13, M14, M21, M22, M23, M26, M27, M28)	M9 - DCC060XXX4BHXRAB
51	0130M00038	TERMINAL BOARD	M10 - DCC060XXX4BHXXAB
411	PCBCG100	DDC Controller (M1, M7, M15)	M11 - DCC060XXX4BXXBAB
421	0130M00274	TERMINAL BOARD (M1, M7, M15)	M12 - DCC060XXX4BXXXAA
431	0130M00275	TERMINAL BOARD (M1, M7, M15)	M13 - DCC060XXX4BXXXAB
451	0259L00368	CURRENT SWITCH W/TERMS (M1, M7, M15)	M14 - DCC060XXX4BXXXAC
471	0130L00108	OD Air Temp Sensor (M1, M7, M15)	M15 - DCC060XXX7BBXXAA
NS	B821700	CAPACITOR BOOT (M1, M7, M15)	M16 - DCC060XXX7BXXXAA
NS	20520901	CAPACITOR STRAP (QTY 4)	M17 - DCC060XXX7BXXXAB
NS	0130L00112	Duct Temp Sensor (M1, M7, M15)	M18 - DCC0600103BH XCAA
NS	0259L00178	HARNESS, ECONOMIZER	M19 - DCC0600103BJXF AA
NS	0259L00092	HARNESS-SMOKE DETECTOR SENSOR (M8)	M20 - DCC0600153BH XAAB
NS	0259L00090	WIRE HARNESS-SMOKE DETECTOR (M8, M9)	M21 - DCC0600154BAXC AC
NS	0259L00054	WIRING HARNESS (M1, M2, M3, M4, M7, M15, M16, M17, M18, M19, M20, M24, M25)	M22 - DCC0600154BH XFAC
NS	0259L00060	WIRING HARNESS (M5, M6, M7, M8, M9, M10, M11, M12, M13, M14, M21, M22, M23, M26, M27, M28)	M23 - DCC0600154BJD NAC
NS	0259L00061	WIRING HARNESS	M24 - DCC0600203BH XXAB
NS	0259L00064	WIRING HARNESS	M25 - DCC0600203BJX FAA
NS	0259L00065	WIRING HARNESS	M26 - DCC0600204BAX FAB
			M27 - DCC0600204BH XBAC
			M28 - DCC0600204BVD XAC

# Accessory Parts List

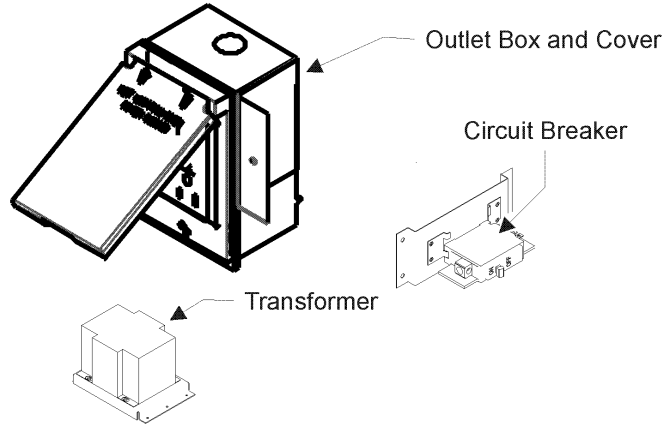
## ACCESSORY PARTS LIST

NOTE: NOT ALL OPTIONS AVAILABLE FOR ALL PRODUCTS

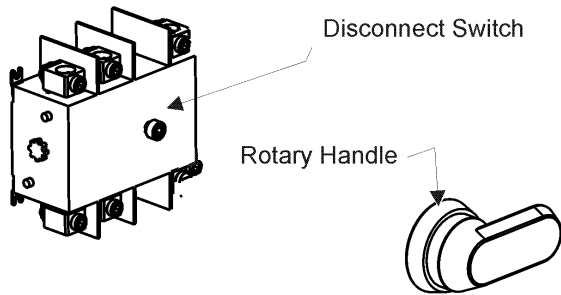
### LOW AMBIENT KITS



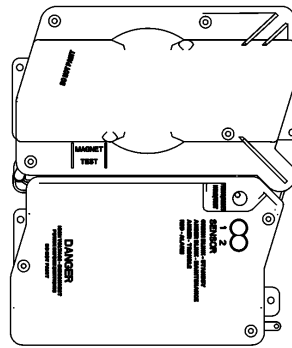
### GFCI CONVENIENCE OUTLET



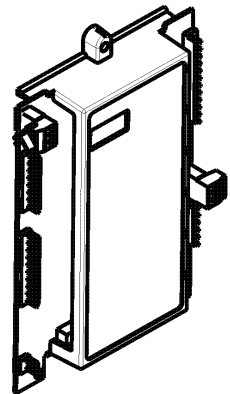
### DISCONNECT MODULE (NON-FUSED)



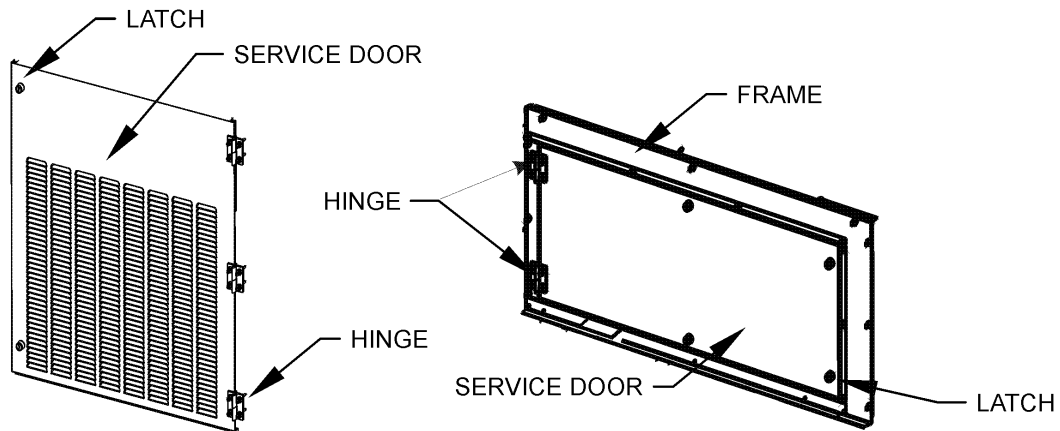
### SMOKE DETECTORS



### DDC CONTROL



### HINGED DOOR ASSEMBLIES



# Accessory Parts List

Ref. Part No: No:	Description:	Ref. Part No: No:	Description:
<b>Image 1:</b>		<b>Expanded Model Nomenclature</b>	
NS 0121L01373NG	BLOWER DOOR FRAME (M2, M23, M28)	M1 - DCC060XXX3BBXXAA	
NS 0121L01371NG	BLOWER SERVICE DOOR, BACK (M2, M23, M28)	M2 - DCC060XXX3BXDXAA	
NS 0121L01370NG	BLOWER SERVICE DOOR, FRONT (M2, M23, M28)	M3 - DCC060XXX3BXXXAA	
NS 0121L00316	BRACKET-CONV OUTLET MOUNT (M5, M8, M9, M11, M19, M20, M22, M23, M25, M26, M27)	M4 - DCC060XXX3BXXXAB	
NS 0121L00835	BRACKET-DISCONNECT SW (M8, M9, M10, M18, M20, M22, M23, M27)	M5 - DCC060XXX4BAXAAB	
NS 0121L00332	BRACKET-SMOKE DETECTOR (M8, M9, M23)	M6 - DCC060XXX4BAXXAB	
NS 0130M00065	CIRCUIT BREAKER, CONVENIENCE OUTLET (M8, M9, M11, M23, M27)	M7 - DCC060XXX4BBXXAA	
NS 0121L00837NG	DISCONNECT COVER (M8, M9, M10, M18, M19, M20, M22, M23, M24, M25, M27)	M8 - DCC060XXX4BHXOAC	
NS 0130L00012	GANG BOX-GFCI OUTLET (M5, M8, M9, M11, M19, M20, M22, M23, M25, M26, M27)	M9 - DCC060XXX4BHXRAB	
NS 0130L00039	HANDLE, ROTARY (M8, M9, M10, M18, M20, M22, M23, M27)	M10 - DCC060XXX4BHXXAB	
NS 0163M00307	HINGE, LEFT HAND (M2, M23, M28)	M11 - DCC060XXX4BXXBAB	
NS 0163M00308	HINGE, RIGHT HAND (M2, M23, M28)	M12 - DCC060XXX4BXXXAA	
NS 0163M00322	LATCH (M2, M23, M28)	M13 - DCC060XXX4BXXXAB	
NS 0121L01327NG	LOUVERED CP SERVICE DOOR (M2, M23, M28)	M14 - DCC060XXX4BXXXAC	
NS LAKT01	LOW AMBIENT KIT (M9, M18, M19, M21, M22, M25, M26)	M15 - DCC060XXX7BBXXAA	
NS 0161G00012	POWER OUTLET BOX (M5, M8, M9, M11, M19, M20, M22, M23, M25, M26, M27)	M16 - DCC060XXX7BXXXAA	
NS 0130L00103	RECEPTACLE-GFCI OUTLET (M5, M8, M9, M11, M19, M20, M22, M23, M25, M26, M27)	M17 - DCC060XXX7BXXXAB	
NS 0130L00042	SHAFT, CUT (M8, M9, M10, M18, M20, M22, M23, M27)	M18 - DCC0600103BHXCAA	
NS 0130L00049	SHAFT, DISCONNECT (M8, M9, M10, M18, M19, M20, M22, M23, M24, M25, M27)	M19 - DCC0600103BJXFAA	
NS D4120	SMOKE DETECTOR, PHOTO 4WIRE (M8, M9, M23)	M20 - DCC0600153BHXAAB	
NS D4S	SMOKE DETECTOR, SENSOR ONLY (M8)	M21 - DCC0600154BAXCAC	
NS 0130L00027	SWITCH-DISCONNECT 100A (M19, M24, M25)	M22 - DCC0600154BHXFAC	
NS 0130L00046	SWITCH-DISCONNECT 60A (M8, M9, M10, M18, M20, M22, M23, M27)	M23 - DCC0600154BJDNAC	
NS 0130M00061	TRANSFORMER, CONVENIENCE OUTLET (M8, M9, M11, M23, M27)	M24 - DCC0600203BHXXAB	
		M25 - DCC0600203BJXFAA	
		M26 - DCC0600204BAXFAB	
		M27 - DCC0600204BHXBAC	
		M28 - DCC0600204BVDXAC	