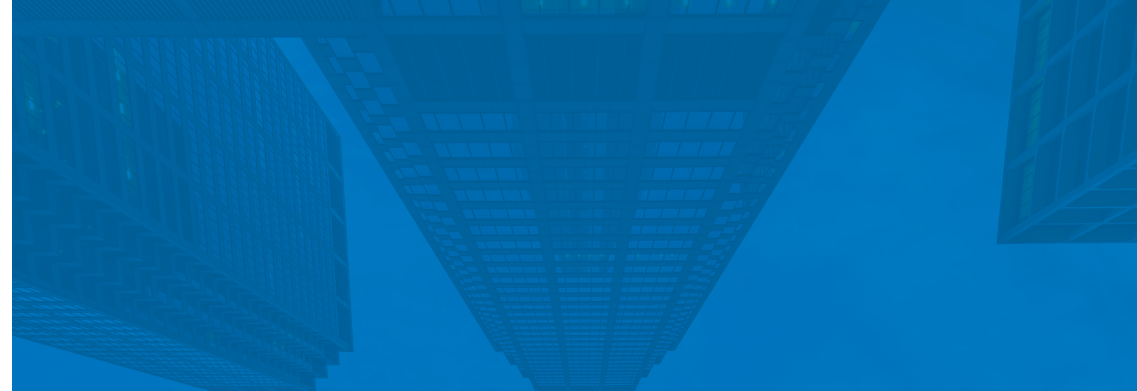


# Sure-Lites

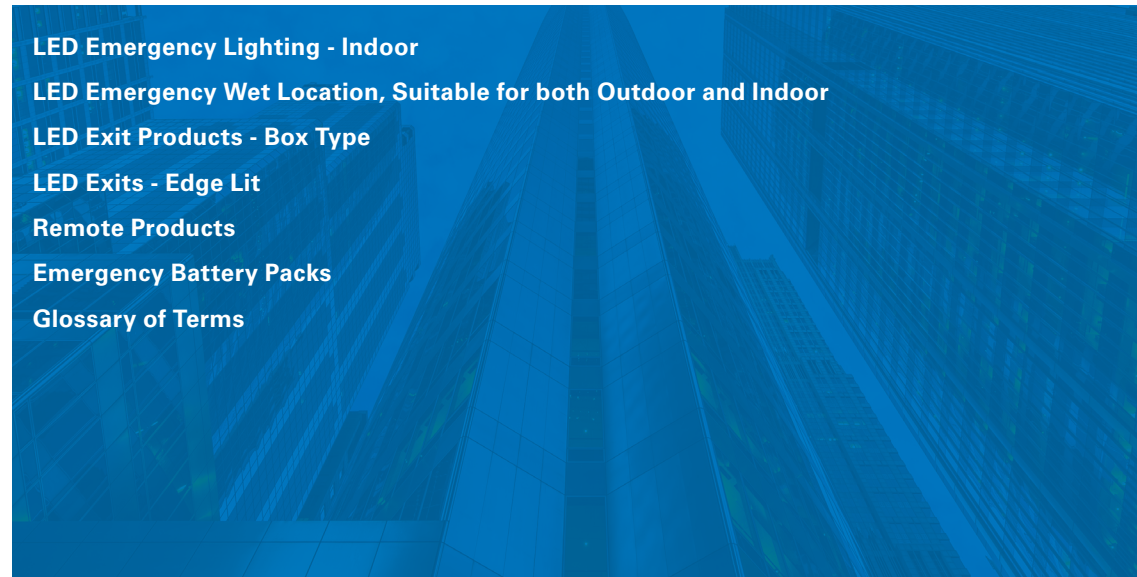
Sure-Lites has been the trusted name and industry leader for emergency and exit lighting for over 30 years. Sure-Lites offers a full line of innovative emergency and exit lighting products designed for commercial, industrial, hospitality, healthcare, educational and multi-housing residential spaces.

Sure-Lites products are designed to meet and exceed today's building codes. Our products offer maximum reliability and performance while minimizing installation and maintenance costs. From ease of installation to performance-enhancing electronics to time-saving features, Sure-Lites is focused on advancing technology to develop the most effective emergency and exit lighting solutions.



**The product selection guides are simple yet powerful tools to help assist with product comparisons and selection based on features, performance and value.**

- 2 LED Emergency Lighting - Indoor
- 3 LED Emergency Wet Location, Suitable for both Outdoor and Indoor
- 4 LED Exit Products - Box Type
- 5 LED Exits - Edge Lit
- 6 Remote Products
- 7 Emergency Battery Packs
- 8 Glossary of Terms



## Good

## Better

## Best

Click on products to learn more

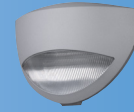


	APELMINI	APEL	AP2SQLED30	SEL	XR6C-LED	SELM	SELHP100R3	SELMREC	SELRA50	SELA	SELMTG
<b>Material</b>	Polycarbonate	Polycarbonate	Thermoplastic	Polycarbonate	Sheet Metal	Sheet Metal	Thermoplastic	Sheet Metal	Thermoplastic	Polycarbonate	Sheet metal
<b>Color</b>	White	White or Black	White	White or Black	White	White	White	White or Black	White	White or Black	White or Black
<b>Mounting</b>	Surface	Surface	Surface	Surface	Surface	Surface	Surface	Recessed wall or ceiling	Recessed ceiling	Recessed wall mount	Recessed T-grid mount
<b>Coverage</b>	17 feet	17 feet	30 feet	17/25/50/60 feet	2 x 300 lumen heads	25/50/60/80 feet	100 feet	25 or 60 feet	50 feet	29 feet	60 feet
<b>Battery</b>	Nickel cadmium	Nickel cadmium	Nickel cadmium	Nickel cadmium	Nickel cadmium	Nickel cadmium	LiFePO4	Nickel cadmium	Nickel cadmium	Nickel cadmium	Nickel cadmium
<b>Remote Capability</b>	No	✓ (Option)	No	✓ (Option) 4 to 16 watts	No	4 to 16 watts	3 watts	4 to 10 watts	NiMH	No	5 watts
<b>Temp Range</b>	10° C to 40° C	10° C to 40° C	10° C to 40° C	0° C to 40° C	0° C to 40° C	0° C to 40° C	0° C to 50° C	0° C to 40° C	10° C to 40° C	0° C to 40° C	0° C to 40° C
<b>Self-Diagnostics</b>	No	No	No	✓ (Option)	No	✓ (Standard)	✓ (Option)	✓ (Standard)	✓ (Option)	✓ (Standard)	✓ (Standard)
<b>EZ Key Battery Disconnect</b>	No	No	No	✓ (with SD Models)	✓ (Standard)	✓ (Standard)	No	No	No	✓ (Standard)	✓ (Standard)
<b>Laser Test</b>	No	No	No	✓ (with SD Models)	No	✓ (Standard)	No	✓ (Standard)	No	✓ (Standard)	✓ (Standard)
<b>UL Rating</b>	UL 924 Damp	UL 924 Damp	UL 924 Damp	UL 924 Damp	UL 924 Damp	UL 924 Damp	UL 924 Damp	UL 924 Damp	UL 924 Damp	UL 924 Damp	UL 924 Damp
<b>Normally On</b>	No	No	No	No	No	No	No	No	No	No	No
<b>City of Chicago Compliant</b>	No	No	No	No	✓ (Standard)	✓ (Standard)	No	✓ (Standard)	No	No	✓ (Standard)
<b>Availability</b>	Stock	Stock	Stock	Stock	Stock	Stock	Stock	Stock	Stock	Stock	Stock
<b>Other</b>							<ul style="list-style-type: none"> <li>Ideal for ceiling or wall mount</li> <li>3 Watt remote capacity allows up to 130 feet egress coverage</li> </ul>		<ul style="list-style-type: none"> <li>Architectural Fixture</li> <li>Round and rectangular trims provided for design flexibility</li> </ul>	<ul style="list-style-type: none"> <li>Architectural Fixture</li> <li>Three shrouds available, "barrel" accepts wall treatment for fixture to blend into space</li> </ul>	<ul style="list-style-type: none"> <li>Architectural, recessed T-grid mount</li> </ul>

**Good**

**Better**

**Best**



Click on products to learn more

	SELW	SELDWA	SELDWA50PS	AEL2	SELIN60SD	SELD
<b>Material</b>	Polycarbonate	Die cast AL	Die cast AL	Die Cast AL	Fiberglass	Die Cast AL
<b>Color</b>	Ag/BK/WH/BZ	Ag/BK/WH/BZ	Ag/BK/WH/BZ	Ag/BK/WH/BZ	Grey	Ag/BK/WH
<b>Mounting</b>	Surface	Surface, Mullion Mount option	Surface	Surface	Surface	Surface
<b>Coverage</b>	25 feet	29 or 50 feet	29 or 50 feet	25 feet	25/50/60 feet	60 feet
<b>Battery</b>	Nickel cadmium	Nickel cadmium	Nickel cadmium	Nickel cadmium	Nickel cadmium	Nickel cadmium
<b>Remote Capability</b>	No	No	No	No	4 to 10 watts	No
<b>Temp Range</b>	0° C to 40° C / -20° C to 55° C	0° C to 40° C / -20° C to 55° C	0° C to 40° C / -30° C to 40° C	-30° C to 55° C	0° C to 40° C	-30° C to 50° C
<b>Self-Diagnostics</b>	No	✓ (Standard)	✓ (Standard)	✓ (Standard)	✓ (Standard)	✓ (Standard)
<b>EZ Key Battery Disconnect</b>	No	No	No	No	No	No
<b>Laser Test</b>	No	No	No	No	✓ (Standard)	✓ (Standard)
<b>UL Rating</b>	UL 924 Wet	UL 924 Wet	UL 924 Wet	UL 924 Wet	UL 924 Wet, NEMA 4X	UL 924 Wet, NEMA 4X, HAZ option
<b>Normally On</b>	No	No	✓ (Standard)	✓ (Standard)	No	No
<b>City of Chicago Compliant</b>	No	✓ (Standard)	✓ (Standard)	✓ (Standard)	No	✓ (Standard)
<b>Availability</b>	Stock	Stock	Stock	Stock	Stock	Stock
<b>Other</b>			<ul style="list-style-type: none"> <li>Architectural Look</li> <li>A/C on functionality: Dusk-to-dawn, switched on, always on, always off</li> </ul>	<ul style="list-style-type: none"> <li>Architectural Look</li> <li>A/C on functionality: Switched on, always on, always off</li> </ul>		








Good

Better

Best



Click on products to learn more

	APX	APC	LPX	LPXC	SLX	TPX	CX	LPXW	CHX	CHXC	PHL	UX HAZ UX NEMA 4X
<b>Type</b>	Box	Combo	Box	Combo	Box	Thin Profile/Box	Box	Box	Box	Combo	Thin Profile/Box	Box
<b>Material</b>	Thermoplastic	Thermoplastic	Polycarbonate	Polycarbonate	Steel	Die Cast AL	Die Cast	Polycarbonate	Steel	Steel	Aluminum	Die Cast AL
<b>Mounting</b>	Surface	Surface	Surface	Surface	Surface	Surface	Surface	Surface	Surface	Surface	Surface	Surface
<b>Faces</b>	Field Selectable	Field Selectable	Field Selectable	Field Selectable	Field Selectable	One or Two	Field Selectable	One or Two	One or Two	One or Two	One or Two	One or Two
<b>Letter Color</b>	Red or Green or 	Red or Green or 	Field Selectable 	Field Selectable 	Field Selectable 	Red or Green	Field Selectable 	Red or Green	Red	Red	Outline: Red or Green	
<b>Housing Color</b>	WH, BK	WH, BK	WH, BK	WH, BK	White	AL, WH, BK	AL, WH, BK	AL, WH, BK	White	White	Aluminum	AL, WH, BK
<b>Fire Alarm Interface</b>	No	No	No	No	No	No	✓ (Option)	No	No	No	No	No
<b>2nd Circuit (A/C Only)</b>	✓ (2C/2 Hot Option)	No	✓ (Option)	No	✓ (Option)	No	✓ (Option)	No	No	No	No	✓ (Option)
<b>Battery (In Self-Powered Models)</b>	Nickel Cadmium	Nickel Cadmium	Nickel Cadmium	Nickel Cadmium	Nickel Cadmium	Nickel Cadmium	Nickel Cadmium	Nickel Cadmium	Nickel Cadmium	Nickel Cadmium	No	Nickel Cadmium
<b>Self-Diagnostics</b>	No	No	✓ (Option)	✓ (Option)	✓ (Standard)	No	✓ (Option)	✓ (Standard)	No	No	No	✓ (Standard)
<b>Laser Test Capability</b>	No	No	✓ (SD Models)	✓ (SD, Remote Models)	No	No	✓ (SD Models)	No	No	No	No	✓ (Standard)
<b>EZ Key Battery Disconnect</b>	No	No	✓ (SD Models)	SD Models	✓ (Standard)	No	✓ (SD Models)	No	✓ (Standard)	✓ (Standard)	No	No
<b>Remote Capability</b>	✓ (Option)	✓ (Option)	✓ (Option)	✓ (Option)	No	No	No	No	No	No	No	No
<b>UL Rating</b>	UL 924 Damp	UL 924 Damp	UL 924 Damp	UL 924 Damp	UL 924 Damp	UL 924 Damp	UL 924 Damp	UL 924 Wet	UL 924 Damp	UL 924 Listed	UL 924 Listed	UL 924 Wet, NEMA4X/HAZ
<b>City of Chicago Compliant</b>	No	No	No	No	No	No	No	No	Yes	✓ (Standard)	No	No
<b>Availability</b>	Stock	Stock	Stock	Stock	Stock	Stock	Stock	Stock	Stock	Stock	Stock	Stock
<b>Other</b>	Contact factory for "2nd Circuit/2 Hot" models SALIDA face version available	17 feet of egress coverage SALIDA face version available		25 or 50 feet of egress coverage	Signage options available	Suitable for floor proximity	Signage options available	Standard		• 2 x 300 lumen heads/60 feet egress coverage • "Stair" signage available	Photoluminescent "Glow-in-the-Dark" yields 90 minutes of illumination	

Good

Better

Best



Click on products to learn more

	APXEL	ECHX	SCX	EU	EUX	ARCEL	ES	ELX
<b>Housing Material</b>	Polycarbonate	Aluminum	Aluminum	Aluminum	Aluminum	Aluminum	Aluminum	Aluminum
<b>Mounting</b>	Surface	Universal	Universal	Surface / Recessed	Universal	Surface / Recessed	Surface / Recessed	Recessed
<b>Pendant / Mullion Mount</b>	No	No	No	✓ (Pendant)	✓ (Pendant, Mullion)	✓ (Pendant, Mullion)	✓ (Pendant, Mullion)	No
<b>Faces</b>	One or Two	One or Two	Universal	Universal	Universal	One or Two	One or Two	One or Two
<b>Letter Color</b>	Red or Green	Red Only	Red or Green	Red or Green	Red or Green	Red or Green	Red or Green	Red or Green
<b>Lens Panel Color</b>	White	White	1 Face Clear 2 Faces Mirror	1 Face Clear 2 Faces Mirror	Field Configurable: Clear, White, Mirror	Clear, White or Mirror	Clear, White or Mirror	Clear, White or Mirror
<b>Chevron / Arrows</b>	Field Selectable	Factory Install	Field Selectable	Field Selectable	Field Selectable	Field Selectable	Factory Install	Factory Install
<b>Housing Color</b>	White	AL, WH	AL	AL	AL, WH, BK	AL, WH, BK*	AL, WH, BK, BZ, PA	AL, WH, BK
<b>Custom Color Available</b>	No	No	No	No	No	No	Contact Factory	No
<b>Fire Alarm Interface</b>	No	No	No	No	No	✓ (Standard)	No	No
<b>2nd Circuit (A/C Only)</b>	No	No	No	✓ (2C/2 Hot Option)	✓ (Option)	No	No	✓ (Option)
<b>Battery</b>	Nickel Cadmium	Nickel Cadmium	Nickel Cadmium	Nickel Cadmium	Nickel Cadmium	Nickel Cadmium	Nickel Cadmium	Nickel Cadmium
<b>Self-Diagnostics</b>	No	No	No	No	✓ (Option)	✓ (Standard)	No	No
<b>EZ Key Battery Disconnect</b>	No	No	No	No	✓ (Standard)	✓ (Standard)	No	No
<b>Laser Test Capability</b>	No	No	No	No	No	✓ (Standard)	No	No
<b>UL Rating</b>	UL924 Damp	UL924 Damp	UL924 Damp	UL924 Damp	UL924 Damp	UL924 Damp	UL924	UL924
<b>City of Chicago Compliant</b>	No	✓ (Standard)	No	No	No	No	No	No
<b>Availability</b>	Stock	Stock	Stock	Stock	Stock	Stock/*MTO Black	MTO	MTO
<b>Benefits</b>	<ul style="list-style-type: none"> <li>Value edge lit exit</li> <li>In Stock</li> <li>Self-adhesive field selectable chevrons = no ordering mistakes</li> </ul>	<ul style="list-style-type: none"> <li>City of Chicago Compliant</li> <li>Easy Ordering Process</li> <li>In Stock</li> </ul>	<ul style="list-style-type: none"> <li>Value edge lit exit</li> <li>Universal surface mounting and recessed mounting in one box</li> <li>Universal Faces</li> <li>In Stock</li> <li>Self-adhesive field selectable chevrons = no ordering mistakes</li> </ul>	<ul style="list-style-type: none"> <li>Better Aesthetics</li> <li>Universal Faces</li> <li>Self-adhesive field selectable chevrons = no ordering mistakes</li> <li>Contact factory for "2nd Circuit / 2 Hot" models</li> </ul>	<ul style="list-style-type: none"> <li>Better Aesthetics</li> <li>Universal Faces</li> <li>Self-adhesive field selectable chevrons = no ordering mistakes</li> <li>Labor savings self-diagnostics option</li> </ul>	<ul style="list-style-type: none"> <li>Best Aesthetics</li> <li>Slim profile, no visible screws</li> <li>Multiple mounting options + square or round canopy for custom look</li> <li>Self-adhesive field selectable chevrons = no ordering mistakes</li> <li>Labor savings self-diagnostics standard</li> <li>Stocked product = faster time to site</li> </ul>	<ul style="list-style-type: none"> <li>Best Aesthetics</li> <li>Multiple mounting options</li> <li>Factory install chevrons for custom look</li> <li>MTO</li> <li>BAA Compliant</li> </ul>	<ul style="list-style-type: none"> <li>Best Aesthetics</li> <li>Recessed ceiling, wall, end mount</li> <li>Recessed mounting box for rough-in / new construction</li> <li>Factory install chevrons for custom look</li> <li>MTO</li> </ul>

Good

Better

Best

Click on products to learn more



	APWR	SRP	SRM	SRPA
<b>Material</b>	Plastic	Polycarbonate	Sheet Metal	Polycarbonate
<b>Source</b>	LED	LED	LED	LED
<b>Number of heads</b>	1 or 2	1 or 2	1 or 2	2
<b>Adjustable</b>	✓ (Standard)	✓ (Standard)	✓ (Standard)	✓ (with forward throw)
<b>Coverage</b>	15 feet	13 to 60 feet	13 to 60 feet	29 feet
<b>Voltage input</b>	3.6 volts	4.8 through 12 volts	4.8 through 12 volts	4.8 through 6 volt
<b>Color</b>	White, Black	White, Black, Grey	White, Black, Grey	White, Black, Silver, Grey
<b>Temp Range</b>	0° C to 40° C	-30° C to 60° C	-30° C to 60° C	-30° C to 55° C
<b>UL Rating</b>	Wet location	Wet Location	Wet Location	Wet Location
<b>Availability</b>	Stock	Stock	Stock	Stock
<b>Compatibility</b>	Compatible with: All-Pro remote capable exits, combo & emergency lights	Compatible with: Sure-lites remote capable exits, combo and emergency lights	Compatible with: Sure-lites remote capable exits, combo and emergency lights	Compatible with: Sure-lites remote capable exits, combo and emergency lights

Wattage Output

Click on products to learn more



	EBPLEDL7W	EBPLED-7.5WSD	EBPLEDLP-10WSD	EBPLEDL14W	EBPLEDC1LV-20W	EBPLEDC1HV-20W
<b>Fixture Compatibility</b>	LED	LED	LED	LED	LED	LED
<b>Input Voltage</b>	120/277 VAC	120/277 VAC	120/277 VAC	120/277 VAC	120/277 VAC	120/277 VAC
<b>Power Output</b>	7W	7.5W	10W	14W	20W	20W
<b>Output Voltage</b>	8VDC to 55VDC	15VDC to 50VDC	8VDC to 52VDC	16VDC to 55VDC	20VDC to 50VDC	125VDC to 200VDC
<b>Battery</b>	LiFePO <sub>4</sub>	NiCad	NiCad	LiFePO <sub>4</sub>	NiCad	NiCad
<b>Self-Diagnostics</b>	No	✓ (Standard)	✓ (Standard)	No	No	No
<b>Battery Disconnect</b>	✓ (Standard)	No	No	✓ (Standard)	No	No
<b>Temp Range</b>	0°C to 55°C	0°C to 55°C	0°C to 55°C	0°C to 55°C	0°C to 55°C	0°C to 55°C
<b>UL Rating</b>	Field <sup>1</sup>	Factory or Field Install	Factory or Field Install	Field <sup>1</sup>	Factory or Field Install	Factory or Field Install
<b>Availability</b>	Stock	Stock	Stock	Stock	Stock	Stock

Notes: 1. Model EL7W and EL14W for factory install.

### General Exit and Emergency Lighting Equipment:

**Normally On:** A/C on functionality of the exit and emergency fixture, allowing it to be both a standard fixture and an emergency light fixture.

**Battery:** Type of battery in exit and emergency fixture that provides at least 90 minutes of emergency power per NFPA 101.

**Coverage or Egress Coverage:** Length of 3-foot wide egress path which exit and emergency fixture provides the NFPA required illumination of 1 foot-candle average with minimum of 0.1 foot-candle and no more than 40:1 max to min uniformity ratio.

**EZ Key Battery Disconnect:** Sure-Lites patented method of preventing battery from discharging while not connected to A/C power.

**Laser Test Capability:** Activation of the photocell test button with a laser pointer will simulate loss of AC power and engage the emergency operation of the exit and emergency fixture.

**Remote capability:** Exit and emergency lighting equipment that has the feature of being able to power remote light heads.

**Self-diagnostics, "SD", or self-testing:** NFPA and local codes require monthly and yearly testing of exit and emergency lighting equipment. Fixtures that are self-diagnostic, or self-testing, have internal software that automatically conducts monthly and yearly tests, helping save with labor costs. If any issue is found, Sure-Lites self-diagnostic features will flash a fault code on the test button.

**Source:** Light source, such as LED, incandescent, fluorescent, or HID.

**UL 924:** Standard for Emergency Lighting Equipment and Power Equipment.

**UL Rating:** The UL 924 environmental rating of the exit and emergency fixture. The fixture may be UL 924 Listed, UL 924 Damp Location Listed or UL 924 Wet Location Listed. UL 924 Wet location listed fixtures are suitable for exterior or outdoor use.

### Exit Sign Specific Terms:

**2nd Circuit or 2C:** Two-circuit input for A/C only exit signs which allows a primary power source and auxiliary power source to be connected to the exit sign. Auxiliary power sources may be generators, inverters or alternate backup systems. Note: Most 2nd Circuits are not designed for both input power sources to be hot at the same time.

- For city building codes which require two hot circuits (ie., Los Angeles) – contact your Cooper Lighting Sales Representative for made to order options.

**Chevron / Arrows:** Directional indicators on Exit Sign:

- Field Selectable: Chevrons/arrows can be configured in field.
- Factory install: Chevrons/arrows are applied in the factory.

**Faces:** Number of faces provided with exit fixture.

- Field Selectable: Fixture can be field configured for 1 or 2 faces.

**Fire Alarm Interface (FAI) for Exit Signs:** Optional electrical connection between exit fixture to the building fire alarm system. The Fire Alarm Interface will cause the exit sign to blink, drawing attention to the exit when the alarm is initiated.

**Letter Colors:** Color of "EXIT" text.

- Field Selectable or Field Configurable: Fixture can be configured to have Red or Green letters in the field.

**Mounting:** How fixture can be mounted to wall or ceiling.

- Recessed: Electronics are recessed into ceiling or wall. Recessed fixtures are normally provided with a box, hangar bars or other method to support the fixture.
- Surface mount: Fixture is mounted to a j-box.
- Universal mount: Fixture may be both recessed and surface mounted.

**Self-powered:** Exit sign has a battery backup that will provide 90 minutes of emergency power when A/C power is lost.