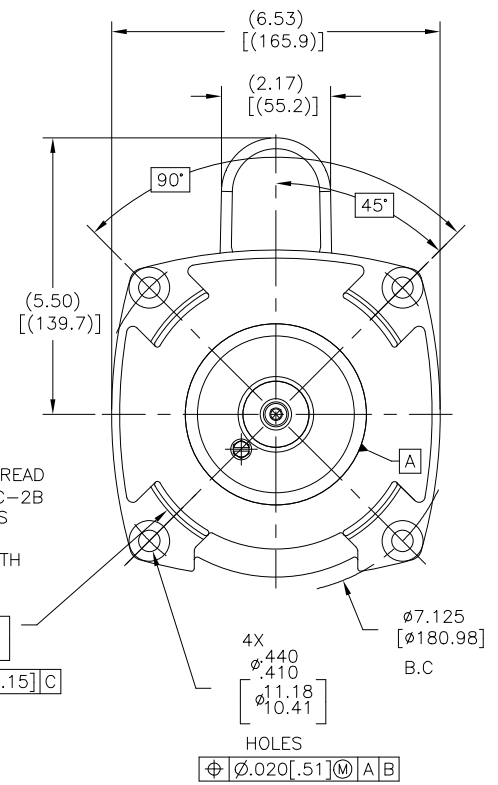
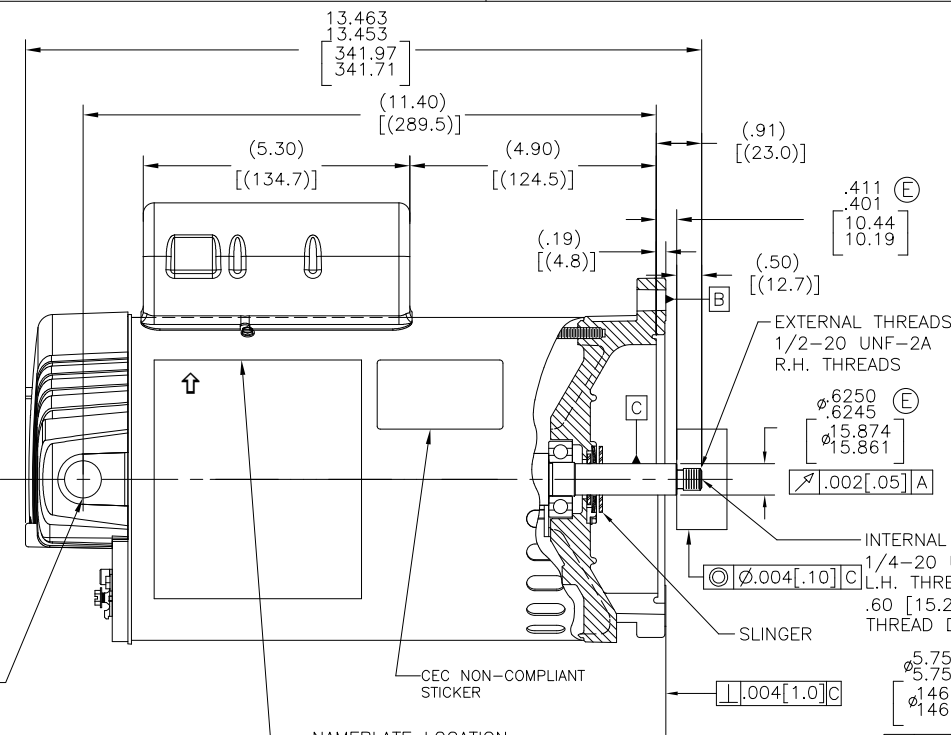


BONDING LUG  
1/2-14 N.P.S.M. WITH CAP



NAMEPLATE DATA	EXTERNAL CONNECTION DIAGRAM	NOTES
MODEL: F56AC14A01 CUST PN: B2855 HP: 2.0 SF: 1.10 ROT: CCWPE RPM: 3450 TYPE: CX CODE: NA FORM: - FRAME: 56 Y VOLTS: 230 AMPS: - MAX AMPS: - SF AMPS: 10.0 PH: 1 HZ: 60 INS: B AMB: 50 °C DUTY: CONT ENCLOSURE: ODP THERMALLY PROTECTED		<ol style="list-style-type: none"> <li>FOR THREADED SHAFT EXTENSION ECCENTRICITY OF THREADED PORTION OF SHAFT IS HELD WITHIN .004[.10] TOTAL GAGE READING WITH THE INDICATOR ON O.D. OF GROUND RING GAGE AS SHOWN. THE GAGE BEING STATIONARY WITH RESPECT TO THE ROTOR.</li> <li>END PLAY NOT TO EXCEED .010[.25] MEASURED WITH NO THRUST.</li> <li>FINISH PAINT TO BE BLACK.</li> <li>REFERENCE MODEL: B2855</li> <li>CTQ REQUIREMENT SEE EP000105-008</li> <li>RoHS &amp; REACH REQUIREMENT SEE EP000014.</li> </ol>

PERFORMANCE CURVE	APPROVED SAMPLE		
18014301	--		
UL COMPONENT	CSA		
FILE#	CCN#	FILE#	GUIDE#
PENDING	PENDING	PENDING	PENDING
CUSTOMER	DSITRIBUTION		

CRITICAL TO QUALITY CHARACTERISTICS (CTQs) (P) PROCESS (E) ENGINEERING (A) APPLICATION (R) REGULATORY (L) LIFE	DRAWING REVISION D ECO APPROVED BY ECR-0216843 ECO DESCRIPTION SEE ECR	REVISION BY HAIXIA ZHANG DATE 04-09-2022 APPROVED BY TRISTIA ZHAO DATE 04-09-2022	TOLERANCES UNLESS OTHERWISE SPECIFIED DEC. INCH mm ANGLE .X ±0.1 [±3] °0.5 .XX ±0.02 [±0.5] .XXX ±0.005 [±0.13] .XXXX ±0.0005 [±0.013] REMOVE BURRS & BREAK SHARP EDGES .003/.015 [08.38] CORNER FILLETS .02 [5] MACHINED SURFACES 12/ INCH mm 3/2 mm SHOWN IN [BRACKETS]	DRAWN BY: FANG ZHANG DATE: 04-19-2019 APPROVED BY: KEFU SHI DATE: 04-19-2019 REFERENCE:	
	COPYRIGHT REGAL BELOIT AMERICA, INC. ALL RIGHTS RESERVED. PROPRIETARY AND CONFIDENTIAL INFORMATION - THIS DOCUMENT IS THE PROPERTY OF REGAL BELOIT AMERICA, INC. (OWNER) AND COMPANY OWNER'S PROPRIETARY INFORMATION. ANY REPRODUCTION OR OTHER ENTITY, DUPLICATION, AND/OR USE, EXCEPT BY RECEIVING IT, TO AGREE THAT IT, AND/OR ANY PART OF IT, SHALL NOT BE DISCLOSED TO ANY PERSON, CORPORATION OR OTHER ENTITY, DUPLICATED, AND/OR USED, EXCEPT AS EXPRESSLY APPROVED IN WRITING IN ADVANCE BY OWNER. THIS DOCUMENT SHALL BE RETURNED TO OWNER UPON REQUEST. IT MAY BE SUBJECT TO CERTAIN RESTRICTIONS UNDER APPLICABLE EXPORT CONTROL LAWS AND REGULATIONS.		DESCRIPTION: MODEL-PFHP-56FR OUTLINE MATERIAL: _____ PROCESS/FINISH: _____ SIZE: C DWG NO: B2855 SHEET: 1		