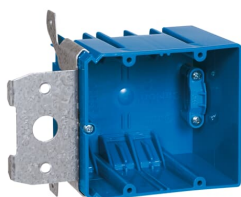


PRODUCT-DETAILS

# B234ADJC

## 2 GANG ADJ ELEC BOX W/SIDE CLAMP



### General Information

Extended Product Type	B234ADJC
Product ID	7TAA040150R0005
EAN	0034481177029
Catalog Description	2 GANG ADJ ELEC BOX W/SIDE CLAMP
Long Description	Two-Gang Adjustable New Work Outlet Box, Volume 34 Cubic Inches, Length 4 Inches, Width 3-5/8 Inches, Depth 3 Inches, Color Blue, Material PVC, Mounting Means Adjustable Bracket, with Large 220V Knockout

### Ordering

EAN	0034481177029
UPC	034481177029
Country of Origin	United States (US)
Customs Tariff Number	3926909985
Selling Unit of Measure	each

### Container Information

Package Level 1 Units	16 piece
Package Level 1 Width	10 in 254 mm
Package Level 1 Height	11.6 in 295 mm
Package Level 1 Depth /	14.3 in

Length	363 mm
Package Level 2 Units	768 piece
Package Level 2 Width	40 in 1016 mm
Package Level 2 Height	50 in 1270 mm
Package Level 2 Depth / Length	48 in 1219 mm

---

### Additional Information

Application	Designed and listed for use with non-metallic sheathed cable in accordance with Article 314 of the National Electrical Code
Brand / Label	Carlton / Nutek
Color	Blue
Effective Date	20080116
Material	PVC
Number of Knockouts	4
Product Name	PLASTIC ELEC BOX W/O CONDUCTOR
Product Type	Outlet Boxes
Special Functions	Patented design allows for adjustment from 0 in. to 1-3/4 in. after installation.
Standards	UL E11461
Volume	34 in <sup>3</sup>

---

### Certificates and Declarations (Document Number)

Data Sheet, Technical Information	B234ADJC
Instructions and Manuals	B234ADJC

---

### Classifications

ETIM 6	EC002601 - Box/housing for built-in mounting in the wall/ceiling
ETIM 7	EC002601 - Box/housing for built-in mounting in the wall/ceiling
ETIM 8	EC002601 - Box/housing for built-in mounting in the wall/ceiling
UNSPSC	39121308
WEEE Category	Product Not in WEEE Scope
IDEA Granular Category Code (IGCC)	4433 >> Outlet box

---

### Categories

Low Voltage Products and Systems → Installation Products → Wire Management and Connectivity → Electrical Boxes

