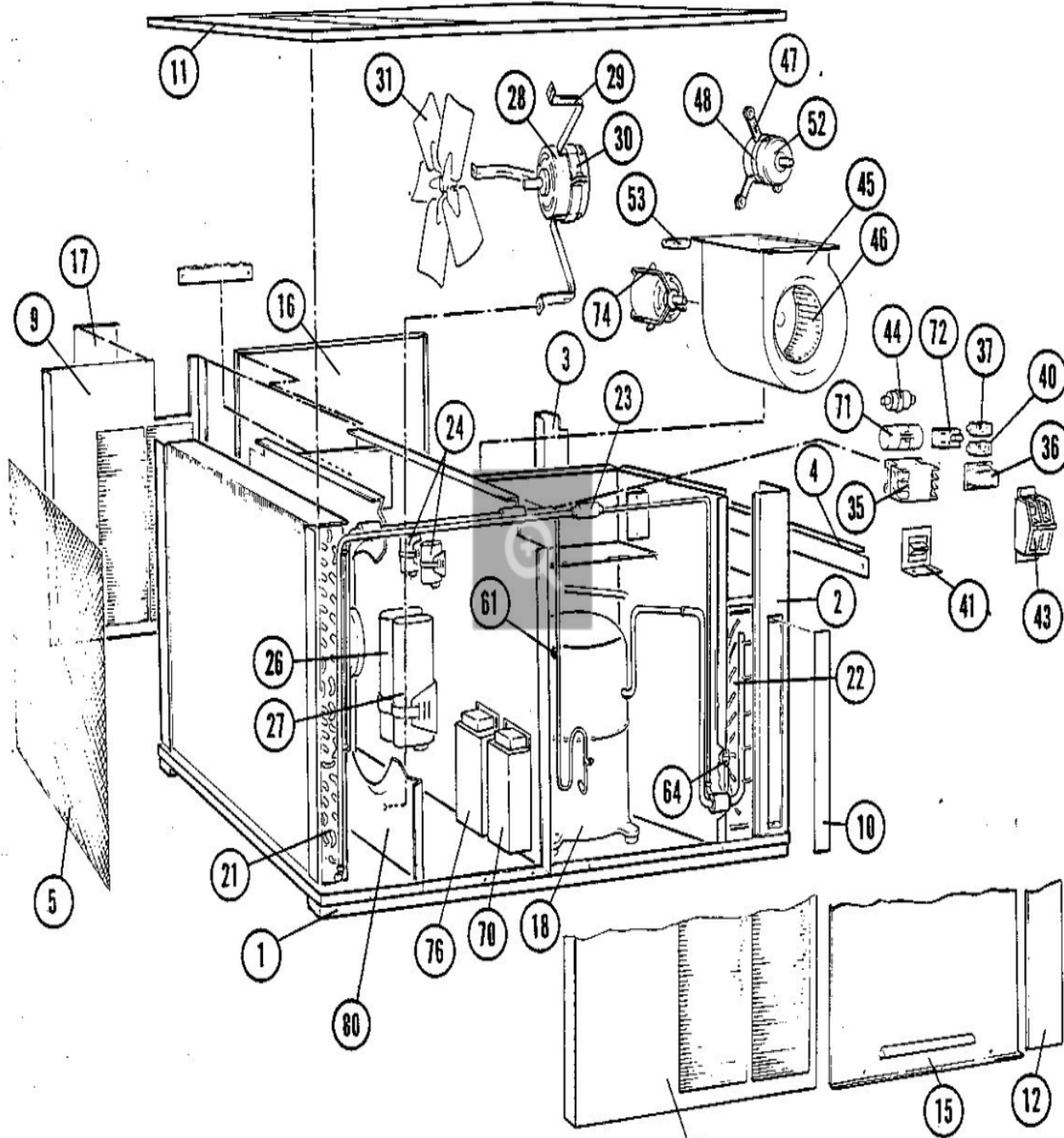


# CHA9/MCHA9 SERIES

MAY 7, 1985



Revision Number - 1

## BLOWER PARTS

Callout	Name	Quantity	Description
	PLATE-CUTOFF Cat #: 15C11 Model/Part #: LB-43753C	1	(INTL ONLY)
	PLATE-CUTOFF Cat #: 39A22 Model/Part #: LB-43754C	1	PLT C/O
45	HOUSING BLOWER (73A64) Cat #: LB-43433BC Model/Part #: LB-43433BC	1	(INTL ONLY)
45	HOUSING-BLOWER Cat #: 21882 Model/Part #: LB-43433BD	1	BLOWER HOUSING
46	WHEEL-BLOWER Cat #: 21703 Model/Part #: P-5-224	1	"12-5/8""X12-5/8""X5/8""BORE"
46	WHEEL-BLOWER Cat #: 16596 Model/Part #: P-8-10471	1	"10-5/8""X10-5/8""X1/2""BORE (INTL ONLY)
47	ARM-MOTOR MOUNT Cat #: 32865 Model/Part #: P-8-9500	3	(INTL ONLY)
48	BAND-MOTOR Cat #: LB-75126D Model/Part #: LB-75126D	1	FORM MOTOR BAND *
52	MOTOR-BLOWER Cat #: 32941 Model/Part #: P-8-10351	1	"3/4HP,1625RPM,208-230/60/1 (INTL ONLY)"
52	MOTOR-BLOWER Cat #: 32843 Model/Part #: P-8-8711	1	"3/4HP,1075RPM,208-230/60/1"
53	CAPACITOR-BLR MTR Cat #: 53H32 Model/Part #: P-8-1947	1	"7MFD,370VAC"
74	FRAME-MOTOR Cat #: 68904 Model/Part #: LB-14713	3	MOTOR FRAME ASSEMBLY

## CABINET PARTS

<b>Callout</b>	<b>Name</b>	<b>Quantity</b>	<b>Description</b>
	BAR-BUSS Cat #: LB-21838 Model/Part #: LB-21838	1	(INTL ONLY)
	PAN-DRAIN Cat #: 46C74 Model/Part #: LB-43348CB	1	I.D. COIL
	SHIELD-DRIP Cat #: 12G46 Model/Part #: LB-43727B	1	I.D. COIL COMP DIV PANEL
	SHIELD-DRIP Cat #: 31F84 Model/Part #: LB-43760C	1	I.D. BLO SECT
	ANGLE Cat #: 86C88 Model/Part #: LB-43762D	1	FILTER SECURING
	COVER-CONTROL BOX Cat #: 83F61 Model/Part #: LB-43766C	1	(3PH UNITS)
	COVER-CONTROL BOX Cat #: LB-43776C Model/Part #: LB-43776C	1	(1PH UNITS)
	ANGLE Cat #: 59C21 Model/Part #: LB-44290C	1	COIL PROTECTION
	BRACKET Cat #: LB-45278D Model/Part #: LB-45278D	1	ELEMENT SUPPORT
	BEARING Cat #: 68403 Model/Part #: P-8-4425	1	FOR BUSS BAR(INTL ONLY)
	FILTER-AIR Cat #: 30334 Model/Part #: P-8-7820	2	"16" X 20" X 1",SLAB"
1	RAIL-BASE Cat #: 50365 Model/Part #: LB-43703C	2	RAIL
2	MULLION Cat #: 50356 Model/Part #: LB-43383CB	1	I.D. COIL-CORNER FRONT
3	MULLION Cat #: 51A59 Model/Part #: LB-43730CA	1	I.D. COIL-CORNER REAR
5	GUARD-OUTDOOR COIL Cat #: 58A90 Model/Part #: LB-29818B	1	GUARD-COIL
8	MULLION Cat #: 50239 Model/Part #: LB-43756A	1	OUTDOOR COIL- FRONT
9	MULLION	1	OUTDOOR COIL-

Callout	Name	Quantity	Description
	Cat #: 36A41 Model/Part #: LB-43758A		REAR
10	PANEL Cat #: 14F16 Model/Part #: LB-48911CB	1	FILTER SECTION
11	PANEL-TOP Cat #: 50240 Model/Part #: LB-43763BA	1	PANEL-TOP
12	PANEL Cat #: 40A32 Model/Part #: LB-43767CA	1	I.D. COIL SECTION
15	PANEL Cat #: 50431 Model/Part #: LB-43461CB	1	COMP SECTION
16	PANEL Cat #: 50286 Model/Part #: LB-43770CA	1	I.D. BLOWER SECTION
17	COVER Cat #: 55C91 Model/Part #: LB-43774D	1	MAKEUP BOX

## CONTROL PANEL PARTS

Callout	Name	Quantity	Description
	BRACKET Cat #: LB-33682D Model/Part #: LB-33682D	1	SWITCH MTG (USE W/75A7901 TRANSFORMER)
	BRACKET Cat #: LB-43775D Model/Part #: LB-43775D	1	CIRCUIT BRKR (1PH ONLY)
	BRACKET Cat #: LB-6306 Model/Part #: LB-6306	1	START CAP (1PH ONLY)
	ANGLE Cat #: 87174 Model/Part #: P-8-10411	2	CIRCUIT BRKR (1PH ONLY)
	FUSE Cat #: 66247 Model/Part #: P-8-1674	1	"TRANSF-2.5AMP,TYPE C,250V"
	BUSHING-SNAP Cat #: 86795 Model/Part #: P-8-8278	3	"7/10" I.D. FOR 7/8" OPENING"

Callout	Name	Quantity	Description
35	CONTACTOR Cat #: 68652 Model/Part #: P-8-7711	1	"DPDT,24V,(280-230/60/3)"
35	CONTACTOR Cat #: 68655 Model/Part #: P-8-7726	1	"3PDT,24V,3POLE,(208-240/60/3,208-230/6
35	CONTACTOR Cat #: 38393 Model/Part #: P-8-7736	1	"3PDT,24V,(380-420/3- INTL ONLY)"
36	TRANSFORMER Cat #: 13H28 Model/Part #: 75A7901	1	"208/230VPRI,24VSEC,50VA, W/FUSE(208-230
36	TRANSFORMER Cat #: 66571 Model/Part #: P-8-649	1	"230VPRI,24VSEC,50VA,W/FUSE (220-240/3-I
37	RELAY Cat #: 38246 Model/Part #: P-8-7355	1	"I.D. BLOWER-SPDT,24V"
40	RELAY Cat #: 37556 Model/Part #: P-8-7354	1	"FAN MOTOR SPST,24V,(208-230/60/1,380-4
41	SWITCH Cat #: 79A77 Model/Part #: 79A7701	1	"VOLT SEL 208/230V,SPDT(USE W/75A7901 TR
43	SWITCH Cat #: 38757 Model/Part #: P-8-10395	1	"2POLE,30AMP,(1PH ONLY)"
71	CAPACITOR-START Cat #: 66083 Model/Part #: P-8-1101	1	"135-155MFD,320VAC(1PH ONLY)"
72	RELAY-POTENTIAL Cat #: 66463 Model/Part #: P-8-1617	1	"SPNC,420V (1PH ONLY)"

## COOLING PARTS

<b>Callout</b>	<b>Name</b>	<b>Quantity</b>	<b>Description</b>
	CAP-SEAL Cat #: 66817 Model/Part #: P-8-1401	3	FITTING-PRESSURE TAP
	VALVE CORE Cat #: 66820 Model/Part #: P-8-1897	2	VALVE, CORE 8075910047
	BLOCK-TERMINAL Cat #: P-8-2742 Model/Part #: P-8-2742	1	MAKEUP BOX(220-240/3) (INTL ONLY)
	CAP-SEAL Cat #: 58114 Model/Part #: P-8-3187	2	CAP, BRASS
	BUSHING-SNAP Cat #: 86795 Model/Part #: P-8-8278	4	"MAKEUP BOX(7/10" I.D. FOR 7/8" OPENING)"
	BLOCK-TERMINAL Cat #: P-8-886 Model/Part #: P-8-886	1	MAKEUP BOX(380-420/3) (INTL ONLY)
	BLOCK-TERMINAL Cat #: 38713 Model/Part #: P-8-9729	1	MAKEUP BOX(INTL ONLY)
	MOUNT PKG-COMP Cat #: 36A69 Model/Part #: PR-365	1	MOUNT PKG-COMP
18	COMPRESSOR Cat #: 25J57 Model/Part #: P-8-10538	1	"5TON,208-230/60/1,TEC"
18	COMPRESSOR Cat #: 21J64 Model/Part #: P-8-10539	1	"5TON,200-240/50/3,TEC (INTL ONLY)"
18	COMPRESSOR Cat #: 29M24 Model/Part #: P-8-10599	1	"5TON,380-420/50/3,TEC (INTL ONLY)"
21	COIL-OUTDOOR Cat #: 69144 Model/Part #: 8-6-8201C	1	L/MANIFOLD
22	COIL-INDOOR	1	W/MANIFOLD

Callout	Name	Quantity	Description
	Cat #: 84A60 Model/Part #: LB-26591BA		
23	CAP TUBE ASSY Cat #: 35A24 Model/Part #: LB-21974BF	1	"STRAINER,TUBES,&ADAPTORS"
24	CAPACITOR Cat #: 53H02 Model/Part #: P-8-1379	2	"5MFD,370VAC"
27	CAPACITOR-RUN Cat #: 87A7601PR Model/Part #: 87A7601PR	1	(1PH ONLY)
28	MOTOR-FAN Cat #: 70C16 Model/Part #: P-8-10613	2	"1/4HP,1075RPM,230/60/1"
29	ARM-MOTOR MTG Cat #: 87088 Model/Part #: P-8-10465	6	O.D. FAN MOTOR
30	BAND-MOTOR Cat #: LB-75126D Model/Part #: LB-75126D	1	FORM MOTOR BAND *
31	FAN Cat #: 87090 Model/Part #: P-8-10470	2	"1/2""BORE,18""DIA,5 BLADES"
61	SWITCH-LO PRESS Cat #: 38509 Model/Part #: P-8-9152	1	"CUTIN 30PSIG,CUTOUT 10PSIG"
64	DISTRIBUTOR Cat #: 40A78 Model/Part #: P-8-10467	1	L/TUBES

**Note:**

There are no technical notes for this product.