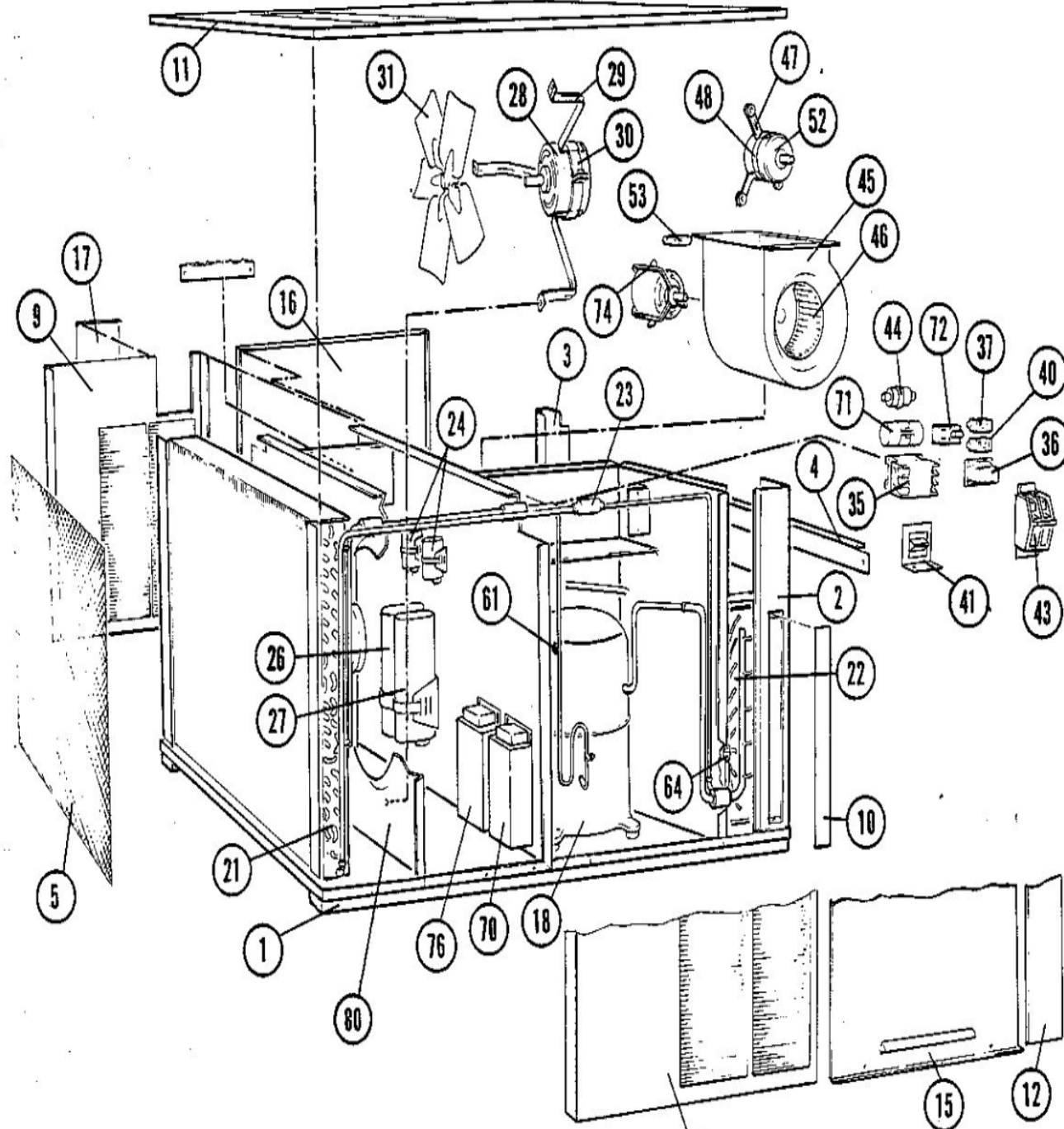


CHA9/MCHA9 SERIES
MAY 7, 1985



Revision Number - 4

*OPTIONAL PARTS-FIELD INSTALLED

Callout	Name	Quantity	Description
	THERMOSTAT Cat #: 43C78 Model/Part #: 43C7801	1	THERMOSTAT
	TEE Cat #: 87071 Model/Part #: P-8-10569	1	SCHRADER DEPRESSOR
	NUT Cat #: 59498 Model/Part #: P-8-1218	2	FLARE
	KNOB-DIAL Cat #: 6882 Model/Part #: P-8-3096	1	FOR THERMOSTAT
	CAP-SEAL Cat #: 58114 Model/Part #: P-8-3187	1	CAP, BRASS
	FITTING Cat #: 59784 Model/Part #: P-8-4934	2	STRAIN RELIEF
	SWITCH-LO PRESS Cat #: 68493 Model/Part #: P-8-6383	1	"IN 285PSIG,OUT 140PSIG"

BLOWER PARTS

Callout	Name	Quantity	Description
	PLATE-CUTOFF Cat #: 39A22 Model/Part #: LB-43754C	1	PLT C/O
45	HOUSING-BLOWER Cat #: 21882 Model/Part #: LB-43433BD	1	BLOWER HOUSING
46	WHEEL-BLOWER Cat #: 21703 Model/Part #: P-5-224	1	"12-5/8""X12- 5/8""X5/8""BORE"
52	MOTOR-BLOWER Cat #: 32843 Model/Part #: P-8-8711	1	"3/4HP,1075RPM,208- 230/60/1"
53	CAPACITOR Cat #: 81A39 Model/Part #: 81A3901	1	"7MFD,370VAC"
74	FRAME-MOTOR Cat #: 68904 Model/Part #: LB-14713	3	MOTOR FRAME ASSEMBLY

CABINET PARTS

Callout	Name	Quantity	Description
	PAN-DRAIN Cat #: 70G10 Model/Part #: LB-43348CC	1	I.D. COIL
	SHIELD-DRIP Cat #: 12G46 Model/Part #: LB-43727B	1	I.D. COIL COMP DIV PANEL
	SHIELD-DRIP Cat #: 31F84 Model/Part #: LB-43760C	1	I.D. BLO SECT
	ANGLE Cat #: 86C88 Model/Part #: LB-43762D	1	SUPPORT
	COVER-CONTROL BOX Cat #: 83F61 Model/Part #: LB-43766C	1	(3PH UNITS)
	COVER-CONTROL BOX Cat #: LB-43776C Model/Part #: LB-43776C	1	(1PH UNITS)
	ANGLE Cat #: 59C21 Model/Part #: LB-44290C	1	COIL PROTECTION
	BRACKET Cat #: LB-45278D Model/Part #: LB-45278D	1	ELEMENT SUPPORT
	FILTER-AIR Cat #: 30334 Model/Part #: P-8-7820	2	"16" X 20" X 1",SLAB"
1	RAIL-BASE Cat #: 50365 Model/Part #: LB-43703C	2	RAIL
2	MULLION Cat #: 50356 Model/Part #: LB-43383CB	1	I.D. COIL-CORNER FRONT
3	MULLION Cat #: 51A59 Model/Part #: LB-43730CA	1	I.D. COIL-CORNER REAR
5	GUARD-OUTDOOR COIL Cat #: 58A90 Model/Part #: LB-29818B	1	GUARD-COIL
8	MULLION Cat #: 50239 Model/Part #: LB-43756A	1	OUTDOOR COIL- FRONT
9	MULLION Cat #: 36A41 Model/Part #: LB-43758A	1	OUTDOOR COIL- REAR

Callout	Name	Quantity	Description
10	PANEL Cat #: 14F16 Model/Part #: LB-48911CB	1	FILTER SECTION
11	PANEL-TOP Cat #: 50240 Model/Part #: LB-43763BA	1	PANEL-TOP
12	PANEL Cat #: 40A32 Model/Part #: LB-43767CA	1	I.D. COIL SECTION
15	PANEL Cat #: 50431 Model/Part #: LB-43461CB	1	COMP SECTION
16	PANEL Cat #: 50286 Model/Part #: LB-43770CA	1	I.D. BLOWER SECTION
17	COVER Cat #: 55C91 Model/Part #: LB-43774D	1	MAKEUP BOX

CONTROL PANEL PARTS

Callout	Name	Quantity	Description
	RELAY POTENTIAL Cat #: 10B17 Model/Part #: 10B1701	1	"SPNC,395V(1PH ONLY)"
	FUSE Cat #: 10G74 Model/Part #: 10G7401	2	"TYPE FNQ,10AMP,500V (460V, U.S. ONLY)"
	BRACKET Cat #: 57A0201 Model/Part #: 57A0201	1	START ASSIST MTG(1PH ONLY)
	HOLDER Cat #: 89F02 Model/Part #: 89F0201	2	"(460V, U.S. ONLY)"
	BRACKET Cat #: LB-33682D Model/Part #: LB-33682D	1	(USE W/75A7901 TRANSFORMER)
	BRACKET Cat #: LB-43775D Model/Part #: LB-43775D	1	CIRCUIT BRKR(1PH ONLY)
	BRACKET	1	START CAP MTG

Callout	Name	Quantity	Description
	Cat #: LB-6306 Model/Part #: LB-6306		
	ANGLE Cat #: 87174 Model/Part #: P-8-10411	2	CIRCUIT BRKR(1PH ONLY)
	FUSE Cat #: 66247 Model/Part #: P-8-1674	1	"TRANSF-2.5AMP,TYPE C,250V"
	BUSHING-SNAP Cat #: 86795 Model/Part #: P-8-8278	3	"7/10""I.D. FOR 7/8""OPENING"
35	CONTACTOR Cat #: 68652 Model/Part #: P-8-7711	1	"DPDT,24V(1PH UNITS)"
35	CONTACTOR Cat #: 38393 Model/Part #: P-8-7736	1	"3PDT,24V(3PH UNITS)"
36	TRANSFORMER Cat #: 13H28 Model/Part #: 75A7901	1	"208/230VPRI,24VSEC,50VA,NO FUSE(208-230
36	TRANSFORMER Cat #: 66571 Model/Part #: P-8-649	1	"230VPRI,24VSEC,50VA,W/FUSE (220-240/50/
37	RELAY Cat #: 38246 Model/Part #: P-8-7355	1	"I.D. BLOWER-SPDT,24V"
40	RELAY Cat #: 37556 Model/Part #: P-8-7354	1	"FAN MTR SPST,24V,(208-230/60/ 1;460/60/
41	SWITCH Cat #: 79A77 Model/Part #: 79A7701	1	"VOLT SEL 208/230V,SPDT(USE W/75A7901 TR
43	SWITCH Cat #: 38757 Model/Part #: P-8-10395	1	"2POLE,30AMP(1PH ONLY)"
44	START ASSIST DEVICE	1	(1PH ONLY)

Callout	Name	Quantity	Description
	Cat #: 56A70 Model/Part #: 56A2701		
71	CAPACITOR-START Cat #: 44A93 Model/Part #: 44A9301	1	"145-175MFD,330VAC(1PH ONLY)"

COOLING PARTS

Callout	Name	Quantity	Description
	RELAY-OVERLOADCOMP-INTERNAL Cat #: Model/Part #:	1	
	TRANSFORMER Cat #: 41C31 Model/Part #: 41C3101	1	"600VPRI,120/240VSEC,3000VA, NO FUSE(575
	MOUNT PKG-COMP Cat #: LB-37485CA Model/Part #: LB-37485CA	1	MOUNT PKG-COMP
	CAP-SEAL Cat #: 66817 Model/Part #: P-8- 1401	3	FITTING-PRESSURE TAP
	VALVE CORE Cat #: 66820 Model/Part #: P-8- 1897	2	VALVE, CORE 8075910047
	CAP-SEAL Cat #: 58114 Model/Part #: P-8- 3187	2	CAP, BRASS
	BUSHING-SNAP Cat #: 86795 Model/Part #: P-8- 8278	4	"MAKEUP BOX(7/10""I.D.FOR 7/8""OPENING)"
	BUSHING-SNAP Cat #: P-8-9863 Model/Part #: P- 8-9863	1	"1-5/16""I.D. FOR 1- 1/2""OPENING"
18	COMPRESSOR Cat #: 68F7501 Model/Part #: 68F7501	1	"4-2/3TON,575/60/3,LENNOX"

Callout	Name	Quantity	Description
18	COMPRESSOR Cat #: 68J69 Model/Part #: 98C8801	1	"4-2/3TON,208-230/60/1,LEN"
18	COMPRESSOR Cat #: 14K60 Model/Part #: 98C8901	1	"4-2/3TON,208-230/60/3,LEN"
18	COMPRESSOR Cat #: 14K61 Model/Part #: 98C9001	1	"4-2/3TON,460/60/3,LENNOX"
21	COIL-OUTDOOR Cat #: 69143 Model/Part #: 8-6-8200C	1	L/MANIFOLD
22	COIL-INDOOR Cat #: 58A87 Model/Part #: LB-26590BA	1	W/MANIFOLD
22	COIL-INDOOR Cat #: 58A88 Model/Part #: LB-26590BB	1	W/MANIFOLD (575V UNITS)
23	CAP TUBE ASSY Cat #: 35A23 Model/Part #: LB-21974BE	1	"STRAINER,TUBES,&ADAPTORS"
24	CAPACITOR-FAN MTR Cat #: 53H02 Model/Part #: 81A3801	2	"5MFD,370VAC"
26	CAPACITOR-RUN Cat #: 53H14 Model/Part #: 96C5301	1	"25MFD,440VAC(1PH ONLY)"
27	CAPACITOR-RUN Cat #: 53H14 Model/Part #: 96C5301	1	"25MFD,440VAC(1PH ONLY)"
28	MOTOR-FAN Cat #: 70C16 Model/Part #: P-8-9492	2	"1/6HP,1075RPM,208-230/60/1"
29	ARM-MOTOR MTG Cat #: 87088 Model/Part #: P-8-10465	6	O.D. FAN MOTOR

Callout	Name	Quantity	Description
30	BAND-MOTOR Cat #: LB-75126D Model/Part #: LB-75126D	2	O.D. FAN MOTOR
31	FAN Cat #: 87089 Model/Part #: P-8- 10469	2	"1/2"BORE,18"DIA,5 BLADES"
61	SWITCH-LO PRESS Cat #: 38509 Model/Part #: P-8- 9152	1	"CUTIN 30PSIG,CUTOUT 10PSIG"
70	TRANSFORMER Cat #: 41C30 Model/Part #: 41C3001	1	"240/480VPRI,120/240VSEC, 3000VA,NO FUSE

Note:

There are no technical notes for this product.