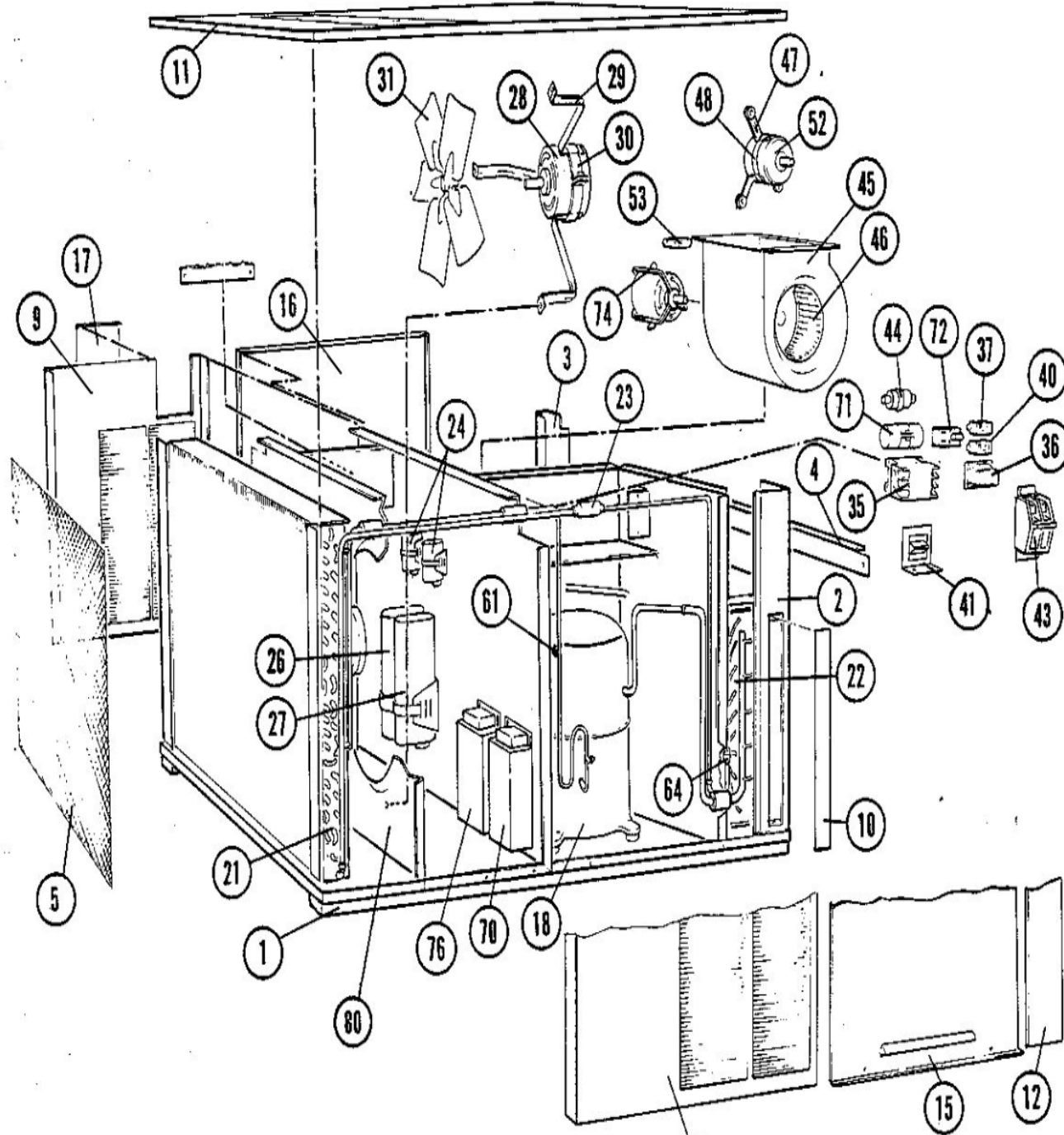


CHA9/MCHA9 SERIES
MAY 7, 1985



Revision Number - 3

BLOWER PARTS

Callout	Name	Quantity	Description
	PLATE-CUTOFF Cat #: 15C11 Model/Part #: LB-43753C	1	PLATE-C/O
45	HOUSING BLOWER (73A64) Cat #: LB-43433BC Model/Part #: LB-43433BC	1	HOUSING BLOWER (73A64)
46	WHEEL-BLOWER Cat #: 16596 Model/Part #: P-8-10471	1	"1/2"BORE,10-5/8"X10-5/8"
47	ARM-MOTOR MOUNT Cat #: 32865 Model/Part #: P-8-9500	3	ARM-MOTOR MTG
48	BAND-MOTOR Cat #: LB-75126D Model/Part #: LB-75126D	1	FORM MOTOR BAND *
52	MOTOR-BLOWER Cat #: 32909 Model/Part #: P-8-10431	1	"1/2HP,1075RPM,208-230V/60/1"
53	CAPACITOR-BLR MTR Cat #: 53H32 Model/Part #: P-8-1947	1	"7MFD,370VAC"

CABINET PARTS

Callout	Name	Quantity	Description
	PAN-DRAIN Cat #: 46C74 Model/Part #: LB-43348CB	1	I.D. COIL
	SHIELD-DRIP Cat #: 12G46 Model/Part #: LB-43727B	1	I.D. COIL-COMP DIV PANEL
	ANGLE Cat #: 86C88 Model/Part #: LB-43762D	1	SECURING
	COVER-CONTROL BOX Cat #: 83F61 Model/Part #: LB-43766C	1	(3PH UNITS)
	COVER-CONTROL BOX Cat #: LB-43776C Model/Part #: LB-43776C	1	(1PH UNITS)
	SHIELD-DRIP	1	I.D. BLWR SECT

Callout	Name	Quantity	Description
	Cat #: LB-43922C Model/Part #: LB-43922C		
	BRACKET Cat #: LB-45278D Model/Part #: LB-45278D	1	ELEMENT SUPPORT
	FILTER-AIR Cat #: 30334 Model/Part #: P-8-7820	2	"16" X 20" X 1",SLAB"
1	RAIL-BASE Cat #: 50365 Model/Part #: LB-43703C	2	RAIL
2	MULLION Cat #: 50356 Model/Part #: LB-43383CB	1	I.D. COIL-CORNER FRONT
3	MULLION Cat #: 51A59 Model/Part #: LB-43730CA	1	I.D. COIL-CORNER REAR
5	GUARD-OUTDOOR COIL Cat #: 58A90 Model/Part #: LB-29818B	1	GUARD-COIL
8	MULLION Cat #: 50239 Model/Part #: LB-43756A	1	OUTDOOR COIL- FRONT
9	MULLION Cat #: 36A41 Model/Part #: LB-43758A	1	OUTDOOR COIL- REAR
10	PANEL Cat #: 14F16 Model/Part #: LB-48911CB	1	FILTER SECTION
11	PANEL-TOP Cat #: 50240 Model/Part #: LB-43763BA	1	PANEL-TOP
12	PANEL Cat #: 40A32 Model/Part #: LB-43767CA	1	I.D. COIL SECTION
15	PANEL Cat #: 50431 Model/Part #: LB-43461CB	1	COMP SECTION
16	PANEL Cat #: 50286 Model/Part #: LB-43770CA	1	I.D. BLOWER SECTION
17	COVER Cat #: 55C91 Model/Part #: LB-43774D	1	MAKEUP BOX

CONTROL PANEL PARTS

Callout	Name	Quantity	Description
	BRACKET Cat #: 57A0201 Model/Part #: 57A0201	1	START ASSIST (1PH ONLY)
	BRACKET Cat #: LB-33682D Model/Part #: LB-33682D	1	SWITCH MTG(USE W/75A7901 TRANSFORMER)
	BRACKET Cat #: LB-43775D Model/Part #: LB-43775D	1	"CIRC BRKR,(1PH ONLY)"
	ANGLE Cat #: 87174 Model/Part #: P-8-10411	2	"CIRC BRKR,(1PH ONLY)"
	FUSE Cat #: 66247 Model/Part #: P-8-1674	1	"TRANSF,2.5AMP,TYPE C,250V"
	BUSHING-SNAP Cat #: 86795 Model/Part #: P-8-8278	3	"7/10" I.D. FOR 7/8" OPENING"
35	CONTACTOR-COMPR Cat #: 37656 Model/Part #: P-8-7721	1	"DPDT,24V(1PH UNITS)"
35	CONTACTOR Cat #: 38393 Model/Part #: P-8-7736	1	"3PDT,24V(3PH UNITS)"
36	TRANSFORMER Cat #: 13H28 Model/Part #: 75A7901	1	"208/230VPRI,24VSEC 50VA,W/FUSE"
36	TRANSFORMER Cat #: 66571 Model/Part #: P-8-649	1	"230VPRI,24VSEC,50VA W/FUSE(460V UNITS)"
37	RELAY Cat #: 37556 Model/Part #: P-8-7354	1	"FAN MOTOR- SPST,24V(208-230V-1PH;460V-3"
37	RELAY Cat #: 38246 Model/Part #: P-8-7355	1	"I.D. BLOWER- SPDT,24V"
40	SWITCH Cat #: 38757 Model/Part #: P-8-10395	1	"2POLE,30 AMP,(1PH ONLY)"
41	SWITCH Cat #: 79A77 Model/Part #: 79A7701	1	"VOLTAGE SEL,SPDT,208-230V(USE W/75A7901
44	START ASSIST DEVICE Cat #: 56A70 Model/Part #: 56A2701	1	(1PH ONLY)

COOLING PARTS

Callout	Name	Quantity	Description
	RELAY-OVERLOADCOMP-INTERNAL Cat #: Model/Part #:	1	
	MOUNT PKG-COMP Cat #: 27G99 Model/Part #: 79A7901PR	1	MOUNT PKG-COMP
	CAP-SEAL Cat #: 66817 Model/Part #: P-8-1401	2	FITTING-PRESSURE TAP
	VALVE CORE Cat #: 66820 Model/Part #: P-8-1897	2	VALVE, CORE 8075910047
	CAP-SEAL Cat #: 58114 Model/Part #: P-8-3187	2	CAP, BRASS
	BUSHING-SNAP Cat #: 86795 Model/Part #: P-8-8278	4	"MAKEUP BOX(7/10""I.D.FOR 7/8"" OPENING)
18	COMPRESSOR Cat #: 68J65 Model/Part #: 75A9901	1	"4TON,208-230/60/1,TEC"
18	COMPRESSOR Cat #: 68J66 Model/Part #: 76A0001	1	"4TON,200-230/60/3,TEC"
18	COMPRESSOR Cat #: 68J67 Model/Part #: 76A0301	1	"4TON,460/60/3,TEC"
21	COIL-OUTDOOR Cat #: 69143 Model/Part #: 8-6-8200C	1	L/MANIFOLD
22	COIL-INDOOR Cat #: 58A87 Model/Part #: LB-26590BA	1	W/MANIFOLD
23	CAP TUBE ASSY Cat #: 35A22 Model/Part #: LB-	1	"STRAINER,TUBES,&ADAPTORS"

Callout	Name	Quantity	Description
	21974BD		
24	CAPACITOR Cat #: 53H02 Model/Part #: P-8-1379	1	"5MFD,370VAC"
27	CAPACITOR-RUN Cat #: 96C56 Model/Part #: 96C5601	1	"40MFD,440VAC(1PH ONLY)"
28	MOTOR-FAN Cat #: 70C16 Model/Part #: P-8-10613	1	"1/4HP,1075RPM,230/60/1"
29	ARM-MOTOR MTG Cat #: 40A77 Model/Part #: P-8-10379	3	ARM-MTR MT
30	BAND-MOTOR Cat #: LB-75126D Model/Part #: LB-75126D	1	FORM MOTOR BAND *
31	FAN Cat #: 87296 Model/Part #: P-8-10388	1	"1/2""BORE,20""DIA,4 BLADES"
61	SWITCH-LO PRESS Cat #: 38509 Model/Part #: P-8-9152	1	"CUTIN 30PSIG,CUTOUT 10PSIG"
70	TRANSFORMER Cat #: 64A38 Model/Part #: P-8-11289	1	"240/480VPRI,120/240VSEC, 3000VA,NO FUSE"

Note:

There are no technical notes for this product.