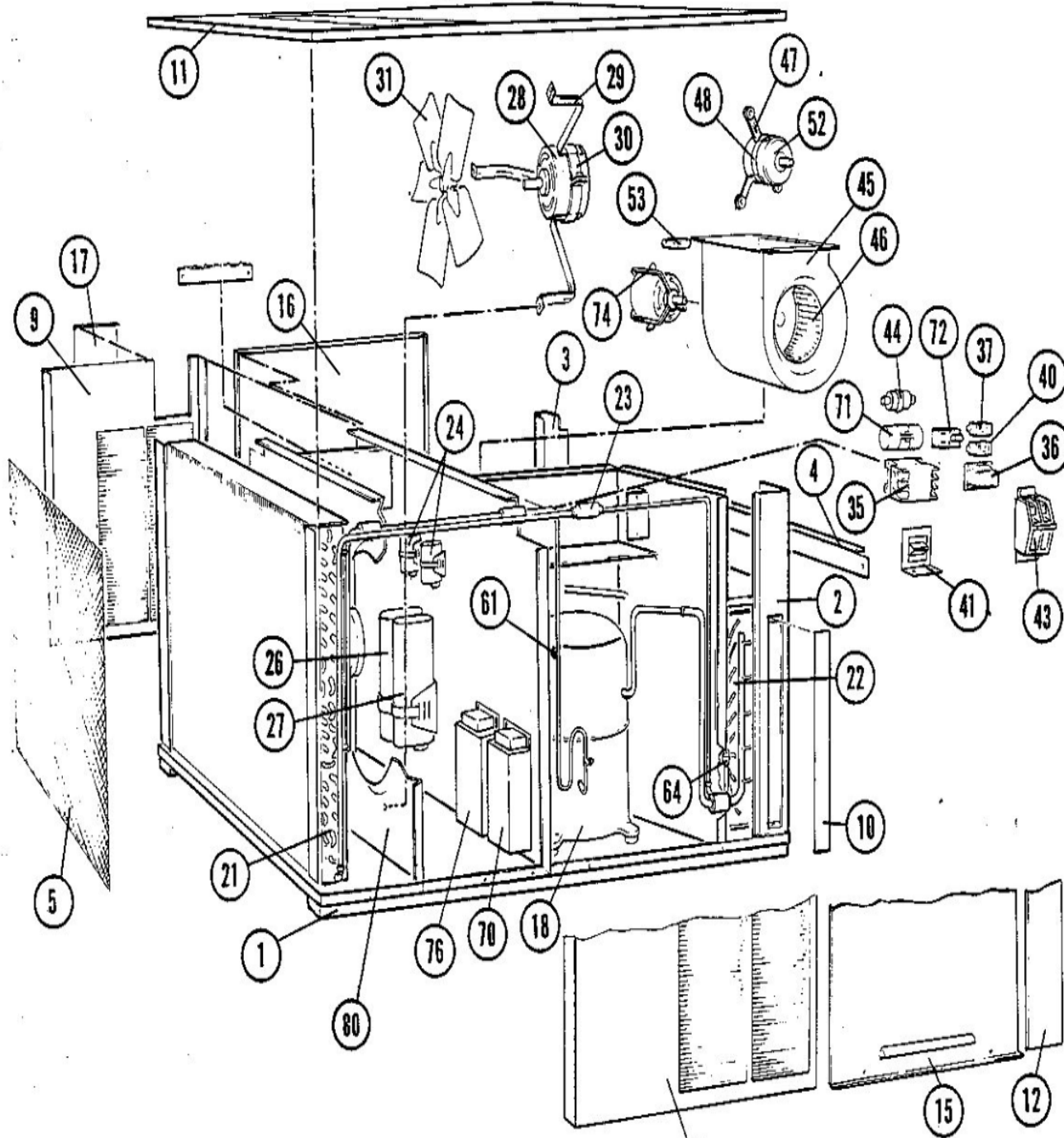


CHA9/MCHA9 SERIES

MAY 7, 1985



Revision Number - 2

BLOWER PARTS

Callout	Name	Quantity	Description
	PLATE-CUTOFF Cat #: 56A47 Model/Part #: LB-43447C	1	PLATE-CUTOFF
45	HOUSING-BLOWER Cat #: 21893 Model/Part #: LB-43433BB	1	BLOWER HOUSING
46	WHEEL-BLOWER Cat #: 21706 Model/Part #: P-5-217	1	"1/2" BORE, 10-5/8" X 9-1/2"
47	ARM-MOTOR MOUNT Cat #: 32865 Model/Part #: P-8-9500	3	ARM-MOTOR MTG
48	BAND-MOTOR Cat #: LB-75126D Model/Part #: LB-75126D	1	FORM MOTOR BAND *
52	MOTOR-BLOWER Cat #: 32804 Model/Part #: P-8-10615	1	"1/3HP, 1075RPM, 208-230/60/1 (CHA9)"
52	MOTOR-BLOWER Cat #: 36A18 Model/Part #: P-8-10790	1	"3/4HP, 1625RPM, 208-230/60/1 (MCHA9)"
53	CAPACITOR Cat #: 81A39 Model/Part #: 81A3901	1	"7MFD, 370VAC (CHA9)"
53	CAPACITOR Cat #: 81A40 Model/Part #: 81A4001	1	"10MFD, 370VAC (MCHA9)"

CABINET PARTS

Callout	Name	Quantity	Description
	DIVIDER Cat #: LB-32461B Model/Part #: LB-32461B	1	I.D. BLO SECT (CHA9)
	PANEL Cat #: LB-43309CB Model/Part #: LB-43309CB	1	ORIFICE
	COVER-CONTROL BOX Cat #: 57C61 Model/Part #: LB-43458C	1	COVER-BOX
	ANGLE	1	COIL PROTECTION

Callout	Name	Quantity	Description
	Cat #: 83C61 Model/Part #: LB-44289C		
	PANEL Cat #: LB-45016BA Model/Part #: LB-45016BA	1	DEFLECTOR(MCHA9)
	PANEL Cat #: LB-45021CA Model/Part #: LB-45021CA	1	TRANSITION TOP(MCHA9)
	WRAPPER-TRANSITION Cat #: LB-45026BA Model/Part #: LB-45026BA	1	(MCHA9)
	SEAL Cat #: LB-45028D Model/Part #: LB-45028D	1	AIR DEFLECTOR(MCHA9)
	BRACKET Cat #: LB-45278D Model/Part #: LB-45278D	1	ELEMENT SUPPORT
	FILTER Cat #: 30335 Model/Part #: P-8-7822	1	"16"" X 25"" X 1"",SLAB"
1	RAIL-BASE Cat #: 14B93 Model/Part #: LB-43298C	2	RAIL-BASE
2	MULLION Cat #: 50337 Model/Part #: LB-43383CA	1	I.D. COIL-CORNER FRONT
3	MULLION Cat #: 50181 Model/Part #: LB-43387CA	1	I.D. COIL-CORNER REAR
4	CENTERPIECE Cat #: 61A52 Model/Part #: LB-43431C	1	CENTERPIECE- OUTLET END
5	GUARD-OUTDOOR COIL Cat #: LB-29817C Model/Part #: LB-29817C	1	GUARD-OUTDOOR COIL
8	MULLION Cat #: 50160 Model/Part #: LB-43448B	1	OUTDOOR COIL- FRONT
9	MULLION Cat #: 50285 Model/Part #: LB-43449A	1	OUTDOOR COIL- REAR
10	PANEL Cat #: 14F15 Model/Part #: LB-48911CA	1	FILTER SECTION
11	PANEL-TOP Cat #: 50163 Model/Part #: LB-43455CA	1	PANEL-TOP
12	PANEL Cat #: 50321 Model/Part #: LB-43459CA	1	I.D. COIL SECTION

Callout	Name	Quantity	Description
15	PANEL Cat #: 50197 Model/Part #: LB-43461CA	1	COMP SECTION
16	PANEL Cat #: 50231 Model/Part #: LB-43464CA	1	I.D. BLOWER SECTION
17	COVER Cat #: 62C28 Model/Part #: LB-43467D	1	MAKEUP BOX

CONTROL PANEL PARTS

Callout	Name	Quantity	Description
	BRACKET Cat #: LB-33682D Model/Part #: LB-33682D	1	VOLTAGE SELECTOR SWITCH MTG
	FUSE Cat #: 66247 Model/Part #: P-8-1674	1	"TRANSFORMER-CTYPE,2.5AMP,250V"
	BUSHING-SNAP Cat #: 86795 Model/Part #: P-8-8278	2	BUSHING-BLK SNAP
35	CONTACTOR-COMPR Cat #: 37656 Model/Part #: P-8-7721	1	"DPDT,24V(1PH UNITS)"
35	CONTACTOR Cat #: 38393 Model/Part #: P-8-7736	1	"3PDT,24V(3PH UNITS)"
36	TRANSFORMER Cat #: 13H28 Model/Part #: 75A7901	1	"CONTROL-208/230VPRI,24VSEC 50VA,W/FUSE"
37	RELAY Cat #: 38246 Model/Part #: P-8-7355	1	"I.D. BLOWER-SPDT,24V"
41	SWITCH Cat #: 79A77 Model/Part #: 79A7701	1	"VOLT SELECTOR-SPDT,208/230V (USE W/75A7

COOLING PARTS

Callout	Name	Quantity	Description
	RELAY-OVERLOADCOMP-INTERNAL Cat #: Model/Part #:	1	

Callout	Name	Quantity	Description
	SHIELD-DRIP Cat #: LB-32458CA Model/Part #: LB-32458CA	1	I.D. BLO SECT(CHA9)
	CENTERPIECE Cat #: LB-32460B Model/Part #: LB-32460B	1	DRIP SHIELD-I.D. BLO (CHA9)
	PAN-DRAIN Cat #: 72C09 Model/Part #: LB- 43348CA	1	I.D. COIL
	SHIELD-DRIP Cat #: 55C99 Model/Part #: LB- 43355C	1	COMP DIV PANEL FOR DRAIN PAN
	SHIELD-DRIP Cat #: LB-43450C Model/Part #: LB-43450C	1	I.D. BLO SECT(MCHA9)
	CENTERPIECE Cat #: LB-77796B Model/Part #: LB-77796B	1	DRIP SHIELD-I.D. BLO(CHA9- INTL ONLY)
	CAP-SEAL Cat #: 66817 Model/Part #: P-8- 1401	2	FITTING-PRESSURE TAP
	VALVE CORE Cat #: 66820 Model/Part #: P-8- 1897	2	VALVE, CORE 8075910047
	CAP-SEAL Cat #: 58114 Model/Part #: P-8- 3187	2	CAP, BRASS
	BUSHING-SNAP Cat #: 86795 Model/Part #: P-8- 8278	4	MAKEUP BOX
	MOUNT PKG-COMP Cat #: 36A68 Model/Part #: PR-364	1	MOUNT PKG-COMP
18	COMPRESSOR Cat #: 72L45 Model/Part #: P-8- 8793	1	"3TON,208-230/60/1,COPE"
18	COMPRESSOR	1	"3TON,208-230/60/3,COPE"

Callout	Name	Quantity	Description
	Cat #: 78H16 Model/Part #: P-8-8794		
21	COIL-OUTDOOR Cat #: 76507 Model/Part #: LB-43329C	1	L/MANIFOLD
22	COIL-INDOOR Cat #: 69332 Model/Part #: LB-44549BC	1	W/MANIFOLD
23	CAP TUBE ASSY Cat #: 35A21 Model/Part #: LB-21974BC	1	"STRAINER,TUBES,&ADAPTORS"
24	CAPACITOR Cat #: 53H02 Model/Part #: P-8-1379	1	"5MFD,370VAC"
27	CAPACITOR-RUN Cat #: 38319 Model/Part #: P-8-8708	1	"35MFD,440VAC(1PH ONLY)"
28	MOTOR-FAN Cat #: 70C16 Model/Part #: P-8-10613	1	"1/4HP,1075RPM,208-230/60/1"
29	ARM-MOTOR MTG Cat #: 40A77 Model/Part #: P-8-10379	3	ARM-MTR MT
30	BAND-MOTOR Cat #: LB-75126D Model/Part #: LB-75126D	1	FORM MOTOR BAND *
31	FAN Cat #: 87296 Model/Part #: P-8-10388	1	"1/2""BORE,20""DIA,4 BLADES"

Note:

There are no technical notes for this product.