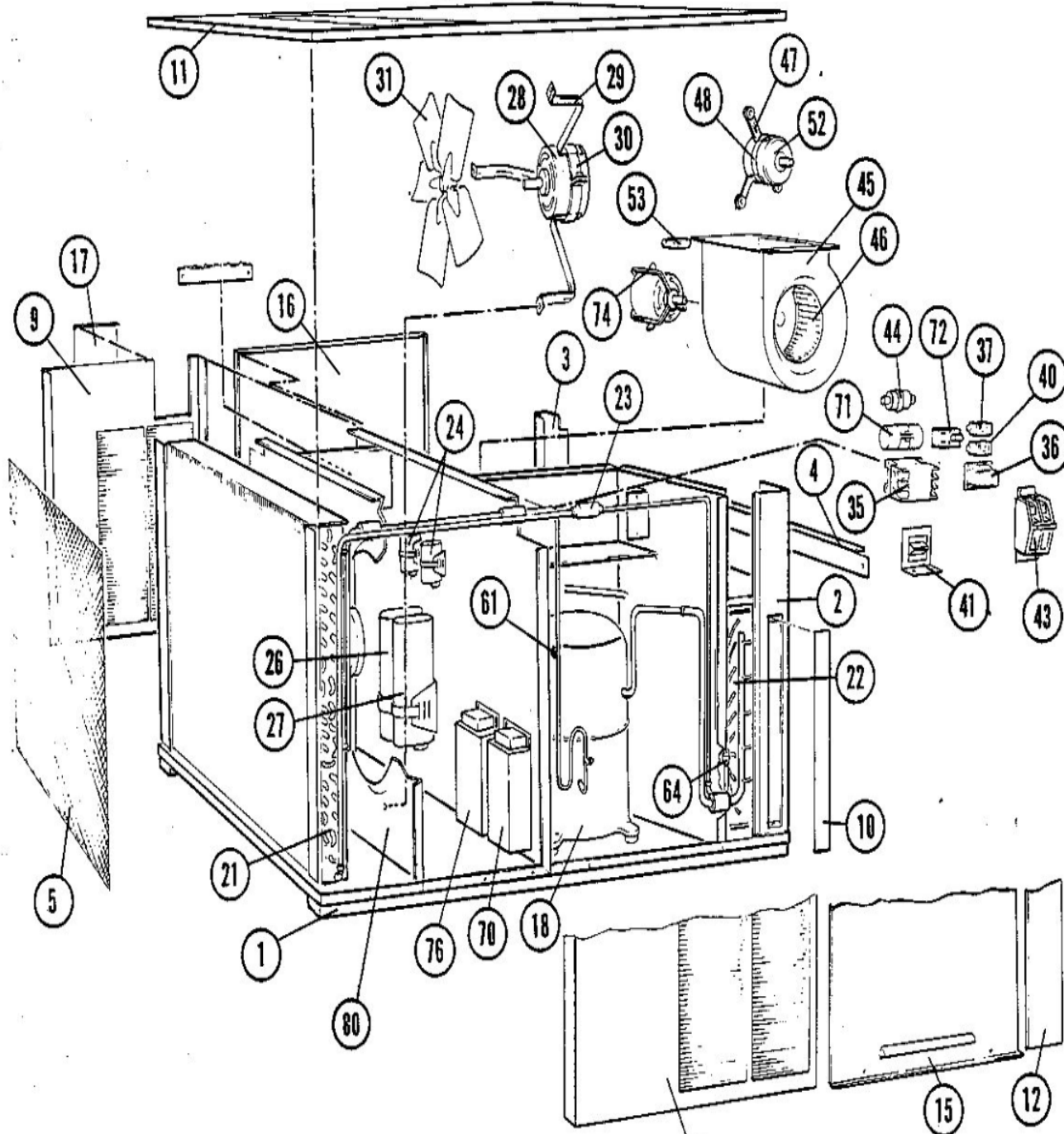


CHA9/MCHA9 SERIES

MAY 7, 1985



Revision Number - 1

BLOWER PARTS

Callout	Name	Quantity	Description
	PLATE-CUTOFF Cat #: 57A22 Model/Part #: LB-43446D	1	PLATE-CUTOFF
	PLATE-CUTOFF Cat #: LB-45447C Model/Part #: LB-45447C	1	(INTL ONLY)
	GROMMET Cat #: P-8-10208 Model/Part #: P-8-10208	3	WASHER-FOR MOTOR MTG ARM (INTL ONLY)
	GROMMET Cat #: P-8-10209 Model/Part #: P-8-10209	3	FOR MOTOR MTG ARM(INTL ONLY)
	SLEEVE Cat #: P-8-10210 Model/Part #: P-8-10210	3	FOR MOTOR MTG ARM(INTL ONLY)
45	HOUSING-BLOWER Cat #: 21911 Model/Part #: LB-43433BA	1	HSG-BLR
45	HOUSING-BLOWER Cat #: 21893 Model/Part #: LB-43433BB	1	(INTL ONLY)
46	WHEEL-BLOWER Cat #: 21706 Model/Part #: P-5-217	1	"1/2"BORE,10-5/8" X 9-1/2" (INTL ONLY
46	WHEEL-BLOWER Cat #: 21707 Model/Part #: P-5-219	1	"1/2"BORE,9-1/2" X 9-1/2"
47	ARM-MOTOR MOUNT Cat #: 32865 Model/Part #: P-8-9500	3	(INTL ONLY)
47	ARM-MOTOR MTG Cat #: 87243 Model/Part #: P-8-9829	3	ARM-MTR MTG
48	BAND-MOTOR Cat #: LB-75126D Model/Part #: LB-75126D	1	O.D. FAN MOTOR
52	MOTOR-BLOWER Cat #: 32804 Model/Part #: P-8-10615	1	"1/3HP,1075RPM,208- 230/60/1 (INTL ONLY)"
52	MOTOR-BLOWER Cat #: 32803 Model/Part #: P-8-8370	1	"1/4HP,1075RPM,208- 230/60/1"

Callout	Name	Quantity	Description
53	CAPACITOR Cat #: 53H02 Model/Part #: P-8-1379	1	"5MFD,370VAC"

CABINET PARTS

Callout	Name	Quantity	Description
	BAR-BUSS Cat #: LB-21838 Model/Part #: LB-21838	1	(INTL ONLY)
	PAN-DRAIN Cat #: 72C09 Model/Part #: LB-43348CA	1	I.D. COIL
	SHIELD-DRIP Cat #: 55C99 Model/Part #: LB-43355C	1	I.D. COIL COMP DIV PANEL
	SHIELD-DRIP Cat #: LB-43450C Model/Part #: LB-43450C	1	I.D. BLO SECT
	COVER-CONTROL BOX Cat #: 57C61 Model/Part #: LB-43458C	1	COVER-BOX
	ANGLE Cat #: 83C61 Model/Part #: LB-44289C	1	O.D. COIL PROTECTION
	BRACKET Cat #: LB-45278D Model/Part #: LB-45278D	1	ELEMENT SUPPORT
	BEARING Cat #: 68403 Model/Part #: P-8-4425	1	FOR BUSS BAR(INTL ONLY)
	FILTER Cat #: 30335 Model/Part #: P-8-7822	1	"16"" X 25"" X 1"" ,SLAB"
1	RAIL-BASE Cat #: 14B93 Model/Part #: LB-43298C	2	RAIL-BASE
2	MULLION Cat #: 50337 Model/Part #: LB-43383CA	1	I.D. COIL-CORNER FRONT
3	MULLION Cat #: 50181 Model/Part #: LB-43387CA	1	I.D. COIL-CORNER REAR
4	CENTERPIECE Cat #: 61A52 Model/Part #: LB-43431C	1	CENTERPIECE- OUTLET END
5	GUARD-OUTDOOR COIL	1	GUARD-O.D. COIL

Callout	Name	Quantity	Description
	Cat #: LB-29817B Model/Part #: LB-29817B		
8	MULLION Cat #: 50160 Model/Part #: LB-43448B	1	OUTDOOR COIL-FRONT
9	MULLION Cat #: 50285 Model/Part #: LB-43449A	1	OUTDOOR COIL-REAR
10	PANEL Cat #: 14F15 Model/Part #: LB-48911CA	1	FILTER SECTION
11	PANEL-TOP Cat #: 50163 Model/Part #: LB-43455CA	1	PANEL-TOP
12	PANEL Cat #: 50321 Model/Part #: LB-43459CA	1	I.D. COIL SECTION
15	PANEL Cat #: 50197 Model/Part #: LB-43461CA	1	COMP SECTION
16	PANEL Cat #: 50231 Model/Part #: LB-43464CA	1	I.D. BLOWER SECTION
17	COVER Cat #: 62C28 Model/Part #: LB-43467D	1	MAKEUP BOX
80	PANEL Cat #: 38F00 Model/Part #: LB-43309CA	1	ORIFICE

CONTROL PANEL PARTS

Callout	Name	Quantity	Description
	HOLDER-FUSE Cat #: 96C76 Model/Part #: 96C7601	1	(INTL ONLY-LATE PROD)
	CARRIER-FUSE Cat #: 96C77 Model/Part #: 96C7701	1	(INTL ONLY-LATE PROD)
	FUSE Cat #: 99C09 Model/Part #: 99C0901	1	"GMA TYPE,3.5AMP,250V(INTL ONLY-LATE PRO
	BRACKET Cat #: LB-33682D Model/Part #:	1	VOLTAGE SELECTOR SWITCH MTG

Callout	Name	Quantity	Description
	LB-33682D		
	FUSE Cat #: 66247 Model/Part #: P-8-1674	1	"TRANSFORMER-C TYPE,2.5AMP, 250V"
	BUSHING-SNAP Cat #: 86795 Model/Part #: P-8-8278	2	"7/10""I.D.FOR 7/8""OPENING"
35	CONTACTOR-COMPR Cat #: 66992 Model/Part #: P-8-2311	1	"DPST,24V(1PH UNITS)"
35	CONTACTOR Cat #: 38393 Model/Part #: P-8-7736	1	"3PDT,24V(3PH UNITS)"
36	TRANSFORMER Cat #: 13H28 Model/Part #: 75A7901	1	"208/230VPRI,24VSEC 50VA,W/FUSE"
36	TRANSFORMER Cat #: 99C10 Model/Part #: 99C1001	1	"240VPRI,24VSEC,60VA,L/FUSE (INTL ONLY-L
36	TRANSFORMER Cat #: 66571 Model/Part #: P-8-649	1	"230VPRI,24VSEC,50VA W/FUSE(INTL ONLY-EA
37	RELAY Cat #: 38246 Model/Part #: P-8-7355	1	"I.D. BLOWER-SPDT,24V"
40	RELAY Cat #: 37556 Model/Part #: P-8-7354	1	"FAN MOTOR-SPST,24V(INTL-3PH ONLY)"
41	SWITCH Cat #: 79A77 Model/Part #: 79A7701	1	"VOLT SELECTOR-SPDT,208/230V (USE W/75A7

COOLING PARTS

Callout	Name	Quantity	Description
	RELAY-OVERLOADCOMP-INTERNAL Cat #: Model/Part #:	1	

Callout	Name	Quantity	Description
	BLOCK-TERMINAL Cat #: 88C67 Model/Part #: 88C6701	1	MAKEUP BOX(220/240V-INTL ONLY)
	BLOCK-TERMINAL Cat #: 88C68 Model/Part #: 88C6801	1	MAKEUP BOX(380/420V-INTL ONLY)
	CAP-SEAL Cat #: 66817 Model/Part #: P-8-1401	3	FITTING-PRESSURE TAP
	VALVE CORE Cat #: 66820 Model/Part #: P-8-1897	3	VALVE, CORE 8075910047
	CAP-SEAL Cat #: 58114 Model/Part #: P-8-3187	3	CAP, BRASS
	BUSHING-SNAP Cat #: 86795 Model/Part #: P-8-8278	4	"MAKEUP BOX(7/10" I.D.FOR 7/8" OPENING)"
	BLOCK-TERMINAL Cat #: 38713 Model/Part #: P-8-9729	1	MAKEUP BOX(INTL ONLY)
	MOUNT PKG-COMP Cat #: 36A67 Model/Part #: PR-363	1	MOUNT PKG-COMP
18	COMPRESSOR Cat #: 69116 Model/Part #: P-8-10222	1	"2-1/4TON,380/420/50/3,TEC (INTL ONLY)"
18	COMPRESSOR Cat #: 63K71 Model/Part #: P-8-7467	1	"2-1/4TON,208-230/60/1,TEC"
18	COMPRESSOR Cat #: 78H27 Model/Part #: P-8-7602	1	"2TON,208-240/50/1,TEC (INTL ONLY)"
21	COIL-OUTDOOR Cat #: 76506 Model/Part #: LB-43317C	1	L/MANIFOLD
22	COIL-INDOOR	1	W/MANIFOLD

Callout	Name	Quantity	Description
	Cat #: 12934 Model/Part #: LB-44549BA		
23	CAP TUBE ASSY Cat #: 35A19 Model/Part #: LB-21974BA	1	"STRAINER,TUBES,&ADAPTORS"
24	CAPACITOR Cat #: 53H02 Model/Part #: P-8-1379	1	"5MFD,370VAC"
27	CAPACITOR-RUN Cat #: 53H16 Model/Part #: 96C4701	1	"35MFD,370VAC(1PH ONLY)"
28	MOTOR-FAN Cat #: 70C16 Model/Part #: P-8-9492	1	"1/6HP,1075RPM,208-230/60/1"
29	ARM-MOTOR MTG Cat #: 40A77 Model/Part #: P-8-10379	3	O.D. FAN MOTOR
30	BAND-MOTOR Cat #: LB-75126D Model/Part #: LB-75126D	1	O.D. FAN MOTOR
31	FAN Cat #: 87295 Model/Part #: P-8-10387	1	"1/2""BORE,20""DIA,4 BLADES"

Note:

There are no technical notes for this product.