

GREAT VALUE IN HEATING EFFICIENCY



 **Lochinvar**<sup>®</sup>  
HIGH EFFICIENCY BOILERS & WATER HEATERS

**CADET**<sup>®</sup>  
HEATING BOILER

# CADET<sup>®</sup>

HEATING BOILER

## Lochinvar brings you the best all-around value in today's home heating market.

This modulating/condensing residential heating boiler offers fuel cost savings and outstanding quality at lower cost than other high-efficiency designs. With gas inputs from 40,000 to 120,000 Btu/hr, these wall-mount boilers can handle the heating load for almost any home.

**94% AFUE EFFICIENCY**

**COMPACT  
WALL-MOUNT DESIGN**

**MODULATING BURNER**

**OUTDOOR RESET  
WITH SENSOR**

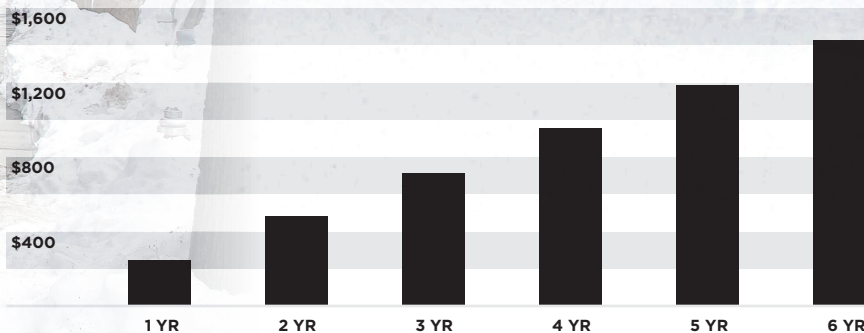
**COMBINATION HYDRONIC SPACE  
HEATING/DOMESTIC WATER  
HEATING MODEL AVAILABLE**



## 94% AFUE Efficiency Reduces Heating Bills.

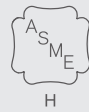
For example, over 6 years, CADET could save over \$1,400 in fuel costs.\*

Depending on where it is installed, CADET may qualify for Energy Tax Credits.



\*Fuel savings are compared to an 80% AFUE boiler and based on a 70,000 Btu heating load with 2,000 hours of operation with a fuel cost of \$1.13 per therm.

## Stainless Steel Heat Exchanger with ASME 'H' Stamp.



1. A commercial-grade ASME certified heat exchanger exemplifies the highest standards for design, materials and manufacturing.

## Fully Modulating Burner.

2. Modulation adjusts the firing rate of the boiler to match the heat loss of the home, reducing burner cycling and increasing overall system efficiency.

## Outdoor Reset with Sensor.

3. Monitors outdoor temperature to help CADET maintain a steady, consistent indoor comfort level year-round. Allows boiler control to “reset” indoor water temperature as needed when outdoor temperatures fluctuate.

## Push-Button Digital Control.

4. Constant display of actual output temperature, and easy adjustment of setpoint.

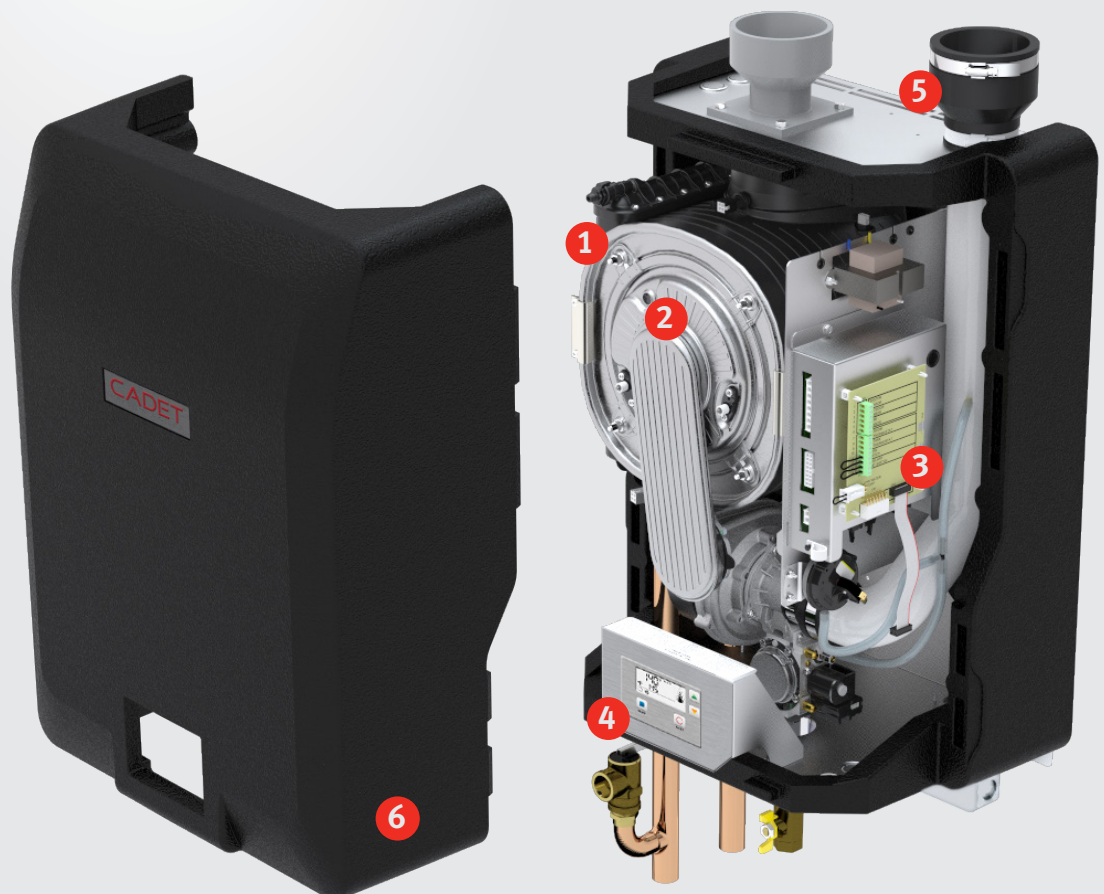


## Venting Versatility.

5. CADET can be installed with a variety of venting configurations, including vertical or sidewall direct venting. Air intake and exhaust vent runs up to 100 feet can be utilized to meet the most challenging installation requirements. 3" polypropylene, PVC, CPVC or stainless steel pipe can be used. This venting flexibility is ideal for projects that will require new vent material when a non-condensing boiler is being replaced.

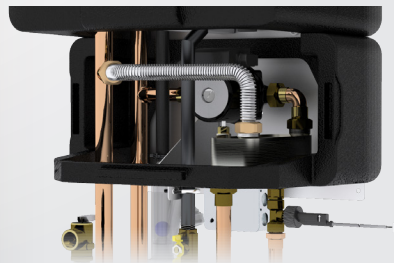
## Expanded Polypropylene (EPP) Jacket.

6. Lightweight for easier handling. Deadens sound for quieter operation. Highly dent and scratch-resistant.



# Combination Unit for Space Heating and Domestic Water Heating.

The CADET™ CCN120 eliminates the need for separate hydronic heating and domestic water heating equipment. It is equipped with a separate heat exchanger that delivers up to 3.0 GPM of domestic hot water at a 70°F temperature rise. An integrated flow switch, water temperature sensor and timer ensures that both the space heating and water heating demands are always met, without the need for a separate storage tank.



## Standard Features

- 94% AFUE Efficiency
- Modulating Burner
- Direct-Spark Ignition
- Low-NOx Operation
- Field Convertible from Natural to LP Gas
- ASME Boiler Heat Exchanger
- 30 psi ASME Relief Valve
- Freeze Protection
- Vertical & Horizontal Direct-Vent

- PVC, CPVC, Polypropylene or SS Venting up to 100 feet
- Push-Button Digital Control
- Outdoor Temperature Reset (sensor included)
- Boiler Pump Control
- DHW Pump Control
- Expanded Polypropylene Jacket
- 10-Year Boiler Heat Exchanger Limited Warranty
- 2-Year Parts Warranty

## Additional Information on CCN120 Combination Boiler

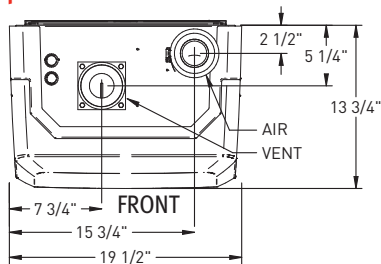
- 3.0 GPM Flow Rate at 70°F Temp. Rise
- 3/4" Hot and Cold Water Connections
- Domestic Hot Water Pump and Domestic Hot Water Pump Control

## Specifications

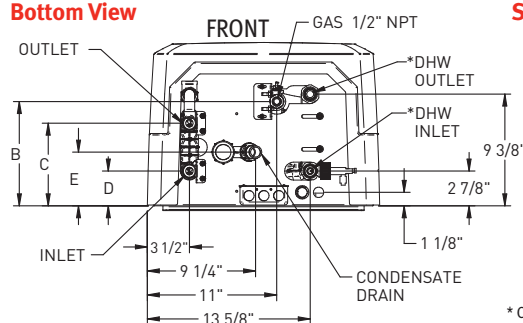
Model	INPUT (MBH)		%AFUE	Heating Capacity (MBH)	Net AHRI Rating (MBH)	Height		GAS to unit back	OUTLET to unit back	INLET to unit back	CONDENSATE to unit back	Vent	Air Intake	Water	Weight
	Max.	Min.				A	B								
CDN040	40	9	94.0	37	32	26"	4 1/4"	5 1/4"	4"	2 1/2"	2"	2"	3/4"	94	
CDN070	70	14	94.0	65	57	26"	4 1/2"	5 3/4"	3"	1 1/2"	2"	2"	1"	98	
CDN100	100	20	94.0	93	81	26"	6"	5 3/4"	3"	1 1/2"	2"	2"	1"	102	
CDN120	120	24	94.0	112	97	26"	7 1/4"	7"	3"	1 1/2"	3"	3"	1"	108	
CCN120	120	24	94.0	112	97	35"	8 3/4"	7"	3"	4 1/2"	3"	3"	1"	131	

\* CCN120 is Combination Hydronic Space Heating/Domestic Water Heating Boiler. Combination Unit Domestic Water Connections are 3/4"

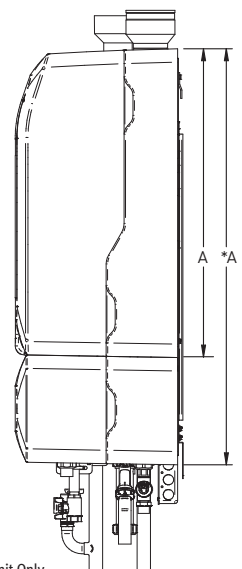
### Top View



### Bottom View



### Side View



\* CCN120 Combination Unit Only



Lochinvar, LLC  
300 Maddox Simpson Parkway  
Lebanon, Tennessee 37090  
P: 615.889.8900 / F: 615.547.1000  
f t in y Lochinvar.com

