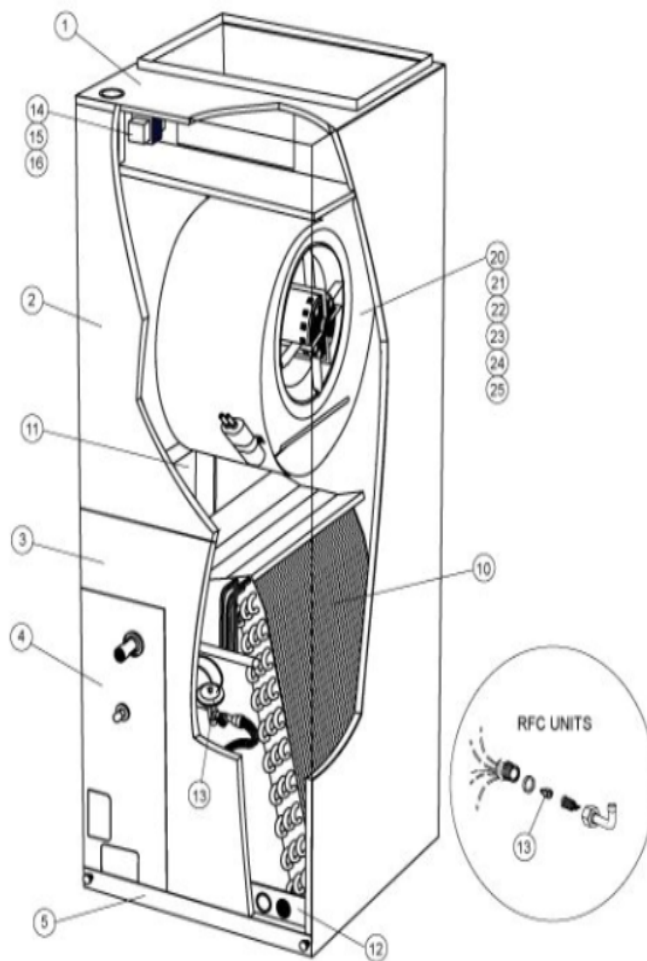


CB26 / CBX26 SERIES



Revision Number - 1

BLOWER PARTS

| Callout | Name | Quantity | Description |
|---------|---|----------|--|
| | RAIL,BLOWER RAH II Cat #: 42W48 Model/Part #: 65912400 | 2 | RAIL, BLOWER |
| 20 | HOUSING-BLOWER L/RAILS Cat #: 12W99 Model/Part #: 65915700 | 1 | BLOWER HOUSING W/WHEEL 10 X 6 |
| 21 | WHEEL-BLOWER Cat #: 40F83 Model/Part #: LB-29333BBJ | 1 | 1/2" BORE,10" X 6" |
| 22 | MOTOR-BLOWER Cat #: 12W65 Model/Part #: 65915000 | 1 | 1/4HP 240/60/1 (2 SPD) (BEFORE 6/1/2007) |
| 22 | MOTOR-BLOWER Cat #: 41W50 Model/Part #: 65915101 | 1 | 1/4HP 240/60/1 (3 SPD) (AFTER 6/1/2007) |
| 23 | MOUNT-BAND Cat #: 13W16 Model/Part #: 65936700 | 1 | BAND-MOTOR MTG |
| 24 | MOUNT-ARM Cat #: 13W14 Model/Part #: 65066100A-01 | 4 | ARM-MOTOR MOUNT |
| 25 | CAPACITOR Cat #: 53H06 Model/Part #: 53H0601PR | 1 | 15MFD,370VAC |

CABINET PARTS

| Callout | Name | Quantity | Description |
|---------|---|----------|------------------------------|
| | FILTER-AIR 16" X 20" X 1" Cat #: Model/Part #: | 1 | |
| | KIT-HARDWARE Cat #: 97M37 Model/Part #: LB-110418A | 1 | PKG OF 10 FOR FILTER DOOR |
| 1 | CAP-CABINET Cat #: 13W47 Model/Part #: 659010-07 | 1 | CAP-CABINET |
| 2 | PANEL-ACCESS Cat #: 12W83 Model/Part #: 659075-07 | 1 | BLOWER |

| Callout | Name | Quantity | Description |
|---------|--|----------|-------------|
| 3 | PANEL-ACCESS Cat #: 12W85 Model/Part #: 659077-07 | 1 | COIL |
| 4 | PANEL Cat #: 12W89 Model/Part #: 659079-07 | 1 | PATCH PLATE |
| 5 | PANEL-ACCESS Cat #: 12W92 Model/Part #: 659263-04 | 1 | FILTER |

CONTROL PANEL PARTS

| Callout | Name | Quantity | Description |
|---------|--|----------|---|
| | 104798-01 Harness-Wire (Complete Unit) Cat #: 74W17 Model/Part #: 74W17 | 1 | 65689900 Harness-Wire (Complete Unit) |
| 14 | TRANSFORMER Cat #: 38M45 Model/Part #: 38M4501 | 1 | 208/240V PRI,24V SEC,40VA |
| 15 | RELAY-BLOWER Cat #: 13W13 Model/Part #: 99018600 | 1 | RELAY |
| 16 | RELAY-TIME DELAY Cat #: 19W66 Model/Part #: 76700452 | 1 | 1 SEC ON, 45 SEC OFF (AFTER 1/1/2006) |
| 16 | RELAY-TIME DELAY Cat #: 13W12 Model/Part #: 99018100 | 1 | 30 SEC ON, 30 SEC OFF (BEFORE 1/1/2006) |

COOLING PARTS

| Callout | Name | Quantity | Description |
|---------|---|----------|------------------|
| | DISTRIBUTOR ASSY (FOOTNOTE 1) Cat #: Model/Part #: | 1 | |
| | LIQUID LINE Cat #: 44L35 Model/Part #: 44L3501 | 1 | LINE-LIQUID ASSY |
| | WASHER KIT Cat #: 49J23 Model/Part #: 49J2301PR | 1 | PACKAGE OF 12 |
| | LIQUID LINE KIT | 1 | Liquid Line |

| Callout | Name | Quantity | Description |
|----------------|--|-----------------|--|
| | Cat #: 69J46 Model/Part #: LB-95325A | | |
| 10 | COIL-INDOOR Cat #: 12W72 Model/Part #: 659771-79 | 1 | W/MANIFOLD (LESS DRAIN PAN) |
| 11 | PAN-DRAIN Cat #: 12W80 Model/Part #: 65696903 | 1 | (HORIZONTAL) |
| 12 | PAN-DRAIN Cat #: 12W77 Model/Part #: 65634804 | 1 | (VERTICAL) |
| 13 | VALVE-EXPANSION Cat #: 49L24 Model/Part #: 49L2401 | 1 | VALVE- EXPANSION/CHECK (R410A) |
| 13 | VALVE-EXPANSION (R-22) Cat #: 56J19 Model/Part #: LB-85759F | 1 | CHECK/EXP. VALVE KIT/1.5-3 TON (R- 22) |

Note:

Note1: DISTRIBUTOR ASSEMBLIES ARE NOT SET UP AS A REPAIR PART. IF COIL HAS MULTIPLE LEAKS IN THE DISTRIBUTOR ASSEMBLY, THE COIL SHOULD BE REPLACED.