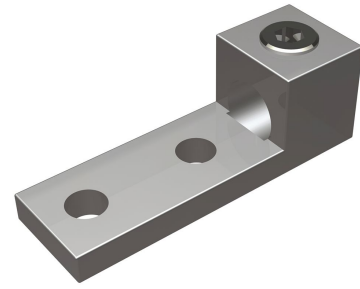


KA36U2N, AL Universal, 2-Hole, Dual Rated

By Burndy
Catalog # KA36U2N

Aluminum Universal Terminal, 2 Hole, 2 AWG (Str)-600 kcmil,
1/2" Stud, 1.75" Stud Hole Spacing, 1 Screw, Al/Cu Rated, Tin
Plated



Features

- Dual Rated Panelboard Lugs
- High strength extruded aluminum alloy
- Electro tin-plated for low contact resistance
- Rated to 35kV

Application

For Aluminum and Copper Conductors

Specifications

Buy American Compliant	Yes
EU RoHS Indicator	Yes
Buy America(n) Qualified	<ul style="list-style-type: none"> • Buy America Compliant (All status valid till December 2026) • Buy American Act Compliant (All status valid till December 2026) • BABA Compliant (All status valid till December 2026)
Industry Standard(s)	UL 486A-486B
Standards - Industry Standards Met	UL 486A-486B
Standards - RoHS Compliance Status	EX
Certification - UL Listed Direct Burial	No
UL Listed	Yes
Certification - CSA Approved	Yes

Conductor

Conductor - AL Str Size	<ul style="list-style-type: none"> • 2 AWG • 1 AWG • 1/0 AWG • 2/0 AWG • 3/0 AWG • 4/0 AWG • 250 kcmil • 266 kcmil • 300 kcmil • 336 kcmil • 350 kcmil • 397 kcmil • 400 kcmil • 450 kcmil
-------------------------	--

- 477 kcmil
- 500 kcmil
- 550 kcmil
- 556 kcmil
- 600 kcmil

Conductor - AL Str Size Range 2 AWG-600 kcmil
Conductor - Copper Str Size

- 2 AWG
- 1 AWG
- 1/0
- 2/0 AWG
- 3/0 AWG
- 4/0 AWG
- 250 kcmil
- 300 kcmil
- 350 kcmil
- 400 kcmil
- 450 kcmil
- 500 kcmil
- 550 kcmil
- 600 kcmil

Conductor Size 2 AWG-600 KCMIL

Conductor - Copper Solid Size

- 1 AWG
- 1/0 AWG
- 2/0 AWG
- 3/0 AWG
- 4/0 AWG

Number Of Conductors 1

Conductor - Copper Solid Size Range 1 AWG-4/0 AWG

Conductor Type

- AL C Str-Size
- CU C Str-Size
- CU C Solid-Size

Conductor - Copper Str Size Range 2 AWG-600 kcmil

Configuration

Physical Attribute - Number of Screws 1

Physical Attribute - Number of Holes 2

Connector Type Terminal

Dimensions

Dimension - Pad Width inch	1.52 in
Package Height	2.100 in
Dimension - Height mm	39.9 mm

Dimension - Height inch	1.57 in
Dimension - Height fraction	1.5714285714285714 in
Package Weight	1.430 lb.
Package Length	6.000 in
Package Width	6.450 in
Dimension - L Length Overall mm	119 mm
Dimension - Width fraction	1-1/2 in
Dimension - Hole Size mm	14 mm
Dimension - Hole Size inch	0.56 in
Dimension - Stud Size inch	1/2
Dimension - Bolt Hole Size inch	0.50 in
Dimension - Bolt Size fraction	1/2
Dimension - Width mm	38 mm
Dimension - Width inch	1.50 in
Dimension - D inch	3.22 in
Dimension - N inch	0.63 in
Dimension - Length Overall inch	4.69 in

Force Related

Installation Torque	500 LBS/in
Recommended in-lb	



A Hubbell brand

General

Material - Hardware	Aluminum
Physical Attribute - Screw Type	Allen
Plated	Y
Sub Brand	UNIVERSAL TERM
UPC	781810370407
Type	Bolted Lugs & Terminals
Material	Aluminum
Plating Type	Tin
UPC 14 Digit GTIN	00781810370407

Logistics

Minimum Pack Quantity	1
Pallet Quantity	1584
Carton Quantity	66

Operational

Temperature Rating	194
--------------------	-----

Product Assets

[Catalog \[English\]](#)