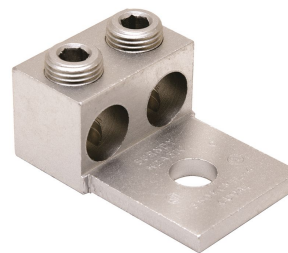


K2A40U, AL Universal Terminal, 2-Conductor, 1-Hole

By Burndy
Catalog # [K2A40U](#)

2 Conductor, 300-800 kcmil Class B&C, 300-750 kcmil Class G,H,I,K, DLO, 1-Hole, 1/2" Stud, Tin Plated, Dual Rated



Features

- Dual rated panelboard lugs
- Constructed from high strength, extruded aluminum alloy
- Electro tin-plated to provide low contact resistance

Application

For Aluminum And Copper Conductors

Specifications

Certification - UL Recognized	No
Buy American Compliant	Yes
Certification - cULus	No
EU RoHS Indicator	Yes
Buy America(n) Qualified	<ul style="list-style-type: none"> • Buy America Compliant (All status valid till December 2026) • Buy American Act Compliant (All status valid till December 2026) • BABA Compliant (All status valid till December 2026)
Industry Standard(s)	UL 486A-486B
Certification - ETL	No
Standards - Industry Standards Met	UL 486A-486B
Standards - RoHS Compliance Status	EX
Certification - UL Listed Direct Burial	No
UL Listed	Yes
Certification - CSA Approved	Yes

Conductor

Conductor - AL Str Size	<ul style="list-style-type: none"> • 300 kcmil • 336 kcmil • 350 kcmil • 397 kcmil • 400 kcmil • 450 kcmil • 477 kcmil • 500 kcmil • 550 kcmil • 556 kcmil • 600 kcmil • 636 kcmil
-------------------------	--

- 650 kcmil
- 700 kcmil
- 715 kcmil
- 750 kcmil
- 795 kcmil
- 800 kcmil

Conductor - AL Str Size Range	300-800 kcmil
Conductor - Copper Str Size	<ul style="list-style-type: none"> • 300 kcmil • 350 kcmil • 400 kcmil • 450 kcmil • 500 kcmil • 550 kcmil • 600 kcmil • 700 kcmil • 750 kcmil • 800 kcmil
Conductor Size	300-800 KCMIL
Number Of Conductors	2
Conductor Type	<ul style="list-style-type: none"> • AL C Str-Size • CU C Str-Size
Conductor - Copper Str Size Range	300-800 kcmil

Configuration

Physical Attribute - Number of Holes	1
Connector Type	Parallel Set-Screw

Dimensions

Dimension - Pad Width inch	3.20 in
Package Height	2.300 in
Dimension - Height mm	49.5 mm
Dimension - Height inch	1.95 in
Dimension - Height fraction	2 in
Package Weight	2.930 lb.
Package Length	10.100 in
Package Width	5.600 in
Dimension - L Length Overall mm	86 mm
Dimension - Width fraction	3-19/100 in
Dimension - Hole Size mm	17 mm
Dimension - Hole Size inch	0.66 in
Dimension - Screw Size inch	3/8
Dimension - Stud Size inch	5/8 in
Dimension - Bolt Hole Size inch	0.63 in

Dimension - Bolt Size fraction 5/8
Dimension - Width mm 81 mm
Dimension - Width inch 3.20 in
Dimension - D inch 1.66 in
Dimension - N inch 0.88 in
Dimension - Length Overall
inch 3.38 in

Force Related

Installation Torque 550 in-lbs
Recommended in-lb

General

Material - Hardware Aluminum
Physical Attribute - Screw Type Slot
Plated N
Sub Brand UNIVERSAL TERM
UPC 781810600252

Type Bolted Lugs & Terminals
Material Aluminum
Plating Type Tin plated
UPC 12 Digit 781810600252
Hardware Type 3/8 UNC Slotted Set Screw
UPC 14 Digit GTIN 00781810600252

Logistics

Minimum Pack Quantity 1
Pallet Quantity 30
Carton Quantity 30

Operational

Temperature Rating 194

Product Assets

[Catalog \[English\]](#)



A Hubbell brand