



BOSCH

Invented for life

Bosch Light Commercial Boiler

SSB Stainless Steel Boiler

Featuring an efficiency of 96%, a compact design, the best price performance in the market and a peace of mind warranty, the SSB is ideal for new and replacements installations with the quality you have come to expect from Bosch. Available in three sizes: 255, 399, and 511 MBH.



A Compact Condensing Boiler, That Provides Reliable & Efficient Heating Year After Year.

Meet the Bosch Buderus SSB Boiler

Our Buderus SSB series is a versatile solution packaged with extensive yet non-complex features for small and large commercial projects. The Buderus SSB has an impressive compact design, installation, service-oriented concept and flexible system integration. It can achieve a unique consistent combustion throughout the entire length of the burner tube thanks to a patented, laser perforated design.

With an efficiency of 96%, the Buderus SSB is loaded with standard features that include 5:1 turn down ratio; on-board control that includes weather compensation; mod-bus connectivity; a 2 wire cascades link; practical control solutions for any application; push terminal wiring; and a host of venting options. The Buderus SSB boilers are CSD1 compliant thanks to the built in low water cut off and adjustable manual reset high limit.

Features

- ▶ **Peace of Mind Warranty:** 10 years full limited warranty on the heat exchanger⁽¹⁾
- ▶ **Reliability:** Heat exchanger and entire burner assembly is made of 316L stainless steel.
- ▶ **Comfort:** Provides comfortable heating with or without indirect domestic hot water tank from a small studio unit up to commercial cascade applications.
- ▶ **Ease of Installation:** Automatic control unit for gas-fired appliances with a premix burner and a pneumatic air-gas system. Factory built-in LWCO and Safety Temperature High Limiter w/ manual reset.
- ▶ **Control:** The SSB has multiple parameters, for heating, domestic water heating, and circulator pump, each designed for the most common applications.

(1) Please go to boschheatingandcooling.com for full limited warranty details



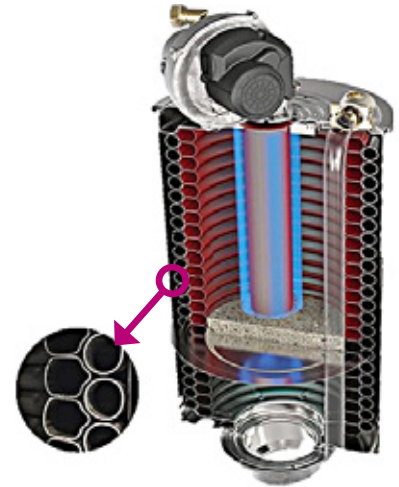
Buderus SSB Boiler Information

Highly Efficient & Durable Commercial Boiler Design

- ▶ SSB255 – 512 are equipped with Manual Reset High Limit and LWCO with test button
- ▶ SSB512 is also equipped with a 75lb pressure relief valve and Lo and Hi gas pressure switches with manual resets
- ▶ The SSB boiler can be connected to a room thermostat
- ▶ Includes an outdoor air temperature sensor to control the supply temperature for increased fuel efficiency and comfort
- ▶ Special insulation offering ultra quiet operation

316L Stainless Steel Heat Exchanger

SSB comes with a built in 316L Stainless Steel compact Heat Exchanger. The Heat Exchanger has a Water tube design with parallel concentric circuits. Each watertube has at least 7/8" ID which ensures minimal water pressure drop across the Heat Exchanger.



Top connections
for easy installation



Integrated control with
weather compensation



Long Lasting & Durable Operation With High Quality Commercial-Grade Components!

Supply/Return Top Connections “Stepped”

Air & Exhaust vent adaptors

Digital Control w/ High-Limit Test Button

Pre-Mix Fan

Double wall, Stainless Burner

Slide-out Wiring Panel

Line/Low voltage terminal block
Modbus communication protocol on board
BACNet and LonWorks option available
Analog 0-10 Vdc demand signal

LWCO Test/Reset button

316L Stainless Steel Heat Exchanger

12 years of proven reliability

Adjustable leveling legs



System & Technical Information

Technical Specifications	Unit of Measure	SSB255	SSB399	SSB512
Part Number	-	7738004894	7738004895	7738004896
Type of Gas	-	Natural Gas, Propane		
Application	-	Commercial		
Max Input Rate	BTU/hr (kW)	255,000 (75)	399,000 (117)	511,000 (150)
Min Input Rate	BTU/hr (kW)	51,180 (15)	79,800 (23.4)	102,400 (30)
Turn-down	Rate (%)	5:1 (20 %)		
Gas Connections (NPT)	Ø Inch	1"		
Max./ Min NG Pressure	Inch W.C. (mbar)	10.5 (26.15) / 3.5 (8.72)		
Max. / Min LPG Pressure	Inch W.C. (mbar)	13 (32.3) / 8 (19.9)		
Water Connections	Ø Inch	1 ½ "		
Max. Allowable Working Pressure (MAWP)	PSI (bar)	80 (5.5)		
Recommended Water Flow @ Max Power (ΔT 36 °F / 20 °C)	GPM (m3/h)	14.2 (3.2)	22.2 (5.0)	28.4 (6.5)
Max Water Flow @ Max Power (ΔT 27 °F / 15 °C)	GPM (m3/h)	18.9 (4.3)	29.5 (6.7)	37.9 (8.6)
Min Water Flow @ Max Power (ΔT 54 °F / 30 °C)	GPM (m3/h)	9.5 (2.2)	14.8 (3.4)	18.9 (4.3)
Min Water Flow @ Max Power (ΔT 27 °F / 15 °C)	GPM (m3/h)	3.8 (0.9)	5.9 (1.3)	7.6 (1.7)
Water Pressure Drop @ Recommended Water Flow	Feet W.C. (Mbar)	5.3 (160)	11.0 (330)	21.7 (650)
Water Pressure Drop @ Max Water Flow	Feet W.C. (Mbar)	6.4 (190)	13.8 (410)	37.73 (1120)
Water Volume	Gallon (liter)	4.0 (15.2)	4.5 (17.0)	6.0 (23.0)
Vent/Air Intake Connections	Ø Inch (Ø mm)	3 (80)	4 (100)	4 (100)
Max Operating Temperature	°F (°C)	194 (90)		
Max HE Allowable Temperature	°F (°C)	210 (98.9)		
Ambient Storage Temperature Dry	°F (°C)	5 to 158 (-15 to 70)		
Ambient Functioning Temperature	°F (°C)	32 to 120 (0 to 49)		
Surface Heat Exchanger	SQ.FT. (m2)	22.0 (2.0)	27.2 (2.5)	43.0 (4.0)
Standard Listings & Approvals	-	CSA, ASME, AHRI		
Electrical Req. 120VAC/1PH/60Hz	-	4 FLA*		
Noise Rating	dB	46	47	48
Weight (dry)	lbs (kg)	198 (90)	220 (100)	242 (110)
Min. Clearance to Combustibles*	Inch (mm)	2" (50.8)		
Dimension W x H x D - (inches rounded up to the nearest 1/8")	Inch (mm)	24 x 61½ x 21¾ (609x1564x550)		

* See manual for details

About **Bosch**

Bosch Group

The Bosch Group is a leading global supplier of technology and services in the areas of Automotive, Industrial Technology, Consumer Goods and Building Technology. The company was founded in Stuttgart, Germany, in 1886 and presently has more than 440 subsidiaries and is represented in over 150 countries.

In the U.S., Canada and Mexico, the Bosch Group manufactures and markets automotive original equipment and aftermarket solutions, industrial drives and control technology, power tools, security and communication systems, packaging technology, thermotechnology, household appliances and software solutions. The Bosch Group's products and services are designed to improving quality of life by providing innovative and beneficial solutions. In this way, the company offers technology worldwide that is "Invented for life." Additional information is available online at boschheatingandcooling.com and bosch.ca.

Bosch Thermotechnology in North America

Bosch Thermotechnology is a leading source of high quality water heating and comfort systems. The company offers gas tankless, electric whole house and point-of-use water heaters, Bosch and Buderus floor-standing and wall mounted boilers, Bosch and FHP geothermal, water-source and air-source systems as well as controls and accessories for all product lines. Bosch Thermotechnology is committed to being Simply Smart by offering products that work together as integrated systems that enhance quality of life in an ultra-efficient and environmentally friendly manner. For more information, visit boschheatingandcooling.com.

Bosch Water-Source Heat Pumps: Made in the U.S.A.

Bosch and FHP water-source and geothermal heat pumps are made by highly trained and skilled workers in our factory based in Fort Lauderdale, Florida. They are manufactured with rigorous standards and factory testing ensuring high efficient operation over the life of the unit. Bosch's ISO 9001 and ISO 14001 certified facilities provide consistent quality in every unit built.



Heating



Cooling



Hot Water



Controls

Bosch Thermotechnology Corp.

Watertown, MA • Londonderry, NH • Ft. Lauderdale, FL
General Inquiries: 1-866-642-3198

Copyright © 2018 Bosch Thermotechnology Corp.
All rights reserved. Subject to change without notice.