

# QTDC™

High power.  
High efficiency.  
Quiet operation.

Get the ventilation power you need  
with the energy efficiency you expect.

- Selectable CFM DC motor enables right-sizing ventilation for any size room.
- 30% tighter housing than competitive models.
- Flangeless housing facilitates a seamless installation.
- Quiet fan operation at less than 0.7 sones at all CFM speeds.



# QTDC™ simplifies the way you work.

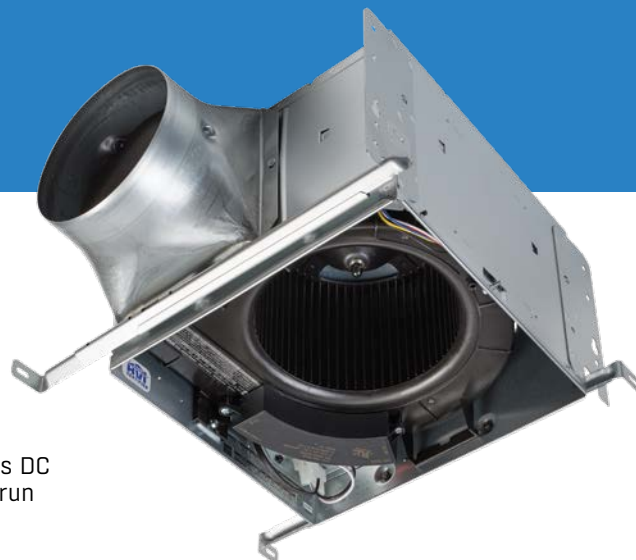
## Energy Efficient Brushless Motor Design

At 1/3 the size of a standard fan motor, our new brushless DC motor:

- Provides more room to move air more quietly.
- Lasts longer than standard motors.
- Weighs less to simplify overhead installation.

## Twice the ENERGY STAR® Efficiency Standard

QTDC™ continues to save money long after installation. The brushless DC motor achieves 90% efficiency so you can feel good about letting it run while keeping the air more comfortable.



## QTDC™ at a glance

- Choose fan or LED fan/light models with or without Sensaire® humidity sensing technology.
- Sensaire® Sense on Rise technology on fan model QTXE110150DCS and fan/light model QTXE110150DCSL.
- TrueSeal™ damper technology creates an airtight seal from inside the housing.
- 6" round duct connector compatible with any Broan duct increaser.
- UL Listed for use over bathtub or shower when connected to a GFCI protected branch circuit.
- Type IC, fits 2" x 8" and larger construction.

## Flangeless housing simplifies installation.

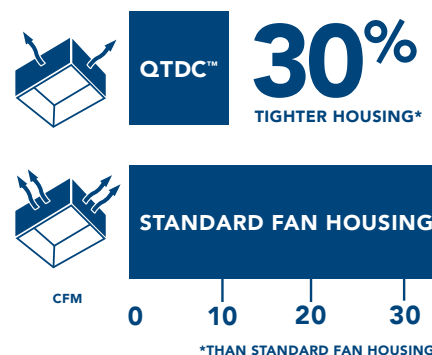


## QTDC™ Specifications

Model	Description	Selectable CFM	Sones at		
			110 CFM	130 CFM	150 CFM
QTXE110150DC	FAN	110-130-150	<0.3	0.4	0.7
QTXE110150DCF	FAN FINISH PACK	110-130-150	<0.3	0.4	0.7
QTXE110150DCL	FAN WITH LED LIGHT	110-130-150	<0.3	0.4	0.7
QTXE110150DCLF	FAN/LED FINISH PACK	110-130-150	<0.3	0.4	0.7
QTXE110150DCS	HUMIDITY SENSING FAN	110-130-150	<0.3	0.4	0.7
QTXE110150DCSL	HUMIDITY SENSING FAN WITH LED LIGHT	110-130-150	<0.3	0.4	0.7
QTXE110150DCSF	HUMIDITY SENSING FAN FINISH PACK	110-130-150	<0.3	0.4	0.7
QTXE110150CDH	HOUSING PACK	110-130-150	<0.3	0.4	0.7
QTXE110150DCLH	LED LIGHTED HOUSING PACK	110-130-150	<0.3	0.4	0.7
QTXE110150DCSH	HUMIDITY SENSING HOUSING PACK	110-130-150	<0.3	0.4	0.7

## Switch between 110, 130 or 150 CFM

You'll have fewer fans to inventory and the right size at installation. Switch the CFM to meet room requirements as well as ASHRAE 62.2 for spot and dwelling unit ventilation.



# BROAN®

Broan.com

Broan, 926 W. State Street, Hartford, WI 53027 800-558-1711

