

For Residential and Commercial Applications

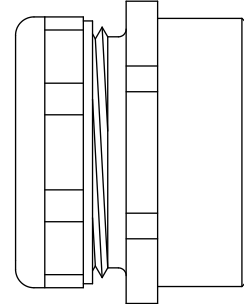
Job Name		Engineer / Architect	
Job Location		Wholesaler	
Submittal Date		Contractor	

191 / 193 / 197 Drain Waste Connector - Compression x FIP

Use: For use in waste drainage systems

Design Features:

- **Extruded one-piece body** eliminates potential for pin holes and porosity
- **Clean, uniform threads** ensure positive threaded connections and reduce potential for cross-threading
- **Full flow waterway** with smooth, uniform internal surfaces
- **Uniform wall thickness** with close dimensional tolerance assurance means no variations
- **Smooth finish** simplifies assembly with no burrs or rough surfaces to catch or hang up during installation



Operating Specifications:

Temperature: 40° to 140°F



Standard

FITTING MATERIAL SPECIFICATIONS	
Body	Brass
Compression Ring	Brass
Nut	Zinc, die cast plated; brass; or brass, chrome plated

Standard Part Listing:

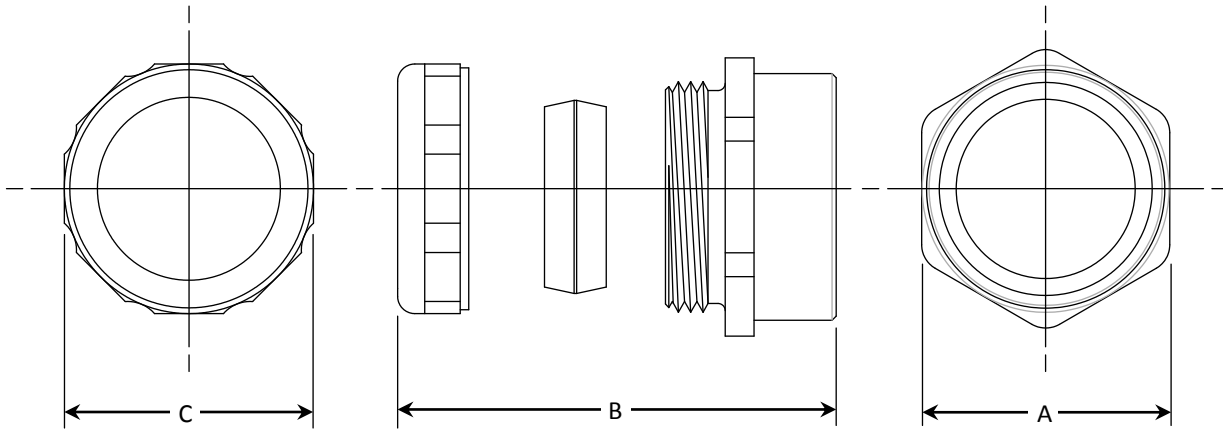
- | | | |
|--------------------------|------|---|
| <input type="checkbox"/> | 191B | 1-1/4" OD compression x 1-1/4" FIP, chrome finish |
| <input type="checkbox"/> | 191C | 1-1/4" OD compression x 1-1/4" FIP, rough finish |
| <input type="checkbox"/> | 193A | 1-1/4" OD compression x 1-1/2" FIP, rough finish |
| <input type="checkbox"/> | 193B | 1-1/4" OD compression x 1-1/2" FIP, chrome finish |
| <input type="checkbox"/> | 193C | 1-1/4" OD compression x 1-1/2" FIP, rough finish |
| <input type="checkbox"/> | 197A | 1-1/2" OD compression x 1-1/2" FIP, rough finish |
| <input type="checkbox"/> | 197B | 1-1/2" OD compression x 1-1/2" FIP, chrome finish |
| <input type="checkbox"/> | 197C | 1-1/2" OD compression x 1-1/2" FIP, rough finish |
| <input type="checkbox"/> | 197D | 1-1/2" OD compression x 1-1/2" FIP, chrome finish |

This specification and all information contained herein is the confidential and exclusive property of BrassCraft Manufacturing, and shall not be disclosed to others without the written consent of BrassCraft Mfg. This specification must be returned to BrassCraft Mfg. if requested.



191 / 193 / 197 Drain Waste Connector - Compression x FIP

PART DIMENSIONS (Inches)			
Model	HEX. A	DIM. B	OCT. C
191	1.75	1.50	1.75
193	1.75	1.50	2.00
197	2.00	1.50	2.00



This specification and all information contained herein is the confidential and exclusive property of BrassCraft Manufacturing, and shall not be disclosed to others without the written consent of BrassCraft Mfg. This specification must be returned to BrassCraft Mfg. if requested.

BrassCraft[®]