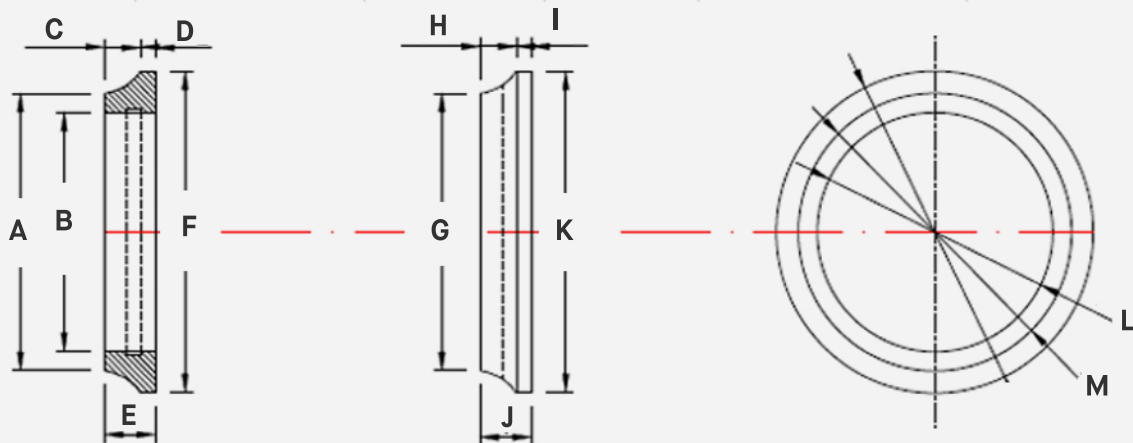


1-1/4" Slip Joint Washer

FEATURES

- **Durable Plastic Construction** – makes the washer ideal for tubular drain applications.



SKU	A	B	C	D	E	F	G	H	I	J	K	L	M
TSJW125	1.29"	1.23"	0.21"	0.05"	0.26"	1.48"	1.23"	0.21"	0.05"	0.26"	1.48"	1.23"	1.48"