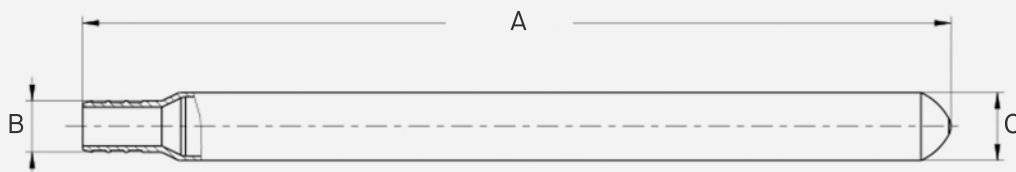


PEX Crimp x Spin Closed Copper Stub Out Bullet



FEATURES

- Tubing Compatibility: PEX
- Fitting System Compatibility: Crimp or Clamp
- Standards Met: ASTM F1807



SKU	Manifold Body	A	B	C
PXS0800	0.622-0.626	8"	1/2 PEX	CLOSE