

Product Instructions



3 Speed Circulator Pump

Applications

We offer 3-speed, wet rotor, direct drive in-line circulator pumps designed for residential and light commercial applications. It is quiet and maintenance free, making it ideal to use in primary and / or secondary loop piping.



Features

- Choice of 3-speed circulator; low, medium and high head
- Ease of wiring; plug-in quick connect terminals
- Use as primary loop and / or secondary loop circulator
- High performance and whisper quiet operation
- Maintenance free
- Removable check valve eliminates need for an in-line flow check

Type PUH15-6SFC

Flow Range: 0 - 17 gpm

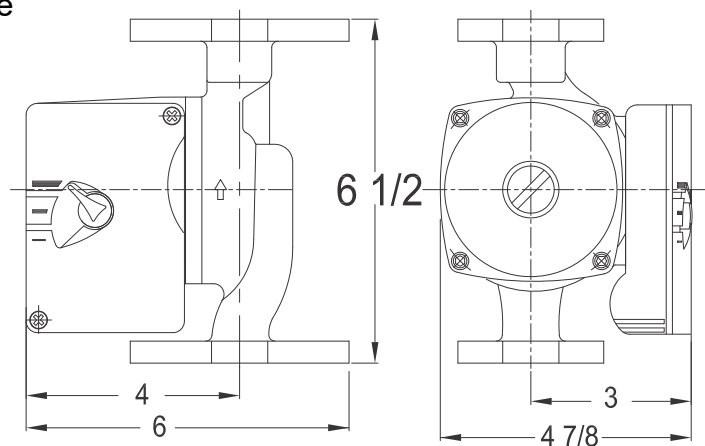
Head Range: 0 - 19.5 feet

Motor: 2 Pole, Single Phase

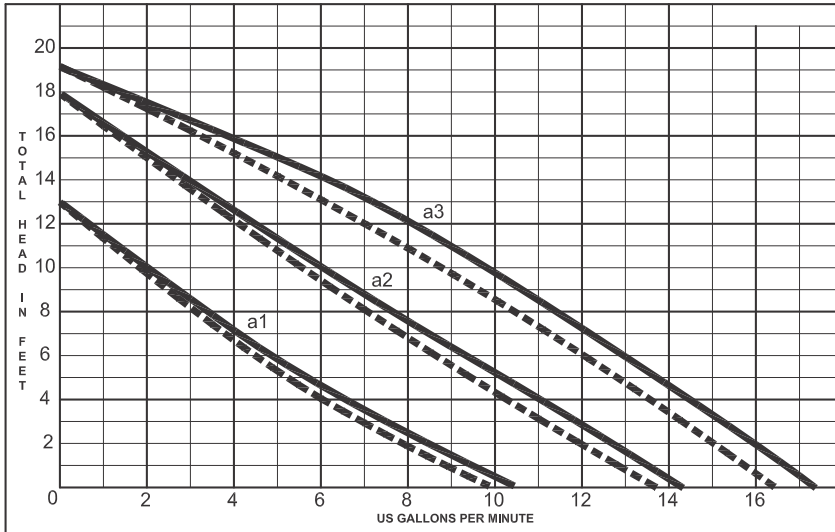
Fluid Temperature Range: 36°F (2°C) - 230°F (110°C)

Max. Working pressure: 145 psi (10 bar)

Maximum glycol mix: 50%



Product Instructions



Installation Tips

- Ensure system is free from debris that could damage circulator pump
- Install circulator pump above lowest point of system to avoid where the sediment would naturally collect
- Fill and purge system prior to starting the circulator pump
- Do not get the inside of terminal box wet

"___" without check valve, "___" with check valve

Type	Speed	Amps	Watts	HP
PUH15-6SFC	HI	0.90	100	1/25
	MED	0.70	70	1/25
	LOW	0.50	55	1/25

Wiring

- Hot lead (typically black wire) to "L" terminal
- Neutral wire (typically white wire) to "N" terminal
- Ground wire (typically green or uninsulated wire) to ground terminal

Diagram

