

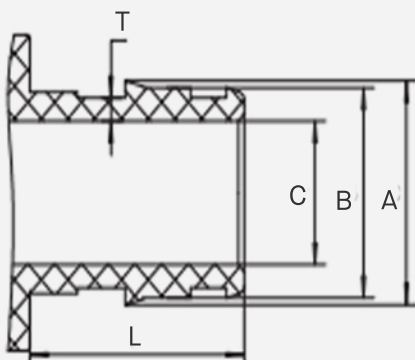
Expansion PEX EP 90-Degree Elbow

FEATURES

- For use with PEX-A tubing.
- Manufactured to ASTM Standard F876-877
- NSF/ANSI Standard 14
- NSF/ANSI Standard 61
- NSF/ANSI Standard 372 (Low Lead)
- ASTM F1960
- CSA B137.5



Insert for Fittings Size (Inch)



| SKU | Size | A | B | C | L | T |
|---------|------|--------|--------|--------|--------|--------|
| PPLE050 | 1/2" | 0.614" | 0.575" | 0.385" | 0.719" | 0.057" |
| PPLE075 | 3/4" | 0.87" | 0.791" | 0.59" | 0.955" | 0.057" |
| PPLE100 | 1" | 1.106" | 1.028" | 0.788" | 1.191" | 0.072" |