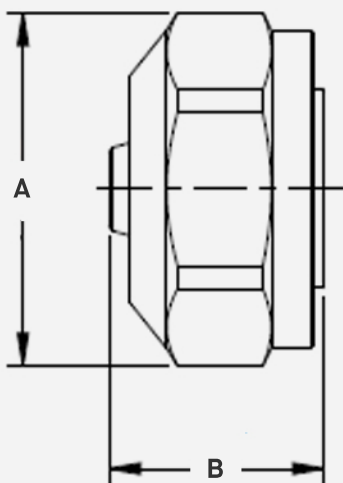


# PEX-AL-PEX to EK20 Loop Fitting Assembly

## FEATURES

- **Lead-Free Brass Construction** – Made from C46500 brass alloy for safe and effective use in commercial and residential jobs.
- **Thread Type:** Female
- **Thread Size:** EK20
- **High Pressure Tolerance** – Capable of withstanding high-pressure environments up to 200PSI.
- **High Temperature Tolerance** – Suitable for use in environments with elevated temperatures up to 200°F, maintaining integrity and performance under thermal stress.
- **ASTM F1960, ASTM F877 & NSF Compliant** – assures quality, safety, and suitability for plumbing applications, including those requiring NSF certification for potable water systems.



SKU	Size	A	B
PALA038	EK20 x 3/8"	1.26"	0.80"
PALA050	EK20 x 1/2"	1.26"	0.84"
PALA058	EK20 x 5/8"	1.26"	0.94"