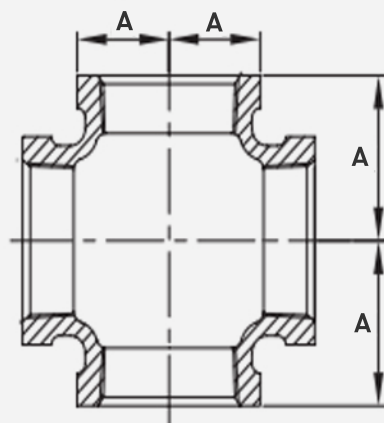


# Galvanized Malleable Cross

## FEATURES

- **Galvanized Steel Construction** – The ASTM A197/A197M compliant malleable steel makes the product strong yet easy to work with.
- **Widely Compatible** – Meets B16.39, ASME B16.3, B16.14, and ASME B1.20.1 regulations for malleable galvanized steel female pipe thread.



SKU	Size	A
GVX050C	1/2"	1.12"
GVX075C	3/4"	1.31"
GVX100C	1"	1.50"