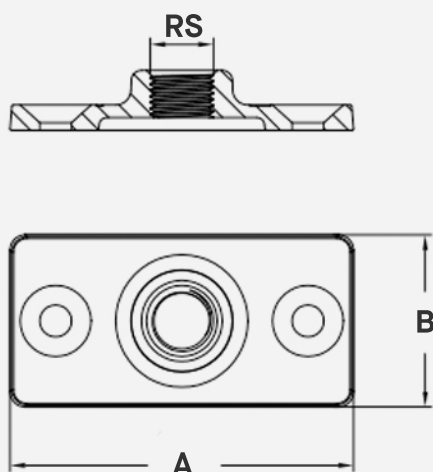


Electro-Galvanized Ceiling Plate

FEATURES

- **Malleable Iron Construction** – makes the plate strong yet easy to work with.
- **Electro-Galvanized Finished** – adds excellent protection against rust and corrosion.
- **Applications** - Designed for attaching hanger rod to wood beams, ceilings, walls and floor.



SKU	Size	A	B	Rod Size (RS)	Max Rec. Load (lbs)
GVPL038	3/8"	1.54"	1.65"	3/8"	500
GVPL050	1/2"	1.54"	1.77"	1/2"	950