

# 2" Pressure Gauge, Bottom Mount

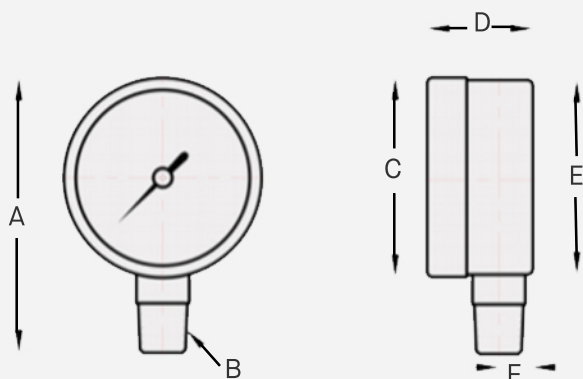
(0-100 PSI)

## APPLICATIONS

- Plumbing, heating, air conditioning, pneumatic, hydraulic, water tanks, and air compressors.

## FEATURES

- **Friction Bezel Ring** – Holds the gauge in place while still allowing the position of the face to be adjusted.
- **Lead Free Brass Connector** - Made from certified lead-free brass for safe and effective use near hydronics and potable water systems.
- **Highly Legible** – The single scale PSI readout and bold indicators makes the gauge easy to check quickly.



SKU	A	B	C	D	E	F
GEP-100-BM	2.83"	1/4" NPT	2.06"	1.10"	2.01"	0.35"

Standard	ASME B40.100
Scale	0-100 PSI
Dial	2" White aluminum with black markings
Case	Black painted steel
Lens	Acrylic
Ring	Black painted steel
Connection	1/4" NPT Lead Free, bottom
Bourdon Tube	Copper Alloy
Pointer	Black Aluminum
Over-Pressure Limit	25% of full scale value
Working Pressure	Maximum 75% of full scale value
Operation Temperature	Ambient -40°F to 140°F, Medium maximum 158°F
Accuracy	±3-2-3%
Enclosure Rating	IP52