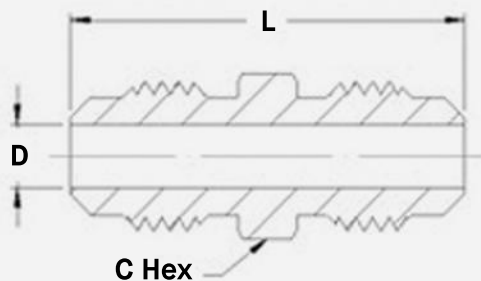
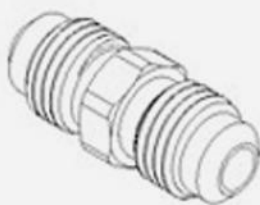


# Brass Flare Union

## FEATURES

- Fully Compliant made with RoHS compliant, low lead JIS C3604 brass for safe and effective use on commercial and residential jobs.



SKU	Tube OD	C Hex	D	L
FLU025	1/4"	.437"	.185"	1.181"
FLU038	3/8"	.626"	.276"	1.476"
FLU050	1/2"	.748"	.406"	1.791"
FLU050-038	1/2" x 3/8"	.748"	.276"	1.598"
FLU058	5/8"	.874"	.512"	2.028"