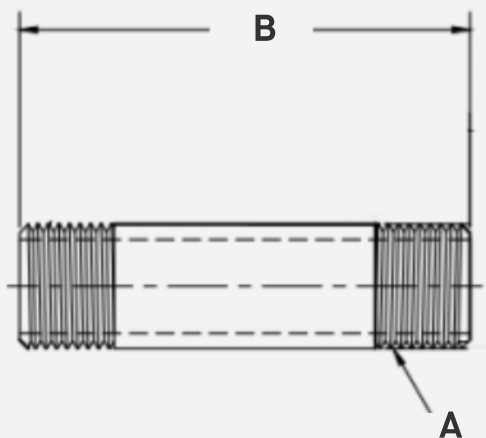


# Chrome Brass Nipple

## FEATURES

- **Brass Construction** – The chrome plated C46400 brass alloy includes tin for added corrosion resistance and excellent strength.
- **Certified Lead-Free** - Meets NSF372 standards for safe use in drinking water systems.
- **Widely Compatible** - Meets NPT and ASME B1.20.1 regulations for standard pipe thread.
- **Durable** - Meets ASTM B124 specifications for hot forging.



SKU	A	B
CRN038	3/8"	Close
CRN050	1/2"	Close
CRN038-150	3/8"	1-1/2"
CRN038-200	3/8"	2"
CRN038-250	3/8"	2-1/2"
CRN038-300	3/8"	3"
CRN038-350	3/8"	3-1/2"
CRN038-400	3/8"	4"
CRN038-500	3/8"	5"
CRN038-600	3/8"	6"
CRN050-150	1/2"	1-1/2"
CRN050-200	1/2"	2"
CRN050-250	1/2"	2-1/2"
CRN050-300	1/2"	3"
CRN050-350	1/2"	3-1/2"
CRN050-400	1/2"	4"
CRN050-450	1/2"	4-1/2"
CRN050-500	1/2"	5"
CRN050-600	1/2"	6"