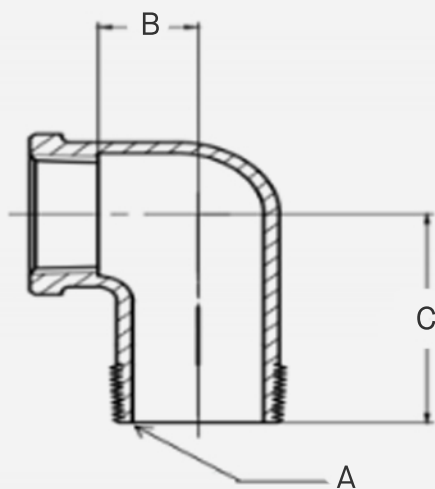


1/2" Chrome Brass 90° Street Elbow

Lead Free

FEATURES

- **Brass Construction** – The chrome plated C89844 brass alloy includes tin and bismuth for added corrosion resistance and excellent strength.
- **Certified Lead-Free** - Meets NSF372 standards for safe use in drinking water systems.
- **Widely Compatible** - Meets NPT and ASME B1.20.1 regulations for standard pipe thread.
- **Durable** - Meets ASTM B584 specifications for copper casting.



| SKU | A | B | C |
|---------|----------|-------|-------|
| CRES050 | 1/2" NPT | 0.45" | 1.30" |