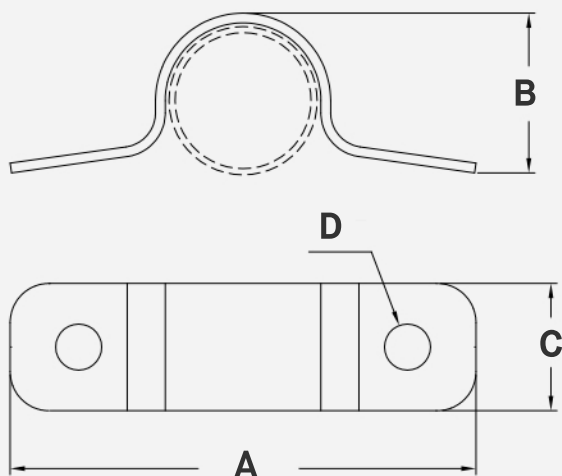


# 2 Hole Carbon Steel Strap

(Copper Plated)

## FEATURES

- **Carbon Steel Construction** – makes the strap exceptionally durable.
- **Copper-Plated** – Keeps the strap resistant to corrosion.



SKU	Size	A	B	C	D
CPPS050	1/2"	1.99"	0.65"	0.51"	0.19"
CPPS075	3/4"	2.24"	0.91"	0.51"	0.19"
CPPS100	1"	2.49"	1.15"	0.51"	0.19"
CPPS125	1-1/4"	2.75"	1.48"	0.51"	0.19"
CPPS200	2"	3.52"	2.20"	0.51"	0.19"