

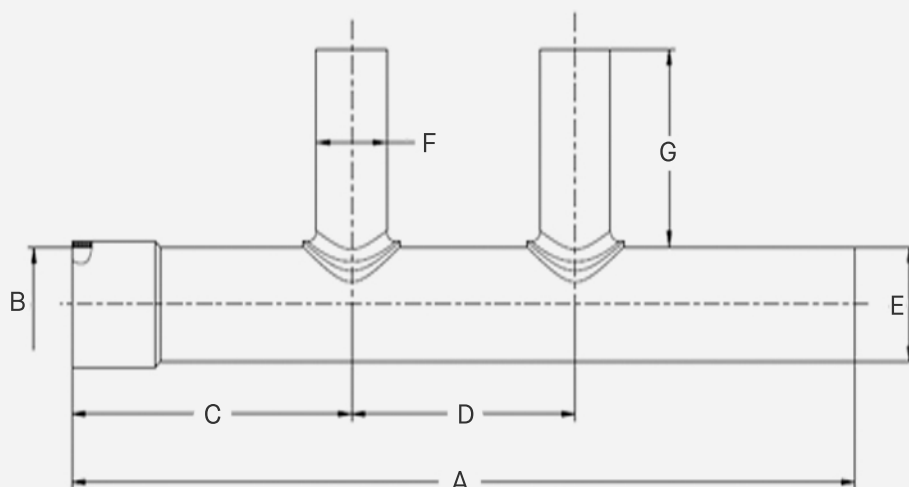
Copper Sweat Manifold

1" Male Sweat x Female Sweat w/ 1/2" Sweat Loops



FEATURES

- **Rated for Durability** - Able to withstand a maximum operating temperature of 180°F at 125 PSI
- **Safe for Drinking Water** - Meets ASTM F877 and F-1807 standards for use in hot- and cold drinking water distribution systems
- **Lead Free** - Listed by NSF Standards 14, 61, and 372



SKU	Branch	A	B	C	D	E	F	G
CM2-100SCA-S0	2	7.5"	1.128"-1.132"	3"	2"/1	1.122"-1.127"	0.622"-0.626"	1.5"
CM3-100SCA-S0	3	9.5"	1.128"-1.132"	3"	2"/2	1.122"-1.127"	0.622"-0.626"	1.5"
CM4-100SCA-S0	4	11.5"	1.128"-1.132"	3"	2"/3	1.122"-1.127"	0.622"-0.626"	1.5"